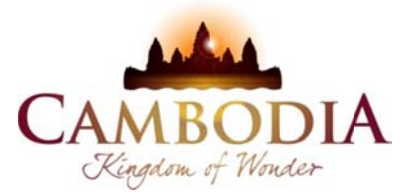




KINGDOM OF CAMBODIA
NATION RELIGION KING



TOURISM STATISTICS REPORT

May 2011

MINISTRY OF TOURISM

Statistics and Tourism Information Department

No. A3, Street 169, Sangkat Veal Vong, Khan 7 Makara, Phnom Penh, Cambodia.

Fax: +855 23 885003

E-mail: kong@mot.gov.kh

Web site: www.mot.gov.kh

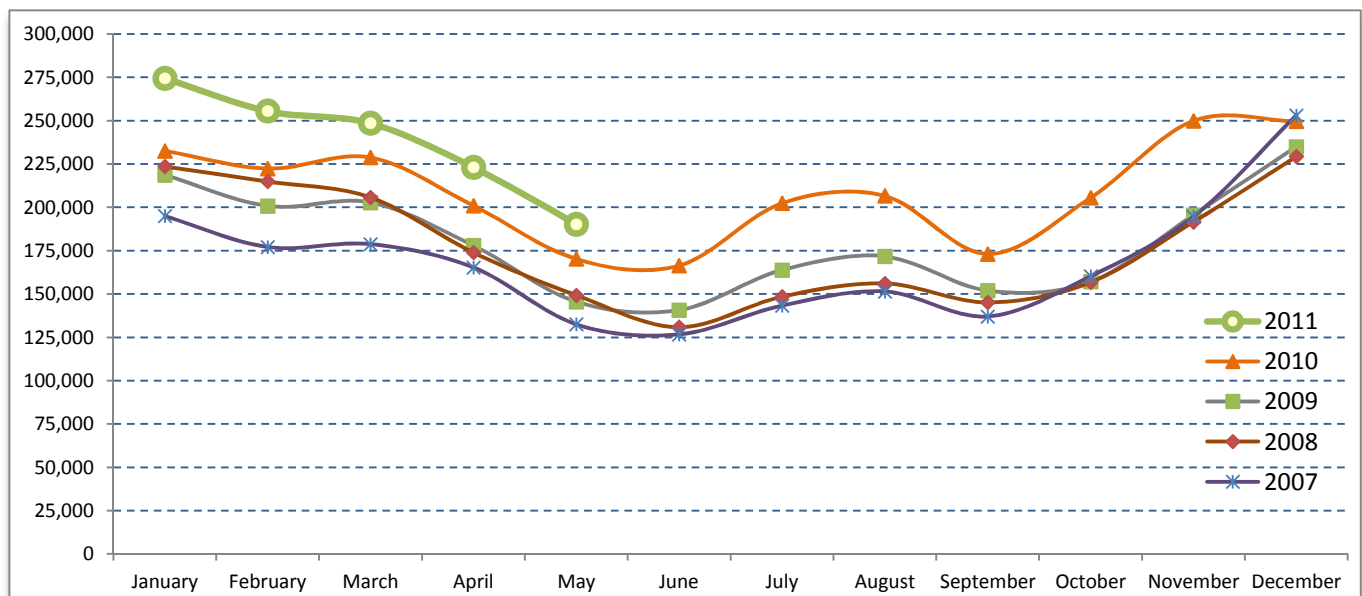
Tourism Highlights

International Tourist Arrivals, Average Length of Stay, Hotels Occupancy & Tourism Receipts 1993 - 2010

Years	Tourist Arrivals		Average Length	Hotels Occupancy	Tourism Receipts
	number	change (%)	of Stay (days)	(%)	(million US\$)
1993	118,183	-	N/A	N/A	N/A
1994	176,617	49.4%	N/A	N/A	N/A
1995	219,680	24.4%	8.00	37.00	100
1996	260,489	18.6%	7.50	40.00	118
1997	218,843	-16.0%	6.40	30.00	103
1998	289,524	32.3%	5.20	40.00	166
1999	367,743	27.0%	5.50	44.00	190
2000	466,365	26.8%	5.50	45.00	228
2001	604,919	29.7%	5.50	48.00	304
2002	786,524	30.0%	5.80	50.00	379
2003	701,014	-10.9%	5.50	50.00	347
2004	1,055,202	50.5%	6.30	52.00	578
2005	1,421,615	34.7%	6.30	52.00	832
2006	1,700,041	19.6%	6.50	54.79	1,049
2007	2,015,128	18.5%	6.50	54.79	1,400
2008	2,125,465	5.5%	6.65	62.68	1,595
2009	2,161,577	1.7%	6.45	63.57	1,561
2010	2,508,289	16.0%	6.45	65.74	1,786

International tourist arrivals to Cambodia

Destination	Months	2007	2008	2009	2010	2011	change (%) 2011*/10
Cambodia	Q1	550,813	644,205	622,288	683,692	778,467	13.9
<i>International tourist arrivals</i>	January	194,932	223,581	218,691	232,590	274,471	18.0
<i>by all means of</i>	February	177,130	214,902	200,789	222,354	255,499	14.9
<i>transportations</i>	March	178,751	205,722	202,808	228,748	248,497	8.6
	Q2	424,536	454,031	464,230	537,464	413,290	
	April	165,347	173,903	177,955	200,965	223,032	11.0
	May	132,512	149,275	145,564	170,164	190,258	11.8
	June	126,677	130,853	140,711	166,335		
	Q3	431,815	449,693	487,422	582,024	0	
	July	143,310	148,449	163,817	202,349		
	August	151,478	156,098	171,668	206,563		
	September	137,027	145,146	151,937	173,112		
	Q4	607,964	577,536	587,637	705,109	0	
	October	160,235	156,718	157,105	205,515		
	November	194,646	191,549	195,570	249,892		
	December	253,083	229,269	234,962	249,702		
	Total	2,015,128	2,125,465	2,161,577	2,508,289	1,191,757	13.0%



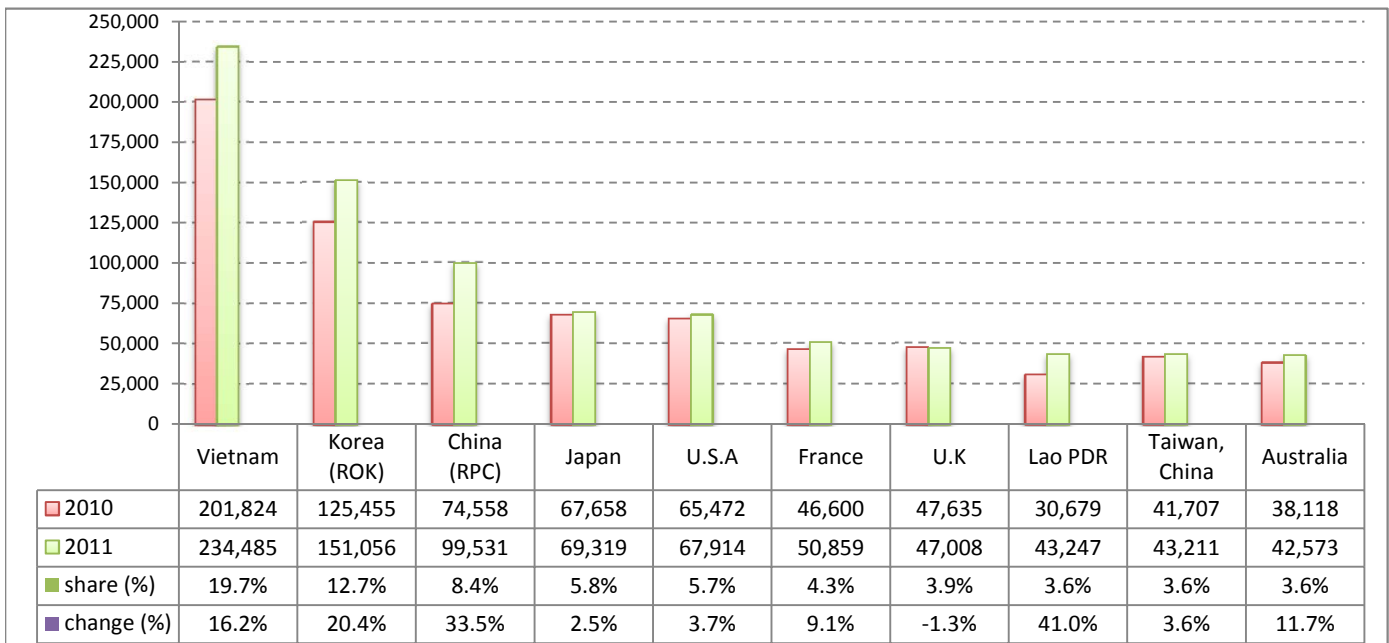
Executive Summary Report in the First Five Months of 2011

I. International tourist arrivals to Cambodia in January - May was: **1,191,757**

II. Mode of arrivals

	visitors	share (%)
Air	624,363	52.4
Phnom Penh Int'l Airport	264,910	22.2
Siem Reap Int'l Airport	359,453	30.2
Land and Water ways	567,394	47.6
Land	530,147	44.5
Water ways	37,247	3.1
Total	1,191,757	100.0

III. Top ten markets arrivals in January - May 2011



IV. International tourist arrivals to Cambodia in January - May 2011

	Inbound		share (%)		change (%)
	2010	2011	2010	2011	2011*/10
Air	552,523	624,363	52.4	52.4	13.0
Phnom Penh Int'l Airport	243,907	264,910	23.1	22.2	8.6
Siem Reap Int'l Airport	308,616	359,453	29.3	30.2	16.5
Land and Water ways	502,298	567,394	47.6	47.6	13.0
Land	467,949	530,147	44.4	44.5	13.3
Water ways	34,349	37,247	3.3	3.1	8.4
Total	1,054,821	1,191,757	100.0	100.0	13.0

V. Remark: Percentage share of international tourist arrivals at destinations in January - May 2011

	Arrivals		share (%)		change (%)
	2010	2011	2010	2011	2011*/10
Phnom Penh & Other Destinations	489,018	510,679	46.4	42.9	4.4
Siem Reap Province	565,803	681,078	53.6	57.1	20.4
Total	1,054,821	1,191,757	100.0	100.0	13.0

VI. Outbound tourists departures in January - May 2011

	Outbound		change (%)
	2010	2011	2011*/10
Cambodian outbound tourists	194,473	242,362	24.6
International outbound tourists	998,744	1,190,158	19.2

International Tourist Arrivals to Cambodia by Country of Residence in January - May 2011

(by all mean of transportations)

Regions Country of Residence	2010		2011			share		change	
			Purpose of Visit			Total	Female	(%)	(%)
			Tourists	Business	Other			2011*	2011*/10
GRAND TOTAL	1,054,821	1,116,754	61,386	13,617	1,191,757	529,837	100.0	13.0	
Asia and the Pacific	740,000	780,737	49,399	7,087	837,223	381,400	70.3	13.1	
ASEAN	376,148	391,344	14,956	3,322	409,622	188,225	34.4	8.9	
Brunei Darussalam	166	122	7	51	180	67	0.0	8.4	
Indonesia	4,769	4,662	1,261	202	6,125	2,362	0.5	28.4	
Lao PDR	30,679	42,981	76	190	43,247	27,977	3.6	41.0	
Malaysia	31,795	36,334	2,660	131	39,125	13,509	3.3	23.1	
Myanmar	1,065	1,776	196	49	2,021	904	0.2	89.8	
Philippines	23,551	23,253	2,352	464	26,069	15,574	2.2	10.7	
Singapore	16,959	15,996	849	138	16,983	6,125	1.4	0.1	
Thailand	65,340	36,281	4,402	704	41,387	14,276	3.5	-36.7	
Vietnam	201,824	229,939	3,153	1,393	234,485	107,431	19.7	16.2	
Eastern Asia	311,190	332,568	30,579	2,337	365,484	168,626	30.7	17.4	
China (RPC)	74,558	80,589	18,363	579	99,531	44,223	8.4	33.5	
Hong Kong SAR	1,702	2,129	112	6	2,247	1,011	0.2	32.0	
Japan	67,658	66,224	2,180	915	69,319	30,832	5.8	2.5	
Korea (ROK)	125,455	144,536	5,700	820	151,056	72,983	12.7	20.4	
Mongolia	110	103	5	12	120	63	0.0	9.1	
Taiwan, China	41,707	38,987	4,219	5	43,211	19,514	3.6	3.6	
Southern Asia	7,082	6,212	1,324	405	7,941	2,077	0.7	12.1	
Afghanistan	130	60	4	8	72	17	0.0	-44.6	
Bangladesh	473	364	95	65	524	66	0.0	10.8	
Bhutan		19	2	15	36	13	0.0		
India	5,276	4,951	861	185	5,997	1,693	0.5	13.7	
Nepal	403	295	111	42	448	104	0.0	11.2	
Pakistan	379	237	166	53	456	99	0.0	20.3	
Srilanka	421	286	85	37	408	85	0.0	-3.1	
Western Asia	0	957	56	8	1,021	533	0.1		
Kazakhstan		655	46	5	706	325	0.1		
Uzbekistan		302	10	3	315	208	0.0		
Oceania	43,699	45,602	2,437	938	48,977	21,186	4.1	12.1	
Australia	38,118	39,661	2,077	835	42,573	18,649	3.6	11.7	
Fiji		41	13	8	62	20	0.0		
New Zealand	5,581	5,900	347	95	6,342	2,517	0.5	13.6	
Other Asia & the Pacific	1,881	4,054	47	77	4,178	753	0.4	122.1	
Europe	217,770	237,915	7,512	3,856	249,283	104,080	20.9	14.5	
Northern Europe	70,246	67,762	2,475	957	71,194	27,399	6.0	1.3	
Denmark	4,197	4,560	136	55	4,751	1,991	0.4	13.2	
Finland	3,004	3,399	95	84	3,578	1,309	0.3	19.1	
Iceland	136	175	4	0	179	61	0.0	31.6	
Ireland	3,311	3,004	106	50	3,160	1,107	0.3	-4.6	
Norway	4,236	4,214	138	46	4,398	1,856	0.4	3.8	
Sweden	7,727	7,812	227	81	8,120	3,185	0.7	5.1	
United Kingdom	47,635	44,598	1,769	641	47,008	17,890	3.9	-1.3	
Western Europe	104,293	104,523	4,032	2,303	110,858	45,127	9.3	6.3	
Austria	4,244	3,662	65	43	3,770	1,419	0.3	-11.2	
Belgium	6,012	5,491	192	141	5,824	2,290	0.5	-3.1	
France	46,600	46,993	2,586	1,280	50,859	21,559	4.3	9.1	
Germany	30,317	31,126	663	552	32,341	12,756	2.7	6.7	
Luxembourg	307	224	7	12	243	99	0.0	-20.8	
Monaco		23	0	2	25	9	0.0		
Netherlands	9,721	9,127	270	159	9,556	3,704	0.8	-1.7	
Switzerland	7,092	7,877	249	114	8,240	3,291	0.7	16.2	
Eastern Europe	25,213	44,661	488	168	45,317	23,721	3.8	79.7	
Bulgaria	256	199	3	7	209	109	0.0	-18.4	
Czech Republic	1,629	1,684	18	7	1,709	723	0.1	4.9	
Estonia		530	11	7	548	209	0.0		
Hungary	1,766	1,491	40	7	1,538	705	0.1	-12.9	
Lithuania		891	5	1	897	476	0.1		
Poland	3,781	4,120	23	33	4,176	2,155	0.4	10.4	
Romania	761	451	7	5	463	249	0.0	-39.2	
Russian Federation	15,181	32,808	339	68	33,215	17,711	2.8	118.8	
Slovakia	548	611	11	21	643	269	0.1	17.3	
Ukraine	1,291	1,876	31	12	1,919	1,115	0.2	48.6	

Source: Statistics and ICT Department, MOT

International Tourist Arrivals to Cambodia by Country of Residence in January - May 2011

(by all mean of transportations)

Regions Country of Residence	2010		2011			share		change	
			Purpose of Visit			Total	Female	(%)	(%)
			Tourists	Business	Other			2011*	2011*/10
GRAND TOTAL	1,054,821	1,116,754	61,386	13,617	1,191,757	529,837	100.0	13.0	
Southern Europe	16,482	17,230	484	373	18,087	7,175	1.5	9.7	
Croatia	203	206	16	7	229	84	0.0	12.8	
Greece	629	563	13	5	581	215	0.0	-7.6	
Italy	8,417	8,760	225	122	9,107	3,401	0.8	8.2	
Portugal	943	1,091	17	22	1,130	554	0.1	19.8	
Serbia		193	3	7	203	92	0.0		
Slovenia	334	363	4	4	371	161	0.0	11.1	
Spain	5,043	4,784	135	116	5,035	2,211	0.4	-0.2	
Turkey	913	1,270	71	90	1,431	457	0.1	56.7	
Other Europe	1,536	3,739	33	55	3,827	658	0.3	149.2	
Americas	91,148	91,980	4,177	2,526	98,683	42,124	8.3	8.3	
Argentina	1,085	1,786	3	19	1,808	907	0.2	66.6	
Brazil	1,146	1,636	12	24	1,672	802	0.1	45.9	
Canada	19,316	19,904	849	245	20,998	9,312	1.8	8.7	
Chile	1,083	1,210	44	18	1,272	585	0.1	17.5	
Colombia	467	1,260	18	11	1,289	646	0.1	176.0	
Costa Rica		108	7	2	117	75	0.0		
Ecuador		66	2	1	69	42	0.0		
Mexico	1,241	1,236	22	12	1,270	611	0.1	2.3	
Peru	188	207	3	8	218	91	0.0	16.0	
United States	65,472	62,592	3,188	2,134	67,914	28,272	5.7	3.7	
Uruguay	255	368	3	8	379	221	0.0	48.6	
Other Americas	895	1,607	26	44	1,677	560	0.1	87.4	
Africa	1,987	2,213	210	84	2,507	849	0.2	26.2	
Cameroon	231	165	4	6	175	33	0.0	-24.2	
Congo		64	0	5	69	8	0.0		
Ghana	248	204	11	6	221	30	0.0	-10.9	
Kenya		95	3	16	114	55	0.0		
Liberia		214	3	0	217	47	0.0		
Nigeria	312	99	122	8	229	32	0.0	-26.6	
Sudan	19	6	1	2	9	3	0.0	-52.6	
South Africa	1,002	1,095	63	12	1,170	478	0.1	16.8	
Uganda		128	0	7	135	105	0.0		
Other Africa	175	143	3	22	168	58	0.0	-4.0	
Middle East	3,916	3,909	88	64	4,061	1,384	0.3	3.7	
Egypt	109	48	1	12	61	11	0.0	-44.0	
Iran	206	311	6	2	319	44	0.0	54.9	
Iraq		12	2	7	21	2	0.0		
Israel	3,278	3,054	73	17	3,144	1,233	0.3	-4.1	
Kuwait	188	171	0	0	171	5	0.0	-9.0	
Oman		40	0	5	45	9	0.0		
Palestine		16	1	0	17	2	0.0		
Qatar		41	0	0	41	20	0.0		
Saudi Arabia	18	22	1	4	27	6	0.0	50.0	
United Arab Emirates		46	0	1	47	6	0.0		
Yemen		45	3	2	50	9	0.0		
Other Middle East	117	103	1	14	118	37	0.0	0.9	

Remark:

- Cambodian Overseas:	31,804
- Cambodian Residence:	219,273
- Cambodian outbound tourist departures:	242,362
- International outbound tourist departures:	1,190,158

Executive Summary Report in May 2011

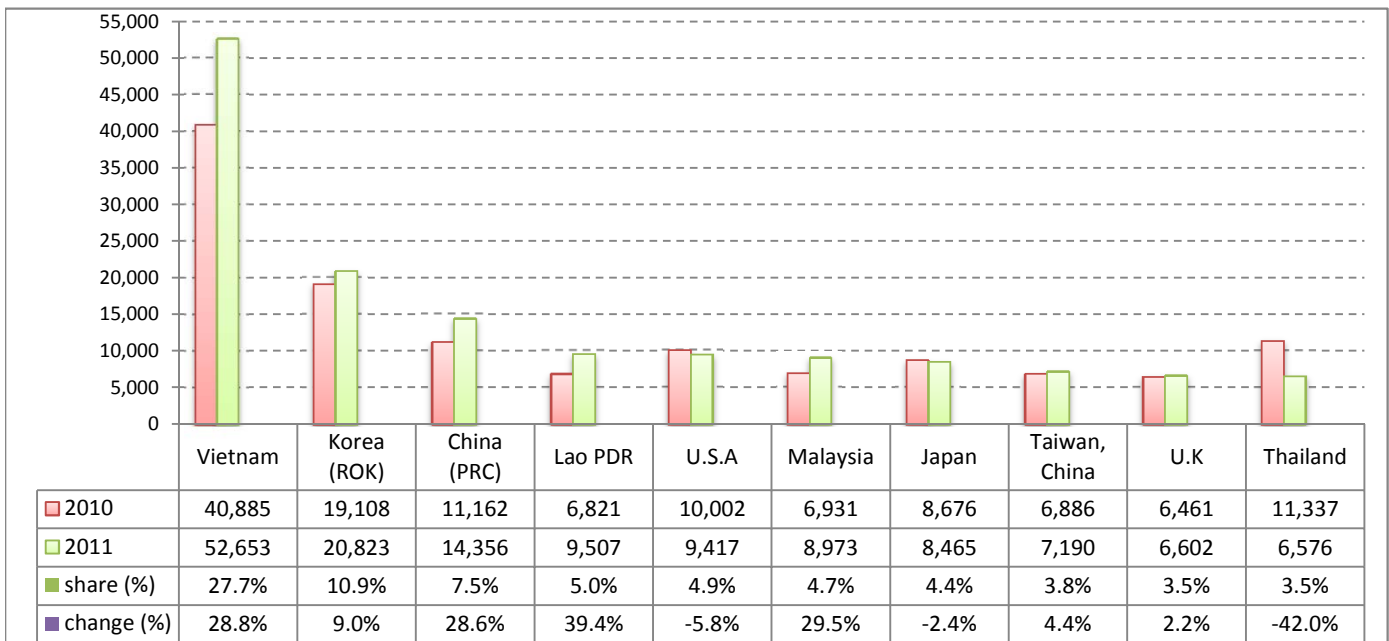
I. International tourist arrivals to Cambodia in May was:

190,258

II. Mode of arrivals

	visitors	share (%)
Air	90,269	47.4
Phnom Penh Int'l Airport	44,874	23.6
Siem Reap Int'l Airport	45,395	23.9
Land and Water ways	99,989	52.6
Land	95,915	50.4
Water ways	4,074	2.1
Total	190,258	100.0

III. Top ten markets arrivals in May 2011



IV. International tourist arrivals to Cambodia in May 2011

	Inbound		share (%)		change (%)
	2010	2011	2010	2011	2011*/10
Air	83,542	90,269	49.1	47.4	8.1
Phnom Penh Int'l Airport	41,131	44,874	24.2	23.6	9.1
Siem Reap Int'l Airport	42,411	45,395	24.9	23.9	7.0
Land and Water ways	86,622	99,989	50.9	52.6	15.4
Land	83,501	95,915	49.1	50.4	14.9
Water ways	3,121	4,074	1.8	2.1	30.5
Total	170,164	190,258	100.0	100.0	11.8

V. Remark: Percentage share of international tourist arrivals at destinations in May 2011

	Arrivals		share (%)		change (%)
	2010	2011	2010	2011	2011*/10
Phnom Penh & Other Destinations	80,262	75,105	47.2	39.5	-6.4
Siem Reap Province	89,902	115,153	52.8	60.5	28.1
Total	170,164	190,258	100.0	100.0	11.8

VI. Outbound tourists departures in May 2011

	Outbound		change (%)
	2010	2011	2011*/10
Cambodian outbound tourists	42,055	52,907	25.8
International outbound tourists	174,019	191,274	9.9

International Tourist Arrivals to Cambodia by Country of Residence in May 2011

(by all mean of transportations)

Regions Country of Residence	2010	2011			Total	Female	share	change
		Purpose of Visit					(%)	(%)
		Tourists	Business	Other			2011*	2011*/10
GRAND TOTAL	170,164	175,285	12,279	2,694	190,258	85,572	100.0	11.8
Asia and the Pacific	130,965	138,056	9,968	1,463	149,487	69,695	78.6	14.1
ASEAN	77,103	85,517	3,154	708	89,379	44,091	47.0	15.9
Brunei Darussalam	33	38	3	14	55	23	0.0	66.7
Indonesia	1,089	918	250	48	1,216	492	0.6	11.7
Lao PDR	6,821	9,428	23	56	9,507	6,728	5.0	39.4
Malaysia	6,931	8,410	526	37	8,973	3,258	4.7	29.5
Myanmar	180	227	59	9	295	129	0.2	63.9
Philippines	5,665	5,337	550	91	5,978	3,612	3.1	5.5
Singapore	4,162	3,908	212	6	4,126	1,880	2.2	-0.9
Thailand	11,337	5,609	841	126	6,576	2,394	3.5	-42.0
Vietnam	40,885	51,642	690	321	52,653	25,575	27.7	28.8
Eastern Asia	46,094	44,882	6,051	446	51,379	22,514	27.0	11.5
China (RPC)	11,162	10,656	3,607	93	14,356	5,660	7.5	28.6
Hong Kong SAR	219	495	19	2	516	254	0.3	135.6
Japan	8,676	7,804	483	178	8,465	3,489	4.4	-2.4
Korea (ROK)	19,108	19,532	1,124	167	20,823	9,854	10.9	9.0
Mongolia	43	21	2	6	29	14	0.0	-32.6
Taiwan, China	6,886	6,374	816	0	7,190	3,243	3.8	4.4
Southern Asia	1,442	1,359	281	95	1,735	431	0.9	20.3
Afghanistan	14	0	2	0	2	0	0.0	-85.7
Bangladesh	127	116	15	22	153	17	0.1	20.5
Bhutan		2	0	0	2	0	0.0	
India	1,023	1,056	180	49	1,285	350	0.7	25.6
Nepal	103	70	35	4	109	27	0.1	5.8
Pakistan	79	46	36	16	98	26	0.1	24.1
Srilanka	96	69	13	4	86	11	0.0	-10.4
Western Asia	0	143	12	0	155	78	0.1	
Kazakhstan		65	9	0	74	22	0.0	
Uzbekistan		78	3	0	81	56	0.0	
Oceania	5,826	5,866	465	197	6,528	2,538	3.4	12.0
Australia	4,868	4,808	386	181	5,375	2,097	2.8	10.4
Fiji		4	1	1	6	2	0.0	
New Zealand	958	1,054	78	15	1,147	439	0.6	19.7
Other Asia & the Pacific	500	289	5	17	311	43	0.2	-37.8
Europe	24,620	23,987	1,470	717	26,174	10,012	13.8	6.3
Northern Europe	8,684	8,067	486	178	8,731	3,035	4.6	0.5
Denmark	418	373	24	14	411	158	0.2	-1.7
Finland	259	230	15	20	265	85	0.1	2.3
Iceland	2	52	0	0	52	20	0.0	2500.0
Ireland	542	445	26	10	481	172	0.3	-11.3
Norway	380	298	15	6	319	104	0.2	-16.1
Sweden	622	554	28	19	601	206	0.3	-3.4
United Kingdom	6,461	6,115	378	109	6,602	2,290	3.5	2.2
Western Europe	11,085	9,943	784	441	11,168	4,102	5.9	0.7
Austria	290	211	16	17	244	74	0.1	-15.9
Belgium	689	589	27	27	643	243	0.3	-6.7
France	5,479	5,150	521	220	5,891	2,241	3.1	7.5
Germany	2,482	2,262	118	129	2,509	850	1.3	1.1
Luxembourg	26	17	3	2	22	9	0.0	-15.4
Monaco		8	0	0	8	5	0.0	
Netherlands	1,399	1,108	50	26	1,184	459	0.6	-15.4
Switzerland	720	598	49	20	667	221	0.4	-7.4
Eastern Europe	2,373	3,935	88	30	4,053	2,130	2.1	70.8
Bulgaria	19	18	2	2	22	5	0.0	15.8
Czech Republic	101	120	7	0	127	55	0.1	25.7
Estonia		28	1	2	31	14	0.0	
Hungary	62	112	2	1	115	62	0.1	85.5
Lithuania		32	0	1	33	17	0.0	
Poland	332	348	5	6	359	176	0.2	8.1
Romania	47	33	3	4	40	17	0.0	-14.9
Russian Federation	1,556	3,005	60	11	3,076	1,662	1.6	97.7
Slovakia	69	50	4	2	56	26	0.0	-18.8
Ukraine	187	189	4	1	194	96	0.1	3.7

International Tourist Arrivals to Cambodia by Country of Residence in May 2011

(by all mean of transportations)

Regions Country of Residence	2010		2011			share		change	
			Purpose of Visit			Total	Female	(%)	(%)
			Tourists	Business	Other			2011*	2011*/10
GRAND TOTAL	170,164	175,285	12,279	2,694	190,258	85,572	100.0	11.8	
Southern Europe	2,081	1,769	108	54	1,931	696	1.0	-7.2	
Croatia	15	9	5	1	15	1	0.0	0.0	
Greece	76	41	5	0	46	9	0.0	-39.5	
Italy	666	604	43	19	666	197	0.4	0.0	
Portugal	89	113	0	2	115	48	0.1	29.2	
Serbia		10	1	1	12	3	0.0		
Slovenia	16	29	1	0	30	10	0.0	87.5	
Spain	1,056	833	39	29	901	395	0.5	-14.7	
Turkey	163	130	14	2	146	33	0.1	-10.4	
Other Europe	397	273	4	14	291	49	0.2	-26.7	
Americas	13,766	12,473	791	468	13,732	5,636	7.2	-0.2	
Argentina	120	166	1	0	167	68	0.1	39.2	
Brazil	190	269	1	7	277	139	0.1	45.8	
Canada	2,528	2,556	175	48	2,779	1,253	1.5	9.9	
Chile	143	155	1	0	156	73	0.1	9.1	
Colombia	40	62	1	3	66	37	0.0	65.0	
Costa Rica		14	1	0	15	8	0.0		
Ecuador		14	1	0	15	7	0.0		
Mexico	267	249	6	5	260	118	0.1	-2.6	
Peru	27	47	1	2	50	22	0.0	85.2	
United States	10,002	8,428	598	391	9,417	3,639	4.9	-5.8	
Uruguay	208	260	0	0	260	181	0.1	25.0	
Other Americas	241	253	5	12	270	91	0.1	12.0	
Africa	362	366	27	20	413	125	0.2	14.1	
Cameroon	44	35	0	0	35	8	0.0	-20.5	
Congo		20	0	2	22	0	0.0		
Ghana	31	46	1	1	48	4	0.0	54.8	
Kenya		21	2	5	28	10	0.0		
Liberia		49	1	0	50	12	0.0		
Nigeria	71	11	18	2	31	3	0.0	-56.3	
Sudan	2	0	0	2	2	0	0.0	0.0	
South Africa	160	146	5	2	153	56	0.1	-4.4	
Uganda		32	0	1	33	27	0.0		
Other Africa	54	6	0	5	11	5	0.0	-79.6	
Middle East	451	403	23	26	452	104	0.2	0.2	
Egypt	24	12	0	6	18	4	0.0	-25.0	
Iran	71	47	2	0	49	6	0.0	-31.0	
Iraq		3	0	4	7	0	0.0		
Israel	285	275	20	10	305	83	0.2	7.0	
Kuwait	27	27	0	0	27	0	0.0	0.0	
Oman		7	0	2	9	1	0.0		
Palestine		2	0	0	2	0	0.0		
Qatar		8	0	0	8	4	0.0		
Saudi Arabia	5	3	0	0	3	0	0.0	-40.0	
United Arab Emirates		4	0	1	5	0	0.0		
Yemen		12	1	0	13	4	0.0		
Other Middle East	39	3	0	3	6	2	0.0	-84.6	

Remark:

- Cambodian Overseas:	5,110
- Cambodian Residence:	44,818
- Cambodian outbound tourist departures:	52,907
- International outbound tourist departures:	191,274

COMPILED BY:

1. Mr. Kong Sopheareak

Director
Statistics & Tourism Information Department
Fax: +855 23 885003
E-mail: kong@mot.gov.kh

2. Mr. Horth Vanny

Chief of Tourism Statistics Office
Compile and data analysis
Tel.: +855 12 827664