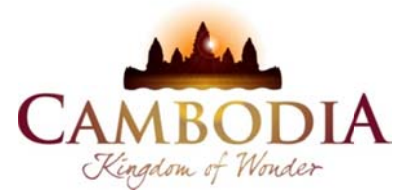




KINGDOM OF CAMBODIA  
NATION RELIGION KING



# TOURISM STATISTICS REPORT

# September 2012

**MINISTRY OF TOURISM**

Statistics and Tourism Information Department

No. A3, Street 169, Sangkat Veal Vong, Khan 7 Makara, Phnom Penh, Cambodia.

Fax: +855 23 885003

E-mail: [kong@mot.gov.kh](mailto:kong@mot.gov.kh)

Web site: [www.mot.gov.kh](http://www.mot.gov.kh)

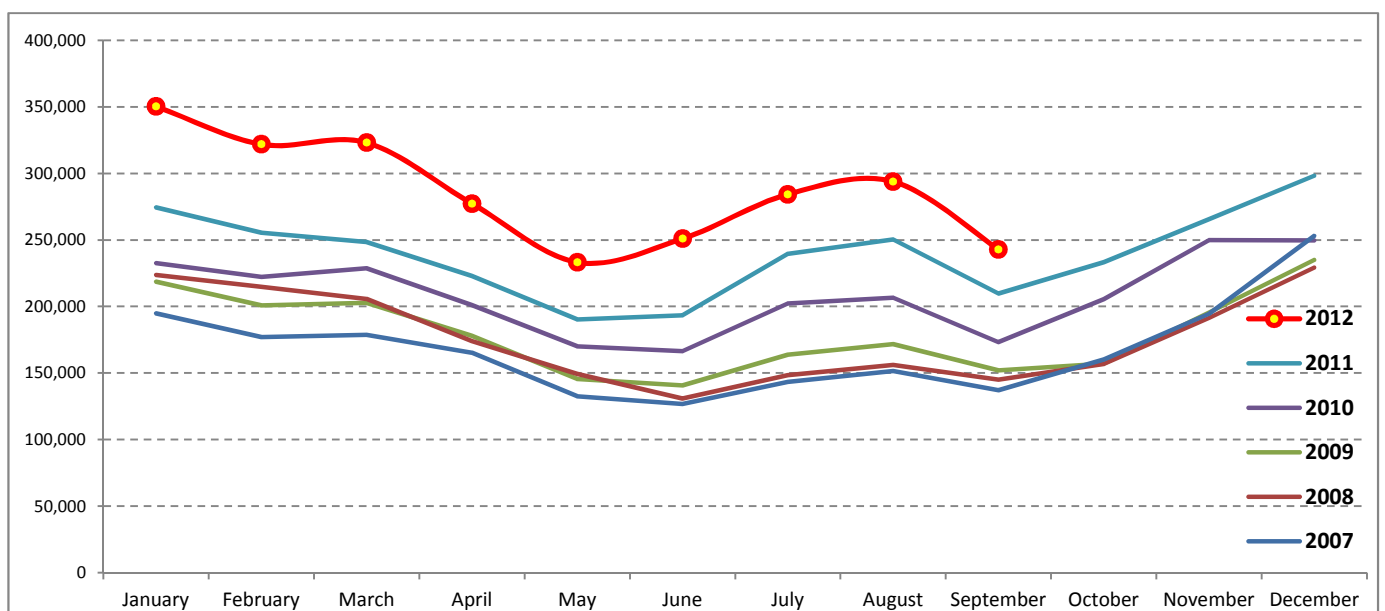
## Tourism Highlights

### International Tourist Arrivals, Average Length of Stay, Hotels Occupancy & Tourism Receipts 1993 - 2011

Years	Tourist Arrivals		Average Length	Hotels Occupancy	Tourism Receipts
	number	change (%)	of Stay (days)	(%)	(Million US\$)
1993	118,183	-	N/A	N/A	N/A
1994	176,617	49.4	N/A	N/A	N/A
1995	219,680	24.4	8.00	37.00	100
1996	260,489	18.6	7.50	40.00	118
1997	218,843	-16.0	6.40	30.00	103
1998	286,524	30.9	5.20	40.00	166
1999	367,743	28.3	5.50	44.00	190
2000	466,365	26.8	5.50	45.00	228
2001	604,919	29.7	5.50	48.00	304
2002	786,524	30.0	5.80	50.00	379
2003	701,014	-10.9	5.50	50.00	347
2004	1,055,202	50.5	6.30	52.00	578
2005	1,421,615	34.7	6.30	52.00	832
2006	1,700,041	19.6	6.50	54.79	1,049
2007	2,015,128	18.5	6.50	54.79	1,400
2008	2,125,465	5.5	6.65	62.68	1,595
2009	2,161,577	1.7	6.45	63.57	1,561
2010	2,508,289	16.0	6.45	65.74	1,786
2011	2,881,862	14.9	6.50	66.15	1,912

### International tourist arrivals to Cambodia

Destination	Months	2007	2008	2009	2010	2011	2012	change (%) 2012*/11
<b>Cambodia</b>	<b>Q1</b>	<b>550,813</b>	<b>644,205</b>	<b>622,288</b>	<b>683,692</b>	<b>778,467</b>	<b>995,210</b>	<b>27.8</b>
<i>International tourist arrivals</i>	January	194,932	223,581	218,691	232,590	274,471	350,257	27.6
<i>by all means of</i>	February	177,130	214,902	200,789	222,354	255,499	321,870	26.0
<i>transportations</i>	March	178,751	205,722	202,808	228,748	248,497	323,083	30.0
	<b>Q2</b>	<b>424,536</b>	<b>454,031</b>	<b>464,230</b>	<b>537,464</b>	<b>606,562</b>	<b>761,442</b>	<b>25.5</b>
	April	165,347	173,903	177,955	200,965	223,032	277,304	24.3
	May	132,512	149,275	145,564	170,164	190,258	233,220	22.6
	June	126,677	130,853	140,711	166,335	193,272	250,918	29.8
	<b>Q3</b>	<b>431,815</b>	<b>449,693</b>	<b>487,422</b>	<b>582,024</b>	<b>699,760</b>	<b>820,888</b>	<b>17.3</b>
	July	143,310	148,449	163,817	202,349	239,527	284,282	18.7
	August	151,478	156,098	171,668	206,563	250,429	293,859	17.3
	September	137,027	145,146	151,937	173,112	209,804	242,747	15.7
	<b>Q4</b>	<b>607,964</b>	<b>577,536</b>	<b>587,637</b>	<b>705,109</b>	<b>797,073</b>	<b>0</b>	
	October	160,235	156,718	157,105	205,515	233,190		
	November	194,646	191,549	195,570	249,892	265,539		
	December	253,083	229,269	234,962	249,702	298,344		
	<b>Total</b>	<b>2,015,128</b>	<b>2,125,465</b>	<b>2,161,577</b>	<b>2,508,289</b>	<b>2,881,862</b>	<b>2,577,540</b>	<b>23.6</b>



Source: Statistics and Tourism Information Department, MOT

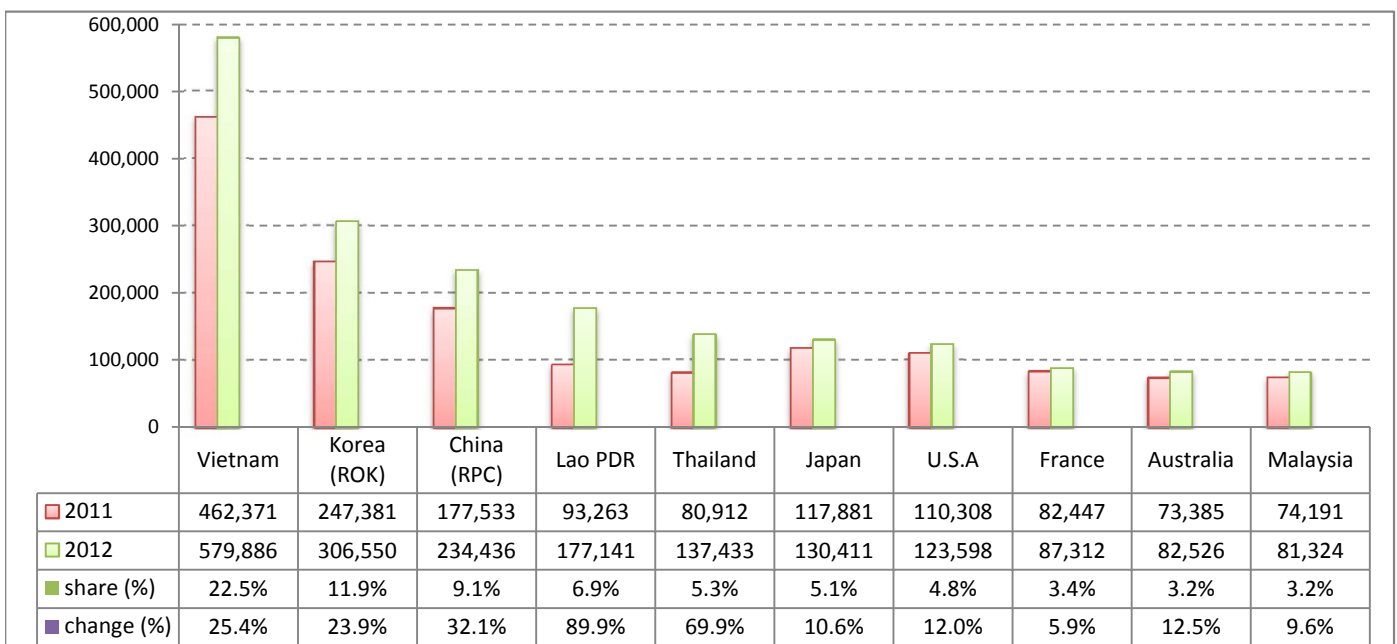
## Executive Summary Report in the First Nine Months of 2012

I. International tourist arrivals to Cambodia in January - September was: **2,577,540**

### II. Mode of arrivals

	visitors	share (%)
<b>Air</b>	<b>1,221,420</b>	<b>47.4</b>
Phnom Penh Int'l Airport	510,382	19.8
Siem Reap Int'l Airport	711,038	27.6
<b>Land and Water ways</b>	<b>1,356,120</b>	<b>52.6</b>
Land	1,299,804	50.4
Waterway	56,316	2.2
<b>Total</b>	<b>2,577,540</b>	<b>100.0</b>

### III. Top ten markets arrivals in January - September 2012



### IV. International tourist arrivals to Cambodia in January - September 2012

	Inbound tourism		share (%)		change (%)
	2011	2012	2011	2012	2012*/11
<b>Air</b>	<b>1,049,660</b>	<b>1,221,420</b>	<b>50.3</b>	<b>47.4</b>	<b>16.4</b>
Phnom Penh Int'l Airport	467,995	510,382	22.4	19.8	9.1
Siem Reap Int'l Airport	581,665	711,038	27.9	27.6	22.2
<b>Land and Water ways</b>	<b>1,035,129</b>	<b>1,356,120</b>	<b>49.7</b>	<b>52.6</b>	<b>31.0</b>
Land	975,127	1,299,804	46.8	50.4	33.3
Waterway	60,002	56,316	2.9	2.2	-6.1
<b>Total</b>	<b>2,084,789</b>	<b>2,577,540</b>	<b>100.0</b>	<b>100.0</b>	<b>23.6</b>

### V. Remark: Percentage share of international tourist arrivals at destinations in January - September 2012

	Arrivals		share (%)		change (%)
	2011	2012	2011	2012	2012*/11
Phnom Penh & Other Destinations	917,685	1,090,327	44.0	42.3	18.8
Siem Reap Province	1,167,104	1,487,213	56.0	57.7	27.4
<b>Total</b>	<b>2,084,789</b>	<b>2,577,540</b>	<b>100.0</b>	<b>100.0</b>	<b>23.6</b>

### VI. Outbound tourists departures in January - September 2012

	Outbound tourism		change (%)
	2011	2012	2012*/11
Cambodian outbound tourists	509,183	585,805	15.0
International outbound tourists	2,083,088	2,537,141	21.8

## International Tourist Arrivals to Cambodia by Country of Residence in January - September 2012

(by all mean of transportations)

Regions Country of Residence	2011		2012			share		change	
			Purpose of Visit			Total	Female	2012*	2012*/11
			Holiday	Business	Other				
<b>GRAND TOTAL</b>	<b>2,084,789</b>	<b>2,363,046</b>	<b>120,931</b>	<b>93,563</b>	<b>2,577,540</b>	<b>1,163,373</b>	<b>100.0</b>	<b>23.6</b>	
<b>Asia and the Pacific</b>	<b>1,535,303</b>	<b>1,824,248</b>	<b>95,368</b>	<b>45,826</b>	<b>1,965,442</b>	<b>904,003</b>	<b>76.3</b>	<b>28.0</b>	
<b>ASEAN</b>	<b>807,795</b>	<b>1,050,327</b>	<b>24,647</b>	<b>27,184</b>	<b>1,102,158</b>	<b>511,390</b>	<b>42.8</b>	<b>36.4</b>	
Brunei Darussalam	356	571	12	98	681	270	0.0	91.3	
Indonesia	11,394	13,807	1,894	391	16,092	5,314	0.6	41.2	
Lao PDR	93,263	176,533	82	526	177,141	119,873	6.9	89.9	
Malaysia	74,191	75,978	4,754	592	81,324	28,053	3.2	9.6	
Myanmar	3,031	2,712	449	197	3,358	1,375	0.1	10.8	
Philippines	49,250	65,614	4,550	780	70,944	42,312	2.8	44.0	
Singapore	33,027	33,547	1,485	267	35,299	12,268	1.4	6.9	
Thailand	80,912	124,163	6,359	6,911	137,433	61,581	5.3	69.9	
Vietnam	462,371	557,402	5,062	17,422	579,886	240,344	22.5	25.4	
<b>Eastern Asia</b>	<b>621,898</b>	<b>674,631</b>	<b>62,295</b>	<b>7,554</b>	<b>744,480</b>	<b>344,691</b>	<b>28.9</b>	<b>19.7</b>	
China (RPC)	177,533	196,297	35,998	2,141	234,436	106,951	9.1	32.1	
Hong Kong SAR	4,023	5,156	209	46	5,411	2,577	0.2	34.5	
Japan	117,881	122,009	6,407	1,995	130,411	56,929	5.1	10.6	
Korea (ROK)	247,381	292,810	11,504	2,236	306,550	149,734	11.9	23.9	
Mongolia	187	216	19	32	267	136	0.0	42.8	
Taiwan, China	74,893	58,143	8,158	1,104	67,405	28,364	2.6	-10.0	
<b>Southern Asia</b>	<b>14,254</b>	<b>13,945</b>	<b>2,595</b>	<b>800</b>	<b>17,340</b>	<b>4,552</b>	<b>0.7</b>	<b>21.7</b>	
Afghanistan	99	78	10	22	110	14	0.0	11.1	
Bangladesh	965	636	160	102	898	112	0.0	-6.9	
Bhutan	66	85	4	26	115	20	0.0	74.2	
India	10,736	11,030	1,778	431	13,239	3,755	0.5	23.3	
Nepal	789	852	123	71	1,046	281	0.0	32.6	
Pakistan	791	536	281	62	879	158	0.0	11.1	
Srilanka	808	728	239	86	1,053	212	0.0	30.3	
<b>Western Asia</b>	<b>1,511</b>	<b>1,565</b>	<b>148</b>	<b>15</b>	<b>1,728</b>	<b>959</b>	<b>0.1</b>	<b>14.4</b>	
Kazakhstan	919	1,172	115	11	1,298	666	0.1	41.2	
Uzbekistan	592	393	33	4	430	293	0.0	-27.4	
<b>Oceania</b>	<b>84,699</b>	<b>80,726</b>	<b>4,836</b>	<b>9,634</b>	<b>95,196</b>	<b>40,705</b>	<b>3.7</b>	<b>12.4</b>	
Australia	73,385	70,122	4,082	8,322	82,526	35,686	3.2	12.5	
Fiji	85	61	10	4	75	21	0.0	-11.8	
New Zealand	11,229	10,543	744	1,308	12,595	4,998	0.5	12.2	
Other Asia & the Pacific	5,146	3,054	847	639	4,540	1,706	0.2	-11.8	
<b>Europe</b>	<b>381,877</b>	<b>388,798</b>	<b>16,081</b>	<b>20,497</b>	<b>425,376</b>	<b>180,860</b>	<b>16.5</b>	<b>11.4</b>	
<b>Northern Europe</b>	<b>110,452</b>	<b>107,760</b>	<b>5,019</b>	<b>2,019</b>	<b>114,798</b>	<b>43,819</b>	<b>4.5</b>	<b>3.9</b>	
Denmark	7,006	6,722	211	120	7,053	2,819	0.3	0.7	
Finland	4,637	4,034	207	144	4,385	1,592	0.2	-5.4	
Iceland	257	393	17	6	416	153	0.0	61.9	
Ireland	6,268	6,087	287	100	6,474	2,615	0.3	3.3	
Norway	6,047	5,731	161	136	6,028	2,400	0.2	-0.3	
Sweden	10,229	10,254	356	224	10,834	4,067	0.4	5.9	
United Kingdom	76,008	74,539	3,780	1,289	79,608	30,173	3.1	4.7	
<b>Western Europe</b>	<b>169,711</b>	<b>158,365</b>	<b>7,750</b>	<b>16,915</b>	<b>183,030</b>	<b>75,815</b>	<b>7.1</b>	<b>7.8</b>	
Austria	5,306	5,391	134	255	5,780	2,321	0.2	8.9	
Belgium	9,788	9,460	460	589	10,509	4,137	0.4	7.4	
France	82,447	68,846	4,738	13,728	87,312	36,938	3.4	5.9	
Germany	44,073	46,815	1,312	1,259	49,386	19,791	1.9	12.1	
Luxembourg	365	287	7	12	306	108	0.0	-16.2	
Monaco	58	36	0	0	36	19	0.0	-37.9	
Netherlands	16,280	16,246	562	376	17,184	6,834	0.7	5.6	
Switzerland	11,394	11,284	537	696	12,517	5,667	0.5	9.9	
<b>Eastern Europe</b>	<b>60,136</b>	<b>80,149</b>	<b>1,207</b>	<b>351</b>	<b>81,707</b>	<b>42,040</b>	<b>3.2</b>	<b>35.9</b>	
Bulgaria	277	401	11	8	420	217	0.0	51.6	
Czech Republic	2,215	2,706	56	21	2,783	1,181	0.1	25.6	
Estonia	625	546	17	14	577	249	0.0	-7.7	
Hungary	1,872	1,634	34	33	1,701	731	0.1	-9.1	
Lithuania	972	686	20	6	712	364	0.0	-26.7	
Poland	5,649	5,951	47	44	6,042	2,926	0.2	7.0	
Romania	687	815	43	11	869	456	0.0	26.5	
Russian Federation	44,194	63,201	806	166	64,173	33,839	2.5	45.2	
Slovakia	867	1,077	80	37	1,194	463	0.0	37.7	
Ukraine	2,778	3,132	93	11	3,236	1,614	0.1	16.5	

## International Tourist Arrivals to Cambodia by Country of Residence in January - September 2012

(by all mean of transportations)

Regions Country of Residence	2011		2012			share		change	
			Purpose of Visit			Total	Female	(%)	(%)
			Holiday	Business	Other			2012*	2012*/11
<b>GRAND TOTAL</b>	<b>2,084,789</b>	<b>2,363,046</b>	<b>120,931</b>	<b>93,563</b>	<b>2,577,540</b>	<b>1,163,373</b>	<b>100.0</b>	<b>23.6</b>	
<b>Southern Europe</b>	<b>37,021</b>	<b>39,880</b>	<b>1,048</b>	<b>565</b>	<b>41,493</b>	<b>17,389</b>	<b>1.6</b>	<b>12.1</b>	
Croatia	321	467	15	5	487	239	0.0	51.7	
Greece	870	774	16	10	800	285	0.0	-8.0	
Italy	15,021	15,436	489	211	16,136	5,978	0.6	7.4	
Portugal	2,140	1,992	48	22	2,062	926	0.1	-3.6	
Serbia	286	232	18	4	254	104	0.0	-11.2	
Slovenia	526	625	19	2	646	263	0.0	22.8	
Spain	15,734	18,556	271	242	19,069	9,057	0.7	21.2	
Turkey	2,123	1,798	172	69	2,039	537	0.1	-4.0	
Other Europe	4,557	2,644	1,057	647	4,348	1,797	0.2	-4.6	
<b>Americas</b>	<b>156,788</b>	<b>139,366</b>	<b>8,693</b>	<b>26,906</b>	<b>174,965</b>	<b>74,399</b>	<b>6.8</b>	<b>11.6</b>	
Argentina	4,399	3,414	27	86	3,527	1,680	0.1	-19.8	
Brazil	2,488	3,441	35	43	3,519	1,692	0.1	41.4	
Canada	30,333	29,536	1,484	3,378	34,398	14,890	1.3	13.4	
Chile	1,854	2,202	56	15	2,273	1,106	0.1	22.6	
Colombia	1,735	1,040	30	32	1,102	528	0.0	-36.5	
Costa Rica	167	186	6	6	198	101	0.0	18.6	
Ecuador	121	121	7	14	142	66	0.0	17.4	
Mexico	2,395	2,730	50	29	2,809	1,378	0.1	17.3	
Peru	359	379	14	5	398	170	0.0	10.9	
United States	110,308	94,180	6,557	22,861	123,598	51,517	4.8	12.0	
Uruguay	494	414	1	20	435	229	0.0	-11.9	
Other Americas	2,135	1,723	426	417	2,566	1,042	0.1	20.2	
<b>Africa</b>	<b>4,429</b>	<b>3,136</b>	<b>481</b>	<b>195</b>	<b>3,812</b>	<b>1,469</b>	<b>0.1</b>	<b>-13.9</b>	
Cameroon	335	137	4	17	158	35	0.0	-52.8	
Congo	130	39	2	6	47	12	0.0	-63.8	
Ghana	357	103	11	6	120	11	0.0	-66.4	
Kenya	204	133	18	31	182	79	0.0	-10.8	
Liberia	316	71	3	2	76	20	0.0	-75.9	
Nigeria	396	230	180	24	434	65	0.0	9.6	
Sudan	28	28	5	3	36	8	0.0	28.6	
South Africa	2,124	2,081	166	32	2,279	1,064	0.1	7.3	
Uganda	275	42	7	9	58	26	0.0	-78.9	
Other Africa	264	272	85	65	422	149	0.0	59.8	
<b>Middle East</b>	<b>6,392</b>	<b>7,498</b>	<b>308</b>	<b>139</b>	<b>7,945</b>	<b>2,642</b>	<b>0.3</b>	<b>24.3</b>	
Egypt	134	116	14	17	147	36	0.0	9.7	
Iran	537	464	7	15	486	121	0.0	-9.5	
Iraq	73	63	4	4	71	14	0.0	-2.7	
Israel	4,621	5,615	198	38	5,851	2,267	0.2	26.6	
Kuwait	421	514	1	5	520	23	0.0	23.5	
Oman	89	101	1	7	109	16	0.0	22.5	
Palestine	24	31	2	1	34	4	0.0	41.7	
Qatar	54	56	1	1	58	24	0.0	7.4	
Saudi Arabia	50	53	5	4	62	8	0.0	24.0	
United Arab Emirates	134	175	5	2	182	14	0.0	35.8	
Yemen	77	118	4	6	128	21	0.0	66.2	
Other Middle East	178	192	66	39	297	94	0.0	66.9	

### Remark:

- Cambodian outbound tourist departures: 585,805  
 - International outbound tourist departures: 2,537,141

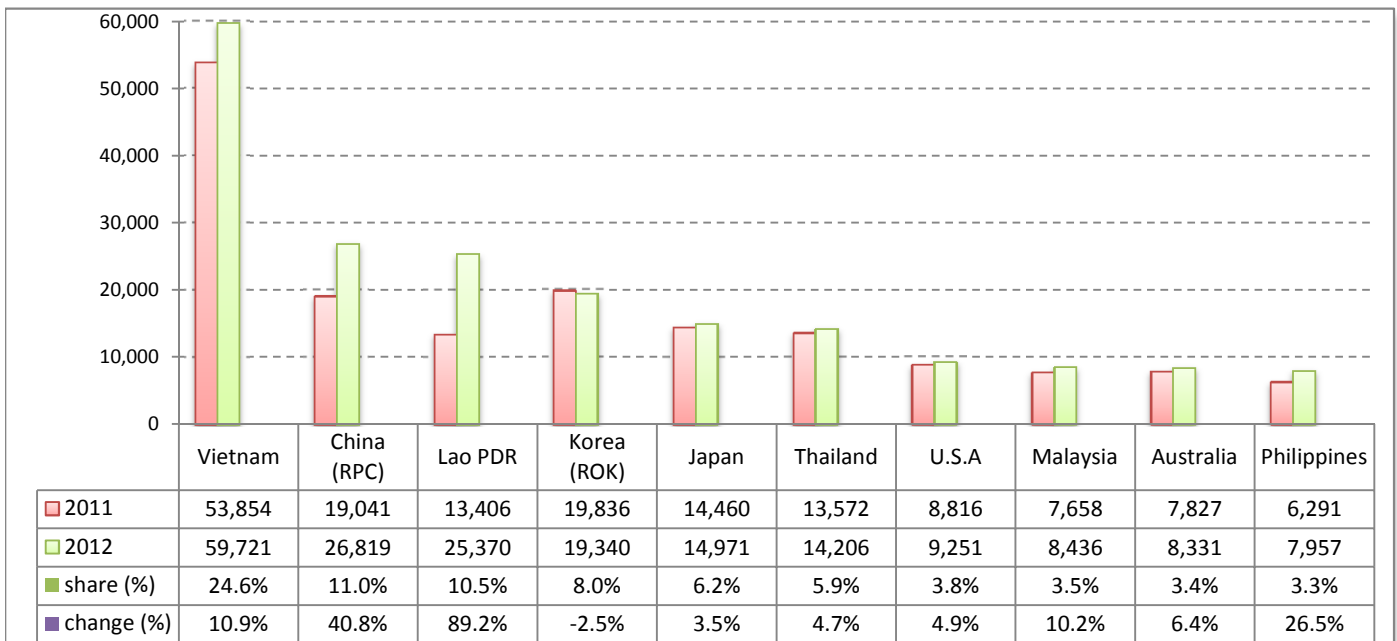
## Executive Summary Report in September 2012

I. International tourist arrivals to Cambodia in September 2012 was: **242,747**

### II. Mode of arrivals

	visitors	share (%)
<b>Air</b>	<b>108,176</b>	<b>44.6</b>
Phnom Penh Int'l Airport	50,023	20.6
Siem Reap Int'l Airport	58,153	24.0
<b>Land and Water ways</b>	<b>134,571</b>	<b>55.4</b>
Land	131,798	54.3
Waterway	2,773	1.1
<b>Total</b>	<b>242,747</b>	<b>100.0</b>

### III. Top ten markets arrivals in September 2012



### IV. International tourist arrivals to Cambodia in September 2012

	Inbound tourism		share (%)		change (%)
	2011	2012	2011	2012	2012*/11
<b>Air</b>	<b>95,279</b>	<b>108,176</b>	<b>45.4</b>	<b>44.6</b>	<b>13.5</b>
Phnom Penh Int'l Airport	45,474	50,023	21.7	20.6	10.0
Siem Reap Int'l Airport	49,805	58,153	23.7	24.0	16.8
<b>Land and Water ways</b>	<b>114,525</b>	<b>134,571</b>	<b>54.6</b>	<b>55.4</b>	<b>17.5</b>
Land	110,301	131,798	52.6	54.3	19.5
Waterway	4,224	2,773	2.0	1.1	-34.4
<b>Total</b>	<b>209,804</b>	<b>242,747</b>	<b>100.0</b>	<b>100.0</b>	<b>15.7</b>

### V. Remark: Percentage share of international tourist arrivals at destinations in September 2012

	Arrivals		share (%)		change (%)
	2011	2012	2011	2012	2012*/11
Phnom Penh & Other Destinations	90,932	121,157	43.3	49.9	33.2
Siem Reap Province	118,872	121,590	56.7	50.1	2.3
<b>Total</b>	<b>209,804</b>	<b>242,747</b>	<b>100.0</b>	<b>100.0</b>	<b>15.7</b>

### VI. Outbound tourists departures in September 2012

	Outbound tourism		change (%)
	2011	2012	2012*/11
Cambodian outbound tourists	77,264	66,002	-14.6
International outbound tourists	215,988	237,456	9.9

## International Tourist Arrivals to Cambodia by Country of Residence in September 2012

(by all mean of transportations)

Regions Country of Residence	2011	2012			Total	Female	share	change
		Purpose of Visit					(%)	(%)
		Holiday	Business	Other	2012*	2012*/11		
<b>GRAND TOTAL</b>	<b>209,804</b>	<b>220,661</b>	<b>13,610</b>	<b>8,476</b>	<b>242,747</b>	<b>104,445</b>	<b>100.0</b>	<b>15.7</b>
<b>Asia and the Pacific</b>	<b>171,532</b>	<b>186,436</b>	<b>10,614</b>	<b>4,161</b>	<b>201,211</b>	<b>88,635</b>	<b>82.9</b>	<b>17.3</b>
<b>ASEAN (South-East Asia)</b>	<b>100,036</b>	<b>116,512</b>	<b>2,698</b>	<b>2,262</b>	<b>121,472</b>	<b>54,660</b>	<b>50.0</b>	<b>21.4</b>
Brunei Darussalam	34	53	3	1	57	22	0.0	67.6
Indonesia	1,348	1,463	243	78	1,784	522	0.7	32.3
Lao PDR	13,406	25,264	14	92	25,370	16,627	10.5	89.2
Malaysia	7,658	7,782	570	84	8,436	2,506	3.5	10.2
Myanmar	223	166	40	14	220	91	0.1	-1.3
Philippines	6,291	7,511	397	49	7,957	4,620	3.3	26.5
Singapore	3,650	3,538	159	24	3,721	1,300	1.5	1.9
Thailand	13,572	12,696	701	809	14,206	5,568	5.9	4.7
Vietnam	53,854	58,039	571	1,111	59,721	23,404	24.6	10.9
<b>North-East Asia</b>	<b>60,870</b>	<b>60,094</b>	<b>6,869</b>	<b>709</b>	<b>67,672</b>	<b>29,351</b>	<b>27.9</b>	<b>11.2</b>
China (RPC)	19,041	22,829	3,772	218	26,819	12,004	11.0	40.8
Hong Kong SAR	546	321	22	1	344	152	0.1	-37.0
Japan	14,460	13,898	861	212	14,971	6,341	6.2	3.5
Korea (ROK)	19,836	17,812	1,322	206	19,340	8,419	8.0	-2.5
Mongolia	11	18	3	1	22	10	0.0	100.0
Taiwan, China	6,976	5,216	889	71	6,176	2,425	2.5	-11.5
<b>Southern Asia</b>	<b>1,561</b>	<b>1,339</b>	<b>380</b>	<b>81</b>	<b>1,800</b>	<b>360</b>	<b>0.7</b>	<b>15.3</b>
Afghanistan	10	12	2	0	14	2	0.0	40.0
Bangladesh	153	71	21	8	100	9	0.0	-34.6
Bhutan	1	2	1	1	4	1	0.0	300.0
India	1,126	1,111	276	39	1,426	286	0.6	26.6
Nepal	86	55	16	7	78	29	0.0	-9.3
Pakistan	97	28	37	9	74	15	0.0	-23.7
Sri Lanka	88	60	27	17	104	18	0.0	18.2
<b>Western Asia</b>	<b>114</b>	<b>118</b>	<b>15</b>	<b>5</b>	<b>138</b>	<b>78</b>	<b>0.1</b>	<b>21.1</b>
Kazakhstan	55	82	10	3	95	48	0.0	72.7
Uzbekistan	59	36	5	2	43	30	0.0	-27.1
<b>Oceania</b>	<b>8,737</b>	<b>8,077</b>	<b>530</b>	<b>1,001</b>	<b>9,608</b>	<b>4,011</b>	<b>4.0</b>	<b>10.0</b>
Australia	7,827	7,016	456	859	8,331	3,520	3.4	6.4
Fiji	6	6	1	1	8	3	0.0	33.3
New Zealand	904	1,055	73	141	1,269	488	0.5	40.4
Other Asia & the Pacific	214	296	122	103	521	175	0.2	143.5
<b>Europe</b>	<b>25,600</b>	<b>23,932</b>	<b>1,806</b>	<b>1,792</b>	<b>27,530</b>	<b>10,556</b>	<b>11.3</b>	<b>7.5</b>
<b>Northern Europe</b>	<b>7,371</b>	<b>6,841</b>	<b>554</b>	<b>194</b>	<b>7,589</b>	<b>2,520</b>	<b>3.1</b>	<b>3.0</b>
Denmark	342	314	31	11	356	107	0.1	4.1
Finland	177	231	22	21	274	87	0.1	54.8
Iceland	10	14	3	1	18	4	0.0	80.0
Ireland	514	433	32	13	478	185	0.2	-7.0
Norway	340	279	14	19	312	97	0.1	-8.2
Sweden	460	430	40	25	495	146	0.2	7.6
United Kingdom	5,528	5,140	412	104	5,656	1,894	2.3	2.3
<b>Western Europe</b>	<b>10,231</b>	<b>8,683</b>	<b>812</b>	<b>1,402</b>	<b>10,897</b>	<b>3,887</b>	<b>4.5</b>	<b>6.5</b>
Austria	266	289	7	25	321	128	0.1	20.7
Belgium	634	527	53	48	628	211	0.3	-0.9
France	4,688	2,987	449	1,081	4,517	1,586	1.9	-3.6
Germany	2,925	3,358	175	130	3,663	1,380	1.5	25.2
Luxembourg	16	5	1	1	7	1	0.0	-56.3
Monaco	1	1	0	0	1	0	0.0	0.0
Netherlands	1,063	922	73	46	1,041	349	0.4	-2.1
Switzerland	638	594	54	71	719	232	0.3	12.7
<b>Central / Eastern Europe</b>	<b>4,395</b>	<b>5,114</b>	<b>140</b>	<b>35</b>	<b>5,289</b>	<b>2,632</b>	<b>2.2</b>	<b>20.3</b>
Bulgaria	21	26	4	2	32	10	0.0	52.4
Czech Republic	124	123	4	4	131	50	0.1	5.6
Estonia	25	20	4	3	27	9	0.0	8.0
Hungary	59	81	1	0	82	34	0.0	39.0
Lithuania	23	25	1	0	26	13	0.0	13.0
Poland	472	380	2	0	382	176	0.2	-19.1
Romania	23	97	8	1	106	55	0.0	360.9
Russian Federation	3,306	4,025	93	18	4,136	2,139	1.7	25.1
Slovakia	59	124	13	7	144	50	0.1	144.1
Ukraine	283	213	10	0	223	96	0.1	-21.2

Source: Statistics and ICT Department, MOT

## International Tourist Arrivals to Cambodia by Country of Residence in September 2012

(by all mean of transportations)

Regions Country of Residence	2011	2012			Total	Female	share	change
		Purpose of Visit					(%)	(%)
		Holiday	Business	Other	2012*	2012*/11		
<b>GRAND TOTAL</b>	<b>209,804</b>	<b>220,661</b>	<b>13,610</b>	<b>8,476</b>	<b>242,747</b>	<b>104,445</b>	<b>100.0</b>	<b>15.7</b>
<b>Southern Europe</b>	<b>3,440</b>	<b>3,058</b>	<b>124</b>	<b>55</b>	<b>3,237</b>	<b>1,319</b>	<b>1.3</b>	<b>-5.9</b>
Croatia	14	15	2	1	18	5	0.0	28.6
Greece	53	72	3	0	75	27	0.0	41.5
Italy	745	805	55	24	884	288	0.4	18.7
Portugal	197	197	7	1	205	88	0.1	4.1
Serbia	18	18	1	1	20	4	0.0	11.1
Slovenia	34	14	2	0	16	6	0.0	-52.9
Spain	2,164	1,827	35	26	1,888	871	0.8	-12.8
Turkey	215	110	19	2	131	30	0.1	-39.1
Other Europe	163	236	176	106	518	198	0.2	217.8
<b>Americas</b>	<b>11,623</b>	<b>9,217</b>	<b>1,049</b>	<b>2,455</b>	<b>12,721</b>	<b>4,832</b>	<b>5.2</b>	<b>9.4</b>
Argentina	250	160	4	7	171	71	0.1	-31.6
Brazil	216	272	3	2	277	128	0.1	28.2
Canada	1,675	1,587	168	296	2,051	808	0.8	22.4
Chile	135	146	3	3	152	69	0.1	12.6
Colombia	64	118	3	4	125	67	0.1	95.3
Costa Rica	14	14	2	1	17	6	0.0	21.4
Ecuador	9	29	3	1	33	16	0.0	266.7
Mexico	261	198	6	2	206	105	0.1	-21.1
Peru	49	34	1	1	36	16	0.0	-26.5
United States	8,816	6,430	760	2,061	9,251	3,407	3.8	4.9
Uruguay	4	25	1	4	30	12	0.0	650.0
Other Americas	130	204	95	73	372	127	0.2	186.2
<b>Africa</b>	<b>414</b>	<b>305</b>	<b>85</b>	<b>35</b>	<b>425</b>	<b>153</b>	<b>0.2</b>	<b>2.7</b>
Cameroon	16	13	1	1	15	3	0.0	-6.3
Congo	6	3	2	1	6	2	0.0	0.0
Ghana	19	6	2	1	9	0	0.0	-52.6
Kenya	9	13	3	3	19	9	0.0	111.1
Liberia	3	2	1	1	4	1	0.0	33.3
Nigeria	47	14	23	5	42	3	0.0	-10.6
Sudan	1	2	1	1	4	1	0.0	300.0
South Africa	257	206	25	3	234	105	0.1	-8.9
Uganda	29	3	1	1	5	3	0.0	-82.8
Other Africa	27	43	26	18	87	26	0.0	222.2
<b>Middle East</b>	<b>635</b>	<b>771</b>	<b>56</b>	<b>33</b>	<b>860</b>	<b>269</b>	<b>0.4</b>	<b>35.4</b>
Egypt	34	23	5	5	33	14	0.0	-2.9
Iran	56	42	3	1	46	9	0.0	-17.9
Iraq	16	7	2	1	10	3	0.0	-37.5
Israel	425	542	20	8	570	207	0.2	34.1
Kuwait	42	68	1	3	72	5	0.0	71.4
Oman	8	12	1	1	14	5	0.0	75.0
Palestine	4	6	2	1	9	1	0.0	125.0
Qatar	0	2	1	1	4	0	0.0	
Saudi Arabia	3	3	2	1	6	1	0.0	100.0
United Arab Emirates	25	22	5	2	29	5	0.0	16.0
Yemen	3	9	1	1	11	1	0.0	266.7
Other Middle East	19	35	13	8	56	18	0.0	194.7

### Remark:

- Cambodian outbound tourist departures: 66,002
- International outbound tourist departures: 237,456



**COMPILED BY:**

1. Mr. Kong Sopheareak

Director  
Statistics & Tourism Information Department  
Fax: +855 23 885003  
E-mail: kong@mot.gov.kh

2. Mr. Horth Vanny

Chief of Tourism Statistics Office  
Compile and data analysis  
Tel.: +855 12 827664