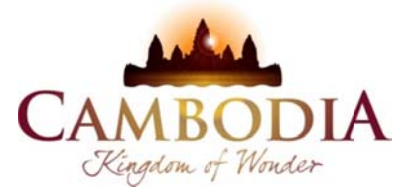




KINGDOM OF CAMBODIA
NATION RELIGION KING



TOURISM STATISTICS REPORT

December 2012

MINISTRY OF TOURISM

Statistics and Tourism Information Department

No. A3, Street 169, Sangkat Veal Vong, Khan 7 Makara, Phnom Penh, Cambodia.

Fax: +855 23 885003

E-mail: kong@mot.gov.kh

Web site: www.mot.gov.kh

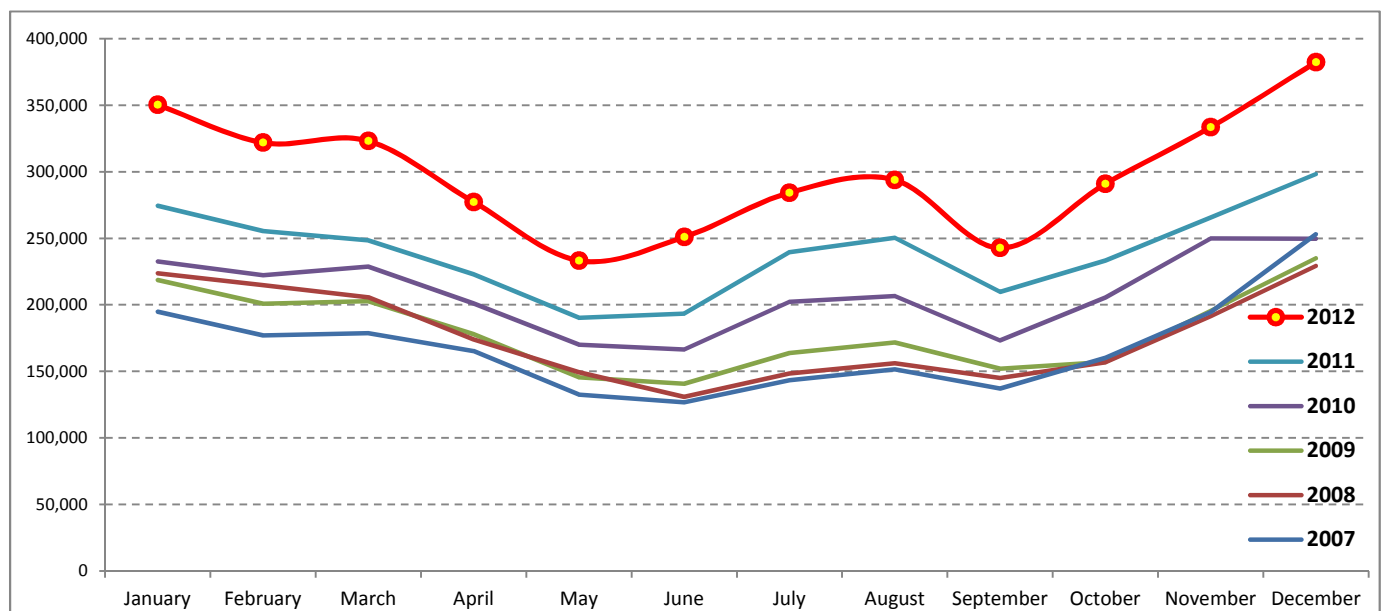
Tourism Highlights

International Tourist Arrivals, Average Length of Stay, Hotels Occupancy & Tourism Receipts 1993 - 2011

Years	Tourist Arrivals		Average Length	Hotels Occupancy	Tourism Receipts
	number	change (%)	of Stay (days)	(%)	(Million US\$)
1993	118,183	-	N/A	N/A	N/A
1994	176,617	49.4	N/A	N/A	N/A
1995	219,680	24.4	8.00	37.00	100
1996	260,489	18.6	7.50	40.00	118
1997	218,843	-16.0	6.40	30.00	103
1998	286,524	30.9	5.20	40.00	166
1999	367,743	28.3	5.50	44.00	190
2000	466,365	26.8	5.50	45.00	228
2001	604,919	29.7	5.50	48.00	304
2002	786,524	30.0	5.80	50.00	379
2003	701,014	-10.9	5.50	50.00	347
2004	1,055,202	50.5	6.30	52.00	578
2005	1,421,615	34.7	6.30	52.00	832
2006	1,700,041	19.6	6.50	54.79	1,049
2007	2,015,128	18.5	6.50	54.79	1,400
2008	2,125,465	5.5	6.65	62.68	1,595
2009	2,161,577	1.7	6.45	63.57	1,561
2010	2,508,289	16.0	6.45	65.74	1,786
2011	2,881,862	14.9	6.50	66.15	1,912

International tourist arrivals to Cambodia

Destination	Months	2007	2008	2009	2010	2011	2012	change (%) 2012*/11
Cambodia	Q1	550,813	644,205	622,288	683,692	778,467	995,210	27.8
<i>International tourist arrivals by all means of transportations</i>	January	194,932	223,581	218,691	232,590	274,471	350,257	27.6
	February	177,130	214,902	200,789	222,354	255,499	321,870	26.0
	March	178,751	205,722	202,808	228,748	248,497	323,083	30.0
	Q2	424,536	454,031	464,230	537,464	606,562	761,442	25.5
	April	165,347	173,903	177,955	200,965	223,032	277,304	24.3
	May	132,512	149,275	145,564	170,164	190,258	233,220	22.6
	June	126,677	130,853	140,711	166,335	193,272	250,918	29.8
	Q3	431,815	449,693	487,422	582,024	699,760	820,888	17.3
	July	143,310	148,449	163,817	202,349	239,527	284,282	18.7
	August	151,478	156,098	171,668	206,563	250,429	293,859	17.3
	September	137,027	145,146	151,937	173,112	209,804	242,747	15.7
	Q4	607,964	577,536	587,637	705,109	797,073	1,006,767	26.3
	October	160,235	156,718	157,105	205,515	233,190	290,959	24.8
	November	194,646	191,549	195,570	249,892	265,539	333,482	25.6
	December	253,083	229,269	234,962	249,702	298,344	382,326	28.1
	Total	2,015,128	2,125,465	2,161,577	2,508,289	2,881,862	3,584,307	24.4



Source: Statistics and Tourism Information Department, MOT

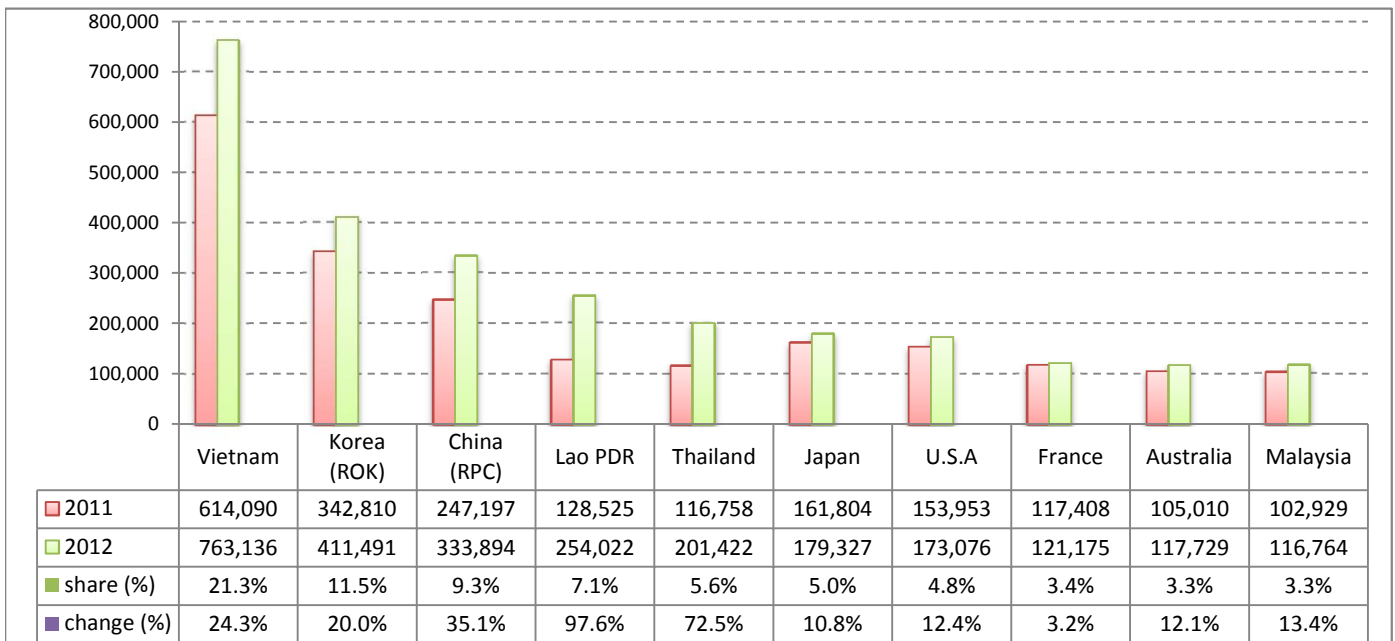
Executive Summary Report in 2012

I. International tourist arrivals to Cambodia in January - December was: **3,584,307**

II. Mode of arrivals

	visitors	share (%)
Air	1,722,083	48.0
Phnom Penh Int'l Airport	716,584	20.0
Siem Reap Int'l Airport	1,005,499	28.1
Land and Water ways	1,862,224	52.0
Land	1,785,726	49.8
Waterway	76,498	2.1
Total	3,584,307	100.0

III. Top ten markets arrivals in January - December 2012



IV. International tourist arrivals to Cambodia in January - December 2012

	Inbound tourism		share (%)		change (%)
	2011	2012	2011	2012	2012*/11
Air	1,480,407	1,722,083	51.4	48.0	16.3
Phnom Penh Int'l Airport	645,235	716,584	22.4	20.0	11.1
Siem Reap Int'l Airport	835,172	1,005,499	29.0	28.1	20.4
Land and Water ways	1,401,455	1,862,224	48.6	52.0	32.9
Land	1,320,311	1,785,726	45.8	49.8	35.3
Waterway	81,144	76,498	2.8	2.1	-5.7
Total	2,881,862	3,584,307	100.0	100.0	24.4

V. Remark: Percentage share of international tourist arrivals at destinations in January - December 2012

	Arrivals		share (%)		change (%)
	2011	2012	2011	2012	2012*/11
Phnom Penh & Other Destinations	1,271,786	1,520,971	44.1	42.4	19.6
Siem Reap Province	1,610,076	2,063,336	55.9	57.6	28.2
Total	2,881,862	3,584,307	100.0	100.0	24.4

VI. Outbound tourists departures in January - December 2012

	Outbound tourism		change (%)
	2011	2012	2012*/11
Cambodian outbound tourists	709,616	792,398	11.7
International outbound tourists	2,847,309	3,504,584	23.1

International Tourist Arrivals to Cambodia by Country of Residence in January - December 2012

(by all mean of transportations)

Regions Country of Residence	2011		2012			share		change	
			Purpose of Visit			Total	Female	(%)	(%)
			Holiday	Business	Other			2012*	2012*/11
GRAND TOTAL	2,881,862	3,287,092	167,715	129,500	3,584,307	1,625,691	100.0	24.4	
Asia and the Pacific	2,106,601	2,517,819	132,149	62,348	2,712,316	1,253,901	75.7	28.8	
ASEAN	1,101,111	1,446,705	33,953	33,609	1,514,267	709,844	42.2	37.5	
Brunei Darussalam	481	799	15	150	964	376	0.0	100.4	
Indonesia	15,817	19,249	2,696	599	22,544	7,343	0.6	42.5	
Lao PDR	128,525	253,241	109	672	254,022	170,273	7.1	97.6	
Malaysia	102,929	109,127	6,728	909	116,764	41,252	3.3	13.4	
Myanmar	4,199	3,809	603	332	4,744	1,953	0.1	13.0	
Philippines	70,718	90,226	6,238	1,023	97,487	57,831	2.7	37.9	
Singapore	47,594	50,649	2,166	369	53,184	19,345	1.5	11.7	
Thailand	116,758	183,824	8,556	9,042	201,422	91,973	5.6	72.5	
Vietnam	614,090	735,781	6,842	20,513	763,136	319,498	21.3	24.3	
Eastern Asia	855,697	929,457	86,025	10,670	1,026,152	474,590	28.6	19.9	
China (RPC)	247,197	281,669	49,165	3,060	333,894	153,034	9.3	35.1	
Hong Kong SAR	5,266	7,941	286	55	8,282	4,089	0.2	57.3	
Japan	161,804	167,410	9,077	2,840	179,327	78,427	5.0	10.8	
Korea (ROK)	342,810	392,373	15,938	3,180	411,491	199,808	11.5	20.0	
Mongolia	257	280	30	37	347	175	0.0	35.0	
Taiwan, China	98,363	79,784	11,529	1,498	92,811	39,057	2.6	-5.6	
Southern Asia	20,116	19,903	3,623	1,178	24,704	6,560	0.7	22.8	
Afghanistan	113	112	14	28	154	23	0.0	36.3	
Bangladesh	1,316	1,028	204	135	1,367	174	0.0	3.9	
Bhutan	81	98	7	29	134	27	0.0	65.4	
India	15,240	15,852	2,480	667	18,999	5,439	0.5	24.7	
Nepal	1,156	1,174	185	119	1,478	386	0.0	27.9	
Pakistan	1,113	683	405	80	1,168	234	0.0	4.9	
Sri Lanka	1,097	956	328	120	1,404	277	0.0	28.0	
Western Asia	1,945	2,200	199	21	2,420	1,327	0.1	24.4	
Kazakhstan	1,224	1,675	153	14	1,842	943	0.1	50.5	
Uzbekistan	721	525	46	7	578	384	0.0	-19.8	
Oceania	121,602	114,362	6,796	15,721	136,879	58,577	3.8	12.6	
Australia	105,010	98,414	5,752	13,563	117,729	50,956	3.3	12.1	
Fiji	117	79	14	13	106	35	0.0	-9.4	
New Zealand	16,475	15,869	1,030	2,145	19,044	7,586	0.5	15.6	
Other Asia & the Pacific	6,130	5,192	1,553	1,149	7,894	3,003	0.2	28.8	
Europe	542,863	560,584	22,614	28,161	611,359	261,624	17.1	12.6	
Northern Europe	151,600	150,825	6,855	2,767	160,447	61,554	4.5	5.8	
Denmark	9,352	9,521	305	187	10,013	4,010	0.3	7.1	
Finland	6,410	5,864	280	199	6,343	2,308	0.2	-1.0	
Iceland	355	541	26	11	578	212	0.0	62.8	
Ireland	8,541	8,377	359	129	8,865	3,574	0.2	3.8	
Norway	8,128	7,833	230	188	8,251	3,268	0.2	1.5	
Sweden	14,762	15,307	537	371	16,215	6,223	0.5	9.8	
United Kingdom	104,052	103,382	5,118	1,682	110,182	41,959	3.1	5.9	
Western Europe	242,011	225,573	10,924	23,002	259,499	107,542	7.2	7.2	
Austria	7,601	7,596	199	353	8,148	3,264	0.2	7.2	
Belgium	13,905	13,392	640	730	14,762	5,796	0.4	6.2	
France	117,408	96,017	6,677	18,481	121,175	51,263	3.4	3.2	
Germany	63,398	69,005	1,870	1,662	72,537	29,406	2.0	14.4	
Luxembourg	497	451	8	15	474	168	0.0	-4.6	
Monaco	82	51	2	2	55	27	0.0	-32.9	
Netherlands	22,725	22,949	815	795	24,559	9,777	0.7	8.1	
Switzerland	16,395	16,112	713	964	17,789	7,841	0.5	8.5	
Eastern Europe	91,593	124,800	1,763	608	127,171	65,689	3.5	38.8	
Bulgaria	470	668	18	10	696	365	0.0	48.1	
Czech Republic	3,310	3,948	76	40	4,064	1,705	0.1	22.8	
Estonia	954	975	27	20	1,022	439	0.0	7.1	
Hungary	2,585	2,436	42	59	2,537	1,088	0.1	-1.9	
Lithuania	1,238	1,051	27	11	1,089	540	0.0	-12.0	
Poland	9,151	9,860	69	65	9,994	4,871	0.3	9.2	
Romania	1,081	1,251	57	19	1,327	688	0.0	22.8	
Russian Federation	67,747	98,270	1,217	263	99,750	52,879	2.8	47.2	
Slovakia	1,269	1,538	109	46	1,693	652	0.0	33.4	
Ukraine	3,788	4,803	121	75	4,999	2,462	0.1	32.0	

International Tourist Arrivals to Cambodia by Country of Residence in January - December 2012

(by all mean of transportations)

Regions Country of Residence	2011		2012			Total	Female	share	change
	Purpose of Visit			2012*	2012*/11				
	Holiday	Business	Other			(%)	(%)		
GRAND TOTAL	2,881,862	3,287,092	167,715	129,500	3,584,307	1,625,691	100.0	24.4	
Southern Europe	52,308	55,346	1,449	776	57,571	24,148	1.6	10.1	
Croatia	532	665	18	22	705	323	0.0	32.5	
Greece	1,168	1,026	20	27	1,073	382	0.0	-8.1	
Italy	20,837	21,634	689	302	22,625	8,462	0.6	8.6	
Portugal	3,081	2,975	61	25	3,061	1,445	0.1	-0.6	
Serbia	408	373	24	14	411	178	0.0	0.7	
Slovenia	874	902	31	6	939	375	0.0	7.4	
Spain	22,123	24,676	375	298	25,349	11,938	0.7	14.6	
Turkey	3,285	3,095	231	82	3,408	1,045	0.1	3.7	
Other Europe	5,351	4,040	1,623	1,008	6,671	2,691	0.2	24.7	
Americas	217,500	193,987	11,859	38,445	244,291	104,515	6.8	12.3	
Argentina	5,223	4,365	36	99	4,500	2,119	0.1	-13.8	
Brazil	3,616	4,998	45	67	5,110	2,464	0.1	41.3	
Canada	42,462	40,619	2,109	5,101	47,829	20,787	1.3	12.6	
Chile	2,633	2,867	79	27	2,973	1,421	0.1	12.9	
Colombia	2,060	1,415	45	37	1,497	706	0.0	-27.3	
Costa Rica	201	225	9	11	245	124	0.0	21.9	
Ecuador	184	162	12	17	191	83	0.0	3.8	
Mexico	3,486	4,060	65	39	4,164	2,059	0.1	19.4	
Peru	483	535	23	18	576	249	0.0	19.3	
United States	153,953	131,895	8,827	32,354	173,076	72,826	4.8	12.4	
Uruguay	512	470	5	29	504	253	0.0	-1.6	
Other Americas	2,687	2,376	604	646	3,626	1,424	0.1	34.9	
Africa	5,993	4,671	654	301	5,626	2,092	0.2	-6.1	
Cameroon	388	192	8	25	225	47	0.0	-42.0	
Congo	157	50	5	11	66	15	0.0	-58.0	
Ghana	415	113	17	19	149	14	0.0	-64.1	
Kenya	283	201	24	41	266	112	0.0	-6.0	
Liberia	335	82	5	7	94	25	0.0	-71.9	
Nigeria	528	301	232	37	570	82	0.0	8.0	
Sudan	48	37	8	7	52	12	0.0	8.3	
South Africa	3,216	3,247	238	45	3,530	1,558	0.1	9.8	
Uganda	299	54	11	15	80	32	0.0	-73.2	
Other Africa	324	394	106	94	594	195	0.0	83.3	
Middle East	8,905	10,031	439	245	10,715	3,559	0.3	20.3	
Egypt	196	171	23	25	219	52	0.0	11.7	
Iran	696	605	13	28	646	147	0.0	-7.2	
Iraq	91	71	5	7	83	17	0.0	-8.8	
Israel	6,644	7,584	269	68	7,921	3,068	0.2	19.2	
Kuwait	530	696	5	11	712	41	0.0	34.3	
Oman	107	131	6	13	150	19	0.0	40.2	
Palestine	34	41	5	5	51	7	0.0	50.0	
Qatar	62	62	4	4	70	27	0.0	12.9	
Saudi Arabia	78	68	9	10	87	13	0.0	11.5	
United Arab Emirates	155	221	11	11	243	22	0.0	56.8	
Yemen	98	137	8	11	156	25	0.0	59.2	
Other Middle East	214	244	81	52	377	121	0.0	76.2	

Remark:

- Cambodian outbound tourist departures: 792,398
 - International outbound tourist departures: 3,504,584

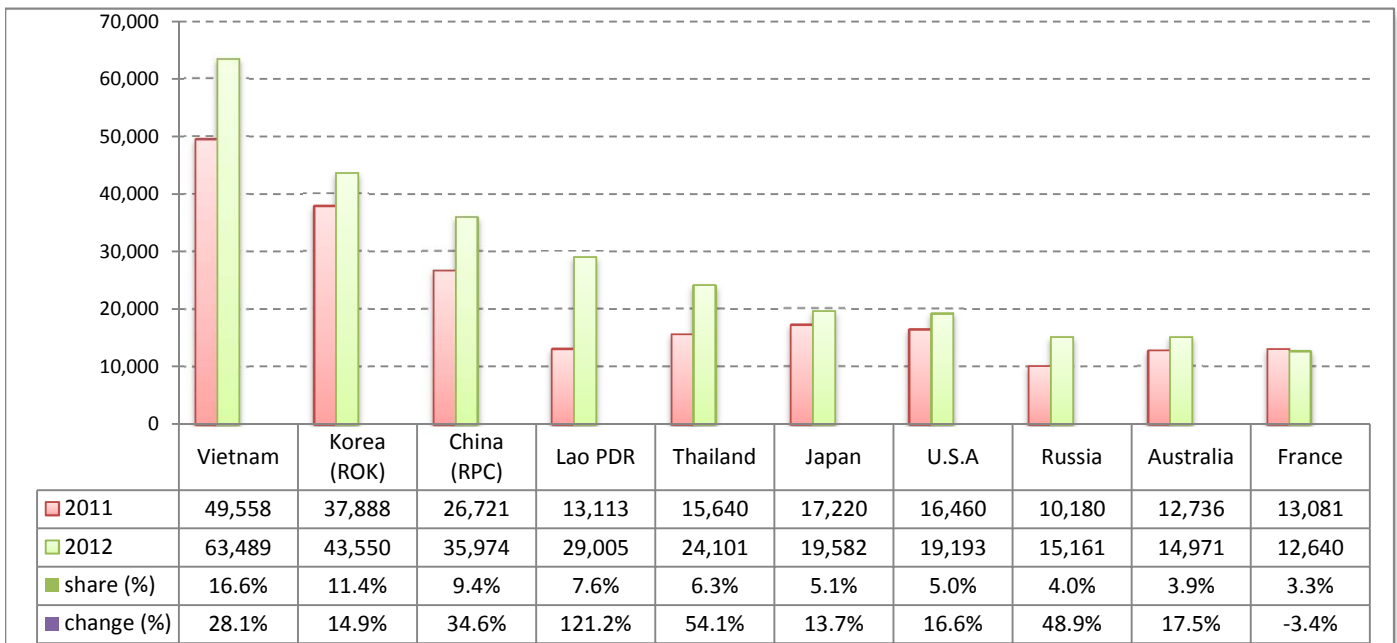
Executive Summary Report in December 2012

I. International tourist arrivals to Cambodia in December 2012 was: **382,326**

II. Mode of arrivals

	visitors	share (%)
Air	190,922	49.9
Phnom Penh Int'l Airport	75,177	19.7
Siem Reap Int'l Airport	115,745	30.3
Land and Water ways	191,404	50.1
Land	182,979	47.9
Waterway	8,425	2.2
Total	382,326	100.0

III. Top ten markets arrivals in December 2012



IV. International tourist arrivals to Cambodia in December 2012

	Inbound tourism		share (%)		change (%)
	2011	2012	2011	2012	2012*/11
Air	162,510	190,922	54.5	49.9	17.5
Phnom Penh Int'l Airport	62,776	75,177	21.0	19.7	19.8
Siem Reap Int'l Airport	99,734	115,745	33.4	30.3	16.1
Land and Water ways	135,834	191,404	45.5	50.1	40.9
Land	129,510	182,979	43.4	47.9	41.3
Waterway	6,324	8,425	2.1	2.2	33.2
Total	298,344	382,326	100.0	100.0	28.1

V. Remark: Percentage share of international tourist arrivals at destinations in December 2012

	Arrivals		share (%)		change (%)
	2011	2012	2011	2012	2012*/11
Phnom Penh & Other Destinations	126,478	155,884	42.4	40.8	23.2
Siem Reap Province	171,866	226,442	57.6	59.2	31.8
Total	298,344	382,326	100.0	100.0	28.1

VI. Outbound tourists departures in December 2012

	Outbound tourism		change (%)
	2011	2012	2012*/11
Cambodian outbound tourists	70,132	66,181	-5.6
International outbound tourists	288,990	374,130	29.5

International Tourist Arrivals to Cambodia by Country of Residence in December 2012

(by all mean of transportations)

Regions Country of Residence	2011	2012			Total	Female	share	change
		Purpose of Visit					(%)	(%)
		Holiday	Business	Other	2012*	2012*/11		
GRAND TOTAL	298,344	355,169	14,284	12,873	382,326	172,897	100.0	28.1
Asia and the Pacific	213,027	263,114	11,018	6,159	280,291	129,739	73.3	31.6
ASEAN (South-East Asia)	104,141	144,180	2,868	1,576	148,624	69,089	38.9	42.7
Brunei Darussalam	43	79	2	8	89	36	0.0	107.0
Indonesia	1,777	2,093	265	22	2,380	706	0.6	33.9
Lao PDR	13,113	28,940	8	57	29,005	18,871	7.6	121.2
Malaysia	10,000	11,836	583	103	12,522	4,721	3.3	25.2
Myanmar	476	592	41	53	686	324	0.2	44.1
Philippines	7,549	8,266	524	81	8,871	5,183	2.3	17.5
Singapore	5,985	7,235	211	35	7,481	3,232	2.0	25.0
Thailand	15,640	23,036	687	378	24,101	11,867	6.3	54.1
Vietnam	49,558	62,103	547	839	63,489	24,149	16.6	28.1
North-East Asia	90,416	101,853	6,990	1,010	109,853	51,825	28.7	21.5
China (RPC)	26,721	31,911	3,779	284	35,974	16,968	9.4	34.6
Hong Kong SAR	449	1,218	23	3	1,244	681	0.3	177.1
Japan	17,220	18,453	831	298	19,582	9,078	5.1	13.7
Korea (ROK)	37,888	41,957	1,280	313	43,550	21,014	11.4	14.9
Mongolia	31	27	2	3	32	12	0.0	3.2
Taiwan, China	8,107	8,287	1,075	109	9,471	4,072	2.5	16.8
Southern Asia	2,385	2,522	341	192	3,055	923	0.8	28.1
Afghanistan	2	20	1	3	24	5	0.0	1100.0
Bangladesh	152	180	17	9	206	34	0.1	35.5
Bhutan	2	8	1	2	11	4	0.0	450.0
India	1,896	2,017	227	121	2,365	767	0.6	24.7
Nepal	130	159	19	25	203	55	0.1	56.2
Pakistan	88	56	50	6	112	27	0.0	27.3
Srilanka	115	82	26	26	134	31	0.0	16.5
Western Asia	199	289	8	6	303	177	0.1	52.3
Kazakhstan	145	228	7	3	238	135	0.1	64.1
Uzbekistan	54	61	1	3	65	42	0.0	20.4
Oceania	15,180	13,586	699	3,239	17,524	7,430	4.6	15.4
Australia	12,736	11,726	602	2,643	14,971	6,389	3.9	17.5
Fiji	14	2	2	1	5	1	0.0	-64.3
New Zealand	2,430	1,858	95	595	2,548	1,040	0.7	4.9
Other Asia & the Pacific	706	684	112	136	932	295	0.2	32.0
Europe	60,764	67,889	2,095	3,137	73,121	30,797	19.1	20.3
Northern Europe	15,185	16,646	592	275	17,513	6,481	4.6	15.3
Denmark	804	970	25	22	1,017	385	0.3	26.5
Finland	782	921	24	28	973	332	0.3	24.4
Iceland	39	74	3	2	79	26	0.0	102.6
Ireland	775	756	27	10	793	271	0.2	2.3
Norway	757	858	30	18	906	356	0.2	19.7
Sweden	2,008	2,501	70	57	2,628	995	0.7	30.9
United Kingdom	10,020	10,566	413	138	11,117	4,116	2.9	10.9
Western Europe	27,316	26,702	1,072	2,477	30,251	12,111	7.9	10.7
Austria	949	879	19	26	924	355	0.2	-2.6
Belgium	1,472	1,598	52	69	1,719	685	0.4	16.8
France	13,081	10,228	639	1,773	12,640	5,188	3.3	-3.4
Germany	6,983	9,014	203	159	9,376	3,685	2.5	34.3
Luxembourg	55	61	1	3	65	20	0.0	18.2
Monaco	2	7	1	2	10	4	0.0	400.0
Netherlands	2,727	2,793	99	334	3,226	1,288	0.8	18.3
Switzerland	2,047	2,122	58	111	2,291	886	0.6	11.9
Central / Eastern Europe	12,759	18,470	188	112	18,770	9,556	4.9	47.1
Bulgaria	73	131	4	1	136	68	0.0	86.3
Czech Republic	373	432	6	13	451	167	0.1	20.9
Estonia	141	153	5	1	159	67	0.0	12.8
Hungary	248	284	6	15	305	128	0.1	23.0
Lithuania	124	126	5	2	133	58	0.0	7.3
Poland	952	1,337	6	8	1,351	661	0.4	41.9
Romania	151	202	4	6	212	103	0.1	40.4
Russian Federation	10,180	14,993	139	29	15,161	7,915	4.0	48.9
Slovakia	134	151	7	2	160	61	0.0	19.4
Ukraine	383	661	6	35	702	328	0.2	83.3

International Tourist Arrivals to Cambodia by Country of Residence in December 2012

(by all mean of transportations)

Regions Country of Residence	2011		2012			share		change
	Purpose of Visit			Total	Female	(%) 2012*	(%) 2012*/11	
	Holiday	Business	Other					
GRAND TOTAL	298,344	355,169	14,284	12,873	382,326	172,897	100.0	28.1
Southern Europe	4,920	5,508	141	94	5,743	2,341	1.5	16.7
Croatia	83	78	1	13	92	38	0.0	10.8
Greece	135	127	2	14	143	60	0.0	5.9
Italy	2,401	2,763	70	39	2,872	1,110	0.8	19.6
Portugal	255	407	7	1	415	192	0.1	62.7
Serbia	44	47	1	2	50	27	0.0	13.6
Slovenia	162	141	4	2	147	53	0.0	-9.3
Spain	1,563	1,543	34	19	1,596	730	0.4	2.1
Turkey	277	402	22	4	428	131	0.1	54.5
Other Europe	584	563	102	179	844	308	0.2	44.5
Americas	22,942	22,419	1,078	3,489	26,986	11,627	7.1	17.6
Argentina	299	278	3	6	287	107	0.1	-4.0
Brazil	380	645	2	13	660	291	0.2	73.7
Canada	4,404	4,380	205	601	5,186	2,215	1.4	17.8
Chile	448	254	9	6	269	125	0.1	-40.0
Colombia	102	140	10	2	152	60	0.0	49.0
Costa Rica	15	11	1	3	15	7	0.0	0.0
Ecuador	21	15	2	1	18	5	0.0	-14.3
Mexico	367	487	6	6	499	247	0.1	36.0
Peru	34	46	1	10	57	21	0.0	67.6
United States	16,460	15,742	751	2,700	19,193	8,324	5.0	16.6
Uruguay	6	26	2	3	31	9	0.0	416.7
Other Americas	406	395	86	138	619	216	0.2	52.5
Africa	720	751	51	44	846	324	0.2	17.5
Cameroon	18	8	3	4	15	6	0.0	-16.7
Congo	2	4	1	2	7	1	0.0	250.0
Ghana	19	3	1	6	10	1	0.0	-47.4
Kenya	32	37	1	6	44	21	0.0	37.5
Liberia	7	2	1	1	4	1	0.0	-42.9
Nigeria	56	27	10	3	40	5	0.0	-28.6
Sudan	3	5	1	2	8	2	0.0	166.7
South Africa	546	634	28	6	668	270	0.2	22.3
Uganda	10	3	1	3	7	2	0.0	-30.0
Other Africa	27	28	4	11	43	15	0.0	59.3
Middle East	891	996	42	44	1,082	410	0.3	21.4
Egypt	26	19	3	5	27	10	0.0	3.8
Iran	58	55	2	5	62	11	0.0	6.9
Iraq	4	2	0	1	3	1	0.0	-25.0
Israel	712	808	23	12	843	361	0.2	18.4
Kuwait	31	46	1	2	49	6	0.0	58.1
Oman	6	8	1	2	11	1	0.0	83.3
Palestine	4	4	1	2	7	1	0.0	75.0
Qatar	1	2	1	1	4	1	0.0	300.0
Saudi Arabia	11	8	1	3	12	3	0.0	9.1
United Arab Emirates	6	15	1	3	19	2	0.0	216.7
Yemen	15	5	2	1	8	1	0.0	-46.7
Other Middle East	17	24	6	7	37	12	0.0	117.6

Remark:

- Cambodian outbound tourist departures: 66,181
- International outbound tourist departures: 374,130

COMPILED BY:

1. Mr. Kong Sopheareak

Director
Statistics & Tourism Information Department
Fax: +855 23 885003
E-mail: kong@mot.gov.kh

2. Mr. Horth Vanny

Chief of Tourism Statistics Office
Compile and data analysis
Tel.: +855 12 827664