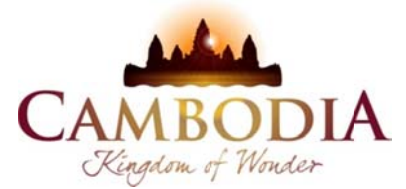




KINGDOM OF CAMBODIA  
NATION RELIGION KING



# TOURISM STATISTICS REPORT

# February 2013

**MINISTRY OF TOURISM**

Statistics and Tourism Information Department

No. A3, Street 169, Sangkat Veal Vong, Khan 7 Makara, Phnom Penh, Cambodia.

Fax: +855 23 885003

E-mail: [kong@mot.gov.kh](mailto:kong@mot.gov.kh)

Web site: [www.mot.gov.kh](http://www.mot.gov.kh)

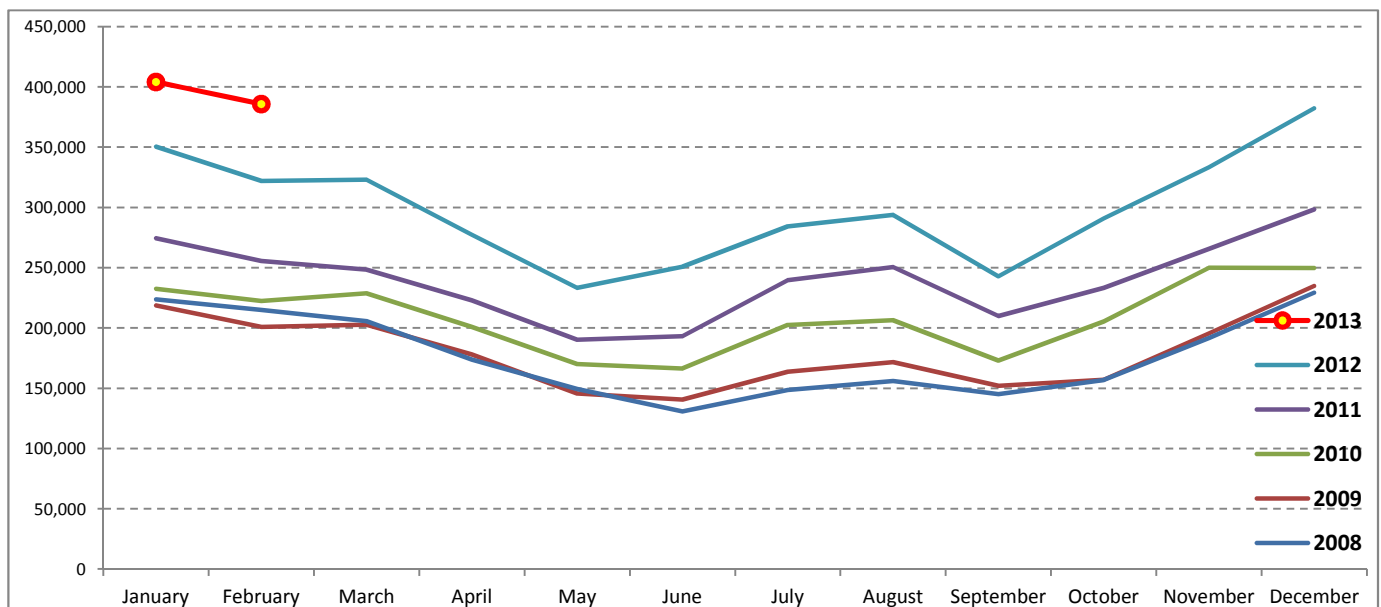
## Tourism Highlights

### International Tourist Arrivals, Average Length of Stay, Hotels Occupancy & Tourism Receipts 1993 - 2012

Years	Tourist Arrivals		Average Length	Hotels Occupancy	Tourism Receipts
	number	change (%)	of Stay (days)	(%)	(Million US\$)
1993	118,183	-	N/A	N/A	N/A
1994	176,617	49.4	N/A	N/A	N/A
1995	219,680	24.4	8.00	37.00	100
1996	260,489	18.6	7.50	40.00	118
1997	218,843	-16.0	6.40	30.00	103
1998	286,524	30.9	5.20	40.00	166
1999	367,743	28.3	5.50	44.00	190
2000	466,365	26.8	5.50	45.00	228
2001	604,919	29.7	5.50	48.00	304
2002	786,524	30.0	5.80	50.00	379
2003	701,014	-10.9	5.50	50.00	347
2004	1,055,202	50.5	6.30	52.00	578
2005	1,421,615	34.7	6.30	52.00	832
2006	1,700,041	19.6	6.50	54.79	1,049
2007	2,015,128	18.5	6.50	54.79	1,400
2008	2,125,465	5.5	6.65	62.68	1,595
2009	2,161,577	1.7	6.45	63.57	1,561
2010	2,508,289	16.0	6.45	65.74	1,786
2011	2,881,862	14.9	6.50	66.15	1,912
2012	3,584,307	24.4	6.30	68.49	2,210

### International tourist arrivals to Cambodia

Destination	Months	2008	2009	2010	2011	2012	2013	change (%) 2013*/12
<b>Cambodia</b>	<b>Q1</b>	<b>644,205</b>	<b>622,288</b>	<b>683,692</b>	<b>778,467</b>	<b>995,210</b>	<b>789,866</b>	
<i>International tourist arrivals by all means of transportations</i>	January	223,581	218,691	232,590	274,471	350,257	404,106	15.4
	February	214,902	200,789	222,354	255,499	321,870	385,760	19.8
	March	205,722	202,808	228,748	248,497	323,083		
	<b>Q2</b>	<b>454,031</b>	<b>464,230</b>	<b>537,464</b>	<b>606,562</b>	<b>761,442</b>	<b>0</b>	
	April	173,903	177,955	200,965	223,032	277,304		
	May	149,275	145,564	170,164	190,258	233,220		
	June	130,853	140,711	166,335	193,272	250,918		
	<b>Q3</b>	<b>449,693</b>	<b>487,422</b>	<b>582,024</b>	<b>699,760</b>	<b>820,888</b>	<b>0</b>	
	July	148,449	163,817	202,349	239,527	284,282		
	August	156,098	171,668	206,563	250,429	293,859		
	September	145,146	151,937	173,112	209,804	242,747		
	<b>Q4</b>	<b>577,536</b>	<b>587,637</b>	<b>705,109</b>	<b>797,073</b>	<b>1,006,767</b>	<b>0</b>	
October	156,718	157,105	205,515	233,190	290,959			
November	191,549	195,570	249,892	265,539	333,482			
December	229,269	234,962	249,702	298,344	382,326			
<b>Total</b>		<b>2,125,465</b>	<b>2,161,577</b>	<b>2,508,289</b>	<b>2,881,862</b>	<b>3,584,307</b>	<b>789,866</b>	<b>17.5</b>



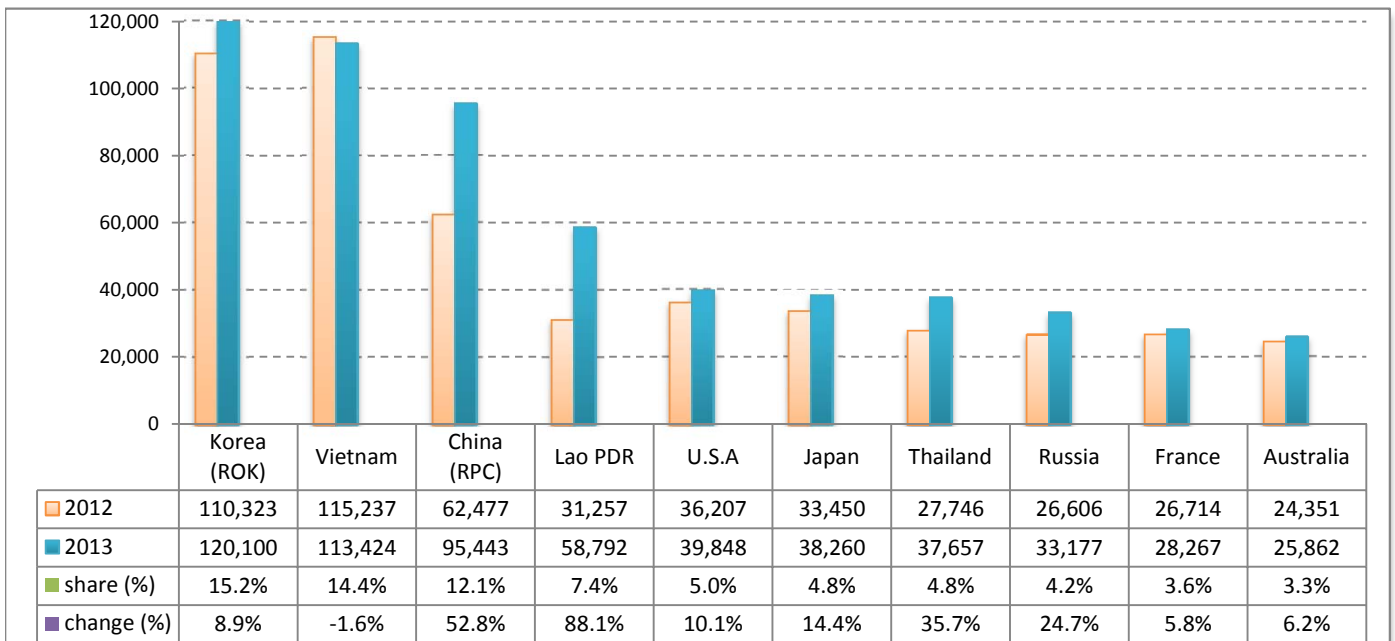
## Executive Summary Report in the First Two Months 2013

I. International tourist arrivals to Cambodia in January-February 2013 was: **789,866**

### II. Mode of arrivals

	arrivals	share (%)
<b>Air</b>	<b>418,663</b>	<b>53.0</b>
Phnom Penh Int'l Airport	141,537	17.9
Siem Reap Int'l Airport	277,126	35.1
<b>Land and Water ways</b>	<b>371,203</b>	<b>47.0</b>
Land	353,309	44.7
Waterway	17,894	2.3
<b>Total</b>	<b>789,866</b>	<b>100.0</b>

### III. Top ten markets arrivals in January - February 2013



### IV. International tourist arrivals to Cambodia in January - February 2013

	Inbound tourism		share (%)		change (%)
	2012	2013	2012	2013	2013*/12
<b>Air</b>	<b>353,647</b>	<b>418,663</b>	<b>52.6</b>	<b>53.0</b>	<b>18.4</b>
Phnom Penh Int'l Airport	125,078	141,537	18.6	17.9	13.2
Siem Reap Int'l Airport	228,569	277,126	34.0	35.1	21.2
<b>Land and Water ways</b>	<b>318,480</b>	<b>371,203</b>	<b>47.4</b>	<b>47.0</b>	<b>16.6</b>
Land	295,680	353,309	44.0	44.7	19.5
Waterway	22,800	17,894	3.4	2.3	-21.5
<b>Total</b>	<b>672,127</b>	<b>789,866</b>	<b>100.0</b>	<b>100.0</b>	<b>17.5</b>

### V. Remark: Percentage share of international tourist arrivals at destinations in January - February 2013

	Arrivals		share (%)		change (%)
	2012	2013	2012	2013	2013*/12
Phnom Penh & Other Destinations	230,850	309,883	34.3	39.2	34.2
Siem Reap Province	441,277	479,983	65.7	60.8	8.8
<b>Total</b>	<b>672,127</b>	<b>789,866</b>	<b>100.0</b>	<b>100.0</b>	<b>17.5</b>

### VI. Outbound tourists departures in January - February 2013

	Outbound tourism		change (%)
	2012	2013	2013*/12
Cambodian outbound tourists	130,583	136,979	4.9
International outbound tourists	667,981	799,611	19.7

## International Tourist Arrivals to Cambodia by Country of Residence in January - February 2013

(by all mean of transportations)

Regions Country of Residence	2012	2013			Total	Female	share	change
		Purpose of Visit					(%)	(%)
	Holiday	Business	Other	2013*	2013*/12			
<b>GRAND TOTAL</b>	<b>672,127</b>	<b>754,567</b>	<b>29,968</b>	<b>5,331</b>	<b>789,866</b>	<b>377,337</b>	<b>100.0</b>	<b>17.5</b>
<b>Asia and the Pacific</b>	<b>472,073</b>	<b>537,853</b>	<b>23,726</b>	<b>2,822</b>	<b>564,401</b>	<b>279,096</b>	<b>71.5</b>	<b>19.6</b>
<b>ASEAN (South-East Asia)</b>	<b>215,351</b>	<b>248,551</b>	<b>6,391</b>	<b>1,328</b>	<b>256,270</b>	<b>128,428</b>	<b>32.4</b>	<b>19.0</b>
Brunei Darussalam	108	80	1	10	91	35	0.0	-15.7
Indonesia	2,891	3,364	610	36	4,010	1,322	0.5	38.7
Lao PDR	31,257	58,715	27	50	58,792	37,546	7.4	88.1
Malaysia	16,448	16,289	1,313	37	17,639	6,036	2.2	7.2
Myanmar	774	573	88	28	689	307	0.1	-11.0
Philippines	14,608	15,443	1,051	130	16,624	9,924	2.1	13.8
Singapore	6,282	6,898	414	32	7,344	2,488	0.9	16.9
Thailand	27,746	35,485	1,560	612	37,657	16,466	4.8	35.7
Vietnam	115,237	111,704	1,327	393	113,424	54,304	14.4	-1.6
<b>North-East Asia</b>	<b>224,270</b>	<b>256,088</b>	<b>15,508</b>	<b>996</b>	<b>272,592</b>	<b>135,418</b>	<b>34.5</b>	<b>21.5</b>
China (RPC)	62,477	85,944	9,223	276	95,443	48,374	12.1	52.8
Hong Kong SAR	1,001	1,114	32	0	1,146	550	0.1	14.5
Japan	33,450	36,146	1,745	369	38,260	16,996	4.8	14.4
Korea (ROK)	110,323	117,217	2,540	343	120,100	61,626	15.2	8.9
Mongolia	79	82	5	0	87	35	0.0	10.1
Taiwan, China	16,940	15,585	1,963	8	17,556	7,837	2.2	3.6
<b>Southern Asia</b>	<b>3,572</b>	<b>3,679</b>	<b>619</b>	<b>153</b>	<b>4,451</b>	<b>1,215</b>	<b>0.6</b>	<b>24.6</b>
Afghanistan	37	33	0	4	37	8	0.0	0.0
Bangladesh	205	209	43	11	263	41	0.0	28.3
Bhutan	29	16	2	3	21	4	0.0	-27.6
India	2,779	3,031	437	81	3,549	1,022	0.4	27.7
Nepal	172	172	28	21	221	59	0.0	28.5
Pakistan	175	79	51	22	152	29	0.0	-13.1
Srilanka	175	139	58	11	208	52	0.0	18.9
<b>Western Asia</b>	<b>612</b>	<b>894</b>	<b>48</b>	<b>0</b>	<b>942</b>	<b>501</b>	<b>0.1</b>	<b>53.9</b>
Kazakhstan	513	798	45	0	843	441	0.1	64.3
Uzbekistan	99	96	3	0	99	60	0.0	0.0
<b>Oceania</b>	<b>27,696</b>	<b>27,775</b>	<b>1,110</b>	<b>305</b>	<b>29,190</b>	<b>13,128</b>	<b>3.7</b>	<b>5.4</b>
Australia	24,351	24,639	954	269	25,862	11,707	3.3	6.2
Fiji	20	13	2	2	17	5	0.0	-15.0
New Zealand	3,325	3,123	154	34	3,311	1,416	0.4	-0.4
Other Asia & the Pacific	572	866	50	40	956	406	0.1	67.1
<b>Europe</b>	<b>142,854</b>	<b>157,088</b>	<b>3,960</b>	<b>1,392</b>	<b>162,440</b>	<b>70,139</b>	<b>20.6</b>	<b>13.7</b>
<b>Northern Europe</b>	<b>38,622</b>	<b>39,289</b>	<b>1,243</b>	<b>308</b>	<b>40,840</b>	<b>15,868</b>	<b>5.2</b>	<b>5.7</b>
Denmark	2,598	2,830	68	16	2,914	1,185	0.4	12.2
Finland	1,888	2,166	50	15	2,231	798	0.3	18.2
Iceland	88	125	9	4	138	47	0.0	56.8
Ireland	1,648	1,794	56	17	1,867	710	0.2	13.3
Norway	2,362	2,459	45	23	2,527	1,072	0.3	7.0
Sweden	5,315	5,596	127	49	5,772	2,234	0.7	8.6
United Kingdom	24,723	24,319	888	184	25,391	9,822	3.2	2.7
<b>Western Europe</b>	<b>59,670</b>	<b>63,502</b>	<b>2,011</b>	<b>847</b>	<b>66,360</b>	<b>27,691</b>	<b>8.4</b>	<b>11.2</b>
Austria	2,489	2,793	56	29	2,878	1,169	0.4	15.6
Belgium	2,787	2,978	112	28	3,118	1,190	0.4	11.9
France	26,714	26,537	1,198	532	28,267	12,287	3.6	5.8
Germany	17,117	20,070	374	164	20,608	8,304	2.6	20.4
Luxembourg	100	103	1	2	106	38	0.0	6.0
Monaco	8	12	0	0	12	4	0.0	50.0
Netherlands	5,527	5,754	157	53	5,964	2,498	0.8	7.9
Switzerland	4,928	5,255	113	39	5,407	2,201	0.7	9.7
<b>Central / Eastern Europe</b>	<b>33,951</b>	<b>42,633</b>	<b>380</b>	<b>96</b>	<b>43,109</b>	<b>21,790</b>	<b>5.5</b>	<b>27.0</b>
Bulgaria	166	197	3	2	202	95	0.0	21.7
Czech Republic	1,232	1,405	8	15	1,428	600	0.2	15.9
Estonia	294	410	13	6	429	174	0.1	45.9
Hungary	861	1,032	10	5	1,047	466	0.1	21.6
Lithuania	297	501	5	0	506	236	0.1	70.4
Poland	2,502	3,490	16	8	3,514	1,759	0.4	40.4
Romania	278	356	11	0	367	187	0.0	32.0
Russian Federation	26,606	32,865	265	47	33,177	17,077	4.2	24.7
Slovakia	371	527	31	9	567	238	0.1	52.8
Ukraine	1,344	1,850	18	4	1,872	958	0.2	39.3

## International Tourist Arrivals to Cambodia by Country of Residence in January - February 2013

(by all mean of transportations)

Regions Country of Residence	2012		2013			share		change
	Purpose of Visit			Total	Female	(%) 2013*	(%) 2013*/12	
	Holiday	Business	Other					
<b>GRAND TOTAL</b>	<b>672,127</b>	<b>754,567</b>	<b>29,968</b>	<b>5,331</b>	<b>789,866</b>	<b>377,337</b>	<b>100.0</b>	<b>17.5</b>
<b>Southern Europe</b>	<b>10,206</b>	<b>10,865</b>	<b>292</b>	<b>115</b>	<b>11,272</b>	<b>4,468</b>	<b>1.4</b>	<b>10.4</b>
Croatia	170	213	2	2	217	114	0.0	27.6
Greece	217	191	6	0	197	52	0.0	-9.2
Italy	5,628	5,648	112	54	5,814	2,159	0.7	3.3
Portugal	431	606	18	6	630	323	0.1	46.2
Serbia	100	160	5	5	170	92	0.0	70.0
Slovenia	272	391	27	6	424	177	0.1	55.9
Spain	2,736	2,681	57	30	2,768	1,181	0.4	1.2
Turkey	652	975	65	12	1,052	370	0.1	61.3
Other Europe	405	799	34	26	859	322	0.1	112.1
<b>Americas</b>	<b>53,498</b>	<b>55,954</b>	<b>2,121</b>	<b>1,042</b>	<b>59,117</b>	<b>26,605</b>	<b>7.5</b>	<b>10.5</b>
Argentina	1,516	1,912	6	9	1,927	990	0.2	27.1
Brazil	1,364	1,740	12	9	1,761	868	0.2	29.1
Canada	12,326	12,426	417	93	12,936	5,722	1.6	4.9
Chile	849	1,098	24	4	1,126	607	0.1	32.6
Colombia	190	288	11	5	304	145	0.0	60.0
Costa Rica	81	74	3	1	78	37	0.0	-3.7
Ecuador	21	52	4	3	59	29	0.0	181.0
Mexico	538	531	14	2	547	254	0.1	1.7
Peru	94	61	5	1	67	37	0.0	-28.7
United States	36,207	37,360	1,597	891	39,848	17,706	5.0	10.1
Uruguay	43	67	3	3	73	36	0.0	69.8
Other Americas	269	345	25	21	391	174	0.0	45.4
<b>Africa</b>	<b>954</b>	<b>960</b>	<b>116</b>	<b>54</b>	<b>1,130</b>	<b>494</b>	<b>0.1</b>	<b>18.4</b>
Cameroon	50	21	2	8	31	7	0.0	-38.0
Congo	18	5	1	2	8	2	0.0	-55.6
Ghana	32	33	4	3	40	12	0.0	25.0
Kenya	52	33	4	6	43	30	0.0	-17.3
Liberia	21	5	0	1	6	1	0.0	-71.4
Nigeria	117	50	58	1	109	10	0.0	-6.8
Sudan	8	10	0	1	11	1	0.0	37.5
South Africa	591	715	40	21	776	380	0.1	31.3
Uganda	12	5	1	6	12	5	0.0	0.0
Other Africa	53	83	6	5	94	46	0.0	77.4
<b>Middle East</b>	<b>2,748</b>	<b>2,712</b>	<b>45</b>	<b>21</b>	<b>2,778</b>	<b>1,003</b>	<b>0.4</b>	<b>1.1</b>
Egypt	37	30	9	2	41	6	0.0	10.8
Iran	110	124	5	0	129	46	0.0	17.3
Iraq	15	14	0	0	14	2	0.0	-6.7
Israel	2,334	2,162	29	5	2,196	901	0.3	-5.9
Kuwait	134	225	0	7	232	7	0.0	73.1
Oman	18	26	0	0	26	1	0.0	44.4
Palestine	2	10	0	0	10	3	0.0	400.0
Qatar	3	14	0	0	14	0	0.0	366.7
Saudi Arabia	20	30	0	1	31	8	0.0	55.0
United Arab Emirates	22	14	0	0	14	1	0.0	-36.4
Yemen	13	13	0	2	15	0	0.0	15.4
Other Middle East	40	50	2	4	56	28	0.0	40.0

### Remark:

- Cambodian outbound tourist departures: 136,979
- International outbound tourist departures: 799,611

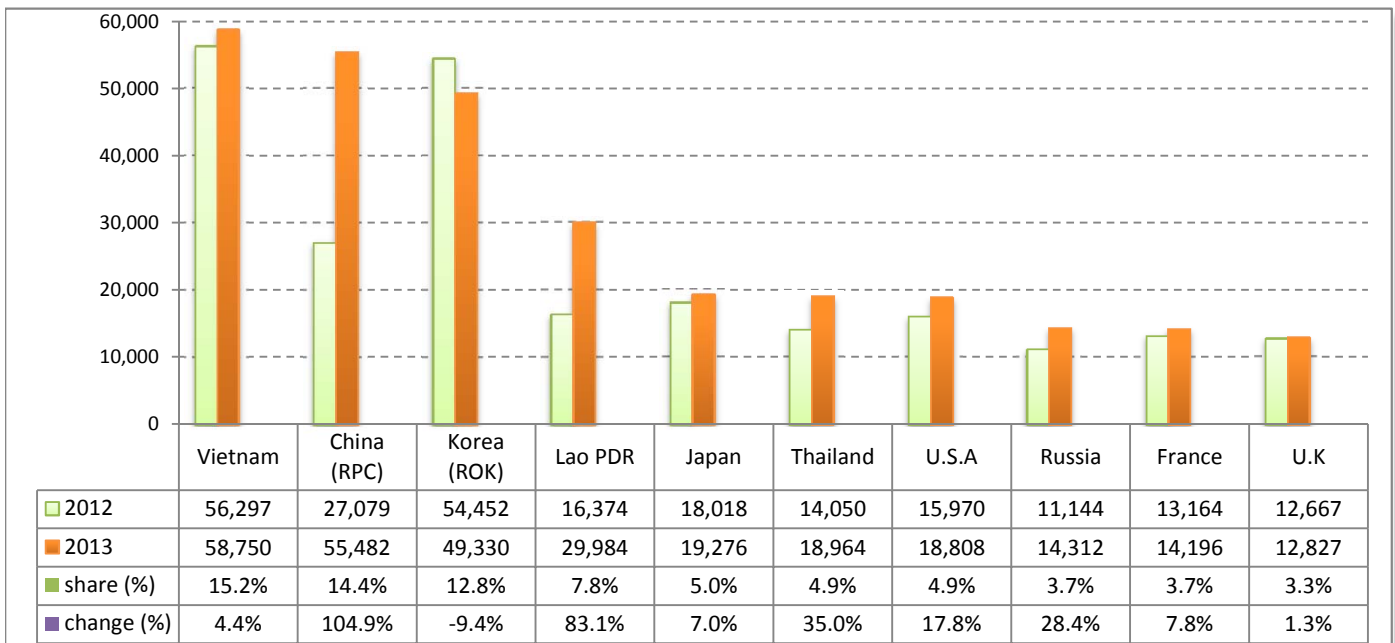
## Executive Summary Report in February 2013

I. International tourist arrivals to Cambodia in February 2013 was: **385,760**

### II. Mode of arrivals

	arrivals	share (%)
<b>Air</b>	<b>203,453</b>	<b>52.7</b>
Phnom Penh Int'l Airport	68,988	17.9
Siem Reap Int'l Airport	134,465	34.9
<b>Land and Water ways</b>	<b>182,307</b>	<b>47.3</b>
Land	174,036	45.1
Waterway	8,271	2.1
<b>Total</b>	<b>385,760</b>	<b>100.0</b>

### III. Top ten markets arrivals in February 2013



### IV. International tourist arrivals to Cambodia in February 2013

	Inbound tourism		share (%)		change (%)
	2012	2013	2012	2013	2013*/12
<b>Air</b>	<b>168,148</b>	<b>203,453</b>	<b>52.2</b>	<b>52.7</b>	<b>21.0</b>
Phnom Penh Int'l Airport	59,122	68,988	18.4	17.9	16.7
Siem Reap Int'l Airport	109,026	134,465	33.9	34.9	23.3
<b>Land and Water ways</b>	<b>153,722</b>	<b>182,307</b>	<b>47.8</b>	<b>47.3</b>	<b>18.6</b>
Land	142,295	174,036	44.2	45.1	22.3
Waterway	11,427	8,271	3.6	2.1	-27.6
<b>Total</b>	<b>321,870</b>	<b>385,760</b>	<b>100.0</b>	<b>100.0</b>	<b>19.8</b>

### V. Remark: Percentage share of international tourist arrivals at destinations in February 2013

	Arrivals		share (%)		change (%)
	2012	2013	2012	2013	2013*/12
Phnom Penh & Other Destinations	104,738	154,391	32.5	40.0	47.4
Siem Reap Province	217,132	231,369	67.5	60.0	6.6
<b>Total</b>	<b>321,870</b>	<b>385,760</b>	<b>100.0</b>	<b>100.0</b>	<b>19.8</b>

### VI. Outbound tourists departures in February 2013

	Outbound tourism		change (%)
	2012	2013	2013*/12
Cambodian outbound tourists	59,042	65,259	10.5
International outbound tourists	311,097	386,508	24.2

## International Tourist Arrivals to Cambodia by Country of Residence in February 2013

(by all mean of transportations)

Regions Country of Residence	2012		2013			share		change	
			Purpose of Visit			Total	Female	(%)	(%)
			Holiday	Business	Other			2013*	2013*/12
<b>GRAND TOTAL</b>	<b>321,870</b>	<b>368,461</b>	<b>15,002</b>	<b>2,297</b>	<b>385,760</b>	<b>184,276</b>	<b>100.0</b>	<b>19.8</b>	
<b>Asia and the Pacific</b>	<b>227,874</b>	<b>264,440</b>	<b>12,279</b>	<b>1,302</b>	<b>278,021</b>	<b>136,896</b>	<b>72.1</b>	<b>22.0</b>	
<b>ASEAN (South-East Asia)</b>	<b>106,883</b>	<b>126,467</b>	<b>3,197</b>	<b>604</b>	<b>130,268</b>	<b>65,799</b>	<b>33.8</b>	<b>21.9</b>	
Brunei Darussalam	47	54	0	0	54	24	0.0	14.9	
Indonesia	1,457	1,442	296	10	1,748	527	0.5	20.0	
Lao PDR	16,374	29,938	10	36	29,984	19,100	7.8	83.1	
Malaysia	7,933	7,517	821	20	8,358	2,998	2.2	5.4	
Myanmar	372	304	43	13	360	171	0.1	-3.2	
Philippines	7,040	8,139	388	35	8,562	5,031	2.2	21.6	
Singapore	3,313	3,216	250	22	3,488	1,274	0.9	5.3	
Thailand	14,050	18,056	635	273	18,964	8,569	4.9	35.0	
Vietnam	56,297	57,801	754	195	58,750	28,105	15.2	4.4	
<b>North-East Asia</b>	<b>108,348</b>	<b>124,783</b>	<b>8,359</b>	<b>492</b>	<b>133,634</b>	<b>65,205</b>	<b>34.6</b>	<b>23.3</b>	
China (RPC)	27,079	49,936	5,383	163	55,482	28,302	14.4	104.9	
Hong Kong SAR	372	537	12	0	549	253	0.1	47.6	
Japan	18,018	18,344	789	143	19,276	8,066	5.0	7.0	
Korea (ROK)	54,452	48,005	1,145	180	49,330	24,524	12.8	-9.4	
Mongolia	37	40	5	0	45	18	0.0	21.6	
Taiwan, China	8,390	7,921	1,025	6	8,952	4,042	2.3	6.7	
<b>Southern Asia</b>	<b>1,700</b>	<b>1,850</b>	<b>247</b>	<b>63</b>	<b>2,160</b>	<b>592</b>	<b>0.6</b>	<b>27.1</b>	
Afghanistan	16	15	0	2	17	3	0.0	6.3	
Bangladesh	102	122	8	5	135	15	0.0	32.4	
Bhutan	18	7	1	3	11	2	0.0	-38.9	
India	1,308	1,525	175	30	1,730	512	0.4	32.3	
Nepal	96	66	10	13	89	15	0.0	-7.3	
Pakistan	85	38	18	3	59	14	0.0	-30.6	
Sri Lanka	75	77	35	7	119	31	0.0	58.7	
<b>Western Asia</b>	<b>248</b>	<b>438</b>	<b>18</b>	<b>0</b>	<b>456</b>	<b>256</b>	<b>0.1</b>	<b>83.9</b>	
Kazakhstan	217	388	18	0	406	223	0.1	87.1	
Uzbekistan	31	50	0	0	50	33	0.0	61.3	
<b>Oceania</b>	<b>10,377</b>	<b>10,291</b>	<b>438</b>	<b>125</b>	<b>10,854</b>	<b>4,733</b>	<b>2.8</b>	<b>4.6</b>	
Australia	9,261	9,248	375	117	9,740	4,311	2.5	5.2	
Fiji	11	5	2	1	8	2	0.0	-27.3	
New Zealand	1,105	1,038	61	7	1,106	420	0.3	0.1	
Other Asia & the Pacific	318	611	20	18	649	311	0.2	104.1	
<b>Europe</b>	<b>67,861</b>	<b>75,328</b>	<b>1,725</b>	<b>557</b>	<b>77,610</b>	<b>33,882</b>	<b>20.1</b>	<b>14.4</b>	
<b>Northern Europe</b>	<b>19,097</b>	<b>19,446</b>	<b>551</b>	<b>111</b>	<b>20,108</b>	<b>8,092</b>	<b>5.2</b>	<b>5.3</b>	
Denmark	1,176	1,476	39	4	1,519	614	0.4	29.2	
Finland	830	967	15	7	989	325	0.3	19.2	
Iceland	36	44	5	1	50	17	0.0	38.9	
Ireland	797	863	22	9	894	354	0.2	12.2	
Norway	1,158	1,208	24	13	1,245	546	0.3	7.5	
Sweden	2,433	2,500	62	22	2,584	1,054	0.7	6.2	
United Kingdom	12,667	12,388	384	55	12,827	5,182	3.3	1.3	
<b>Western Europe</b>	<b>29,072</b>	<b>31,360</b>	<b>876</b>	<b>349</b>	<b>32,585</b>	<b>13,719</b>	<b>8.4</b>	<b>12.1</b>	
Austria	1,287	1,302	28	8	1,338	566	0.3	4.0	
Belgium	1,316	1,519	45	9	1,573	598	0.4	19.5	
France	13,164	13,458	520	218	14,196	6,203	3.7	7.8	
Germany	8,764	10,027	165	70	10,262	4,213	2.7	17.1	
Luxembourg	48	65	0	2	67	21	0.0	39.6	
Monaco	2	4	0	0	4	1	0.0	100.0	
Netherlands	2,347	2,651	67	22	2,740	1,140	0.7	16.7	
Switzerland	2,144	2,334	51	20	2,405	977	0.6	12.2	
<b>Central / Eastern Europe</b>	<b>14,745</b>	<b>18,965</b>	<b>155</b>	<b>37</b>	<b>19,157</b>	<b>9,701</b>	<b>5.0</b>	<b>29.9</b>	
Bulgaria	81	74	3	1	78	39	0.0	-3.7	
Czech Republic	622	739	7	9	755	325	0.2	21.4	
Estonia	170	190	8	6	204	83	0.1	20.0	
Hungary	431	531	6	2	539	229	0.1	25.1	
Lithuania	136	270	1		271	125	0.1	99.3	
Poland	1,242	1,802	8	4	1,814	903	0.5	46.1	
Romania	88	190	4	0	194	90	0.1	120.5	
Russian Federation	11,144	14,198	105	9	14,312	7,406	3.7	28.4	
Slovakia	177	266	6	3	275	119	0.1	55.4	
Ukraine	654	705	7	3	715	382	0.2	9.3	

## International Tourist Arrivals to Cambodia by Country of Residence in February 2013

(by all mean of transportations)

Regions Country of Residence	2012		2013			Total	Female	share	change
	Purpose of Visit			2013*	2013*/12				
	Holiday	Business	Other			(%)	(%)		
<b>GRAND TOTAL</b>	<b>321,870</b>	<b>368,461</b>	<b>15,002</b>	<b>2,297</b>	<b>385,760</b>	<b>184,276</b>	<b>100.0</b>	<b>19.8</b>	
<b>Southern Europe</b>	<b>4,784</b>	<b>4,994</b>	<b>127</b>	<b>47</b>	<b>5,168</b>	<b>2,132</b>	<b>1.3</b>	<b>8.0</b>	
Croatia	61	86	0	1	87	52	0.0	42.6	
Greece	96	85	2		87	19	0.0	-9.4	
Italy	2,630	2,591	42	24	2,657	1,030	0.7	1.0	
Portugal	171	299	7	2	308	164	0.1	80.1	
Serbia	29	66	2	3	71	36	0.0	144.8	
Slovenia	142	130	2	0	132	58	0.0	-7.0	
Spain	1,337	1,286	23	8	1,317	576	0.3	-1.5	
Turkey	318	451	49	9	509	197	0.1	60.1	
Other Europe	163	563	16	13	592	238	0.2	263.2	
<b>Americas</b>	<b>24,316</b>	<b>26,847</b>	<b>941</b>	<b>417</b>	<b>28,205</b>	<b>12,766</b>	<b>7.3</b>	<b>16.0</b>	
Argentina	663	740	3	1	744	387	0.2	12.2	
Brazil	577	723	6	6	735	383	0.2	27.4	
Canada	6,085	6,312	173	32	6,517	2,929	1.7	7.1	
Chile	533	715	14	2	731	392	0.2	37.1	
Colombia	55	69	5	2	76	42	0.0	38.2	
Costa Rica	27	11	2	1	14	7	0.0	-48.1	
Ecuador	12	27	1	3	31	18	0.0	158.3	
Mexico	207	268	5	0	273	129	0.1	31.9	
Peru	42	34	1	0	35	19	0.0	-16.7	
United States	15,970	17,731	717	360	18,808	8,343	4.9	17.8	
Uruguay	17	30	2	0	32	15	0.0	88.2	
Other Americas	128	187	12	10	209	102	0.1	63.3	
<b>Africa</b>	<b>414</b>	<b>467</b>	<b>37</b>	<b>15</b>	<b>519</b>	<b>233</b>	<b>0.1</b>	<b>25.4</b>	
Cameroon	27	10	2	1	13	1	0.0	-51.9	
Congo	14	3	0	1	4	1	0.0	-71.4	
Ghana	18	7	2	1	10	4	0.0	-44.4	
Kenya	18	22	2	4	28	20	0.0	55.6	
Liberia	12	2	0	0	2	0	0.0	-83.3	
Nigeria	78	30	17	1	48	2	0.0	-38.5	
Sudan	4	5	0	0	5	0	0.0	25.0	
South Africa	212	359	12	3	374	187	0.1	76.4	
Uganda	5	2	0	1	3	2	0.0	-40.0	
Other Africa	26	27	2	3	32	16	0.0	23.1	
<b>Middle East</b>	<b>1,405</b>	<b>1,379</b>	<b>20</b>	<b>6</b>	<b>1,405</b>	<b>499</b>	<b>0.4</b>	<b>0.0</b>	
Egypt	22	13	5	2	20	2	0.0	-9.1	
Iran	45	67	2	0	69	22	0.0	53.3	
Iraq	11	8	0	0	8	1	0.0	-27.3	
Israel	1,229	1,094	12	0	1,106	455	0.3	-10.0	
Kuwait	53	129	0	0	129	3	0.0	143.4	
Oman	1	14	0	0	14	0	0.0	1300.0	
Palestine	2	3	0	0	3	2	0.0	50.0	
Qatar	1	6	0	0	6	0	0.0	500.0	
Saudi Arabia	9	21	0	1	22	5	0.0	144.4	
United Arab Emirates	11	3	0	0	3	0	0.0	-72.7	
Yemen	2	8	0	1	9	0	0.0	350.0	
Other Middle East	19	13	1	2	16	9	0.0	-15.8	

### Remark:

- Cambodian outbound tourist departures: 65,259
- International outbound tourist departures: 386,508



**COMPILED BY:**

1. Mr. Kong Sopheareak

Director  
Statistics & Tourism Information Department  
Fax: +855 23 885003  
E-mail: kong@mot.gov.kh

2. Mr. Horth Vanny

Chief of Tourism Statistics Office  
Compile and data analysis  
Tel.: +855 12 827664