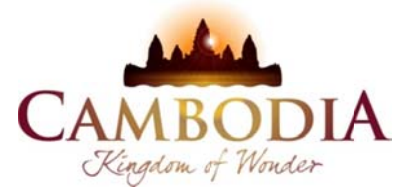




KINGDOM OF CAMBODIA  
NATION RELIGION KING



# TOURISM STATISTICS REPORT

# April 2013

**MINISTRY OF TOURISM**

Statistics and Tourism Information Department

No. A3, Street 169, Sangkat Veal Vong, Khan 7 Makara, Phnom Penh, Cambodia.

Fax: +855 23 885003

E-mail: [kong@mot.gov.kh](mailto:kong@mot.gov.kh)

Web site: [www.mot.gov.kh](http://www.mot.gov.kh)

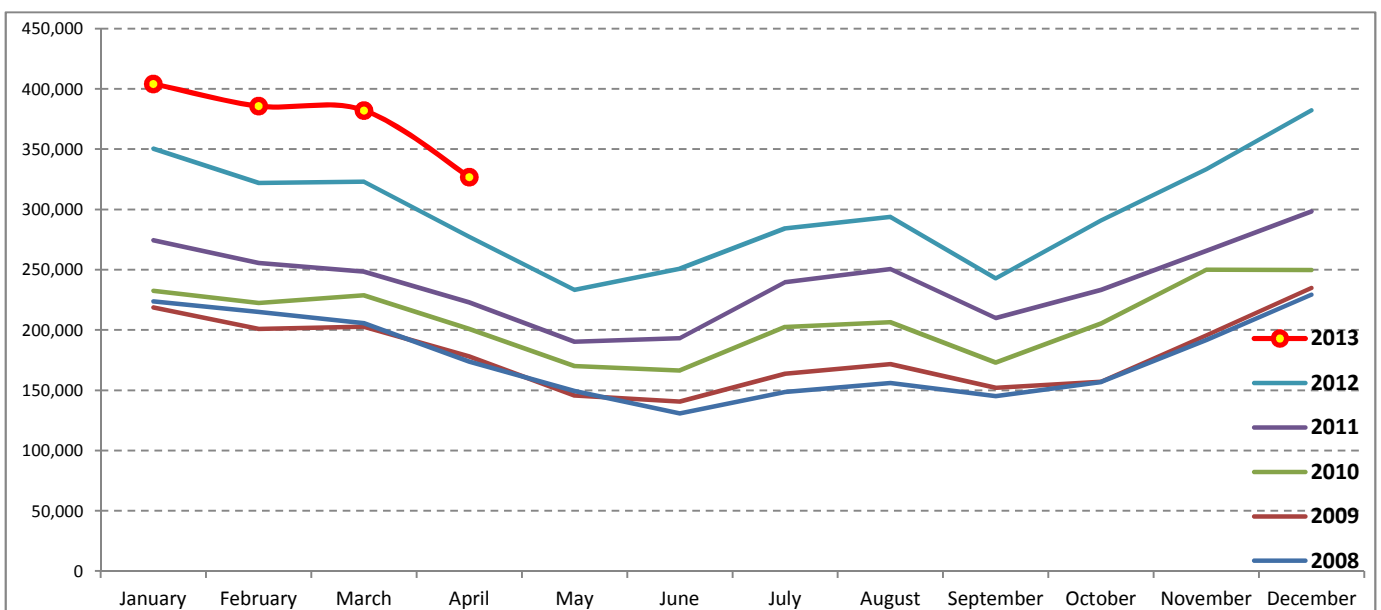
## Tourism Highlights

### International Tourist Arrivals, Average Length of Stay, Hotels Occupancy & Tourism Receipts 1993 - 2012

Years	Tourist Arrivals		Average Length	Hotels Occupancy	Tourism Receipts
	number	change (%)	of Stay (days)	(%)	(Million US\$)
1993	118,183	-	N/A	N/A	N/A
1994	176,617	49.4	N/A	N/A	N/A
1995	219,680	24.4	8.00	37.00	100
1996	260,489	18.6	7.50	40.00	118
1997	218,843	-16.0	6.40	30.00	103
1998	286,524	30.9	5.20	40.00	166
1999	367,743	28.3	5.50	44.00	190
2000	466,365	26.8	5.50	45.00	228
2001	604,919	29.7	5.50	48.00	304
2002	786,524	30.0	5.80	50.00	379
2003	701,014	-10.9	5.50	50.00	347
2004	1,055,202	50.5	6.30	52.00	578
2005	1,421,615	34.7	6.30	52.00	832
2006	1,700,041	19.6	6.50	54.79	1,049
2007	2,015,128	18.5	6.50	54.79	1,400
2008	2,125,465	5.5	6.65	62.68	1,595
2009	2,161,577	1.7	6.45	63.57	1,561
2010	2,508,289	16.0	6.45	65.74	1,786
2011	2,881,862	14.9	6.50	66.15	1,912
2012	3,584,307	24.4	6.30	68.49	2,210

### International tourist arrivals to Cambodia

Destination	Months	2008	2009	2010	2011	2012	2013	change (%) 2013*/12
<b>Cambodia</b>	<b>Q1</b>	<b>644,205</b>	<b>622,288</b>	<b>683,692</b>	<b>778,467</b>	<b>995,210</b>	<b>1,172,072</b>	<b>17.8</b>
<i>International tourist arrivals by all means of transportations</i>	January	223,581	218,691	232,590	274,471	350,257	404,106	15.4
	February	214,902	200,789	222,354	255,499	321,870	385,760	19.8
	March	205,722	202,808	228,748	248,497	323,083	382,206	18.3
	<b>Q2</b>	<b>454,031</b>	<b>464,230</b>	<b>537,464</b>	<b>606,562</b>	<b>761,442</b>	<b>327,000</b>	
	April	173,903	177,955	200,965	223,032	277,304	327,000	17.9
	May	149,275	145,564	170,164	190,258	233,220		
	June	130,853	140,711	166,335	193,272	250,918		
	<b>Q3</b>	<b>449,693</b>	<b>487,422</b>	<b>582,024</b>	<b>699,760</b>	<b>820,888</b>	<b>0</b>	
	July	148,449	163,817	202,349	239,527	284,282		
	August	156,098	171,668	206,563	250,429	293,859		
	September	145,146	151,937	173,112	209,804	242,747		
	<b>Q4</b>	<b>577,536</b>	<b>587,637</b>	<b>705,109</b>	<b>797,073</b>	<b>1,006,767</b>	<b>0</b>	
	October	156,718	157,105	205,515	233,190	290,959		
	November	191,549	195,570	249,892	265,539	333,482		
	December	229,269	234,962	249,702	298,344	382,326		
	<b>Total</b>	<b>2,125,465</b>	<b>2,161,577</b>	<b>2,508,289</b>	<b>2,881,862</b>	<b>3,584,307</b>	<b>1,499,072</b>	<b>17.8</b>



Source: Statistics and Tourism Information Department, MOT

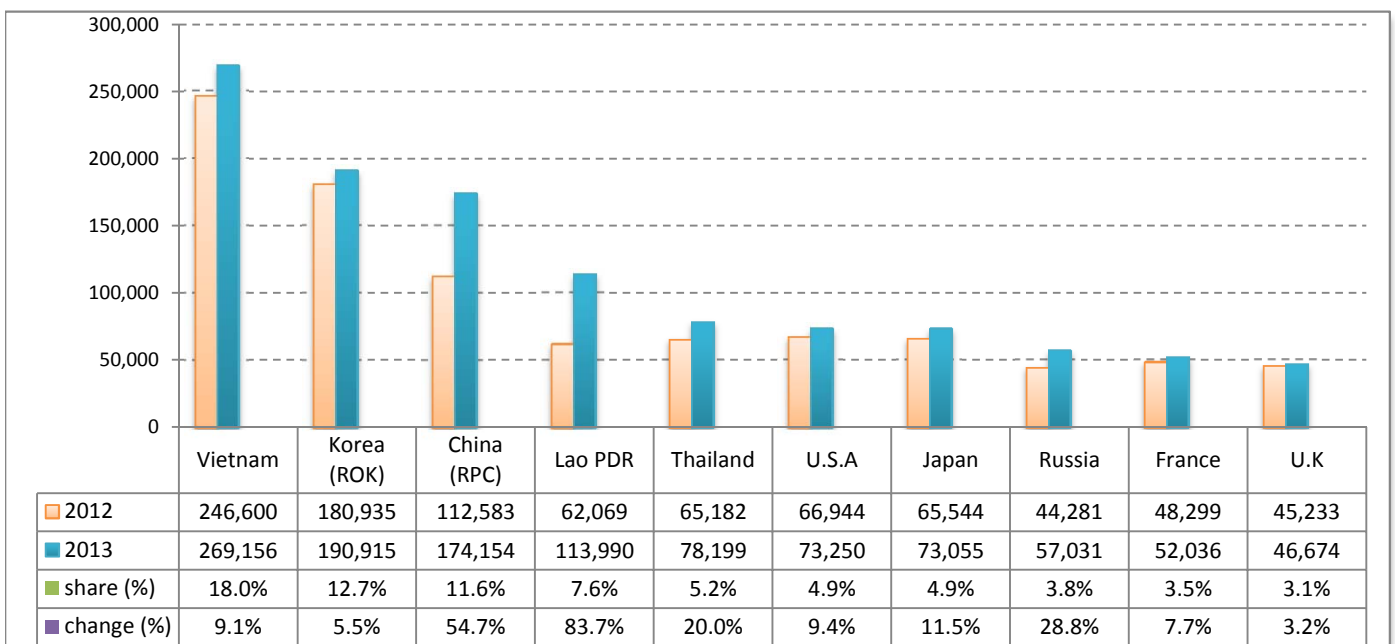
## Executive Summary Report in the First Four Months 2013

I. International tourist arrivals to Cambodia in January - April 2013 was: **1,499,072**

### II. Mode of arrivals

	arrivals	share (%)
<b>Air</b>	<b>756,508</b>	<b>50.5</b>
Phnom Penh Int'l Airport	281,771	18.8
Siem Reap Int'l Airport	474,737	31.7
<b>Land and Water ways</b>	<b>742,564</b>	<b>49.5</b>
Land	711,530	47.5
Waterway	31,034	2.1
<b>Total</b>	<b>1,499,072</b>	<b>100.0</b>

### III. Top ten markets arrivals in January - April 2013



### IV. International tourist arrivals to Cambodia in January - April 2013

	Inbound tourism		share (%)		change (%)
	2012	2013	2012	2013	2013*/12
<b>Air</b>	<b>640,038</b>	<b>756,508</b>	<b>50.3</b>	<b>50.5</b>	<b>18.2</b>
Phnom Penh Int'l Airport	241,291	281,771	19.0	18.8	16.8
Siem Reap Int'l Airport	398,747	474,737	31.3	31.7	19.1
<b>Land and Water ways</b>	<b>632,476</b>	<b>742,564</b>	<b>49.7</b>	<b>49.5</b>	<b>17.4</b>
Land	592,745	711,530	46.6	47.5	20.0
Waterway	39,731	31,034	3.1	2.1	-21.9
<b>Total</b>	<b>1,272,514</b>	<b>1,499,072</b>	<b>100.0</b>	<b>100.0</b>	<b>17.8</b>

### V. Remark: Percentage share of international tourist arrivals at destinations in January - April 2013

	Arrivals		share (%)		change (%)
	2012	2013	2012	2013	2013*/12
Phnom Penh & Other Destinations	452,862	637,922	35.6	42.6	40.9
Siem Reap Province	819,652	861,150	64.4	57.4	5.1
<b>Total</b>	<b>1,272,514</b>	<b>1,499,072</b>	<b>100.0</b>	<b>100.0</b>	<b>17.8</b>

### VI. Outbound tourists departures in January - April 2013

	Outbound tourism		change (%)
	2012	2013	2013*/12
Cambodian outbound tourists	259,005	283,542	9.5
International outbound tourists	1,262,496	1,506,005	19.3

## International Tourist Arrivals to Cambodia by Country of Residence in January - April 2013

(by all mean of transportations)

Regions Country of Residence	2012		2013			share		change
		Purpose of Visit	Total	Female	share (%)	change (%)		
							Holiday	Business
<b>GRAND TOTAL</b>	<b>1,272,514</b>	<b>1,425,303</b>	<b>62,903</b>	<b>10,866</b>	<b>1,499,072</b>	<b>703,058</b>	<b>100.0</b>	<b>17.8</b>
<b>Asia and the Pacific</b>	<b>916,233</b>	<b>1,044,752</b>	<b>50,553</b>	<b>5,882</b>	<b>1,101,187</b>	<b>529,138</b>	<b>73.5</b>	<b>20.2</b>
<b>ASEAN (South-East Asia)</b>	<b>462,641</b>	<b>546,233</b>	<b>12,956</b>	<b>2,780</b>	<b>561,969</b>	<b>275,376</b>	<b>37.5</b>	<b>21.5</b>
Brunei Darussalam	336	202	5	18	225	93	0.0	-33.0
Indonesia	5,913	7,237	1,223	74	8,534	2,751	0.6	44.3
Lao PDR	62,069	113,811	57	122	113,990	73,155	7.6	83.7
Malaysia	34,703	35,443	2,588	89	38,120	13,222	2.5	9.8
Myanmar	1,886	1,492	201	58	1,751	798	0.1	-7.2
Philippines	31,639	33,877	2,280	269	36,426	21,420	2.4	15.1
Singapore	14,313	14,691	824	53	15,568	5,186	1.0	8.8
Thailand	65,182	73,995	3,084	1,120	78,199	34,183	5.2	20.0
Vietnam	246,600	265,485	2,694	977	269,156	124,568	18.0	9.1
<b>North-East Asia</b>	<b>393,938</b>	<b>439,149</b>	<b>33,796</b>	<b>2,053</b>	<b>474,998</b>	<b>227,123</b>	<b>31.7</b>	<b>20.6</b>
China (RPC)	112,583	152,860	20,553	741	174,154	83,680	11.6	54.7
Hong Kong SAR	2,626	2,663	69	0	2,732	1,366	0.2	4.0
Japan	65,544	68,731	3,624	700	73,055	31,586	4.9	11.5
Korea (ROK)	180,935	184,767	5,552	596	190,915	95,917	12.7	5.5
Mongolia	147	139	15	6	160	69	0.0	8.8
Taiwan, China	32,103	29,989	3,983	10	33,982	14,505	2.3	5.9
<b>Southern Asia</b>	<b>7,420</b>	<b>7,335</b>	<b>1,199</b>	<b>321</b>	<b>8,855</b>	<b>2,337</b>	<b>0.6</b>	<b>19.3</b>
Afghanistan	59	98	0	6	104	11	0.0	76.3
Bangladesh	382	484	94	41	619	82	0.0	62.0
Bhutan	42	26	4	9	39	8	0.0	-7.1
India	5,770	5,865	788	155	6,808	1,922	0.5	18.0
Nepal	374	332	63	54	449	111	0.0	20.1
Pakistan	364	176	122	32	330	55	0.0	-9.3
Srilanka	429	354	128	24	506	148	0.0	17.9
<b>Western Asia</b>	<b>1,042</b>	<b>1,436</b>	<b>77</b>	<b>4</b>	<b>1,517</b>	<b>834</b>	<b>0.1</b>	<b>45.6</b>
Kazakhstan	835	1,206	71	3	1,280	676	0.1	53.3
Uzbekistan	207	230	6	1	237	158	0.0	14.5
<b>Oceania</b>	<b>49,019</b>	<b>49,121</b>	<b>2,360</b>	<b>664</b>	<b>52,145</b>	<b>22,748</b>	<b>3.5</b>	<b>6.4</b>
Australia	42,844	43,144	2,016	595	45,755	20,025	3.1	6.8
Fiji	36	25	3	3	31	10	0.0	-13.9
New Zealand	6,139	5,952	341	66	6,359	2,713	0.4	3.6
Other Asia & the Pacific	2,173	1,478	165	60	1,703	720	0.1	-21.6
<b>Europe</b>	<b>252,781</b>	<b>273,561</b>	<b>7,863</b>	<b>2,783</b>	<b>284,207</b>	<b>123,903</b>	<b>19.0</b>	<b>12.4</b>
<b>Northern Europe</b>	<b>67,937</b>	<b>68,518</b>	<b>2,498</b>	<b>614</b>	<b>71,630</b>	<b>28,258</b>	<b>4.8</b>	<b>5.4</b>
Denmark	4,374	4,743	123	40	4,906	1,997	0.3	12.2
Finland	2,975	3,254	103	32	3,389	1,201	0.2	13.9
Iceland	192	230	15	5	250	101	0.0	30.2
Ireland	2,918	3,130	132	33	3,295	1,280	0.2	12.9
Norway	4,001	4,249	92	51	4,392	1,922	0.3	9.8
Sweden	8,244	8,425	201	98	8,724	3,392	0.6	5.8
United Kingdom	45,233	44,487	1,832	355	46,674	18,365	3.1	3.2
<b>Western Europe</b>	<b>107,264</b>	<b>112,255</b>	<b>3,904</b>	<b>1,757</b>	<b>117,916</b>	<b>49,380</b>	<b>7.9</b>	<b>9.9</b>
Austria	3,948	4,231	82	47	4,360	1,741	0.3	10.4
Belgium	5,611	5,514	248	80	5,842	2,274	0.4	4.1
France	48,299	48,592	2,336	1,108	52,036	22,480	3.5	7.7
Germany	32,223	35,263	696	324	36,283	14,886	2.4	12.6
Luxembourg	182	229	2	2	233	99	0.0	28.0
Monaco	18	31	3	1	35	17	0.0	94.4
Netherlands	8,948	9,911	325	110	10,346	4,276	0.7	15.6
Switzerland	8,035	8,484	212	85	8,781	3,607	0.6	9.3
<b>Central / Eastern Europe</b>	<b>56,505</b>	<b>72,300</b>	<b>781</b>	<b>159</b>	<b>73,240</b>	<b>37,671</b>	<b>4.9</b>	<b>29.6</b>
Bulgaria	266	370	4	2	376	179	0.0	41.4
Czech Republic	2,077	2,374	14	20	2,408	994	0.2	15.9
Estonia	443	648	21	8	677	263	0.0	52.8
Hungary	1,267	1,569	17	11	1,597	705	0.1	26.0
Lithuania	524	858	9	0	867	426	0.1	65.5
Poland	4,275	5,738	41	20	5,799	2,859	0.4	35.6
Romania	487	574	29	1	604	310	0.0	24.0
Russian Federation	44,281	56,387	572	72	57,031	30,007	3.8	28.8
Slovakia	761	965	41	19	1,025	430	0.1	34.7
Ukraine	2,124	2,817	33	6	2,856	1,498	0.2	34.5

## International Tourist Arrivals to Cambodia by Country of Residence in January - April 2013

(by all mean of transportations)

Regions Country of Residence	2012		2013			share		change	
			Purpose of Visit			Total	Female	(%)	(%)
			Holiday	Business	Other			2013*	2013*/12
<b>GRAND TOTAL</b>	<b>1,272,514</b>	<b>1,425,303</b>	<b>62,903</b>	<b>10,866</b>	<b>1,499,072</b>	<b>703,058</b>	<b>100.0</b>	<b>17.8</b>	
<b>Southern Europe</b>	<b>19,172</b>	<b>19,153</b>	<b>586</b>	<b>209</b>	<b>19,948</b>	<b>7,984</b>	<b>1.3</b>	<b>4.0</b>	
Croatia	281	336	7	3	346	168	0.0	23.1	
Greece	403	435	10	2	447	145	0.0	10.9	
Italy	8,692	9,173	244	96	9,513	3,551	0.6	9.4	
Portugal	955	1,368	36	11	1,415	701	0.1	48.2	
Serbia	157	244	14	6	264	141	0.0	68.2	
Slovenia	467	507	32	6	545	232	0.0	16.7	
Spain	7,040	5,420	136	67	5,623	2,445	0.4	-20.1	
Turkey	1,177	1,670	107	18	1,795	601	0.1	52.5	
Other Europe	1,903	1,335	94	44	1,473	610	0.1	-22.6	
<b>Americas</b>	<b>97,267</b>	<b>100,671</b>	<b>4,154</b>	<b>2,076</b>	<b>106,901</b>	<b>47,417</b>	<b>7.1</b>	<b>9.9</b>	
Argentina	2,534	3,230	14	12	3,256	1,661	0.2	28.5	
Brazil	2,203	2,905	18	15	2,938	1,437	0.2	33.4	
Canada	21,020	21,292	800	182	22,274	9,819	1.5	6.0	
Chile	1,322	1,762	28	8	1,798	941	0.1	36.0	
Colombia	422	534	22	8	564	277	0.0	33.6	
Costa Rica	118	116	4	2	122	63	0.0	3.4	
Ecuador	41	84	6	3	93	45	0.0	126.8	
Mexico	1,223	1,377	28	4	1,409	690	0.1	15.2	
Peru	202	201	18	2	221	106	0.0	9.4	
United States	66,944	68,301	3,147	1,802	73,250	31,887	4.9	9.4	
Uruguay	109	194	4	5	203	96	0.0	86.2	
Other Americas	1,129	675	65	33	773	395	0.1	-31.5	
<b>Africa</b>	<b>1,776</b>	<b>1,799</b>	<b>217</b>	<b>84</b>	<b>2,100</b>	<b>891</b>	<b>0.1</b>	<b>18.2</b>	
Cameroon	83	38	3	12	53	8	0.0	-36.1	
Congo	23	12	2	2	16	5	0.0	-30.4	
Ghana	67	82	6	5	93	33	0.0	38.8	
Kenya	82	74	7	9	90	50	0.0	9.8	
Liberia	43	21	0	1	22	5	0.0	-48.8	
Nigeria	205	84	100	11	195	14	0.0	-4.9	
Sudan	20	13	0	2	15	1	0.0	-25.0	
South Africa	1,082	1,321	82	23	1,426	685	0.1	31.8	
Uganda	22	15	1	7	23	9	0.0	4.5	
Other Africa	149	139	16	12	167	81	0.0	12.1	
<b>Middle East</b>	<b>4,457</b>	<b>4,520</b>	<b>116</b>	<b>41</b>	<b>4,677</b>	<b>1,709</b>	<b>0.3</b>	<b>4.9</b>	
Egypt	64	62	18	3	83	11	0.0	29.7	
Iran	228	240	11	1	252	81	0.0	10.5	
Iraq	31	46	0	0	46	11	0.0	48.4	
Israel	3,588	3,473	77	11	3,561	1,484	0.2	-0.8	
Kuwait	191	353	0	12	365	15	0.0	91.1	
Oman	38	56	0	0	56	4	0.0	47.4	
Palestine	10	27	1	0	28	6	0.0	180.0	
Qatar	39	50	0	1	51	27	0.0	30.8	
Saudi Arabia	31	53	2	2	57	11	0.0	83.9	
United Arab Emirates	74	39	0	0	39	4	0.0	-47.3	
Yemen	34	35	1	2	38	5	0.0	11.8	
Other Middle East	129	86	6	9	101	50	0.0	-21.7	

### Remark:

- Cambodian outbound tourist departures: 283,542  
 - International outbound tourist departures: 1,506,005

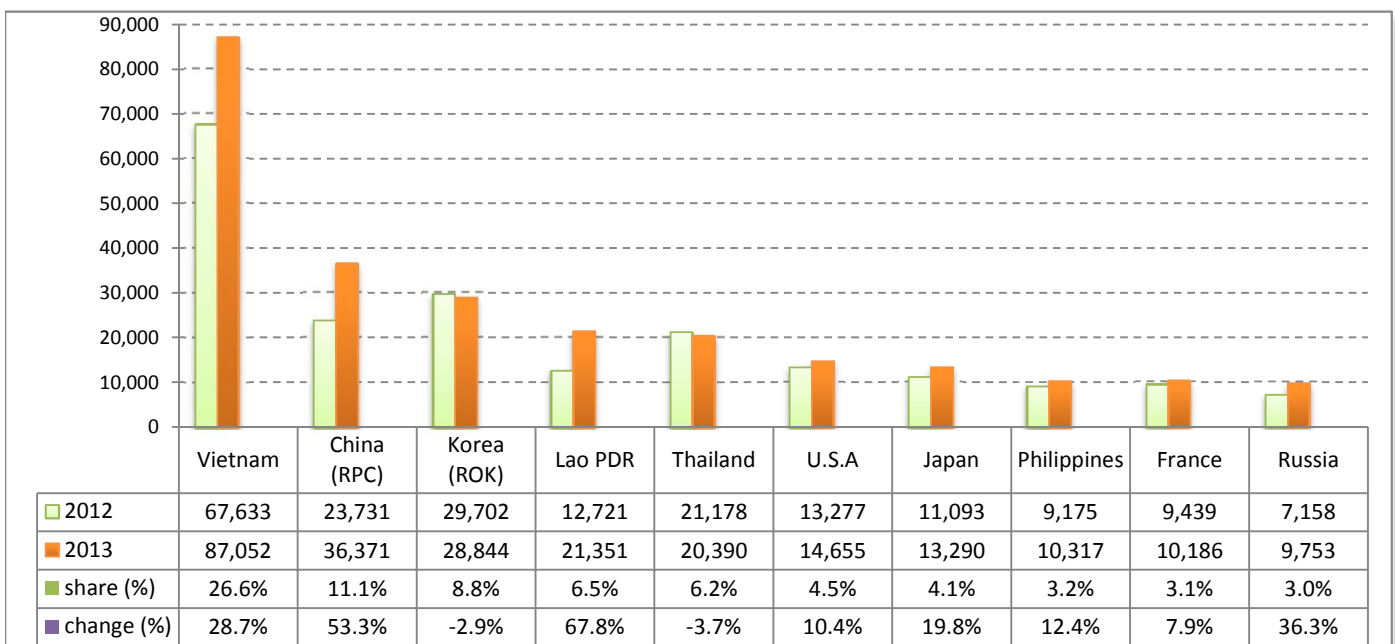
## Executive Summary Report in April 2013

I. International tourist arrivals to Cambodia in April 2013 was: **327,000**

### II. Mode of arrivals

	arrivals	share (%)
<b>Air</b>	<b>145,348</b>	<b>44.4</b>
Phnom Penh Int'l Airport	62,859	19.2
Siem Reap Int'l Airport	82,489	25.2
<b>Land and Water ways</b>	<b>181,652</b>	<b>55.6</b>
Land	175,812	53.8
Waterway	5,840	1.8
<b>Total</b>	<b>327,000</b>	<b>100.0</b>

### III. Top ten markets arrivals in April 2013



### IV. International tourist arrivals to Cambodia in April 2013

	Inbound tourism		share (%)		change (%)
	2012	2013	2012	2013	2013*/12
<b>Air</b>	<b>126,282</b>	<b>145,348</b>	<b>45.5</b>	<b>44.4</b>	<b>15.1</b>
Phnom Penh Int'l Airport	53,883	62,859	19.4	19.2	16.7
Siem Reap Int'l Airport	72,399	82,489	26.1	25.2	13.9
<b>Land and Water ways</b>	<b>151,022</b>	<b>181,652</b>	<b>54.5</b>	<b>55.6</b>	<b>20.3</b>
Land	147,325	175,812	53.1	53.8	19.3
Waterway	3,697	5,840	1.3	1.8	58.0
<b>Total</b>	<b>277,304</b>	<b>327,000</b>	<b>100.0</b>	<b>100.0</b>	<b>17.9</b>

### V. Remark: Percentage share of international tourist arrivals at destinations in April 2013

	Arrivals		share (%)		change (%)
	2012	2013	2012	2013	2013*/12
Phnom Penh & Other Destinations	97,526	160,579	35.2	49.1	64.7
Siem Reap Province	179,778	166,421	64.8	50.9	-7.4
<b>Total</b>	<b>277,304</b>	<b>327,000</b>	<b>100.0</b>	<b>100.0</b>	<b>17.9</b>

### VI. Outbound tourists departures in April 2013

	Outbound tourism		change (%)
	2012	2013	2013*/12
Cambodian outbound tourists	70,738	81,998	15.9
International outbound tourists	275,739	323,714	17.4

## International Tourist Arrivals to Cambodia by Country of Residence in March 2013

(by all mean of transportations)

Regions Country of Residence	2012	2013			Total	Female	share	change
		Purpose of Visit					(%)	(%)
		Holiday	Business	Other			2013*	2013*/12
<b>GRAND TOTAL</b>	<b>277,304</b>	<b>306,356</b>	<b>17,598</b>	<b>3,046</b>	<b>327,000</b>	<b>152,040</b>	<b>100.0</b>	<b>17.9</b>
<b>Asia and the Pacific</b>	<b>212,038</b>	<b>239,887</b>	<b>14,566</b>	<b>1,718</b>	<b>256,171</b>	<b>121,355</b>	<b>78.3</b>	<b>20.8</b>
<b>ASEAN (South-East Asia)</b>	<b>125,392</b>	<b>150,322</b>	<b>3,975</b>	<b>858</b>	<b>155,155</b>	<b>76,455</b>	<b>47.4</b>	<b>23.7</b>
Brunei Darussalam	48	27	1	7	35	14	0.0	-27.1
Indonesia	1,593	1,895	348	26	2,269	680	0.7	42.4
Lao PDR	12,721	21,285	17	49	21,351	14,022	6.5	67.8
Malaysia	8,971	8,527	791	25	9,343	3,081	2.9	4.1
Myanmar	625	647	79	16	742	367	0.2	18.7
Philippines	9,175	9,408	824	85	10,317	6,014	3.2	12.4
Singapore	3,448	3,399	245	12	3,656	1,119	1.1	6.0
Thailand	21,178	19,140	963	287	20,390	8,791	6.2	-3.7
Vietnam	67,633	85,994	707	351	87,052	42,367	26.6	28.7
<b>North-East Asia</b>	<b>73,316</b>	<b>76,877</b>	<b>9,566</b>	<b>553</b>	<b>86,996</b>	<b>39,228</b>	<b>26.6</b>	<b>18.7</b>
China (RPC)	23,731	30,370	5,789	212	36,371	16,507	11.1	53.3
Hong Kong SAR	893	372	21	0	393	182	0.1	-56.0
Japan	11,093	12,171	930	189	13,290	5,252	4.1	19.8
Korea (ROK)	29,702	26,970	1,724	150	28,844	13,932	8.8	-2.9
Mongolia	19	18	3	1	22	13	0.0	15.8
Taiwan, China	7,878	6,976	1,099	1	8,076	3,342	2.5	2.5
<b>Southern Asia</b>	<b>1,939</b>	<b>1,729</b>	<b>338</b>	<b>73</b>	<b>2,140</b>	<b>550</b>	<b>0.7</b>	<b>10.4</b>
Afghanistan	9	44	0	2	46	2	0.0	411.1
Bangladesh	78	150	31	14	195	27	0.1	150.0
Bhutan	6	4	1	2	7	1	0.0	16.7
India	1,562	1,289	209	33	1,531	423	0.5	-2.0
Nepal	96	77	22	9	108	28	0.0	12.5
Pakistan	73	51	43	8	102	17	0.0	39.7
Sri Lanka	115	114	32	5	151	52	0.0	31.3
<b>Western Asia</b>	<b>151</b>	<b>192</b>	<b>16</b>	<b>1</b>	<b>209</b>	<b>132</b>	<b>0.1</b>	<b>38.4</b>
Kazakhstan	96	131	15	1	147	81	0.0	53.1
Uzbekistan	55	61	1	0	62	51	0.0	12.7
<b>Oceania</b>	<b>10,494</b>	<b>10,497</b>	<b>647</b>	<b>223</b>	<b>11,367</b>	<b>4,811</b>	<b>3.5</b>	<b>8.3</b>
Australia	8,916	8,942	554	199	9,695	4,088	3.0	8.7
Fiji	6	3	1	1	5	2	0.0	-16.7
New Zealand	1,572	1,552	92	23	1,667	721	0.5	6.0
Other Asia & the Pacific	746	270	24	10	304	179	0.1	-59.2
<b>Europe</b>	<b>45,321</b>	<b>46,482</b>	<b>1,906</b>	<b>730</b>	<b>49,118</b>	<b>21,364</b>	<b>15.0</b>	<b>8.4</b>
<b>Northern Europe</b>	<b>11,721</b>	<b>11,979</b>	<b>625</b>	<b>172</b>	<b>12,776</b>	<b>5,065</b>	<b>3.9</b>	<b>9.0</b>
Denmark	646	737	28	16	781	304	0.2	20.9
Finland	442	346	26	6	378	128	0.1	-14.5
Iceland	59	50	5	1	56	24	0.0	-5.1
Ireland	584	598	27	9	634	259	0.2	8.6
Norway	669	535	15	14	564	234	0.2	-15.7
Sweden	1,094	1,068	48	32	1,148	466	0.4	4.9
United Kingdom	8,227	8,645	476	94	9,215	3,650	2.8	12.0
<b>Western Europe</b>	<b>19,136</b>	<b>19,221</b>	<b>903</b>	<b>481</b>	<b>20,605</b>	<b>8,530</b>	<b>6.3</b>	<b>7.7</b>
Austria	555	475	12	3	490	181	0.1	-11.7
Belgium	1,089	1,108	61	28	1,197	477	0.4	9.9
France	9,439	9,361	530	295	10,186	4,289	3.1	7.9
Germany	5,328	5,252	161	97	5,510	2,238	1.7	3.4
Luxembourg	45	41	0	0	41	21	0.0	-8.9
Monaco	8	16	2	1	19	11	0.0	137.5
Netherlands	1,396	1,717	84	37	1,838	751	0.6	31.7
Switzerland	1,276	1,251	53	20	1,324	562	0.4	3.8
<b>Central / Eastern Europe</b>	<b>9,098</b>	<b>11,801</b>	<b>198</b>	<b>19</b>	<b>12,018</b>	<b>6,303</b>	<b>3.7</b>	<b>32.1</b>
Bulgaria	51	72	1	0	73	30	0.0	43.1
Czech Republic	322	325	1	3	329	127	0.1	2.2
Estonia	34	75	6	0	81	22	0.0	138.2
Hungary	95	146	5	1	152	62	0.0	60.0
Lithuania	62	77	3	0	80	43	0.0	29.0
Poland	808	806	11	6	823	391	0.3	1.9
Romania	74	74	8	0	82	42	0.0	10.8
Russian Federation	7,158	9,600	148	5	9,753	5,251	3.0	36.3
Slovakia	185	231	6	4	241	118	0.1	30.3
Ukraine	309	395	9	0	404	217	0.1	30.7

## International Tourist Arrivals to Cambodia by Country of Residence in March 2013

(by all mean of transportations)

Regions Country of Residence	2012	2013			Total	Female	share	change
		Purpose of Visit					(%)	(%)
		Holiday	Business	Other			2013*	2013*/12
<b>GRAND TOTAL</b>	<b>277,304</b>	<b>306,356</b>	<b>17,598</b>	<b>3,046</b>	<b>327,000</b>	<b>152,040</b>	<b>100.0</b>	<b>17.9</b>
<b>Southern Europe</b>	<b>4,579</b>	<b>3,250</b>	<b>162</b>	<b>49</b>	<b>3,461</b>	<b>1,303</b>	<b>1.1</b>	<b>-24.4</b>
Croatia	27	41	1	0	42	17	0.0	55.6
Greece	103	112	1	0	113	44	0.0	9.7
Italy	1,077	1,347	77	23	1,447	473	0.4	34.4
Portugal	297	347	9	3	359	165	0.1	20.9
Serbia	24	48	5	0	53	28	0.0	120.8
Slovenia	72	51	4	0	55	24	0.0	-23.6
Spain	2,749	1,063	46	22	1,131	491	0.3	-58.9
Turkey	230	241	19	1	261	61	0.1	13.5
Other Europe	787	231	18	9	258	163	0.1	-67.2
<b>Americas</b>	<b>18,865</b>	<b>18,992</b>	<b>1,036</b>	<b>567</b>	<b>20,595</b>	<b>8,947</b>	<b>6.3</b>	<b>9.2</b>
Argentina	571	586	5	1	592	301	0.2	3.7
Brazil	418	595	1	4	600	281	0.2	43.5
Canada	3,385	3,403	172	46	3,621	1,590	1.1	7.0
Chile	171	200	3	4	207	93	0.1	21.1
Colombia	130	121	8	0	129	61	0.0	-0.8
Costa Rica	14	33	1	0	34	22	0.0	142.9
Ecuador	6	10	2	0	12	3	0.0	100.0
Mexico	329	394	7	2	403	214	0.1	22.5
Peru	51	66	9	0	75	35	0.0	47.1
United States	13,277	13,330	821	504	14,655	6,175	4.5	10.4
Uruguay	37	111	0	1	112	54	0.0	202.7
Other Americas	476	143	7	5	155	118	0.0	-67.4
<b>Africa</b>	<b>373</b>	<b>398</b>	<b>53</b>	<b>19</b>	<b>470</b>	<b>185</b>	<b>0.1</b>	<b>26.0</b>
Cameroon	14	9	0	2	11	0	0.0	-21.4
Congo	1	3	1	0	4	1	0.0	300.0
Ghana	9	47	2	1	50	20	0.0	455.6
Kenya	14	11	3	1	15	7	0.0	7.1
Liberia	8	10	0	0	10	3	0.0	25.0
Nigeria	38	12	25	10	47	3	0.0	23.7
Sudan	7	2	0	1	3	0	0.0	-57.1
South Africa	251	279	19	1	299	135	0.1	19.1
Uganda	5	4	0	0	4	2	0.0	-20.0
Other Africa	26	21	3	3	27	14	0.0	3.8
<b>Middle East</b>	<b>707</b>	<b>597</b>	<b>37</b>	<b>12</b>	<b>646</b>	<b>189</b>	<b>0.2</b>	<b>-8.6</b>
Egypt	13	17	6	0	23	3	0.0	76.9
Iran	52	45	4	1	50	18	0.0	-3.8
Iraq	6	9	0	0	9	2	0.0	50.0
Israel	534	391	25	3	419	147	0.1	-21.5
Kuwait	23	55	0	5	60	2	0.0	160.9
Oman	10	16	0	0	16	0	0.0	60.0
Palestine	2	9	0	0	9	1	0.0	350.0
Qatar	5	1	0	0	1	0	0.0	-80.0
Saudi Arabia	7	14	1	1	16	2	0.0	128.6
United Arab Emirates	27	13	0	0	13	2	0.0	-51.9
Yemen	6	14	0	0	14	3	0.0	133.3
Other Middle East	22	13	1	2	16	9	0.0	-27.3

### Remark:

- Cambodian outbound tourist departures: 81,998
- International outbound tourist departures: 323,714



**COMPILED BY:**

1. Mr. Kong Sopheareak

Director  
Statistics & Tourism Information Department  
Fax: +855 23 885003  
E-mail: kong@mot.gov.kh

2. Mr. Horth Vanny

Chief of Tourism Statistics Office  
Compile and data analysis  
Tel.: +855 12 827664