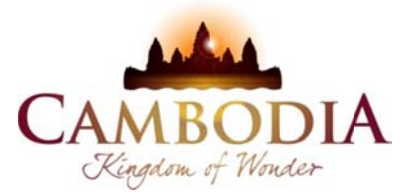




KINGDOM OF CAMBODIA
NATION RELIGION KING



TOURISM STATISTICS REPORT

July 2013

MINISTRY OF TOURISM

Statistics and Tourism Information Department

No. A3, Street 169, Sangkat Veal Vong, Khan 7 Makara, Phnom Penh, Cambodia.

Fax: +855 23 885003

E-mail: kong@mot.gov.kh

Web site: www.mot.gov.kh

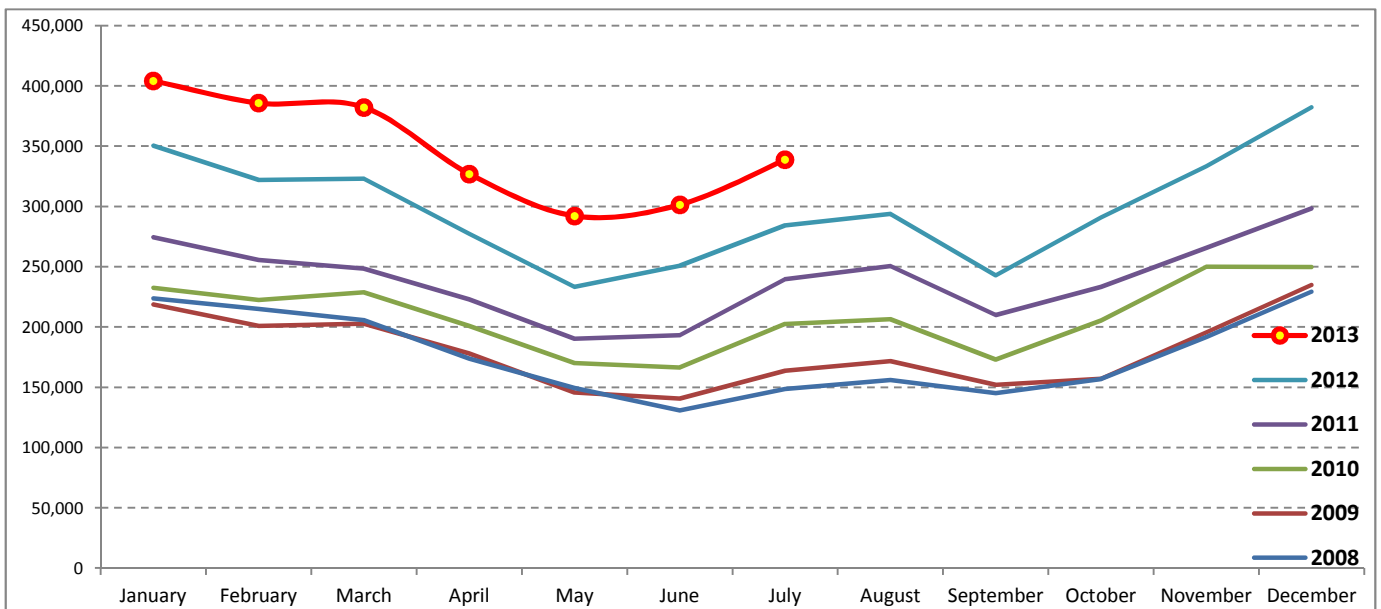
Tourism Highlights

International Tourist Arrivals, Average Length of Stay, Hotels Occupancy & Tourism Receipts 1993 - 2012

| Years | Tourist Arrivals | | Average Length | Hotels Occupancy | Tourism Receipts |
|-------|------------------|------------|----------------|------------------|------------------|
| | number | change (%) | of Stay (days) | (%) | (Million US\$) |
| 1993 | 118,183 | - | N/A | N/A | N/A |
| 1994 | 176,617 | 49.4 | N/A | N/A | N/A |
| 1995 | 219,680 | 24.4 | 8.00 | 37.00 | 100 |
| 1996 | 260,489 | 18.6 | 7.50 | 40.00 | 118 |
| 1997 | 218,843 | -16.0 | 6.40 | 30.00 | 103 |
| 1998 | 286,524 | 30.9 | 5.20 | 40.00 | 166 |
| 1999 | 367,743 | 28.3 | 5.50 | 44.00 | 190 |
| 2000 | 466,365 | 26.8 | 5.50 | 45.00 | 228 |
| 2001 | 604,919 | 29.7 | 5.50 | 48.00 | 304 |
| 2002 | 786,524 | 30.0 | 5.80 | 50.00 | 379 |
| 2003 | 701,014 | -10.9 | 5.50 | 50.00 | 347 |
| 2004 | 1,055,202 | 50.5 | 6.30 | 52.00 | 578 |
| 2005 | 1,421,615 | 34.7 | 6.30 | 52.00 | 832 |
| 2006 | 1,700,041 | 19.6 | 6.50 | 54.79 | 1,049 |
| 2007 | 2,015,128 | 18.5 | 6.50 | 54.79 | 1,400 |
| 2008 | 2,125,465 | 5.5 | 6.65 | 62.68 | 1,595 |
| 2009 | 2,161,577 | 1.7 | 6.45 | 63.57 | 1,561 |
| 2010 | 2,508,289 | 16.0 | 6.45 | 65.74 | 1,786 |
| 2011 | 2,881,862 | 14.9 | 6.50 | 66.15 | 1,912 |
| 2012 | 3,584,307 | 24.4 | 6.30 | 68.49 | 2,210 |

International tourist arrivals to Cambodia

| Destination | Months | 2008 | 2009 | 2010 | 2011 | 2012 | 2013 | change (%) 2013*/12 |
|---------------------------------------|--------------|------------------|------------------|------------------|------------------|------------------|------------------|------------------------|
| Cambodia | Q1 | 644,205 | 622,288 | 683,692 | 778,467 | 995,210 | 1,172,072 | 17.8 |
| <i>International tourist arrivals</i> | January | 223,581 | 218,691 | 232,590 | 274,471 | 350,257 | 404,106 | 15.4 |
| <i>by all means of</i> | February | 214,902 | 200,789 | 222,354 | 255,499 | 321,870 | 385,760 | 19.8 |
| <i>transportations</i> | March | 205,722 | 202,808 | 228,748 | 248,497 | 323,083 | 382,206 | 18.3 |
| | Q2 | 454,031 | 464,230 | 537,464 | 606,562 | 761,442 | 920,527 | 20.9 |
| | April | 173,903 | 177,955 | 200,965 | 223,032 | 277,304 | 327,000 | 17.9 |
| | May | 149,275 | 145,564 | 170,164 | 190,258 | 233,220 | 292,115 | 25.3 |
| | June | 130,853 | 140,711 | 166,335 | 193,272 | 250,918 | 301,412 | 20.1 |
| | Q3 | 449,693 | 487,422 | 582,024 | 699,760 | 820,888 | 338,761 | 19.2 |
| | July | 148,449 | 163,817 | 202,349 | 239,527 | 284,282 | 338,761 | 19.2 |
| | August | 156,098 | 171,668 | 206,563 | 250,429 | 293,859 | | |
| | September | 145,146 | 151,937 | 173,112 | 209,804 | 242,747 | | |
| | Q4 | 577,536 | 587,637 | 705,109 | 797,073 | 1,006,767 | 0 | |
| | October | 156,718 | 157,105 | 205,515 | 233,190 | 290,959 | | |
| | November | 191,549 | 195,570 | 249,892 | 265,539 | 333,482 | | |
| | December | 229,269 | 234,962 | 249,702 | 298,344 | 382,326 | | |
| | Total | 2,125,465 | 2,161,577 | 2,508,289 | 2,881,862 | 3,584,307 | 2,431,360 | 19.1 |



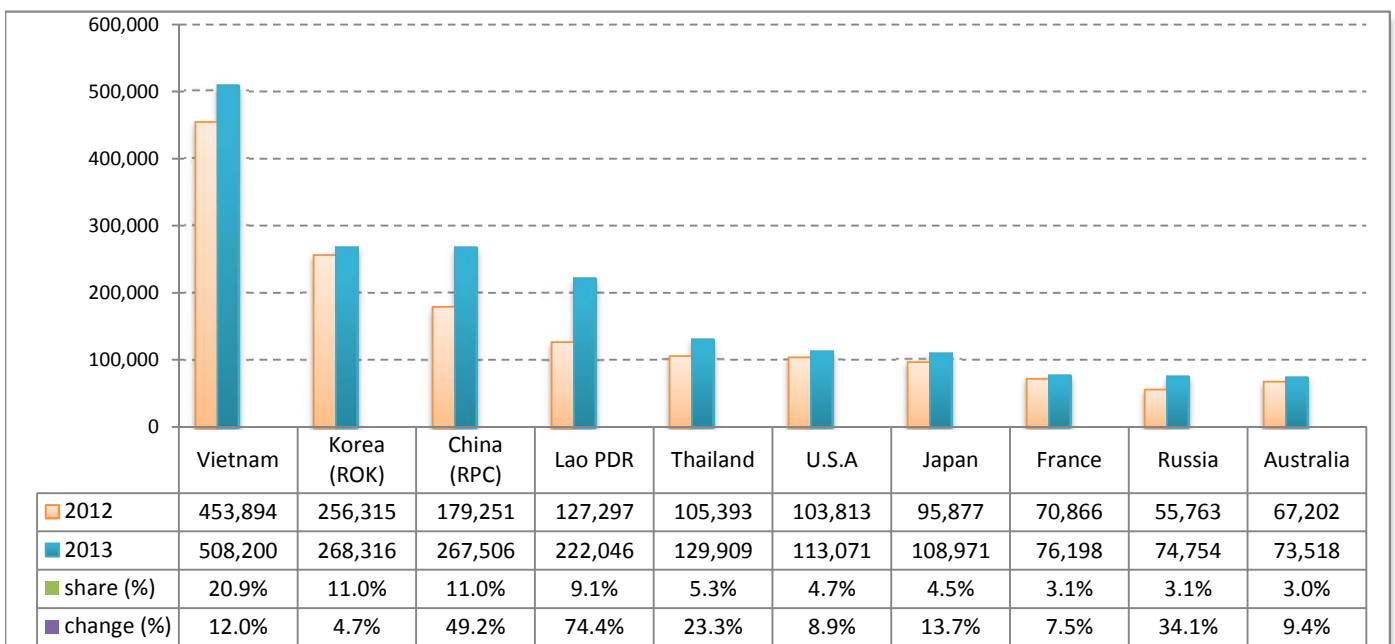
Executive Summary Report in the First Seven Months of 2013

I. International tourist arrivals to Cambodia in January - July 2013 was: **2,431,360**

II. Mode of arrivals

| | arrivals | share (%) |
|----------------------------|------------------|--------------|
| Air | 1,153,864 | 47.5 |
| Phnom Penh Int'l Airport | 474,748 | 19.5 |
| Siem Reap Int'l Airport | 679,116 | 27.9 |
| Land and Water ways | 1,277,496 | 52.5 |
| Land | 1,236,115 | 50.8 |
| Waterway | 41,381 | 1.7 |
| Total | 2,431,360 | 100.0 |

III. Top ten markets arrivals in January - July 2013



IV. International tourist arrivals to Cambodia in January - July 2013

| | Inbound tourism | | share (%) | | change (%) |
|----------------------------|------------------|------------------|--------------|--------------|-------------|
| | 2012 | 2013 | 2012 | 2013 | 2013*/12 |
| Air | 977,284 | 1,153,864 | 47.9 | 47.5 | 18.1 |
| Phnom Penh Int'l Airport | 403,343 | 474,748 | 19.8 | 19.5 | 17.7 |
| Siem Reap Int'l Airport | 573,941 | 679,116 | 28.1 | 27.9 | 18.3 |
| Land and Water ways | 1,063,650 | 1,277,496 | 52.1 | 52.5 | 20.1 |
| Land | 1,014,419 | 1,236,115 | 49.7 | 50.8 | 21.9 |
| Waterway | 49,231 | 41,381 | 2.4 | 1.7 | -15.9 |
| Total | 2,040,934 | 2,431,360 | 100.0 | 100.0 | 19.1 |

V. Remark: Percentage share of international tourist arrivals at destinations in January - July 2013

| | Arrivals | | share (%) | | change (%) |
|---------------------------------|------------------|------------------|--------------|--------------|-------------|
| | 2012 | 2013 | 2012 | 2013 | 2013*/12 |
| Phnom Penh & Other Destinations | 838,813 | 1,149,871 | 41.1 | 47.3 | 37.1 |
| Siem Reap Province | 1,202,121 | 1,281,489 | 58.9 | 52.7 | 6.6 |
| Total | 2,040,934 | 2,431,360 | 100.0 | 100.0 | 19.1 |

VI. Outbound tourism in January - July 2013

| | Outbound tourism | | change (%) |
|---------------------------------|------------------|-----------|------------|
| | 2012 | 2013 | 2013*/12 |
| Cambodian outbound tourists | 455,017 | 509,050 | 11.9 |
| International outbound tourists | 2,001,769 | 2,436,086 | 21.7 |

International Tourist Arrivals to Cambodia by Country of Residence in January - July 2013

(by all mean of transportations)

| Regions Country of Residence | 2012 | | 2013 | | | share | | change |
|---------------------------------|------------------|------------------|----------------|---------------|------------------|------------------|--------------|-------------|
| | | Purpose of Visit | Total | Female | share (%) | change (%) | | |
| | | | | | | | Holiday | Business |
| GRAND TOTAL | 2,040,934 | 2,304,246 | 108,019 | 19,095 | 2,431,360 | 1,136,032 | 100.0 | 19.1 |
| Asia and the Pacific | 1,533,381 | 1,760,580 | 86,827 | 10,574 | 1,857,981 | 886,782 | 76.4 | 21.2 |
| ASEAN (South-East Asia) | 847,709 | 1,019,088 | 22,903 | 5,245 | 1,047,236 | 513,918 | 43.1 | 23.5 |
| Brunei Darussalam | 560 | 359 | 7 | 27 | 393 | 171 | 0.0 | -29.8 |
| Indonesia | 11,338 | 13,247 | 2,198 | 150 | 15,595 | 4,828 | 0.6 | 37.5 |
| Lao PDR | 127,297 | 221,761 | 79 | 206 | 222,046 | 143,166 | 9.1 | 74.4 |
| Malaysia | 62,853 | 65,169 | 4,819 | 125 | 70,113 | 24,565 | 2.9 | 11.6 |
| Myanmar | 2,907 | 2,581 | 364 | 140 | 3,085 | 1,316 | 0.1 | 6.1 |
| Philippines | 55,570 | 63,268 | 3,908 | 472 | 67,648 | 39,897 | 2.8 | 21.7 |
| Singapore | 27,897 | 28,793 | 1,358 | 96 | 30,247 | 10,381 | 1.2 | 8.4 |
| Thailand | 105,393 | 122,174 | 5,476 | 2,259 | 129,909 | 54,699 | 5.3 | 23.3 |
| Vietnam | 453,894 | 501,736 | 4,694 | 1,770 | 508,200 | 234,895 | 20.9 | 12.0 |
| North-East Asia | 590,162 | 645,023 | 57,183 | 3,477 | 705,683 | 329,851 | 29.0 | 19.6 |
| China (RPC) | 179,251 | 232,189 | 33,988 | 1,329 | 267,506 | 126,935 | 11.0 | 49.2 |
| Hong Kong SAR | 4,702 | 3,795 | 102 | 9 | 3,906 | 1,922 | 0.2 | -16.9 |
| Japan | 95,877 | 101,375 | 6,509 | 1,087 | 108,971 | 44,979 | 4.5 | 13.7 |
| Korea (ROK) | 256,315 | 257,706 | 9,648 | 962 | 268,316 | 131,676 | 11.0 | 4.7 |
| Mongolia | 226 | 203 | 18 | 21 | 242 | 112 | 0.0 | 7.1 |
| Taiwan, China | 53,791 | 49,755 | 6,918 | 69 | 56,742 | 24,227 | 2.3 | 5.5 |
| Southern Asia | 13,437 | 13,303 | 2,297 | 532 | 16,132 | 4,173 | 0.7 | 20.1 |
| Afghanistan | 88 | 203 | 1 | 10 | 214 | 21 | 0.0 | 143.2 |
| Bangladesh | 690 | 808 | 142 | 76 | 1,026 | 117 | 0.0 | 48.7 |
| Bhutan | 93 | 36 | 7 | 10 | 53 | 13 | 0.0 | -43.0 |
| India | 10,200 | 10,717 | 1,562 | 268 | 12,547 | 3,519 | 0.5 | 23.0 |
| Nepal | 802 | 593 | 142 | 90 | 825 | 203 | 0.0 | 2.9 |
| Pakistan | 717 | 342 | 220 | 42 | 604 | 99 | 0.0 | -15.8 |
| Srilanka | 847 | 604 | 223 | 36 | 863 | 201 | 0.0 | 1.9 |
| Western Asia | 1,465 | 1,826 | 144 | 10 | 1,980 | 1,082 | 0.1 | 35.2 |
| Kazakhstan | 1,121 | 1,485 | 124 | 9 | 1,618 | 855 | 0.1 | 44.3 |
| Uzbekistan | 344 | 341 | 20 | 1 | 362 | 227 | 0.0 | 5.2 |
| Oceania | 77,359 | 79,364 | 4,049 | 1,125 | 84,538 | 36,763 | 3.5 | 9.3 |
| Australia | 67,202 | 69,095 | 3,437 | 986 | 73,518 | 32,118 | 3.0 | 9.4 |
| Fiji | 58 | 51 | 6 | 7 | 64 | 20 | 0.0 | 10.3 |
| New Zealand | 10,099 | 10,218 | 606 | 132 | 10,956 | 4,625 | 0.5 | 8.5 |
| Other Asia & the Pacific | 3,249 | 1,976 | 251 | 185 | 2,412 | 995 | 0.1 | -25.8 |
| Europe | 350,252 | 383,492 | 13,249 | 4,673 | 401,414 | 174,138 | 16.5 | 14.6 |
| Northern Europe | 96,888 | 102,132 | 4,155 | 1,071 | 107,358 | 42,603 | 4.4 | 10.8 |
| Denmark | 6,189 | 6,706 | 178 | 79 | 6,963 | 2,916 | 0.3 | 12.5 |
| Finland | 3,937 | 3,975 | 149 | 58 | 4,182 | 1,469 | 0.2 | 6.2 |
| Iceland | 372 | 453 | 27 | 7 | 487 | 207 | 0.0 | 30.9 |
| Ireland | 5,200 | 5,695 | 231 | 54 | 5,980 | 2,517 | 0.2 | 15.0 |
| Norway | 5,447 | 5,865 | 151 | 78 | 6,094 | 2,540 | 0.3 | 11.9 |
| Sweden | 9,870 | 10,238 | 310 | 154 | 10,702 | 4,077 | 0.4 | 8.4 |
| United Kingdom | 65,873 | 69,200 | 3,109 | 641 | 72,950 | 28,877 | 3.0 | 10.7 |
| Western Europe | 150,929 | 157,308 | 6,673 | 2,843 | 166,824 | 69,301 | 6.9 | 10.5 |
| Austria | 4,956 | 5,224 | 143 | 70 | 5,437 | 2,145 | 0.2 | 9.7 |
| Belgium | 8,649 | 8,812 | 408 | 152 | 9,372 | 3,741 | 0.4 | 8.4 |
| France | 70,866 | 70,458 | 4,040 | 1,700 | 76,198 | 32,433 | 3.1 | 7.5 |
| Germany | 41,216 | 45,006 | 1,161 | 546 | 46,713 | 18,934 | 1.9 | 13.3 |
| Luxembourg | 243 | 296 | 7 | 3 | 306 | 130 | 0.0 | 25.9 |
| Monaco | 30 | 56 | 6 | 1 | 63 | 29 | 0.0 | 110.0 |
| Netherlands | 14,064 | 16,128 | 540 | 204 | 16,872 | 7,055 | 0.7 | 20.0 |
| Switzerland | 10,905 | 11,328 | 368 | 167 | 11,863 | 4,834 | 0.5 | 8.8 |
| Central / Eastern Europe | 71,015 | 93,090 | 1,231 | 278 | 94,599 | 49,094 | 3.9 | 33.2 |
| Bulgaria | 354 | 484 | 8 | 7 | 499 | 228 | 0.0 | 41.0 |
| Czech Republic | 2,494 | 2,840 | 25 | 28 | 2,893 | 1,199 | 0.1 | 16.0 |
| Estonia | 526 | 725 | 28 | 22 | 775 | 307 | 0.0 | 47.3 |
| Hungary | 1,524 | 1,877 | 24 | 13 | 1,914 | 829 | 0.1 | 25.6 |
| Lithuania | 659 | 990 | 11 | 2 | 1,003 | 488 | 0.0 | 52.2 |
| Poland | 5,256 | 7,017 | 56 | 37 | 7,110 | 3,487 | 0.3 | 35.3 |
| Romania | 692 | 724 | 50 | 4 | 778 | 397 | 0.0 | 12.4 |
| Russian Federation | 55,763 | 73,719 | 909 | 126 | 74,754 | 39,751 | 3.1 | 34.1 |
| Slovakia | 969 | 1,340 | 62 | 24 | 1,426 | 596 | 0.1 | 47.2 |
| Ukraine | 2,778 | 3,374 | 58 | 15 | 3,447 | 1,812 | 0.1 | 24.1 |

International Tourist Arrivals to Cambodia by Country of Residence in January - July 2013

(by all mean of transportations)

| Regions Country of Residence | 2012 | | 2013 | | | share | | change | |
|---------------------------------|------------------|------------------|------------------|---------------|------------------|------------------|--------------|-------------|----------|
| | | | Purpose of Visit | | | Total | Female | (%) | (%) |
| | | | Holiday | Business | Other | | | 2013* | 2013*/12 |
| GRAND TOTAL | 2,040,934 | 2,304,246 | 108,019 | 19,095 | 2,431,360 | 1,136,032 | 100.0 | 19.1 | |
| Southern Europe | 28,246 | 29,197 | 1,029 | 354 | 30,580 | 12,308 | 1.3 | 8.3 | |
| Croatia | 383 | 423 | 13 | 7 | 443 | 208 | 0.0 | 15.7 | |
| Greece | 554 | 613 | 19 | 3 | 635 | 214 | 0.0 | 14.6 | |
| Italy | 11,435 | 12,283 | 429 | 156 | 12,868 | 4,707 | 0.5 | 12.5 | |
| Portugal | 1,415 | 1,968 | 75 | 16 | 2,059 | 971 | 0.1 | 45.5 | |
| Serbia | 210 | 316 | 22 | 13 | 351 | 182 | 0.0 | 67.1 | |
| Slovenia | 581 | 690 | 36 | 7 | 733 | 313 | 0.0 | 26.2 | |
| Spain | 11,986 | 10,675 | 242 | 113 | 11,030 | 4,967 | 0.5 | -8.0 | |
| Turkey | 1,682 | 2,229 | 193 | 39 | 2,461 | 746 | 0.1 | 46.3 | |
| Other Europe | 3,174 | 1,765 | 161 | 127 | 2,053 | 832 | 0.1 | -35.3 | |
| Americas | 147,966 | 151,094 | 7,350 | 3,514 | 161,958 | 71,511 | 6.7 | 9.5 | |
| Argentina | 3,184 | 4,055 | 22 | 35 | 4,112 | 2,074 | 0.2 | 29.1 | |
| Brazil | 3,007 | 4,027 | 34 | 29 | 4,090 | 1,959 | 0.2 | 36.0 | |
| Canada | 29,968 | 30,108 | 1,395 | 336 | 31,839 | 14,074 | 1.3 | 6.2 | |
| Chile | 1,912 | 2,593 | 60 | 16 | 2,669 | 1,372 | 0.1 | 39.6 | |
| Colombia | 828 | 951 | 32 | 19 | 1,002 | 475 | 0.0 | 21.0 | |
| Costa Rica | 167 | 185 | 6 | 4 | 195 | 104 | 0.0 | 16.8 | |
| Ecuador | 89 | 130 | 8 | 6 | 144 | 68 | 0.0 | 61.8 | |
| Mexico | 2,398 | 2,645 | 33 | 19 | 2,697 | 1,316 | 0.1 | 12.5 | |
| Peru | 325 | 343 | 23 | 9 | 375 | 178 | 0.0 | 15.4 | |
| United States | 103,813 | 104,525 | 5,613 | 2,933 | 113,071 | 49,034 | 4.7 | 8.9 | |
| Uruguay | 386 | 509 | 5 | 7 | 521 | 248 | 0.0 | 35.0 | |
| Other Americas | 1,889 | 1,023 | 119 | 101 | 1,243 | 609 | 0.1 | -34.2 | |
| Africa | 2,944 | 2,821 | 346 | 210 | 3,377 | 1,336 | 0.1 | 14.7 | |
| Cameroon | 127 | 64 | 3 | 19 | 86 | 11 | 0.0 | -32.3 | |
| Congo | 38 | 26 | 3 | 6 | 35 | 9 | 0.0 | -7.9 | |
| Ghana | 100 | 91 | 7 | 8 | 106 | 34 | 0.0 | 6.0 | |
| Kenya | 134 | 130 | 13 | 36 | 179 | 90 | 0.0 | 33.6 | |
| Liberia | 66 | 25 | 0 | 1 | 26 | 6 | 0.0 | -60.6 | |
| Nigeria | 338 | 175 | 159 | 32 | 366 | 38 | 0.0 | 8.3 | |
| Sudan | 29 | 27 | 2 | 3 | 32 | 3 | 0.0 | 10.3 | |
| South Africa | 1,791 | 2,020 | 125 | 55 | 2,200 | 993 | 0.1 | 22.8 | |
| Uganda | 43 | 30 | 2 | 10 | 42 | 17 | 0.0 | -2.3 | |
| Other Africa | 278 | 233 | 32 | 40 | 305 | 135 | 0.0 | 9.7 | |
| Middle East | 6,391 | 6,259 | 247 | 124 | 6,630 | 2,265 | 0.3 | 3.7 | |
| Egypt | 106 | 139 | 34 | 11 | 184 | 39 | 0.0 | 73.6 | |
| Iran | 385 | 383 | 16 | 3 | 402 | 111 | 0.0 | 4.4 | |
| Iraq | 55 | 87 | 0 | 6 | 93 | 25 | 0.0 | 69.1 | |
| Israel | 4,799 | 4,377 | 175 | 28 | 4,580 | 1,888 | 0.2 | -4.6 | |
| Kuwait | 410 | 642 | 1 | 14 | 657 | 20 | 0.0 | 60.2 | |
| Oman | 79 | 135 | 0 | 2 | 137 | 11 | 0.0 | 73.4 | |
| Palestine | 18 | 55 | 2 | 6 | 63 | 10 | 0.0 | 250.0 | |
| Qatar | 51 | 70 | 0 | 9 | 79 | 37 | 0.0 | 54.9 | |
| Saudi Arabia | 49 | 89 | 2 | 6 | 97 | 17 | 0.0 | 98.0 | |
| United Arab Emirates | 135 | 71 | 0 | 0 | 71 | 6 | 0.0 | -47.4 | |
| Yemen | 106 | 64 | 5 | 13 | 82 | 10 | 0.0 | -22.6 | |
| Other Middle East | 198 | 147 | 12 | 26 | 185 | 91 | 0.0 | -6.6 | |

Remark:

- Cambodian outbound tourist departures: 509,050
- International outbound tourist departures: 2,436,086

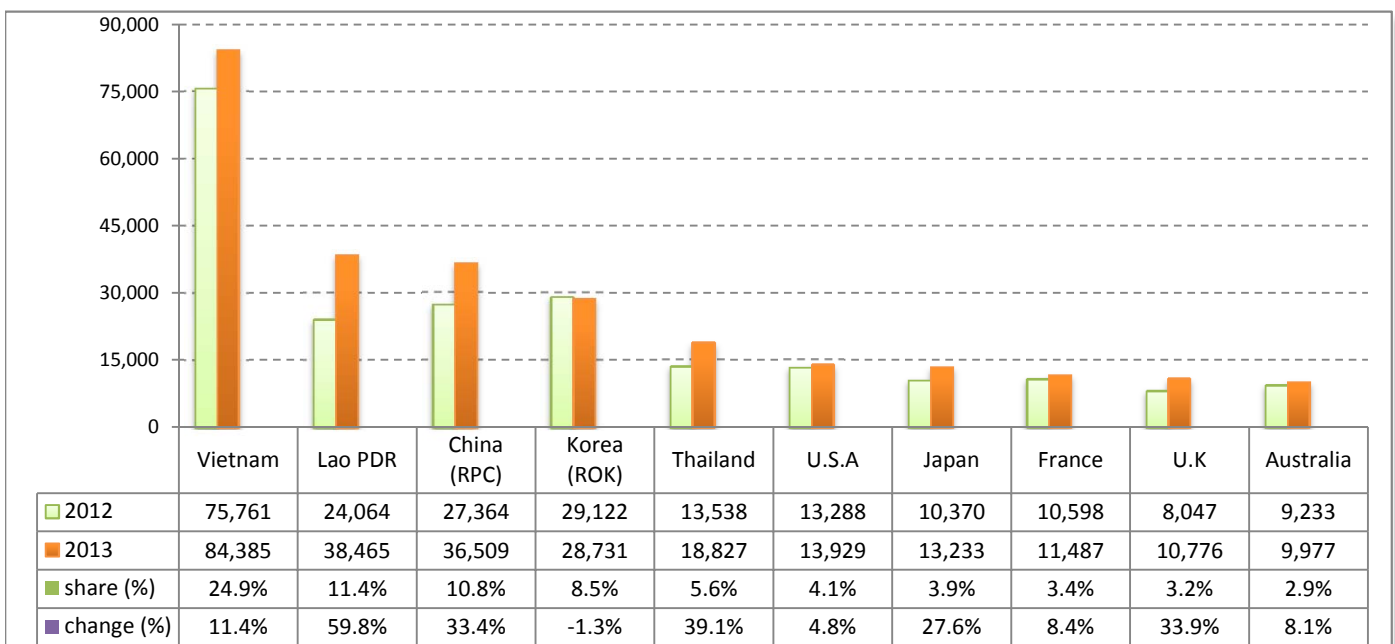
I. International tourist arrivals to Cambodia in July 2013 was:

338,761

II. Mode of arrivals

| | arrivals | share (%) |
|----------------------------|----------------|--------------|
| Air | 144,649 | 42.7 |
| Phnom Penh Int'l Airport | 68,078 | 20.1 |
| Siem Reap Int'l Airport | 76,571 | 22.6 |
| Land and Water ways | 194,112 | 57.3 |
| Land | 190,235 | 56.2 |
| Waterway | 3,877 | 1.1 |
| Total | 338,761 | 100.0 |

III. Top ten markets arrivals in July 2013



IV. International tourist arrivals to Cambodia in July 2013

| | Inbound tourism | | share (%) | | change (%) |
|----------------------------|-----------------|----------------|--------------|--------------|-------------|
| | 2012 | 2013 | 2012 | 2013 | 2013*/12 |
| Air | 126,405 | 144,649 | 44.5 | 42.7 | 14.4 |
| Phnom Penh Int'l Airport | 60,057 | 68,078 | 21.1 | 20.1 | 13.4 |
| Siem Reap Int'l Airport | 66,348 | 76,571 | 23.3 | 22.6 | 15.4 |
| Land and Water ways | 157,877 | 194,112 | 55.5 | 57.3 | 23.0 |
| Land | 154,519 | 190,235 | 54.4 | 56.2 | 23.1 |
| Waterway | 3,358 | 3,877 | 1.2 | 1.1 | 15.5 |
| Total | 284,282 | 338,761 | 100.0 | 100.0 | 19.2 |

V. Remark: Percentage share of international tourist arrivals at destinations in July 2013

| | Arrivals | | share (%) | | change (%) |
|---------------------------------|----------------|----------------|--------------|--------------|-------------|
| | 2012 | 2013 | 2012 | 2013 | 2013*/12 |
| Phnom Penh & Other Destinations | 140,818 | 179,517 | 49.5 | 53.0 | 27.5 |
| Siem Reap Province | 143,464 | 159,244 | 50.5 | 47.0 | 11.0 |
| Total | 284,282 | 338,761 | 100.0 | 100.0 | 19.2 |

VI. Outbound tourism in July 2013

| | Outbound tourism | | change (%) |
|---------------------------------|------------------|---------|------------|
| | 2012 | 2013 | 2013*/12 |
| Cambodian outbound tourists | 66,070 | 67,758 | 2.6 |
| International outbound tourists | 246,741 | 333,425 | 35.1 |

International Tourist Arrivals to Cambodia by Country of Residence in July 2013

(by all mean of transportations)

| Regions Country of Residence | 2012 | 2013 | | | Total | Female | share | change |
|---------------------------------|----------------|------------------|---------------|--------------|----------------|----------------|--------------|-------------|
| | | Purpose of Visit | | | | | (%) | (%) |
| | | Holiday | Business | Other | | | 2013* | 2013*/12 |
| GRAND TOTAL | 284,282 | 320,592 | 15,488 | 2,681 | 338,761 | 158,943 | 100.0 | 19.2 |
| Asia and the Pacific | 223,189 | 254,221 | 12,417 | 1,465 | 268,103 | 127,377 | 79.1 | 20.1 |
| ASEAN (South-East Asia) | 135,329 | 163,445 | 3,325 | 684 | 167,454 | 82,285 | 49.4 | 23.7 |
| Brunei Darussalam | 77 | 78 | 0 | 3 | 81 | 42 | 0.0 | 5.2 |
| Indonesia | 1,729 | 1,912 | 354 | 24 | 2,290 | 641 | 0.7 | 32.4 |
| Lao PDR | 24,064 | 38,434 | 6 | 25 | 38,465 | 24,705 | 11.4 | 59.8 |
| Malaysia | 9,131 | 8,764 | 675 | 17 | 9,456 | 3,182 | 2.8 | 3.6 |
| Myanmar | 368 | 366 | 58 | 8 | 432 | 156 | 0.1 | 17.4 |
| Philippines | 7,048 | 9,053 | 505 | 90 | 9,648 | 5,637 | 2.8 | 36.9 |
| Singapore | 3,613 | 3,674 | 177 | 19 | 3,870 | 1,248 | 1.1 | 7.1 |
| Thailand | 13,538 | 17,664 | 820 | 343 | 18,827 | 7,799 | 5.6 | 39.1 |
| Vietnam | 75,761 | 83,500 | 730 | 155 | 84,385 | 38,875 | 24.9 | 11.4 |
| North-East Asia | 74,891 | 77,676 | 8,144 | 520 | 86,340 | 39,253 | 25.5 | 15.3 |
| China (RPC) | 27,364 | 31,593 | 4,703 | 213 | 36,509 | 17,257 | 10.8 | 33.4 |
| Hong Kong SAR | 566 | 308 | 14 | 0 | 322 | 142 | 0.1 | -43.1 |
| Japan | 10,370 | 12,100 | 999 | 134 | 13,233 | 5,032 | 3.9 | 27.6 |
| Korea (ROK) | 29,122 | 27,120 | 1,495 | 116 | 28,731 | 13,562 | 8.5 | -1.3 |
| Mongolia | 21 | 24 | 2 | 6 | 32 | 16 | 0.0 | 52.4 |
| Taiwan, China | 7,448 | 6,531 | 931 | 51 | 7,513 | 3,244 | 2.2 | 0.9 |
| Southern Asia | 1,722 | 1,807 | 388 | 62 | 2,257 | 535 | 0.7 | 31.1 |
| Afghanistan | 18 | 27 | 0 | 1 | 28 | 2 | 0.0 | 55.6 |
| Bangladesh | 98 | 90 | 16 | 6 | 112 | 10 | 0.0 | 14.3 |
| Bhutan | 9 | 4 | 1 | 0 | 5 | 2 | 0.0 | -44.4 |
| India | 1,310 | 1,524 | 275 | 38 | 1,837 | 466 | 0.5 | 40.2 |
| Nepal | 65 | 59 | 27 | 12 | 98 | 26 | 0.0 | 50.8 |
| Pakistan | 86 | 47 | 32 | 2 | 81 | 14 | 0.0 | -5.8 |
| Srilanka | 136 | 56 | 37 | 3 | 96 | 15 | 0.0 | -29.4 |
| Western Asia | 152 | 192 | 23 | 0 | 215 | 121 | 0.1 | 41.4 |
| Kazakhstan | 108 | 157 | 15 | 0 | 172 | 97 | 0.1 | 59.3 |
| Uzbekistan | 44 | 35 | 8 | 0 | 43 | 24 | 0.0 | -2.3 |
| Oceania | 10,707 | 10,998 | 524 | 170 | 11,692 | 5,120 | 3.5 | 9.2 |
| Australia | 9,233 | 9,391 | 445 | 141 | 9,977 | 4,375 | 2.9 | 8.1 |
| Fiji | 11 | 7 | 1 | 2 | 10 | 3 | 0.0 | -9.1 |
| New Zealand | 1,463 | 1,600 | 78 | 27 | 1,705 | 742 | 0.5 | 16.5 |
| Other Asia & the Pacific | 388 | 103 | 13 | 29 | 145 | 63 | 0.0 | -62.6 |
| Europe | 41,936 | 47,907 | 1,895 | 615 | 50,417 | 22,651 | 14.9 | 20.2 |
| Northern Europe | 11,500 | 14,354 | 603 | 150 | 15,107 | 6,466 | 4.5 | 31.4 |
| Denmark | 861 | 1,008 | 19 | 17 | 1,044 | 496 | 0.3 | 21.3 |
| Finland | 248 | 246 | 14 | 4 | 264 | 98 | 0.1 | 6.5 |
| Iceland | 87 | 56 | 1 | 1 | 58 | 20 | 0.0 | -33.3 |
| Ireland | 1,051 | 1,275 | 39 | 4 | 1,318 | 657 | 0.4 | 25.4 |
| Norway | 640 | 829 | 18 | 3 | 850 | 321 | 0.3 | 32.8 |
| Sweden | 566 | 749 | 31 | 17 | 797 | 283 | 0.2 | 40.8 |
| United Kingdom | 8,047 | 10,191 | 481 | 104 | 10,776 | 4,591 | 3.2 | 33.9 |
| Western Europe | 20,497 | 21,483 | 999 | 370 | 22,852 | 10,035 | 6.7 | 11.5 |
| Austria | 487 | 505 | 21 | 11 | 537 | 220 | 0.2 | 10.3 |
| Belgium | 1,759 | 2,056 | 55 | 30 | 2,141 | 1,004 | 0.6 | 21.7 |
| France | 10,598 | 10,662 | 634 | 191 | 11,487 | 5,092 | 3.4 | 8.4 |
| Germany | 3,546 | 3,568 | 170 | 73 | 3,811 | 1,496 | 1.1 | 7.5 |
| Luxembourg | 26 | 38 | 0 | 0 | 38 | 19 | 0.0 | 46.2 |
| Monaco | 6 | 13 | 3 | 0 | 16 | 6 | 0.0 | 166.7 |
| Netherlands | 2,749 | 3,316 | 65 | 35 | 3,416 | 1,571 | 1.0 | 24.3 |
| Switzerland | 1,326 | 1,325 | 51 | 30 | 1,406 | 627 | 0.4 | 6.0 |
| Central / Eastern Europe | 4,790 | 6,868 | 146 | 30 | 7,044 | 3,809 | 2.1 | 47.1 |
| Bulgaria | 34 | 18 | 1 | 2 | 21 | 7 | 0.0 | -38.2 |
| Czech Republic | 173 | 202 | 4 | 2 | 208 | 88 | 0.1 | 20.2 |
| Estonia | 45 | 22 | 1 | 2 | 25 | 9 | 0.0 | -44.4 |
| Hungary | 111 | 107 | 2 | 2 | 111 | 46 | 0.0 | 0.0 |
| Lithuania | 33 | 39 | 2 | 0 | 41 | 20 | 0.0 | 24.2 |
| Poland | 380 | 453 | 5 | 5 | 463 | 216 | 0.1 | 21.8 |
| Romania | 101 | 56 | 8 | 2 | 66 | 37 | 0.0 | -34.7 |
| Russian Federation | 3,604 | 5,696 | 108 | 10 | 5,814 | 3,243 | 1.7 | 61.3 |
| Slovakia | 91 | 100 | 8 | 0 | 108 | 47 | 0.0 | 18.7 |
| Ukraine | 218 | 175 | 7 | 5 | 187 | 96 | 0.1 | -14.2 |

International Tourist Arrivals to Cambodia by Country of Residence in July 2013

(by all mean of transportations)

| Regions Country of Residence | 2012 | 2013 | | | Total | Female | share | change |
|---------------------------------|----------------|------------------|---------------|--------------|----------------|----------------|--------------|-------------|
| | | Purpose of Visit | | | | | (%) | (%) |
| | | Holiday | Business | Other | | | 2013* | 2013*/12 |
| GRAND TOTAL | 284,282 | 320,592 | 15,488 | 2,681 | 338,761 | 158,943 | 100.0 | 19.2 |
| Southern Europe | 4,615 | 5,127 | 136 | 46 | 5,309 | 2,301 | 1.6 | 15.0 |
| Croatia | 45 | 31 | 1 | 1 | 33 | 13 | 0.0 | -26.7 |
| Greece | 77 | 46 | 0 | 0 | 46 | 18 | 0.0 | -40.3 |
| Italy | 1,244 | 1,420 | 55 | 22 | 1,497 | 571 | 0.4 | 20.3 |
| Portugal | 182 | 247 | 16 | 1 | 264 | 113 | 0.1 | 45.1 |
| Serbia | 22 | 24 | 1 | 3 | 28 | 7 | 0.0 | 27.3 |
| Slovenia | 51 | 83 | 1 | 0 | 84 | 35 | 0.0 | 64.7 |
| Spain | 2,834 | 3,069 | 39 | 16 | 3,124 | 1,494 | 0.9 | 10.2 |
| Turkey | 160 | 207 | 23 | 3 | 233 | 50 | 0.1 | 45.6 |
| Other Europe | 534 | 75 | 11 | 19 | 105 | 40 | 0.0 | -80.3 |
| Americas | 18,039 | 17,559 | 1,105 | 568 | 19,232 | 8,582 | 5.7 | 6.6 |
| Argentina | 171 | 205 | 1 | 14 | 220 | 102 | 0.1 | 28.7 |
| Brazil | 227 | 364 | 5 | 5 | 374 | 159 | 0.1 | 64.8 |
| Canada | 3,246 | 3,173 | 174 | 56 | 3,403 | 1,517 | 1.0 | 4.8 |
| Chile | 170 | 298 | 6 | 5 | 309 | 174 | 0.1 | 81.8 |
| Colombia | 99 | 149 | 7 | 6 | 162 | 71 | 0.0 | 63.6 |
| Costa Rica | 26 | 25 | 2 | 0 | 27 | 15 | 0.0 | 3.8 |
| Ecuador | 30 | 21 | 2 | 0 | 23 | 11 | 0.0 | -23.3 |
| Mexico | 523 | 627 | 3 | 9 | 639 | 297 | 0.2 | 22.2 |
| Peru | 46 | 38 | 3 | 3 | 44 | 22 | 0.0 | -4.3 |
| United States | 13,288 | 12,580 | 894 | 455 | 13,929 | 6,163 | 4.1 | 4.8 |
| Uruguay | 9 | 13 | 0 | 1 | 14 | 6 | 0.0 | 55.6 |
| Other Americas | 204 | 66 | 8 | 14 | 88 | 45 | 0.0 | -56.9 |
| Africa | 439 | 335 | 38 | 24 | 397 | 150 | 0.1 | -9.6 |
| Cameroon | 15 | 10 | 0 | 3 | 13 | 0 | 0.0 | -13.3 |
| Congo | 3 | 5 | 1 | 0 | 6 | 2 | 0.0 | 100.0 |
| Ghana | 6 | 0 | 0 | 1 | 1 | 0 | 0.0 | -83.3 |
| Kenya | 15 | 16 | 2 | 11 | 29 | 18 | 0.0 | 93.3 |
| Liberia | 1 | 1 | 0 | 0 | 1 | 0 | 0.0 | 0.0 |
| Nigeria | 56 | 30 | 18 | 1 | 49 | 13 | 0.0 | -12.5 |
| Sudan | 6 | 4 | 0 | 1 | 5 | 0 | 0.0 | -16.7 |
| South Africa | 256 | 248 | 15 | 3 | 266 | 104 | 0.1 | 3.9 |
| Uganda | 10 | 2 | 1 | 1 | 4 | 2 | 0.0 | -60.0 |
| Other Africa | 71 | 19 | 1 | 3 | 23 | 11 | 0.0 | -67.6 |
| Middle East | 679 | 570 | 33 | 9 | 612 | 183 | 0.2 | -9.9 |
| Egypt | 16 | 24 | 2 | 0 | 26 | 9 | 0.0 | 62.5 |
| Iran | 47 | 52 | 1 | 1 | 54 | 10 | 0.0 | 14.9 |
| Iraq | 4 | 11 | 0 | 0 | 11 | 1 | 0.0 | 175.0 |
| Israel | 425 | 390 | 29 | 2 | 421 | 148 | 0.1 | -0.9 |
| Kuwait | 61 | 39 | 0 | 0 | 39 | 0 | 0.0 | -36.1 |
| Oman | 5 | 13 | 0 | 1 | 14 | 2 | 0.0 | 180.0 |
| Palestine | 4 | 4 | 0 | 0 | 4 | 0 | 0.0 | 0.0 |
| Qatar | 4 | 1 | 0 | 1 | 2 | 0 | 0.0 | -50.0 |
| Saudi Arabia | 4 | 2 | 0 | 1 | 3 | 0 | 0.0 | -25.0 |
| United Arab Emirates | 19 | 7 | 0 | 0 | 7 | 0 | 0.0 | -63.2 |
| Yemen | 60 | 10 | 0 | 0 | 10 | 3 | 0.0 | -83.3 |
| Other Middle East | 30 | 17 | 1 | 3 | 21 | 10 | 0.0 | -30.0 |

Remark:

- Cambodian outbound tourist departures: 67,758
- International outbound tourist departures: 333,425

COMPILED BY:

1. Mr. Kong Sopheareak

Director
Statistics & Tourism Information Department
Fax: +855 23 885003
E-mail: kong@mot.gov.kh

2. Mr. Horth Vanny

Chief of Tourism Statistics Office
Compile and data analysis
Tel.: +855 12 827664