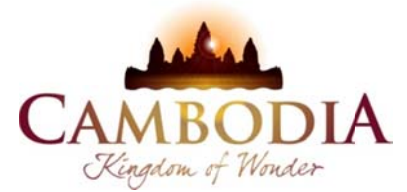




KINGDOM OF CAMBODIA
NATION RELIGION KING



TOURISM STATISTICS REPORT

2013

MINISTRY OF TOURISM

Statistics and Tourism Information Department

No. A3, Street 169, Sangkat Veal Vong, Khan 7 Makara, Phnom Penh, Cambodia.

Fax: +855 23 885003

E-mail: kong@mot.gov.kh

Web site: www.mot.gov.kh

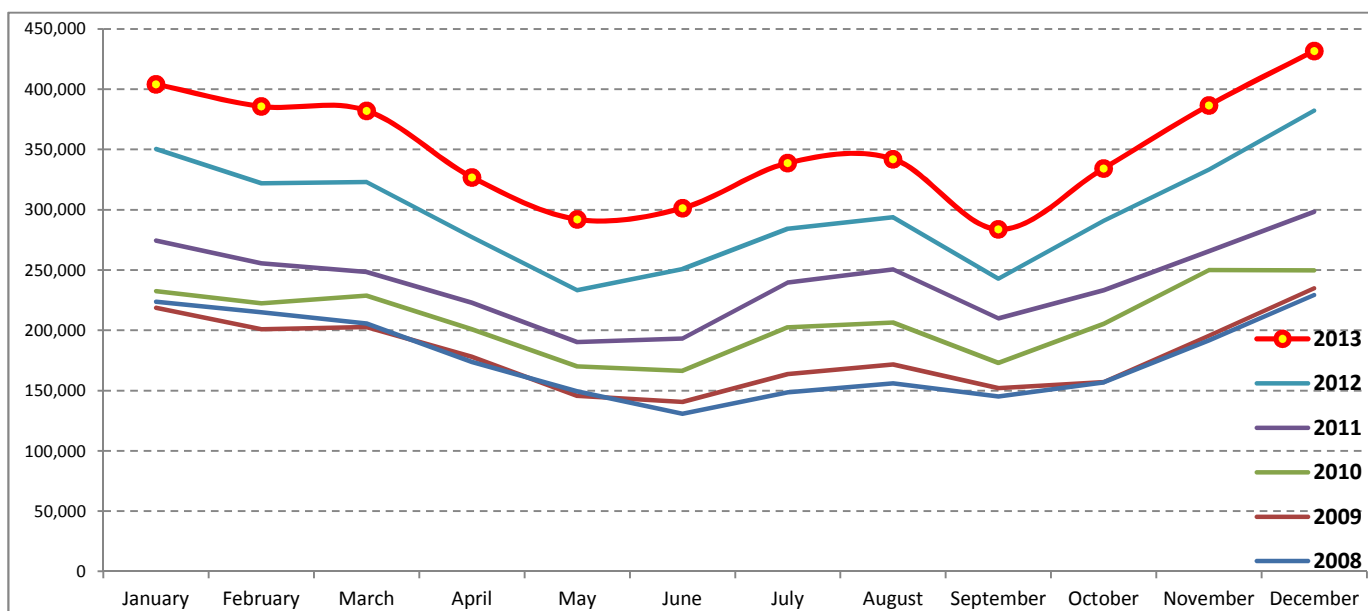
Tourism Highlights

International Tourist Arrivals, Average Length of Stay, Hotels Occupancy & Tourism Receipts 1993 - 2013

Years	Int'l Tourist Arrivals		Average Length of Stay (Days)	Hotels Occupancy (%)	Tourism Receipts (Million US\$)
	Number	Change (%)			
1993	118,183	-	N/A	N/A	N/A
1994	176,617	49.4	N/A	N/A	N/A
1995	219,680	24.4	8.00	37.00	100
1996	260,489	18.6	7.50	40.00	118
1997	218,843	-16.0	6.40	30.00	103
1998	286,524	30.9	5.20	40.00	166
1999	367,743	28.3	5.50	44.00	190
2000	466,365	26.8	5.50	45.00	228
2001	604,919	29.7	5.50	48.00	304
2002	786,524	30.0	5.80	50.00	379
2003	701,014	-10.9	5.50	50.00	347
2004	1,055,202	50.5	6.30	52.00	578
2005	1,421,615	34.7	6.30	52.00	832
2006	1,700,041	19.6	6.50	54.79	1,049
2007	2,015,128	18.5	6.50	54.79	1,400
2008	2,125,465	5.5	6.65	62.68	1,595
2009	2,161,577	1.7	6.45	63.57	1,561
2010	2,508,289	16.0	6.45	65.74	1,786
2011	2,881,862	14.9	6.50	66.15	1,912
2012	3,584,307	24.4	6.30	68.49	2,210
2013	4,210,165	17.5	6.75	69.53	2,547

International tourist arrivals to Cambodia

Destination	Months	2008	2009	2010	2011	2012	2013	change (%) 2013*/12
Cambodia	Q1	644,205	622,288	683,692	778,467	995,210	1,172,072	17.8
<i>International tourist arrivals by all means of transportations</i>	January	223,581	218,691	232,590	274,471	350,257	404,106	15.4
	February	214,902	200,789	222,354	255,499	321,870	385,760	19.8
	March	205,722	202,808	228,748	248,497	323,083	382,206	18.3
	Q2	454,031	464,230	537,464	606,562	761,442	920,527	20.9
	April	173,903	177,955	200,965	223,032	277,304	327,000	17.9
	May	149,275	145,564	170,164	190,258	233,220	292,115	25.3
	June	130,853	140,711	166,335	193,272	250,918	301,412	20.1
	Q3	449,693	487,422	582,024	699,760	820,888	964,612	17.5
	July	148,449	163,817	202,349	239,527	284,282	338,761	19.2
	August	156,098	171,668	206,563	250,429	293,859	342,064	16.4
	September	145,146	151,937	173,112	209,804	242,747	283,787	16.9
	Q4	577,536	587,637	705,109	797,073	1,006,767	1,152,954	14.5
	October	156,718	157,105	205,515	233,190	290,959	334,410	14.9
	November	191,549	195,570	249,892	265,539	333,482	386,737	16.0
	December	229,269	234,962	249,702	298,344	382,326	431,807	12.9
	Total	2,125,465	2,161,577	2,508,289	2,881,862	3,584,307	4,210,165	17.5



Source: Statistics and ICT Department, MOT

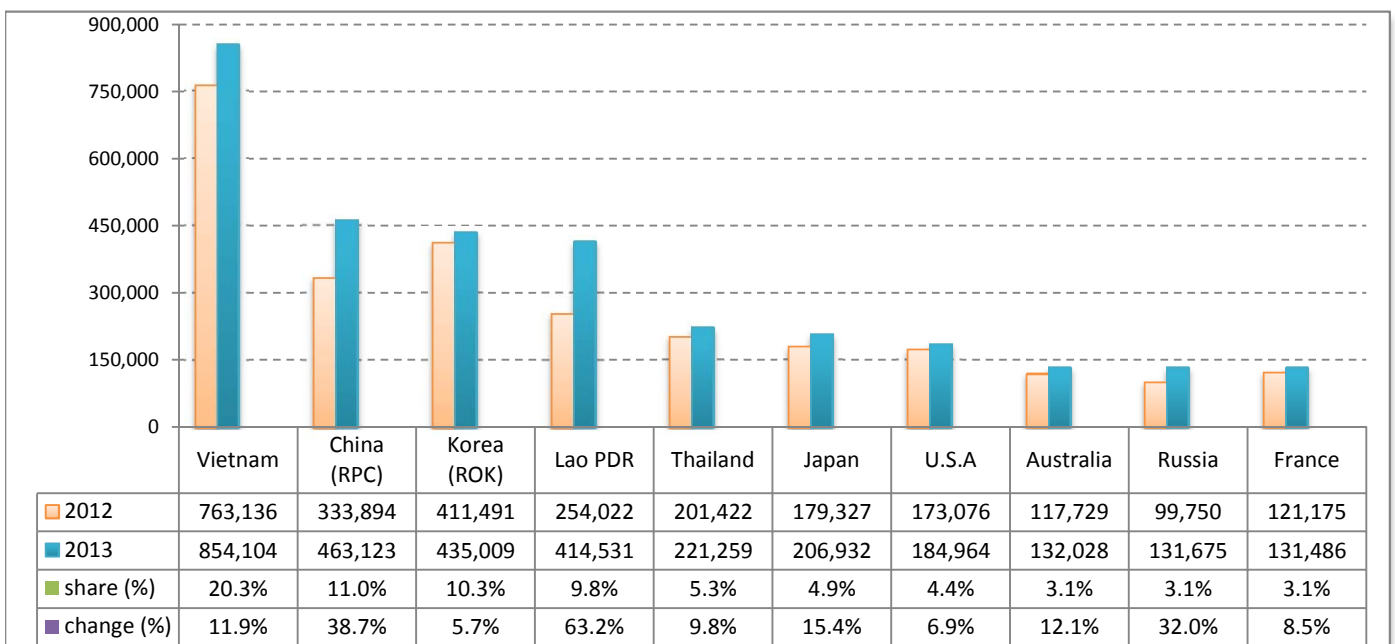
Executive Summary Report in 2013

I. International tourist arrivals to Cambodia in January - December 2013 was: **4,210,165**

II. Mode of arrivals

	arrivals	share (%)
Air	2,017,658	47.9
Phnom Penh Int'l Airport	836,377	19.9
Siem Reap Int'l Airport	1,181,281	28.1
Land and Water ways	2,192,507	52.1
Land	2,117,454	50.3
Waterway	75,053	1.8
Total	4,210,165	100.0

III. Top ten markets arrivals in January - December 2013



IV. International tourist arrivals to Cambodia in January - December 2013

	Inbound tourism		share (%)		change (%)
	2012	2013	2012	2013	2013*/12
Air	1,722,083	2,017,658	48.0	47.9	17.2
Phnom Penh Int'l Airport	716,584	836,377	20.0	19.9	16.7
Siem Reap Int'l Airport	1,005,499	1,181,281	28.1	28.1	17.5
Land and Water ways	1,862,224	2,192,507	52.0	52.1	17.7
Land	1,785,726	2,117,454	49.8	50.3	18.6
Waterway	76,498	75,053	2.1	1.8	-1.9
Total	3,584,307	4,210,165	100.0	100.0	17.5

V. Remark: Percentage share of international tourist arrivals at destinations in January - December 2013

	Arrivals		share (%)		change (%)
	2012	2013	2012	2013	2013*/12
Phnom Penh & Other Destinations	1,520,971	1,972,879	42.4	46.9	29.7
Siem Reap Province	2,063,336	2,237,286	57.6	53.1	8.4
Total	3,584,307	4,210,165	100.0	100.0	17.5

VI. Outbound tourism in January - December 2013

	Outbound tourism		change (%)
	2012	2013	2013*/12
Cambodian outbound tourists	792,398	871,646	10.0
International outbound tourists	3,504,584	4,173,597	19.1

International Tourist Arrivals to Cambodia by Country of Residence in January - December 2013

(by all mean of transportations)

Regions Country of Residence	2012		2013			share		change	
			Purpose of Visit			Total	Female	2013*	2013*/12
			Holiday	Business	Other				
GRAND TOTAL	3,584,307	3,991,899	185,584	32,682	4,210,165	1,981,795	100.0	17.5	
Asia and the Pacific	2,712,316	3,064,021	148,913	18,958	3,231,892	1,552,416	76.8	19.2	
ASEAN (South-East Asia)	1,514,267	1,782,194	40,331	8,982	1,831,507	907,875	43.5	21.0	
Brunei Darussalam	964	751	14	49	814	349	0.0	-15.6	
Indonesia	22,544	23,921	4,030	248	28,199	8,627	0.7	25.1	
Lao PDR	254,022	413,957	126	448	414,531	267,766	9.8	63.2	
Malaysia	116,764	122,365	8,115	224	130,704	46,707	3.1	11.9	
Myanmar	4,744	4,241	567	281	5,089	2,067	0.1	7.3	
Philippines	97,487	111,358	6,887	754	118,999	70,533	2.8	22.1	
Singapore	53,184	54,963	2,665	180	57,808	20,905	1.4	8.7	
Thailand	201,422	207,346	9,742	4,171	221,259	94,442	5.3	9.8	
Vietnam	763,136	843,292	8,185	2,627	854,104	396,479	20.3	11.9	
North-East Asia	1,026,152	1,107,570	96,630	6,804	1,211,004	566,132	28.8	18.0	
China (RPC)	333,894	404,245	55,975	2,903	463,123	221,249	11.0	38.7	
Hong Kong SAR	8,282	8,366	198	12	8,576	4,398	0.2	3.5	
Japan	179,327	193,141	11,784	2,007	206,932	87,717	4.9	15.4	
Korea (ROK)	411,491	416,632	16,656	1,721	435,009	211,555	10.3	5.7	
Mongolia	347	322	27	23	372	173	0.0	7.2	
Taiwan, China	92,811	84,864	11,990	138	96,992	41,040	2.3	4.5	
Southern Asia	24,704	24,763	4,145	1,002	29,910	7,978	0.7	21.1	
Afghanistan	154	242	3	28	273	23	0.0	77.3	
Bangladesh	1,367	1,243	228	140	1,611	199	0.0	17.8	
Bhutan	134	65	13	23	101	34	0.0	-24.6	
India	18,999	20,267	2,823	520	23,610	6,782	0.6	24.3	
Nepal	1,478	1,074	264	137	1,475	353	0.0	-0.2	
Pakistan	1,168	689	413	78	1,180	183	0.0	1.0	
Sri Lanka	1,404	1,183	401	76	1,660	404	0.0	18.2	
Western Asia	2,420	2,843	256	26	3,125	1,700	0.1	29.1	
Kazakhstan	1,842	2,286	207	18	2,511	1,340	0.1	36.3	
Uzbekistan	578	557	49	8	614	360	0.0	6.2	
Oceania	136,879	143,601	7,215	1,896	152,712	67,150	3.6	11.6	
Australia	117,729	124,246	6,111	1,671	132,028	58,345	3.1	12.1	
Fiji	106	82	15	10	107	38	0.0	0.9	
New Zealand	19,044	19,273	1,089	215	20,577	8,767	0.5	8.0	
Other Asia & the Pacific	7,894	3,050	336	248	3,634	1,581	0.1	-54.0	
Europe	611,359	666,922	23,523	7,712	698,157	307,271	16.6	14.2	
Northern Europe	160,447	169,064	7,206	1,793	178,063	70,957	4.2	11.0	
Denmark	10,013	10,039	318	128	10,485	4,281	0.2	4.7	
Finland	6,343	6,375	246	110	6,731	2,506	0.2	6.1	
Iceland	578	725	49	14	788	322	0.0	36.3	
Ireland	8,865	9,764	386	95	10,245	4,362	0.2	15.6	
Norway	8,251	9,086	288	108	9,482	3,869	0.2	14.9	
Sweden	16,215	15,663	525	225	16,413	6,255	0.4	1.2	
United Kingdom	110,182	117,412	5,394	1,113	123,919	49,362	2.9	12.5	
Western Europe	259,499	270,793	11,954	4,687	287,434	120,727	6.8	10.8	
Austria	8,148	8,782	211	98	9,091	3,739	0.2	11.6	
Belgium	14,762	15,188	732	251	16,171	6,491	0.4	9.5	
France	121,175	121,318	7,390	2,778	131,486	56,156	3.1	8.5	
Germany	72,537	78,641	2,013	911	81,565	33,929	1.9	12.4	
Luxembourg	474	551	14	6	571	239	0.0	20.5	
Monaco	55	96	6	1	103	55	0.0	87.3	
Netherlands	24,559	26,777	936	363	28,076	11,662	0.7	14.3	
Switzerland	17,789	19,440	652	279	20,371	8,456	0.5	14.5	
Central / Eastern Europe	127,171	162,735	2,240	477	165,452	87,267	3.9	30.1	
Bulgaria	696	929	16	16	961	475	0.0	38.1	
Czech Republic	4,064	4,672	121	52	4,845	2,018	0.1	19.2	
Estonia	1,022	1,299	40	27	1,366	557	0.0	33.7	
Hungary	2,537	2,886	36	25	2,947	1,291	0.1	16.2	
Lithuania	1,089	1,594	12	2	1,608	778	0.0	47.7	
Poland	9,994	12,357	89	61	12,507	6,235	0.3	25.1	
Romania	1,327	1,444	71	11	1,526	778	0.0	15.0	
Russian Federation	99,750	129,825	1,627	223	131,675	71,204	3.1	32.0	
Slovakia	1,693	1,960	98	40	2,098	860	0.0	23.9	
Ukraine	4,999	5,769	130	20	5,919	3,071	0.1	18.4	

International Tourist Arrivals to Cambodia by Country of Residence in January - December 2013

(by all mean of transportations)

Regions Country of Residence	2012		2013			share		change	
			Purpose of Visit			Total	Female	(%)	(%)
			Holiday	Business	Other			2013*	2013*/12
GRAND TOTAL	3,584,307	3,991,899	185,584	32,682	4,210,165	1,981,795	100.0	17.5	
Southern Europe	57,571	61,617	1,894	582	64,093	26,977	1.5	11.3	
Croatia	705	762	26	10	798	363	0.0	13.2	
Greece	1,073	1,085	39	11	1,135	394	0.0	5.8	
Italy	22,625	24,141	787	268	25,196	9,725	0.6	11.4	
Portugal	3,061	3,926	139	22	4,087	1,950	0.1	33.5	
Serbia	411	563	36	14	613	325	0.0	49.1	
Slovenia	939	1,152	61	8	1,221	514	0.0	30.0	
Spain	25,349	25,737	442	193	26,372	12,146	0.6	4.0	
Turkey	3,408	4,251	364	56	4,671	1,560	0.1	37.1	
Other Europe	6,671	2,713	229	173	3,115	1,343	0.1	-53.3	
Americas	244,291	245,446	12,183	5,546	263,175	116,157	6.3	7.7	
Argentina	4,500	5,671	40	52	5,763	2,861	0.1	28.1	
Brazil	5,110	6,722	62	76	6,860	3,244	0.2	34.2	
Canada	47,829	48,006	2,305	556	50,867	22,571	1.2	6.4	
Chile	2,973	3,873	72	24	3,969	2,005	0.1	33.5	
Colombia	1,497	1,731	40	32	1,803	896	0.0	20.4	
Costa Rica	245	288	9	8	305	146	0.0	24.5	
Ecuador	191	253	15	15	283	135	0.0	48.2	
Mexico	4,164	4,885	49	32	4,966	2,461	0.1	19.3	
Peru	576	621	37	19	677	338	0.0	17.5	
United States	173,076	171,000	9,373	4,591	184,964	80,219	4.4	6.9	
Uruguay	504	600	10	8	618	290	0.0	22.6	
Other Americas	3,626	1,796	171	133	2,100	991	0.0	-42.1	
Africa	5,626	5,053	565	284	5,902	2,310	0.1	4.9	
Cameroon	225	119	7	21	147	18	0.0	-34.7	
Congo	66	47	3	8	58	14	0.0	-12.1	
Ghana	149	112	8	14	134	45	0.0	-10.1	
Kenya	266	234	19	45	298	143	0.0	12.0	
Liberia	94	46	0	6	52	11	0.0	-44.7	
Nigeria	570	309	256	40	605	60	0.0	6.1	
Sudan	52	48	8	4	60	6	0.0	15.4	
South Africa	3,530	3,746	215	82	4,043	1,793	0.1	14.5	
Uganda	80	50	3	13	66	23	0.0	-17.5	
Other Africa	594	342	46	51	439	197	0.0	-26.1	
Middle East	10,715	10,457	400	182	11,039	3,641	0.3	3.0	
Egypt	219	257	58	14	329	64	0.0	50.2	
Iran	646	623	27	5	655	159	0.0	1.4	
Iraq	83	123	4	7	134	39	0.0	61.4	
Israel	7,921	7,362	274	48	7,684	3,047	0.2	-3.0	
Kuwait	712	1,089	2	30	1,121	48	0.0	57.4	
Oman	150	197	0	2	199	25	0.0	32.7	
Palestine	51	86	2	6	94	15	0.0	84.3	
Qatar	70	85	0	10	95	38	0.0	35.7	
Saudi Arabia	87	139	2	9	150	23	0.0	72.4	
United Arab Emirates	243	144	0	2	146	18	0.0	-39.9	
Yemen	156	122	8	14	144	27	0.0	-7.7	
Other Middle East	377	230	23	35	288	138	0.0	-23.6	

Remark:

- Cambodian outbound tourist departures: 871,646
 - International outbound tourist departures: 4,173,597

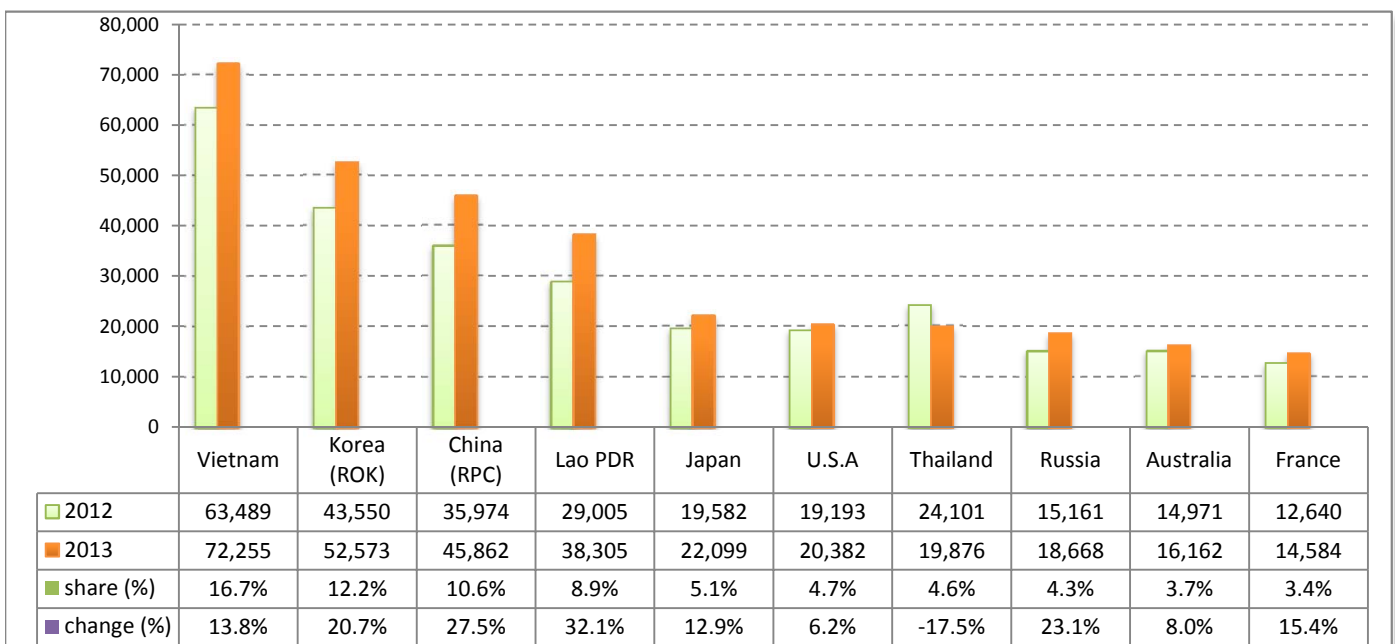
Executive Summary Report in December 2013

I. International tourist arrivals to Cambodia in December 2013 was: **431,807**

II. Mode of arrivals

	arrivals	share (%)
Air	226,962	52.6
Phnom Penh Int'l Airport	86,328	20.0
Siem Reap Int'l Airport	140,634	32.6
Land and Water ways	204,845	47.4
Land	196,153	45.4
Waterway	8,692	2.0
Total	431,807	100.0

III. Top ten markets arrivals in December 2013



IV. International tourist arrivals to Cambodia in December 2013

	Inbound tourism		share (%)		change (%)
	2012	2013	2012	2013	2013*/12
Air	190,922	226,962	49.9	52.6	18.9
Phnom Penh Int'l Airport	75,177	86,328	19.7	20.0	14.8
Siem Reap Int'l Airport	115,745	140,634	30.3	32.6	21.5
Land and Water ways	191,404	204,845	50.1	47.4	7.0
Land	182,979	196,153	47.9	45.4	7.2
Waterway	8,425	8,692	2.2	2.0	3.2
Total	382,326	431,807	100.0	100.0	12.9

V. Remark: Percentage share of international tourist arrivals at destinations in December 2013

	Arrivals		share (%)		change (%)
	2012	2013	2012	2013	2013*/12
Phnom Penh & Other Destinations	155,884	179,438	40.8	41.6	15.1
Siem Reap Province	226,442	252,369	59.2	58.4	11.4
Total	382,326	431,807	100.0	100.0	12.9

VI. Outbound tourism in December 2013

	Outbound tourism		change (%)
	2012	2013	2013*/12
Cambodian outbound tourists	66,181	72,309	9.3
International outbound tourists	374,130	417,223	11.5

International Tourist Arrivals to Cambodia by Country of Residence in December 2013

(by all mean of transportations)

Regions Country of Residence	2012		2013			share		change
			Purpose of Visit		Total	Female	(%)	(%)
			Holiday	Business	Other			2013*
GRAND TOTAL	382,326	415,396	14,023	2,388	431,807	206,718	100.0	12.9
Asia and the Pacific	280,291	307,953	11,159	1,426	320,538	157,838	74.2	14.4
ASEAN (South-East Asia)	148,624	162,444	3,289	483	166,216	83,155	38.5	11.8
Brunei Darussalam	89	168	4	2	174	83	0.0	95.5
Indonesia	2,380	2,406	380	18	2,804	873	0.6	17.8
Lao PDR	29,005	38,247	17	41	38,305	24,760	8.9	32.1
Malaysia	12,522	13,811	584	22	14,417	5,804	3.3	15.1
Myanmar	686	368	42	17	427	152	0.1	-37.8
Philippines	8,871	9,559	589	50	10,198	6,086	2.4	15.0
Singapore	7,481	7,473	274	13	7,760	3,282	1.8	3.7
Thailand	24,101	19,006	715	155	19,876	9,047	4.6	-17.5
Vietnam	63,489	71,406	684	165	72,255	33,068	16.7	13.8
North-East Asia	109,853	123,572	6,786	737	131,095	64,792	30.4	19.3
China (RPC)	35,974	41,758	3,754	350	45,862	22,405	10.6	27.5
Hong Kong SAR	1,244	1,485	17	0	1,502	840	0.3	20.7
Japan	19,582	20,974	926	199	22,099	10,418	5.1	12.9
Korea (ROK)	43,550	51,227	1,166	180	52,573	27,228	12.2	20.7
Mongolia	32	19	2	0	21	10	0.0	-34.4
Taiwan, China	9,471	8,109	921	8	9,038	3,891	2.1	-4.6
Southern Asia	3,055	3,010	318	80	3,408	1,112	0.8	11.6
Afghanistan	24	7	0	0	7	0	0.0	-70.8
Bangladesh	206	54	19	4	77	13	0.0	-62.6
Bhutan	11	12	1	4	17	8	0.0	54.5
India	2,365	2,637	229	46	2,912	1,006	0.7	23.1
Nepal	203	98	20	9	127	28	0.0	-37.4
Pakistan	112	84	26	7	117	12	0.0	4.5
Srilanka	134	118	23	10	151	45	0.0	12.7
Western Asia	303	344	26	2	372	184	0.1	22.8
Kazakhstan	238	270	22	1	293	149	0.1	23.1
Uzbekistan	65	74	4	1	79	35	0.0	21.5
Oceania	17,524	18,374	726	119	19,219	8,512	4.5	9.7
Australia	14,971	15,460	606	96	16,162	7,144	3.7	8.0
Fiji	5	11	1	0	12	5	0.0	140.0
New Zealand	2,548	2,903	119	23	3,045	1,363	0.7	19.5
Other Asia & the Pacific	932	209	14	5	228	83	0.1	-75.5
Europe	73,121	78,294	1,864	545	80,703	35,421	18.7	10.4
Northern Europe	17,513	17,899	514	129	18,542	7,002	4.3	5.9
Denmark	1,017	1,068	24	14	1,106	432	0.3	8.8
Finland	973	1,014	16	6	1,036	410	0.2	6.5
Iceland	79	33	2	1	36	10	0.0	-54.4
Ireland	793	917	26	10	953	363	0.2	20.2
Norway	906	991	23	7	1,021	375	0.2	12.7
Sweden	2,628	2,433	38	18	2,489	944	0.6	-5.3
United Kingdom	11,117	11,443	385	73	11,901	4,468	2.8	7.1
Western Europe	30,251	31,810	987	335	33,132	13,691	7.7	9.5
Austria	924	1,038	11	4	1,053	437	0.2	14.0
Belgium	1,719	1,855	71	15	1,941	737	0.4	12.9
France	12,640	13,759	608	217	14,584	6,308	3.4	15.4
Germany	9,376	9,494	180	51	9,725	3,884	2.3	3.7
Luxembourg	65	81	1	0	82	30	0.0	26.2
Monaco	10	0	0	0	0	0	0.0	-100.0
Netherlands	3,226	2,930	57	26	3,013	1,198	0.7	-6.6
Switzerland	2,291	2,653	59	22	2,734	1,097	0.6	19.3
Central / Eastern Europe	18,770	22,331	217	50	22,598	11,988	5.2	20.4
Bulgaria	136	128	5	0	133	73	0.0	-2.2
Czech Republic	451	571	8	4	583	241	0.1	29.3
Estonia	159	230	2	0	232	99	0.1	45.9
Hungary	305	285	3	2	290	111	0.1	-4.9
Lithuania	133	158	1	0	159	81	0.0	19.5
Poland	1,351	1,231	5	4	1,240	599	0.3	-8.2
Romania	212	235	5	4	244	126	0.1	15.1
Russian Federation	15,161	18,486	149	33	18,668	10,132	4.3	23.1
Slovakia	160	152	4	3	159	60	0.0	-0.6
Ukraine	702	855	35	0	890	466	0.2	26.8

International Tourist Arrivals to Cambodia by Country of Residence in December 2013

(by all mean of transportations)

Regions Country of Residence	2012		2013			Total	Female	share	change
	Purpose of Visit			2013*	2013*12				
	Holiday	Business	Other			(%)	(%)		
GRAND TOTAL	382,326	415,396	14,023	2,388	431,807	206,718	100.0	12.9	
Southern Europe	5,743	6,048	135	28	6,211	2,620	1.4	8.1	
Croatia	92	139	4	0	143	72	0.0	55.4	
Greece	143	157	4	2	163	61	0.0	14.0	
Italy	2,872	2,855	53	14	2,922	1,165	0.7	1.7	
Portugal	415	422	12	0	434	207	0.1	4.6	
Serbia	50	71	2	0	73	36	0.0	46.0	
Slovenia	147	170	11	0	181	85	0.0	23.1	
Spain	1,596	1,829	30	10	1,869	839	0.4	17.1	
Turkey	428	405	19	2	426	155	0.1	-0.5	
Other Europe	844	206	11	3	220	120	0.1	-73.9	
Americas	26,986	27,183	937	379	28,499	12,665	6.6	5.6	
Argentina	287	460	3	3	466	207	0.1	62.4	
Brazil	660	828	5	15	848	373	0.2	28.5	
Canada	5,186	5,092	189	45	5,326	2,326	1.2	2.7	
Chile	269	288	1	5	294	146	0.1	9.3	
Colombia	152	230	3	5	238	132	0.1	56.6	
Costa Rica	15	20	0	0	20	10	0.0	33.3	
Ecuador	18	50	3	5	58	30	0.0	222.2	
Mexico	499	632	7	0	639	307	0.1	28.1	
Peru	57	51	3	5	59	34	0.0	3.5	
United States	19,193	19,373	715	294	20,382	9,023	4.7	6.2	
Uruguay	31	12	2	0	14	5	0.0	-54.8	
Other Americas	619	147	6	2	155	72	0.0	-75.0	
Africa	846	839	39	23	901	382	0.2	6.5	
Cameroon	15	15	2	1	18	2	0.0	20.0	
Congo	7	6	0	0	6	0	0.0	-14.3	
Ghana	10	4	0	2	6	3	0.0	-40.0	
Kenya	44	43	1	4	48	23	0.0	9.1	
Liberia	4	4	0	4	8	2	0.0	100.0	
Nigeria	40	15	15	1	31	1	0.0	-22.5	
Sudan	8	3	1	0	4	0	0.0	-50.0	
South Africa	668	711	17	8	736	330	0.2	10.2	
Uganda	7	4	0	1	5	3	0.0	-28.6	
Other Africa	43	34	3	2	39	18	0.0	-9.3	
Middle East	1,082	1,127	24	15	1,166	412	0.3	7.8	
Egypt	27	27	1	0	28	6	0.0	3.7	
Iran	62	53	3	0	56	6	0.0	-9.7	
Iraq	3	6	0	0	6	3	0.0	100.0	
Israel	843	905	18	5	928	373	0.2	10.1	
Kuwait	49	65	0	5	70	5	0.0	42.9	
Oman	11	11	0	0	11	4	0.0	0.0	
Palestine	7	4	0	0	4	1	0.0	-42.9	
Qatar	4	3	0	1	4	0	0.0	0.0	
Saudi Arabia	12	9	0	3	12	1	0.0	0.0	
United Arab Emirates	19	8	0	0	8	0	0.0	-57.9	
Yemen	8	13	0	0	13	2	0.0	62.5	
Other Middle East	37	23	2	1	26	11	0.0	-29.7	

Remark:

- Cambodian outbound tourist departures: 72,309
- International outbound tourist departures: 417,223

COMPILED BY:

1. Mr. Kong Sopheareak

Director
Statistics & Tourism Information Department
Fax: +855 23 885003
E-mail: kong@mot.gov.kh

2. Mr. Horth Vanny

Chief of Tourism Statistics Office
Compile and data analysis
Tel.: +855 12 827664