



KINGDOM OF CAMBODIA  
NATION RELIGION KING



# TOURISM STATISTICS REPORT

# November 2014

**MINISTRY OF TOURISM**

Statistics and Tourism Information Department

No. A3, Street 169, Sangkat Veal Vong, Khan 7 Makara, Phnom Penh, Cambodia.

Fax: +855 23 885003

E-mail: [kong@mot.gov.kh](mailto:kong@mot.gov.kh)

Web site: [www.mot.gov.kh](http://www.mot.gov.kh)

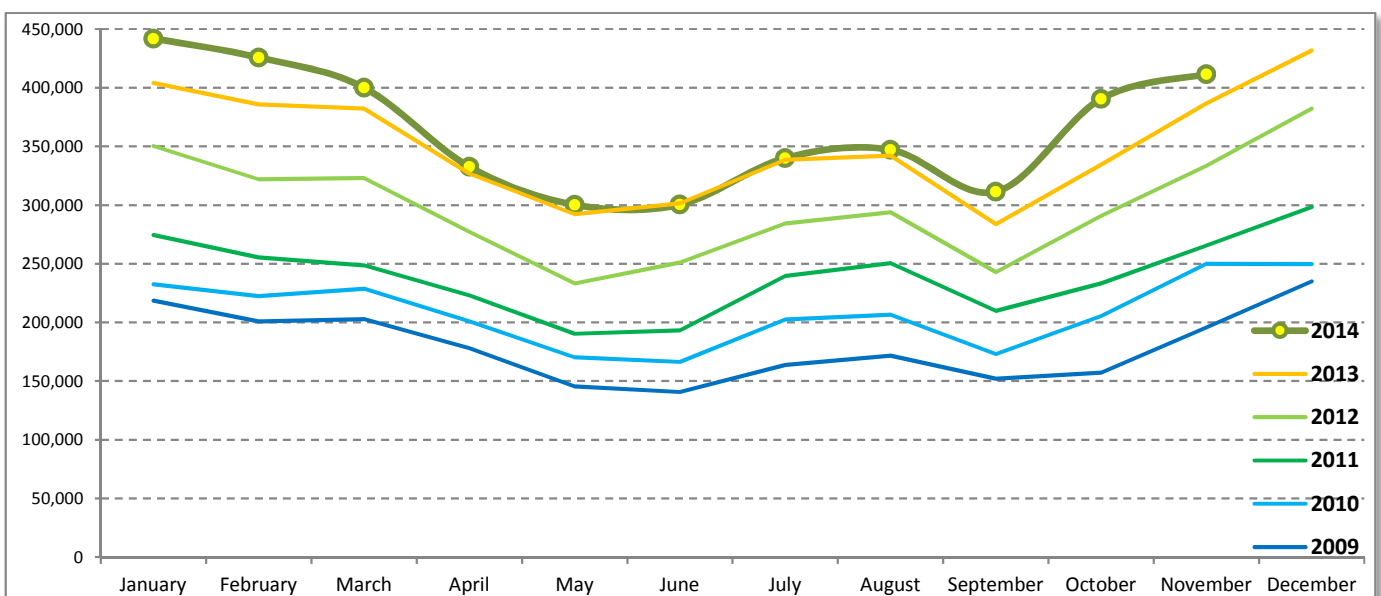
## Tourism Highlights

### International Tourist Arrivals, Average Length of Stay, Hotels Occupancy & Tourism Receipts 1993 - 2013

Years	Int'l Tourist Arrivals		Average Length	Hotels Occupancy	Tourism Receipts
	Number	Change (%)	of Stay (Days)	(%)	(Million US\$)
1993	118,183	-	N/A	N/A	N/A
1994	176,617	49.4	N/A	N/A	N/A
1995	219,680	24.4	8.00	37.00	100
1996	260,489	18.6	7.50	40.00	118
1997	218,843	-16.0	6.40	30.00	103
1998	286,524	30.9	5.20	40.00	166
1999	367,743	28.3	5.50	44.00	190
2000	466,365	26.8	5.50	45.00	228
2001	604,919	29.7	5.50	48.00	304
2002	786,524	30.0	5.80	50.00	379
2003	701,014	-10.9	5.50	50.00	347
2004	1,055,202	50.5	6.30	52.00	578
2005	1,421,615	34.7	6.30	52.00	832
2006	1,700,041	19.6	6.50	54.79	1,049
2007	2,015,128	18.5	6.50	54.79	1,400
2008	2,125,465	5.5	6.65	62.68	1,595
2009	2,161,577	1.7	6.45	63.57	1,561
2010	2,508,289	16.0	6.45	65.74	1,786
2011	2,881,862	14.9	6.50	66.15	1,912
2012	3,584,307	24.4	6.30	68.49	2,210
2013	4,210,165	17.5	6.75	69.53	2,547

### International tourist arrivals to Cambodia

Destination	Months	2009	2010	2011	2012	2013	2014	change (%) 2014*/13
<b>Cambodia</b>	<b>Q1</b>	<b>622,288</b>	<b>683,692</b>	<b>778,467</b>	<b>995,210</b>	<b>1,172,072</b>	<b>1,267,922</b>	<b>8.2</b>
<i>International tourist arrivals by all means of transportations</i>	January	218,691	232,590	274,471	350,257	404,106	442,045	9.4
	February	200,789	222,354	255,499	321,870	385,760	425,801	10.4
	March	202,808	228,748	248,497	323,083	382,206	400,076	4.7
	<b>Q2</b>	<b>464,230</b>	<b>537,464</b>	<b>606,562</b>	<b>761,442</b>	<b>920,527</b>	<b>933,446</b>	<b>1.4</b>
	April	177,955	200,965	223,032	277,304	327,000	332,690	1.7
	May	145,564	170,164	190,258	233,220	292,115	300,302	2.8
	June	140,711	166,335	193,272	250,918	301,412	300,454	-0.3
	<b>Q3</b>	<b>487,422</b>	<b>582,024</b>	<b>699,760</b>	<b>820,888</b>	<b>964,612</b>	<b>998,690</b>	<b>3.5</b>
	July	163,817	202,349	239,527	284,282	338,761	340,091	0.4
	August	171,668	206,563	250,429	293,859	342,064	347,211	1.5
	September	151,937	173,112	209,804	242,747	283,787	311,388	9.7
	<b>Q4</b>	<b>587,637</b>	<b>705,109</b>	<b>797,073</b>	<b>1,006,767</b>	<b>1,152,954</b>	<b>802,138</b>	
	October	157,105	205,515	233,190	290,959	334,410	390,637	16.8
	November	195,570	249,892	265,539	333,482	386,737	411,501	6.4
	December	234,962	249,702	298,344	382,326	431,807		
	<b>Total</b>	<b>2,161,577</b>	<b>2,508,289</b>	<b>2,881,862</b>	<b>3,584,307</b>	<b>4,210,165</b>	<b>4,002,196</b>	<b>5.9</b>



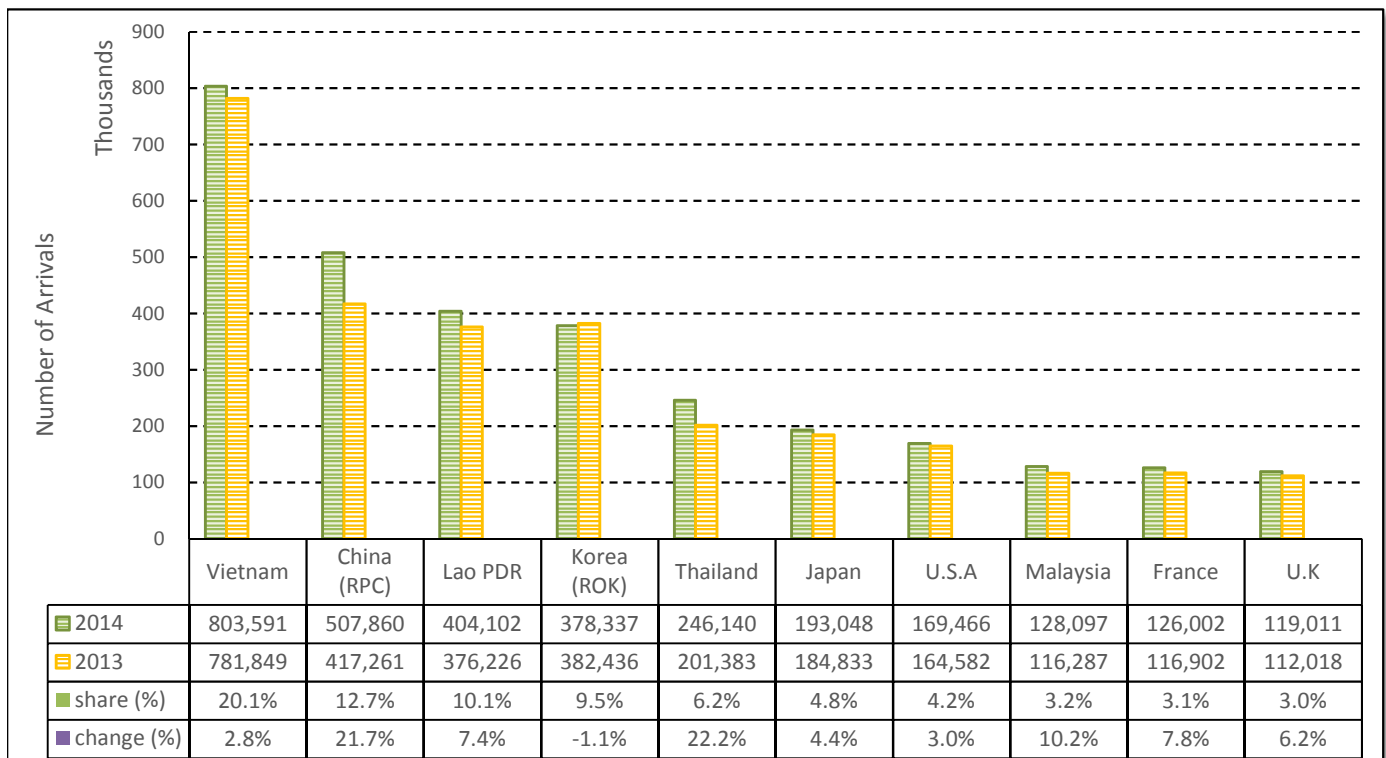
# TOURISM STATISTICS REPORT IN THE FIRST ELEVEN MONTHS 2014

## I. INBOUND TOURISM

### 1. International tourist arrivals to Cambodia in January - November 2014

	Inbound tourism		share (%)		change (%)
	2013	2014	2013	2014	2014*/13
<b>Air</b>	<b>1,790,696</b>	<b>2,027,877</b>	<b>47.4</b>	<b>50.7</b>	<b>13.2</b>
Phnom Penh Int'l Airport (PNH)	750,049	825,605	19.9	20.6	10.1
Siem Reap Int'l Airport (REP)	1,040,647	1,202,272	27.5	30.0	15.5
<b>Land and Water ways</b>	<b>1,987,662</b>	<b>1,974,319</b>	<b>52.6</b>	<b>49.3</b>	<b>-0.7</b>
Land	1,921,301	1,891,362	50.9	47.3	-1.6
Waterway	66,361	82,957	1.8	2.1	25.0
<b>Total</b>	<b>3,778,358</b>	<b>4,002,196</b>	<b>100.0</b>	<b>100.0</b>	<b>5.9</b>

### 2. Top ten markets arrivals in January - November 2014



## II. OUTBOUND TOURISM

### Outbound tourism in January - November 2014

	Outbound tourism		change (%)
	2013	2014	2014*/13
Cambodian Outbound Tourists	799,337	876,072	9.6
International Tourists Departure	3,756,374	3,808,120	1.4

## III. INTERNAL TOURISM

### Foreign visitor arrivals to the regions in January - November 2014

	Arrivals		share (%)		change (%)
	2013	2014	2013	2014	2014*/13
Phnom Penh & Surrounding	1,793,441	1,901,075	41.7	41.6	6.0
Siem Reap Angkor	1,984,917	2,101,121	46.2	45.9	5.9
Coastal Areas	466,443	516,197	10.8	11.3	10.7
Eco-tourism Areas	55,070	56,593	1.3	1.2	2.8
<b>Total</b>	<b>4,299,871</b>	<b>4,574,986</b>	<b>100.0</b>	<b>100.0</b>	<b>6.4</b>

## International Tourist Arrivals to Cambodia by Country of Residence in January - November 2014

(by all mean of transportations)

Regions Country of Residence	2013		2014			share		change	
			Purpose of Visit			Total	Female	2014*	2014*/13
			Holiday	Business	Other				
<b>GRAND TOTAL</b>	<b>3,778,358</b>	<b>3,777,402</b>	<b>187,464</b>	<b>37,330</b>	<b>4,002,196</b>	<b>1,788,738</b>	<b>100.0</b>	<b>5.9</b>	
<b>Asia and the Pacific</b>	<b>2,911,354</b>	<b>2,931,762</b>	<b>152,779</b>	<b>25,994</b>	<b>3,110,535</b>	<b>1,398,262</b>	<b>77.7</b>	<b>6.8</b>	
<b>ASEAN (South-East Asia)</b>	<b>1,665,291</b>	<b>1,695,754</b>	<b>47,832</b>	<b>18,058</b>	<b>1,761,644</b>	<b>799,134</b>	<b>44.0</b>	<b>5.8</b>	
Brunei Darussalam	640	764	19	63	846	357	0.0	32.2	
Indonesia	25,395	26,307	5,488	288	32,083	8,868	0.8	26.3	
Lao PDR	376,226	401,689	281	2,132	404,102	226,033	10.1	7.4	
Malaysia	116,287	119,610	8,282	205	128,097	43,165	3.2	10.2	
Myanmar	4,662	4,757	420	178	5,355	2,156	0.1	14.9	
Philippines	108,801	75,578	7,207	685	83,470	47,784	2.1	-23.3	
Singapore	50,048	54,930	2,827	203	57,960	19,989	1.4	15.8	
Thailand	201,383	230,634	11,266	4,240	246,140	92,647	6.2	22.2	
Vietnam	781,849	781,485	12,042	10,064	803,591	358,135	20.1	2.8	
<b>North-East Asia</b>	<b>1,079,909</b>	<b>1,077,672</b>	<b>93,307</b>	<b>5,025</b>	<b>1,176,004</b>	<b>528,532</b>	<b>29.4</b>	<b>8.9</b>	
China (RPC)	417,261	452,709	53,259	1,892	507,860	231,139	12.7	21.7	
Hong Kong SAR	7,074	7,676	194	16	7,886	3,845	0.2	11.5	
Japan	184,833	177,896	13,457	1,695	193,048	77,212	4.8	4.4	
Korea (ROK)	382,436	362,508	14,450	1,379	378,337	180,735	9.5	-1.1	
Mongolia	351	291	14	23	328	155	0.0	-6.6	
Taiwan, China	87,954	76,592	11,933	20	88,545	35,446	2.2	0.7	
<b>Southern Asia</b>	<b>26,502</b>	<b>27,012</b>	<b>3,817</b>	<b>884</b>	<b>31,713</b>	<b>8,892</b>	<b>0.8</b>	<b>19.7</b>	
Afghanistan	266	182	11	13	206	51	0.0	-22.6	
Bangladesh	1,534	1,438	274	174	1,886	259	0.0	22.9	
Bhutan	84	71	3	19	93	34	0.0	10.7	
India	20,698	22,177	2,552	427	25,156	7,654	0.6	21.5	
Nepal	1,348	1,262	219	83	1,564	331	0.0	16.0	
Pakistan	1,063	741	331	85	1,157	184	0.0	8.8	
Sri Lanka	1,509	1,141	427	83	1,651	379	0.0	9.4	
<b>Western Asia</b>	<b>2,753</b>	<b>2,759</b>	<b>205</b>	<b>23</b>	<b>2,987</b>	<b>1,593</b>	<b>0.1</b>	<b>8.5</b>	
Kazakhstan	2,218	2,282	164	8	2,454	1,292	0.1	10.6	
Uzbekistan	535	477	41	15	533	301	0.0	-0.4	
<b>Oceania</b>	<b>133,493</b>	<b>125,824</b>	<b>7,166</b>	<b>1,630</b>	<b>134,620</b>	<b>58,511</b>	<b>3.4</b>	<b>0.8</b>	
Australia	115,866	109,043	5,910	1,417	116,370	50,975	2.9	0.4	
Fiji	95	105	17	11	133	40	0.0	40.0	
New Zealand	17,532	16,676	1,239	202	18,117	7,496	0.5	3.3	
Other Asia & the Pacific	3,406	2,741	452	374	3,567	1,600	0.1	4.7	
<b>Europe</b>	<b>617,454</b>	<b>602,122</b>	<b>22,411</b>	<b>6,030</b>	<b>630,563</b>	<b>276,807</b>	<b>15.8</b>	<b>2.1</b>	
<b>Northern Europe</b>	<b>159,521</b>	<b>160,081</b>	<b>6,650</b>	<b>1,556</b>	<b>168,287</b>	<b>68,932</b>	<b>4.2</b>	<b>5.5</b>	
Denmark	9,379	10,245	309	130	10,684	4,443	0.3	13.9	
Finland	5,695	5,577	264	100	5,941	2,245	0.1	4.3	
Iceland	752	706	26	12	744	294	0.0	-1.1	
Ireland	9,292	8,464	221	62	8,747	3,774	0.2	-5.9	
Norway	8,461	8,445	233	57	8,735	3,701	0.2	3.2	
Sweden	13,924	13,818	446	161	14,425	5,601	0.4	3.6	
United Kingdom	112,018	112,826	5,151	1,034	119,011	48,874	3.0	6.2	
<b>Western Europe</b>	<b>254,302</b>	<b>248,721</b>	<b>11,439</b>	<b>3,406</b>	<b>263,566</b>	<b>110,973</b>	<b>6.6</b>	<b>3.6</b>	
Austria	8,038	7,531	163	33	7,727	3,202	0.2	-3.9	
Belgium	14,230	13,404	607	246	14,257	5,742	0.4	0.2	
France	116,902	116,754	7,252	1,996	126,002	53,346	3.1	7.8	
Germany	71,840	71,419	1,979	701	74,099	31,035	1.9	3.1	
Luxembourg	489	421	10	6	437	160	0.0	-10.6	
Monaco	103	83	11	2	96	39	0.0	-6.8	
Netherlands	25,063	22,602	746	271	23,619	10,058	0.6	-5.8	
Switzerland	17,637	16,507	671	151	17,329	7,391	0.4	-1.7	
<b>Central / Eastern Europe</b>	<b>142,854</b>	<b>127,623</b>	<b>2,141</b>	<b>331</b>	<b>130,095</b>	<b>67,331</b>	<b>3.3</b>	<b>-8.9</b>	
Bulgaria	828	937	9	18	964	497	0.0	16.4	
Czech Republic	4,262	4,610	82	30	4,722	1,998	0.1	10.8	
Estonia	1,134	1,564	52	14	1,630	665	0.0	43.7	
Hungary	2,657	2,838	63	22	2,923	1,259	0.1	10.0	
Lithuania	1,449	1,415	16	2	1,433	724	0.0	-1.1	
Poland	11,267	10,961	90	54	11,105	5,466	0.3	-1.4	
Romania	1,282	1,572	92	14	1,678	850	0.0	30.9	
Russian Federation	113,007	96,677	1,547	138	98,362	52,314	2.5	-13.0	
Slovakia	1,939	2,050	76	29	2,155	950	0.1	11.1	
Ukraine	5,029	4,999	114	10	5,123	2,608	0.1	1.9	

Source: Statistics and Tourism Information Department, MOT

## International Tourist Arrivals to Cambodia by Country of Residence in January - November 2014

(by all mean of transportations)

Regions Country of Residence	2013		2014			share		change	
			Purpose of Visit			Total	Female	(%)	(%)
			Holiday	Business	Other			2014*	2014*/13
<b>GRAND TOTAL</b>	<b>3,778,358</b>	<b>3,777,402</b>	<b>187,464</b>	<b>37,330</b>	<b>4,002,196</b>	<b>1,788,738</b>	<b>100.0</b>	<b>5.9</b>	
<b>Southern Europe</b>	<b>57,882</b>	<b>63,531</b>	<b>1,793</b>	<b>499</b>	<b>65,823</b>	<b>28,393</b>	<b>1.6</b>	<b>13.7</b>	
Croatia	655	646	22	8	676	307	0.0	3.2	
Greece	972	1,023	49	7	1,079	394	0.0	11.0	
Italy	22,274	24,951	763	204	25,918	10,485	0.6	16.4	
Portugal	3,653	3,842	107	20	3,969	1,780	0.1	8.7	
Serbia	540	598	23	3	624	293	0.0	15.6	
Slovenia	1,040	822	19	0	841	363	0.0	-19.1	
Spain	24,503	27,834	465	162	28,461	13,399	0.7	16.2	
Turkey	4,245	3,815	345	95	4,255	1,372	0.1	0.2	
Other Europe	2,895	2,166	388	238	2,792	1,178	0.1	-3.6	
<b>Americas</b>	<b>234,676</b>	<b>228,779</b>	<b>11,436</b>	<b>4,936</b>	<b>245,151</b>	<b>107,842</b>	<b>6.1</b>	<b>4.5</b>	
Argentina	5,297	5,307	40	35	5,382	2,650	0.1	1.6	
Brazil	6,012	8,337	122	44	8,503	4,175	0.2	41.4	
Canada	45,541	43,839	2,038	411	46,288	20,579	1.2	1.6	
Chile	3,675	4,746	127	20	4,893	2,446	0.1	33.1	
Colombia	1,565	1,908	31	26	1,965	980	0.0	25.6	
Costa Rica	285	345	6	5	356	162	0.0	24.9	
Ecuador	225	289	17	8	314	154	0.0	39.6	
Mexico	4,327	4,758	40	28	4,826	2,379	0.1	11.5	
Peru	618	732	36	15	783	375	0.0	26.7	
United States	164,582	156,364	8,863	4,239	169,466	72,849	4.2	3.0	
Uruguay	604	712	3	4	719	356	0.0	19.0	
Other Americas	1,945	1,442	113	101	1,656	737	0.0	-14.9	
<b>Africa</b>	<b>5,001</b>	<b>4,392</b>	<b>496</b>	<b>202</b>	<b>5,090</b>	<b>1,974</b>	<b>0.1</b>	<b>1.8</b>	
Cameroon	129	103	7	13	123	26	0.0	-4.7	
Congo	52	33	4	10	47	12	0.0	-9.6	
Ghana	128	72	6	9	87	29	0.0	-32.0	
Kenya	250	172	14	34	220	104	0.0	-12.0	
Liberia	44	28	3	1	32	5	0.0	-27.3	
Nigeria	574	354	205	31	590	51	0.0	2.8	
Sudan	56	50	4	17	71	19	0.0	26.8	
South Africa	3,307	3,234	200	35	3,469	1,534	0.1	4.9	
Uganda	61	55	7	3	65	21	0.0	6.6	
Other Africa	400	291	46	49	386	173	0.0	-3.5	
<b>Middle East</b>	<b>9,873</b>	<b>10,347</b>	<b>342</b>	<b>168</b>	<b>10,857</b>	<b>3,853</b>	<b>0.3</b>	<b>10.0</b>	
Egypt	301	249	35	13	297	66	0.0	-1.3	
Iran	599	543	37	15	595	152	0.0	-0.7	
Iraq	128	93	3	3	99	24	0.0	-22.7	
Israel	6,756	7,851	216	60	8,127	3,350	0.2	20.3	
Kuwait	1,051	808	2	26	836	48	0.0	-20.5	
Oman	188	138	0	1	139	18	0.0	-26.1	
Palestine	90	60	2	0	62	14	0.0	-31.1	
Qatar	91	50	7	2	59	15	0.0	-35.2	
Saudi Arabia	138	140	9	2	151	20	0.0	9.4	
United Arab Emirates	138	90	1	0	91	6	0.0	-34.1	
Yemen	131	124	3	4	131	31	0.0	0.0	
Other Middle East	262	201	27	42	270	109	0.0	3.1	

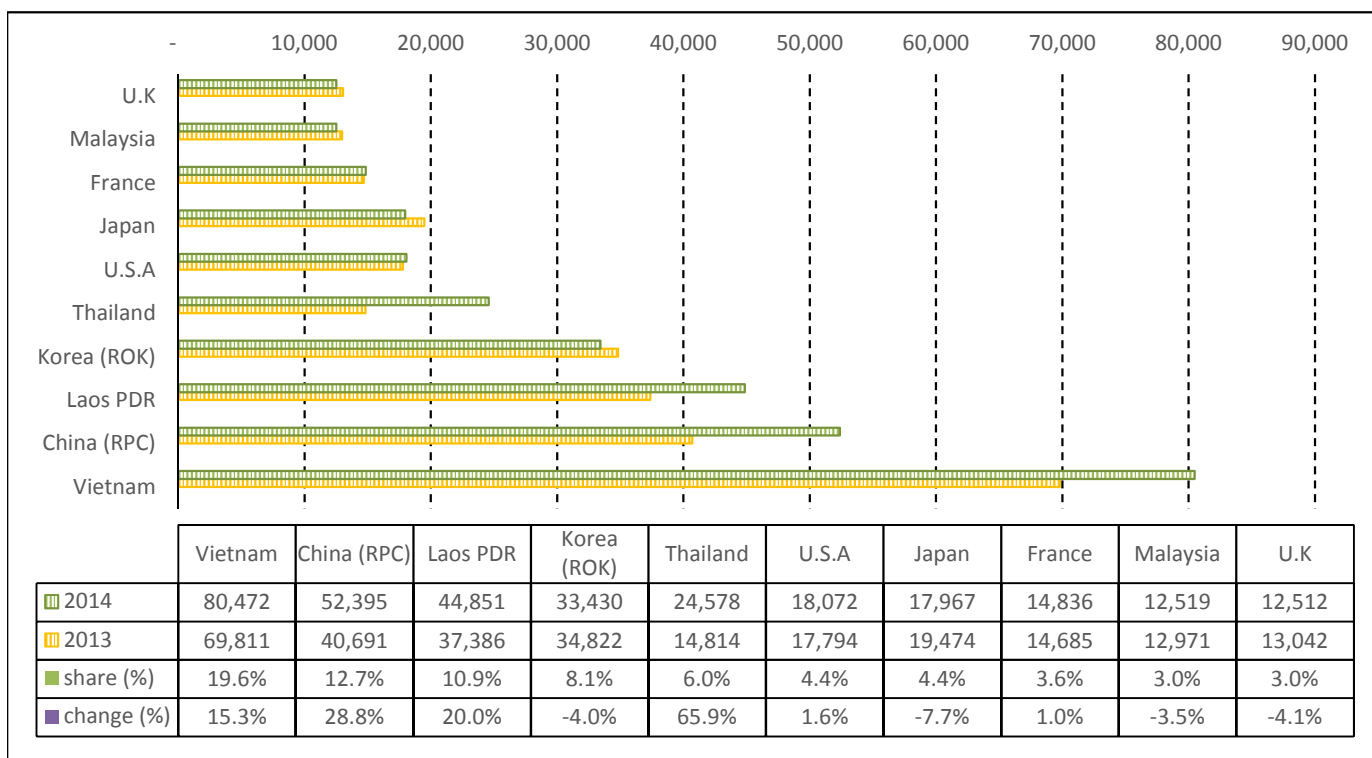
# TOURISM STATISTICS REPORT IN NOVEMBER 2014

## I. INBOUND TOURISM

### 1. International tourist arrivals to Cambodia in November 2014

	Inbound tourism		share (%)		change (%)
	2013	2014	2013	2014	2014*/13
<b>Air</b>	<b>197,409</b>	<b>217,125</b>	<b>51.0</b>	<b>52.8</b>	<b>10.0</b>
Phnom Penh Int'l Airport (PNH)	81,430	87,488	21.1	21.3	7.4
Siem Reap Int'l Airport (REP)	115,979	129,637	30.0	31.5	11.8
<b>Land and Water ways</b>	<b>189,328</b>	<b>194,376</b>	<b>49.0</b>	<b>47.2</b>	<b>2.7</b>
Land	181,464	185,244	46.9	45.0	2.1
Waterway	7,864	9,132	2.0	2.2	16.1
<b>Total</b>	<b>386,737</b>	<b>411,501</b>	<b>100.0</b>	<b>100.0</b>	<b>6.4</b>

### 2. Top ten markets arrivals in November 2014



## II. OUTBOUND TOURISM

### Outbound tourism in November 2014

	Outbound tourism		change (%)
	2013	2014	2014*/13
Cambodian Outbound Tourists	76,657	86,560	12.9
International Tourists Departure	370,712	356,684	-3.8

## III. INTERNAL TOURISM

### Foreign visitor arrivals to the regions in November 2014

	Arrivals		share (%)		change (%)
	2013	2014	2013	2014	2014*/13
Phnom Penh & Surrounding	172,006	199,298	40.0	42.7	15.9
Siem Reap Angkor	214,731	212,203	49.9	45.5	-1.2
Coastal Areas	37,990	49,017	8.8	10.5	29.0
Eco-tourism Areas	5,188	6,064	1.2	1.3	16.9
<b>Total</b>	<b>429,915</b>	<b>466,582</b>	<b>100.0</b>	<b>100.0</b>	<b>8.5</b>

## International Tourist Arrivals to Cambodia by Country of Residence in November 2014

(by all mean of transportations)

Regions Country of Residence	2013	2014			Total	Female	share	change
		Purpose of Visit					(%)	(%)
		Holiday	Business	Other			2014*	2014*/13
<b>GRAND TOTAL</b>	<b>386,737</b>	<b>381,097</b>	<b>19,907</b>	<b>10,497</b>	<b>411,501</b>	<b>167,224</b>	<b>100.0</b>	<b>6.4</b>
<b>Asia and the Pacific</b>	<b>278,459</b>	<b>284,850</b>	<b>16,092</b>	<b>9,432</b>	<b>310,374</b>	<b>122,355</b>	<b>75.4</b>	<b>11.5</b>
<b>ASEAN (South-East Asia)</b>	<b>155,516</b>	<b>165,313</b>	<b>5,872</b>	<b>8,534</b>	<b>179,719</b>	<b>66,329</b>	<b>43.7</b>	<b>15.6</b>
Brunei Darussalam	96	71	1	29	101	38	0.0	5.2
Indonesia	2,474	2,454	610	56	3,120	858	0.8	26.1
Lao PDR	37,386	44,751	10	90	44,851	17,888	10.9	20.0
Malaysia	12,971	11,636	824	59	12,519	4,318	3.0	-3.5
Myanmar	525	568	36	51	655	243	0.2	24.8
Philippines	10,850	5,115	752	93	5,960	3,263	1.4	-45.1
Singapore	6,589	7,086	336	41	7,463	2,988	1.8	13.3
Thailand	14,814	22,522	1,135	921	24,578	7,676	6.0	65.9
Vietnam	69,811	71,110	2,168	7,194	80,472	29,057	19.6	15.3
<b>North-East Asia</b>	<b>105,341</b>	<b>103,505</b>	<b>8,920</b>	<b>568</b>	<b>112,993</b>	<b>48,857</b>	<b>27.5</b>	<b>7.3</b>
China (RPC)	40,691	47,157	5,038	200	52,395	23,977	12.7	28.8
Hong Kong SAR	1,329	1,295	21	2	1,318	681	0.3	-0.8
Japan	19,474	16,503	1,237	227	17,967	7,183	4.4	-7.7
Korea (ROK)	34,822	31,775	1,518	137	33,430	13,906	8.1	-4.0
Mongolia	15	11	1	2	14	7	0.0	-6.7
Taiwan, China	9,010	6,764	1,105	0	7,869	3,103	1.9	-12.7
<b>Southern Asia</b>	<b>2,456</b>	<b>2,877</b>	<b>462</b>	<b>89</b>	<b>3,428</b>	<b>877</b>	<b>0.8</b>	<b>39.6</b>
Afghanistan	24	4	2	1	7	0	0.0	-70.8
Bangladesh	105	179	42	15	236	37	0.1	124.8
Bhutan	5	8	1	0	9	2	0.0	80.0
India	1,928	2,292	325	44	2,661	742	0.6	38.0
Nepal	138	160	26	12	198	51	0.0	43.5
Pakistan	111	126	24	7	157	15	0.0	41.4
Srilanka	145	108	42	10	160	30	0.0	10.3
<b>Western Asia</b>	<b>283</b>	<b>258</b>	<b>9</b>	<b>9</b>	<b>276</b>	<b>142</b>	<b>0.1</b>	<b>-2.5</b>
Kazakhstan	231	195	8	0	203	92	0.0	-12.1
Uzbekistan	52	63	1	9	73	50	0.0	40.4
<b>Oceania</b>	<b>14,548</b>	<b>12,545</b>	<b>738</b>	<b>130</b>	<b>13,413</b>	<b>5,932</b>	<b>3.3</b>	<b>-7.8</b>
Australia	12,426	10,900	610	113	11,623	5,200	2.8	-6.5
Fiji	8	18	0	2	20	7	0.0	150.0
New Zealand	2,114	1,627	128	15	1,770	725	0.4	-16.3
Other Asia & the Pacific	315	352	91	102	545	218	0.1	73.0
<b>Europe</b>	<b>80,939</b>	<b>69,868</b>	<b>2,520</b>	<b>582</b>	<b>72,970</b>	<b>32,575</b>	<b>17.7</b>	<b>-9.8</b>
<b>Northern Europe</b>	<b>18,217</b>	<b>16,741</b>	<b>686</b>	<b>150</b>	<b>17,577</b>	<b>7,305</b>	<b>4.3</b>	<b>-3.5</b>
Denmark	968	797	30	9	836	343	0.2	-13.6
Finland	538	645	37	11	693	289	0.2	28.8
Iceland	38	70	6	5	81	28	0.0	113.2
Ireland	1,121	797	21	2	820	344	0.2	-26.9
Norway	985	992	28	7	1,027	443	0.2	4.3
Sweden	1,525	1,570	26	12	1,608	641	0.4	5.4
United Kingdom	13,042	11,870	538	104	12,512	5,217	3.0	-4.1
<b>Western Europe</b>	<b>33,688</b>	<b>31,559</b>	<b>1,279</b>	<b>288</b>	<b>33,126</b>	<b>14,438</b>	<b>8.1</b>	<b>-1.7</b>
Austria	1,101	943	15	2	960	412	0.2	-12.8
Belgium	1,891	2,029	66	31	2,126	909	0.5	12.4
France	14,685	13,861	820	155	14,836	6,569	3.6	1.0
Germany	10,595	10,229	242	73	10,544	4,587	2.6	-0.5
Luxembourg	71	38	0	0	38	16	0.0	-46.5
Monaco	2	4	0	0	4	1	0.0	100.0
Netherlands	2,672	2,149	69	14	2,232	942	0.5	-16.5
Switzerland	2,671	2,306	67	13	2,386	1,002	0.6	-10.7
<b>Central / Eastern Europe</b>	<b>21,782</b>	<b>14,448</b>	<b>244</b>	<b>31</b>	<b>14,723</b>	<b>7,632</b>	<b>3.6</b>	<b>-32.4</b>
Bulgaria	172	122	0	0	122	69	0.0	-29.1
Czech Republic	738	691	9	1	701	337	0.2	-5.0
Estonia	167	198	3	1	202	85	0.0	21.0
Hungary	353	452	10	3	465	196	0.1	31.7
Lithuania	269	239	2	0	241	127	0.1	-10.4
Poland	2,447	2,184	11	13	2,208	1,100	0.5	-9.8
Romania	191	223	12	5	240	120	0.1	25.7
Russian Federation	16,457	9,472	170	7	9,649	5,182	2.3	-41.4
Slovakia	263	298	11	0	309	143	0.1	17.5
Ukraine	725	569	16	1	586	273	0.1	-19.2

## International Tourist Arrivals to Cambodia by Country of Residence in November 2014

(by all mean of transportations)

Regions Country of Residence	2013	2014			Total	Female	share	change
	Purpose of Visit			(%)			(%)	
	Holiday	Business	Other	2014*	2014*/13			
<b>GRAND TOTAL</b>	<b>386,737</b>	<b>381,097</b>	<b>19,907</b>	<b>10,497</b>	<b>411,501</b>	<b>167,224</b>	<b>100.0</b>	<b>6.4</b>
<b>Southern Europe</b>	<b>6,974</b>	<b>6,934</b>	<b>184</b>	<b>48</b>	<b>7,166</b>	<b>3,065</b>	<b>1.7</b>	<b>2.8</b>
Croatia	105	109	2	0	111	39	0.0	5.7
Greece	73	103	5	0	108	41	0.0	47.9
Italy	2,978	2,657	85	22	2,764	1,130	0.7	-7.2
Portugal	522	600	12	0	612	288	0.1	17.2
Serbia	68	53	3	0	56	22	0.0	-17.6
Slovenia	82	73	4	0	77	30	0.0	-6.1
Spain	2,815	2,928	43	18	2,989	1,364	0.7	6.2
Turkey	331	411	30	8	449	151	0.1	35.6
Other Europe	278	186	127	65	378	135	0.1	36.0
<b>Americas</b>	<b>25,983</b>	<b>24,856</b>	<b>1,175</b>	<b>431</b>	<b>26,462</b>	<b>11,695</b>	<b>6.4</b>	<b>1.8</b>
Argentina	395	466	1	2	469	230	0.1	18.7
Brazil	662	1,169	16	4	1,189	602	0.3	79.6
Canada	5,888	5,135	216	44	5,395	2,464	1.3	-8.4
Chile	258	385	29	1	415	171	0.1	60.9
Colombia	146	219	4	6	229	102	0.1	56.8
Costa Rica	38	44	0	0	44	17	0.0	15.8
Ecuador	28	21	0	2	23	14	0.0	-17.9
Mexico	479	471	2	2	475	234	0.1	-0.8
Peru	51	89	11	1	101	41	0.0	98.0
United States	17,794	16,809	895	368	18,072	7,795	4.4	1.6
Uruguay	35	48	1	1	50	25	0.0	42.9
Other Americas	209				0		0.0	-100.0
<b>Africa</b>	<b>454</b>	<b>432</b>	<b>83</b>	<b>22</b>	<b>537</b>	<b>162</b>	<b>0.1</b>	<b>18.3</b>
Cameroon	13	7	0	1	8	1	0.0	-38.5
Congo	3	6	0	0	6	0	0.0	100.0
Ghana	3	8	0	2	10	2	0.0	233.3
Kenya	27	10	1	2	13	3	0.0	-51.9
Liberia	2	8	1	0	9	3	0.0	
Nigeria	45	55	25	4	84	5	0.0	86.7
Sudan	7	6	0	0	6	2	0.0	-14.3
South Africa	313	290	39	4	333	117	0.1	6.4
Uganda	15	15	2	0	17	8	0.0	13.3
Other Africa	26	27	15	9	51	21	0.0	96.2
<b>Middle East</b>	<b>902</b>	<b>1,091</b>	<b>37</b>	<b>30</b>	<b>1,158</b>	<b>437</b>	<b>0.3</b>	<b>28.4</b>
Egypt	25	21	4	1	26	4	0.0	4.0
Iran	56	86	5	3	94	26	0.0	67.9
Iraq	11	8	0	2	10	4	0.0	-9.1
Israel	656	881	19	7	907	382	0.2	38.3
Kuwait	83	32	0	4	36	6	0.0	-56.6
Oman	14	10	0	0	10	1	0.0	-28.6
Palestine	3	5	0	0	5	0	0.0	66.7
Qatar	0	7	0	0	7	0	0.0	
Saudi Arabia	17	13	1	1	15	1	0.0	-11.8
United Arab Emirates	8	1	0	0	1	0	0.0	-87.5
Yemen	8	13	0	0	13	2	0.0	62.5
Other Middle East	21	14	8	12	34	11	0.0	61.9



**COMPILED BY:**

1. Mr. Kong Sopheareak

Director  
Statistics & Tourism Information Department  
Fax: +855 23 885003  
E-mail: kong@mot.gov.kh

2. Mr. Horth Vanny

Chief of Tourism Statistics Office  
Compile and data analysis  
Tel.: +855 12 827664