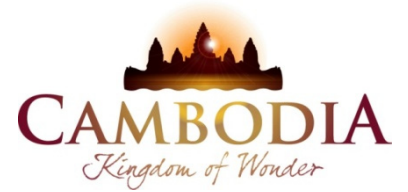




KINGDOM OF CAMBODIA
NATION RELIGION KING



TOURISM STATISTICS REPORT

July 2015

MINISTRY OF TOURISM

Statistics and Tourism Information Department

No. A3, Street 169, Sangkat Veal Vong, Khan 7 Makara, Phnom Penh, Cambodia.

Fax: +855 23 885003

E-mail: kong@mot.gov.kh

Web site: www.mot.gov.kh

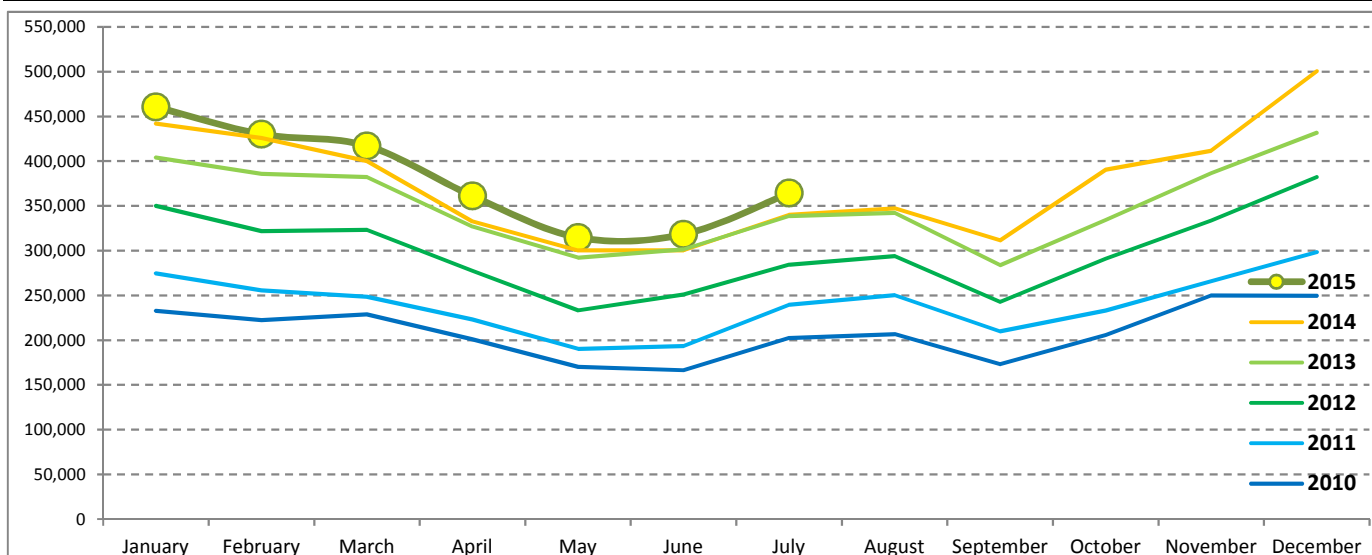
Tourism Highlights

International Tourist Arrivals, Average Length of Stay, Hotels Occupancy & Tourism Receipts 1993 - 2014

Years	Int'l Tourist Arrivals		Average Length	Hotels Occupancy	Tourism Receipts
	Number	Change (%)	of Stay (Days)	(%)	(Million US\$)
1993	118,183	-	N/A	N/A	N/A
1994	176,617	49.4	N/A	N/A	N/A
1995	219,680	24.4	8.00	37.00	100
1996	260,489	18.6	7.50	40.00	118
1997	218,843	-16.0	6.40	30.00	103
1998	286,524	30.9	5.20	40.00	166
1999	367,743	28.3	5.50	44.00	190
2000	466,365	26.8	5.50	45.00	228
2001	604,919	29.7	5.50	48.00	304
2002	786,524	30.0	5.80	50.00	379
2003	701,014	-10.9	5.50	50.00	347
2004	1,055,202	50.5	6.30	52.00	578
2005	1,421,615	34.7	6.30	52.00	832
2006	1,700,041	19.6	6.50	54.79	1,049
2007	2,015,128	18.5	6.50	54.79	1,400
2008	2,125,465	5.5	6.65	62.68	1,595
2009	2,161,577	1.7	6.45	63.57	1,561
2010	2,508,289	16.0	6.45	65.74	1,786
2011	2,881,862	14.9	6.50	66.15	1,912
2012	3,584,307	24.4	6.30	68.49	2,210
2013	4,210,165	17.5	6.75	69.53	2,547
2014	4,502,775	7.0	6.50	67.55	2,736

International Tourist Arrivals to Cambodia

Months	2010	2011	2012	2013	2014	2015	Change (%)				
							11/10	12/11	13/12	14/13	15*/14
Q1	683,692	778,467	995,210	1,172,072	1,267,922	1,307,836	13.9	27.8	17.8	8.2	3.1
January	232,590	274,471	350,257	404,106	442,045	460,577	18.0	27.6	15.4	9.4	4.2
February	222,354	255,499	321,870	385,760	425,801	430,207	14.9	26.0	19.8	10.4	1.0
March	228,748	248,497	323,083	382,206	400,076	417,052	8.6	30.0	18.3	4.7	4.2
Q2	537,464	606,562	761,442	920,527	933,446	994,154	12.9	25.5	20.9	1.4	6.5
April	200,965	223,032	277,304	327,000	332,690	361,139	11.0	24.3	17.9	1.7	8.6
May	170,164	190,258	233,220	292,115	300,302	314,748	11.8	22.6	25.3	2.8	4.8
June	166,335	193,272	250,918	301,412	300,454	318,267	16.2	29.8	20.1	-0.3	5.9
Q3	582,024	699,760	820,888	964,612	998,690	364,325	20.2	17.3	17.5	3.5	
July	202,349	239,527	284,282	338,761	340,091	364,325	18.4	18.7	19.2	0.4	7.1
August	206,563	250,429	293,859	342,064	347,211		21.2	17.3	16.4	1.5	
September	173,112	209,804	242,747	283,787	311,388		21.2	15.7	16.9	9.7	
Q4	705,109	797,073	1,006,767	1,152,954	1,302,717	0	13.0	26.3	14.5	13.0	
October	205,515	233,190	290,959	334,410	390,637		13.5	24.8	14.9	16.8	
November	249,892	265,539	333,482	386,737	411,501		6.3	25.6	16.0	6.4	
December	249,702	298,344	382,326	431,807	500,579		19.5	28.1	12.9	15.9	
Total	2,508,289	2,881,862	3,584,307	4,210,165	4,502,775	2,666,315	14.9	24.4	17.5	7.0	4.9



Source: Statistics and Tourism Information Department, MOT

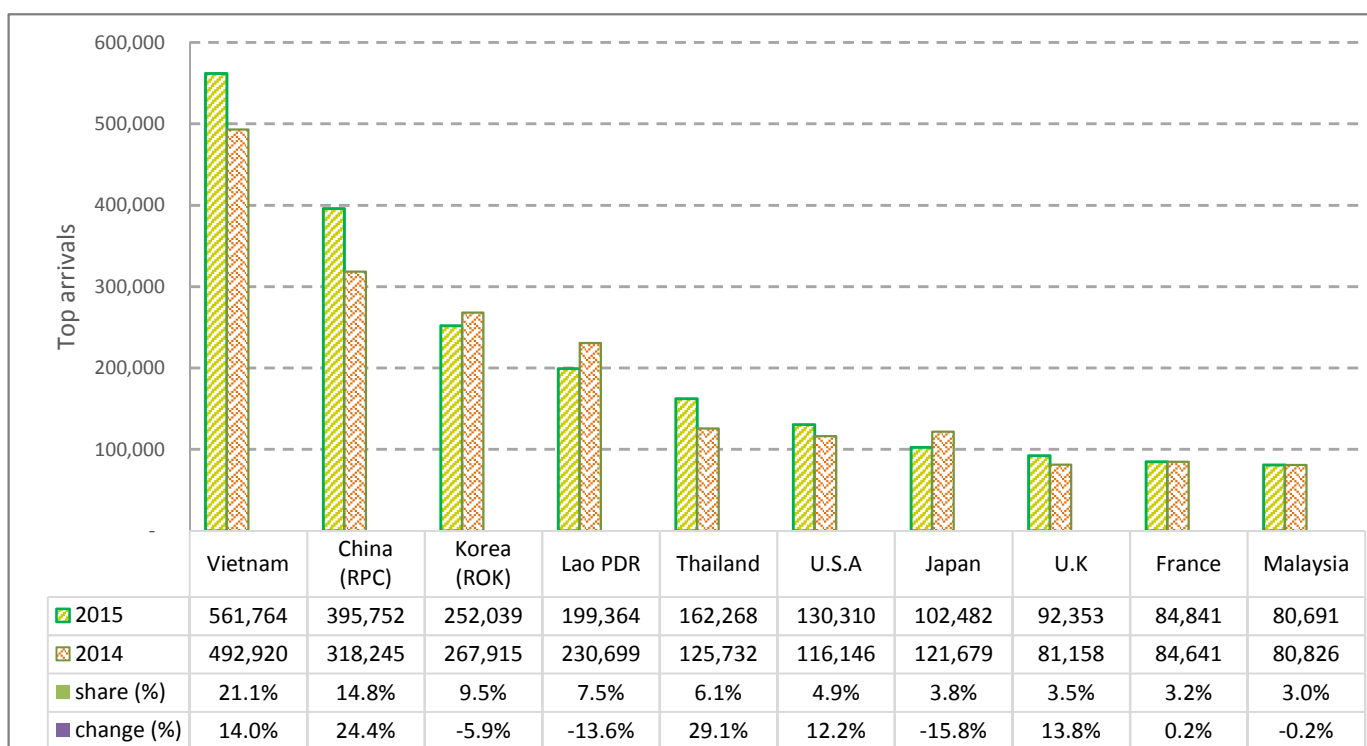
CAMBODIA: TOURISM STATISTICS REPORT IN THE FIRST SEVEN MONTHS 2015

I. INBOUND TOURISM

1. International tourist arrivals in January - July 2015

	Inbound tourism		share (%)		change (%)
	2014	2015	2014	2015	2015*/14
Air	1,306,535	1,424,536	51.4	53.4	9.0
Phnom Penh Int'l Airport (PNH)	522,233	605,557	20.5	22.7	16.0
Siem Reap Int'l Airport (REP)	784,302	818,979	30.9	30.7	4.4
Land and Water ways	1,234,924	1,241,779	48.6	46.6	0.6
Land	1,183,649	1,160,017	46.6	43.5	-2.0
Waterway	51,275	81,762	2.0	3.1	59.5
Total	2,541,459	2,666,315	100.0	100.0	4.9

2. Top ten markets arrivals in January - July 2015



II. OUTBOUND TOURISM

Outbound tourism in January - July 2015

	Outbound tourism		change (%)
	2014	2015	2015*/14
Cambodian Outbound Tourists	540,143	649,706	20.3
International Tourists Departure	2,523,054	2,560,288	1.5

III. INTERNAL TOURISM

Foreign visitor arrivals to the regions in January - July 2015

	Arrivals		share (%)		change (%)
	2014	2015	2014	2015	2015*/14
Phnom Penh & Surrounding	1,136,020	1,405,991	38.9	45.1	23.8
Siem Reap Angkor	1,405,439	1,260,324	48.1	40.4	-10.3
Coastal Areas	343,030	414,529	11.7	13.3	20.8
Eco-tourism Areas	37,484	38,829	1.3	1.2	3.6
Total	2,921,973	3,119,673	100.0	100.0	6.8

International Tourist Arrivals to Cambodia by Country of Residence in January - July 2015

(by all mean of transportations)

Regions Country of Residence	2014	2015			Total	Female	Share	Change
		Purpose of Visit					(%)	(%)
		Holiday	Business	Others			2015*	2015*/14
Grand Total	2,541,459	2,415,195	168,131	82,989	2,666,315	1,174,955	100.0	4.9
Asia and the Pacific	1,927,716	1,835,110	143,161	70,472	2,048,743	901,460	76.8	6.3
ASEAN (Southeast Asia)	1,050,961	999,456	53,076	62,922	1,115,454	500,323	41.8	6.1
Brunei Darussalam	548	396	16	74	486	207	0.0	-11.3
Indonesia	20,501	15,434	7,369	893	23,696	6,485	0.9	15.6
Lao PDR	230,699	194,280	90	4,994	199,364	114,641	7.5	-13.6
Malaysia	80,826	75,388	5,071	232	80,691	25,895	3.0	-0.2
Myanmar	3,453	4,593	309	339	5,241	2,262	0.2	51.8
Philippines	61,154	40,698	5,941	645	47,284	26,764	1.8	-22.7
Singapore	35,128	32,897	1,579	184	34,660	10,953	1.3	-1.3
Thailand	125,732	145,884	9,403	6,981	162,268	66,004	6.1	29.1
Vietnam	492,920	489,886	23,298	48,580	561,764	247,112	21.1	14.0
Northeast Asia	768,923	734,608	82,969	4,695	822,272	355,581	30.8	6.9
China	318,245	342,398	51,592	1,762	395,752	179,622	14.8	24.4
Hong Kong (China)	4,233	6,632	100	21	6,753	3,174	0.3	59.5
Japan	121,679	88,545	12,531	1,406	102,482	39,191	3.8	-15.8
Korea (ROK)	267,915	241,353	9,289	1,397	252,039	107,091	9.5	-5.9
Macau (China)		244	5	9	258	103	0.0	
Mongolia	236	237	15	15	267	149	0.0	13.1
Taiwan (China)	56,615	55,199	9,437	85	64,721	26,251	2.4	14.3
Southern Asia	18,852	19,228	2,687	1,121	23,036	6,431	0.9	22.2
Afghanistan	177	49	5	17	71	18	0.0	-59.9
Bangladesh	929	826	210	109	1,145	179	0.0	23.3
Bhutan	61	75	4	15	94	54	0.0	54.1
India	15,095	16,226	1,741	664	18,631	5,514	0.7	23.4
Nepal	937	992	170	173	1,335	319	0.1	42.5
Pakistan	677	501	213	78	792	138	0.0	17.0
Sri Lanka	976	559	344	65	968	209	0.0	-0.8
Oceania	87,151	80,169	4,020	1,258	85,447	38,107	3.2	-2.0
Australia	75,254	68,043	3,421	1,117	72,581	32,394	2.7	-3.6
Fiji	83	65	23	12	100	31	0.0	20.5
New Zealand	11,814	12,061	576	129	12,766	5,682	0.5	8.1
Other Asia & the Pacific	1,829	1,649	409	476	2,534	1,018	0.1	38.5
Europe	433,392	389,530	16,929	6,719	413,178	180,946	15.5	-4.7
Northern Europe	118,040	119,952	6,897	1,562	128,411	53,982	4.8	8.8
Denmark	8,457	7,535	213	114	7,862	3,393	0.3	-7.0
Finland	4,321	4,078	163	77	4,318	1,686	0.2	-0.1
Iceland	429	408	8	17	433	173	0.0	0.9
Ireland	6,191	6,607	223	79	6,909	3,073	0.3	11.6
Norway	6,450	6,041	134	54	6,229	2,785	0.2	-3.4
Sweden	11,034	9,895	274	138	10,307	4,186	0.4	-6.6
United Kingdom	81,158	85,388	5,882	1,083	92,353	38,686	3.5	13.8
Western Europe	177,352	172,587	6,936	2,803	182,326	79,006	6.8	2.8
Austria	5,538	5,865	141	71	6,077	2,524	0.2	9.7
Belgium	9,515	9,412	360	207	9,979	4,135	0.4	4.9
France	84,641	79,419	4,045	1,377	84,841	37,711	3.2	0.2
Germany	48,934	49,128	1,225	697	51,050	21,554	1.9	4.3
Luxembourg	290	373	5	10	388	169	0.0	33.8
Monaco	39	36	4	8	48	19	0.0	23.1
Netherlands	16,375	15,809	740	307	16,856	7,278	0.6	2.9
Switzerland	12,020	12,545	416	126	13,087	5,616	0.5	8.9
Central / Eastern Europe	100,911	58,227	1,541	1,242	61,010	30,424	2.3	-39.5
Bulgaria	714	878	17	106	1,001	443	0.0	40.2
Czech Republic	3,469	3,416	45	65	3,526	1,466	0.1	1.6
Estonia	1,052	1,106	24	16	1,146	494	0.0	8.9
Hungary	1,981	2,525	63	81	2,669	1,167	0.1	34.7
Kazakhstan	1,890	1,437	144	25	1,606	852	0.1	-15.0
Kyrgyzstan		82	10	8	100	45	0.0	
Latvia		457	18	31	506	235	0.0	
Lithuania	1,000	1,016	14	40	1,070	529	0.0	7.0
Poland	7,259	7,631	64	185	7,880	3,900	0.3	8.6
Romania	1,112	1,206	46	168	1,420	669	0.1	27.7
Russian Federation	76,725	33,556	890	219	34,665	18,005	1.3	-54.8
Slovakia	1,529	1,426	34	42	1,502	639	0.1	-1.8
Ukraine	3,837	3,061	131	241	3,433	1,661	0.1	-10.5
Uzbekistan	343	430	41	15	486	319	0.0	41.7

Source: Statistics and Tourism Information Department, MOT

International Tourist Arrivals to Cambodia by Country of Residence in January - July 2015

(by all mean of transportations)

Regions Country of Residence	2014	2015			Total	Female	Share	Change
		Purpose of Visit					(%)	(%)
		Holiday	Business	Others	2015*	2015*/14		
Grand Total	2,541,459	2,415,195	168,131	82,989	2,666,315	1,174,955	100.0	4.9
Southern Europe	35,557	37,336	1,292	803	39,431	16,646	1.5	10.9
Croatia	460	587	20	131	738	291	0.0	60.4
Greece	720	863	39	28	930	364	0.0	29.2
Italy	15,587	14,723	510	160	15,393	6,225	0.6	-1.2
Malta		245	6	13	264	101	0.0	
Portugal	2,061	2,643	98	76	2,817	1,268	0.1	36.7
Serbia	364	414	14	87	515	227	0.0	41.5
Slovenia	636	643	23	29	695	305	0.0	9.3
Spain	12,944	14,082	314	136	14,532	6,658	0.5	12.3
Turkey	2,785	3,136	268	143	3,547	1,207	0.1	27.4
Other Europe	1,532	1,428	263	309	2,000	888	0.1	30.5
Americas	169,976	179,147	7,031	5,119	191,297	87,855	7.2	12.5
North America	152,531	159,327	6,551	4,424	170,302	77,754	6.4	11.7
Canada	33,260	34,070	1,399	405	35,874	16,412	1.3	7.9
Mexico	3,125	4,035	34	49	4,118	2,079	0.2	31.8
United States	116,146	121,222	5,118	3,970	130,310	59,263	4.9	12.2
Central America	204	301	20	83	404	185	0.0	
Costa Rica	204	244	8	21	273	135	0.0	33.8
Honduras		25	7	36	68	27	0.0	
Jamaica		32	5	26	63	23	0.0	
South America	16,252	18,569	253	276	19,098	9,307	0.7	17.5
Argentina	4,244	5,159	26	26	5,211	2,519	0.2	22.8
Brazil	5,915	6,497	84	85	6,666	3,193	0.3	12.7
Chile	3,586	3,237	25	35	3,297	1,647	0.1	-8.1
Colombia	1,234	1,692	45	35	1,772	898	0.1	43.6
Ecuador	192	325	16	12	353	180	0.0	83.9
Peru	471	473	12	32	517	263	0.0	9.8
Uruguay	610	738	10	19	767	372	0.0	25.7
Venezuela		448	35	32	515	235	0.0	
Other Americas	989	950	207	336	1,493	609	0.1	51.0
Africa	3,241	3,811	674	458	4,943	1,901	0.2	52.5
North Africa	42	373	38	49	460	183	0.0	
Morocco		235	25	15	275	118	0.0	
Sudan	42	54	5	24	83	28	0.0	97.6
Tunisia		84	8	10	102	37	0.0	
Subsaharan Africa	2,976	3,240	585	325	4,150	1,599	0.2	39.4
Cameroon	85	119	8	20	147	36	0.0	72.9
Congo	27	31	3	20	54	16	0.0	100.0
Ghana	64	38	6	7	51	11	0.0	-20.3
Kenya	145	162	11	11	184	88	0.0	26.9
Liberia	15	23	4	6	33	8	0.0	120.0
Nigeria	338	260	326	29	615	72	0.0	82.0
South Africa	2,270	2,480	209	203	2,892	1,311	0.1	27.4
Tanzania		29	4	11	44	12	0.0	
Uganda	32	52	6	6	64	17	0.0	100.0
Zimbabwe		46	8	12	66	28	0.0	
Other Africa	223	198	51	84	333	119	0.0	49.3
Middle East	7,134	7,597	336	221	8,154	2,793	0.3	14.3
Egypt	179	281	42	12	335	80	0.0	87.2
Iran	326	283	19	8	310	101	0.0	-4.9
Iraq	46	61	5	9	75	10	0.0	63.0
Israel	5,482	5,281	157	20	5,458	2,264	0.2	-0.4
Jordan		179	19	9	207	45	0.0	
Kuwait	532	509	4	37	550	29	0.0	3.4
Oman	100	118	4	13	135	19	0.0	35.0
Palestine	46	26	5	8	39	7	0.0	-15.2
Qatar	18	63	4	15	82	27	0.0	355.6
Saudi Arabia	96	178	8	18	204	15	0.0	112.5
Syria		110	8	7	125	27	0.0	
United Arab Emirates	54	223	24	9	256	74	0.0	374.1
Yemen	104	104	6	10	120	21	0.0	15.4
Other Middle East	151	181	31	46	258	74	0.0	70.9

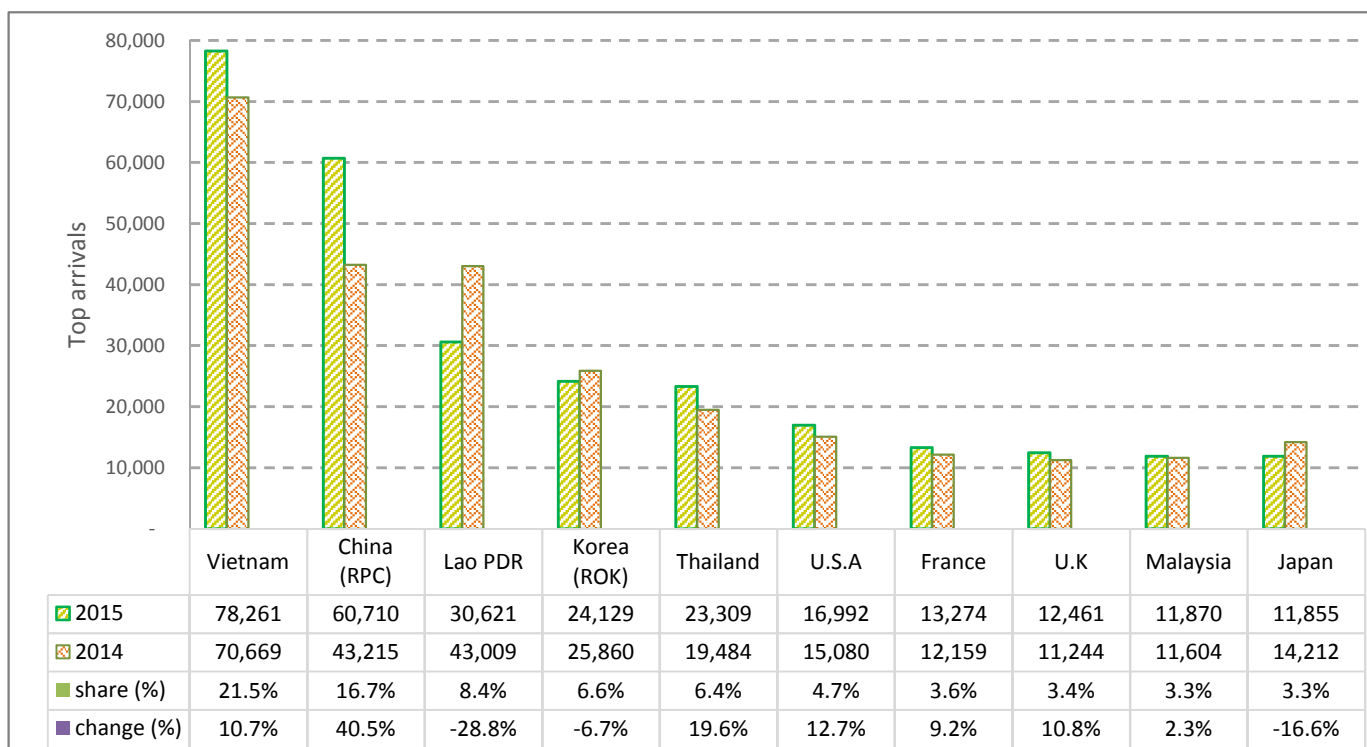
CAMBODIA: TOURISM STATISTICS REPORT IN JULY 2015

I. INBOUND TOURISM

1. International tourist arrivals in July 2015

	Inbound tourism		share (%)		change (%)
	2014	2015	2014	2015	2015*/14
Air	169,351	193,639	49.8	53.2	14.3
Phnom Penh Int'l Airport (PNH)	76,980	93,931	22.6	25.8	22.0
Siem Reap Int'l Airport (REP)	92,371	99,708	27.2	27.4	7.9
Land and Water ways	170,740	170,686	50.2	46.8	0.0
Land	164,703	160,973	48.4	44.2	-2.3
Waterway	6,037	9,713	1.8	2.7	60.9
Total	340,091	364,325	100.0	100.0	7.1

2. Top ten markets arrivals in July 2015



II. OUTBOUND TOURISM

Outbound tourism in July 2015

	Outbound tourism		change (%)
	2014	2015	2015*/14
Cambodian Outbound Tourists	85,357	96,692	13.3
International Tourists Departure	325,697	331,103	1.7

III. INTERNAL TOURISM

Foreign visitor arrivals to the regions in July 2015

	Arrivals		share (%)		change (%)
	2014	2015	2014	2015	2015*/14
Phnom Penh & Surrounding	174,196	209,683	45.5	51.3	20.4
Siem Reap Angkor	165,895	154,642	43.3	37.8	-6.8
Coastal Areas	39,485	41,208	10.3	10.1	4.4
Eco-tourism Areas	3,394	3,546	0.9	0.9	4.5
Total	382,970	409,079	100.0	100.0	6.8

International Tourist Arrivals to Cambodia by Country of Residence in July 2015

(by all mean of transportations)

Regions Country of Residence	2014	2015			Total	Female	Share	Change
		Purpose of Visit					(%)	(%)
		Holiday	Business	Others			2015*	2015*/14
Grand Total	340,091	335,139	25,839	3,347	364,325	160,742	100.0	7.1
Asia and the Pacific	267,037	260,370	22,338	1,840	284,548	124,375	78.1	6.6
ASEAN (Southeast Asia)	158,180	151,981	8,133	804	160,918	72,729	44.2	1.7
Brunei Darussalam	57	77	1	22	100	32	0.0	75.4
Indonesia	3,435	2,621	1,139	54	3,814	1,195	1.0	11.0
Lao PDR	43,009	30,511	13	97	30,621	16,348	8.4	-28.8
Malaysia	11,604	11,115	715	40	11,870	3,824	3.3	2.3
Myanmar	400	525	41	35	601	216	0.2	50.3
Philippines	4,698	6,730	801	58	7,589	4,346	2.1	61.5
Singapore	4,824	4,478	251	24	4,753	1,478	1.3	-1.5
Thailand	19,484	21,848	1,261	200	23,309	9,277	6.4	19.6
Vietnam	70,669	74,076	3,911	274	78,261	36,013	21.5	10.7
Northeast Asia	91,603	92,943	13,009	666	106,618	44,794	29.3	16.4
China	43,215	52,582	7,960	168	60,710	27,633	16.7	40.5
Hong Kong (China)	572	599	23	3	625	282	0.2	9.3
Japan	14,212	9,586	2,059	210	11,855	4,186	3.3	-16.6
Korea (ROK)	25,860	22,300	1,560	269	24,129	8,919	6.6	-6.7
Macau (China)		16	2	3	21	5	0.0	
Mongolia	49	18	4	3	25	16	0.0	-49.0
Taiwan (China)	7,695	7,842	1,401	10	9,253	3,753	2.5	20.2
Southern Asia	2,796	2,916	429	110	3,455	945	0.9	23.6
Afghanistan	4	11	1	5	17	7	0.0	325.0
Bangladesh	184	111	28	13	152	27	0.0	-17.4
Bhutan	4	2	1	3	6	5	0.0	50.0
India	2,262	2,450	298	44	2,792	795	0.8	23.4
Nepal	137	207	27	33	267	67	0.1	94.9
Pakistan	83	73	27	9	109	19	0.0	31.3
Sri Lanka	122	62	47	3	112	25	0.0	-8.2
Oceania	14,225	12,311	684	196	13,191	5,769	3.6	-7.3
Australia	12,032	10,191	575	180	10,946	4,777	3.0	-9.0
Fiji	5	24	2	2	28	9	0.0	460.0
New Zealand	2,188	2,096	107	14	2,217	983	0.6	1.3
Other Asia & the Pacific	233	219	83	64	366	138	0.1	57.1
Europe	51,246	51,160	2,294	723	54,177	24,842	14.9	5.7
Northern Europe	15,749	15,891	770	169	16,830	7,730	4.6	6.9
Denmark	1,153	1,046	35	22	1,103	473	0.3	-4.3
Finland	274	191	17	2	210	83	0.1	-23.4
Iceland	40	25	2	4	31	9	0.0	-22.5
Ireland	1,324	1,551	26	7	1,584	820	0.4	19.6
Norway	851	724	28	8	760	334	0.2	-10.7
Sweden	863	631	34	16	681	252	0.2	-21.1
United Kingdom	11,244	11,723	628	110	12,461	5,759	3.4	10.8
Western Europe	23,461	24,616	1,074	294	25,984	11,761	7.1	10.8
Austria	611	784	18	5	807	371	0.2	32.1
Belgium	2,015	2,163	74	26	2,263	1,019	0.6	12.3
France	12,159	12,515	606	153	13,274	6,156	3.6	9.2
Germany	3,817	3,796	187	64	4,047	1,681	1.1	6.0
Luxembourg	32	37	2	1	40	19	0.0	25.0
Monaco	5	5	1	2	8	2	0.0	60.0
Netherlands	3,264	3,603	123	32	3,758	1,752	1.0	15.1
Switzerland	1,558	1,713	63	11	1,787	761	0.5	14.7
Central / Eastern Europe	6,158	3,804	225	170	4,199	2,090	1.2	-31.8
Bulgaria	31	46	1	5	52	18	0.0	67.7
Czech Republic	365	214	5	9	228	102	0.1	-37.5
Estonia	94	30	3	1	34	18	0.0	-63.8
Hungary	87	198	3	5	206	86	0.1	136.8
Kazakhstan	132	104	29	6	139	65	0.0	5.3
Kyrgyzstan		8	1	2	11	4	0.0	
Latvia		21	4	3	28	16	0.0	
Lithuania	34	46	2	2	50	22	0.0	47.1
Poland	560	599	5	16	620	305	0.2	10.7
Romania	84	57	3	31	91	31	0.0	8.3
Russian Federation	4,372	2,099	134	54	2,287	1,209	0.6	-47.7
Slovakia	116	118	7	1	126	53	0.0	8.6
Ukraine	220	180	18	32	230	99	0.1	4.5
Uzbekistan	63	84	10	3	97	62	0.0	54.0

Source: Statistics and Tourism Information Department, MOT

International Tourist Arrivals to Cambodia by Country of Residence in July 2015

(by all mean of transportations)

Regions Country of Residence	2014	2015			Total	Female	Share	Change
		Purpose of Visit					(%)	(%)
		Holiday	Business	Others			2015*	2015*/14
Grand Total	340,091	335,139	25,839	3,347	364,325	160,742	100.0	7.1
Southern Europe	5,716	6,696	188	64	6,948	3,157	1.9	21.6
Croatia	34	49	3	11	63	27	0.0	85.3
Greece	79	99	3	2	104	48	0.0	31.6
Italy	1,510	1,689	81	14	1,784	738	0.5	18.1
Malta		27	2	1	30	19	0.0	
Portugal	298	388	8	3	399	177	0.1	33.9
Serbia	21	22	4	2	28	13	0.0	33.3
Slovenia	63	72	9	2	83	41	0.0	31.7
Spain	3,394	4,026	55	14	4,095	1,968	1.1	20.7
Turkey	317	324	23	15	362	126	0.1	14.2
Other Europe	162	153	37	26	216	104	0.1	33.3
Americas	20,773	22,081	1,062	720	23,863	10,971	6.5	14.9
North America	19,256	19,941	995	644	21,580	9,944	5.9	12.1
Canada	3,496	3,339	195	58	3,592	1,675	1.0	2.7
Mexico	680	974	5	17	996	526	0.3	46.5
United States	15,080	15,628	795	569	16,992	7,743	4.7	12.7
Central America	20	45	3	12	60	27	0.0	
Costa Rica	20	33	1	4	38	18	0.0	90.0
Honduras		4	1	2	7	1	0.0	
Jamaica		8	1	6	15	8	0.0	
South America	1,380	1,975	48	39	2,062	927	0.6	49.4
Argentina	184	342	1	3	346	158	0.1	88.0
Brazil	520	661	7	2	670	298	0.2	28.8
Chile	310	299	6	2	307	141	0.1	-1.0
Colombia	235	264	6	15	285	128	0.1	21.3
Ecuador	26	29	1	1	31	14	0.0	19.2
Peru	84	78	1	6	85	40	0.0	1.2
Uruguay	21	20	1	1	22	9	0.0	4.8
Venezuela		282	25	9	316	139	0.1	
Other Americas	117	120	16	25	161	73	0.0	37.6
Africa	483	589	90	36	715	269	0.2	48.0
North Africa	3	42	7	5	54	20	0.0	
Morocco		29	5	2	36	16	0.0	
Sudan	3	7	1	2	10	2	0.0	
Tunisia		6	1	1	8	2	0.0	
Subsaharan Africa	461	524	79	22	625	236	0.2	35.6
Cameroon	14	43	1	2	46	20	0.0	228.6
Congo	3	11	1	3	15	6	0.0	400.0
Ghana	1	8	1	1	10	3	0.0	900.0
Kenya	29	21	2	2	25	11	0.0	-13.8
Liberia	2	7	2	1	10	3	0.0	
Nigeria	50	31	39	2	72	3	0.0	44.0
South Africa	359	378	30	8	416	180	0.1	15.9
Tanzania		4	1	1	6	3	0.0	
Uganda	3	17	1	1	19	6	0.0	533.3
Zimbabwe		4	1	1	6	1	0.0	
Other Africa	19	23	4	9	36	13	0.0	89.5
Middle East	552	939	55	28	1,022	285	0.3	85.1
Egypt	27	36	5	1	42	7	0.0	55.6
Iran	39	60	1	2	63	29	0.0	61.5
Iraq	4	14	1	1	16	2	0.0	300.0
Israel	386	412	16	2	430	143	0.1	11.4
Jordan		19	2	1	22	6	0.0	
Kuwait	32	96	1	6	103	4	0.0	221.9
Oman	18	13	1	2	16	1	0.0	-11.1
Palestine	7	4	0	1	5	1	0.0	-28.6
Qatar	1	6	1	1	8	2	0.0	
Saudi Arabia	7	26	1	1	28	2	0.0	300.0
Syria		18	1	1	20	5	0.0	
United Arab Emirates	17	181	21	2	204	68	0.1	1100.0
Yemen	3	17	1	1	19	3	0.0	533.3
Other Middle East	11	37	3	6	46	12	0.0	318.2