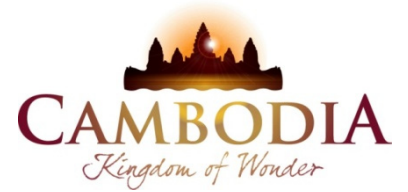




KINGDOM OF CAMBODIA  
NATION RELIGION KING



# TOURISM STATISTICS REPORT

# November 2015

**MINISTRY OF TOURISM**

Statistics and Tourism Information Department

No. A3, Street 169, Sangkat Veal Vong, Khan 7 Makara, Phnom Penh, Cambodia.

Fax: +855 23 885003

E-mail: [kong@mot.gov.kh](mailto:kong@mot.gov.kh)

Web site: [www.mot.gov.kh](http://www.mot.gov.kh)

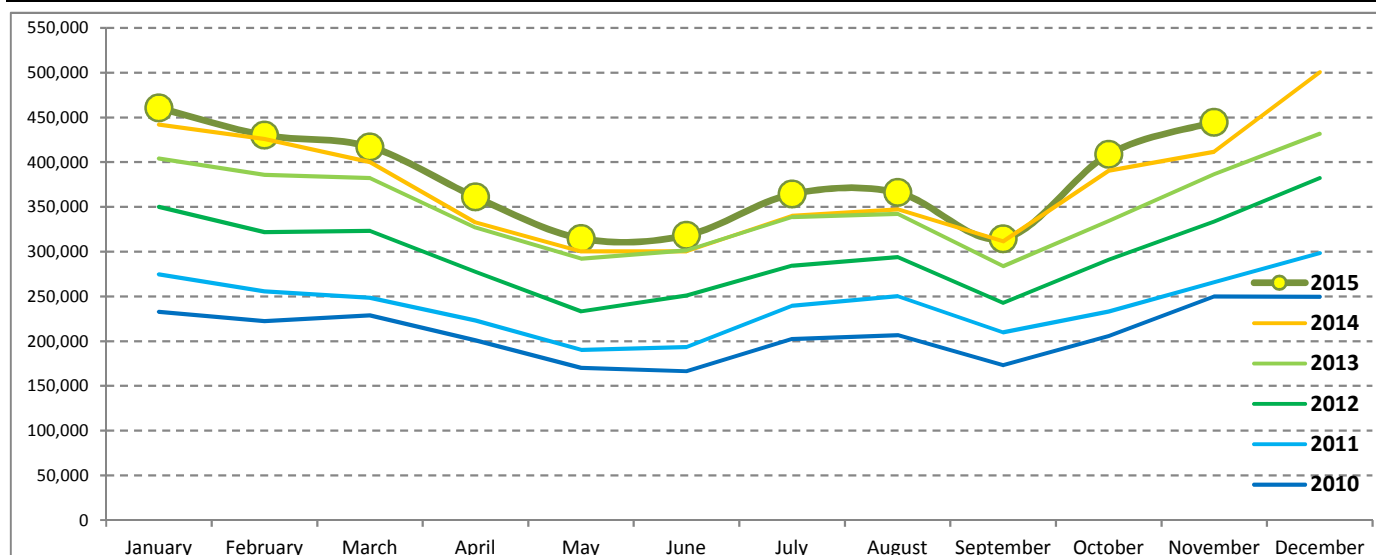
## Tourism Highlights

### International Tourist Arrivals, Average Length of Stay, Hotels Occupancy & Tourism Receipts 1993 - 2014

Years	Int'l Tourist Arrivals		Average Length	Hotels Occupancy	Tourism Receipts
	Number	Change (%)	of Stay (Days)	(%)	(Million US\$)
1993	118,183	-	N/A	N/A	N/A
1994	176,617	49.4	N/A	N/A	N/A
1995	219,680	24.4	8.00	37.00	100
1996	260,489	18.6	7.50	40.00	118
1997	218,843	-16.0	6.40	30.00	103
1998	286,524	30.9	5.20	40.00	166
1999	367,743	28.3	5.50	44.00	190
2000	466,365	26.8	5.50	45.00	228
2001	604,919	29.7	5.50	48.00	304
2002	786,524	30.0	5.80	50.00	379
2003	701,014	-10.9	5.50	50.00	347
2004	1,055,202	50.5	6.30	52.00	578
2005	1,421,615	34.7	6.30	52.00	832
2006	1,700,041	19.6	6.50	54.79	1,049
2007	2,015,128	18.5	6.50	54.79	1,400
2008	2,125,465	5.5	6.65	62.68	1,595
2009	2,161,577	1.7	6.45	63.57	1,561
2010	2,508,289	16.0	6.45	65.74	1,786
2011	2,881,862	14.9	6.50	66.15	1,912
2012	3,584,307	24.4	6.30	68.49	2,210
2013	4,210,165	17.5	6.75	69.53	2,547
2014	4,502,775	7.0	6.50	67.55	2,736

### International Tourist Arrivals to Cambodia

Months	2010	2011	2012	2013	2014	2015	Change (%)				
							11/10	12/11	13/12	14/13	15*/14
<b>Q1</b>	<b>683,692</b>	<b>778,467</b>	<b>995,210</b>	<b>1,172,072</b>	<b>1,267,922</b>	<b>1,307,836</b>	<b>13.9</b>	<b>27.8</b>	<b>17.8</b>	<b>8.2</b>	<b>3.1</b>
January	232,590	274,471	350,257	404,106	442,045	460,577	18.0	27.6	15.4	9.4	4.2
February	222,354	255,499	321,870	385,760	425,801	430,207	14.9	26.0	19.8	10.4	1.0
March	228,748	248,497	323,083	382,206	400,076	417,052	8.6	30.0	18.3	4.7	4.2
<b>Q2</b>	<b>537,464</b>	<b>606,562</b>	<b>761,442</b>	<b>920,527</b>	<b>933,446</b>	<b>994,154</b>	<b>12.9</b>	<b>25.5</b>	<b>20.9</b>	<b>1.4</b>	<b>6.5</b>
April	200,965	223,032	277,304	327,000	332,690	361,139	11.0	24.3	17.9	1.7	8.6
May	170,164	190,258	233,220	292,115	300,302	314,748	11.8	22.6	25.3	2.8	4.8
June	166,335	193,272	250,918	301,412	300,454	318,267	16.2	29.8	20.1	-0.3	5.9
<b>Q3</b>	<b>582,024</b>	<b>699,760</b>	<b>820,888</b>	<b>964,612</b>	<b>998,690</b>	<b>1,044,880</b>	<b>20.2</b>	<b>17.3</b>	<b>17.5</b>	<b>3.5</b>	<b>4.6</b>
July	202,349	239,527	284,282	338,761	340,091	364,325	18.4	18.7	19.2	0.4	7.1
August	206,563	250,429	293,859	342,064	347,211	366,096	21.2	17.3	16.4	1.5	5.4
September	173,112	209,804	242,747	283,787	311,388	314,459	21.2	15.7	16.9	9.7	1.0
<b>Q4</b>	<b>705,109</b>	<b>797,073</b>	<b>1,006,767</b>	<b>1,152,954</b>	<b>1,302,717</b>	<b>853,562</b>	<b>13.0</b>	<b>26.3</b>	<b>14.5</b>	<b>13.0</b>	
October	205,515	233,190	290,959	334,410	390,637	408,922	13.5	24.8	14.9	16.8	4.7
November	249,892	265,539	333,482	386,737	411,501	444,640	6.3	25.6	16.0	6.4	8.1
December	249,702	298,344	382,326	431,807	500,579		19.5	28.1	12.9	15.9	
<b>Total</b>	<b>2,508,289</b>	<b>2,881,862</b>	<b>3,584,307</b>	<b>4,210,165</b>	<b>4,502,775</b>	<b>4,200,432</b>	<b>14.9</b>	<b>24.4</b>	<b>17.5</b>	<b>7.0</b>	<b>5.0</b>



Source: Statistics and Tourism Information Department, MOT

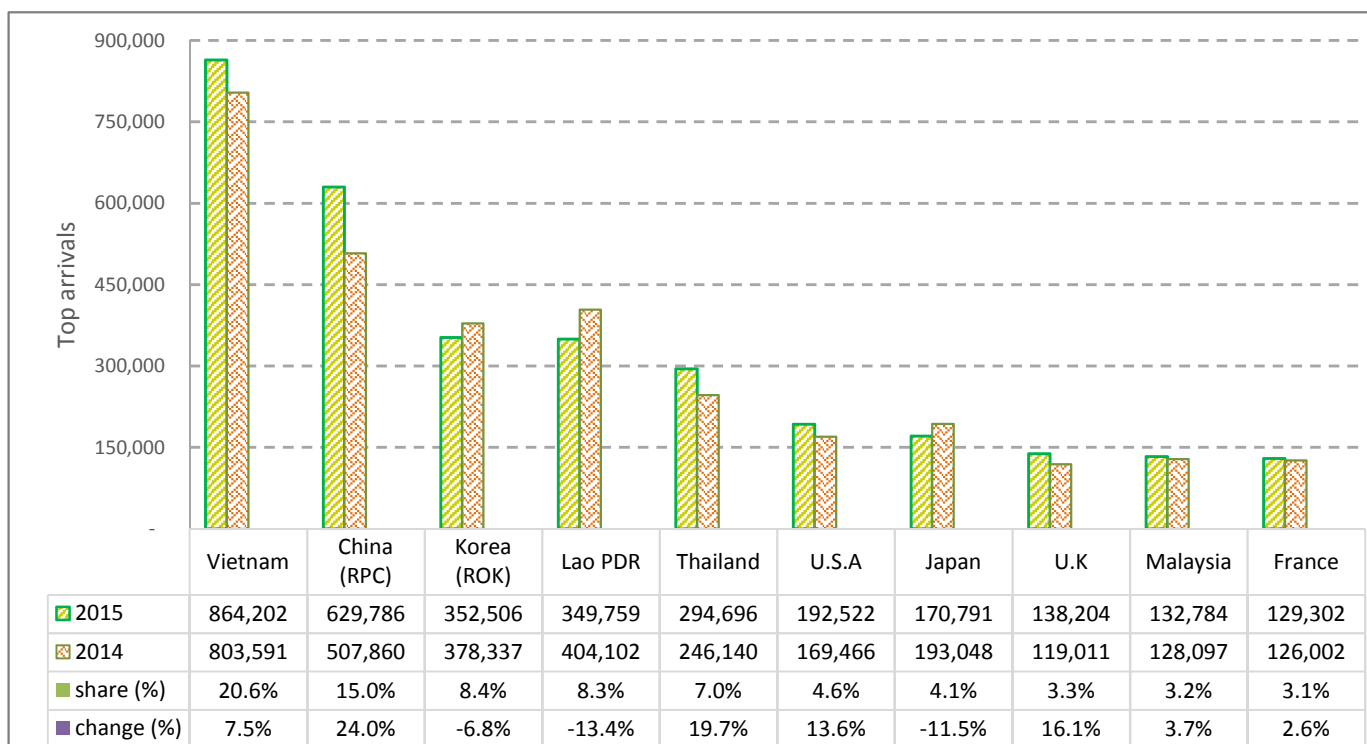
# CAMBODIA: TOURISM STATISTICS REPORT IN THE FIRST ELEVEN MONTHS 2015

## I. INBOUND TOURISM

### 1. International tourist arrivals in January - November 2015

	Inbound tourism		share (%)		change (%)
	2014	2015	2014	2015	2015*/14
<b>Air</b>	<b>2,027,877</b>	<b>2,220,944</b>	<b>50.7</b>	<b>52.9</b>	<b>9.5</b>
Phnom Penh Int'l Airport (PNH)	825,605	961,931	20.6	22.9	16.5
Siem Reap Int'l Airport (REP)	1,202,272	1,259,013	30.0	30.0	4.7
<b>Land and Water ways</b>	<b>1,974,319</b>	<b>1,979,488</b>	<b>49.3</b>	<b>47.1</b>	<b>0.3</b>
Land	1,891,362	1,852,212	47.3	44.1	-2.1
Waterway	82,957	127,276	2.1	3.0	53.4
<b>Total</b>	<b>4,002,196</b>	<b>4,200,432</b>	<b>100.0</b>	<b>100.0</b>	<b>5.0</b>

### 2. Top ten markets arrivals in January - November 2015



## II. OUTBOUND TOURISM

### Outbound tourism in January - November 2015

	Outbound tourism		change (%)
	2014	2015	2015*/14
Cambodian Outbound Tourists	876,072	1,094,598	24.9
International Tourists Departure	3,808,120	3,839,483	0.8

## III. INTERNAL TOURISM

### Foreign visitor arrivals to the regions in January - November 2015

	Arrivals		share (%)		change (%)
	2014	2015	2014	2015	2015*/14
Phnom Penh & Surrounding	1,901,075	2,298,786	41.6	47.7	20.9
Siem Reap Angkor	2,101,121	1,901,646	45.9	39.5	-9.5
Coastal Areas	518,418	562,446	11.3	11.7	8.5
Eco-tourism Areas	54,490	56,476	1.2	1.2	3.6
<b>Total</b>	<b>4,575,104</b>	<b>4,819,354</b>	<b>100.0</b>	<b>100.0</b>	<b>5.3</b>

## International Tourist Arrivals to Cambodia by Country of Residence in January - November 2015

(by all mean of transportations)

Regions Country of Residence	2014	2015			Total	Female	Share	Change
		Purpose of Visit					(%)	(%)
		Holiday	Business	Others			2015*	2015*/14
<b>Grand Total</b>	<b>4,002,196</b>	<b>3,780,210</b>	<b>276,265</b>	<b>143,957</b>	<b>4,200,432</b>	<b>1,770,834</b>	<b>100.0</b>	<b>5.0</b>
<b>Asia and the Pacific</b>	<b>3,107,345</b>	<b>2,913,611</b>	<b>236,559</b>	<b>116,511</b>	<b>3,266,681</b>	<b>1,357,339</b>	<b>77.8</b>	<b>5.1</b>
<b>ASEAN (Southeast Asia)</b>	<b>1,761,644</b>	<b>1,632,816</b>	<b>88,971</b>	<b>98,369</b>	<b>1,820,156</b>	<b>743,299</b>	<b>43.3</b>	<b>3.3</b>
Brunei Darussalam	846	609	22	109	740	312	0.0	-12.5
Indonesia	32,083	24,367	11,823	1,432	37,622	10,062	0.9	17.3
Lao PDR	404,102	342,179	148	7,432	349,759	150,184	8.3	-13.4
Malaysia	128,097	123,850	8,077	857	132,784	42,207	3.2	3.7
Myanmar	5,355	7,064	506	436	8,006	3,398	0.2	49.5
Philippines	83,470	63,445	9,537	1,966	74,948	41,728	1.8	-10.2
Singapore	57,960	54,283	2,612	504	57,399	17,933	1.4	-1.0
Thailand	246,140	263,825	15,680	15,191	294,696	113,933	7.0	19.7
Vietnam	803,591	753,194	40,566	70,442	864,202	363,542	20.6	7.5
<b>Northeast Asia</b>	<b>1,176,004</b>	<b>1,118,466</b>	<b>136,206</b>	<b>10,903</b>	<b>1,265,575</b>	<b>540,500</b>	<b>30.1</b>	<b>7.6</b>
China	507,860	540,651	84,584	4,551	629,786	282,080	15.0	24.0
Hong Kong (China)	7,886	11,769	173	41	11,983	5,543	0.3	52.0
Japan	193,048	147,368	20,439	2,984	170,791	65,780	4.1	-11.5
Korea (ROK)	378,337	334,060	15,471	2,975	352,506	147,124	8.4	-6.8
Macau (China)		326	9	17	352	144	0.0	
Mongolia	328	342	30	30	402	221	0.0	22.6
Taiwan (China)	88,545	83,950	15,500	305	99,755	39,608	2.4	12.7
<b>Southern Asia</b>	<b>31,713</b>	<b>32,523</b>	<b>4,442</b>	<b>2,378</b>	<b>39,343</b>	<b>10,594</b>	<b>0.9</b>	<b>24.1</b>
Afghanistan	206	65	8	24	97	23	0.0	-52.9
Bangladesh	1,886	1,384	333	194	1,911	295	0.0	1.3
Bhutan	93	143	8	23	174	70	0.0	87.1
India	25,156	27,507	2,873	1,668	32,048	9,052	0.8	27.4
Nepal	1,564	1,509	286	204	1,999	527	0.0	27.8
Pakistan	1,157	865	361	133	1,359	247	0.0	17.5
Sri Lanka	1,651	1,050	573	132	1,755	380	0.0	6.3
<b>Oceania</b>	<b>134,620</b>	<b>126,351</b>	<b>6,446</b>	<b>3,520</b>	<b>136,317</b>	<b>60,774</b>	<b>3.2</b>	<b>1.3</b>
Australia	116,370	107,913	5,441	2,990	116,344	51,933	2.8	0.0
Fiji	133	112	42	20	174	56	0.0	30.8
New Zealand	18,117	18,326	963	510	19,799	8,785	0.5	9.3
Other Asia & the Pacific	3,364	3,455	494	1,341	5,290	2,172	0.1	57.3
<b>Europe</b>	<b>633,480</b>	<b>593,527</b>	<b>26,811</b>	<b>13,339</b>	<b>633,677</b>	<b>278,591</b>	<b>15.1</b>	<b>0.0</b>
<b>Northern Europe</b>	<b>168,287</b>	<b>175,588</b>	<b>10,052</b>	<b>2,373</b>	<b>188,013</b>	<b>79,272</b>	<b>4.5</b>	<b>11.7</b>
Denmark	10,684	9,700	351	207	10,258	4,358	0.2	-4.0
Finland	5,941	5,544	285	133	5,962	2,346	0.1	0.4
Iceland	744	622	13	27	662	248	0.0	-11.0
Ireland	8,747	9,739	354	105	10,198	4,565	0.2	16.6
Norway	8,735	8,235	217	106	8,558	3,734	0.2	-2.0
Sweden	14,425	13,421	514	236	14,171	5,748	0.3	-1.8
United Kingdom	119,011	128,327	8,318	1,559	138,204	58,273	3.3	16.1
<b>Western Europe</b>	<b>263,566</b>	<b>260,166</b>	<b>11,680</b>	<b>6,660</b>	<b>278,506</b>	<b>120,970</b>	<b>6.6</b>	<b>5.7</b>
Austria	7,727	8,473	238	110	8,821	3,722	0.2	14.2
Belgium	14,257	14,405	602	396	15,403	6,447	0.4	8.0
France	126,002	118,153	6,874	4,275	129,302	57,263	3.1	2.6
Germany	74,099	76,325	2,087	1,097	79,509	33,975	1.9	7.3
Luxembourg	437	553	10	18	581	240	0.0	33.0
Monaco	96	55	7	15	77	27	0.0	-19.8
Netherlands	23,619	24,077	1,186	465	25,728	11,067	0.6	8.9
Switzerland	17,329	18,125	676	284	19,085	8,229	0.5	10.1
<b>Central / Eastern Europe</b>	<b>133,082</b>	<b>82,576</b>	<b>2,583</b>	<b>2,089</b>	<b>87,248</b>	<b>43,466</b>	<b>2.1</b>	<b>-34.4</b>
Bulgaria	964	1,330	34	134	1,498	681	0.0	55.4
Czech Republic	4,722	4,776	74	92	4,942	2,103	0.1	4.7
Estonia	1,630	1,542	41	28	1,611	708	0.0	-1.2
Hungary	2,923	3,463	117	125	3,705	1,625	0.1	26.8
Kazakhstan	2,454	1,712	249	37	1,998	1,032	0.0	-18.6
Kyrgyzstan		105	20	18	143	59	0.0	
Latvia		830	24	44	898	413	0.0	
Lithuania	1,433	1,569	26	45	1,640	804	0.0	14.4
Poland	11,105	11,985	133	245	12,363	6,069	0.3	11.3
Romania	1,678	1,777	72	229	2,078	987	0.0	23.8
Russian Federation	98,362	46,831	1,462	692	48,985	25,421	1.2	-50.2
Slovakia	2,155	1,948	52	58	2,058	879	0.0	-4.5
Ukraine	5,123	4,138	208	312	4,658	2,254	0.1	-9.1
Uzbekistan	533	570	71	30	671	431	0.0	25.9

Source: Statistics and Tourism Information Department, MOT

## International Tourist Arrivals to Cambodia by Country of Residence in January - November 2015

(by all mean of transportations)

Regions Country of Residence	2014	2015			Total	Female	Share	Change
		Purpose of Visit					(%)	(%)
		Holiday	Business	Others			2015*	2015*/14
<b>Grand Total</b>	<b>4,002,196</b>	<b>3,780,210</b>	<b>276,265</b>	<b>143,957</b>	<b>4,200,432</b>	<b>1,770,834</b>	<b>100.0</b>	<b>5.0</b>
<b>Southern Europe</b>	<b>65,823</b>	<b>72,418</b>	<b>2,183</b>	<b>1,238</b>	<b>75,839</b>	<b>33,051</b>	<b>1.8</b>	<b>15.2</b>
Croatia	676	901	33	184	1,118	441	0.0	65.4
Greece	1,079	1,294	65	46	1,405	547	0.0	30.2
Italy	25,918	26,788	885	302	27,975	11,683	0.7	7.9
Malta		380	10	26	416	162	0.0	
Portugal	3,969	4,970	163	97	5,230	2,378	0.1	31.8
Serbia	624	544	23	119	686	283	0.0	9.9
Slovenia	841	998	44	47	1,089	474	0.0	29.5
Spain	28,461	31,927	511	211	32,649	15,212	0.8	14.7
Turkey	4,255	4,616	449	206	5,271	1,871	0.1	23.9
Other Europe	2,722	2,779	313	979	4,071	1,832	0.1	49.6
<b>Americas</b>	<b>245,424</b>	<b>255,429</b>	<b>11,342</b>	<b>12,955</b>	<b>279,726</b>	<b>127,693</b>	<b>6.7</b>	<b>14.0</b>
<b>North America</b>	<b>220,580</b>	<b>227,268</b>	<b>10,659</b>	<b>11,607</b>	<b>249,534</b>	<b>113,397</b>	<b>5.9</b>	<b>13.1</b>
Canada	46,288	47,038	2,235	1,466	50,739	23,244	1.2	9.6
Mexico	4,826	6,122	54	97	6,273	3,360	0.1	30.0
United States	169,466	174,108	8,370	10,044	192,522	86,793	4.6	13.6
<b>Central America</b>	<b>356</b>	<b>457</b>	<b>32</b>	<b>143</b>	<b>632</b>	<b>260</b>	<b>0.0</b>	
Costa Rica	356	345	14	35	394	181	0.0	10.7
Honduras		37	10	59	106	41	0.0	
Jamaica		75	8	49	132	38	0.0	
<b>South America</b>	<b>22,559</b>	<b>25,765</b>	<b>408</b>	<b>428</b>	<b>26,601</b>	<b>12,860</b>	<b>0.6</b>	<b>17.9</b>
Argentina	5,382	6,979	46	44	7,069	3,367	0.2	31.3
Brazil	8,503	8,989	146	126	9,261	4,427	0.2	8.9
Chile	4,893	4,484	41	46	4,571	2,289	0.1	-6.6
Colombia	1,965	2,495	74	63	2,632	1,314	0.1	33.9
Ecuador	314	456	22	23	501	248	0.0	59.6
Peru	783	879	24	45	948	467	0.0	21.1
Uruguay	719	906	14	38	958	449	0.0	33.2
Venezuela		577	41	43	661	299	0.0	
Other Americas	1,929	1,939	243	777	2,959	1,176	0.1	53.4
<b>Africa</b>	<b>5,090</b>	<b>5,884</b>	<b>1,034</b>	<b>719</b>	<b>7,637</b>	<b>2,876</b>	<b>0.2</b>	<b>50.0</b>
<b>North Africa</b>	<b>71</b>	<b>600</b>	<b>57</b>	<b>86</b>	<b>743</b>	<b>273</b>	<b>0.0</b>	
Morocco		383	38	27	448	180	0.0	
Sudan	71	78	8	37	123	39	0.0	73.2
Tunisia		139	11	22	172	54	0.0	
<b>Subsaharan Africa</b>	<b>4,633</b>	<b>4,868</b>	<b>919</b>	<b>472</b>	<b>6,259</b>	<b>2,379</b>	<b>0.1</b>	<b>35.1</b>
Cameroon	123	139	13	33	185	52	0.0	50.4
Congo	47	62	8	26	96	24	0.0	104.3
Ghana	87	62	12	12	86	18	0.0	-1.1
Kenya	220	235	17	30	282	133	0.0	28.2
Liberia	32	34	7	11	52	12	0.0	62.5
Nigeria	590	432	512	44	988	108	0.0	67.5
South Africa	3,469	3,701	319	259	4,279	1,941	0.1	23.3
Tanzania		52	7	21	80	21	0.0	
Uganda	65	87	7	15	109	30	0.0	67.7
Zimbabwe		64	17	21	102	40	0.0	
Other Africa	386	416	58	161	635	224	0.0	64.5
<b>Middle East</b>	<b>10,857</b>	<b>11,759</b>	<b>519</b>	<b>433</b>	<b>12,711</b>	<b>4,335</b>	<b>0.3</b>	<b>17.1</b>
Egypt	297	426	67	28	521	138	0.0	75.4
Iran	595	383	38	13	434	139	0.0	-27.1
Iraq	99	109	13	23	145	29	0.0	46.5
Israel	8,127	8,017	244	46	8,307	3,435	0.2	2.2
Jordan		258	36	21	315	57	0.0	
Kuwait	836	824	8	49	881	46	0.0	5.4
Oman	139	168	5	21	194	30	0.0	39.6
Palestine	62	51	8	15	74	10	0.0	19.4
Qatar	59	76	7	24	107	32	0.0	81.4
Saudi Arabia	151	245	11	31	287	24	0.0	90.1
Syria		210	9	15	234	37	0.0	
United Arab Emirates	91	300	28	27	355	88	0.0	290.1
Yemen	131	316	8	25	349	100	0.0	166.4
Other Middle East	270	376	37	95	508	170	0.0	88.1

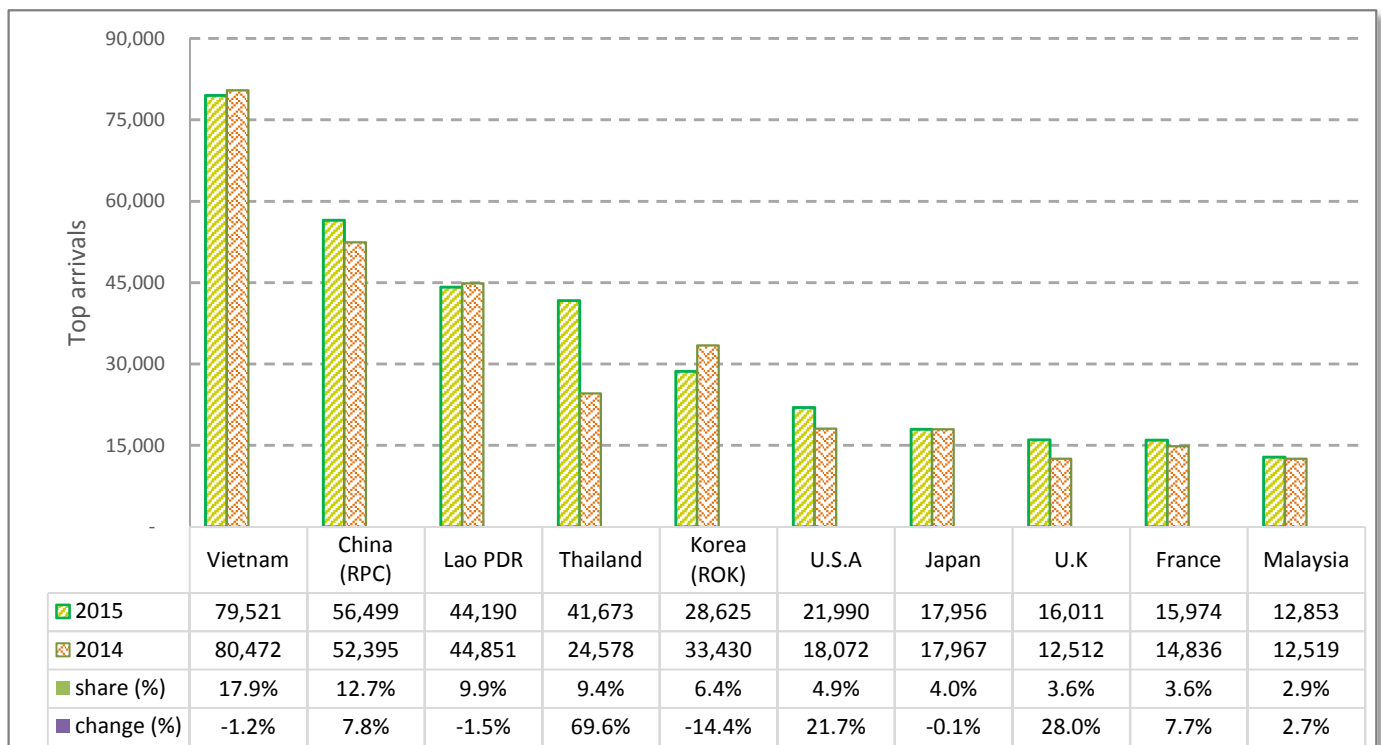
# CAMBODIA: TOURISM STATISTICS REPORT IN NOVEMBER 2015

## I. INBOUND TOURISM

### 1. International tourist arrivals in November 2015

	Inbound tourism		share (%)		change (%)
	2014	2015	2014	2015	2015*/14
<b>Air</b>	<b>217,125</b>	<b>234,678</b>	<b>52.8</b>	<b>52.8</b>	<b>8.1</b>
Phnom Penh Int'l Airport (PNH)	87,488	97,726	21.3	22.0	11.7
Siem Reap Int'l Airport (REP)	129,637	136,952	31.5	30.8	5.6
<b>Land and Water ways</b>	<b>194,376</b>	<b>209,962</b>	<b>47.2</b>	<b>47.2</b>	<b>8.0</b>
Land	185,244	195,897	45.0	44.1	5.8
Waterway	9,132	14,065	2.2	3.2	54.0
<b>Total</b>	<b>411,501</b>	<b>444,640</b>	<b>100.0</b>	<b>100.0</b>	<b>8.1</b>

### 2. Top ten markets arrivals in November 2015



## II. OUTBOUND TOURISM

### Outbound tourism in November 2015

	Outbound tourism		change (%)
	2014	2015	2015*/14
Cambodian Outbound Tourists	86,560	108,859	25.8
International Tourists Departure	356,684	350,634	-1.7

## III. INTERNAL TOURISM

### Foreign visitor arrivals to the regions in November 2015

	Arrivals		share (%)		change (%)
	2014	2015	2014	2015	2015*/14
Phnom Penh & Surrounding	199,298	244,128	42.8	47.9	22.5
Siem Reap Angkor	212,203	200,512	45.5	39.3	-5.5
Coastal Areas	48,538	58,684	10.4	11.5	20.9
Eco-tourism Areas	6,064	6,365	1.3	1.2	5.0
<b>Total</b>	<b>466,103</b>	<b>509,689</b>	<b>100.0</b>	<b>100.0</b>	<b>9.4</b>

## International Tourist Arrivals to Cambodia by Country of Residence in November 2015

(by all mean of transportations)

Regions Country of Residence	2014	2015			Total	Female	Share	Change
		Purpose of Visit					(%)	(%)
		Holiday	Business	Others			2015*	2015*/14
<b>Grand Total</b>	<b>411,501</b>	<b>400,547</b>	<b>26,585</b>	<b>17,508</b>	<b>444,640</b>	<b>185,665</b>	<b>100.0</b>	<b>8.1</b>
<b>Asia and the Pacific</b>	<b>309,895</b>	<b>298,724</b>	<b>22,664</b>	<b>8,124</b>	<b>329,512</b>	<b>133,086</b>	<b>74.1</b>	<b>6.3</b>
<b>ASEAN (Southeast Asia)</b>	<b>179,719</b>	<b>183,200</b>	<b>9,273</b>	<b>4,423</b>	<b>196,896</b>	<b>77,550</b>	<b>44.3</b>	<b>9.6</b>
Brunei Darussalam	101	67	1	7	75	20	0.0	-25.7
Indonesia	3,120	2,263	1,208	52	3,523	962	0.8	12.9
Lao PDR	44,851	43,771	13	406	44,190	12,555	9.9	-1.5
Malaysia	12,519	11,677	764	412	12,853	4,351	2.9	2.7
Myanmar	655	713	52	50	815	328	0.2	24.4
Philippines	5,960	6,109	898	64	7,071	4,001	1.6	18.6
Singapore	7,463	6,771	252	152	7,175	2,467	1.6	-3.9
Thailand	24,578	38,597	1,598	1,478	41,673	16,877	9.4	69.6
Vietnam	80,472	73,232	4,487	1,802	79,521	35,989	17.9	-1.2
<b>Northeast Asia</b>	<b>112,993</b>	<b>99,563</b>	<b>12,413</b>	<b>1,516</b>	<b>113,492</b>	<b>47,372</b>	<b>25.5</b>	<b>0.4</b>
China	52,395	48,827	7,186	486	56,499	24,562	12.7	7.8
Hong Kong (China)	1,318	1,694	18	7	1,719	810	0.4	30.4
Japan	17,967	15,341	2,199	416	17,956	7,099	4.0	-0.1
Korea (ROK)	33,430	26,702	1,516	407	28,625	11,490	6.4	-14.4
Macau (China)		17	1	1	19	12	0.0	
Mongolia	14	26	3	6	35	17	0.0	150.0
Taiwan (China)	7,869	6,956	1,490	193	8,639	3,382	1.9	9.8
<b>Southern Asia</b>	<b>3,428</b>	<b>3,448</b>	<b>379</b>	<b>275</b>	<b>4,102</b>	<b>1,221</b>	<b>0.9</b>	<b>19.7</b>
Afghanistan	7	7		1	8	1	0.0	14.3
Bangladesh	236	110	22	36	168	24	0.0	-28.8
Bhutan	9	15	2	3	20	7	0.0	122.2
India	2,661	2,926	249	179	3,354	1,041	0.8	26.0
Nepal	198	178	37	11	226	84	0.1	14.1
Pakistan	157	110	24	13	147	28	0.0	-6.4
Sri Lanka	160	102	45	32	179	36	0.0	11.9
<b>Oceania</b>	<b>13,413</b>	<b>12,082</b>	<b>582</b>	<b>1,728</b>	<b>14,392</b>	<b>6,696</b>	<b>3.2</b>	<b>7.3</b>
Australia	11,623	10,569	487	1,403	12,459	5,818	2.8	7.2
Fiji	20	11	2	2	15	5	0.0	-25.0
New Zealand	1,770	1,502	93	323	1,918	873	0.4	8.4
Other Asia & the Pacific	342	431	17	182	630	247	0.1	84.2
<b>Europe</b>	<b>73,176</b>	<b>74,785</b>	<b>2,627</b>	<b>3,660</b>	<b>81,072</b>	<b>36,958</b>	<b>18.2</b>	<b>10.8</b>
<b>Northern Europe</b>	<b>17,577</b>	<b>20,356</b>	<b>839</b>	<b>298</b>	<b>21,493</b>	<b>9,552</b>	<b>4.8</b>	<b>22.3</b>
Denmark	836	822	34	33	889	382	0.2	6.3
Finland	693	759	32	22	813	374	0.2	17.3
Iceland	81	46	1	4	51	18	0.0	-37.0
Ireland	820	854	40	6	900	449	0.2	9.8
Norway	1,027	937	17	32	986	424	0.2	-4.0
Sweden	1,608	1,739	63	41	1,843	787	0.4	14.6
United Kingdom	12,512	15,199	652	160	16,011	7,118	3.6	28.0
<b>Western Europe</b>	<b>33,126</b>	<b>33,181</b>	<b>1,227</b>	<b>2,634</b>	<b>37,042</b>	<b>16,615</b>	<b>8.3</b>	<b>11.8</b>
Austria	960	1,036	28	25	1,089	487	0.2	13.4
Belgium	2,126	2,107	62	94	2,263	964	0.5	6.4
France	14,836	13,051	731	2,192	15,974	7,274	3.6	7.7
Germany	10,544	11,652	234	152	12,038	5,341	2.7	14.2
Luxembourg	38	60	1	2	63	30	0.0	65.8
Monaco	4	4	1	1	6	2	0.0	50.0
Netherlands	2,232	2,802	105	61	2,968	1,289	0.7	33.0
Switzerland	2,386	2,469	65	107	2,641	1,228	0.6	10.7
<b>Central / Eastern Europe</b>	<b>14,999</b>	<b>11,980</b>	<b>291</b>	<b>508</b>	<b>12,779</b>	<b>6,378</b>	<b>2.9</b>	<b>-14.8</b>
Bulgaria	122	235	3	10	248	132	0.1	103.3
Czech Republic	701	695	7	4	706	332	0.2	0.7
Estonia	202	285	7	2	294	140	0.1	45.5
Hungary	465	507	10	27	544	248	0.1	17.0
Kazakhstan	203	98	36	3	137	59	0.0	-32.5
Kyrgyzstan		5	1	3	9	3	0.0	
Latvia		188	3	3	194	94	0.0	
Lithuania	241	264	2	2	268	129	0.1	11.2
Poland	2,208	2,390	20	25	2,435	1,182	0.5	10.3
Romania	240	252	11	31	294	139	0.1	22.5
Russian Federation	9,649	6,368	156	365	6,889	3,542	1.5	-28.6
Slovakia	309	275	2	5	282	139	0.1	-8.7
Ukraine	586	374	29	23	426	210	0.1	-27.3
Uzbekistan	73	44	4	5	53	29	0.0	-27.4

Source: Statistics and Tourism Information Department, MOT

## International Tourist Arrivals to Cambodia by Country of Residence in November 2015

(by all mean of transportations)

Regions Country of Residence	2014	2015			Total	Female	Share	Change
		Purpose of Visit					(%)	(%)
		Holiday	Business	Others			2015*	2015*/14
<b>Grand Total</b>	<b>411,501</b>	<b>400,547</b>	<b>26,585</b>	<b>17,508</b>	<b>444,640</b>	<b>185,665</b>	<b>100.0</b>	<b>8.1</b>
<b>Southern Europe</b>	<b>7,166</b>	<b>8,944</b>	<b>259</b>	<b>84</b>	<b>9,287</b>	<b>4,198</b>	<b>2.1</b>	<b>29.6</b>
Croatia	111	152	6	10	168	67	0.0	51.4
Greece	108	165	9	3	177	70	0.0	63.9
Italy	2,764	3,642	127	29	3,798	1,729	0.9	37.4
Malta		25	1	4	30	10	0.0	
Portugal	612	809	13	5	827	368	0.2	35.1
Serbia	56	57	1	6	64	20	0.0	14.3
Slovenia	77	137	6	2	145	63	0.0	88.3
Spain	2,989	3,296	54	9	3,359	1,580	0.8	12.4
Turkey	449	661	42	16	719	291	0.2	60.1
Other Europe	308	324	11	136	471	215	0.1	52.9
<b>Americas</b>	<b>26,735</b>	<b>25,257</b>	<b>1,157</b>	<b>5,640</b>	<b>32,054</b>	<b>14,892</b>	<b>7.2</b>	<b>19.9</b>
<b>North America</b>	<b>23,942</b>	<b>22,211</b>	<b>1,094</b>	<b>5,507</b>	<b>28,812</b>	<b>13,410</b>	<b>6.5</b>	<b>20.3</b>
Canada	5,395	5,031	239	900	6,170	2,919	1.4	14.4
Mexico	475	642	3	7	652	304	0.1	37.3
United States	18,072	16,538	852	4,600	21,990	10,187	4.9	21.7
<b>Central America</b>	<b>44</b>	<b>30</b>	<b>3</b>	<b>8</b>	<b>41</b>	<b>15</b>	<b>0.0</b>	
Costa Rica	44	24	1	3	28	10	0.0	-36.4
Honduras		1	1	1	3	2	0.0	
Jamaica		5	1	4	10	3	0.0	
<b>South America</b>	<b>2,476</b>	<b>2,748</b>	<b>53</b>	<b>31</b>	<b>2,832</b>	<b>1,325</b>	<b>0.6</b>	<b>14.4</b>
Argentina	469	787	3	5	795	360	0.2	69.5
Brazil	1,189	1,122	23	7	1,152	553	0.3	-3.1
Chile	415	341	10	3	354	163	0.1	-14.7
Colombia	229	246	8	8	262	133	0.1	14.4
Ecuador	23	44	2	2	48	24	0.0	108.7
Peru	101	125	5	3	133	60	0.0	31.7
Uruguay	50	50	1	1	52	19	0.0	4.0
Venezuela		33	1	2	36	13	0.0	
Other Americas	273	268	7	94	369	142	0.1	35.2
<b>Africa</b>	<b>537</b>	<b>532</b>	<b>93</b>	<b>48</b>	<b>673</b>	<b>251</b>	<b>0.2</b>	<b>25.3</b>
<b>North Africa</b>	<b>6</b>	<b>56</b>	<b>5</b>	<b>5</b>	<b>66</b>	<b>15</b>	<b>0.0</b>	<b>1000.0</b>
Morocco		35	4	2	41	9	0.0	
Sudan	6	6	1	2	9	2	0.0	50.0
Tunisia		15		1	16	4	0.0	
<b>Subsaharan Africa</b>	<b>480</b>	<b>412</b>	<b>86</b>	<b>33</b>	<b>531</b>	<b>213</b>	<b>0.1</b>	<b>10.6</b>
Cameroon	8	5	1	3	9	2	0.0	12.5
Congo	6	5	3	1	9	2	0.0	50.0
Ghana	10	4	1	1	6	1	0.0	-40.0
Kenya	13	28	2	4	34	16	0.0	161.5
Liberia	9	2	1	1	4	1	0.0	
Nigeria	84	41	53	2	96	16	0.0	14.3
South Africa	333	313	23	17	353	167	0.1	6.0
Tanzania		4		1	5	1	0.0	
Uganda	17	3		2	5	1	0.0	-70.6
Zimbabwe		7	2	1	10	6	0.0	
Other Africa	51	64	2	10	76	23	0.0	49.0
<b>Middle East</b>	<b>1,158</b>	<b>1,249</b>	<b>44</b>	<b>36</b>	<b>1,329</b>	<b>478</b>	<b>0.3</b>	<b>14.8</b>
Egypt	26	27	8	1	36	6	0.0	38.5
Iran	94	33	1	2	36	8	0.0	-61.7
Iraq	10	16	1	3	20	4	0.0	100.0
Israel	907	917	22	8	947	386	0.2	4.4
Jordan		14	3	1	18	2	0.0	
Kuwait	36	34	1	2	37	1	0.0	2.8
Oman	10	15	1	1	17	3	0.0	70.0
Palestine	5	10	1	2	13	1	0.0	160.0
Qatar	7	2	1	2	5	2	0.0	
Saudi Arabia	15	18	1	2	21	4	0.0	40.0
Syria		10	1	1	12	2	0.0	
United Arab Emirates	1	13	1	2	16	1	0.0	1500.0
Yemen	13	78	1	2	81	26	0.0	523.1
Other Middle East	34	62	1	7	70	32	0.0	105.9