



KINGDOM OF CAMBODIA
NATION RELIGION KING



TOURISM STATISTICS REPORT

September 2016

MINISTRY OF TOURISM

Statistics and Tourism Information Department

No. A3, Street 169, Sangkat Veal Vong, Khan 7 Makara, Phnom Penh, Cambodia.

Fax: +855 23 885003

E-mail: kong@mot.gov.kh

Web site: www.mot.gov.kh

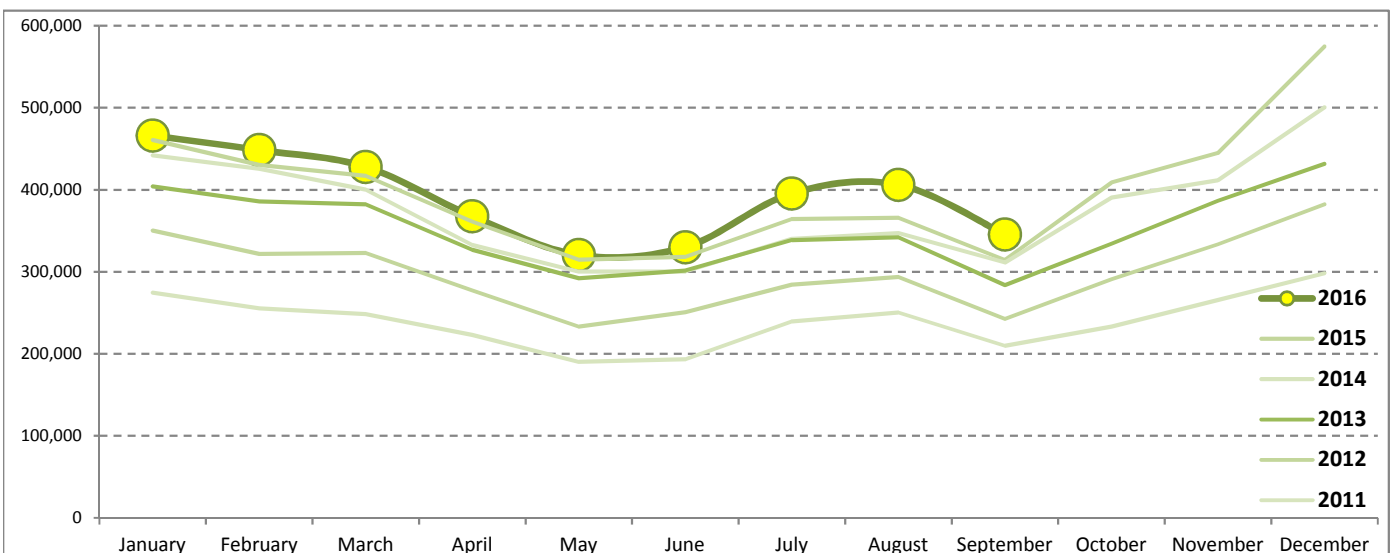
Tourism Highlights

International Tourist Arrivals, Average Length of Stays, Hotel Occupancy & Tourism Receipts 1993 - 2015

Years	Int'l Tourist Arrivals		Average Length	Hotel Occupancy	Tourism Receipts
	Number	Change (%)	of Stays (Days)	(%)	(Million US\$)
1993	118,183	-	N/A	N/A	N/A
1994	176,617	49.4	N/A	N/A	N/A
1995	219,680	24.4	8.00	37.0	100
1996	260,489	18.6	7.50	40.0	118
1997	218,843	-16.0	6.40	30.0	103
1998	286,524	30.9	5.20	40.0	166
1999	367,743	28.3	5.50	44.0	190
2000	466,365	26.8	5.50	45.0	228
2001	604,919	29.7	5.50	48.0	304
2002	786,524	30.0	5.80	50.0	379
2003	701,014	-10.9	5.50	50.0	347
2004	1,055,202	50.5	6.30	52.0	578
2005	1,421,615	34.7	6.30	52.0	832
2006	1,700,041	19.6	6.50	54.8	1,049
2007	2,015,128	18.5	6.50	54.8	1,400
2008	2,125,465	5.5	6.65	62.7	1,595
2009	2,161,577	1.7	6.45	63.6	1,561
2010	2,508,289	16.0	6.45	65.7	1,786
2011	2,881,862	14.9	6.50	66.2	1,912
2012	3,584,307	24.4	6.30	68.5	2,210
2013	4,210,165	17.5	6.75	69.5	2,547
2014	4,502,775	7.0	6.50	67.6	2,736
2015	4,775,231	6.1	6.80	70.2	3,012

International Tourist Arrivals to Cambodia

Months	2011	2012	2013	2014	2015	2016	Change (%)				
							12/11	13/12	14/13	15/14	16*/15
Q1	778,467	995,210	1,172,072	1,267,922	1,307,836	1,342,477	27.8	17.8	8.2	3.1	2.6
January	274,471	350,257	404,106	442,045	460,577	466,086	27.6	15.4	9.4	4.2	1.2
February	255,499	321,870	385,760	425,801	430,207	448,468	26.0	19.8	10.4	1.0	4.2
March	248,497	323,083	382,206	400,076	417,052	427,923	30.0	18.3	4.7	4.2	2.6
Q2	606,562	761,442	920,527	933,446	994,154	1,018,455	25.5	20.9	1.4	6.5	2.4
April	223,032	277,304	327,000	332,690	361,139	367,684	24.3	17.9	1.7	8.6	1.8
May	190,258	233,220	292,115	300,302	314,748	320,601	22.6	25.3	2.8	4.8	1.9
June	193,272	250,918	301,412	300,454	318,267	330,170	29.8	20.1	-0.3	5.9	3.7
Q3	699,760	820,888	964,612	998,690	1,044,880	1,147,483	17.3	17.5	3.5	4.6	9.8
July	239,527	284,282	338,761	340,091	364,325	395,761	18.7	19.2	0.4	7.1	8.6
August	250,429	293,859	342,064	347,211	366,096	406,214	17.3	16.4	1.5	5.4	11.0
September	209,804	242,747	283,787	311,388	314,459	345,508	15.7	16.9	9.7	1.0	9.9
Q4	797,073	1,006,767	1,152,954	1,302,717	1,428,361	0	26.3	14.5	13.0	9.6	
October	233,190	290,959	334,410	390,637	408,922		24.8	14.9	16.8	4.7	
November	265,539	333,482	386,737	411,501	444,640		25.6	16.0	6.4	8.1	
December	298,344	382,326	431,807	500,579	574,799		28.1	12.9	15.9	14.8	
Total	2,881,862	3,584,307	4,210,165	4,502,775	4,775,231	3,508,415	24.4	17.5	7.0	6.1	4.8



Source: Statistics and Tourism Information Department, MOT

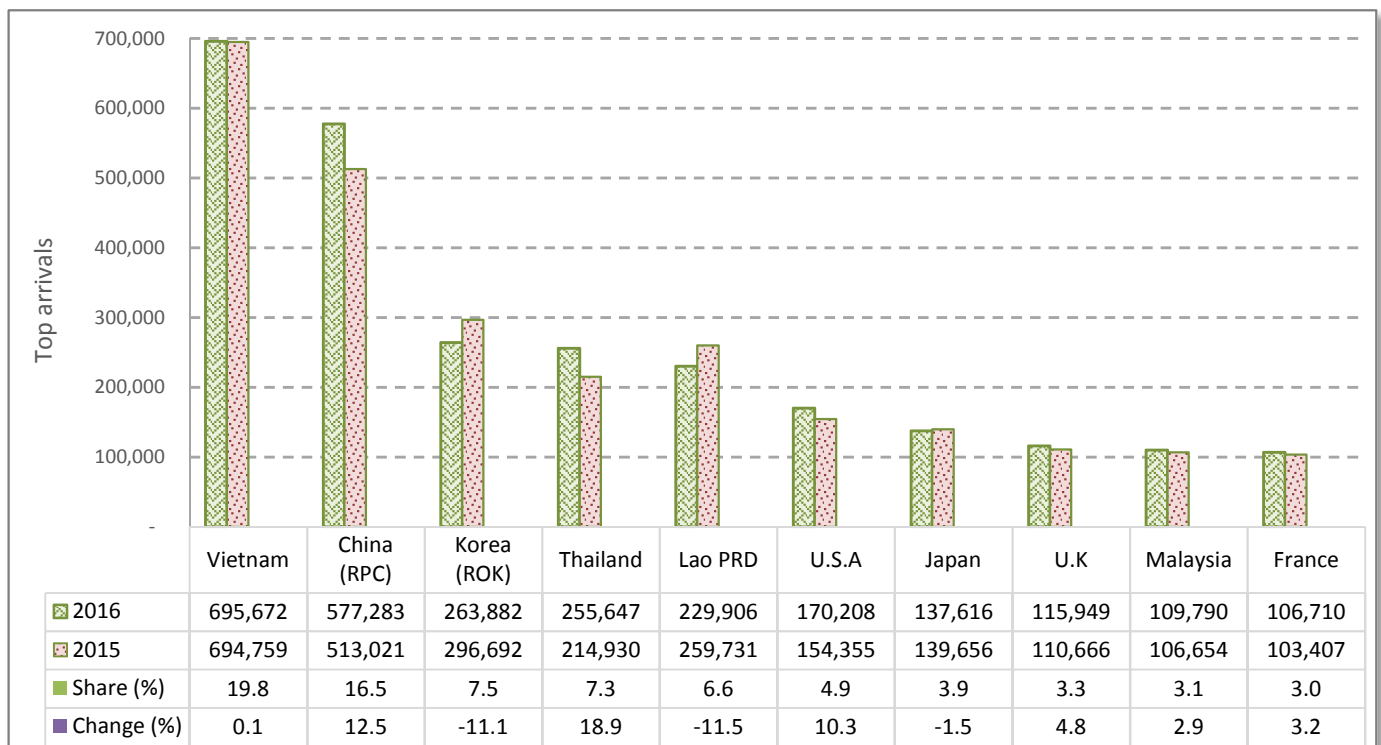
CAMBODIA: TOURISM STATISTICS REPORT IN THE FIRST NINE MONTHS 2016

I. INBOUND TOURISM

1. International tourist arrivals in January - September 2016

	Inbound tourism		Share (%)		Change (%)
	2015	2016	2015	2016	2016*/15
Air	1,794,664	1,906,976	53.6	54.4	6.3
Phnom Penh Int'l Airport (PNH)	777,106	834,186	23.2	23.8	7.3
Siem Reap Int'l Airport (REP)	1,017,558	1,057,465	30.4	30.1	3.9
Kong Keng (KOS)		15,325		0.4	
Land and Waterways	1,552,206	1,601,439	46.4	45.6	3.2
Land	1,451,092	1,486,031	43.4	42.4	2.4
Waterways	101,114	115,408	3.0	3.3	14.1
Total	3,346,870	3,508,415	100.0	100.0	4.8

2. Top ten markets arrivals in January - September 2016



II. OUTBOUND TOURISM

Outbound tourism in January - September 2016

	Outbound tourism		Change (%)
	2015	2016	2016*/15
Cambodian Outbound Tourists	864,237	1,059,521	22.6
International Tourists Departure	3,190,882	3,295,314	3.3

III. INTERNAL TOURISM

Foreign visitor arrivals to the regions in January - September 2016

	Arrivals		Share (%)		Change (%)
	2015	2016	2015	2016	2016*/15
Phnom Penh & Surrounding	1,799,944	1,940,183	46.6	47.7	7.8
Siem Reap Angkor	1,546,926	1,568,592	40.0	38.6	1.4
Coastal Areas	470,399	507,044	12.2	12.5	7.8
Eco-tourism Areas	46,461	47,837	1.2	1.2	3.0
Total	3,863,730	4,063,656	100.0	100.0	5.2

International Tourist Arrivals to Cambodia by Country of Residence in January - September 2016

(by all means of transportation)

Regions Country of Residence	2015	2016			Total	Female	Share	Change
		Purposes of Visit					(%)	(%)
		Holiday	Business	Others			2016*	2016*/15
Grand Total	3,346,870	3,070,810	255,384	182,221	3,508,415	1,506,566	100.0	4.8
Asia and the Pacific	2,603,630	2,312,002	221,985	164,349	2,698,336	1,140,071	76.9	3.6
ASEAN (Southeast Asia)	1,418,940	1,232,559	85,968	144,717	1,463,244	612,135	41.7	3.1
Brunei Darussalam	602	520	9	51	580	220	0.0	-3.7
Indonesia	30,059	20,638	10,520	3,940	35,098	9,215	1.0	16.8
Lao PDR	259,731	220,017	171	9,718	229,906	128,056	6.6	-11.5
Malaysia	106,654	99,782	7,942	2,066	109,790	36,365	3.1	2.9
Myanmar	6,541	7,830	442	909	9,181	3,779	0.3	40.4
Philippines	60,853	60,752	8,745	9,570	79,067	40,410	2.3	29.9
Singapore	44,811	44,542	2,520	1,241	48,303	15,500	1.4	7.8
Thailand	214,930	216,674	15,549	23,424	255,647	94,044	7.3	18.9
Vietnam	694,759	561,804	40,070	93,798	695,672	284,546	19.8	0.1
Northeast Asia	1,041,116	930,900	126,251	12,295	1,069,446	459,111	30.5	2.7
China	513,021	488,688	81,352	7,243	577,283	256,549	16.5	12.5
Hong Kong (China)	9,138	11,531	197	63	11,791	5,525	0.3	29.0
Japan	139,656	117,827	17,790	1,999	137,616	52,375	3.9	-1.5
Korea (ROK)	296,692	247,703	13,405	2,774	263,882	113,221	7.5	-11.1
Macau (China)	317	230	17	37	284	84	0.0	-10.4
Mongolia	331	288	33	31	352	204	0.0	6.3
Taiwan (China)	81,961	64,633	13,457	148	78,238	31,153	2.2	-4.5
Southern Asia	30,403	29,676	3,973	3,817	37,466	9,695	1.1	23.2
Afghanistan	84	72	4	24	100	27	0.0	19.0
Bangladesh	1,554	933	281	145	1,359	204	0.0	-12.5
Bhutan	144	94	5	60	159	56	0.0	10.4
India	24,532	25,315	2,645	3,286	31,246	8,350	0.9	27.4
Nepal	1,625	1,352	240	97	1,689	434	0.0	3.9
Pakistan	1,071	717	334	92	1,143	201	0.0	6.7
Sri Lanka	1,393	1,193	464	113	1,770	423	0.1	27.1
Oceania	109,555	115,669	5,632	1,300	122,601	56,898	3.5	11.9
Australia	93,262	99,240	4,731	1,167	105,138	48,863	3.0	12.7
Fiji	137	92	22	25	139	47	0.0	1.5
New Zealand	16,156	16,337	879	108	17,324	7,988	0.5	7.2
Other Asia & the Pacific	3,616	3,198	161	2,220	5,579	2,232	0.2	54.3
Europe	502,574	509,290	22,157	9,987	541,434	245,209	15.4	7.7
Northern Europe	151,212	148,538	7,141	1,879	157,558	68,588	4.5	4.2
Denmark	8,687	8,206	293	116	8,615	3,706	0.2	-0.8
Finland	4,731	3,974	211	77	4,262	1,713	0.1	-9.9
Iceland	503	511	11	20	542	221	0.0	7.8
Ireland	8,544	8,564	333	76	8,973	4,248	0.3	5.0
Norway	6,808	6,807	195	61	7,063	3,227	0.2	3.7
Sweden	11,273	11,520	493	141	12,154	5,088	0.3	7.8
United Kingdom	110,666	108,956	5,605	1,388	115,949	50,385	3.3	4.8
Western Europe	219,677	229,769	10,860	4,051	244,680	109,567	7.0	11.4
Austria	7,215	7,873	162	63	8,098	3,587	0.2	12.2
Belgium	12,022	11,644	566	278	12,488	5,297	0.4	3.9
France	103,407	98,303	6,447	1,960	106,710	48,107	3.0	3.2
Germany	60,852	72,171	1,850	1,185	75,206	33,803	2.1	23.6
Luxembourg	478	545	11	15	571	241	0.0	19.5
Monaco	58	36	2	13	51	12	0.0	-12.1
Netherlands	20,740	20,984	1,013	284	22,281	10,049	0.6	7.4
Switzerland	14,905	18,213	809	253	19,275	8,471	0.5	29.3
Central / Eastern Europe	68,216	62,189	2,045	1,325	65,559	33,635	1.9	-3.9
Bulgaria	1,170	1,075	24	55	1,154	572	0.0	-1.4
Czech Republic	3,948	3,706	65	53	3,824	1,706	0.1	-3.1
Estonia	1,235	1,169	29	12	1,210	534	0.0	-2.0
Hungary	2,896	3,118	102	47	3,267	1,572	0.1	12.8
Kazakhstan	1,771	1,038	176	18	1,232	631	0.0	-30.4
Kyrgyzstan	128	92	16	17	125	54	0.0	-2.3
Latvia	574	546	32	19	597	288	0.0	4.0
Lithuania	1,166	1,283	50	19	1,352	673	0.0	16.0
Poland	8,954	9,690	177	82	9,949	4,908	0.3	11.1
Romania	1,612	1,519	53	68	1,640	902	0.0	1.7
Russian Federation	38,644	33,619	1,067	356	35,042	18,837	1.0	-9.3
Slovakia	1,640	1,791	52	26	1,869	865	0.1	14.0
Ukraine	3,905	3,282	160	524	3,966	1,944	0.1	1.6
Uzbekistan	573	261	42	29	332	149	0.0	-42.1

Source: Statistics and Tourism Information Department, MOT

International Tourist Arrivals to Cambodia by Country of Residence in January - September 2016

(by all means of transportation)

Regions Country of Residence	2015	2016			Total	Female	Share	Change
		Purposes of Visit					(%)	(%)
		Holiday	Business	Others			2016*	2016*/15
Grand Total	3,346,870	3,070,810	255,384	182,221	3,508,415	1,506,566	100.0	4.8
Southern Europe	60,666	65,885	1,997	1,325	69,207	31,648	2.0	14.1
Croatia	854	708	29	76	813	363	0.0	-4.8
Greece	1,162	1,039	58	98	1,195	474	0.0	2.8
Italy	22,442	24,650	881	379	25,910	11,158	0.7	15.5
Malta	330	356	4	19	379	172	0.0	14.8
Portugal	3,957	4,596	140	119	4,855	2,345	0.1	22.7
Serbia	586	493	28	254	775	356	0.0	32.3
Slovenia	852	770	48	14	832	391	0.0	-2.3
Spain	26,154	29,045	441	138	29,624	14,492	0.8	13.3
Turkey	4,329	4,228	368	228	4,824	1,897	0.1	11.4
Other Europe	2,803	2,909	114	1,407	4,430	1,771	0.1	58.0
Americas	224,120	233,150	9,518	6,704	249,372	114,141	7.1	11.3
North America	199,956	204,002	9,140	5,215	218,357	99,254	6.2	9.2
Canada	40,576	40,241	1,776	476	42,493	19,928	1.2	4.7
Mexico	5,025	5,515	52	89	5,656	2,883	0.2	12.6
United States	154,355	158,246	7,312	4,650	170,208	76,443	4.9	10.3
Central America	492	544	22	59	625	243	0.0	27.0
Costa Rica	327	389	6	13	408	186	0.0	24.8
Honduras	81	106	11	32	149	27	0.0	84.0
Jamaica	84	49	5	14	68	30	0.0	-19.0
South America	21,640	26,692	281	702	27,675	13,497	0.8	27.9
Argentina	5,818	10,695	45	43	10,783	5,275	0.3	85.3
Brazil	7,351	6,738	124	92	6,954	3,333	0.2	-5.4
Chile	3,838	4,722	31	49	4,802	2,504	0.1	25.1
Colombia	2,123	2,088	47	33	2,168	1,078	0.1	2.1
Ecuador	416	407	10	21	438	216	0.0	5.3
Peru	656	788	7	432	1,227	434	0.0	87.0
Uruguay	837	980	8	15	1,003	514	0.0	19.8
Venezuela	601	274	9	17	300	143	0.0	-50.1
Other America	2,032	1,912	75	728	2,715	1,147	0.1	33.6
Africa	6,253	5,382	1,125	858	7,365	2,904	0.2	17.8
North Africa	622	652	46	51	749	311	0.0	20.4
Morocco	380	323	37	17	377	162	0.0	-0.8
Sudan	107	72	1	20	93	20	0.0	-13.1
Tunisia	135	257	8	14	279	129	0.0	106.7
Subsaharan Africa	5,176	4,274	1,043	651	5,968	2,372	0.2	15.3
Cameroon	164	61	11	10	82	26	0.0	-50.0
Congo	76	60	7	24	91	28	0.0	19.7
Ghana	66	69	13	63	145	34	0.0	119.7
Kenya	226	207	17	35	259	132	0.0	14.6
Liberia	46	23	0	12	35	6	0.0	-23.9
Nigeria	802	432	635	31	1,098	92	0.0	36.9
South Africa	3,555	3,165	327	225	3,717	1,874	0.1	4.6
Tanzania	67	91	5	210	306	55	0.0	356.7
Uganda	91	75	4	10	89	42	0.0	-2.2
Zimbabwe	83	91	24	31	146	83	0.0	75.9
Other Africa	455	456	36	156	648	221	0.0	42.4
Middle East	10,293	10,986	599	323	11,908	4,241	0.3	15.7
Egypt	448	443	43	19	505	139	0.0	12.7
Iran	369	303	28	27	358	120	0.0	-3.0
Iraq	105	96	11	14	121	20	0.0	15.2
Israel	6,673	7,157	192	37	7,386	3,224	0.2	10.7
Jordan	267	705	192	15	912	189	0.0	241.6
Kuwait	792	588	6	26	620	43	0.0	-21.7
Oman	170	139	0	11	150	32	0.0	-11.8
Palestine	55	45	4	10	59	17	0.0	7.3
Qatar	94	47	4	13	64	16	0.0	-31.9
Saudi Arabia	253	220	15	19	254	20	0.0	0.4
Syria	199	432	62	14	508	122	0.0	155.3
United Arab Emirates	316	251	3	13	267	105	0.0	-15.5
Yemen	208	208	9	15	232	40	0.0	11.5
Other Middle East	344	352	30	90	472	154	0.0	37.2

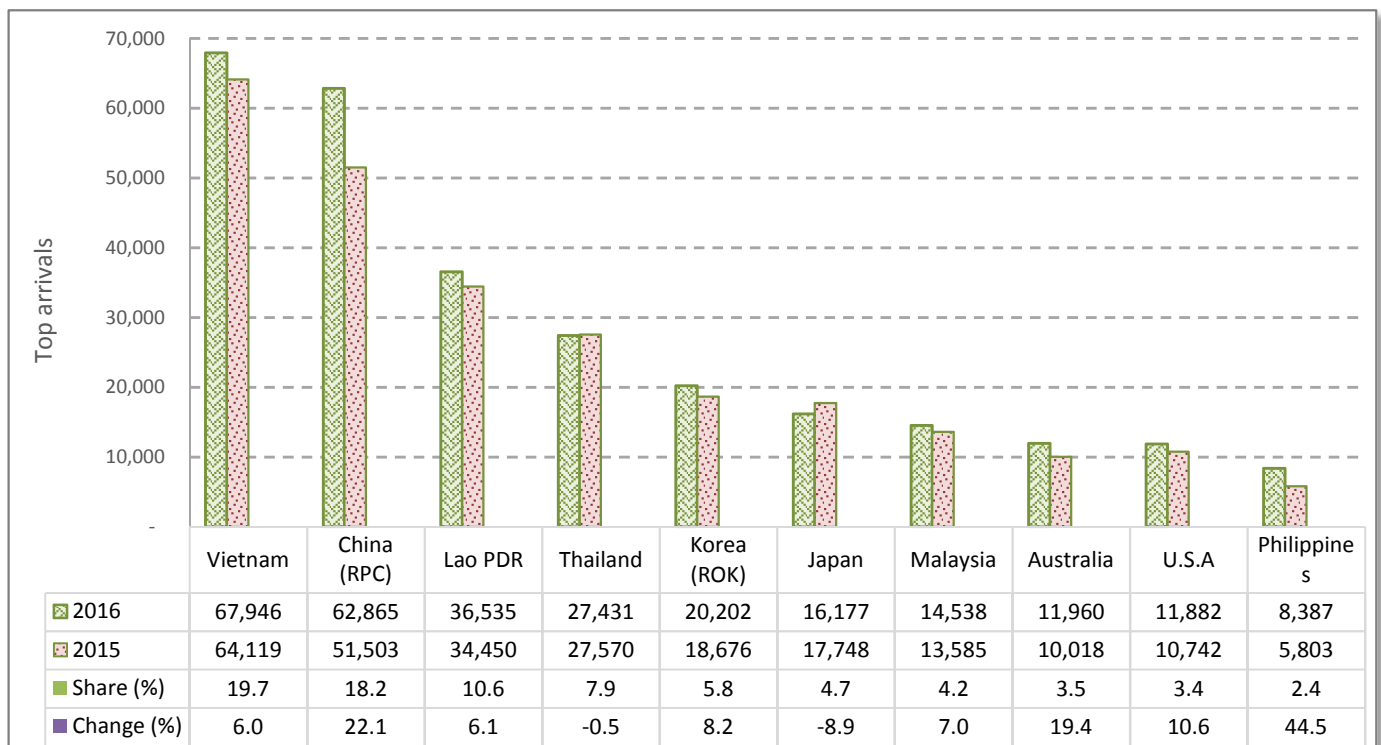
CAMBODIA: TOURISM STATISTICS REPORT IN SEPTEMBER 2016

I. INBOUND TOURISM

1. International tourist arrivals in September 2016

	Inbound tourism		Share (%)		Change (%)
	2015	2016	2015	2016	2016*/15
Air	165,852	182,939	52.7	52.9	10.3
Phnom Penh Int'l Airport (PNH)	78,669	86,681	25.0	25.1	10.2
Siem Reap Int'l Airport (REP)	87,183	92,257	27.7	26.7	5.8
Kong Keng (KOS)		4,001		1.2	
Land and Waterways	148,607	162,569	47.3	47.1	9.4
Land	141,895	155,104	45.1	44.9	9.3
Waterways	6,712	7,465	2.1	2.2	11.2
Total	314,459	345,508	100.0	100.0	9.9

2. Top ten markets arrivals in September 2016



II. OUTBOUND TOURISM

Outbound tourism in September 2016

	Outbound tourism		Change (%)
	2015	2016	2016*/15
Cambodian Outbound Tourists	106,196	121,933	14.8
International Tourists Departure	261,036	325,786	24.8

III. INTERNAL TOURISM

Foreign visitor arrivals to the regions in September 2016

	Arrivals		Share (%)		Change (%)
	2015	2016	2015	2016	2016*/15
Phnom Penh & Surrounding	193,953	214,324	55.0	54.9	10.5
Siem Reap Angkor	120,506	131,184	34.2	33.6	8.9
Coastal Areas	34,719	41,257	9.8	10.6	18.8
Eco-tourism Areas	3,356	3,805	1.0	1.0	13.4
Total	352,534	390,570	100.0	100.0	10.8

International Tourist Arrivals to Cambodia by Country of Residence in September 2016

(by all means of transportation)

Regions Country of Residence	2015	2016			Total	Female	Share	Change
		Purposes of Visit					(%)	(%)
		Holiday	Business	Others			2016*	2016*/15
Grand Total	314,459	303,346	26,386	15,776	345,508	150,784	100.0	9.9
Asia and the Pacific	267,094	254,860	23,015	13,741	291,616	127,709	84.4	9.2
ASEAN (Southeast Asia)	154,465	144,180	8,670	11,683	164,533	73,501	47.6	6.5
Brunei Darussalam	63	45	1	9	55	14	0.0	-12.7
Indonesia	3,074	1,993	1,159	357	3,509	894	1.0	14.2
Lao PDR	34,450	36,387	29	119	36,535	22,546	10.6	6.1
Malaysia	13,585	13,686	830	22	14,538	5,122	4.2	7.0
Myanmar	639	664	42	57	763	293	0.2	19.4
Philippines	5,803	6,772	749	866	8,387	4,449	2.4	44.5
Singapore	5,162	5,106	245	18	5,369	1,932	1.6	4.0
Thailand	27,570	24,454	1,581	1,396	27,431	9,446	7.9	-0.5
Vietnam	64,119	55,073	4,034	8,839	67,946	28,805	19.7	6.0
Northeast Asia	97,103	93,659	13,318	975	107,952	46,006	31.2	11.2
China	51,503	53,694	8,572	599	62,865	28,018	18.2	22.1
Hong Kong (China)	1,595	743	14	9	766	366	0.2	-52.0
Japan	17,748	13,905	2,094	178	16,177	5,832	4.7	-8.9
Korea (ROK)	18,676	18,793	1,233	176	20,202	8,687	5.8	8.2
Macau (China)	41	12	3	5	20	4	0.0	-51.2
Mongolia	22	37	4	2	43	23	0.0	95.5
Taiwan (China)	7,518	6,475	1,398	6	7,879	3,076	2.3	4.8
Southern Asia	3,404	3,378	468	282	4,128	1,085	1.2	21.3
Afghanistan	8	6	0	7	13	4	0.0	62.5
Bangladesh	216	87	31	16	134	19	0.0	-38.0
Bhutan	6	4	0	5	9	1	0.0	50.0
India	2,794	2,897	322	224	3,443	919	1.0	23.2
Nepal	129	113	20	4	137	35	0.0	6.2
Pakistan	108	93	38	17	148	20	0.0	37.0
Sri Lanka	143	178	57	9	244	87	0.1	70.6
Oceania	11,556	13,214	547	127	13,888	6,610	4.0	20.2
Australia	10,018	11,390	460	110	11,960	5,720	3.5	19.4
Fiji	21	11	3	2	16	5	0.0	-23.8
New Zealand	1,517	1,813	84	15	1,912	885	0.6	26.0
Other Asia & the Pacific	566	429	12	674	1,115	507	0.3	97.0
Europe	30,717	31,494	2,240	1,257	34,991	15,084	10.1	13.9
Northern Europe	9,007	9,200	711	191	10,102	4,177	2.9	12.2
Denmark	366	292	33	24	349	127	0.1	-4.6
Finland	210	173	29	9	211	84	0.1	0.5
Iceland	20	22	1	2	25	10	0.0	25.0
Ireland	619	706	48	6	760	349	0.2	22.8
Norway	332	304	17	9	330	122	0.1	-0.6
Sweden	499	433	41	11	485	189	0.1	-2.8
United Kingdom	6,961	7,270	542	130	7,942	3,296	2.3	14.1
Western Europe	12,650	12,137	1,095	289	13,521	5,653	3.9	6.9
Austria	439	383	13	9	405	156	0.1	-7.7
Belgium	748	756	61	24	841	342	0.2	12.4
France	5,203	4,932	656	128	5,716	2,314	1.7	9.9
Germany	4,229	4,200	212	65	4,477	1,946	1.3	5.9
Luxembourg	21	18	1	3	22	6	0.0	4.8
Monaco	4	3	0	2	5	1	0.0	25.0
Netherlands	1,271	1,181	96	36	1,313	556	0.4	3.3
Switzerland	735	664	56	22	742	332	0.2	1.0
Central / Eastern Europe	3,176	3,638	234	205	4,077	2,013	1.2	28.4
Bulgaria	63	49	2	13	64	22	0.0	1.6
Czech Republic	172	151	6	8	165	79	0.0	-4.1
Estonia	30	34	8	1	43	17	0.0	43.3
Hungary	114	82	10	11	103	37	0.0	-9.6
Kazakhstan	61	63	9	3	75	40	0.0	23.0
Kyrgyzstan	8	6	1	1	8	5	0.0	0.0
Latvia	39	26	5	2	33	16	0.0	-15.4
Lithuania	48	51	9	5	65	23	0.0	35.4
Poland	464	609	17	10	636	314	0.2	37.1
Romania	67	99	6	15	120	55	0.0	79.1
Russian Federation	1,781	2,204	129	62	2,395	1,258	0.7	34.5
Slovakia	57	74	4	5	83	42	0.0	45.6
Ukraine	240	174	27	66	267	99	0.1	11.3
Uzbekistan	32	16	1	3	20	6	0.0	-37.5

Source: Statistics and Tourism Information Department, MOT

International Tourist Arrivals to Cambodia by Country of Residence in September 2016

(by all means of transportation)

Regions Country of Residence	2015	2016			Total	Female	Share	Change
		Purposes of Visit					(%)	(%)
		Holiday	Business	Others			2016*	2016*/15
Grand Total	314,459	303,346	26,386	15,776	345,508	150,784	100.0	9.9
Southern Europe	5,490	6,048	190	143	6,381	2,879	1.8	16.2
Croatia	58	25	1	11	37	12	0.0	-36.2
Greece	52	62	6	2	70	26	0.0	34.6
Italy	1,174	1,165	88	33	1,286	493	0.4	9.5
Malta	29	43	0	5	48	27	0.0	65.5
Portugal	330	436	15	25	476	235	0.1	44.2
Serbia	24	25	4	18	47	18	0.0	95.8
Slovenia	98	54	4	1	59	28	0.0	-39.8
Spain	3,233	3,486	37	4	3,527	1,689	1.0	9.1
Turkey	492	752	35	44	831	351	0.2	68.9
Other Europe	394	471	10	429	910	362	0.3	131.0
Americas	14,898	15,438	984	629	17,051	7,348	4.9	14.5
North America	13,356	13,582	947	491	15,020	6,349	4.3	12.5
Canada	2,087	2,145	181	53	2,379	1,083	0.7	14.0
Mexico	527	736	8	15	759	401	0.2	44.0
United States	10,742	10,701	758	423	11,882	4,865	3.4	10.6
Central America	42	52	2	5	59	24	0.0	40.5
Costa Rica	26	39	1	1	41	19	0.0	57.7
Honduras	7	8	1	2	11	5	0.0	57.1
Jamaica	9	5	0	2	7	0	0.0	-22.2
South America	1,215	1,537	27	37	1,601	793	0.5	31.8
Argentina	270	337	4	5	346	159	0.1	28.1
Brazil	356	480	11	6	497	254	0.1	39.6
Chile	264	297	3	3	303	157	0.1	14.8
Colombia	173	226	7	2	235	117	0.1	35.8
Ecuador	26	31	2	6	39	15	0.0	50.0
Peru	53	103	0	10	113	62	0.0	113.2
Uruguay	32	22	0	2	24	9	0.0	-25.0
Venezuela	41	41	0	3	44	20	0.0	7.3
Other America	285	267	8	96	371	182	0.1	30.2
Africa	597	457	104	104	665	214	0.2	11.4
North Africa	60	29	4	6	39	4	0.0	-35.0
Morocco	38	14	2	3	19	2	0.0	-50.0
Sudan	8	10	1	2	13	1	0.0	62.5
Tunisia	14	5	1	1	7	1	0.0	-50.0
Subsaharan Africa	478	368	93	82	543	183	0.2	13.6
Cameroon	6	5	1	1	7	3	0.0	16.7
Congo	13	7	3	1	11	1	0.0	-15.4
Ghana	7	6	1	6	13	3	0.0	85.7
Kenya	19	16	1	2	19	12	0.0	0.0
Liberia	3	1	0	2	3	0	0.0	0.0
Nigeria	89	60	65	7	132	10	0.0	48.3
South Africa	299	255	21	22	298	143	0.1	-0.3
Tanzania	13	4	1	38	43	4	0.0	230.8
Uganda	21	5	0	2	7	3	0.0	-66.7
Zimbabwe	8	9	0	1	10	4	0.0	25.0
Other Africa	59	60	7	16	83	27	0.0	40.7
Middle East	1,153	1,097	43	45	1,185	429	0.3	2.8
Egypt	76	36	2	3	41	9	0.0	-46.1
Iran	36	26	2	7	35	8	0.0	-2.8
Iraq	20	9	3	3	15	5	0.0	-25.0
Israel	722	594	18	1	613	274	0.2	-15.1
Jordan	28	45	7	2	54	10	0.0	92.9
Kuwait	53	56	1	4	61	0	0.0	15.1
Oman	10	16	0	1	17	4	0.0	70.0
Palestine	7	7	1	1	9	1	0.0	28.6
Qatar	7	6	1	2	9	0	0.0	28.6
Saudi Arabia	12	16	2	3	21	0	0.0	75.0
Syria	58	42	0	3	45	13	0.0	-22.4
United Arab Emirates	15	157	1	2	160	78	0.0	966.7
Yemen	62	34	0	2	36	4	0.0	-41.9
Other Middle East	47	53	5	11	69	23	0.0	46.8