



KINGDOM OF CAMBODIA  
NATION RELIGION KING



# TOURISM STATISTICS REPORT

# November 2016

**MINISTRY OF TOURISM**

Statistics and Tourism Information Department

No. A3, Street 169, Sangkat Veal Vong, Khan 7 Makara, Phnom Penh, Cambodia.

Fax: +855 23 885003

E-mail: [kong@mot.gov.kh](mailto:kong@mot.gov.kh)

Web site: [www.mot.gov.kh](http://www.mot.gov.kh)

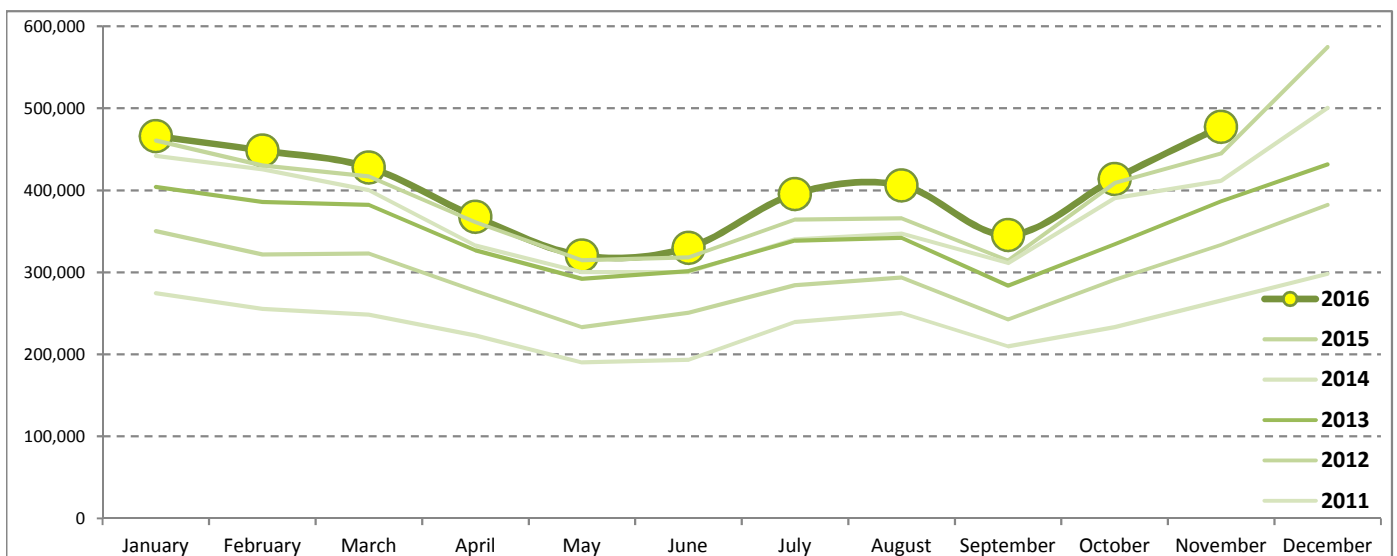
## Tourism Highlights

### International Tourist Arrivals, Average Length of Stays, Hotel Occupancy & Tourism Receipts 1993 - 2015

Years	Int'l Tourist Arrivals		Average Length	Hotel Occupancy	Tourism Receipts
	Number	Change (%)	of Stays (Days)	(%)	(Million US\$)
1993	118,183	-	N/A	N/A	N/A
1994	176,617	49.4	N/A	N/A	N/A
1995	219,680	24.4	8.00	37.0	100
1996	260,489	18.6	7.50	40.0	118
1997	218,843	-16.0	6.40	30.0	103
1998	286,524	30.9	5.20	40.0	166
1999	367,743	28.3	5.50	44.0	190
2000	466,365	26.8	5.50	45.0	228
2001	604,919	29.7	5.50	48.0	304
2002	786,524	30.0	5.80	50.0	379
2003	701,014	-10.9	5.50	50.0	347
2004	1,055,202	50.5	6.30	52.0	578
2005	1,421,615	34.7	6.30	52.0	832
2006	1,700,041	19.6	6.50	54.8	1,049
2007	2,015,128	18.5	6.50	54.8	1,400
2008	2,125,465	5.5	6.65	62.7	1,595
2009	2,161,577	1.7	6.45	63.6	1,561
2010	2,508,289	16.0	6.45	65.7	1,786
2011	2,881,862	14.9	6.50	66.2	1,912
2012	3,584,307	24.4	6.30	68.5	2,210
2013	4,210,165	17.5	6.75	69.5	2,547
2014	4,502,775	7.0	6.50	67.6	2,736
2015	4,775,231	6.1	6.80	70.2	3,012

### International Tourist Arrivals to Cambodia

Months	2011	2012	2013	2014	2015	2016	Change (%)				
							12/11	13/12	14/13	15/14	16*/15
<b>Q1</b>	<b>778,467</b>	<b>995,210</b>	<b>1,172,072</b>	<b>1,267,922</b>	<b>1,307,836</b>	<b>1,342,477</b>	<b>27.8</b>	<b>17.8</b>	<b>8.2</b>	<b>3.1</b>	<b>2.6</b>
January	274,471	350,257	404,106	442,045	460,577	466,086	27.6	15.4	9.4	4.2	1.2
February	255,499	321,870	385,760	425,801	430,207	448,468	26.0	19.8	10.4	1.0	4.2
March	248,497	323,083	382,206	400,076	417,052	427,923	30.0	18.3	4.7	4.2	2.6
<b>Q2</b>	<b>606,562</b>	<b>761,442</b>	<b>920,527</b>	<b>933,446</b>	<b>994,154</b>	<b>1,018,455</b>	<b>25.5</b>	<b>20.9</b>	<b>1.4</b>	<b>6.5</b>	<b>2.4</b>
April	223,032	277,304	327,000	332,690	361,139	367,684	24.3	17.9	1.7	8.6	1.8
May	190,258	233,220	292,115	300,302	314,748	320,601	22.6	25.3	2.8	4.8	1.9
June	193,272	250,918	301,412	300,454	318,267	330,170	29.8	20.1	-0.3	5.9	3.7
<b>Q3</b>	<b>699,760</b>	<b>820,888</b>	<b>964,612</b>	<b>998,690</b>	<b>1,044,880</b>	<b>1,147,483</b>	<b>17.3</b>	<b>17.5</b>	<b>3.5</b>	<b>4.6</b>	<b>9.8</b>
July	239,527	284,282	338,761	340,091	364,325	395,761	18.7	19.2	0.4	7.1	8.6
August	250,429	293,859	342,064	347,211	366,096	406,214	17.3	16.4	1.5	5.4	11.0
September	209,804	242,747	283,787	311,388	314,459	345,508	15.7	16.9	9.7	1.0	9.9
<b>Q4</b>	<b>797,073</b>	<b>1,006,767</b>	<b>1,152,954</b>	<b>1,302,717</b>	<b>1,428,361</b>	<b>891,763</b>	<b>26.3</b>	<b>14.5</b>	<b>13.0</b>	<b>9.6</b>	
October	233,190	290,959	334,410	390,637	408,922	414,077	24.8	14.9	16.8	4.7	1.3
November	265,539	333,482	386,737	411,501	444,640	477,686	25.6	16.0	6.4	8.1	7.4
December	298,344	382,326	431,807	500,579	574,799		28.1	12.9	15.9	14.8	
<b>Total</b>	<b>2,881,862</b>	<b>3,584,307</b>	<b>4,210,165</b>	<b>4,502,775</b>	<b>4,775,231</b>	<b>4,400,178</b>	<b>24.4</b>	<b>17.5</b>	<b>7.0</b>	<b>6.1</b>	<b>4.8</b>



Source: Statistics and Tourism Information Department, MOT

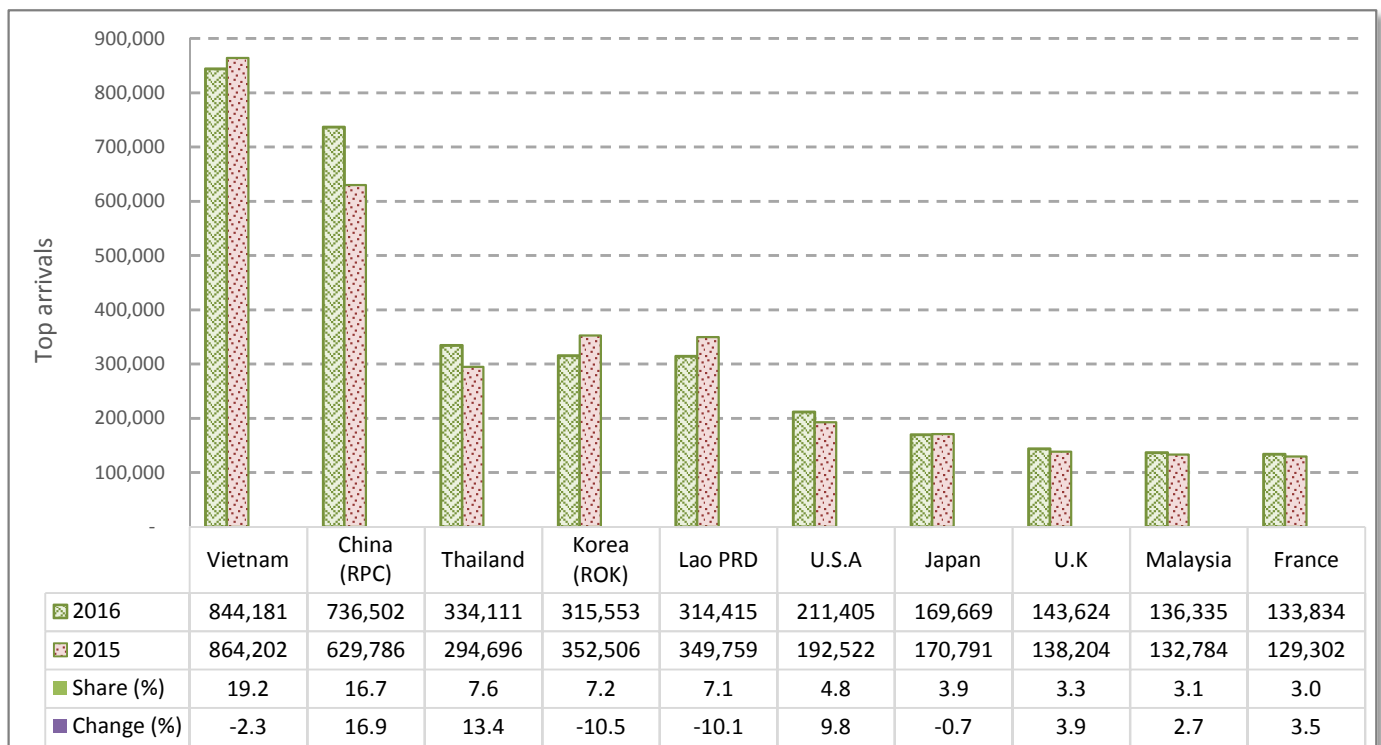
# CAMBODIA: TOURISM STATISTICS REPORT IN THE FIRST ELEVEN MONTHS 2016

## I. INBOUND TOURISM

### 1. International tourist arrivals in January - November 2016

	Inbound tourism		Share (%)		Change (%)
	2015	2016	2015	2016	2016*/15
<b>Air</b>	<b>2,220,944</b>	<b>2,400,218</b>	<b>52.9</b>	<b>54.5</b>	<b>8.1</b>
Phnom Penh Int'l Airport (PNH)	961,931	1,046,992	22.9	23.8	8.8
Siem Reap Int'l Airport (REP)	1,259,013	1,326,737	30.0	30.2	5.4
Kong Keng (KOS)		26,489		0.6	
<b>Land and Waterways</b>	<b>1,979,488</b>	<b>1,999,960</b>	<b>47.1</b>	<b>45.5</b>	<b>1.0</b>
Land	1,852,212	1,861,262	44.1	42.3	0.5
Waterways	127,276	138,698	3.0	3.2	9.0
<b>Total</b>	<b>4,200,432</b>	<b>4,400,178</b>	<b>100.0</b>	<b>100.0</b>	<b>4.8</b>

### 2. Top ten markets arrivals in January - November 2016



## II. OUTBOUND TOURISM

### Outbound tourism in January - November 2016

	Outbound tourism		Change (%)
	2015	2016	2016*/15
Cambodian Outbound Tourists	1,094,598	1,306,393	19.3
International Tourists Departure	3,839,483	4,042,135	5.3

## III. INTERNAL TOURISM

### Foreign visitor arrivals to the regions in January - November 2016

	Arrivals		Share (%)		Change (%)
	2015	2016	2015	2016	2016*/15
Phnom Penh & Surrounding	2,298,786	2,445,830	47.8	48.6	6.4
Siem Reap Angkor	1,901,646	1,954,708	39.5	38.8	2.8
Coastal Areas	555,855	574,985	11.5	11.4	3.4
Eco-tourism Areas	56,476	57,951	1.2	1.2	2.6
<b>Total</b>	<b>4,812,763</b>	<b>5,033,474</b>	<b>100.0</b>	<b>100.0</b>	<b>4.6</b>

## International Tourist Arrivals to Cambodia by Country of Residence in January - November 2016

(by all means of transportation)

Regions Country of Residence	2015	2016			Total	Female	Share	Change
		Purposes of Visit					(%)	(%)
		Holiday	Business	Others			2016*	2016*/15
<b>Grand Total</b>	<b>4,200,432</b>	<b>3,856,451</b>	<b>316,557</b>	<b>227,170</b>	<b>4,400,178</b>	<b>1,881,815</b>	<b>100.0</b>	<b>4.8</b>
<b>Asia and the Pacific</b>	<b>3,266,681</b>	<b>2,901,466</b>	<b>275,170</b>	<b>205,247</b>	<b>3,381,883</b>	<b>1,418,411</b>	<b>76.9</b>	<b>3.5</b>
<b>ASEAN (Southeast Asia)</b>	<b>1,820,156</b>	<b>1,558,345</b>	<b>106,027</b>	<b>178,884</b>	<b>1,843,256</b>	<b>761,430</b>	<b>41.9</b>	<b>1.3</b>
Brunei Darussalam	740	677	11	56	744	285	0.0	0.5
Indonesia	37,622	25,774	12,896	5,005	43,675	11,211	1.0	16.1
Lao PDR	349,759	302,512	205	11,698	314,415	171,564	7.1	-10.1
Malaysia	132,784	123,593	9,928	2,814	136,335	45,239	3.1	2.7
Myanmar	8,006	9,740	563	1,138	11,441	4,743	0.3	42.9
Philippines	74,948	76,324	10,881	10,773	97,978	50,719	2.2	30.7
Singapore	57,399	55,032	3,178	2,166	60,376	19,262	1.4	5.2
Thailand	294,696	284,971	19,151	29,989	334,111	119,382	7.6	13.4
Vietnam	864,202	679,722	49,214	115,245	844,181	339,025	19.2	-2.3
<b>Northeast Asia</b>	<b>1,265,575</b>	<b>1,157,511</b>	<b>157,107</b>	<b>16,917</b>	<b>1,331,535</b>	<b>570,363</b>	<b>30.3</b>	<b>5.2</b>
China	629,786	625,803	100,973	9,726	736,502	327,041	16.7	16.9
Hong Kong (China)	11,983	13,614	221	192	14,027	6,495	0.3	17.1
Japan	170,791	144,558	22,211	2,900	169,669	64,390	3.9	-0.7
Korea (ROK)	352,506	295,117	16,644	3,792	315,553	134,733	7.2	-10.5
Macau (China)	352	288	23	49	360	99	0.0	2.3
Mongolia	402	338	41	45	424	242	0.0	5.5
Taiwan (China)	99,755	77,793	16,994	213	95,000	37,363	2.2	-4.8
<b>Southern Asia</b>	<b>39,343</b>	<b>38,227</b>	<b>4,927</b>	<b>4,580</b>	<b>47,734</b>	<b>12,924</b>	<b>1.1</b>	<b>21.3</b>
Afghanistan	97	99	6	36	141	35	0.0	45.4
Bangladesh	1,911	1,158	359	185	1,702	280	0.0	-10.9
Bhutan	174	109	6	70	185	61	0.0	6.3
India	32,048	32,646	3,235	3,937	39,818	11,212	0.9	24.2
Nepal	1,999	1,753	319	112	2,184	585	0.0	9.3
Pakistan	1,359	972	406	109	1,487	263	0.0	9.4
Sri Lanka	1,755	1,490	596	131	2,217	488	0.1	26.3
<b>Oceania</b>	<b>136,317</b>	<b>142,099</b>	<b>6,917</b>	<b>1,609</b>	<b>150,625</b>	<b>70,007</b>	<b>3.4</b>	<b>10.5</b>
Australia	116,344	121,726	5,824	1,435	128,985	59,962	2.9	10.9
Fiji	174	148	26	33	207	75	0.0	19.0
New Zealand	19,799	20,225	1,067	141	21,433	9,970	0.5	8.3
Other Asia & the Pacific	5,290	5,284	192	3,257	8,733	3,687	0.2	65.1
<b>Europe</b>	<b>633,677</b>	<b>641,188</b>	<b>27,521</b>	<b>12,413</b>	<b>681,122</b>	<b>310,596</b>	<b>15.5</b>	<b>7.5</b>
<b>Northern Europe</b>	<b>188,013</b>	<b>183,272</b>	<b>8,802</b>	<b>2,348</b>	<b>194,422</b>	<b>85,282</b>	<b>4.4</b>	<b>3.4</b>
Denmark	10,258	9,771	359	153	10,283	4,463	0.2	0.2
Finland	5,962	4,957	273	95	5,325	2,199	0.1	-10.7
Iceland	662	707	13	27	747	295	0.0	12.8
Ireland	10,198	10,429	417	97	10,943	5,157	0.2	7.3
Norway	8,558	8,348	235	97	8,680	3,930	0.2	1.4
Sweden	14,171	14,018	611	191	14,820	6,296	0.3	4.6
United Kingdom	138,204	135,042	6,894	1,688	143,624	62,942	3.3	3.9
<b>Western Europe</b>	<b>278,506</b>	<b>289,381</b>	<b>13,493</b>	<b>4,938</b>	<b>307,812</b>	<b>138,796</b>	<b>7.0</b>	<b>10.5</b>
Austria	8,821	9,706	220	75	10,001	4,488	0.2	13.4
Belgium	15,403	14,807	683	323	15,813	6,785	0.4	2.7
France	129,302	123,378	8,006	2,450	133,834	60,709	3.0	3.5
Germany	79,509	92,340	2,353	1,371	96,064	43,473	2.2	20.8
Luxembourg	581	646	13	19	678	283	0.0	16.7
Monaco	77	47	4	16	67	14	0.0	-13.0
Netherlands	25,728	26,007	1,248	387	27,642	12,498	0.6	7.4
Switzerland	19,085	22,450	966	297	23,713	10,546	0.5	24.2
<b>Central / Eastern Europe</b>	<b>87,248</b>	<b>81,832</b>	<b>2,617</b>	<b>1,675</b>	<b>86,124</b>	<b>44,305</b>	<b>2.0</b>	<b>-1.3</b>
Bulgaria	1,498	1,442	37	64	1,543	776	0.0	3.0
Czech Republic	4,942	4,927	80	69	5,076	2,308	0.1	2.7
Estonia	1,611	1,533	36	20	1,589	714	0.0	-1.4
Hungary	3,705	3,939	133	57	4,129	1,997	0.1	11.4
Kazakhstan	1,998	1,226	224	23	1,473	759	0.0	-26.3
Kyrgyzstan	143	114	19	20	153	67	0.0	7.0
Latvia	898	754	36	22	812	380	0.0	-9.6
Lithuania	1,640	1,736	65	28	1,829	910	0.0	11.5
Poland	12,363	13,803	235	95	14,133	7,028	0.3	14.3
Romania	2,078	2,103	61	78	2,242	1,235	0.1	7.9
Russian Federation	48,985	43,574	1,366	504	45,444	24,448	1.0	-7.2
Slovakia	2,058	2,400	62	35	2,497	1,177	0.1	21.3
Ukraine	4,658	3,928	212	627	4,767	2,317	0.1	2.3
Uzbekistan	671	353	51	33	437	189	0.0	-34.9

Source: Statistics and Tourism Information Department, MOT

## International Tourist Arrivals to Cambodia by Country of Residence in January - November 2016

(by all means of transportation)

Regions Country of Residence	2015	2016			Total	Female	Share	Change
		Purposes of Visit					(%)	(%)
		Holiday	Business	Others			2016*	2016*/15
<b>Grand Total</b>	<b>4,200,432</b>	<b>3,856,451</b>	<b>316,557</b>	<b>227,170</b>	<b>4,400,178</b>	<b>1,881,815</b>	<b>100.0</b>	<b>4.8</b>
<b>Southern Europe</b>	<b>75,839</b>	<b>82,086</b>	<b>2,467</b>	<b>1,504</b>	<b>86,057</b>	<b>39,543</b>	<b>2.0</b>	<b>13.5</b>
Croatia	1,118	875	35	80	990	438	0.0	-11.4
Greece	1,405	1,264	70	105	1,439	578	0.0	2.4
Italy	27,975	29,817	1,099	430	31,346	13,557	0.7	12.1
Malta	416	434	7	23	464	208	0.0	11.5
Portugal	5,230	6,280	165	124	6,569	3,220	0.1	25.6
Serbia	686	600	33	264	897	417	0.0	30.8
Slovenia	1,089	959	56	19	1,034	478	0.0	-5.1
Spain	32,649	36,671	548	182	37,401	18,330	0.8	14.6
Turkey	5,271	5,186	454	277	5,917	2,317	0.1	12.3
Other Europe	4,071	4,617	142	1,948	6,707	2,670	0.2	64.8
<b>Americas</b>	<b>279,726</b>	<b>292,551</b>	<b>11,814</b>	<b>7,996</b>	<b>312,361</b>	<b>143,607</b>	<b>7.1</b>	<b>11.7</b>
<b>North America</b>	<b>249,534</b>	<b>254,891</b>	<b>11,333</b>	<b>6,357</b>	<b>272,581</b>	<b>124,472</b>	<b>6.2</b>	<b>9.2</b>
Canada	50,739	51,093	2,301	559	53,953	25,489	1.2	6.3
Mexico	6,273	7,056	60	107	7,223	3,705	0.2	15.1
United States	192,522	196,742	8,972	5,691	211,405	95,278	4.8	9.8
<b>Central America</b>	<b>632</b>	<b>681</b>	<b>31</b>	<b>72</b>	<b>784</b>	<b>308</b>	<b>0.0</b>	<b>24.1</b>
Costa Rica	394	481	8	17	506	233	0.0	28.4
Honduras	106	133	16	35	184	38	0.0	73.6
Jamaica	132	67	7	20	94	37	0.0	-28.8
<b>South America</b>	<b>26,601</b>	<b>33,962</b>	<b>354</b>	<b>775</b>	<b>35,091</b>	<b>17,235</b>	<b>0.8</b>	<b>31.9</b>
Argentina	7,069	12,382	50	54	12,486	6,157	0.3	76.6
Brazil	9,261	9,985	164	113	10,262	5,011	0.2	10.8
Chile	4,571	5,688	35	58	5,781	3,017	0.1	26.5
Colombia	2,632	2,894	63	37	2,994	1,479	0.1	13.8
Ecuador	501	509	12	26	547	267	0.0	9.2
Peru	948	1,073	10	441	1,524	571	0.0	60.8
Uruguay	958	1,085	9	22	1,116	556	0.0	16.5
Venezuela	661	346	11	24	381	177	0.0	-42.4
Other America	2,959	3,017	96	792	3,905	1,592	0.1	32.0
<b>Africa</b>	<b>7,637</b>	<b>6,811</b>	<b>1,364</b>	<b>1,074</b>	<b>9,249</b>	<b>3,555</b>	<b>0.2</b>	<b>21.1</b>
<b>North Africa</b>	<b>743</b>	<b>787</b>	<b>62</b>	<b>66</b>	<b>915</b>	<b>373</b>	<b>0.0</b>	<b>23.1</b>
Morocco	448	389	49	22	460	197	0.0	2.7
Sudan	123	86	2	23	111	24	0.0	-9.8
Tunisia	172	312	11	21	344	152	0.0	100.0
<b>Subsaharan Africa</b>	<b>6,259</b>	<b>5,331</b>	<b>1,256</b>	<b>806</b>	<b>7,393</b>	<b>2,870</b>	<b>0.2</b>	<b>18.1</b>
Cameroon	185	83	14	13	110	33	0.0	-40.5
Congo	96	68	8	26	102	32	0.0	6.3
Ghana	86	89	15	73	177	37	0.0	105.8
Kenya	282	275	27	42	344	169	0.0	22.0
Liberia	52	27	1	14	42	8	0.0	-19.2
Nigeria	988	555	759	40	1,354	112	0.0	37.0
South Africa	4,279	3,921	393	252	4,566	2,269	0.1	6.7
Tanzania	80	107	7	293	407	65	0.0	408.8
Uganda	109	99	5	14	118	51	0.0	8.3
Zimbabwe	102	107	27	39	173	94	0.0	69.6
Other Africa	635	693	46	202	941	312	0.0	48.2
<b>Middle East</b>	<b>12,711</b>	<b>14,435</b>	<b>688</b>	<b>440</b>	<b>15,563</b>	<b>5,646</b>	<b>0.4</b>	<b>22.4</b>
Egypt	521	549	55	25	629	183	0.0	20.7
Iran	434	468	33	33	534	158	0.0	23.0
Iraq	145	128	13	32	173	23	0.0	19.3
Israel	8,307	9,647	229	52	9,928	4,373	0.2	19.5
Jordan	315	760	206	23	989	201	0.0	214.0
Kuwait	881	645	8	31	684	53	0.0	-22.4
Oman	194	171	1	16	188	36	0.0	-3.1
Palestine	74	67	6	14	87	23	0.0	17.6
Qatar	107	59	5	15	79	17	0.0	-26.2
Saudi Arabia	287	260	16	29	305	30	0.0	6.3
Syria	234	513	64	18	595	148	0.0	154.3
United Arab Emirates	355	291	5	17	313	113	0.0	-11.8
Yemen	349	261	11	19	291	49	0.0	-16.6
Other Middle East	508	616	36	116	768	239	0.0	51.2

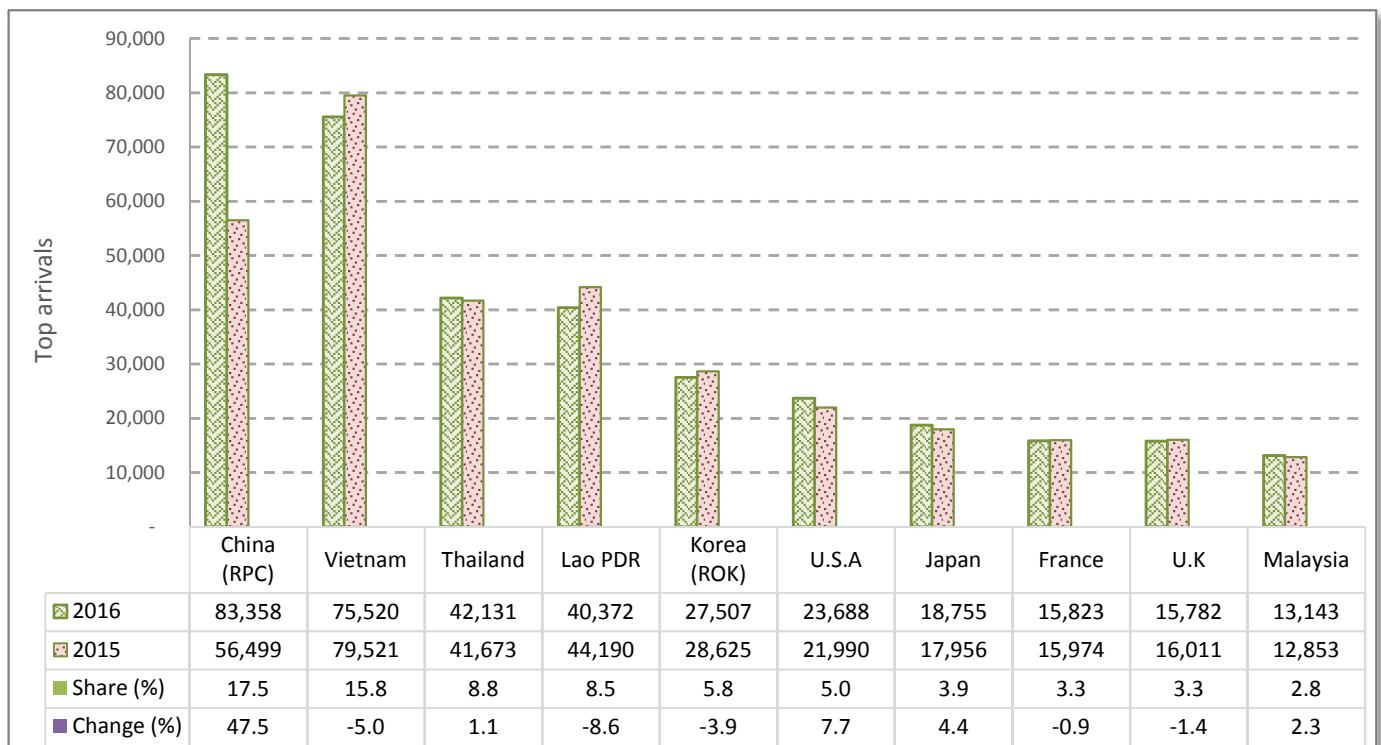
# CAMBODIA: TOURISM STATISTICS REPORT IN NOVEMBER 2016

## I. INBOUND TOURISM

### 1. International tourist arrivals in November 2016

	Inbound tourism		Share (%)		Change (%)
	2015	2016	2015	2016	2016*/15
<b>Air</b>	<b>234,678</b>	<b>269,839</b>	<b>52.8</b>	<b>56.5</b>	<b>15.0</b>
Phnom Penh Int'l Airport (PNH)	97,726	111,098	22.0	23.3	13.7
Siem Reap Int'l Airport (REP)	136,952	153,090	30.8	32.0	11.8
Kong Keng (KOS)		5,651		1.2	
<b>Land and Waterways</b>	<b>209,962</b>	<b>207,847</b>	<b>47.2</b>	<b>43.5</b>	<b>-1.0</b>
Land	195,897	192,823	44.1	40.4	-1.6
Waterways	14,065	15,024	3.2	3.1	6.8
<b>Total</b>	<b>444,640</b>	<b>477,686</b>	<b>100.0</b>	<b>100.0</b>	<b>7.4</b>

### 2. Top ten markets arrivals in November 2016



## II. OUTBOUND TOURISM

### Outbound tourism in November 2016

	Outbound tourism		Change (%)
	2015	2016	2016*/15
Cambodian Outbound Tourists	108,859	123,723	13.7
International Tourists Departure	350,634	401,042	14.4

## III. INTERNAL TOURISM

### Foreign visitor arrivals to the regions in November 2016

	Arrivals		Share (%)		Change (%)
	2015	2016	2015	2016	2016*/15
Phnom Penh & Surrounding	244,128	257,769	49.4	48.2	5.6
Siem Reap Angkor	200,512	219,917	40.5	41.2	9.7
Coastal Areas	43,621	50,727	8.8	9.5	16.3
Eco-tourism Areas	6,365	5,903	1.3	1.1	-7.3
<b>Total</b>	<b>494,626</b>	<b>534,316</b>	<b>100.0</b>	<b>100.0</b>	<b>8.0</b>

## International Tourist Arrivals to Cambodia by Country of Residence in November 2016

(by all means of transportation)

Regions Country of Residence	2015	2016			Total	Female	Share	Change
		Purposes of Visit					(%)	(%)
		Holiday	Business	Others			2016*	2016*/15
<b>Grand Total</b>	<b>444,640</b>	<b>424,586</b>	<b>28,737</b>	<b>24,363</b>	<b>477,686</b>	<b>201,710</b>	<b>100.0</b>	<b>7.4</b>
<b>Asia and the Pacific</b>	<b>329,512</b>	<b>306,845</b>	<b>24,937</b>	<b>22,332</b>	<b>354,114</b>	<b>143,204</b>	<b>74.1</b>	<b>7.5</b>
<b>ASEAN (Southeast Asia)</b>	<b>196,896</b>	<b>165,285</b>	<b>9,125</b>	<b>18,854</b>	<b>193,264</b>	<b>74,337</b>	<b>40.5</b>	<b>-1.8</b>
Brunei Darussalam	75	75	1	4	80	37	0.0	6.7
Indonesia	3,523	2,565	1,186	760	4,511	1,003	0.9	28.0
Lao PDR	44,190	39,351	13	1,008	40,372	20,542	8.5	-8.6
Malaysia	12,853	11,877	919	347	13,143	4,519	2.8	2.3
Myanmar	815	996	55	141	1,192	474	0.2	46.3
Philippines	7,071	7,933	1,032	821	9,786	5,231	2.0	38.4
Singapore	7,175	5,638	312	579	6,529	2,217	1.4	-9.0
Thailand	41,673	36,164	1,617	4,350	42,131	12,725	8.8	1.1
Vietnam	79,521	60,686	3,990	10,844	75,520	27,589	15.8	-5.0
<b>Northeast Asia</b>	<b>113,492</b>	<b>121,977</b>	<b>14,755</b>	<b>2,302</b>	<b>139,034</b>	<b>59,321</b>	<b>29.1</b>	<b>22.5</b>
China	56,499	72,798	9,282	1,278	83,358	36,732	17.5	47.5
Hong Kong (China)	1,719	918	14	117	1,049	429	0.2	-39.0
Japan	17,956	16,111	2,223	421	18,755	7,484	3.9	4.4
Korea (ROK)	28,625	25,502	1,535	470	27,507	11,514	5.8	-3.9
Macau (China)	19	22	1	5	28	3	0.0	47.4
Mongolia	35	24	6	4	34	14	0.0	-2.9
Taiwan (China)	8,639	6,602	1,694	7	8,303	3,145	1.7	-3.9
<b>Southern Asia</b>	<b>4,102</b>	<b>4,182</b>	<b>484</b>	<b>402</b>	<b>5,068</b>	<b>1,554</b>	<b>1.1</b>	<b>23.5</b>
Afghanistan	8	15	1	7	23	5	0.0	187.5
Bangladesh	168	134	41	16	191	43	0.0	13.7
Bhutan	20	12	0	1	13	2	0.0	-35.0
India	3,354	3,588	293	348	4,229	1,375	0.9	26.1
Nepal	226	155	43	9	207	59	0.0	-8.4
Pakistan	147	136	40	9	185	38	0.0	25.9
Sri Lanka	179	142	66	12	220	32	0.0	22.9
<b>Oceania</b>	<b>14,392</b>	<b>14,172</b>	<b>562</b>	<b>164</b>	<b>14,898</b>	<b>7,119</b>	<b>3.1</b>	<b>3.5</b>
Australia	12,459	12,111	473	146	12,730	6,076	2.7	2.2
Fiji	15	44	0	1	45	22	0.0	200.0
New Zealand	1,918	2,017	89	17	2,123	1,021	0.4	10.7
Other Asia & the Pacific	630	1,229	11	610	1,850	873	0.4	193.7
<b>Europe</b>	<b>81,072</b>	<b>80,138</b>	<b>2,560</b>	<b>1,281</b>	<b>83,979</b>	<b>39,739</b>	<b>17.6</b>	<b>3.6</b>
<b>Northern Europe</b>	<b>21,493</b>	<b>20,036</b>	<b>753</b>	<b>220</b>	<b>21,009</b>	<b>9,713</b>	<b>4.4</b>	<b>-2.3</b>
Denmark	889	826	30	17	873	391	0.2	-1.8
Finland	813	664	15	5	684	323	0.1	-15.9
Iceland	51	108	1	2	111	52	0.0	117.6
Ireland	900	1,008	38	14	1,060	513	0.2	17.8
Norway	986	840	17	17	874	409	0.2	-11.4
Sweden	1,843	1,541	59	25	1,625	758	0.3	-11.8
United Kingdom	16,011	15,049	593	140	15,782	7,267	3.3	-1.4
<b>Western Europe</b>	<b>37,042</b>	<b>36,563</b>	<b>1,248</b>	<b>461</b>	<b>38,272</b>	<b>17,862</b>	<b>8.0</b>	<b>3.3</b>
Austria	1,089	1,159	33	6	1,198	568	0.3	10.0
Belgium	2,263	2,104	58	20	2,182	985	0.5	-3.6
France	15,974	14,863	731	229	15,823	7,470	3.3	-0.9
Germany	12,038	12,669	257	106	13,032	6,056	2.7	8.3
Luxembourg	63	66	1	3	70	32	0.0	11.1
Monaco	6	4	1	2	7	1	0.0	16.7
Netherlands	2,968	3,008	94	71	3,173	1,446	0.7	6.9
Switzerland	2,641	2,690	73	24	2,787	1,304	0.6	5.5
<b>Central / Eastern Europe</b>	<b>12,779</b>	<b>13,097</b>	<b>311</b>	<b>174</b>	<b>13,582</b>	<b>7,028</b>	<b>2.8</b>	<b>6.3</b>
Bulgaria	248	222	7	4	233	122	0.0	-6.0
Czech Republic	706	911	9	12	932	453	0.2	32.0
Estonia	294	299	4	1	304	147	0.1	3.4
Hungary	544	566	15	8	589	304	0.1	8.3
Kazakhstan	137	106	31	3	140	71	0.0	2.2
Kyrgyzstan	9	9	2	1	12	5	0.0	33.3
Latvia	194	141	2	2	145	74	0.0	-25.3
Lithuania	268	320	8	3	331	171	0.1	23.5
Poland	2,435	3,091	42	5	3,138	1,590	0.7	28.9
Romania	294	373	4	9	386	208	0.1	31.3
Russian Federation	6,889	6,138	149	57	6,344	3,401	1.3	-7.9
Slovakia	282	474	8	7	489	242	0.1	73.4
Ukraine	426	375	26	59	460	209	0.1	8.0
Uzbekistan	53	72	4	3	79	31	0.0	49.1

Source: Statistics and Tourism Information Department, MOT

## International Tourist Arrivals to Cambodia by Country of Residence in November 2016

(by all means of transportation)

Regions Country of Residence	2015	2016			Total	Female	Share	Change
		Purposes of Visit					(%)	(%)
		Holiday	Business	Others			2016*	2016*/15
<b>Grand Total</b>	<b>444,640</b>	<b>424,586</b>	<b>28,737</b>	<b>24,363</b>	<b>477,686</b>	<b>201,710</b>	<b>100.0</b>	<b>7.4</b>
<b>Southern Europe</b>	<b>9,287</b>	<b>9,419</b>	<b>238</b>	<b>101</b>	<b>9,758</b>	<b>4,609</b>	<b>2.0</b>	<b>5.1</b>
Croatia	168	106	2	3	111	50	0.0	-33.9
Greece	177	142	3	6	151	65	0.0	-14.7
Italy	3,798	3,288	123	22	3,433	1,580	0.7	-9.6
Malta	30	24	1	2	27	12	0.0	-10.0
Portugal	827	1,044	9	2	1,055	539	0.2	27.6
Serbia	64	75	4	6	85	41	0.0	32.8
Slovenia	145	87	4	3	94	42	0.0	-35.2
Spain	3,359	3,978	59	18	4,055	1,965	0.8	20.7
Turkey	719	675	33	39	747	315	0.2	3.9
Other Europe	471	1,023	10	325	1,358	527	0.3	188.3
<b>Americas</b>	<b>32,054</b>	<b>35,497</b>	<b>1,085</b>	<b>581</b>	<b>37,163</b>	<b>17,886</b>	<b>7.8</b>	<b>15.9</b>
<b>North America</b>	<b>28,812</b>	<b>30,279</b>	<b>1,036</b>	<b>501</b>	<b>31,816</b>	<b>15,304</b>	<b>6.7</b>	<b>10.4</b>
Canada	6,170	6,941	230	42	7,213	3,547	1.5	16.9
Mexico	652	904	2	9	915	471	0.2	40.3
United States	21,990	22,434	804	450	23,688	11,286	5.0	7.7
<b>Central America</b>	<b>41</b>	<b>55</b>	<b>5</b>	<b>9</b>	<b>69</b>	<b>28</b>	<b>0.0</b>	<b>68.3</b>
Costa Rica	28	41	1	2	44	19	0.0	57.1
Honduras	3	9	3	2	14	6	0.0	366.7
Jamaica	10	5	1	5	11	3	0.0	10.0
<b>South America</b>	<b>2,832</b>	<b>4,672</b>	<b>36</b>	<b>34</b>	<b>4,742</b>	<b>2,362</b>	<b>1.0</b>	<b>67.4</b>
Argentina	795	1,064	3	4	1,071	540	0.2	34.7
Brazil	1,152	2,401	19	6	2,426	1,229	0.5	110.6
Chile	354	475	3	8	486	247	0.1	37.3
Colombia	262	390	8	3	401	183	0.1	53.1
Ecuador	48	58	1	2	61	32	0.0	27.1
Peru	133	186	2	4	192	88	0.0	44.4
Uruguay	52	59	0	4	63	25	0.0	21.2
Venezuela	36	39	0	3	42	18	0.0	16.7
Other America	369	491	8	37	536	192	0.1	45.3
<b>Africa</b>	<b>673</b>	<b>673</b>	<b>117</b>	<b>98</b>	<b>888</b>	<b>312</b>	<b>0.2</b>	<b>31.9</b>
<b>North Africa</b>	<b>66</b>	<b>66</b>	<b>7</b>	<b>5</b>	<b>78</b>	<b>30</b>	<b>0.0</b>	<b>18.2</b>
Morocco	41	36	6	2	44	16	0.0	7.3
Sudan	9	5	0	1	6	1	0.0	-33.3
Tunisia	16	25	1	2	28	13	0.0	75.0
<b>Subsaharan Africa</b>	<b>531</b>	<b>487</b>	<b>105</b>	<b>65</b>	<b>657</b>	<b>230</b>	<b>0.1</b>	<b>23.7</b>
Cameroon	9	7	2	1	10	3	0.0	11.1
Congo	9	7	0	1	8	3	0.0	-11.1
Ghana	6	7	1	3	11	1	0.0	83.3
Kenya	34	28	3	1	32	10	0.0	-5.9
Liberia	4	2	0	1	3	1	0.0	-25.0
Nigeria	96	59	68	2	129	10	0.0	34.4
South Africa	353	351	30	15	396	188	0.1	12.2
Tanzania	5	4	0	34	38	3	0.0	660.0
Uganda	5	15	0	2	17	7	0.0	240.0
Zimbabwe	10	7	1	5	13	4	0.0	30.0
Other Africa	76	120	5	28	153	52	0.0	101.3
<b>Middle East</b>	<b>1,329</b>	<b>1,433</b>	<b>38</b>	<b>71</b>	<b>1,542</b>	<b>569</b>	<b>0.3</b>	<b>16.0</b>
Egypt	36	68	8	4	80	35	0.0	122.2
Iran	36	55	1	3	59	26	0.0	63.9
Iraq	20	24	0	17	41	1	0.0	105.0
Israel	947	969	15	5	989	415	0.2	4.4
Jordan	18	21	5	7	33	4	0.0	83.3
Kuwait	37	18	1	4	23	6	0.0	-37.8
Oman	17	15	0	3	18	1	0.0	5.9
Palestine	13	7	1	1	9	1	0.0	-30.8
Qatar	5	3	0	1	4	0	0.0	-20.0
Saudi Arabia	21	15	0	3	18	4	0.0	-14.3
Syria	12	41	1	2	44	13	0.0	266.7
United Arab Emirates	16	12	1	1	14	4	0.0	-12.5
Yemen	81	26	1	3	30	6	0.0	-63.0
Other Middle East	70	159	4	17	180	53	0.0	157.1