



**KINGDOM OF CAMBODIA
NATION RELIGION KING**



TOURISM STATISTICS REPORT

March 2010

MINISTRY OF TOURISM

Statistics and Tourism Information Department

No. A3, Street 169, Sangkat Veal Vong, Khan 7 Makara, Phnom Penh, Cambodia.

Fax: +855 23 885003

E-mail: info@mot.gov.kh

Web site: www.mot.gov.kh

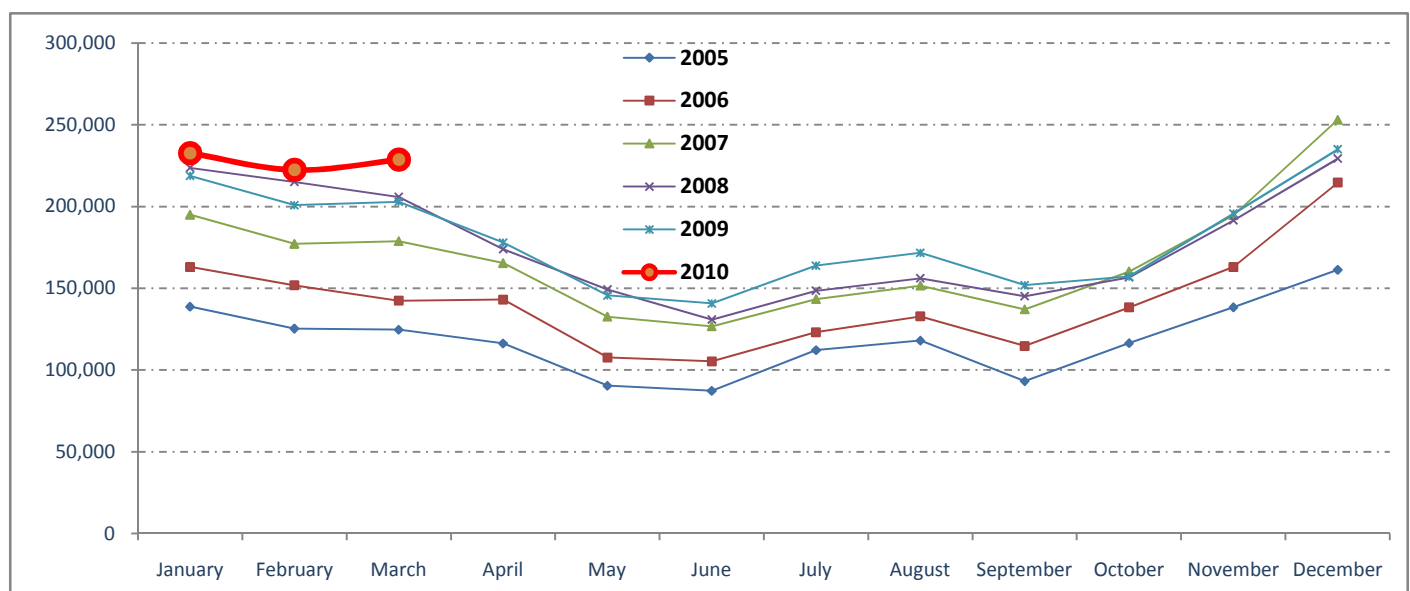
Tourism Highlights

Visitor Arrivals, Average Length of Stay, Hotels Occupancy and Tourism Receipts 1993 - 2009

Years	Visitor Arrivals		Average Length	Hotels Occupancy	Tourism Receipts
	number	change (%)	of Stay (days)	(%)	(million US\$)
1993	118,183	0.00	N/A	N/A	N/A
1994	176,617	49.44%	N/A	N/A	N/A
1995	219,680	24.38%	8.00	37.00	100
1996	260,489	18.58%	7.50	40.00	118
1997	218,843	-15.99%	6.40	30.00	103
1998	289,524	32.30%	5.20	40.00	166
1999	367,743	27.02%	5.50	44.00	190
2000	466,365	26.82%	5.50	45.00	228
2001	604,919	29.71%	5.50	48.00	304
2002	786,524	30.02%	5.80	50.00	379
2003	701,014	-10.87%	5.50	50.00	347
2004	1,055,202	50.53%	6.30	52.00	578
2005	1,421,615	34.72%	6.30	52.00	832
2006	1,700,041	19.59%	6.50	54.79	1,049
2007	2,015,128	18.53%	6.50	54.79	1,400
2008	2,125,465	5.48%	6.65	62.68	1,595
2009	2,161,577	1.70%	6.45	63.57	1,561

International visitor arrivals to Cambodia

Destination	Months	2005	2006	2007	2008	2009	2010	change(%) 2009*/08
Cambodia	Q1	388,670	457,305	550,813	644,205	622,288	683,692	9.87%
Visitor arrivals by all means of transportation, include day visitors	January	138,718	163,047	194,932	223,581	218,691	232,590	6.36%
	February	125,326	151,821	177,130	214,902	200,789	222,354	10.74%
	March	124,626	142,437	178,751	205,722	202,808	228,748	12.79%
	Q2	293,761	356,087	424,536	454,031	464,230	0	
	April	116,219	143,069	165,347	173,903	177,955		
	May	90,314	107,720	132,512	149,275	145,564		
	June	87,228	105,298	126,677	130,853	140,711		
	Q3	323,217	370,620	431,815	449,693	487,422	0	
	July	112,116	123,047	143,310	148,449	163,817		
	August	117,943	132,792	151,478	156,098	171,668		
	September	93,158	114,781	137,027	145,146	151,937		
	Q4	415,967	516,029	607,964	577,536	587,637	0	
	October	116,382	138,296	160,235	156,718	157,105		
	November	138,293	163,068	194,646	191,549	195,570		
	December	161,292	214,665	253,083	229,269	234,962		
	Total	1,421,615	1,700,041	2,015,128	2,125,465	2,161,577	683,692	9.87%



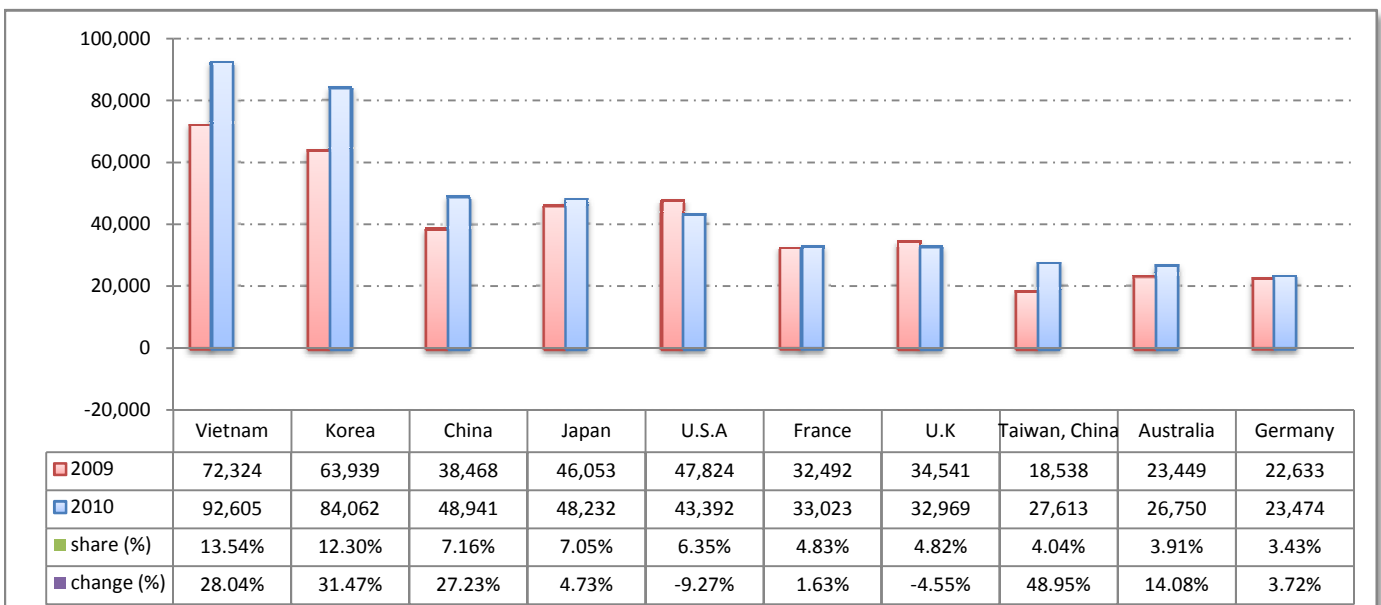
I. Visitor arrivals to Cambodia from January - March was:

683,692

II. Mode of arrivals

	visitors	share (%)
- Air	371,506	54.34
Phnom Penh Int'l Airport	158,979	23.25
Siem Reap Int'l Airport	212,527	31.09
- Land and Water ways	273,271	39.97
Land	246,442	36.05
Boat	26,829	3.92
- Same-day visitors	38,915	5.69
Total	683,692	100.00

III. Top ten markets arrivals to Cambodia from January - March in 2010



IV. Visitor arrivals to Cambodia from January - March in 2010

Visitor arrivals			share (%)		change (%)
	2009	2010	2009	2010	2010*/09
Air	335,213	371,506	53.87	54.34	10.83
Phnom Penh Int'l Airport	141,496	158,979	22.74	23.25	12.36
Siem Reap Int'l Airport	193,717	212,527	31.13	31.09	9.71
Land and Water ways	253,408	273,271	40.72	39.97	7.84
Land	220,179	246,442	35.38	36.05	11.93
Boat	33,229	26,829	5.34	3.92	-19.26
Sub-Total	588,621	644,777	94.59	94.31	9.54
Same-day visitors	33,667	38,915	5.41	5.69	15.59
Total	622,288	683,692	100.00	100.00	9.87

V. Remark: Percentage share of visitor arrivals at destinations from January - March in 2010

Visitor arrivals			share (%)		change (%)
	2009	2010	2009	2010	2010*/09
Phnom Penh & Other Destinations	324,124	317,590	52.09%	46.45%	-2.02%
Siem Reap Province	298,164	366,102	47.91%	53.55%	22.79%
Total	622,288	683,692	100.00%	100.00%	9.87%

VI. Outbound tourist departures from January - March in 2010

Outbound tourists	2009	2010	change (%)
Cambodian outbound tourist departure:	61,450	106,095	72.65%
International outbound tourists departure:	572,036	641,578	12.16%

Visitor Arrivals to Cambodia by Country of Residence from January - March in 2010

(by all means of transportation)

Regions Country of Residence	2010						share	change
	2009	Purpose of Visit			Total	Females	(%)	(%)
		Tourists	Business	Others			2010*	2010*/09
GRAND TOTAL	622,288	638,799	35,931	8,962	683,692	301,986	100.00%	9.87%
Asia and the Pacific	366,849	386,521	29,141	4,528	420,190	188,669	61.46%	14.54%
ASEAN	166,395	161,781	10,477	2,210	174,468	74,559	25.52%	4.85%
Brunei Darussalam	75	73	2	25	100	58	0.01%	33.33%
Indonesia	2,095	1,921	704	90	2,715	1,120	0.40%	29.59%
Lao PDR	24,801	15,494	31	164	15,689	10,806	2.29%	-36.74%
Malaysia	18,386	17,103	1,353	66	18,522	6,403	2.71%	0.74%
Myanmar	569	496	103	22	621	240	0.09%	9.14%
Philippines	12,870	10,912	1,345	318	12,575	7,641	1.84%	-2.29%
Singapore	8,835	9,625	423	55	10,103	3,545	1.48%	14.35%
Thailand	26,440	17,363	3,675	500	21,538	6,789	3.15%	-18.54%
Vietnam	72,324	88,794	2,841	970	92,605	37,957	13.54%	28.04%
Eastern Asia	168,010	192,434	16,228	1,364	210,026	98,685	30.72%	25.01%
China	38,468	38,933	9,653	355	48,941	22,073	7.16%	27.23%
Hong Kong, China	989	1,051	72	3	1,126	512	0.16%	13.85%
Japan	46,053	46,196	1,453	583	48,232	23,723	7.05%	4.73%
Mongolia	23	33	10	9	52	21	0.01%	126.09%
South Korea	63,939	80,569	3,091	402	84,062	39,558	12.30%	31.47%
Taiwan, China	18,538	25,652	1,949	12	27,613	12,798	4.04%	48.95%
Southern Asia	3,878	3,047	860	278	4,185	1,073	0.61%	7.92%
Afghanistan	90	80	7	9	96	31	0.01%	6.67%
Bangladesh	197	180	48	31	259	28	0.04%	31.47%
India	2,977	2,347	638	150	3,135	862	0.46%	5.31%
Nepal	208	164	52	20	236	67	0.03%	13.46%
Pakistan	230	146	49	30	225	28	0.03%	-2.17%
Srilanka	176	130	66	38	234	57	0.03%	32.95%
Oceania	26,836	28,197	1,514	623	30,334	13,638	4.44%	13.03%
Australia	23,449	24,933	1,292	525	26,750	12,166	3.91%	14.08%
New Zealand	3,387	3,264	222	98	3,584	1,472	0.52%	5.82%
Others Asia & the Pacific	1,730	1,062	62	53	1,177	714	0.17%	-31.97%
Europe	152,594	152,442	4,218	2,573	159,233	65,925	23.29%	4.35%
Northern Europe	54,489	48,138	1,428	706	50,272	19,074	7.35%	-7.74%
Denmark	4,251	3,065	68	54	3,187	1,271	0.47%	-25.03%
Finland	3,121	2,236	47	69	2,352	863	0.34%	-24.64%
Iceland	88	100	3	0	103	31	0.02%	17.05%
Ireland	2,361	2,112	57	44	2,213	774	0.32%	-6.27%
Norway	3,025	3,168	67	49	3,284	1,346	0.48%	8.56%
Sweden	7,102	5,966	138	60	6,164	2,393	0.90%	-13.21%
United Kingdom	34,541	31,491	1,048	430	32,969	12,396	4.82%	-4.55%
Western Europe	73,896	72,644	2,325	1,491	76,460	31,839	11.18%	3.47%
Austria	3,032	3,302	33	16	3,351	1,403	0.49%	10.52%
Belgium	3,641	3,993	130	128	4,251	1,642	0.62%	16.75%
France	32,492	30,756	1,444	823	33,023	14,307	4.83%	1.63%
Germany	22,633	22,799	357	318	23,474	9,501	3.43%	3.72%
Luxembourg	127	191	1	9	201	79	0.03%	58.27%
Netherlands	6,690	6,469	203	121	6,793	2,741	0.99%	1.54%
Switzerland	5,281	5,134	157	76	5,367	2,166	0.79%	1.63%
Eastern Europe	12,223	19,288	209	101	19,598	9,585	2.87%	60.34%
Bulgaria	98	204	2	0	206	111	0.03%	110.20%
Czech	984	1,327	5	3	1,335	485	0.20%	35.67%
Hungary	968	1,558	12	5	1,575	753	0.23%	62.71%
Poland	2,124	3,104	10	13	3,127	1,575	0.46%	47.22%
Romania	221	672	6	3	681	356	0.10%	208.14%
Russia	6,896	11,162	152	67	11,381	5,661	1.66%	65.04%
Slovakia	346	351	5	9	365	163	0.05%	5.49%
Ukraine	586	910	17	1	928	481	0.14%	58.36%
Southern Europe	10,407	11,478	215	233	11,926	4,773	1.74%	14.60%
Croatia	90	149	3	5	157	77	0.02%	74.44%
Greece	456	432	7	7	446	177	0.07%	-2.19%
Italy	5,932	6,655	104	94	6,853	2,700	1.00%	15.53%
Portugal	635	596	5	12	613	277	0.09%	-3.46%
Slovenia	232	294	2	4	300	144	0.04%	29.31%
Spain	2,420	2,760	69	85	2,914	1,217	0.43%	20.41%
Turkey	642	592	25	26	643	181	0.09%	0.16%
Others Europe	1,579	894	41	42	977	654	0.14%	-38.13%

Visitor Arrivals to Cambodia by Country of Residence from January - March in 2010

(by all means of transportation)

Regions Country of Residence	2009		2010			Total	Females	share	change
	Purpose of Visit			2010*	2010*/09				
	Tourists	Business	Others						
GRAND TOTAL	622,288	638,799	35,931	8,962	683,692	301,986	100.00%	9.87%	
Americas	65,456	56,904	2,417	1,786	61,107	26,785	8.94%	-6.64%	
Argentina	565	768	5	10	783	448	0.11%	38.58%	
Brazil	728	769	9	10	788	425	0.12%	8.24%	
Canada	13,218	12,869	515	223	13,607	5,858	1.99%	2.94%	
Chile	789	783	18	5	806	390	0.12%	2.15%	
Colombia	186	363	5	12	380	198	0.06%	104.30%	
Mexico	623	638	5	2	645	300	0.09%	3.53%	
Peru	87	109	3	10	122	59	0.02%	40.23%	
United States	47,824	40,081	1,829	1,482	43,392	18,750	6.35%	-9.27%	
Uruguay	66	31	0	0	31	22	0.00%	-53.03%	
Others Americas	1,370	493	28	32	553	335	0.08%	-59.64%	
Africa	1,370	1,077	119	42	1,238	410	0.18%	-9.64%	
Cameroon	263	126	10	2	138	19	0.02%	-47.53%	
Ghana	153	164	4	8	176	31	0.03%	15.03%	
Nigeria	283	131	50	6	187	9	0.03%	-33.92%	
Sudan	11	7	0	7	14	2	0.00%	27.27%	
South Africa	527	585	48	5	638	305	0.09%	21.06%	
Others Africa	133	64	7	14	85	44	0.01%	-36.09%	
Middle East	2,352	2,940	36	33	3,009	1,199	0.44%	27.93%	
Egypt	68	65	2	5	72	13	0.01%	5.88%	
Iran	77	112	0	2	114	24	0.02%	48.05%	
Israel	1,986	2,588	31	12	2,631	1,122	0.38%	32.48%	
Kuwait	116	123	0	5	128	10	0.02%	10.34%	
Palestine									
Saudi Arabia	14	6	0	1	7	0	0.00%	-50.00%	
United Arab Emirates									
Others Middle East	91	46	3	8	57	30	0.01%	-37.36%	
Same-day visitors	33,667	38,915			38,915	18,998	5.69%	15.59%	

Remark:

- Cambodian Overseas:	20,021
- Cambodian Residence:	90,147
- Cambodian outbound tourist departures:	106,095
- International outbound tourist departures:	641,578

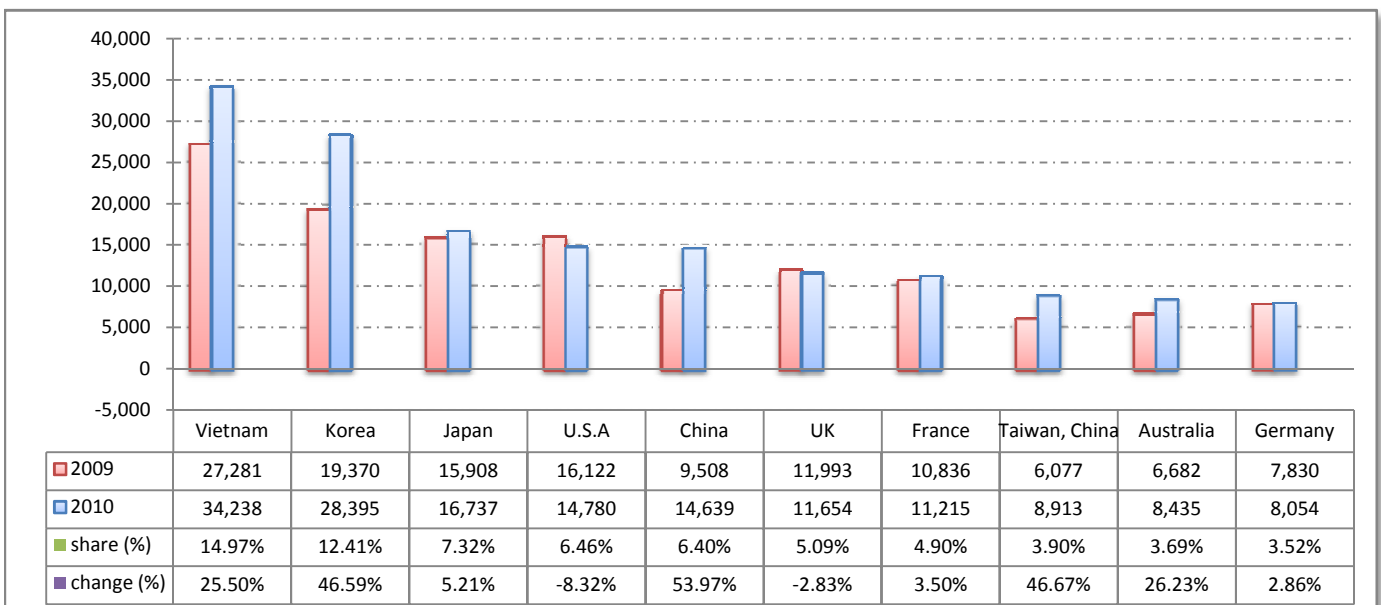
I. Visitor arrivals to Cambodia in March was:

228,748

II. Mode of arrivals

	visitors	share (%)
- Air	122,616	53.60
Phnom Penh Int'l Airport	52,528	22.96
Siem Reap Int'l Airport	70,088	30.64
- Land and Water ways	95,477	41.74
Land	82,928	36.25
Boat	12,549	5.49
- Same-day visitors	10,655	4.66
Total	228,748	100.00

III. Top ten markets arrivals to Cambodia in March 2010



IV. Visitor arrivals to Cambodia in March 2010

Visitor arrivals	2009		2010		share (%)		change (%)
	2009	2010	2009	2010	2009	2010	2010*/09
Air	104,853	122,616	51.70	53.60	16.94		
Phnom Penh Int'l Airport	44,619	52,528	22.00	22.96	17.73		
Siem Reap Int'l Airport	60,234	70,088	29.70	30.64	16.36		
Land and Water ways	87,911	95,477	43.35	41.74	8.61		
Land	73,476	82,928	36.23	36.25	12.86		
Boat	14,435	12,549	7.12	5.49	-13.07		
Sub-Total	192,764	218,093	95.05	95.34	13.14		
Same-day visitors	10,044	10,655	4.95	4.66	6.08		
Total	202,808	228,748	100.00	100.00	12.79		

V. Remark: Percentage share of visitor arrivals at destinations in March 2010

Visitor arrivals	2009		2010		share (%)		change (%)
	2009	2010	2009	2010	2009	2010	2010*/09
Phnom Penh & Other Destinations	104,586	110,866	51.57%	48.47%	6.00%		
Siem Reap Province	98,222	117,882	48.43%	51.53%	20.02%		
Total	202,808	228,748	100.00%	100.00%	12.79%		

VI. Outbound tourist departures in March 2010

Outbound tourists	2009	2010	change (%)
Cambodian outbound tourist departure:	21,558	35,666	65.44%
International outbound tourists departure:	188,323	213,645	13.45%

Visitor Arrivals to Cambodia by Country of Residence in March 2010

(by all means of transportation)

Regions Country of Residence	2009	2010			Total	Females	share	change
		Purpose of Visit					(%)	(%)
		Tourists	Business	Others			2010*	2010*/09
GRAND TOTAL	202,808	213,735	12,139	2,874	228,748	101,148	100.00%	12.79%
Asia and the Pacific	121,833	132,959	10,025	1,550	144,534	64,340	63.18%	18.63%
ASEAN	61,252	60,336	3,051	845	64,232	27,674	28.08%	4.87%
Brunei Darussalam	19	46	1	11	58	33	0.03%	205.26%
Indonesia	657	726	216	33	975	424	0.43%	48.40%
Lao PDR	9,509	6,583	14	144	6,741	4,492	2.95%	-29.11%
Malaysia	6,681	6,577	374	19	6,970	2,481	3.05%	4.33%
Myanmar	209	187	48	12	247	86	0.11%	18.18%
Philippines	4,444	3,818	371	58	4,247	2,672	1.86%	-4.43%
Singapore	3,552	3,675	88	15	3,778	1,381	1.65%	6.36%
Thailand	8,900	5,673	1,146	159	6,978	2,303	3.05%	-21.60%
Vietnam	27,281	33,051	793	394	34,238	13,802	14.97%	25.50%
Eastern Asia	51,165	62,419	6,256	433	69,108	31,774	30.21%	35.07%
China	9,508	10,481	4,094	123	14,698	6,012	6.43%	54.59%
Hong Kong, China	298	318	34	0	352	152	0.15%	18.12%
Japan	15,908	16,071	484	182	16,737	8,266	7.32%	5.21%
Mongolia	4	10	2	1	13	3	0.01%	225.00%
South Korea	19,370	27,270	1,004	121	28,395	13,319	12.41%	46.59%
Taiwan, China	6,077	8,269	638	6	8,913	4,022	3.90%	46.67%
Southern Asia	1,380	931	274	79	1,284	339	0.56%	-6.96%
Afghanistan	79	61	3	1	65	27	0.03%	-17.72%
Bangladesh	72	52	17	5	74	3	0.03%	2.78%
India	1,009	661	192	49	902	250	0.39%	-10.60%
Nepal	72	68	16	3	87	32	0.04%	20.83%
Pakistan	75	46	16	6	68	10	0.03%	-9.33%
Srilanka	73	43	30	15	88	17	0.04%	20.55%
Oceania	7,639	8,928	434	177	9,539	4,304	4.17%	24.87%
Australia	6,682	7,912	366	157	8,435	3,853	3.69%	26.23%
New Zealand	957	1,016	68	20	1,104	451	0.48%	15.36%
Others Asia & the Pacific	397	345	10	16	371	249	0.16%	-6.55%
Europe	48,027	49,774	1,295	768	51,837	22,259	22.66%	7.93%
Northern Europe	16,873	16,128	428	242	16,798	6,656	7.34%	-0.44%
Denmark	972	842	13	15	870	340	0.38%	-10.49%
Finland	672	637	11	32	680	231	0.30%	1.19%
Iceland	28	34	0	0	34	12	0.01%	21.43%
Ireland	757	684	12	15	711	253	0.31%	-6.08%
Norway	759	1,033	15	16	1,064	445	0.47%	40.18%
Sweden	1,692	1,731	39	15	1,785	711	0.78%	5.50%
United Kingdom	11,993	11,167	338	149	11,654	4,664	5.09%	-2.83%
Western Europe	24,249	24,343	710	428	25,481	11,003	11.14%	5.08%
Austria	903	933	12	5	950	425	0.42%	5.20%
Belgium	1,198	1,667	40	32	1,739	667	0.76%	45.16%
France	10,836	10,525	440	250	11,215	4,958	4.90%	3.50%
Germany	7,830	7,825	134	95	8,054	3,495	3.52%	2.86%
Luxembourg	49	67	0	0	67	23	0.03%	36.73%
Netherlands	1,976	1,885	56	25	1,966	816	0.86%	-0.51%
Switzerland	1,457	1,441	28	21	1,490	619	0.65%	2.26%
Eastern Europe	3,547	5,821	86	16	5,923	2,929	2.59%	66.99%
Bulgaria	40	39	1	0	40	27	0.02%	0.00%
Czech	287	401	2	2	405	121	0.18%	41.11%
Hungary	242	367	2	1	370	192	0.16%	52.89%
Poland	534	982	2	4	988	484	0.43%	85.02%
Romania	73	152	2	1	155	95	0.07%	112.33%
Russia	2,085	3,502	68	5	3,575	1,808	1.56%	71.46%
Slovakia	130	132	1	3	136	69	0.06%	4.62%
Ukraine	156	246	8	0	254	133	0.11%	62.82%
Southern Europe	3,017	3,247	63	69	3,379	1,436	1.48%	12.00%
Croatia	26	33	0	0	33	18	0.01%	26.92%
Greece	90	158	2	1	161	79	0.07%	78.89%
Italy	1,624	1,591	30	30	1,651	694	0.72%	1.66%
Portugal	351	261	2	2	265	133	0.12%	-24.50%
Slovenia	61	52	0	0	52	23	0.02%	-14.75%
Spain	683	997	24	29	1,050	462	0.46%	53.73%
Turkey	182	155	5	7	167	27	0.07%	-8.24%
Others Europe	341	235	8	13	256	235	0.11%	-24.93%

Visitor Arrivals to Cambodia by Country of Residence in March 2010

(by all means of transportation)

Regions Country of Residence	2009	2010			Total	Females	share	change
		Purpose of Visit					(%)	(%)
		Tourists	Business	Others			2010*	2010*/09
GRAND TOTAL	202,808	213,735	12,139	2,874	228,748	101,148	100.00%	12.79%
Americas	21,629	19,197	780	530	20,507	9,036	8.96%	-5.19%
Argentina	219	226	0	4	230	116	0.10%	5.02%
Brazil	219	146	3	3	152	86	0.07%	-30.59%
Canada	4,348	4,443	133	74	4,650	2,086	2.03%	6.95%
Chile	212	144	17	0	161	55	0.07%	-24.06%
Colombia	60	69	2	2	73	37	0.03%	21.67%
Mexico	224	251	2	0	253	122	0.11%	12.95%
Peru	28	38	0	3	41	17	0.02%	46.43%
United States	16,122	13,728	618	434	14,780	6,427	6.46%	-8.32%
Uruguay	10	9	0	0	9	8	0.00%	-10.00%
Others Americas	187	143	5	10	158	82	0.07%	-15.51%
Africa	549	330	28	18	376	140	0.16%	-31.51%
Cameroon	100	33	0	1	34	2	0.01%	-66.00%
Ghana	48	35	0	2	37	2	0.02%	-22.92%
Nigeria	114	44	11	3	58	2	0.03%	-49.12%
Sudan	3	2	0	4	6	0	0.00%	100.00%
South Africa	198	197	14	2	213	118	0.09%	7.58%
Others Africa	86	19	3	6	28	16	0.01%	-67.44%
Middle East	726	820	11	8	839	345	0.37%	15.56%
Egypt	20	15	0	1	16	3	0.01%	-20.00%
Iran	18	34	0	1	35	5	0.02%	94.44%
Israel	590	733	10	2	745	323	0.33%	26.27%
Kuwait	35	20	0	0	20	2	0.01%	-42.86%
Palestine								
Saudi Arabia	7	3	0	1	4	0	0.00%	-42.86%
United Arab Emirates								
Others Middle East	56	15	1	3	19	12	0.01%	-66.07%
Same-day visitors	10,044	10,655	0	0	10,655	5,028	4.66%	6.08%

Remark:

- Cambodian Overseas:	6,944
- Cambodian Residence:	31,843
- Cambodian outbound tourist departures:	35,666
- International outbound tourist departures:	213,645

COMPILED BY:

1. Mr. Kong Sopheareak

Director
Statistics & Tourism Information Department
Fax: +855 23 885003
E-mail: kong@mot.gov.kh

2. Mr. Horth Vanny

Chief of Tourism Statistics Office
Compile and data analysis
Tel.: +855 12 827664