



KINGDOM OF CAMBODIA  
NATION RELIGION KING



# TOURISM STATISTICS REPORT

# September 2010

**MINISTRY OF TOURISM**

Statistics and Tourism Information Department

No. A3, Street 169, Sangkat Veal Vong, Khan 7 Makara, Phnom Penh, Cambodia.

Fax: +855 23 885003

E-mail: [kong@mot.gov.kh](mailto:kong@mot.gov.kh)

Web site: [www.mot.gov.kh](http://www.mot.gov.kh)

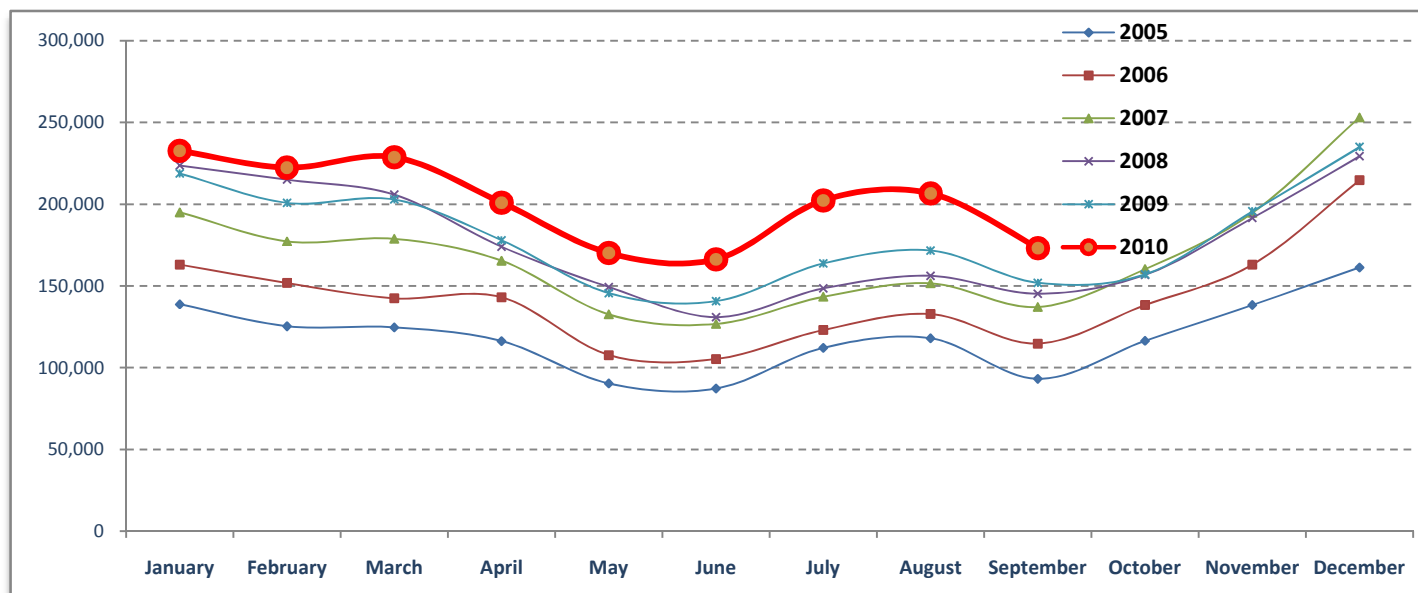
## Tourism Highlights

### Visitor Arrivals, Average Length of Stay, Hotels Occupancy and Tourism Receipts 1993 - 2009

Years	Visitor Arrivals		Average Length	Hotels Occupancy	Tourism Receipts
	number	change (%)	of Stay (days)	(%)	(million US\$)
1993	118,183	0.00	N/A	N/A	N/A
1994	176,617	49.44%	N/A	N/A	N/A
1995	219,680	24.38%	8.00	37.00	100
1996	260,489	18.58%	7.50	40.00	118
1997	218,843	-15.99%	6.40	30.00	103
1998	289,524	32.30%	5.20	40.00	166
1999	367,743	27.02%	5.50	44.00	190
2000	466,365	26.82%	5.50	45.00	228
2001	604,919	29.71%	5.50	48.00	304
2002	786,524	30.02%	5.80	50.00	379
2003	701,014	-10.87%	5.50	50.00	347
2004	1,055,202	50.53%	6.30	52.00	578
2005	1,421,615	34.72%	6.30	52.00	832
2006	1,700,041	19.59%	6.50	54.79	1,049
2007	2,015,128	18.53%	6.50	54.79	1,400
2008	2,125,465	5.48%	6.65	62.68	1,595
2009	2,161,577	1.70%	6.45	63.57	1,561

### International visitor arrivals to Cambodia

Destination	Months	2005	2006	2007	2008	2009	2010	change(%) 2010*/09
<b>Cambodia</b>	<b>Q1</b>	<b>388,670</b>	<b>457,305</b>	<b>550,813</b>	<b>644,205</b>	<b>622,288</b>	<b>683,692</b>	<b>9.87%</b>
<i>International visitor arrivals by all means of transportation, include same-day visitors</i>	January	138,718	163,047	194,932	223,581	218,691	232,590	6.36%
	February	125,326	151,821	177,130	214,902	200,789	222,354	10.74%
	March	124,626	142,437	178,751	205,722	202,808	228,748	12.79%
	<b>Q2</b>	<b>293,761</b>	<b>356,087</b>	<b>424,536</b>	<b>454,031</b>	<b>464,230</b>	<b>537,464</b>	<b>15.78%</b>
	April	116,219	143,069	165,347	173,903	177,955	200,965	12.93%
	May	90,314	107,720	132,512	149,275	145,564	170,164	16.90%
	June	87,228	105,298	126,677	130,853	140,711	166,335	18.21%
	<b>Q3</b>	<b>323,217</b>	<b>370,620</b>	<b>431,815</b>	<b>449,693</b>	<b>487,422</b>	<b>582,024</b>	<b>19.41%</b>
	July	112,116	123,047	143,310	148,449	163,817	202,349	23.52%
	August	117,943	132,792	151,478	156,098	171,668	206,563	20.33%
	September	93,158	114,781	137,027	145,146	151,937	173,112	13.94%
	<b>Q4</b>	<b>415,967</b>	<b>516,029</b>	<b>607,964</b>	<b>577,536</b>	<b>587,637</b>	<b>0</b>	
	October	116,382	138,296	160,235	156,718	157,105		
	November	138,293	163,068	194,646	191,549	195,570		
	December	161,292	214,665	253,083	229,269	234,962		
	<b>Total</b>	<b>1,421,615</b>	<b>1,700,041</b>	<b>2,015,128</b>	<b>2,125,465</b>	<b>2,161,577</b>	<b>1,803,180</b>	<b>14.56%</b>



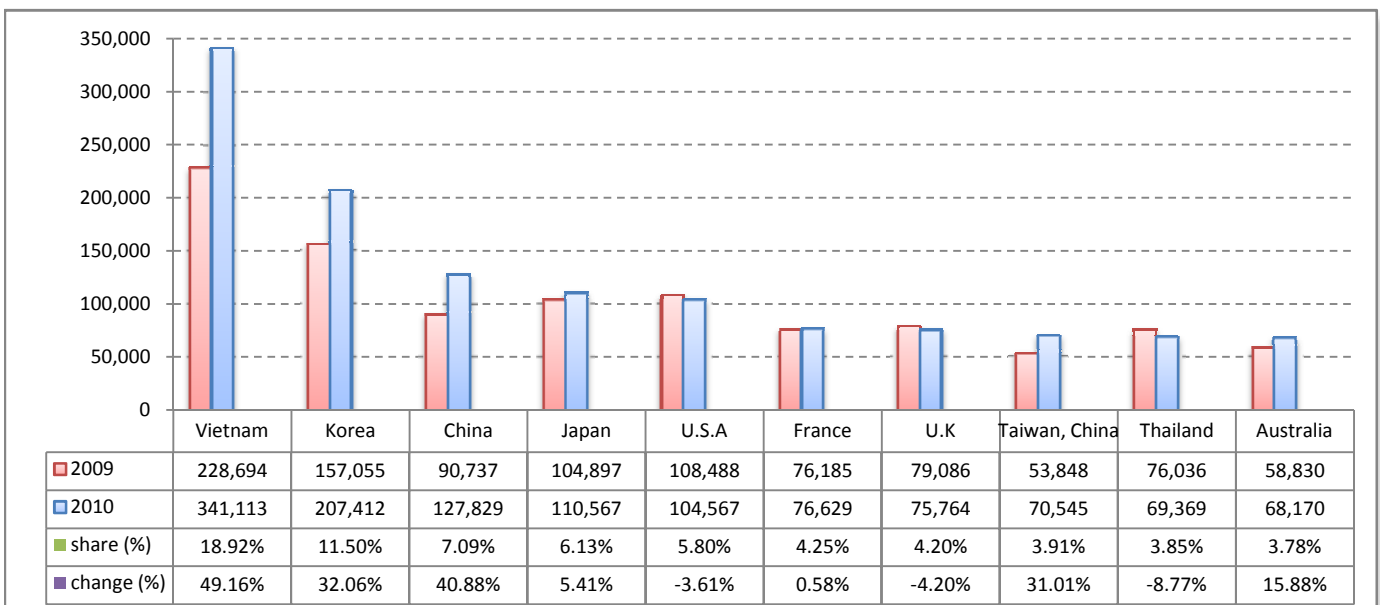
## Executive Summary Report in the First Nine Months 2010

I. Visitor arrivals to Cambodia from January - September was: **1,803,180**

### II. Mode of arrivals

	visitors	share (%)
<b>- Air</b>	<b>920,627</b>	<b>51.06</b>
Phnom Penh Int'l Airport	421,930	23.40
Siem Reap Int'l Airport	498,697	27.66
<b>- Land and Water ways</b>	<b>794,416</b>	<b>44.06</b>
Land	737,436	40.90
Boat	56,980	3.16
- Same-day visitors	88,137	4.89
<b>Total</b>	<b>1,803,180</b>	<b>100.00</b>

### III. Top ten markets arrivals to Cambodia from January - September in 2010



### IV. Visitor arrivals to Cambodia from January - September in 2010

Visitor arrivals			share (%)		change (%)
	2009	2010	2009	2010	2010*/09
<b>Air</b>	<b>803,607</b>	<b>920,627</b>	<b>51.06</b>	<b>51.06</b>	<b>14.56</b>
Phnom Penh Int'l Airport	379,718	421,930	24.13	23.40	11.12
Siem Reap Int'l Airport	423,889	498,697	26.93	27.66	17.65
<b>Land and Water ways</b>	<b>692,470</b>	<b>794,416</b>	<b>44.00</b>	<b>44.06</b>	<b>14.72</b>
Land	634,842	737,436	40.33	40.90	16.16
Boat	57,628	56,980	3.66	3.16	-1.12
<b>Sub-Total</b>	<b>1,496,077</b>	<b>1,715,043</b>	<b>95.05</b>	<b>95.11</b>	<b>14.64</b>
Same-day visitors	77,863	88,137	4.95	4.89	13.19
<b>Total</b>	<b>1,573,940</b>	<b>1,803,180</b>	<b>100.00</b>	<b>100.00</b>	<b>14.56</b>

### V. Remark: Percentage share of visitor arrivals at destinations from January - September in 2010

Visitor arrivals			share (%)		change (%)
	2009	2010	2009	2010	2010*/09
Phnom Penh & Other Destinations	852,710	875,007	54.18%	48.53%	2.61%
Siem Reap Province	721,230	928,173	45.82%	51.47%	28.69%
<b>Total</b>	<b>1,573,940</b>	<b>1,803,180</b>	<b>100.00%</b>	<b>100.00%</b>	<b>14.56%</b>

### VI. Outbound tourist departures from January - September in 2010

Outbound tourists	2009	2010	change (%)
Cambodian outbound tourist departure	237,188	367,295	54.85%
International outbound tourists departure	1,445,235	1,705,608	18.02%

## Visitor Arrivals to Cambodia by Country of Residence from January - September in 2010

(by all means of transportation)

Regions Country of Residence	2009	2010			Total	Females	share (%) 2010*	change (%) 2010*/09
		Purpose of Visit						
		Tourists	Business	Others				
<b>GRAND TOTAL</b>	<b>1,573,940</b>	<b>1,671,970</b>	<b>104,075</b>	<b>27,135</b>	<b>1,803,180</b>	<b>785,858</b>	<b>100.00%</b>	<b>14.56%</b>
<b>Asia and the Pacific</b>	<b>1,007,347</b>	<b>1,128,709</b>	<b>84,371</b>	<b>14,313</b>	<b>1,227,393</b>	<b>543,196</b>	<b>68.07%</b>	<b>21.84%</b>
<b>ASEAN</b>	<b>508,353</b>	<b>576,533</b>	<b>29,646</b>	<b>6,959</b>	<b>613,138</b>	<b>267,173</b>	<b>34.00%</b>	<b>20.61%</b>
Brunei Darussalam	270	182	6	178	366	138	0.02%	35.56%
Indonesia	6,465	6,309	2,363	412	9,084	3,548	0.50%	40.51%
Lao PDR	77,928	57,555	137	434	58,126	40,801	3.22%	-25.41%
Malaysia	53,645	56,460	4,108	262	60,830	20,893	3.37%	13.39%
Myanmar	1,719	1,454	376	95	1,925	752	0.11%	11.98%
Philippines	36,608	36,363	3,903	972	41,238	24,859	2.29%	12.65%
Singapore	26,988	29,687	1,246	154	31,087	11,150	1.72%	15.19%
Thailand	76,036	56,766	10,701	1,902	69,369	23,205	3.85%	-8.77%
Vietnam	228,694	331,757	6,806	2,550	341,113	141,827	18.92%	49.16%
<b>Eastern Asia</b>	<b>409,220</b>	<b>467,729</b>	<b>47,747</b>	<b>4,319</b>	<b>519,795</b>	<b>236,939</b>	<b>28.83%</b>	<b>27.02%</b>
China	90,737	99,236	27,660	933	127,829	55,684	7.09%	40.88%
Hong Kong, China	2,539	2,945	266	11	3,222	1,421	0.18%	26.90%
Japan	104,897	104,691	3,953	1,923	110,567	52,518	6.13%	5.41%
Mongolia	144	176	14	30	220	95	0.01%	52.78%
South Korea	157,055	196,238	9,797	1,377	207,412	95,257	11.50%	32.06%
Taiwan, China	53,848	64,443	6,057	45	70,545	31,964	3.91%	31.01%
<b>Southern Asia</b>	<b>11,396</b>	<b>10,016</b>	<b>2,464</b>	<b>906</b>	<b>13,386</b>	<b>3,239</b>	<b>0.74%</b>	<b>17.46%</b>
Afghanistan	105	128	8	23	159	41	0.01%	51.43%
Bangladesh	651	1,026	153	117	1,296	120	0.07%	99.08%
India	8,916	7,401	1,754	491	9,646	2,584	0.53%	8.19%
Nepal	622	499	151	79	729	184	0.04%	17.20%
Pakistan	604	473	187	100	760	118	0.04%	25.83%
Srilanka	498	489	211	96	796	192	0.04%	59.84%
<b>Oceania</b>	<b>68,528</b>	<b>71,862</b>	<b>4,271</b>	<b>1,861</b>	<b>77,994</b>	<b>34,268</b>	<b>4.33%</b>	<b>13.81%</b>
Australia	58,830	62,930	3,655	1,585	68,170	30,239	3.78%	15.88%
New Zealand	9,698	8,932	616	276	9,824	4,029	0.54%	1.30%
Others Asia & the Pacific	9,850	2,569	243	268	3,080	1,577	0.17%	-68.73%
<b>Europe</b>	<b>333,177</b>	<b>316,055</b>	<b>12,271</b>	<b>7,293</b>	<b>335,619</b>	<b>136,574</b>	<b>18.61%</b>	<b>0.73%</b>
<b>Northern Europe</b>	<b>113,510</b>	<b>101,280</b>	<b>4,114</b>	<b>1,951</b>	<b>107,345</b>	<b>40,178</b>	<b>5.95%</b>	<b>-5.43%</b>
Denmark	7,095	5,606	179	136	5,921	2,352	0.33%	-16.55%
Finland	4,703	3,532	120	151	3,803	1,315	0.21%	-19.14%
Iceland	144	175	10	3	188	53	0.01%	30.56%
Ireland	6,739	5,944	191	132	6,267	2,503	0.35%	-7.00%
Norway	5,265	5,471	165	125	5,761	2,215	0.32%	9.42%
Sweden	10,478	9,120	326	195	9,641	3,591	0.53%	-7.99%
United Kingdom	79,086	71,432	3,123	1,209	75,764	28,149	4.20%	-4.20%
<b>Western Europe</b>	<b>159,612</b>	<b>149,276</b>	<b>6,702</b>	<b>4,234</b>	<b>160,212</b>	<b>65,055</b>	<b>8.88%</b>	<b>0.38%</b>
Austria	5,081	5,572	117	64	5,753	2,361	0.32%	13.23%
Belgium	8,688	9,087	408	310	9,805	3,836	0.54%	12.86%
France	76,185	69,918	4,301	2,410	76,629	31,825	4.25%	0.58%
Germany	41,618	39,082	971	916	40,969	16,128	2.27%	-1.56%
Luxembourg	312	419	8	19	446	177	0.02%	42.95%
Netherlands	15,918	15,675	521	326	16,522	6,731	0.92%	3.79%
Switzerland	11,810	9,523	376	189	10,088	3,997	0.56%	-14.58%
<b>Eastern Europe</b>	<b>21,931</b>	<b>32,264</b>	<b>602</b>	<b>314</b>	<b>33,180</b>	<b>16,399</b>	<b>1.84%</b>	<b>51.29%</b>
Bulgaria	247	314	13	5	332	163	0.02%	34.41%
Czech	1,722	1,938	8	27	1,973	761	0.11%	14.58%
Hungary	1,596	1,987	28	13	2,028	945	0.11%	27.07%
Poland	3,605	5,027	24	28	5,079	2,541	0.28%	40.89%
Romania	464	889	8	11	908	479	0.05%	95.69%
Russia	12,405	19,701	456	186	20,343	10,233	1.13%	63.99%
Slovakia	631	687	13	34	734	336	0.04%	16.32%
Ukraine	1,261	1,721	52	10	1,783	941	0.10%	41.40%
<b>Southern Europe</b>	<b>29,134</b>	<b>31,038</b>	<b>670</b>	<b>611</b>	<b>32,319</b>	<b>13,541</b>	<b>1.79%</b>	<b>10.93%</b>
Croatia	197	266	13	23	302	133	0.02%	53.30%
Greece	1,029	1,048	15	18	1,081	431	0.06%	5.05%
Italy	12,604	13,222	280	255	13,757	5,217	0.76%	9.15%
Portugal	1,834	1,627	16	22	1,665	757	0.09%	-9.21%
Slovenia	480	455	5	8	468	207	0.03%	-2.50%
Spain	11,810	13,211	192	228	13,631	6,416	0.76%	15.42%
Turkey	1,180	1,209	149	57	1,415	380	0.08%	19.92%
Others Europe	8,990	2,197	183	183	2,563	1,401	0.14%	-71.49%

Source: Statistics and Tourism Information Department, MOT

## Visitor Arrivals to Cambodia by Country of Residence from January - September in 2010

(by all means of transportation)

Regions Country of Residence	2009	2010			Total	Females	share	change
		Purpose of Visit					2010*	2010*/09
		Tourists	Business	Others				
<b>GRAND TOTAL</b>	<b>1,573,940</b>	<b>1,671,970</b>	<b>104,075</b>	<b>27,135</b>	<b>1,803,180</b>	<b>785,858</b>	<b>100.00%</b>	<b>14.56%</b>
<b>Americas</b>	<b>146,628</b>	<b>130,371</b>	<b>6,919</b>	<b>5,290</b>	<b>142,580</b>	<b>59,993</b>	<b>7.91%</b>	<b>-2.76%</b>
Argentina	1,229	1,598	21	24	1,643	843	0.09%	33.69%
Brazil	1,525	1,641	22	37	1,700	824	0.09%	11.48%
Canada	26,172	25,684	1,277	550	27,511	11,894	1.53%	5.12%
Chile	1,536	1,722	28	12	1,762	872	0.10%	14.71%
Colombia	656	718	13	27	758	381	0.04%	15.55%
Mexico	1,740	2,202	28	16	2,246	1,085	0.12%	29.08%
Peru	283	281	12	19	312	141	0.02%	10.25%
United States	108,488	94,761	5,381	4,425	104,567	42,880	5.80%	-3.61%
Uruguay	283	281	0	0	281	159	0.02%	-0.71%
Others Americas	4,716	1,483	137	180	1,800	914	0.10%	-61.83%
<b>Africa</b>	<b>3,933</b>	<b>2,937</b>	<b>369</b>	<b>151</b>	<b>3,457</b>	<b>1,107</b>	<b>0.19%</b>	<b>-12.10%</b>
Cameroon	857	361	18	12	391	77	0.02%	-54.38%
Ghana	498	367	9	14	390	46	0.02%	-21.69%
Nigeria	850	402	175	19	596	41	0.03%	-29.88%
Sudan	20	20	2	7	29	3	0.00%	45.00%
South Africa	1,380	1,583	140	34	1,757	799	0.10%	27.32%
Others Africa	328	204	25	65	294	141	0.02%	-10.37%
<b>Middle East</b>	<b>4,992</b>	<b>5,761</b>	<b>145</b>	<b>88</b>	<b>5,994</b>	<b>2,120</b>	<b>0.33%</b>	<b>20.07%</b>
Egypt	130	142	12	11	165	27	0.01%	26.92%
Iran	253	381	2	14	397	81	0.02%	56.92%
Israel	3,863	4,635	116	21	4,772	1,885	0.26%	23.53%
Kuwait	524	406	1	5	412	31	0.02%	-21.37%
Palestine								
Saudi Arabia	35	50	2	2	54	6	0.00%	54.29%
United Arab Emirates								
Others Middle East	187	147	12	35	194	90	0.01%	3.74%
Same-day visitors	77,863	88,137	0	0	88,137	42,868	4.89%	13.19%

### Remark:

- Cambodian Overseas:	62,906
- Cambodian Residence:	305,443
- Cambodian outbound tourist departures:	367,295
- International outbound tourist departures:	1,705,608

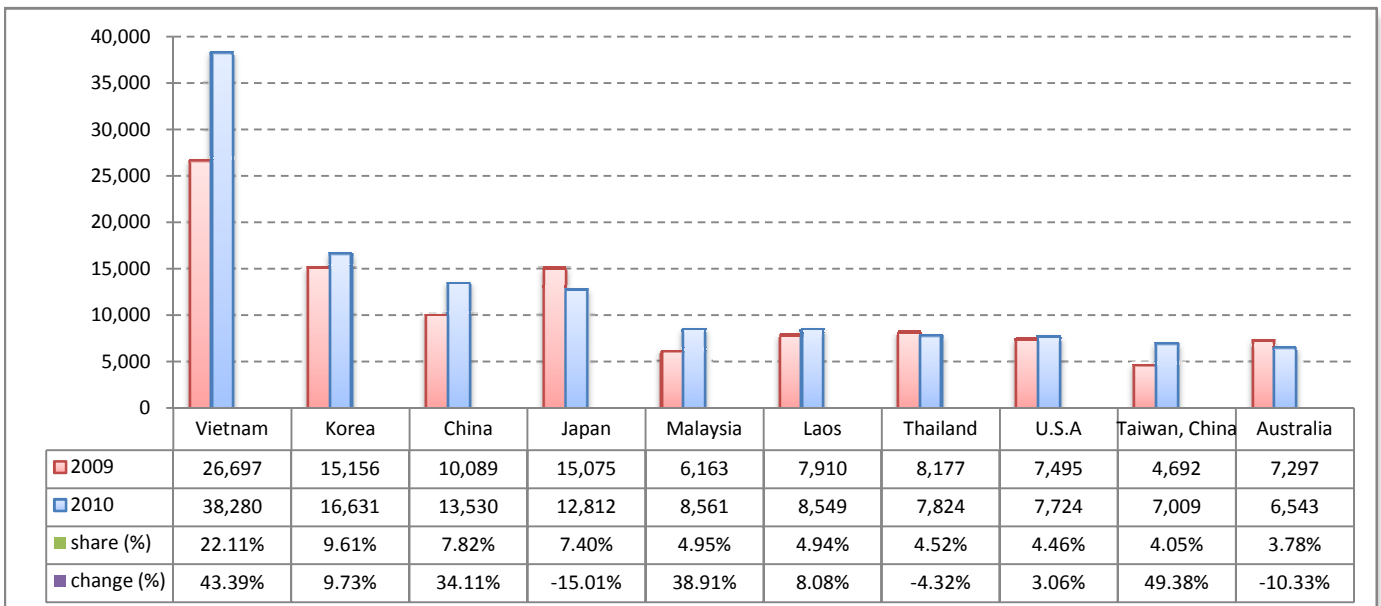
I. Visitor arrivals to Cambodia in September was:

173,112

II. Mode of arrivals

	visitors	share (%)
<b>- Air</b>	<b>85,911</b>	<b>49.63</b>
Phnom Penh Int'l Airport	40,723	23.52
Siem Reap Int'l Airport	45,188	26.10
<b>- Land and Water ways</b>	<b>79,841</b>	<b>46.12</b>
Land	76,036	43.92
Boat	3,805	2.20
- Same-day visitors	7,360	4.25
<b>Total</b>	<b>173,112</b>	<b>100.00</b>

III. Top ten markets arrivals to Cambodia in September 2010



IV. Visitor arrivals to Cambodia in September 2010

Visitor arrivals	2009		2010		share (%)		change (%)
	2009	2010	2009	2010	2009	2010	2010*/09
<b>Air</b>	<b>72,671</b>	<b>85,911</b>	<b>47.83</b>	<b>49.63</b>	<b>18.22</b>		
Phnom Penh Int'l Airport	37,192	40,723	24.48	23.52	9.49		
Siem Reap Int'l Airport	35,479	45,188	23.35	26.10	27.37		
<b>Land and Water ways</b>	<b>75,541</b>	<b>79,841</b>	<b>49.72</b>	<b>46.12</b>	<b>5.69</b>		
Land	71,975	76,036	47.37	43.92	5.64		
Boat	3,566	3,805	2.35	2.20	6.70		
<b>Sub-Total</b>	<b>148,212</b>	<b>165,752</b>	<b>97.55</b>	<b>95.75</b>	<b>11.83</b>		
Same-day visitors	3,725	7,360	2.45	4.25	97.58		
<b>Total</b>	<b>151,937</b>	<b>173,112</b>	<b>100.00</b>	<b>100.00</b>	<b>13.94</b>		

V. Remark: Percentage share of visitor arrivals at destinations in September 2010

Visitor arrivals	2009		2010		share (%)		change (%)
	2009	2010	2009	2010	2009	2010	2010*/09
Phnom Penh & Other Destinations	85,237	87,812	56.10%	50.73%	3.02%		
Siem Reap Province	66,700	85,300	43.90%	49.27%	27.89%		
<b>Total</b>	<b>151,937</b>	<b>173,112</b>	<b>100.00%</b>	<b>100.00%</b>	<b>13.94%</b>		

VI. Outbound tourist departures in September 2010

Outbound tourists	2009	2010	change (%)
Cambodian outbound tourist departure	34,452	45,822	33.00%
International outbound tourists departure	130,337	159,720	22.54%

## Visitor Arrivals to Cambodia by Country of Residence in September 2010

(by all means of transportation)

Regions Country of Residence	2009	2010				Total	Females	share	change	
		Purpose of Visit			Total			Females	(%)	(%)
		Tourists	Business	Others					2010*	2010*/09
<b>GRAND TOTAL</b>	<b>151,937</b>	<b>160,603</b>	<b>10,281</b>	<b>2,228</b>	<b>173,112</b>	<b>74,935</b>	<b>100.00%</b>	<b>13.94%</b>		
<b>Asia and the Pacific</b>	<b>113,582</b>	<b>122,950</b>	<b>8,329</b>	<b>1,260</b>	<b>132,539</b>	<b>59,121</b>	<b>76.56%</b>	<b>16.69%</b>		
<b>ASEAN</b>	<b>57,065</b>	<b>69,130</b>	<b>2,902</b>	<b>622</b>	<b>72,654</b>	<b>32,166</b>	<b>41.97%</b>	<b>27.32%</b>		
Brunei Darussalam	33	11	1	15	27	10	0.02%	-18.18%		
Indonesia	866	1,114	266	30	1,410	568	0.81%	62.82%		
Lao PDR	7,910	8,499	16	34	8,549	5,945	4.94%	8.08%		
Malaysia	6,163	8,081	456	24	8,561	3,193	4.95%	38.91%		
Myanmar	181	242	40	14	296	129	0.17%	63.54%		
Philippines	3,931	3,970	309	98	4,377	2,596	2.53%	11.35%		
Singapore	3,107	3,199	123	8	3,330	1,152	1.92%	7.18%		
Thailand	8,177	6,471	1,144	209	7,824	2,532	4.52%	-4.32%		
Vietnam	26,697	37,543	547	190	38,280	16,041	22.11%	43.39%		
<b>Eastern Asia</b>	<b>45,407</b>	<b>45,220</b>	<b>4,692</b>	<b>398</b>	<b>50,310</b>	<b>23,030</b>	<b>29.06%</b>	<b>10.80%</b>		
China	10,089	10,640	2,773	117	13,530	5,951	7.82%	34.11%		
Hong Kong, China	380	300	16	0	316	147	0.18%	-16.84%		
Japan	15,075	12,247	386	179	12,812	6,259	7.40%	-15.01%		
Mongolia	15	10	1	1	12	7	0.01%	-20.00%		
South Korea	15,156	15,689	843	99	16,631	7,340	9.61%	9.73%		
Taiwan, China	4,692	6,334	673	2	7,009	3,326	4.05%	49.38%		
<b>Southern Asia</b>	<b>1,256</b>	<b>1,221</b>	<b>245</b>	<b>75</b>	<b>1,541</b>	<b>356</b>	<b>0.89%</b>	<b>22.69%</b>		
Afghanistan	4	2	0	2	4	3	0.00%	0.00%		
Bangladesh	79	134	18	9	161	17	0.09%	103.80%		
India	1,014	901	169	42	1,112	285	0.64%	9.66%		
Nepal	61	43	14	6	63	15	0.04%	3.28%		
Pakistan	60	53	26	11	90	14	0.05%	50.00%		
Srilanka	38	88	18	5	111	22	0.06%	192.11%		
<b>Oceania</b>	<b>8,466</b>	<b>7,067</b>	<b>479</b>	<b>151</b>	<b>7,697</b>	<b>3,371</b>	<b>4.45%</b>	<b>-9.08%</b>		
Australia	7,297	6,010	401	132	6,543	2,896	3.78%	-10.33%		
New Zealand	1,169	1,057	78	19	1,154	475	0.67%	-1.28%		
Others Asia & the Pacific	1,388	312	11	14	337	198	0.19%	-75.72%		
<b>Europe</b>	<b>23,804</b>	<b>20,053</b>	<b>1,237</b>	<b>555</b>	<b>21,845</b>	<b>8,169</b>	<b>12.62%</b>	<b>-8.23%</b>		
<b>Northern Europe</b>	<b>8,031</b>	<b>6,779</b>	<b>421</b>	<b>162</b>	<b>7,362</b>	<b>2,483</b>	<b>4.25%</b>	<b>-8.33%</b>		
Denmark	304	263	16	9	288	140	0.17%	-5.26%		
Finland	209	188	12	8	208	57	0.12%	-0.48%		
Iceland	4	16	0	0	16	6	0.01%	300.00%		
Ireland	537	501	21	11	533	212	0.31%	-0.74%		
Norway	285	287	20	9	316	85	0.18%	10.88%		
Sweden	471	319	33	14	366	102	0.21%	-22.29%		
United Kingdom	6,221	5,205	319	111	5,635	1,881	3.26%	-9.42%		
<b>Western Europe</b>	<b>10,551</b>	<b>8,369</b>	<b>684</b>	<b>314</b>	<b>9,367</b>	<b>3,309</b>	<b>5.41%</b>	<b>-11.22%</b>		
Austria	229	270	6	5	281	115	0.16%	22.71%		
Belgium	643	549	42	29	620	215	0.36%	-3.58%		
France	4,687	3,461	451	170	4,082	1,386	2.36%	-12.91%		
Germany	3,111	2,640	85	61	2,786	1,003	1.61%	-10.45%		
Luxembourg	21	15	0	0	15	5	0.01%	-28.57%		
Netherlands	1,086	949	59	30	1,038	394	0.60%	-4.42%		
Switzerland	774	485	41	19	545	191	0.31%	-29.59%		
<b>Eastern Europe</b>	<b>1,692</b>	<b>2,068</b>	<b>65</b>	<b>25</b>	<b>2,158</b>	<b>1,039</b>	<b>1.25%</b>	<b>27.54%</b>		
Bulgaria	47	19	8	1	28	10	0.02%	-40.43%		
Czech	148	104	0	0	104	45	0.06%	-29.73%		
Hungary	58	35	2	4	41	19	0.02%	-29.31%		
Poland	306	309	0	3	312	153	0.18%	1.96%		
Romania	82	33	1	2	36	17	0.02%	-56.10%		
Russia	813	1,385	51	8	1,444	708	0.83%	77.61%		
Slovakia	35	56	2	7	65	30	0.04%	85.71%		
Ukraine	203	127	1	0	128	57	0.07%	-36.95%		
<b>Southern Europe</b>	<b>2,578</b>	<b>2,533</b>	<b>57</b>	<b>44</b>	<b>2,634</b>	<b>1,144</b>	<b>1.52%</b>	<b>2.17%</b>		
Croatia	16	8	0	1	9	5	0.01%	-43.75%		
Greece	81	21	1	1	23	7	0.01%	-71.60%		
Italy	686	585	21	21	627	198	0.36%	-8.60%		
Portugal	147	118	2	1	121	54	0.07%	-17.69%		
Slovenia	57	24	1	2	27	8	0.02%	-52.63%		
Spain	1,470	1,646	18	12	1,676	825	0.97%	14.01%		
Turkey	121	131	14	6	151	47	0.09%	24.79%		
Others Europe	952	304	10	10	324	194	0.19%	-65.97%		

Source: Statistics and Tourism Information Department, MOT

## Visitor Arrivals to Cambodia by Country of Residence in September 2010

(by all means of transportation)

Regions Country of Residence	2009	2010			Total	Females	share	change
		Purpose of Visit					(%)	(%)
		Tourists	Business	Others			2010*	2010*/09
<b>GRAND TOTAL</b>	<b>151,937</b>	<b>160,603</b>	<b>10,281</b>	<b>2,228</b>	<b>173,112</b>	<b>74,935</b>	<b>100.00%</b>	<b>13.94%</b>
<b>Americas</b>	<b>9,890</b>	<b>9,305</b>	<b>649</b>	<b>395</b>	<b>10,349</b>	<b>3,913</b>	<b>5.98%</b>	<b>4.64%</b>
Argentina	151	202	2	1	205	102	0.12%	35.76%
Brazil	129	162	1	3	166	67	0.10%	28.68%
Canada	1,520	1,411	116	51	1,578	612	0.91%	3.82%
Chile	100	100	1	0	101	47	0.06%	1.00%
Colombia	58	84	1	2	87	55	0.05%	50.00%
Mexico	185	181	3	1	185	90	0.11%	0.00%
Peru	31	29	1	2	32	9	0.02%	3.23%
United States	7,495	6,879	517	328	7,724	2,808	4.46%	3.06%
Uruguay	6	0	0	0	0	0	0.00%	-100.00%
Others Americas	215	257	7	7	271	123	0.16%	26.05%
<b>Africa</b>	<b>437</b>	<b>279</b>	<b>42</b>	<b>13</b>	<b>334</b>	<b>101</b>	<b>0.19%</b>	<b>-23.57%</b>
Cameroon	93	24	3	2	29	5	0.02%	-68.82%
Ghana	48	35	1	0	36	1	0.02%	-25.00%
Nigeria	89	29	13	0	42	2	0.02%	-52.81%
Sudan	3	2	0	0	2	1	0.00%	-33.33%
South Africa	109	161	23	8	192	76	0.11%	76.15%
Others Africa	95	28	2	3	33	16	0.02%	-65.26%
<b>Middle East</b>	<b>499</b>	<b>656</b>	<b>24</b>	<b>5</b>	<b>685</b>	<b>246</b>	<b>0.40%</b>	<b>37.27%</b>
Egypt	9	10	6	1	17	4	0.01%	88.89%
Iran	38	61	1	0	62	9	0.04%	63.16%
Israel	390	518	15	2	535	213	0.31%	37.18%
Kuwait	34	41	0	0	41	8	0.02%	20.59%
Palestine	0							
Saudi Arabia	0	5	0	0	5	0	0.00%	
United Arab Emirates	0							
Others Middle East	28	21	2	2	25	12	0.01%	-10.71%
Same-day visitors	3,725	7,360	0	0	7,360	3,385	4.25%	97.58%

### Remark:

- Cambodian Overseas:	11,641
- Cambodian Residence:	35,956
- Cambodian outbound tourist departures:	44,866
- International outbound tourist departures:	206,427



**COMPILED BY:**

1. Mr. Kong Sopheareak

Director  
Statistics & Tourism Information Department  
Fax: +855 23 885003  
E-mail: kong@mot.gov.kh

2. Mr. Horth Vanny

Chief of Tourism Statistics Office  
Compile and data analysis  
Tel.: +855 12 827664