

KINGDOM OF CAMBODIA  
NATION RELIGION KING



# TOURISM STATISTICS REPORT

# February 2011

**MINISTRY OF TOURISM**

Statistics and Tourism Information Department

No. A3, Street 169, Sangkat Veal Vong, Khan 7 Makara, Phnom Penh, Cambodia.

Fax: +855 23 885003

E-mail: [kong@mot.gov.kh](mailto:kong@mot.gov.kh)

Web site: [www.mot.gov.kh](http://www.mot.gov.kh)

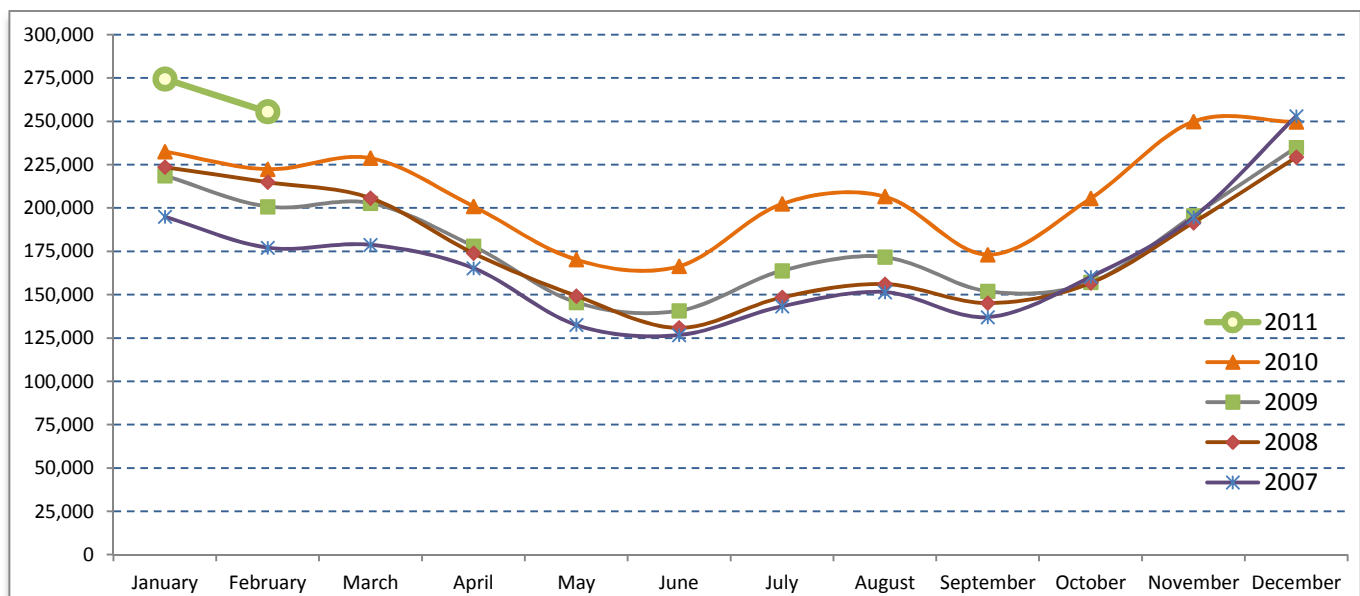
## Tourism Highlights

### International Tourist Arrivals, Average Length of Stay, Hotels Occupancy & Tourism Receipts 1993 - 2010

Years	Tourist Arrivals		Average Length	Hotels Occupancy	Tourism Receipts
	number	change (%)	of Stay (days)	(%)	(million US\$)
1993	118,183	-	N/A	N/A	N/A
1994	176,617	49.4%	N/A	N/A	N/A
1995	219,680	24.4%	8.00	37.00	100
1996	260,489	18.6%	7.50	40.00	118
1997	218,843	-16.0%	6.40	30.00	103
1998	289,524	32.3%	5.20	40.00	166
1999	367,743	27.0%	5.50	44.00	190
2000	466,365	26.8%	5.50	45.00	228
2001	604,919	29.7%	5.50	48.00	304
2002	786,524	30.0%	5.80	50.00	379
2003	701,014	-10.9%	5.50	50.00	347
2004	1,055,202	50.5%	6.30	52.00	578
2005	1,421,615	34.7%	6.30	52.00	832
2006	1,700,041	19.6%	6.50	54.79	1,049
2007	2,015,128	18.5%	6.50	54.79	1,400
2008	2,125,465	5.5%	6.65	62.68	1,595
2009	2,161,577	1.7%	6.45	63.57	1,561
2010	2,508,289	16.0%	6.45	65.74	1,786

### International tourist arrivals to Cambodia

Destination	Months	2007	2008	2009	2010	2011	change (%) 2011*/10
<b>Cambodia</b>	<b>Q1</b>	<b>550,813</b>	<b>644,205</b>	<b>622,288</b>	<b>683,692</b>	<b>529,970</b>	
<i>International tourist arrivals</i>	January	194,932	223,581	218,691	232,590	274,471	18.0
<i>by all means of</i>	February	177,130	214,902	200,789	222,354	255,499	14.9
<i>transportations</i>	March	178,751	205,722	202,808	228,748		
	<b>Q2</b>	<b>424,536</b>	<b>454,031</b>	<b>464,230</b>	<b>537,464</b>	<b>0</b>	
	April	165,347	173,903	177,955	200,965		
	May	132,512	149,275	145,564	170,164		
	June	126,677	130,853	140,711	166,335		
	<b>Q3</b>	<b>431,815</b>	<b>449,693</b>	<b>487,422</b>	<b>582,024</b>	<b>0</b>	
	July	143,310	148,449	163,817	202,349		
	August	151,478	156,098	171,668	206,563		
	September	137,027	145,146	151,937	173,112		
	<b>Q4</b>	<b>607,964</b>	<b>577,536</b>	<b>587,637</b>	<b>705,109</b>	<b>0</b>	
	October	160,235	156,718	157,105	205,515		
	November	194,646	191,549	195,570	249,892		
	December	253,083	229,269	234,962	249,702		
	<b>Total</b>	<b>2,015,128</b>	<b>2,125,465</b>	<b>2,161,577</b>	<b>2,508,289</b>	<b>529,970</b>	<b>16.5%</b>



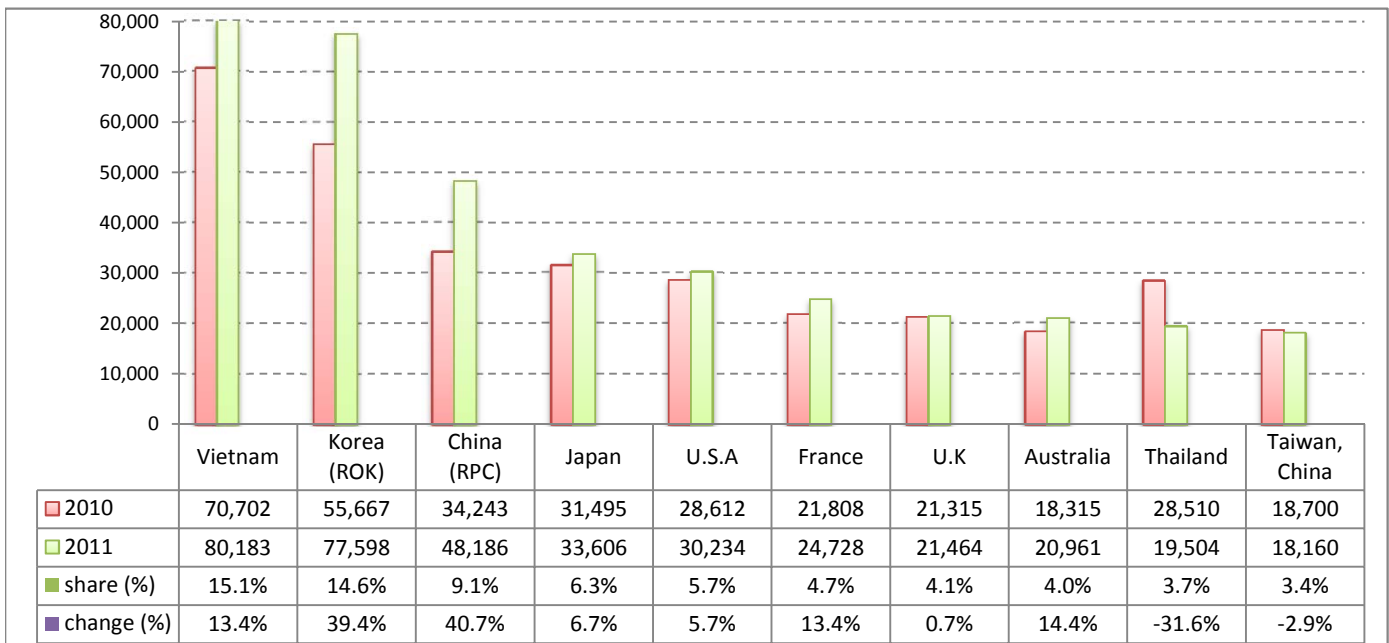
## Executive Summary Report in the First Two Months of 2011

I. International tourist arrivals to Cambodia in January - February was: **529,970**

### II. Mode of arrivals

	visitors	share (%)
<b>Air</b>	<b>297,189</b>	<b>56.1</b>
Phnom Penh Int'l Airport	116,107	21.9
Siem Reap Int'l Airport	181,082	34.2
<b>Land and Water ways</b>	<b>232,781</b>	<b>43.9</b>
Land	216,946	40.9
Water ways	15,835	3.0
<b>Total</b>	<b>529,970</b>	<b>100.0</b>

### III. Top ten markets arrivals in January - February 2011



### IV. International tourist arrivals to Cambodia in January - February 2011

	Inbound		share (%)		change (%)
	2010	2011	2010	2011	2011*/10
<b>Air</b>	<b>248,890</b>	<b>297,189</b>	<b>54.7</b>	<b>56.1</b>	<b>19.4</b>
Phnom Penh Int'l Airport	106,451	116,107	23.4	21.9	9.1
Siem Reap Int'l Airport	142,439	181,082	31.3	34.2	27.1
<b>Land and Water ways</b>	<b>206,054</b>	<b>232,781</b>	<b>45.3</b>	<b>43.9</b>	<b>13.0</b>
Land	191,774	216,946	42.2	40.9	13.1
Water ways	14,280	15,835	3.1	3.0	10.9
<b>Total</b>	<b>454,944</b>	<b>529,970</b>	<b>100.0</b>	<b>100.0</b>	<b>16.5</b>

### V. Remark: Percentage share of international tourist arrivals at destinations in January - February 2011

	Arrivals		share (%)		change (%)
	2010	2011	2010	2011	2011*/10
Phnom Penh & Other Destinations	206,724	217,023	45.4	41.0	5.0
Siem Reap Province	248,220	312,947	54.6	59.0	26.1
<b>Total</b>	<b>454,944</b>	<b>529,970</b>	<b>100.0</b>	<b>100.0</b>	<b>16.5</b>

### VI. Outbound tourists departures in January - February 2010

	Outbound		change (%)
	2010	2011	2011*/10
Cambodian outbound tourists	70,429	89,765	27.5
International outbound tourists	427,924	592,250	38.4

## International Tourist Arrivals to Cambodia by Country of Residence in January - February 2011

(by all mean of transportations)

Regions Country of Residence	2010	2011			Total	Female	share	change
		Purpose of Visit					(%)	(%)
		Tourists	Business	Other			2011*	2011*/10
<b>GRAND TOTAL</b>	<b>454,944</b>	<b>501,300</b>	<b>23,400</b>	<b>5,270</b>	<b>529,970</b>	<b>236,261</b>	<b>100.0</b>	<b>16.5</b>
<b>Asia and the Pacific</b>	<b>303,916</b>	<b>334,914</b>	<b>18,550</b>	<b>2,723</b>	<b>356,187</b>	<b>163,106</b>	<b>67.2</b>	<b>17.2</b>
<b>ASEAN</b>	<b>138,496</b>	<b>141,530</b>	<b>5,949</b>	<b>1,233</b>	<b>148,712</b>	<b>65,924</b>	<b>28.1</b>	<b>7.4</b>
Brunei Darussalam	42	38	2	24	64	19	0.0	52.4
Indonesia	1,740	1,797	500	59	2,356	837	0.4	35.4
Lao PDR	10,923	16,495	23	40	16,558	9,414	3.1	51.6
Malaysia	11,552	12,915	1,085	60	14,060	4,869	2.7	21.7
Myanmar	374	572	55	18	645	271	0.1	72.5
Philippines	8,328	8,205	836	176	9,217	5,571	1.7	10.7
Singapore	6,325	5,698	327	100	6,125	1,994	1.2	-3.2
Thailand	28,510	17,442	1,735	327	19,504	6,375	3.7	-31.6
Vietnam	70,702	78,368	1,386	429	80,183	36,574	15.1	13.4
<b>Eastern Asia</b>	<b>140,918</b>	<b>166,523</b>	<b>11,095</b>	<b>950</b>	<b>178,568</b>	<b>84,981</b>	<b>33.7</b>	<b>26.7</b>
China (RPC)	34,243	41,432	6,513	241	48,186	22,495	9.1	40.7
Hong Kong SAR	774	907	57	3	967	397	0.2	24.9
Japan	31,495	32,435	810	361	33,606	16,376	6.3	6.7
Korea (ROK)	55,667	75,228	2,031	339	77,598	37,547	14.6	39.4
Mongolia	39	45	1	5	51	29	0.0	30.8
Taiwan, China	18,700	16,476	1,683	1	18,160	8,137	3.4	-2.9
<b>Southern Asia</b>	<b>2,901</b>	<b>2,598</b>	<b>474</b>	<b>151</b>	<b>3,223</b>	<b>860</b>	<b>0.6</b>	<b>11.1</b>
Afghanistan	31	56	2	6	64	16	0.0	106.5
Bangladesh	185	116	45	22	183	27	0.0	-1.1
Bhutan		9	1	6	16	6	0.0	
India	2,233	2,113	317	63	2,493	711	0.5	11.6
Nepal	149	116	30	22	168	40	0.0	12.8
Pakistan	157	91	53	16	160	32	0.0	1.9
Srilanka	146	97	26	16	139	28	0.0	-4.8
<b>Western Asia</b>	<b>0</b>	<b>490</b>	<b>23</b>	<b>2</b>	<b>515</b>	<b>262</b>	<b>0.1</b>	
Kazakhstan		375	19	1	395	185	0.1	
Uzbekistan		115	4	1	120	77	0.0	
<b>Oceania</b>	<b>20,795</b>	<b>22,220</b>	<b>991</b>	<b>355</b>	<b>23,566</b>	<b>10,629</b>	<b>4.4</b>	<b>13.3</b>
Australia	18,315	19,788	849	324	20,961	9,572	4.0	14.4
Fiji		12	3	2	17	3	0.0	
New Zealand	2,480	2,420	139	29	2,588	1,054	0.5	4.4
Other Asia & the Pacific	806	1,553	18	32	1,603	450	0.3	98.9
<b>Europe</b>	<b>107,396</b>	<b>120,831</b>	<b>3,036</b>	<b>1,580</b>	<b>125,447</b>	<b>52,311</b>	<b>23.7</b>	<b>16.8</b>
<b>Northern Europe</b>	<b>33,474</b>	<b>33,118</b>	<b>975</b>	<b>380</b>	<b>34,473</b>	<b>13,140</b>	<b>6.5</b>	<b>3.0</b>
Denmark	2,317	2,655	62	20	2,737	1,189	0.5	18.1
Finland	1,672	1,710	43	38	1,791	635	0.3	7.1
Iceland	69	86	2	0	88	29	0.0	27.5
Ireland	1,502	1,363	34	18	1,415	489	0.3	-5.8
Norway	2,220	2,270	70	10	2,350	1,029	0.4	5.9
Sweden	4,379	4,500	100	28	4,628	1,817	0.9	5.7
United Kingdom	21,315	20,534	664	266	21,464	7,952	4.1	0.7
<b>Western Europe</b>	<b>50,979</b>	<b>53,730</b>	<b>1,665</b>	<b>930</b>	<b>56,325</b>	<b>23,015</b>	<b>10.6</b>	<b>10.5</b>
Austria	2,401	2,151	19	8	2,178	837	0.4	-9.3
Belgium	2,512	2,773	87	51	2,911	1,141	0.5	15.9
France	21,808	23,111	1,066	551	24,728	10,573	4.7	13.4
Germany	15,420	16,306	272	209	16,787	6,664	3.2	8.9
Luxembourg	134	100	3	2	105	34	0.0	-21.6
Monaco		8	0	0	8	2	0.0	
Netherlands	4,827	4,728	110	71	4,909	1,855	0.9	1.7
Switzerland	3,877	4,553	108	38	4,699	1,909	0.9	21.2
<b>Eastern Europe</b>	<b>13,675</b>	<b>23,218</b>	<b>201</b>	<b>66</b>	<b>23,485</b>	<b>11,965</b>	<b>4.4</b>	<b>71.7</b>
Bulgaria	166	107	0	2	109	60	0.0	-34.3
Czech Republic	930	878	7	1	886	359	0.2	-4.7
Estonia		305	3	2	310	116	0.1	
Hungary	1,205	891	16	1	908	411	0.2	-24.6
Lithuania		519	1	0	520	278	0.1	
Poland	2,139	2,141	9	12	2,162	1,120	0.4	1.1
Romania	526	248	1	1	250	134	0.0	-52.5
Russian Federation	7,806	16,816	144	35	16,995	8,749	3.2	117.7
Slovakia	229	267	4	7	278	102	0.1	21.4
Ukraine	674	1,046	16	5	1,067	636	0.2	58.3

## International Tourist Arrivals to Cambodia by Country of Residence in January - February 2011

(by all mean of transportations)

Regions Country of Residence	2010		2011			share		change	
			Purpose of Visit			Total	Female	(%)	(%)
			Tourists	Business	Other			2011*	2011*/10
<b>GRAND TOTAL</b>	<b>454,944</b>	<b>501,300</b>	<b>23,400</b>	<b>5,270</b>	<b>529,970</b>	<b>236,261</b>	<b>100.0</b>	<b>16.5</b>	
<b>Southern Europe</b>	<b>8,547</b>	<b>9,364</b>	<b>181</b>	<b>181</b>	<b>9,726</b>	<b>3,790</b>	<b>1.8</b>	<b>13.8</b>	
Croatia	124	143	4	2	149	55	0.0	20.2	
Greece	285	311	5	4	320	113	0.1	12.3	
Italy	5,202	5,519	83	51	5,653	2,130	1.1	8.7	
Portugal	348	441	13	8	462	223	0.1	32.8	
Serbia		120	2	3	125	58	0.0		
Slovenia	248	201	1	2	204	94	0.0	-17.7	
Spain	1,864	1,842	41	43	1,926	848	0.4	3.3	
Turkey	476	787	32	68	887	269	0.2	86.3	
Other Europe	721	1,401	14	23	1,438	401	0.3	99.4	
<b>Americas</b>	<b>40,600</b>	<b>42,489</b>	<b>1,693</b>	<b>911</b>	<b>45,093</b>	<b>19,651</b>	<b>8.5</b>	<b>11.1</b>	
Argentina	553	934	1	13	948	489	0.2	71.4	
Brazil	636	870	4	9	883	407	0.2	38.8	
Canada	8,957	9,509	337	101	9,947	4,338	1.9	11.1	
Chile	645	632	2	2	636	327	0.1	-1.4	
Colombia	307	1,039	9	6	1,054	515	0.2	243.3	
Costa Rica		28	1	0	29	19	0.0		
Ecuador		29	1	0	30	22	0.0		
Mexico	392	334	4	4	342	167	0.1	-12.8	
Peru	81	72	1	1	74	32	0.0	-8.6	
United States	28,612	28,166	1,319	749	30,234	13,042	5.7	5.7	
Uruguay	22	58	2	8	68	20	0.0	209.1	
Other Americas	395	818	12	18	848	273	0.2	114.7	
<b>Africa</b>	<b>862</b>	<b>920</b>	<b>92</b>	<b>40</b>	<b>1,052</b>	<b>356</b>	<b>0.2</b>	<b>22.0</b>	
Cameroon	104	50	1	4	55	7	0.0	-47.1	
Congo		27	0	3	30	2	0.0		
Ghana	139	74	4	2	80	11	0.0	-42.4	
Kenya		24	1	7	32	19	0.0		
Liberia		87	1	0	88	22	0.0		
Nigeria	129	27	59	4	90	10	0.0	-30.2	
Sudan	8	5	0	0	5	3	0.0	-37.5	
South Africa	425	511	25	7	543	213	0.1	27.8	
Uganda		41	0	3	44	31	0.0		
Other Africa	57	74	1	10	85	38	0.0	49.1	
<b>Middle East</b>	<b>2,170</b>	<b>2,146</b>	<b>29</b>	<b>16</b>	<b>2,191</b>	<b>837</b>	<b>0.4</b>	<b>1.0</b>	
Egypt	56	18	0	6	24	6	0.0	-57.1	
Iran	79	133	0	0	133	24	0.0	68.4	
Iraq		3	0	0	3	0	0.0		
Israel	1,886	1,774	25	2	1,801	759	0.3	-4.5	
Kuwait	108	74	0	0	74	2	0.0	-31.5	
Oman		14	0	1	15	0	0.0		
Palestine		2	1	0	3	0	0.0		
Qatar		26	0	0	26	16	0.0		
Saudi Arabia	3	8	1	0	9	0	0.0	200.0	
United Arab Emirates		18	0	0	18	2	0.0		
Yemen		15	2	1	18	2	0.0		
Other Middle East	38	61	0	6	67	26	0.0	76.3	

### Remark:

- Cambodian Overseas:	12,749
- Cambodian Residence:	78,620
- Cambodian outbound tourist departures:	89,765
- International outbound tourist departures:	532,666

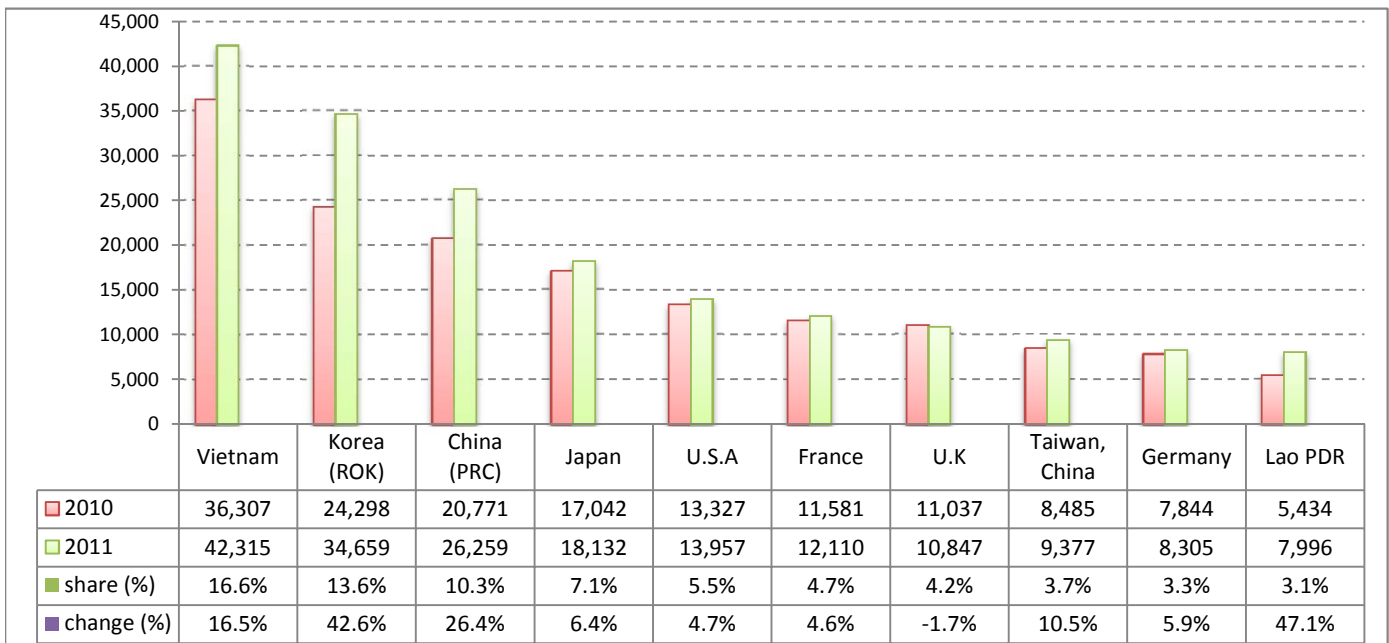
## Executive Summary Report in February 2011

I. International tourist arrivals to Cambodia in February was: **255,499**

### II. Mode of arrivals

	visitors	share (%)
<b>Air</b>	<b>145,008</b>	<b>56.8</b>
Phnom Penh Int'l Airport	57,202	22.4
Siem Reap Int'l Airport	87,806	34.4
<b>Land and Water ways</b>	<b>110,491</b>	<b>43.2</b>
Land	102,767	40.2
Water ways	7,724	3.0
<b>Total</b>	<b>255,499</b>	<b>100.0</b>

### III. Top ten markets arrivals in February 2011



### IV. International tourist arrivals to Cambodia in February 2011

	Inbound		share (%)		change (%)
	2010	2011	2010	2011	2011*/10
<b>Air</b>	<b>121,895</b>	<b>145,008</b>	<b>54.8</b>	<b>56.8</b>	<b>19.0</b>
Phnom Penh Int'l Airport	51,867	57,202	23.3	22.4	10.3
Siem Reap Int'l Airport	70,028	87,806	31.5	34.4	25.4
<b>Land and Water ways</b>	<b>100,459</b>	<b>110,491</b>	<b>45.2</b>	<b>43.2</b>	<b>10.0</b>
Land	93,275	102,767	41.9	40.2	10.2
Water ways	7,184	7,724	3.2	3.0	7.5
<b>Total</b>	<b>222,354</b>	<b>255,499</b>	<b>100.0</b>	<b>100.0</b>	<b>14.9</b>

### V. Remark: Percentage share of international tourist arrivals at destinations in February 2011

	Arrivals		share (%)		change (%)
	2010	2011	2010	2011	2011*/10
Phnom Penh & Other Destinations	96,297	108,906	43.3	42.6	13.1
Siem Reap Province	126,057	146,593	56.7	57.4	16.3
<b>Total</b>	<b>222,354</b>	<b>255,499</b>	<b>100.0</b>	<b>100.0</b>	<b>14.9</b>

### VI. Outbound tourists departures in February 2010

	Outbound		change (%)
	2010	2011	2011*/10
Cambodian outbound tourists	32,818	42,124	28.4
International outbound tourists	212,222	253,363	19.4

## International Tourist Arrivals to Cambodia by Country of Residence in February 2011

(by all mean of transportations)

Regions Country of Residence	2010	2011			Total	Female	share	change
		Purpose of Visit					(%)	(%)
		Tourists	Business	Other			2011*	2011*/10
<b>GRAND TOTAL</b>	<b>222,354</b>	<b>240,422</b>	<b>12,623</b>	<b>2,454</b>	<b>255,499</b>	<b>114,823</b>	<b>100.0</b>	<b>14.9</b>
<b>Asia and the Pacific</b>	<b>148,306</b>	<b>161,618</b>	<b>10,370</b>	<b>1,320</b>	<b>173,308</b>	<b>79,888</b>	<b>67.8</b>	<b>16.9</b>
<b>ASEAN</b>	<b>67,640</b>	<b>69,188</b>	<b>3,105</b>	<b>578</b>	<b>72,871</b>	<b>33,498</b>	<b>28.5</b>	<b>7.7</b>
Brunei Darussalam	18	16	2	4	22	7	0.0	22.2
Indonesia	890	711	228	16	955	336	0.4	7.3
Lao PDR	5,434	7,959	16	21	7,996	5,583	3.1	47.1
Malaysia	5,696	7,030	655	32	7,717	2,881	3.0	35.5
Myanmar	165	297	21	6	324	142	0.1	96.4
Philippines	3,981	3,992	297	55	4,344	2,681	1.7	9.1
Singapore	2,880	2,767	216	21	3,004	1,034	1.2	4.3
Thailand	12,269	5,221	799	174	6,194	2,097	2.4	-49.5
Vietnam	36,307	41,195	871	249	42,315	18,737	16.6	16.5
<b>Eastern Asia</b>	<b>70,940</b>	<b>81,908</b>	<b>6,617</b>	<b>535</b>	<b>89,060</b>	<b>41,902</b>	<b>34.9</b>	<b>25.5</b>
China (RPC)	20,771	21,874	4,214	171	26,259	12,188	10.3	26.4
Hong Kong SAR	325	575	31	3	609	261	0.2	87.4
Japan	17,042	17,565	393	174	18,132	8,642	7.1	6.4
Korea (ROK)	24,298	33,504	970	185	34,659	16,622	13.6	42.6
Mongolia	19	22	1	1	24	10	0.0	26.3
Taiwan, China	8,485	8,368	1,008	1	9,377	4,179	3.7	10.5
<b>Southern Asia</b>	<b>1,491</b>	<b>1,283</b>	<b>206</b>	<b>55</b>	<b>1,544</b>	<b>403</b>	<b>0.6</b>	<b>3.6</b>
Afghanistan	11	52	2	5	59	16	0.0	436.4
Bangladesh	88	60	20	5	85	10	0.0	-3.4
Bhutan		5	1	2	8	4	0.0	
India	1,140	1,023	138	23	1,184	325	0.5	3.9
Nepal	66	58	13	10	81	17	0.0	22.7
Pakistan	86	41	25	5	71	14	0.0	-17.4
Srilanka	100	44	7	5	56	17	0.0	-44.0
<b>Western Asia</b>	<b>0</b>	<b>207</b>	<b>10</b>	<b>2</b>	<b>219</b>	<b>109</b>	<b>0.1</b>	
Kazakhstan		162	9	1	172	85	0.1	
Uzbekistan		45	1	1	47	24	0.0	
<b>Oceania</b>	<b>7,961</b>	<b>8,261</b>	<b>427</b>	<b>132</b>	<b>8,820</b>	<b>3,871</b>	<b>3.5</b>	<b>10.8</b>
Australia	7,062	7,417	373	117	7,907	3,512	3.1	12.0
Fiji		6	2	1	9	2	0.0	
New Zealand	899	838	52	14	904	357	0.4	0.6
Other Asia & the Pacific	274	771	5	18	794	105	0.3	189.8
<b>Europe</b>	<b>53,310</b>	<b>57,369</b>	<b>1,392</b>	<b>688</b>	<b>59,449</b>	<b>25,252</b>	<b>23.3</b>	<b>11.5</b>
<b>Northern Europe</b>	<b>16,854</b>	<b>16,365</b>	<b>423</b>	<b>149</b>	<b>16,937</b>	<b>6,870</b>	<b>6.6</b>	<b>0.5</b>
Denmark	1,103	1,291	25	10	1,326	659	0.5	20.2
Finland	774	731	21	16	768	261	0.3	-0.8
Iceland	39	28	0	0	28	7	0.0	-28.2
Ireland	736	607	13	5	625	209	0.2	-15.1
Norway	1,092	1,169	28	6	1,203	582	0.5	10.2
Sweden	2,073	2,081	45	14	2,140	900	0.8	3.2
United Kingdom	11,037	10,458	291	98	10,847	4,252	4.2	-1.7
<b>Western Europe</b>	<b>26,171</b>	<b>25,973</b>	<b>765</b>	<b>392</b>	<b>27,130</b>	<b>11,282</b>	<b>10.6</b>	<b>3.7</b>
Austria	1,304	1,089	6	7	1,102	427	0.4	-15.5
Belgium	1,222	1,300	38	26	1,364	523	0.5	11.6
France	11,581	11,417	477	216	12,110	5,178	4.7	4.6
Germany	7,844	8,083	134	88	8,305	3,454	3.3	5.9
Luxembourg	92	45	2	1	48	16	0.0	-47.8
Monaco		7	0	0	7	2	0.0	
Netherlands	2,212	1,973	57	35	2,065	782	0.8	-6.6
Switzerland	1,916	2,059	51	19	2,129	900	0.8	11.1
<b>Eastern Europe</b>	<b>6,059</b>	<b>10,359</b>	<b>102</b>	<b>35</b>	<b>10,496</b>	<b>5,454</b>	<b>4.1</b>	<b>73.2</b>
Bulgaria	71	39	0	0	39	24	0.0	-45.1
Czech Republic	426	427	5	0	432	173	0.2	1.4
Estonia		156	1	2	159	59	0.1	
Hungary	569	381	7	1	389	163	0.2	-31.6
Lithuania		274	1	0	275	152	0.1	
Poland	1,158	1,131	4	5	1,140	583	0.4	-1.6
Romania	341	80	0	1	81	49	0.0	-76.2
Russian Federation	3,071	7,325	72	16	7,413	3,910	2.9	141.4
Slovakia	93	118	2	5	125	44	0.0	34.4
Ukraine	330	428	10	5	443	297	0.2	34.2

Source: Statistics and ICT Department, MOT

## International Tourist Arrivals to Cambodia by Country of Residence in February 2011

(by all mean of transportations)

Regions Country of Residence	2010		2011			share		change	
			Purpose of Visit			Total	Female	(%)	(%)
			Tourists	Business	Other			2011*	2011*/10
<b>GRAND TOTAL</b>	<b>222,354</b>	<b>240,422</b>	<b>12,623</b>	<b>2,454</b>	<b>255,499</b>	<b>114,823</b>	<b>100.0</b>	<b>14.9</b>	
<b>Southern Europe</b>	<b>3,983</b>	<b>4,029</b>	<b>99</b>	<b>98</b>	<b>4,226</b>	<b>1,557</b>	<b>1.7</b>	<b>6.1</b>	
Croatia	46	52	2	1	55	19	0.0	19.6	
Greece	151	167	2	3	172	72	0.1	13.9	
Italy	2,325	2,244	46	19	2,309	798	0.9	-0.7	
Portugal	210	203	9	4	216	109	0.1	2.9	
Serbia		61	1	0	62	32	0.0		
Slovenia	158	72	0	0	72	31	0.0	-54.4	
Spain	877	740	17	18	775	335	0.3	-11.6	
Turkey	216	490	22	53	565	161	0.2	161.6	
Other Europe	243	643	3	14	660	89	0.3	171.6	
<b>Americas</b>	<b>19,174</b>	<b>20,020</b>	<b>806</b>	<b>424</b>	<b>21,250</b>	<b>9,116</b>	<b>8.3</b>	<b>10.8</b>	
Argentina	204	332	0	1	333	173	0.1	63.2	
Brazil	253	307	3	4	314	137	0.1	24.1	
Canada	4,442	4,455	187	45	4,687	2,059	1.8	5.5	
Chile	441	378	1	0	379	191	0.1	-14.1	
Colombia	79	932	5	0	937	463	0.4	1086.1	
Costa Rica		11	1	0	12	8	0.0		
Ecuador		14	1	0	15	12	0.0		
Mexico	208	145	1	4	150	79	0.1	-27.9	
Peru	40	24	0	0	24	10	0.0	-40.0	
United States	13,327	12,993	605	359	13,957	5,906	5.5	4.7	
Uruguay	10	8	0	1	9	2	0.0	-10.0	
Other Americas	170	421	2	10	433	76	0.2	154.7	
<b>Africa</b>	<b>343</b>	<b>387</b>	<b>42</b>	<b>18</b>	<b>447</b>	<b>140</b>	<b>0.2</b>	<b>30.3</b>	
Cameroon	42	24	0	1	25	2	0.0	-40.5	
Congo		15	0	0	15	0	0.0		
Ghana	32	29	2	0	31	1	0.0	-3.1	
Kenya		12	0	5	17	10	0.0		
Liberia		42	0	0	42	13	0.0		
Nigeria	57	15	34	2	51	6	0.0	-10.5	
Sudan	4	2	0	0	2	2	0.0	-50.0	
South Africa	184	193	6	2	201	78	0.1	9.2	
Uganda		17	0	2	19	9	0.0		
Other Africa	24	38	0	6	44	19	0.0	83.3	
<b>Middle East</b>	<b>1,221</b>	<b>1,028</b>	<b>13</b>	<b>4</b>	<b>1,045</b>	<b>427</b>	<b>0.4</b>	<b>-14.4</b>	
Egypt	34	11	0	1	12	2	0.0	-64.7	
Iran	54	56	0	0	56	10	0.0	3.7	
Iraq		1	0	0	1	0	0.0		
Israel	1,058	844	13	0	857	385	0.3	-19.0	
Kuwait	57	39	0	0	39	1	0.0	-31.6	
Oman		4	0	0	4	0	0.0		
Palestine		1	0	0	1	0	0.0		
Qatar		23	0	0	23	16	0.0		
Saudi Arabia	2	4	0	0	4	0	0.0	100.0	
United Arab Emirates		9	0	0	9	0	0.0		
Yemen		4	0	0	4	1	0.0		
Other Middle East	16	32	0	3	35	12	0.0	118.8	

### Remark:

- Cambodian Overseas:	5,387
- Cambodian Residence:	34,714
- Cambodian outbound tourist departures:	42,124
- International outbound tourist departures:	253,363



**COMPILED BY:**

1. Mr. Kong Sopheareak

Director  
Statistics & Tourism Information Department  
Fax: +855 23 885003  
E-mail: kong@mot.gov.kh

2. Mr. Horth Vanny

Chief of Tourism Statistics Office  
Compile and data analysis  
Tel.: +855 12 827664