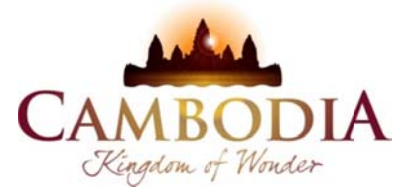




KINGDOM OF CAMBODIA  
NATION RELIGION KING



# TOURISM STATISTICS REPORT

# August 2011

**MINISTRY OF TOURISM**

Statistics and Tourism Information Department

No. A3, Street 169, Sangkat Veal Vong, Khan 7 Makara, Phnom Penh, Cambodia.

Fax: +855 23 885003

E-mail: [kong@mot.gov.kh](mailto:kong@mot.gov.kh)

Web site: [www.mot.gov.kh](http://www.mot.gov.kh)

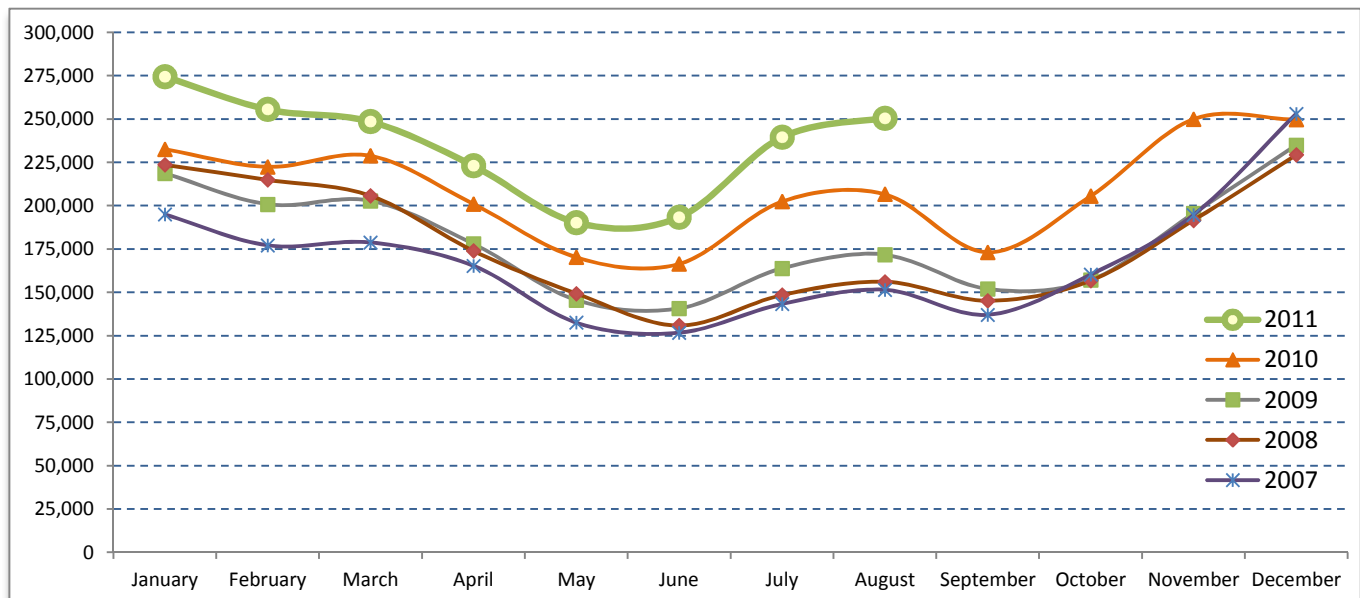
## Tourism Highlights

### International Tourist Arrivals, Average Length of Stay, Hotels Occupancy & Tourism Receipts 1993 - 2010

Years	Tourist Arrivals		Average Length of Stay (days)	Hotels Occupancy (%)	Tourism Receipts (million US\$)
	number	change (%)			
1993	118,183	-	N/A	N/A	N/A
1994	176,617	49.4%	N/A	N/A	N/A
1995	219,680	24.4%	8.00	37.00	100
1996	260,489	18.6%	7.50	40.00	118
1997	218,843	-16.0%	6.40	30.00	103
1998	289,524	32.3%	5.20	40.00	166
1999	367,743	27.0%	5.50	44.00	190
2000	466,365	26.8%	5.50	45.00	228
2001	604,919	29.7%	5.50	48.00	304
2002	786,524	30.0%	5.80	50.00	379
2003	701,014	-10.9%	5.50	50.00	347
2004	1,055,202	50.5%	6.30	52.00	578
2005	1,421,615	34.7%	6.30	52.00	832
2006	1,700,041	19.6%	6.50	54.79	1,049
2007	2,015,128	18.5%	6.50	54.79	1,400
2008	2,125,465	5.5%	6.65	62.68	1,595
2009	2,161,577	1.7%	6.45	63.57	1,561
2010	2,508,289	16.0%	6.45	65.74	1,786

### International tourist arrivals to Cambodia

Destination	Months	2007	2008	2009	2010	2011	change (%) 2011*/10
<b>Cambodia</b>	<b>Q1</b>	<b>550,813</b>	<b>644,205</b>	<b>622,288</b>	<b>683,692</b>	<b>778,467</b>	<b>13.9</b>
<i>International tourist arrivals</i>	January	194,932	223,581	218,691	232,590	274,471	18.0
<i>by all means of</i>	February	177,130	214,902	200,789	222,354	255,499	14.9
<i>transportations</i>	March	178,751	205,722	202,808	228,748	248,497	8.6
	<b>Q2</b>	<b>424,536</b>	<b>454,031</b>	<b>464,230</b>	<b>537,464</b>	<b>606,562</b>	<b>12.9</b>
	April	165,347	173,903	177,955	200,965	223,032	11.0
	May	132,512	149,275	145,564	170,164	190,258	11.8
	June	126,677	130,853	140,711	166,335	193,272	16.2
	<b>Q3</b>	<b>431,815</b>	<b>449,693</b>	<b>487,422</b>	<b>582,024</b>	<b>489,956</b>	
	July	143,310	148,449	163,817	202,349	239,527	18.4
	August	151,478	156,098	171,668	206,563	250,429	21.2
	September	137,027	145,146	151,937	173,112		
	<b>Q4</b>	<b>607,964</b>	<b>577,536</b>	<b>587,637</b>	<b>705,109</b>	<b>0</b>	
	October	160,235	156,718	157,105	205,515		
	November	194,646	191,549	195,570	249,892		
	December	253,083	229,269	234,962	249,702		
	<b>Total</b>	<b>2,015,128</b>	<b>2,125,465</b>	<b>2,161,577</b>	<b>2,508,289</b>	<b>1,874,985</b>	<b>15.0%</b>



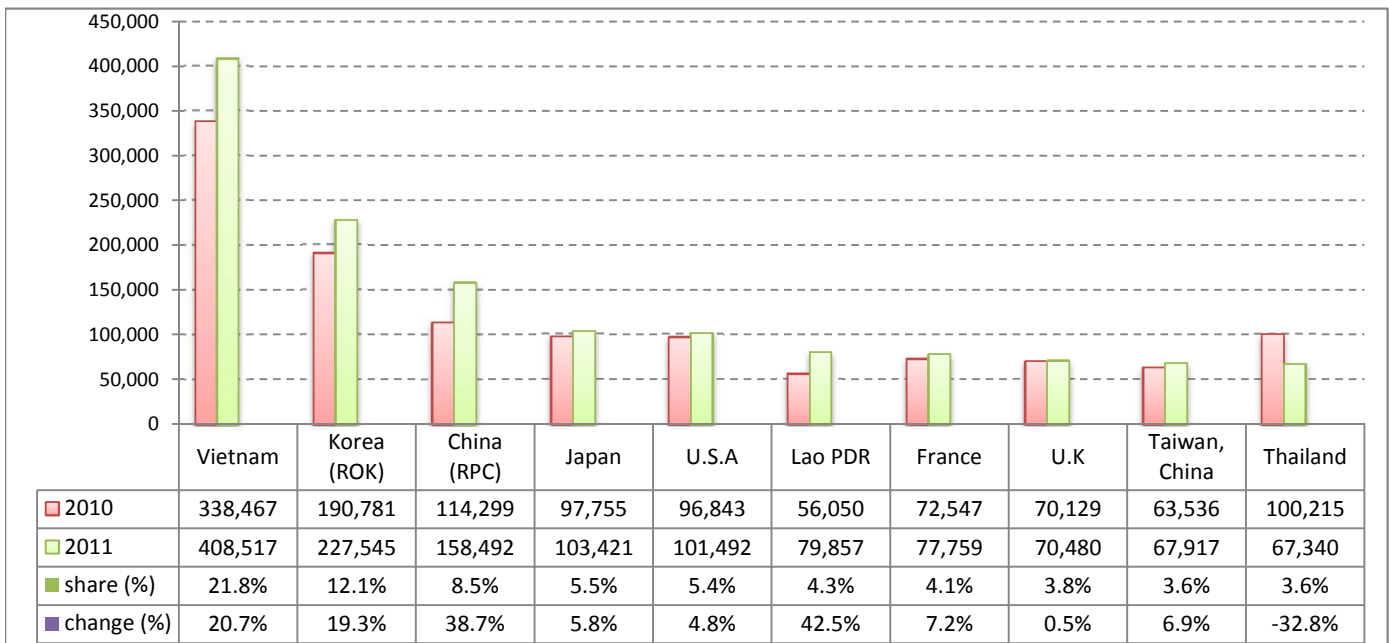
## Executive Summary Report in the First Eight Months of 2011

I. International tourist arrivals to Cambodia in January - August was: **1,874,985**

### II. Mode of arrivals

	visitors	share (%)
<b>Air</b>	<b>954,381</b>	<b>50.9</b>
Phnom Penh Int'l Airport	422,521	22.5
Siem Reap Int'l Airport	531,860	28.4
<b>Land and Water ways</b>	<b>920,604</b>	<b>49.1</b>
Land	864,826	46.1
Water ways	55,778	3.0
<b>Total</b>	<b>1,874,985</b>	<b>100.0</b>

### III. Top ten markets arrivals in January - August 2011



### IV. International tourist arrivals to Cambodia in January - August 2011

	Inbound		share (%)		change (%)
	2010	2011	2010	2011	2011*/10
<b>Air</b>	<b>834,716</b>	<b>954,381</b>	<b>51.2</b>	<b>50.9</b>	<b>14.3</b>
Phnom Penh Int'l Airport	381,207	422,521	23.4	22.5	10.8
Siem Reap Int'l Airport	453,509	531,860	27.8	28.4	17.3
<b>Land and Water ways</b>	<b>795,352</b>	<b>920,604</b>	<b>48.8</b>	<b>49.1</b>	<b>15.7</b>
Land	742,177	864,826	45.5	46.1	16.5
Water ways	53,175	55,778	3.3	3.0	4.9
<b>Total</b>	<b>1,630,068</b>	<b>1,874,985</b>	<b>100.0</b>	<b>100.0</b>	<b>15.0</b>

### V. Remark: Percentage share of international tourist arrivals at destinations in January - August 2011

	Arrivals		share (%)		change (%)
	2010	2011	2010	2011	2011*/10
Phnom Penh & Other Destinations	787,195	826,753	48.3	44.1	5.0
Siem Reap Province	842,873	1,048,232	51.7	55.9	24.4
<b>Total</b>	<b>1,630,068</b>	<b>1,874,985</b>	<b>100.0</b>	<b>100.0</b>	<b>15.0</b>

### VI. Outbound tourists departures in January - August 2011

	Outbound		change (%)
	2010	2011	2011*/10
Cambodian outbound tourists	321,473	431,919	34.4
International outbound tourists	1,545,888	1,867,100	20.8

## International Tourist Arrivals to Cambodia by Country of Residence in January - August 2011

(by all mean of transportations)

Regions Country of Residence	2010	2011			Total	Female	share	change
		Purpose of Visit					(%)	(%)
		Tourists	Business	Other			2011*	2011*/10
<b>GRAND TOTAL</b>	<b>1,630,068</b>	<b>1,666,793</b>	<b>92,072</b>	<b>19,703</b>	<b>1,874,985</b>	<b>839,074</b>	<b>100.0</b>	<b>15.0</b>
<b>Asia and the Pacific</b>	<b>1,175,631</b>	<b>1,276,213</b>	<b>76,644</b>	<b>10,914</b>	<b>1,363,771</b>	<b>624,644</b>	<b>72.7</b>	<b>16.0</b>
<b>ASEAN</b>	<b>621,261</b>	<b>679,769</b>	<b>22,929</b>	<b>5,061</b>	<b>707,759</b>	<b>321,841</b>	<b>37.7</b>	<b>13.9</b>
Brunei Darussalam	339	227	12	83	322	132	0.0	-5.0
Indonesia	7,674	7,676	1,986	384	10,046	3,906	0.5	30.9
Lao PDR	56,050	79,377	98	382	79,857	53,411	4.3	42.5
Malaysia	52,269	62,155	4,183	195	66,533	23,461	3.5	27.3
Myanmar	1,629	2,436	293	79	2,808	1,199	0.1	72.4
Philippines	36,861	38,633	3,586	740	42,959	25,662	2.3	16.5
Singapore	27,757	27,823	1,376	178	29,377	10,998	1.6	5.8
Thailand	100,215	59,741	6,545	1,054	67,340	21,541	3.6	-32.8
Vietnam	338,467	401,701	4,850	1,966	408,517	181,531	21.8	20.7
<b>Eastern Asia</b>	<b>469,485</b>	<b>509,832</b>	<b>47,547</b>	<b>3,649</b>	<b>561,028</b>	<b>264,840</b>	<b>29.9</b>	<b>19.5</b>
China (RPC)	114,299	129,399	28,204	889	158,492	72,190	8.5	38.7
Hong Kong SAR	2,906	3,290	180	7	3,477	1,593	0.2	19.6
Japan	97,755	98,305	3,687	1,429	103,421	47,845	5.5	5.8
Korea (ROK)	190,781	217,142	9,117	1,286	227,545	111,870	12.1	19.3
Mongolia	208	147	10	19	176	93	0.0	-15.4
Taiwan, China	63,536	61,549	6,349	19	67,917	31,249	3.6	6.9
<b>Southern Asia</b>	<b>11,845</b>	<b>9,909</b>	<b>2,147</b>	<b>637</b>	<b>12,693</b>	<b>3,298</b>	<b>0.7</b>	<b>7.2</b>
Afghanistan	155	70	6	13	89	17	0.0	-42.6
Bangladesh	1,135	587	137	88	812	91	0.0	-28.5
Bhutan		38	6	21	65	22	0.0	
India	8,534	7,843	1,452	315	9,610	2,698	0.5	12.6
Nepal	666	480	157	66	703	167	0.0	5.6
Pakistan	670	367	253	74	694	135	0.0	3.6
Srilanka	685	524	136	60	720	168	0.0	5.1
<b>Western Asia</b>	<b>0</b>	<b>1,292</b>	<b>95</b>	<b>10</b>	<b>1,397</b>	<b>776</b>	<b>0.1</b>	
Kazakhstan		780	77	7	864	400	0.0	
Uzbekistan		512	18	3	533	376	0.0	
<b>Oceania</b>	<b>70,297</b>	<b>70,707</b>	<b>3,821</b>	<b>1,434</b>	<b>75,962</b>	<b>32,828</b>	<b>4.1</b>	<b>8.1</b>
Australia	61,627	61,026	3,252	1,280	65,558	28,708	3.5	6.4
Fiji		53	17	9	79	25	0.0	
New Zealand	8,670	9,628	552	145	10,325	4,095	0.6	19.1
Other Asia & the Pacific	2,743	4,704	105	123	4,932	1,061	0.3	79.8
<b>Europe</b>	<b>313,774</b>	<b>246,986</b>	<b>8,347</b>	<b>4,527</b>	<b>356,277</b>	<b>149,155</b>	<b>19.0</b>	<b>13.5</b>
<b>Northern Europe</b>	<b>99,983</b>	<b>6,369</b>	<b>212</b>	<b>83</b>	<b>103,081</b>	<b>39,981</b>	<b>5.5</b>	<b>3.1</b>
Denmark	5,633	6,369	212	83	6,664	2,743	0.4	18.3
Finland	3,595	4,198	142	120	4,460	1,675	0.2	24.1
Iceland	172	240	6	1	247	85	0.0	43.6
Ireland	5,734	5,491	186	77	5,754	2,322	0.3	0.3
Norway	5,445	5,430	205	72	5,707	2,336	0.3	4.8
Sweden	9,275	9,328	311	130	9,769	3,759	0.5	5.3
United Kingdom	70,129	66,586	2,919	975	70,480	27,061	3.8	0.5
<b>Western Europe</b>	<b>150,845</b>	<b>149,398</b>	<b>6,500</b>	<b>3,582</b>	<b>159,480</b>	<b>65,029</b>	<b>8.5</b>	<b>5.7</b>
Austria	5,472	4,864	103	73	5,040	1,970	0.3	-7.9
Belgium	9,185	8,630	303	221	9,154	3,713	0.5	-0.3
France	72,547	71,491	4,212	2,056	77,759	32,946	4.1	7.2
Germany	38,183	39,293	1,045	810	41,148	15,955	2.2	7.8
Luxembourg	431	326	8	15	349	148	0.0	-19.0
Monaco		54	0	3	57	24	0.0	
Netherlands	15,484	14,515	449	253	15,217	5,993	0.8	-1.7
Switzerland	9,543	10,225	380	151	10,756	4,280	0.6	12.7
<b>Eastern Europe</b>	<b>31,022</b>	<b>54,725</b>	<b>776</b>	<b>240</b>	<b>55,741</b>	<b>29,175</b>	<b>3.0</b>	<b>79.7</b>
Bulgaria	304	242	5	9	256	131	0.0	-15.8
Czech Republic	1,869	2,057	27	7	2,091	876	0.1	11.9
Estonia		576	13	11	600	226	0.0	
Hungary	1,987	1,753	51	9	1,813	828	0.1	-8.8
Lithuania		942	6	1	949	505	0.1	
Poland	4,767	5,093	38	46	5,177	2,633	0.3	8.6
Romania	872	644	13	7	664	357	0.0	-23.9
Russian Federation	18,899	40,247	529	112	40,888	21,874	2.2	116.4
Slovakia	669	769	15	24	808	349	0.0	20.8
Ukraine	1,655	2,402	79	14	2,495	1,396	0.1	50.8

## International Tourist Arrivals to Cambodia by Country of Residence in January - August 2011

(by all mean of transportations)

Regions Country of Residence	2010		2011			share		change	
			Purpose of Visit			Total	Female	(%)	(%)
			Tourists	Business	Other			2011*	2011*/10
<b>GRAND TOTAL</b>	<b>1,630,068</b>	<b>1,666,793</b>	<b>92,072</b>	<b>19,703</b>	<b>1,874,985</b>	<b>839,074</b>	<b>100.0</b>	<b>15.0</b>	
<b>Southern Europe</b>	<b>29,685</b>	<b>32,266</b>	<b>785</b>	<b>530</b>	<b>33,581</b>	<b>14,101</b>	<b>1.8</b>	<b>13.1</b>	
Croatia	293	281	19	7	307	115	0.0	4.8	
Greece	1,058	788	22	7	817	305	0.0	-22.8	
Italy	13,130	13,739	351	186	14,276	5,448	0.8	8.7	
Portugal	1,544	1,891	28	24	1,943	927	0.1	25.8	
Serbia		252	6	10	268	113	0.0		
Slovenia	441	481	7	4	492	212	0.0	11.6	
Spain	11,955	13,162	220	188	13,570	6,397	0.7	13.5	
Turkey	1,264	1,672	132	104	1,908	584	0.1	50.9	
Other Europe	2,239	4,228	74	92	4,394	869	0.2	96.2	
<b>Americas</b>	<b>132,231</b>	<b>134,560</b>	<b>6,577</b>	<b>4,028</b>	<b>145,165</b>	<b>62,024</b>	<b>7.7</b>	<b>9.8</b>	
Argentina	1,438	4,108	9	32	4,149	2,150	0.2	188.5	
Brazil	1,534	2,210	21	41	2,272	1,091	0.1	48.1	
Canada	25,933	27,041	1,250	367	28,658	12,647	1.5	10.5	
Chile	1,661	1,653	46	20	1,719	798	0.1	3.5	
Colombia	671	1,620	36	15	1,671	810	0.1	149.0	
Costa Rica		138	10	5	153	91	0.0		
Ecuador		104	5	3	112	60	0.0		
Mexico	2,061	2,081	35	18	2,134	1,031	0.1	3.5	
Peru	280	294	5	11	310	139	0.0	10.7	
United States	96,843	92,956	5,102	3,434	101,492	42,236	5.4	4.8	
Uruguay	281	479	3	8	490	274	0.0	74.4	
Other Americas	1,529	1,876	55	74	2,005	697	0.1	31.1	
<b>Africa</b>	<b>3,123</b>	<b>3,518</b>	<b>354</b>	<b>143</b>	<b>4,015</b>	<b>1,393</b>	<b>0.2</b>	<b>28.6</b>	
Cameroon	362	305	6	8	319	62	0.0	-11.9	
Congo		118	1	5	124	26	0.0		
Ghana	354	309	15	14	338	46	0.0	-4.5	
Kenya		155	7	33	195	89	0.0		
Liberia		310	3	0	313	61	0.0		
Nigeria	554	151	184	14	349	46	0.0	-37.0	
Sudan	27	23	1	3	27	11	0.0	0.0	
South Africa	1,565	1,717	126	24	1,867	780	0.1	19.3	
Uganda		235	2	9	246	181	0.0		
Other Africa	261	195	9	33	237	91	0.0	-9.2	
<b>Middle East</b>	<b>5,309</b>	<b>5,516</b>	<b>150</b>	<b>91</b>	<b>5,757</b>	<b>1,858</b>	<b>0.3</b>	<b>8.4</b>	
Egypt	148	76	6	18	100	20	0.0	-32.4	
Iran	335	467	10	4	481	68	0.0	43.6	
Iraq		45	3	9	57	15	0.0		
Israel	4,237	4,054	118	24	4,196	1,625	0.2	-1.0	
Kuwait	371	379	0	0	379	7	0.0	2.2	
Oman		76	0	5	81	10	0.0		
Palestine		19	1	0	20	2	0.0		
Qatar		54	0	0	54	23	0.0		
Saudi Arabia	49	40	3	4	47	12	0.0	-4.1	
United Arab Emirates		108	0	1	109	12	0.0		
Yemen		64	6	4	74	11	0.0		
Other Middle East	169	134	3	22	159	53	0.0	-5.9	

### Remark:

- Cambodian Overseas:	52,179
- Cambodian Residence:	390,317
- Cambodian outbound tourist departures:	431,919
- International outbound tourist departures:	1,867,100

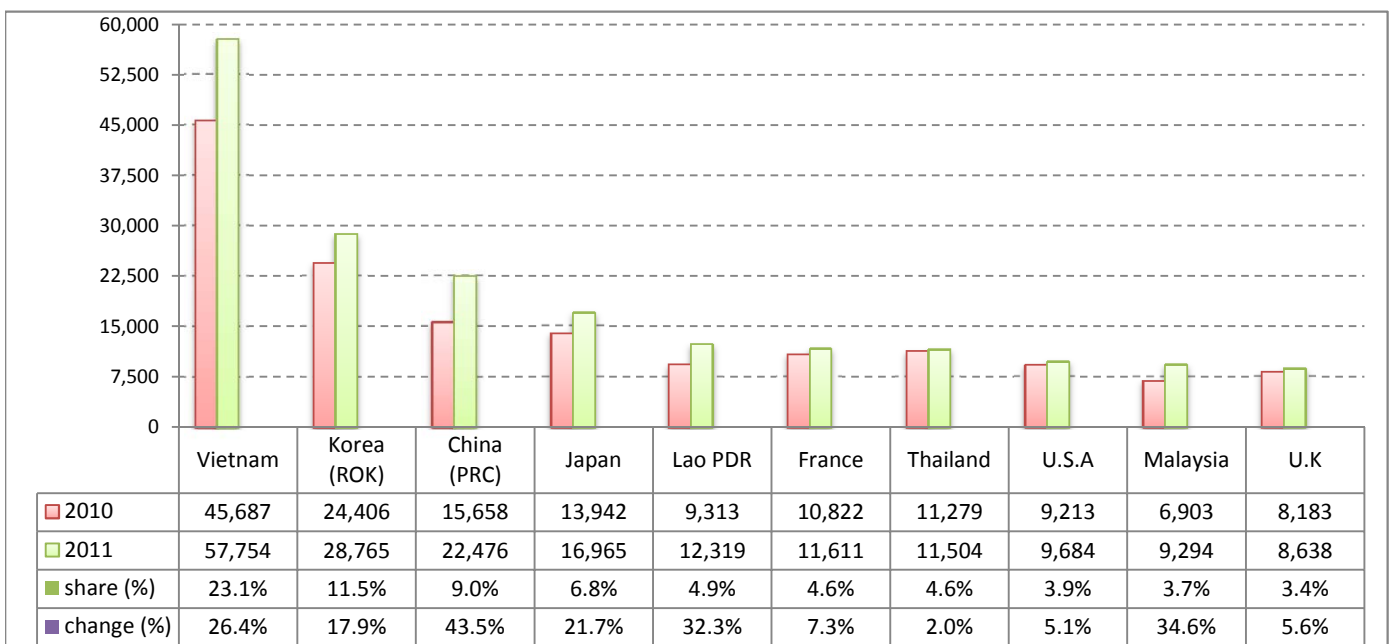
I. International tourist arrivals to Cambodia in August was:

250,429

II. Mode of arrivals

	visitors	share (%)
<b>Air</b>	<b>123,666</b>	<b>49.4</b>
Phnom Penh Int'l Airport	55,182	22.0
Siem Reap Int'l Airport	68,484	27.3
<b>Land and Water ways</b>	<b>126,763</b>	<b>50.6</b>
Land	118,913	47.5
Water ways	7,850	3.1
<b>Total</b>	<b>250,429</b>	<b>100.0</b>

III. Top ten markets arrivals in August 2011



IV. International tourist arrivals to Cambodia in August 2011

	Inbound		share (%)		change (%)
	2010	2011	2010	2011	2011*/10
<b>Air</b>	<b>104,786</b>	<b>123,666</b>	<b>50.7</b>	<b>49.4</b>	<b>18.0</b>
Phnom Penh Int'l Airport	46,697	55,182	22.6	22.0	18.2
Siem Reap Int'l Airport	58,089	68,484	28.1	27.3	17.9
<b>Land and Water ways</b>	<b>101,777</b>	<b>126,763</b>	<b>49.3</b>	<b>50.6</b>	<b>24.5</b>
Land	94,371	118,913	45.7	47.5	26.0
Water ways	7,406	7,850	3.6	3.1	6.0
<b>Total</b>	<b>206,563</b>	<b>250,429</b>	<b>100.0</b>	<b>100.0</b>	<b>21.2</b>

V. Remark: Percentage share of international tourist arrivals at destinations in August 2011

	Arrivals		share (%)		change (%)
	2010	2011	2010	2011	2011*/10
Phnom Penh & Other Destinations	100,061	109,660	48.4	43.8	9.6
Siem Reap Province	106,502	140,769	51.6	56.2	32.2
<b>Total</b>	<b>206,563</b>	<b>250,429</b>	<b>100.0</b>	<b>100.0</b>	<b>21.2</b>

VI. Outbound tourists departures in August 2011

	Outbound		change (%)
	2010	2011	2011*/10
Cambodian outbound tourists	44,866	74,871	66.9
International outbound tourists	206,427	257,499	24.7

## International Tourist Arrivals to Cambodia by Country of Residence in August 2011

(by all mean of transportations)

Regions Country of Residence	2010	2011			Total	Female	share	change
		Purpose of Visit					(%)	(%)
		Tourists	Business	Other			2011*	2011*/10
<b>GRAND TOTAL</b>	<b>206,563</b>	<b>235,976</b>	<b>11,673</b>	<b>2,780</b>	<b>250,429</b>	<b>113,490</b>	<b>100.0</b>	<b>21.2</b>
<b>Asia and the Pacific</b>	<b>153,802</b>	<b>178,567</b>	<b>9,235</b>	<b>1,422</b>	<b>189,224</b>	<b>86,900</b>	<b>75.6</b>	<b>23.0</b>
<b>ASEAN</b>	<b>81,658</b>	<b>99,051</b>	<b>2,463</b>	<b>617</b>	<b>102,131</b>	<b>46,043</b>	<b>40.8</b>	<b>25.1</b>
Brunei Darussalam	22	25	1	14	40	19	0.0	81.8
Indonesia	908	1,285	231	125	1,641	638	0.7	80.7
Lao PDR	9,313	12,289	2	28	12,319	8,559	4.9	32.3
Malaysia	6,903	8,862	413	19	9,294	3,343	3.7	34.6
Myanmar	198	278	36	6	320	137	0.1	61.6
Philippines	4,315	5,388	431	118	5,937	3,481	2.4	37.6
Singapore	3,033	3,165	145	12	3,322	1,065	1.3	9.5
Thailand	11,279	10,657	685	162	11,504	2,972	4.6	2.0
Vietnam	45,687	57,102	519	133	57,754	25,829	23.1	26.4
<b>Eastern Asia</b>	<b>61,827</b>	<b>70,520</b>	<b>5,938</b>	<b>547</b>	<b>77,005</b>	<b>37,052</b>	<b>30.7</b>	<b>24.5</b>
China (RPC)	15,658	18,693	3,623	160	22,476	10,672	9.0	43.5
Hong Kong SAR	329	274	23	0	297	132	0.1	-9.7
Japan	13,942	16,192	546	227	16,965	7,994	6.8	21.7
Korea (ROK)	24,406	27,547	1,061	157	28,765	14,439	11.5	17.9
Mongolia	28	15	1	3	19	9	0.0	-32.1
Taiwan, China	7,464	7,799	684	0	8,483	3,806	3.4	13.7
<b>Southern Asia</b>	<b>1,837</b>	<b>1,486</b>	<b>327</b>	<b>69</b>	<b>1,882</b>	<b>498</b>	<b>0.8</b>	<b>2.4</b>
Afghanistan	6	4	0	4	8	0	0.0	33.3
Bangladesh	294	80	16	4	100	10	0.0	-66.0
Bhutan		5	4	4	13	5	0.0	
India	1,213	1,183	252	38	1,473	403	0.6	21.4
Nepal	104	64	14	7	85	21	0.0	-18.3
Pakistan	94	39	30	5	74	9	0.0	-21.3
Srilanka	126	111	11	7	129	50	0.1	2.4
<b>Western Asia</b>	<b>0</b>	<b>99</b>	<b>15</b>	<b>0</b>	<b>114</b>	<b>79</b>	<b>0.0</b>	
Kazakhstan		36	12	0	48	26	0.0	
Uzbekistan		63	3	0	66	53	0.0	
<b>Oceania</b>	<b>8,104</b>	<b>7,154</b>	<b>479</b>	<b>175</b>	<b>7,808</b>	<b>3,132</b>	<b>3.1</b>	<b>-3.7</b>
Australia	7,228	6,062	412	152	6,626	2,683	2.6	-8.3
Fiji		3	1	1	5	2	0.0	
New Zealand	876	1,089	66	22	1,177	447	0.5	34.4
Other Asia & the Pacific	376	257	13	14	284	96	0.1	-24.5
<b>Europe</b>	<b>39,663</b>	<b>42,825</b>	<b>1,609</b>	<b>793</b>	<b>45,227</b>	<b>19,790</b>	<b>18.1</b>	<b>14.0</b>
<b>Northern Europe</b>	<b>10,103</b>	<b>10,225</b>	<b>490</b>	<b>177</b>	<b>10,892</b>	<b>4,399</b>	<b>4.3</b>	<b>7.8</b>
Denmark	370	337	15	6	358	122	0.1	-3.2
Finland	158	266	11	10	287	153	0.1	81.6
Iceland	11	16	0	1	17	4	0.0	54.5
Ireland	705	848	27	8	883	415	0.4	25.2
Norway	285	221	18	10	249	91	0.1	-12.6
Sweden	391	419	31	10	460	142	0.2	17.6
United Kingdom	8,183	8,118	388	132	8,638	3,472	3.4	5.6
<b>Western Europe</b>	<b>18,768</b>	<b>19,061</b>	<b>918</b>	<b>509</b>	<b>20,488</b>	<b>8,695</b>	<b>8.2</b>	<b>9.2</b>
Austria	484	501	16	17	534	227	0.2	10.3
Belgium	1,047	1,025	38	39	1,102	464	0.4	5.3
France	10,822	10,667	622	322	11,611	5,113	4.6	7.3
Germany	3,362	3,680	134	94	3,908	1,501	1.6	16.2
Luxembourg	77	60	1	0	61	31	0.0	-20.8
Monaco		1	0	0	1	1	0.0	
Netherlands	2,240	2,302	54	24	2,380	1,008	1.0	6.3
Switzerland	736	825	53	13	891	350	0.4	21.1
<b>Eastern Europe</b>	<b>2,340</b>	<b>4,007</b>	<b>91</b>	<b>37</b>	<b>4,135</b>	<b>2,193</b>	<b>1.7</b>	<b>76.7</b>
Bulgaria	17	19	0	0	19	9	0.0	11.8
Czech Republic	98	136	1	0	137	54	0.1	39.8
Estonia		10	2	2	14	5	0.0	
Hungary	76	70	1	1	72	36	0.0	-5.3
Lithuania		25	0	0	25	12	0.0	
Poland	422	415	5	1	421	200	0.2	-0.2
Romania	42	56	2	0	58	31	0.0	38.1
Russian Federation	1,467	2,992	66	31	3,089	1,696	1.2	110.6
Slovakia	39	57	3	0	60	23	0.0	53.8
Ukraine	179	227	11	2	240	127	0.1	34.1

Source: Statistics and ICT Department, MOT

## International Tourist Arrivals to Cambodia by Country of Residence in August 2011

(by all mean of transportations)

Regions Country of Residence	2010		2011			share		change	
			Purpose of Visit			Total	Female	(%)	(%)
			Tourists	Business	Other			2011*	2011*/10
<b>GRAND TOTAL</b>	<b>206,563</b>	<b>235,976</b>	<b>11,673</b>	<b>2,780</b>	<b>250,429</b>	<b>113,490</b>	<b>100.0</b>	<b>21.2</b>	
<b>Southern Europe</b>	<b>8,161</b>	<b>9,311</b>	<b>102</b>	<b>59</b>	<b>9,472</b>	<b>4,427</b>	<b>3.8</b>	<b>16.1</b>	
Croatia	28	31	0	0	31	17	0.0	10.7	
Greece	170	116	2	0	118	42	0.0	-30.6	
Italy	3,253	3,381	42	19	3,442	1,476	1.4	5.8	
Portugal	319	470	6	1	477	216	0.2	49.5	
Serbia		21	1	1	23	6	0.0		
Slovenia	35	43	0	0	43	19	0.0	22.9	
Spain	4,192	5,039	16	28	5,083	2,576	2.0	21.3	
Turkey	164	210	35	10	255	75	0.1	55.5	
Other Europe	291	221	8	11	240	76	0.1	-17.5	
<b>Americas</b>	<b>12,249</b>	<b>13,611</b>	<b>759</b>	<b>529</b>	<b>14,899</b>	<b>6,427</b>	<b>5.9</b>	<b>21.6</b>	
Argentina	118	2,024	1	4	2,029	1,096	0.8	1619.5	
Brazil	119	174	0	2	176	88	0.1	47.9	
Canada	1,805	2,143	139	49	2,331	998	0.9	29.1	
Chile	401	147	1	2	150	63	0.1	-62.6	
Colombia	60	109	14	1	124	45	0.0	106.7	
Costa Rica		10	1	0	11	7	0.0		
Ecuador		11	1	1	13	5	0.0		
Mexico	192	170	2	3	175	87	0.1	-8.9	
Peru	48	30	1	1	32	11	0.0	-33.3	
United States	9,213	8,631	595	458	9,684	3,955	3.9	5.1	
Uruguay	11	77	0	0	77	34	0.0	600.0	
Other Americas	282	85	4	8	97	38	0.0	-65.6	
<b>Africa</b>	<b>408</b>	<b>410</b>	<b>50</b>	<b>25</b>	<b>485</b>	<b>167</b>	<b>0.2</b>	<b>18.9</b>	
Cameroon	40	36	2	0	38	5	0.0	-5.0	
Congo		14	1	0	15	2	0.0		
Ghana	37	30	1	3	34	6	0.0	-8.1	
Kenya		22	1	9	32	10	0.0		
Liberia		21	0	0	21	2	0.0		
Nigeria	81	16	17	4	37	2	0.0	-54.3	
Sudan	2	3	0	1	4	0	0.0	100.0	
South Africa	224	217	25	4	246	101	0.1	9.8	
Uganda		38	2	0	40	31	0.0		
Other Africa	24	13	1	4	18	8	0.0	-25.0	
<b>Middle East</b>	<b>441</b>	<b>563</b>	<b>20</b>	<b>11</b>	<b>594</b>	<b>206</b>	<b>0.2</b>	<b>34.7</b>	
Egypt	10	9	1	2	12	1	0.0	20.0	
Iran	47	63	2	0	65	6	0.0	38.3	
Iraq		4	0	0	4	2	0.0		
Israel	332	425	17	6	448	188	0.2	34.9	
Kuwait	31	19	0	0	19	1	0.0	-38.7	
Oman		10	0	0	10	0	0.0		
Palestine		0	0	0	0	0	0.0		
Qatar		4	0	0	4	1	0.0		
Saudi Arabia	8	2	0	0	2	1	0.0	-75.0	
United Arab Emirates		17	0	0	17	2	0.0		
Yemen		4	0	0	4	1	0.0		
Other Middle East	13	6	0	3	9	3	0.0	-30.8	

### Remark:

- Cambodian Overseas:	6,375
- Cambodian Residence:	70,913
- Cambodian outbound tourist departures:	74,871
- International outbound tourist departures:	257,499



**COMPILED BY:**

1. Mr. Kong Sopheareak

Director  
Statistics & Tourism Information Department  
Fax: +855 23 885003  
E-mail: kong@mot.gov.kh

2. Mr. Horth Vanny

Chief of Tourism Statistics Office  
Compile and data analysis  
Tel.: +855 12 827664