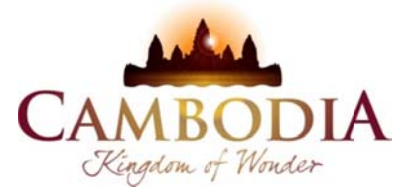




KINGDOM OF CAMBODIA
NATION RELIGION KING



TOURISM STATISTICS REPORT

September 2011

MINISTRY OF TOURISM

Statistics and Tourism Information Department

No. A3, Street 169, Sangkat Veal Vong, Khan 7 Makara, Phnom Penh, Cambodia.

Fax: +855 23 885003

E-mail: kong@mot.gov.kh

Web site: www.mot.gov.kh

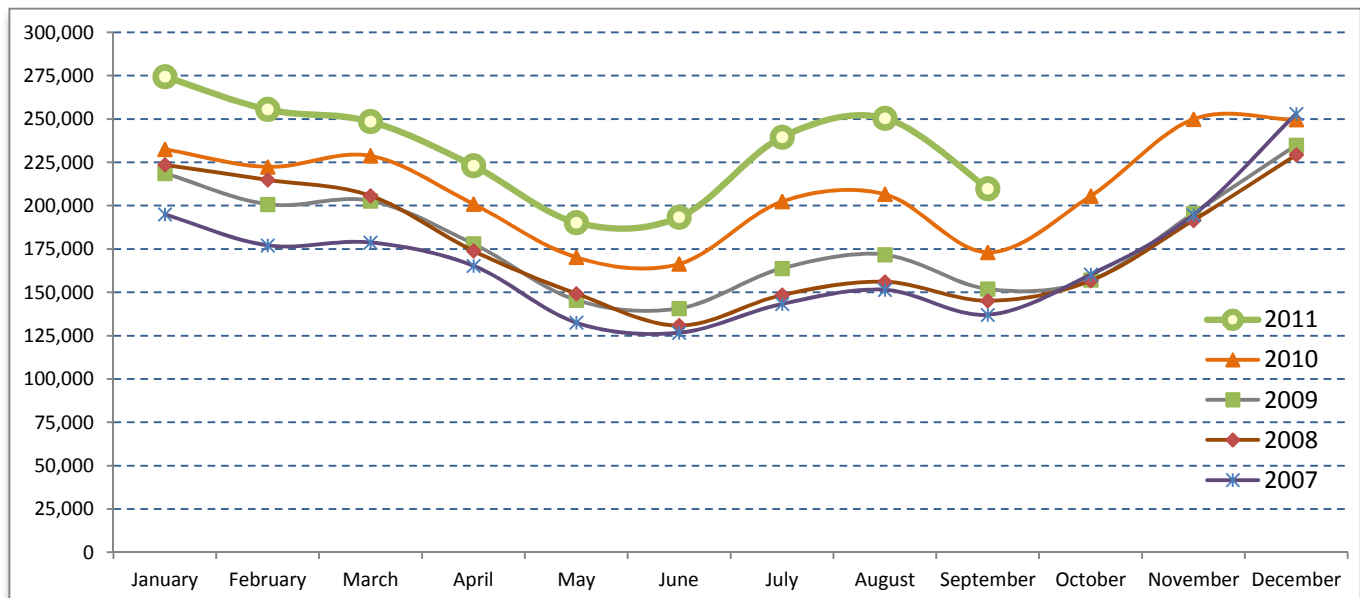
Tourism Highlights

International Tourist Arrivals, Average Length of Stay, Hotels Occupancy & Tourism Receipts 1993 - 2010

Years	Tourist Arrivals		Average Length of Stay (days)	Hotels Occupancy (%)	Tourism Receipts (million US\$)
	number	change (%)			
1993	118,183	-	N/A	N/A	N/A
1994	176,617	49.4%	N/A	N/A	N/A
1995	219,680	24.4%	8.00	37.00	100
1996	260,489	18.6%	7.50	40.00	118
1997	218,843	-16.0%	6.40	30.00	103
1998	289,524	32.3%	5.20	40.00	166
1999	367,743	27.0%	5.50	44.00	190
2000	466,365	26.8%	5.50	45.00	228
2001	604,919	29.7%	5.50	48.00	304
2002	786,524	30.0%	5.80	50.00	379
2003	701,014	-10.9%	5.50	50.00	347
2004	1,055,202	50.5%	6.30	52.00	578
2005	1,421,615	34.7%	6.30	52.00	832
2006	1,700,041	19.6%	6.50	54.79	1,049
2007	2,015,128	18.5%	6.50	54.79	1,400
2008	2,125,465	5.5%	6.65	62.68	1,595
2009	2,161,577	1.7%	6.45	63.57	1,561
2010	2,508,289	16.0%	6.45	65.74	1,786

International tourist arrivals to Cambodia

Destination	Months	2007	2008	2009	2010	2011	change (%) 2011*/10
Cambodia	Q1	550,813	644,205	622,288	683,692	778,467	13.9
<i>International tourist arrivals</i>	January	194,932	223,581	218,691	232,590	274,471	18.0
<i>by all means of</i>	February	177,130	214,902	200,789	222,354	255,499	14.9
<i>transportations</i>	March	178,751	205,722	202,808	228,748	248,497	8.6
	Q2	424,536	454,031	464,230	537,464	606,562	12.9
	April	165,347	173,903	177,955	200,965	223,032	11.0
	May	132,512	149,275	145,564	170,164	190,258	11.8
	June	126,677	130,853	140,711	166,335	193,272	16.2
	Q3	431,815	449,693	487,422	582,024	699,760	20.2
	July	143,310	148,449	163,817	202,349	239,527	18.4
	August	151,478	156,098	171,668	206,563	250,429	21.2
	September	137,027	145,146	151,937	173,112	209,804	21.2
	Q4	607,964	577,536	587,637	705,109	0	
	October	160,235	156,718	157,105	205,515		
	November	194,646	191,549	195,570	249,892		
	December	253,083	229,269	234,962	249,702		
	Total	2,015,128	2,125,465	2,161,577	2,508,289	2,084,789	15.6%



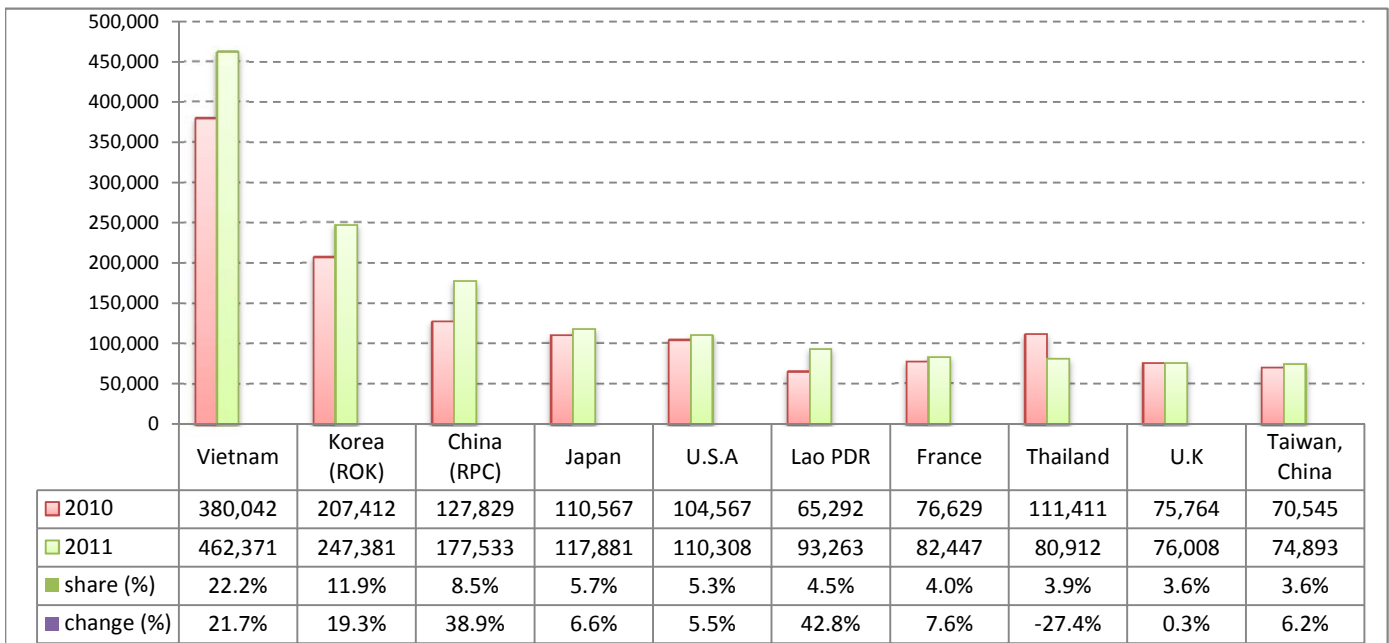
Executive Summary Report in the First Nine Months of 2011

I. International tourist arrivals to Cambodia in January - September was: **2,084,789**

II. Mode of arrivals

	visitors	share (%)
Air	1,049,660	50.3
Phnom Penh Int'l Airport	467,995	22.4
Siem Reap Int'l Airport	581,665	27.9
Land and Water ways	1,035,129	49.7
Land	975,127	46.8
Water ways	60,002	2.9
Total	2,084,789	100.0

III. Top ten markets arrivals in January - September 2011



IV. International tourist arrivals to Cambodia in January - September 2011

	Inbound		share (%)		change (%)
	2010	2011	2010	2011	2011*/10
Air	920,627	1,049,660	51.1	50.3	14.0
Phnom Penh Int'l Airport	421,930	467,995	23.4	22.4	10.9
Siem Reap Int'l Airport	498,697	581,665	27.7	27.9	16.6
Land and Water ways	882,553	1,035,129	48.9	49.7	17.3
Land	825,573	975,127	45.8	46.8	18.1
Water ways	56,980	60,002	3.2	2.9	5.3
Total	1,803,180	2,084,789	100.0	100.0	15.6

V. Remark: Percentage share of international tourist arrivals at destinations in January - September 2011

	Arrivals		share (%)		change (%)
	2010	2011	2010	2011	2011*/10
Phnom Penh & Other Destinations	875,007	917,685	48.5	44.0	4.9
Siem Reap Province	928,173	1,167,104	51.5	56.0	25.7
Total	1,803,180	2,084,789	100.0	100.0	15.6

VI. Outbound tourists departures in January - September 2011

	Outbound		change (%)
	2010	2011	2011*/10
Cambodian outbound tourists	367,295	509,183	38.6
International outbound tourists	1,705,608	2,083,079	22.1

International Tourist Arrivals to Cambodia by Country of Residence in January - September 2011

(by all mean of transportations)

Regions Country of Residence	2010	2011			Total	Female	share	change
		Purpose of Visit					(%)	(%)
		Tourists	Business	Other			2011*	2011*/10
GRAND TOTAL	1,803,180	1,854,585	104,247	22,169	2,084,789	934,394	100.0	15.6
Asia and the Pacific	1,315,530	1,436,111	86,946	12,246	1,535,303	704,985	73.6	16.7
ASEAN	701,275	776,478	25,653	5,664	807,795	368,305	38.7	15.2
Brunei Darussalam	366	255	12	89	356	145	0.0	-2.7
Indonesia	9,084	8,716	2,244	434	11,394	4,392	0.5	25.4
Lao PDR	65,292	92,661	112	490	93,263	62,794	4.5	42.8
Malaysia	60,830	69,231	4,751	209	74,191	26,068	3.6	22.0
Myanmar	1,925	2,607	334	90	3,031	1,287	0.1	57.5
Philippines	41,238	44,377	4,042	831	49,250	29,511	2.4	19.4
Singapore	31,087	31,269	1,575	183	33,027	12,313	1.6	6.2
Thailand	111,411	72,367	7,278	1,267	80,912	27,089	3.9	-27.4
Vietnam	380,042	454,995	5,305	2,071	462,371	204,706	22.2	21.7
Eastern Asia	519,795	563,443	54,300	4,155	621,898	294,316	29.8	19.6
China (RPC)	127,829	144,094	32,424	1,015	177,533	80,495	8.5	38.9
Hong Kong SAR	3,222	3,810	204	9	4,023	1,857	0.2	24.9
Japan	110,567	112,023	4,243	1,615	117,881	54,775	5.7	6.6
Korea (ROK)	207,412	235,566	10,341	1,474	247,381	122,601	11.9	19.3
Mongolia	220	155	10	22	187	98	0.0	-15.0
Taiwan, China	70,545	67,795	7,078	20	74,893	34,490	3.6	6.2
Southern Asia	13,386	11,053	2,483	718	14,254	3,621	0.7	6.5
Afghanistan	159	71	7	21	99	17	0.0	-37.7
Bangladesh	1,296	702	167	96	965	103	0.0	-25.5
Bhutan		39	6	21	66	22	0.0	
India	9,646	8,713	1,666	357	10,736	2,967	0.5	11.3
Nepal	729	539	174	76	789	175	0.0	8.2
Pakistan	760	417	293	81	791	151	0.0	4.1
Sri Lanka	796	572	170	66	808	186	0.0	1.5
Western Asia	0	1,394	107	10	1,511	841	0.1	
Kazakhstan		827	85	7	919	429	0.0	
Uzbekistan		567	22	3	592	412	0.0	
Oceania	77,994	78,874	4,283	1,542	84,699	36,690	4.1	8.6
Australia	68,170	68,364	3,650	1,371	73,385	32,230	3.5	7.6
Fiji		59	17	9	85	26	0.0	
New Zealand	9,824	10,451	616	162	11,229	4,434	0.5	14.3
Other Asia & the Pacific	3,080	4,869	120	157	5,146	1,212	0.2	67.1
Europe	335,619	263,693	9,375	5,021	381,877	159,150	18.3	13.8
Northern Europe	107,345	6,369	212	83	110,452	42,458	5.3	2.9
Denmark	5,921	6,669	244	93	7,006	2,846	0.3	18.3
Finland	3,803	4,341	164	132	4,637	1,725	0.2	21.9
Iceland	188	249	6	2	257	92	0.0	36.7
Ireland	6,267	5,976	202	90	6,268	2,526	0.3	0.0
Norway	5,761	5,745	226	76	6,047	2,450	0.3	5.0
Sweden	9,641	9,726	350	153	10,229	3,896	0.5	6.1
United Kingdom	75,764	71,629	3,315	1,064	76,008	28,923	3.6	0.3
Western Europe	160,212	158,452	7,296	3,963	169,711	68,782	8.1	5.9
Austria	5,753	5,116	116	74	5,306	2,060	0.3	-7.8
Belgium	9,805	9,186	351	251	9,788	3,949	0.5	-0.2
France	76,629	75,452	4,713	2,282	82,447	34,714	4.0	7.6
Germany	40,969	42,008	1,173	892	44,073	17,036	2.1	7.6
Luxembourg	446	342	8	15	365	152	0.0	-18.2
Monaco		55	0	3	58	25	0.0	
Netherlands	16,522	15,490	513	277	16,280	6,351	0.8	-1.5
Switzerland	10,088	10,803	422	169	11,394	4,495	0.5	12.9
Eastern Europe	33,180	58,990	866	280	60,136	31,397	2.9	81.2
Bulgaria	332	261	6	10	277	140	0.0	-16.6
Czech Republic	1,973	2,177	28	10	2,215	935	0.1	12.3
Estonia		600	14	11	625	236	0.0	
Hungary	2,028	1,807	53	12	1,872	856	0.1	-7.7
Lithuania		964	7	1	972	518	0.0	
Poland	5,079	5,557	40	52	5,649	2,853	0.3	11.2
Romania	908	665	15	7	687	371	0.0	-24.3
Russian Federation	20,343	43,468	591	135	44,194	23,574	2.1	117.2
Slovakia	734	818	21	28	867	369	0.0	18.1
Ukraine	1,783	2,673	91	14	2,778	1,545	0.1	55.8

International Tourist Arrivals to Cambodia by Country of Residence in January - September 2011

(by all mean of transportations)

Regions Country of Residence	2010		2011			share		change	
			Purpose of Visit			Total	Female	(%)	(%)
			Tourists	Business	Other			2011*	2011*/10
GRAND TOTAL	1,803,180	1,854,585	104,247	22,169	2,084,789	934,394	100.0	15.6	
Southern Europe	32,319	35,530	918	573	37,021	15,547	1.8	14.5	
Croatia	302	293	21	7	321	118	0.0	6.3	
Greece	1,081	840	23	7	870	326	0.0	-19.5	
Italy	13,757	14,421	395	205	15,021	5,686	0.7	9.2	
Portugal	1,665	2,082	33	25	2,140	1,019	0.1	28.5	
Serbia		267	7	12	286	120	0.0		
Slovenia	468	510	11	5	526	222	0.0	12.4	
Spain	13,631	15,279	251	204	15,734	7,422	0.8	15.4	
Turkey	1,415	1,838	177	108	2,123	634	0.1	50.0	
Other Europe	2,563	4,352	83	122	4,557	966	0.2	77.8	
Americas	142,580	144,811	7,353	4,624	156,788	66,632	7.5	10.0	
Argentina	1,643	4,346	21	32	4,399	2,258	0.2	167.7	
Brazil	1,700	2,418	25	45	2,488	1,188	0.1	46.4	
Canada	27,511	28,558	1,373	402	30,333	13,319	1.5	10.3	
Chile	1,762	1,785	48	21	1,854	866	0.1	5.2	
Colombia	758	1,683	36	16	1,735	840	0.1	128.9	
Costa Rica		151	10	6	167	98	0.0		
Ecuador		113	5	3	121	64	0.0		
Mexico	2,246	2,336	41	18	2,395	1,148	0.1	6.6	
Peru	312	337	6	16	359	161	0.0	15.1	
United States	104,567	100,627	5,723	3,958	110,308	45,644	5.3	5.5	
Uruguay	281	483	3	8	494	277	0.0	75.8	
Other Americas	1,800	1,974	62	99	2,135	769	0.1	18.6	
Africa	3,457	3,866	395	168	4,429	1,563	0.2	28.1	
Cameroon	391	319	6	10	335	65	0.0	-14.3	
Congo		124	1	5	130	26	0.0		
Ghana	390	323	16	18	357	49	0.0	-8.5	
Kenya		161	8	35	204	93	0.0		
Liberia		313	3	0	316	62	0.0		
Nigeria	596	180	201	15	396	54	0.0	-33.6	
Sudan	29	24	1	3	28	12	0.0	-3.4	
South Africa	1,757	1,949	146	29	2,124	896	0.1	20.9	
Uganda		263	3	9	275	198	0.0		
Other Africa	294	210	10	44	264	108	0.0	-10.2	
Middle East	5,994	6,104	178	110	6,392	2,064	0.3	6.6	
Egypt	165	106	10	18	134	26	0.0	-18.8	
Iran	397	523	10	4	537	82	0.0	35.3	
Iraq		58	3	12	73	16	0.0		
Israel	4,772	4,450	140	31	4,621	1,793	0.2	-3.2	
Kuwait	412	420	0	1	421	8	0.0	2.2	
Oman		84	0	5	89	10	0.0		
Palestine		22	2	0	24	3	0.0		
Qatar		54	0	0	54	23	0.0		
Saudi Arabia	54	43	3	4	50	14	0.0	-7.4	
United Arab Emirates		133	0	1	134	15	0.0		
Yemen		66	6	5	77	12	0.0		
Other Middle East	194	145	4	29	178	62	0.0	-8.2	

Remark:

- Cambodian Overseas:	57,216
- Cambodian Residence:	462,414
- Cambodian outbound tourist departures:	509,183
- International outbound tourist departures:	2,083,079

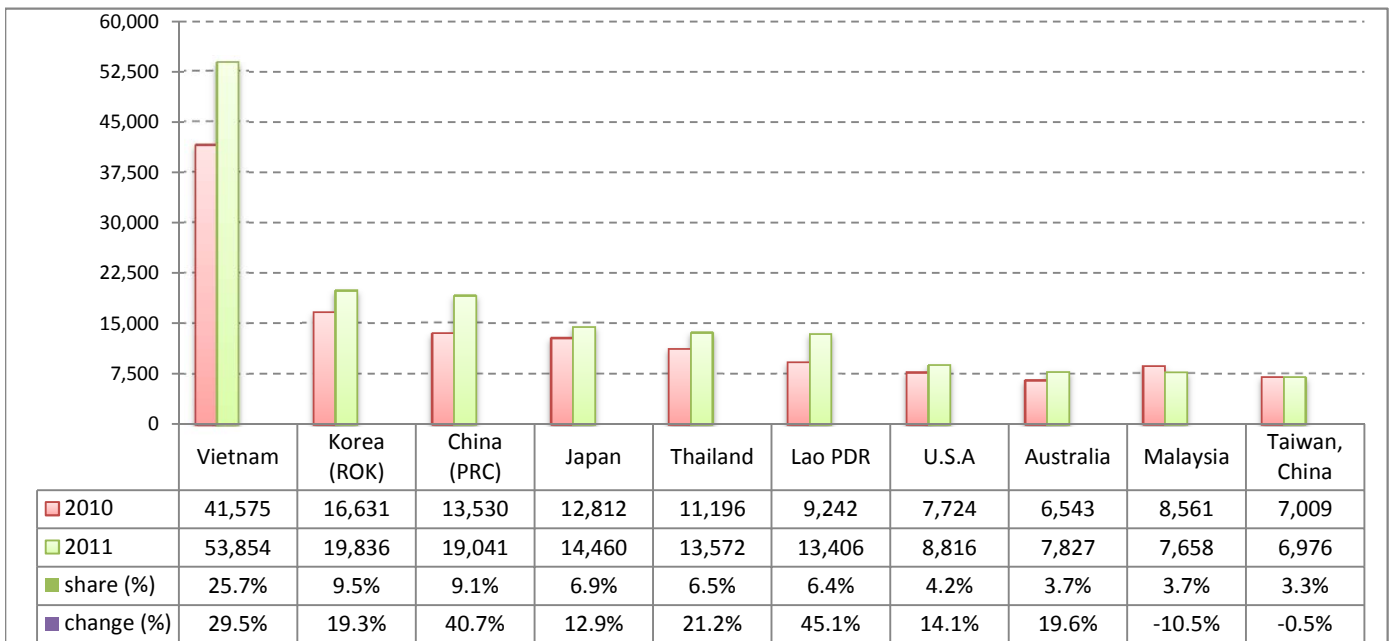
Executive Summary Report in September 2011

I. International tourist arrivals to Cambodia in September was: **209,804**

II. Mode of arrivals

	visitors	share (%)
Air	95,279	45.4
Phnom Penh Int'l Airport	45,474	21.7
Siem Reap Int'l Airport	49,805	23.7
Land and Water ways	114,525	54.6
Land	110,301	52.6
Water ways	4,224	2.0
Total	209,804	100.0

III. Top ten markets arrivals in September 2011



IV. International tourist arrivals to Cambodia in September 2011

	Inbound		share (%)		change (%)
	2010	2011	2010	2011	2011*/10
Air	85,911	95,279	49.6	45.4	10.9
Phnom Penh Int'l Airport	40,723	45,474	23.5	21.7	11.7
Siem Reap Int'l Airport	45,188	49,805	26.1	23.7	10.2
Land and Water ways	87,201	114,525	50.4	54.6	31.3
Land	83,396	110,301	48.2	52.6	32.3
Water ways	3,805	4,224	2.2	2.0	11.0
Total	173,112	209,804	100.0	100.0	21.2

V. Remark: Percentage share of international tourist arrivals at destinations in September 2011

	Arrivals		share (%)		change (%)
	2010	2011	2010	2011	2011*/10
Phnom Penh & Other Destinations	87,812	90,932	50.7	43.3	3.6
Siem Reap Province	85,300	118,872	49.3	56.7	39.4
Total	173,112	209,804	100.0	100.0	21.2

VI. Outbound tourists departures in September 2011

	Outbound		change (%)
	2010	2011	2011*/10
Cambodian outbound tourists	45,822	77,264	68.6
International outbound tourists	159,720	215,979	35.2

International Tourist Arrivals to Cambodia by Country of Residence in September 2011

(by all mean of transportations)

Regions Country of Residence	2010	2011			Total	Female	share	change
		Purpose of Visit					(%)	(%)
		Tourists	Business	Other			2011*	2011*/10
GRAND TOTAL	173,112	194,485	12,701	2,618	209,804	95,320	100.0	21.2
Asia and the Pacific	139,899	159,898	10,302	1,332	171,532	80,341	81.8	22.6
ASEAN	80,014	96,709	2,724	603	100,036	46,464	47.7	25.0
Brunei Darussalam	27	28	0	6	34	13	0.0	25.9
Indonesia	1,410	1,040	258	50	1,348	486	0.6	-4.4
Lao PDR	9,242	13,284	14	108	13,406	9,383	6.4	45.1
Malaysia	8,561	7,076	568	14	7,658	2,607	3.7	-10.5
Myanmar	296	171	41	11	223	88	0.1	-24.7
Philippines	4,377	5,744	456	91	6,291	3,849	3.0	43.7
Singapore	3,330	3,446	199	5	3,650	1,315	1.7	9.6
Thailand	11,196	12,626	733	213	13,572	5,548	6.5	21.2
Vietnam	41,575	53,294	455	105	53,854	23,175	25.7	29.5
Eastern Asia	50,310	53,611	6,753	506	60,870	29,476	29.0	21.0
China (RPC)	13,530	14,695	4,220	126	19,041	8,305	9.1	40.7
Hong Kong SAR	316	520	24	2	546	264	0.3	72.8
Japan	12,812	13,718	556	186	14,460	6,930	6.9	12.9
Korea (ROK)	16,631	18,424	1,224	188	19,836	10,731	9.5	19.3
Mongolia	12	8	0	3	11	5	0.0	-8.3
Taiwan, China	7,009	6,246	729	1	6,976	3,241	3.3	-0.5
Southern Asia	1,541	1,144	336	81	1,561	323	0.7	1.3
Afghanistan	4	1	1	8	10	0	0.0	150.0
Bangladesh	161	115	30	8	153	12	0.1	-5.0
Bhutan		1	0	0	1	0	0.0	
India	1,112	870	214	42	1,126	269	0.5	1.3
Nepal	63	59	17	10	86	8	0.0	36.5
Pakistan	90	50	40	7	97	16	0.0	7.8
Srilanka	111	48	34	6	88	18	0.0	-20.7
Western Asia	0	102	12	0	114	65	0.1	
Kazakhstan		47	8	0	55	29	0.0	
Uzbekistan		55	4	0	59	36	0.0	
Oceania	7,697	8,167	462	108	8,737	3,862	4.2	13.5
Australia	6,543	7,338	398	91	7,827	3,522	3.7	19.6
Fiji		6	0	0	6	1	0.0	
New Zealand	1,154	823	64	17	904	339	0.4	-21.7
Other Asia & the Pacific	337	165	15	34	214	151	0.1	-36.5
Europe	21,845	23,400	1,554	646	25,600	9,995	12.2	17.2
Northern Europe	7,362	6,693	526	152	7,371	2,477	3.5	0.1
Denmark	288	300	32	10	342	103	0.2	18.8
Finland	208	143	22	12	177	50	0.1	-14.9
Iceland	16	9	0	1	10	7	0.0	-37.5
Ireland	533	485	16	13	514	204	0.2	-3.6
Norway	316	315	21	4	340	114	0.2	7.6
Sweden	366	398	39	23	460	137	0.2	25.7
United Kingdom	5,635	5,043	396	89	5,528	1,862	2.6	-1.9
Western Europe	9,367	9,054	796	381	10,231	3,753	4.9	9.2
Austria	281	252	13	1	266	90	0.1	-5.3
Belgium	620	556	48	30	634	236	0.3	2.3
France	4,082	3,961	501	226	4,688	1,768	2.2	14.8
Germany	2,786	2,715	128	82	2,925	1,081	1.4	5.0
Luxembourg	15	16	0	0	16	4	0.0	6.7
Monaco		1	0	0	1	1	0.0	
Netherlands	1,038	975	64	24	1,063	358	0.5	2.4
Switzerland	545	578	42	18	638	215	0.3	17.1
Eastern Europe	2,158	4,265	90	40	4,395	2,222	2.1	103.7
Bulgaria	28	19	1	1	21	9	0.0	-25.0
Czech Republic	104	120	1	3	124	59	0.1	19.2
Estonia		24	1	0	25	10	0.0	
Hungary	41	54	2	3	59	28	0.0	43.9
Lithuania		22	1	0	23	13	0.0	
Poland	312	464	2	6	472	220	0.2	51.3
Romania	36	21	2	0	23	14	0.0	-36.1
Russian Federation	1,444	3,221	62	23	3,306	1,700	1.6	128.9
Slovakia	65	49	6	4	59	20	0.0	-9.2
Ukraine	128	271	12	0	283	149	0.1	121.1

International Tourist Arrivals to Cambodia by Country of Residence in September 2011

(by all mean of transportations)

Regions Country of Residence	2010		2011			share		change	
			Purpose of Visit			Total	Female	(%)	(%)
			Tourists	Business	Other			2011*	2011*/10
GRAND TOTAL	173,112	194,485	12,701	2,618	209,804	95,320	100.0	21.2	
Southern Europe	2,634	3,264	133	43	3,440	1,446	1.6	30.6	
Croatia	9	12	2	0	14	3	0.0	55.6	
Greece	23	52	1	0	53	21	0.0	130.4	
Italy	627	682	44	19	745	238	0.4	18.8	
Portugal	121	191	5	1	197	92	0.1	62.8	
Serbia		15	1	2	18	7	0.0		
Slovenia	27	29	4	1	34	10	0.0	25.9	
Spain	1,676	2,117	31	16	2,164	1,025	1.0	29.1	
Turkey	151	166	45	4	215	50	0.1	42.4	
Other Europe	324	124	9	30	163	97	0.1	-49.7	
Americas	10,349	10,251	776	596	11,623	4,608	5.5	12.3	
Argentina	205	238	12	0	250	108	0.1	22.0	
Brazil	166	208	4	4	216	97	0.1	30.1	
Canada	1,578	1,517	123	35	1,675	672	0.8	6.1	
Chile	101	132	2	1	135	68	0.1	33.7	
Colombia	87	63	0	1	64	30	0.0	-26.4	
Costa Rica		13	0	1	14	7	0.0		
Ecuador		9	0	0	9	4	0.0		
Mexico	185	255	6	0	261	117	0.1	41.1	
Peru	32	43	1	5	49	22	0.0	53.1	
United States	7,724	7,671	621	524	8,816	3,408	4.2	14.1	
Uruguay	0	4	0	0	4	3	0.0		
Other Americas	271	98	7	25	130	72	0.1	-52.0	
Africa	334	348	41	25	414	170	0.2	24.0	
Cameroon	29	14	0	2	16	3	0.0	-44.8	
Congo		6	0	0	6	0	0.0		
Ghana	36	14	1	4	19	3	0.0	-47.2	
Kenya		6	1	2	9	4	0.0		
Liberia		3	0	0	3	1	0.0		
Nigeria	42	29	17	1	47	8	0.0	11.9	
Sudan	2	1	0	0	1	1	0.0	-50.0	
South Africa	192	232	20	5	257	116	0.1	33.9	
Uganda		28	1	0	29	17	0.0		
Other Africa	33	15	1	11	27	17	0.0	-18.2	
Middle East	685	588	28	19	635	206	0.3	-7.3	
Egypt	17	30	4	0	34	6	0.0	100.0	
Iran	62	56	0	0	56	14	0.0	-9.7	
Iraq		13	0	3	16	1	0.0		
Israel	535	396	22	7	425	168	0.2	-20.6	
Kuwait	41	41	0	1	42	1	0.0	2.4	
Oman		8	0	0	8	0	0.0		
Palestine		3	1	0	4	1	0.0		
Qatar		0	0	0	0	0	0.0		
Saudi Arabia	5	3	0	0	3	2	0.0	-40.0	
United Arab Emirates		25	0	0	25	3	0.0		
Yemen		2	0	1	3	1	0.0		
Other Middle East	25	11	1	7	19	9	0.0	-24.0	

Remark:

- Cambodian Overseas:	5,037
- Cambodian Residence:	72,097
- Cambodian outbound tourist departures:	77,264
- International outbound tourist departures:	215,979

COMPILED BY:

1. Mr. Kong Sopheareak

Director
Statistics & Tourism Information Department
Fax: +855 23 885003
E-mail: kong@mot.gov.kh

2. Mr. Horth Vanny

Chief of Tourism Statistics Office
Compile and data analysis
Tel.: +855 12 827664