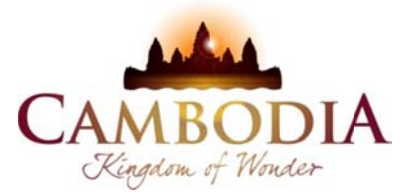




KINGDOM OF CAMBODIA
NATION RELIGION KING



TOURISM STATISTICS REPORT

November 2011

MINISTRY OF TOURISM

Statistics and Tourism Information Department

No. A3, Street 169, Sangkat Veal Vong, Khan 7 Makara, Phnom Penh, Cambodia.

Fax: +855 23 885003

E-mail: kong@mot.gov.kh

Web site: www.mot.gov.kh

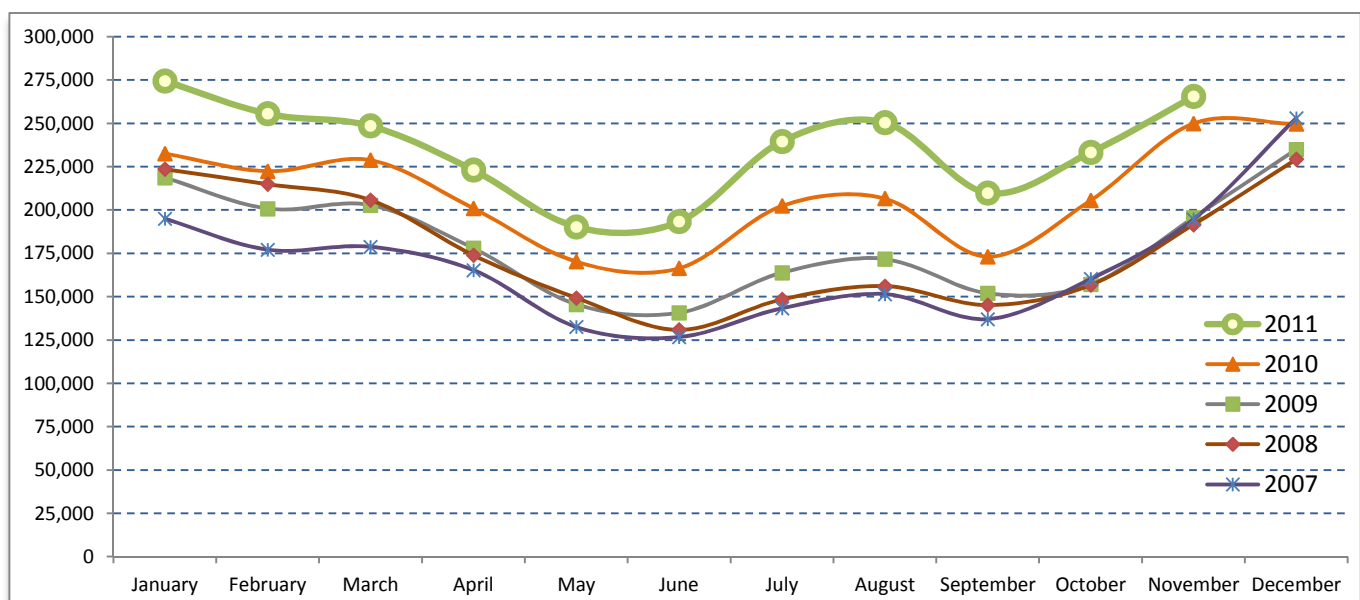
Tourism Highlights

International Tourist Arrivals, Average Length of Stay, Hotels Occupancy & Tourism Receipts 1993 - 2010

Years	Tourist Arrivals		Average Length	Hotels Occupancy	Tourism Receipts
	number	change (%)	of Stay (days)	(%)	(million US\$)
1993	118,183	-	N/A	N/A	N/A
1994	176,617	49.4%	N/A	N/A	N/A
1995	219,680	24.4%	8.00	37.00	100
1996	260,489	18.6%	7.50	40.00	118
1997	218,843	-16.0%	6.40	30.00	103
1998	286,524	30.9%	5.20	40.00	166
1999	367,743	28.3%	5.50	44.00	190
2000	466,365	26.8%	5.50	45.00	228
2001	604,919	29.7%	5.50	48.00	304
2002	786,524	30.0%	5.80	50.00	379
2003	701,014	-10.9%	5.50	50.00	347
2004	1,055,202	50.5%	6.30	52.00	578
2005	1,421,615	34.7%	6.30	52.00	832
2006	1,700,041	19.6%	6.50	54.79	1,049
2007	2,015,128	18.5%	6.50	54.79	1,400
2008	2,125,465	5.5%	6.65	62.68	1,595
2009	2,161,577	1.7%	6.45	63.57	1,561
2010	2,508,289	16.0%	6.45	65.74	1,786

International tourist arrivals to Cambodia

Destination	Months	2007	2008	2009	2010	2011	change (%) 2011*/10
Cambodia	Q1	550,813	644,205	622,288	683,692	778,467	13.9
<i>International tourist arrivals</i>	January	194,932	223,581	218,691	232,590	274,471	18.0
<i>by all means of</i>	February	177,130	214,902	200,789	222,354	255,499	14.9
<i>transportations</i>	March	178,751	205,722	202,808	228,748	248,497	8.6
	Q2	424,536	454,031	464,230	537,464	606,562	12.9
	April	165,347	173,903	177,955	200,965	223,032	11.0
	May	132,512	149,275	145,564	170,164	190,258	11.8
	June	126,677	130,853	140,711	166,335	193,272	16.2
	Q3	431,815	449,693	487,422	582,024	699,760	20.2
	July	143,310	148,449	163,817	202,349	239,527	18.4
	August	151,478	156,098	171,668	206,563	250,429	21.2
	September	137,027	145,146	151,937	173,112	209,804	21.2
	Q4	607,964	577,536	587,637	705,109	498,729	
	October	160,235	156,718	157,105	205,515	233,190	13.5
	November	194,646	191,549	195,570	249,892	265,539	6.3
	December	253,083	229,269	234,962	249,702		
	Total	2,015,128	2,125,465	2,161,577	2,508,289	2,583,518	14.4%



Source: Statistics and ICT Department, MOT

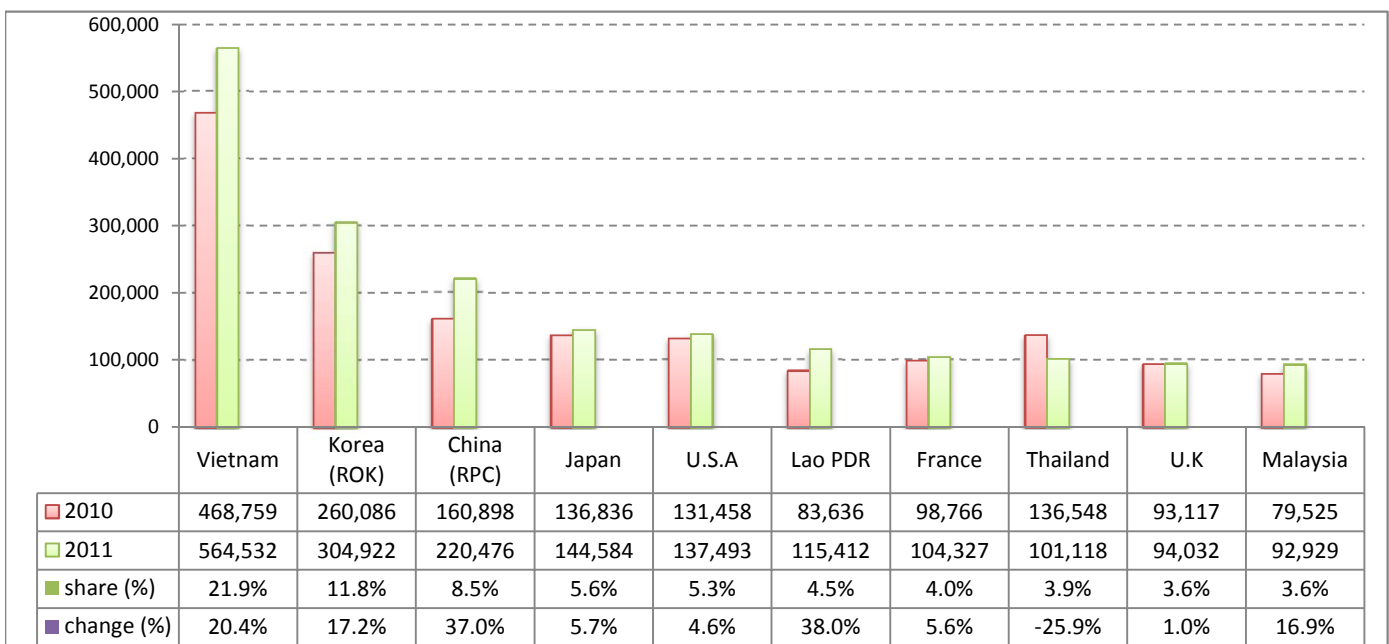
Executive Summary Report in the First Eleven Months of 2011

I. International tourist arrivals to Cambodia in January - November was: **2,583,518**

II. Mode of arrivals

	visitors	share (%)
Air	1,317,897	51.0
Phnom Penh Int'l Airport	582,459	22.5
Siem Reap Int'l Airport	735,438	28.5
Land and Water ways	1,265,621	49.0
Land	1,190,801	46.1
Water ways	74,820	2.9
Total	2,583,518	100.0

III. Top ten markets arrivals in January - November 2011



IV. International tourist arrivals to Cambodia in January - November 2011

	Inbound		share (%)		change (%)
	2010	2011	2010	2011	2011*/10
Air	1,167,178	1,317,897	51.7	51.0	12.9
Phnom Penh Int'l Airport	531,086	582,459	23.5	22.5	9.7
Siem Reap Int'l Airport	636,092	735,438	28.2	28.5	15.6
Land and Water ways	1,091,409	1,265,621	48.3	49.0	16.0
Land	1,020,322	1,190,801	45.2	46.1	16.7
Water ways	71,087	74,820	3.1	2.9	5.3
Total	2,258,587	2,583,518	100.0	100.0	14.4

V. Remark: Percentage share of international tourist arrivals at destinations in January - November 2011

	Arrivals		share (%)		change (%)
	2010	2011	2010	2011	2011*/10
Phnom Penh & Other Destinations	1,085,705	1,145,308	48.1	44.3	5.5
Siem Reap Province	1,172,882	1,438,210	51.9	55.7	22.6
Total	2,258,587	2,583,518	100.0	100.0	14.4

VI. Outbound tourists departures in January - November 2011

	Outbound		change (%)
	2010	2011	2011*/10
Cambodian outbound tourists	461,208	639,484	38.7
International outbound tourists	2,124,557	2,558,319	20.4

International Tourist Arrivals to Cambodia by Country of Residence in January - November 2011

(by all mean of transportations)

Regions Country of Residence	2010		2011			share		change	
			Purpose of Visit			Total	Female	(%)	(%)
			Tourists	Business	Other			2011*	2011*/10
GRAND TOTAL	2,258,587	2,421,767	132,588	29,163	2,583,518	1,160,944	100.0	14.4	
Asia and the Pacific	1,638,113	1,772,821	105,634	15,119	1,893,574	870,034	73.3	15.6	
ASEAN	873,891	959,182	30,863	6,925	996,970	452,439	38.6	14.1	
Brunei Darussalam	432	322	16	100	438	186	0.0	1.4	
Indonesia	11,375	10,859	2,693	488	14,040	5,344	0.5	23.4	
Lao PDR	83,636	114,707	133	572	115,412	78,481	4.5	38.0	
Malaysia	79,525	86,915	5,753	261	92,929	32,854	3.6	16.9	
Myanmar	2,372	3,178	420	125	3,723	1,551	0.1	57.0	
Philippines	51,278	57,244	4,925	1,000	63,169	38,034	2.4	23.2	
Singapore	39,966	39,543	1,869	197	41,609	15,622	1.6	4.1	
Thailand	136,548	90,874	8,678	1,566	101,118	34,552	3.9	-25.9	
Vietnam	468,759	555,540	6,376	2,616	564,532	245,815	21.9	20.4	
Eastern Asia	646,539	693,896	66,153	5,232	765,281	364,516	29.6	18.4	
China (RPC)	160,898	179,905	39,118	1,453	220,476	100,215	8.5	37.0	
Hong Kong SAR	3,952	4,559	249	9	4,817	2,243	0.2	21.9	
Japan	136,836	137,240	5,408	1,936	144,584	68,387	5.6	5.7	
Korea (ROK)	260,086	290,636	12,509	1,777	304,922	152,172	11.8	17.2	
Mongolia	272	188	12	26	226	117	0.0	-16.9	
Taiwan, China	84,495	81,368	8,857	31	90,256	41,382	3.5	6.8	
Southern Asia	16,907	13,843	3,014	874	17,731	4,526	0.7	4.9	
Afghanistan	173	75	8	28	111	18	0.0	-35.8	
Bangladesh	1,540	843	202	119	1,164	129	0.0	-24.4	
Bhutan		47	7	25	79	26	0.0		
India	12,280	10,914	2,008	422	13,344	3,721	0.5	8.7	
Nepal	964	721	203	102	1,026	222	0.0	6.4	
Pakistan	994	562	368	95	1,025	192	0.0	3.1	
Srilanka	956	681	218	83	982	218	0.0	2.7	
Western Asia	0	1,608	123	15	1,746	973	0.1		
Kazakhstan		969	99	11	1,079	502	0.0		
Uzbekistan		639	24	4	667	471	0.0		
Oceania	97,151	99,202	5,344	1,876	106,422	46,214	4.1	9.5	
Australia	84,766	86,057	4,546	1,671	92,274	40,596	3.6	8.9	
Fiji		68	23	12	103	31	0.0		
New Zealand	12,385	13,077	775	193	14,045	5,587	0.5	13.4	
Other Asia & the Pacific	3,625	5,090	137	197	5,424	1,366	0.2	49.6	
Europe	430,073	456,942	17,106	8,051	482,099	203,327	18.7	12.1	
Northern Europe	131,576	128,770	5,654	1,991	136,415	52,843	5.3	3.7	
Denmark	7,104	8,119	315	114	8,548	3,530	0.3	20.3	
Finland	4,675	5,242	218	168	5,628	2,144	0.2	20.4	
Iceland	214	304	9	3	316	115	0.0	47.7	
Ireland	7,759	7,407	249	110	7,766	3,139	0.3	0.1	
Norway	7,018	6,985	281	105	7,371	3,010	0.3	5.0	
Sweden	11,689	12,112	453	189	12,754	4,953	0.5	9.1	
United Kingdom	93,117	88,601	4,129	1,302	94,032	35,952	3.6	1.0	
Western Europe	207,998	200,732	9,137	4,826	214,695	87,570	8.3	3.2	
Austria	7,370	6,415	151	86	6,652	2,648	0.3	-9.7	
Belgium	12,583	11,691	445	297	12,433	4,973	0.5	-1.2	
France	98,766	95,670	5,853	2,804	104,327	44,001	4.0	5.6	
Germany	54,263	53,833	1,519	1,063	56,415	22,184	2.2	4.0	
Luxembourg	559	415	9	18	442	181	0.0	-20.9	
Monaco		77	0	3	80	38	0.0		
Netherlands	21,002	19,016	632	350	19,998	7,792	0.8	-4.8	
Switzerland	13,455	13,615	528	205	14,348	5,753	0.6	6.6	
Eastern Europe	46,026	77,443	1,054	337	78,834	41,627	3.1	71.3	
Bulgaria	405	373	9	15	397	198	0.0	-2.0	
Czech Republic	2,625	2,884	37	16	2,937	1,265	0.1	11.9	
Estonia		778	20	15	813	329	0.0		
Hungary	2,471	2,266	56	15	2,337	1,080	0.1	-5.4	
Lithuania		1,103	10	1	1,114	595	0.0		
Poland	7,185	8,087	53	59	8,199	4,144	0.3	14.1	
Romania	1,064	905	18	7	930	504	0.0	-12.6	
Russian Federation	28,802	56,695	714	158	57,567	31,212	2.2	99.9	
Slovakia	1,102	1,076	27	32	1,135	473	0.0	3.0	
Ukraine	2,372	3,276	110	19	3,405	1,827	0.1	43.5	

International Tourist Arrivals to Cambodia by Country of Residence in January - November 2011

(by all mean of transportations)

Regions Country of Residence	2010		2011			share		change	
			Purpose of Visit			Total	Female	(%)	(%)
			Tourists	Business	Other			2011*	2011*/10
GRAND TOTAL	2,258,587	2,421,767	132,588	29,163	2,583,518	1,160,944	100.0	14.4	
Southern Europe	41,426	45,480	1,164	744	47,388	20,225	1.8	14.4	
Croatia	396	414	25	10	449	176	0.0	13.4	
Greece	1,268	988	32	13	1,033	389	0.0	-18.5	
Italy	17,230	17,672	507	257	18,436	7,118	0.7	7.0	
Portugal	2,241	2,741	51	34	2,826	1,361	0.1	26.1	
Serbia		335	12	17	364	151	0.0		
Slovenia	606	683	19	10	712	306	0.0	17.5	
Spain	17,391	19,974	323	263	20,560	9,742	0.8	18.2	
Turkey	2,294	2,673	195	140	3,008	982	0.1	31.1	
Other Europe	3,047	4,517	97	153	4,767	1,062	0.2	56.4	
Americas	179,044	179,774	9,156	5,628	194,558	83,127	7.5	8.7	
Argentina	2,014	4,851	33	40	4,924	2,511	0.2	144.5	
Brazil	2,207	3,153	33	50	3,236	1,575	0.1	46.6	
Canada	34,543	35,840	1,698	520	38,058	16,767	1.5	10.2	
Chile	2,059	2,108	53	24	2,185	1,027	0.1	6.1	
Colombia	960	1,895	40	23	1,958	963	0.1	104.0	
Costa Rica		167	12	7	186	108	0.0		
Ecuador		145	12	6	163	83	0.0		
Mexico	2,864	3,040	53	26	3,119	1,521	0.1	8.9	
Peru	410	422	10	17	449	208	0.0	9.5	
United States	131,458	125,570	7,136	4,787	137,493	57,244	5.3	4.6	
Uruguay	316	495	3	8	506	281	0.0	60.1	
Other Americas	2,213	2,088	73	120	2,281	839	0.1	3.1	
Africa	4,223	4,586	465	222	5,273	1,836	0.2	24.9	
Cameroon	457	353	7	10	370	71	0.0	-19.0	
Congo		148	1	6	155	35	0.0		
Ghana	467	356	20	20	396	53	0.0	-15.2	
Kenya		195	10	46	251	117	0.0		
Liberia		325	3	0	328	65	0.0		
Nigeria	714	223	226	23	472	62	0.0	-33.9	
Sudan	35	31	2	12	45	15	0.0	28.6	
South Africa	2,209	2,455	179	36	2,670	1,097	0.1	20.9	
Uganda		269	3	17	289	203	0.0		
Other Africa	341	231	14	52	297	118	0.0	-12.9	
Middle East	7,134	7,644	227	143	8,014	2,620	0.3	12.3	
Egypt	197	137	11	22	170	33	0.0	-13.7	
Iran	480	622	12	4	638	102	0.0	32.9	
Iraq		66	3	18	87	19	0.0		
Israel	5,678	5,710	182	40	5,932	2,300	0.2	4.5	
Kuwait	493	498	0	1	499	12	0.0	1.2	
Oman		96	0	5	101	10	0.0		
Palestine		27	3	0	30	3	0.0		
Qatar		60	1	0	61	23	0.0		
Saudi Arabia	61	57	4	6	67	20	0.0	9.8	
United Arab Emirates		144	0	5	149	17	0.0		
Yemen		70	6	7	83	13	0.0		
Other Middle East	225	157	5	35	197	68	0.0	-12.4	

Remark:

- Cambodian Overseas:	71,084
- Cambodian Residence:	592,975
- Cambodian outbound tourist departures:	639,484
- International outbound tourist departures:	2,558,319

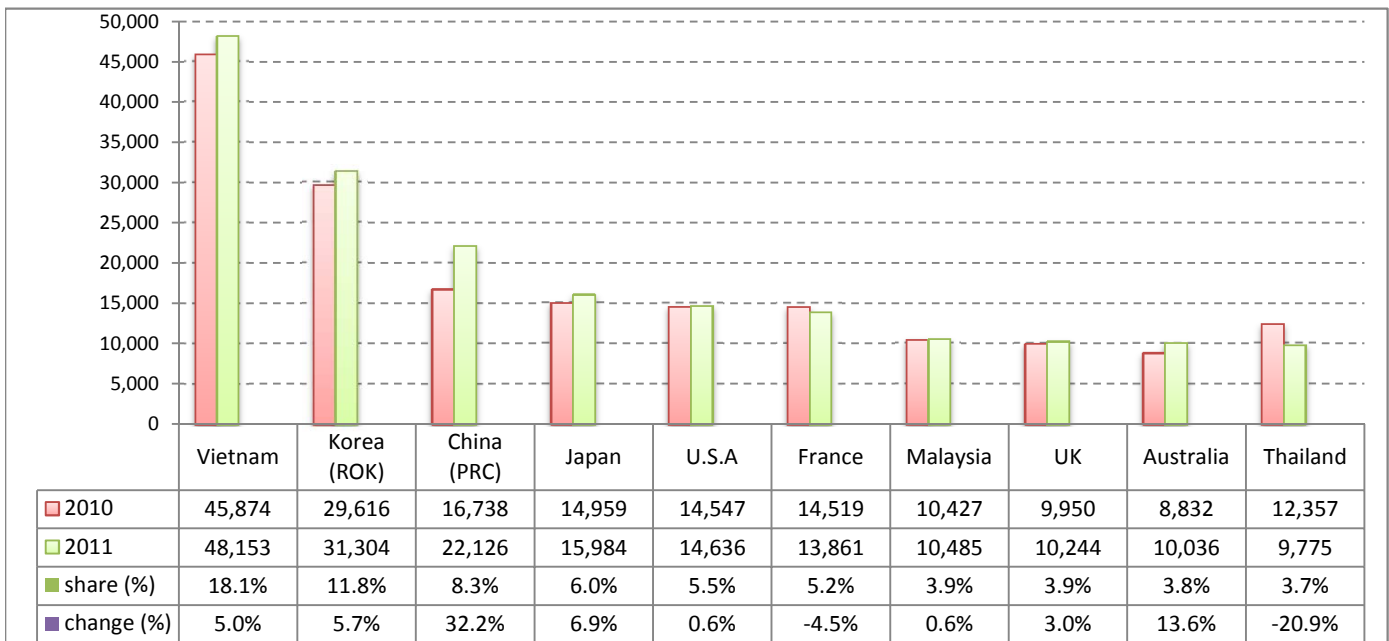
Executive Summary Report in November 2011

I. International tourist arrivals to Cambodia in November was: **265,539**

II. Mode of arrivals

	visitors	share (%)
Air	149,415	56.3
Phnom Penh Int'l Airport	61,005	23.0
Siem Reap Int'l Airport	88,410	33.3
Land and Water ways	116,124	43.7
Land	107,173	40.4
Water ways	8,951	3.4
Total	265,539	100.0

III. Top ten markets arrivals in November 2011



IV. International tourist arrivals to Cambodia in November 2011

	Inbound		share (%)		change (%)
	2010	2011	2010	2011	2011*/10
Air	138,750	149,415	55.5	56.3	7.7
Phnom Penh Int'l Airport	59,803	61,005	23.9	23.0	2.0
Siem Reap Int'l Airport	78,947	88,410	31.6	33.3	12.0
Land and Water ways	111,142	116,124	44.5	43.7	4.5
Land	103,049	107,173	41.2	40.4	4.0
Water ways	8,093	8,951	3.2	3.4	10.6
Total	249,892	265,539	100.0	100.0	6.3

V. Remark: Percentage share of international tourist arrivals at destinations in November 2011

	Arrivals		share (%)		change (%)
	2010	2011	2010	2011	2011*/10
Phnom Penh & Other Destinations	113,424	116,883	45.4	44.0	3.0
Siem Reap Province	136,468	148,656	54.6	56.0	8.9
Total	249,892	265,539	100.0	100.0	6.3

VI. Outbound tourists departures in November 2011

	Outbound		change (%)
	2010	2011	2011*/10
Cambodian outbound tourists	43,981	66,045	50.2
International outbound tourists	230,741	254,434	10.3

International Tourist Arrivals to Cambodia by Country of Residence in November 2011

(by all mean of transportations)

Regions Country of Residence	2010	2011			Total	Female	share	change
		Purpose of Visit					(%)	(%)
		Tourists	Business	Other			2011*	2011*/10
GRAND TOTAL	249,892	251,014	11,669	2,856	265,539	121,973	100.0	6.3
Asia and the Pacific	169,475	171,145	8,978	1,518	181,641	84,710	68.4	7.2
ASEAN	88,869	87,995	2,422	650	91,067	39,981	34.3	2.5
Brunei Darussalam	28	50	1	6	57	36	0.0	103.6
Indonesia	1,261	1,012	197	38	1,247	460	0.5	-1.1
Lao PDR	8,689	9,509	9	26	9,544	6,966	3.6	9.8
Malaysia	10,427	9,932	522	31	10,485	3,891	3.9	0.6
Myanmar	242	230	47	11	288	117	0.1	19.0
Philippines	4,878	5,958	402	72	6,432	3,897	2.4	31.9
Singapore	5,113	4,935	146	5	5,086	2,196	1.9	-0.5
Thailand	12,357	8,983	630	162	9,775	3,384	3.7	-20.9
Vietnam	45,874	47,386	468	299	48,153	19,034	18.1	5.0
Eastern Asia	68,506	70,655	5,750	593	76,998	39,042	29.0	12.4
China (RPC)	16,738	18,630	3,234	262	22,126	10,299	8.3	32.2
Hong Kong SAR	426	186	15	0	201	80	0.1	-52.8
Japan	14,959	15,257	577	150	15,984	8,713	6.0	6.9
Korea (ROK)	29,616	30,046	1,082	176	31,304	16,629	11.8	5.7
Mongolia	33	16	1	3	20	8	0.0	-39.4
Taiwan, China	6,734	6,520	841	2	7,363	3,313	2.8	9.3
Southern Asia	1,677	1,384	267	89	1,740	429	0.7	3.8
Afghanistan	7	4	1	4	9	0	0.0	28.6
Bangladesh	118	80	13	14	107	17	0.0	-9.3
Bhutan		4	0	3	7	1	0.0	
India	1,262	1,042	182	34	1,258	349	0.5	-0.3
Nepal	117	81	15	17	113	25	0.0	-3.4
Pakistan	98	102	36	6	144	23	0.1	46.9
Srilanka	75	71	20	11	102	14	0.0	36.0
Western Asia	0	103	7	4	114	60	0.0	
Kazakhstan		76	6	3	85	38	0.0	
Uzbekistan		27	1	1	29	22	0.0	
Oceania	10,155	10,903	523	156	11,582	5,111	4.4	14.1
Australia	8,832	9,447	445	144	10,036	4,456	3.8	13.6
Fiji		5	5	2	12	2	0.0	
New Zealand	1,323	1,451	73	10	1,534	653	0.6	15.9
Other Asia & the Pacific	268	105	9	26	140	87	0.1	-47.8
Europe	59,327	59,468	1,765	782	62,015	27,722	23.4	4.5
Northern Europe	14,191	14,366	542	203	15,111	6,114	5.7	6.5
Denmark	706	850	38	16	904	408	0.3	28.0
Finland	569	622	30	24	676	287	0.3	18.8
Iceland	15	39	2	1	42	15	0.0	180.0
Ireland	808	768	18	10	796	308	0.3	-1.5
Norway	756	801	23	17	841	376	0.3	11.2
Sweden	1,387	1,549	42	17	1,608	700	0.6	15.9
United Kingdom	9,950	9,737	389	118	10,244	4,020	3.9	3.0
Western Europe	30,814	27,040	996	421	28,457	12,309	10.7	-7.6
Austria	1,177	872	10	9	891	398	0.3	-24.3
Belgium	1,712	1,645	53	22	1,720	666	0.6	0.5
France	14,519	12,995	627	239	13,861	6,149	5.2	-4.5
Germany	8,601	7,645	196	86	7,927	3,390	3.0	-7.8
Luxembourg	80	37	1	2	40	15	0.0	-50.0
Monaco		10	0	0	10	5	0.0	
Netherlands	2,535	1,936	55	40	2,031	820	0.8	-19.9
Switzerland	2,190	1,900	54	23	1,977	866	0.7	-9.7
Eastern Europe	8,375	12,171	93	30	12,294	6,510	4.6	46.8
Bulgaria	40	59	1	1	61	30	0.0	52.5
Czech Republic	488	546	7	1	554	252	0.2	13.5
Estonia		140	4	3	147	77	0.1	
Hungary	269	316	2	1	319	168	0.1	18.6
Lithuania		92	1	0	93	52	0.0	
Poland	1,527	1,848	7	4	1,859	951	0.7	21.7
Romania	107	134	0	0	134	67	0.1	25.2
Russian Federation	5,368	8,493	60	15	8,568	4,668	3.2	59.6
Slovakia	184	176	5	2	183	73	0.1	-0.5
Ukraine	392	367	6	3	376	172	0.1	-4.1

International Tourist Arrivals to Cambodia by Country of Residence in November 2011

(by all mean of transportations)

Regions Country of Residence	2010		2011			share		change	
			Purpose of Visit			Total	Female	(%)	(%)
			Tourists	Business	Other			2011*	2011*/10
GRAND TOTAL	249,892	251,014	11,669	2,856	265,539	121,973	100.0	6.3	
Southern Europe	5,708	5,812	126	108	6,046	2,736	2.3	5.9	
Croatia	74	68	4	3	75	33	0.0	1.4	
Greece	127	51	4	2	57	12	0.0	-55.1	
Italy	2,578	2,290	57	28	2,375	1,067	0.9	-7.9	
Portugal	313	354	11	7	372	175	0.1	18.8	
Serbia		39	2	4	45	20	0.0		
Slovenia	86	98	4	1	103	45	0.0	19.8	
Spain	1,772	2,196	32	33	2,261	1,066	0.9	27.6	
Turkey	758	716	12	30	758	318	0.3	0.0	
Other Europe	239	79	8	20	107	53	0.0	-55.2	
Americas	20,045	19,382	881	494	20,757	9,187	7.8	3.6	
Argentina	198	324	3	4	331	161	0.1	67.2	
Brazil	283	374	4	2	380	180	0.1	34.3	
Canada	4,175	4,332	183	63	4,578	2,090	1.7	9.7	
Chile	181	165	3	1	169	84	0.1	-6.6	
Colombia	100	121	1	4	126	72	0.0	26.0	
Costa Rica		7	0	1	8	7	0.0		
Ecuador		18	7	3	28	13	0.0		
Mexico	293	372	4	6	382	187	0.1	30.4	
Peru	58	44	2	1	47	19	0.0	-19.0	
United States	14,547	13,571	668	397	14,636	6,340	5.5	0.6	
Uruguay	17	7	0	0	7	2	0.0		
Other Americas	193	47	6	12	65	32	0.0	-66.3	
Africa	404	367	25	37	429	131	0.2	6.2	
Cameroon	36	17	0	0	17	2	0.0	-52.8	
Congo		12	0	0	12	1	0.0		
Ghana	36	10	0	1	11	0	0.0	-69.4	
Kenya		14	1	3	18	8	0.0		
Liberia		7	0	0	7	1	0.0		
Nigeria	55	21	10	8	39	3	0.0	-29.1	
Sudan	2	4	1	8	13	3	0.0	550.0	
South Africa	250	269	11	7	287	103	0.1	14.8	
Uganda		5	0	6	11	4	0.0		
Other Africa	25	8	2	4	14	6	0.0	-44.0	
Middle East	641	652	20	25	697	223	0.3	8.7	
Egypt	23	12	0	1	13	4	0.0	-43.5	
Iran	38	41	0	0	41	6	0.0	7.9	
Iraq		6	0	6	12	3	0.0		
Israel	508	526	20	7	553	203	0.2	8.9	
Kuwait	50	40	0	0	40	0	0.0	-20.0	
Oman		4	0	0	4	0	0.0		
Palestine		2	0	0	2	0	0.0		
Qatar		4	0	0	4	0	0.0		
Saudi Arabia	3	4	0	2	6	1	0.0	100.0	
United Arab Emirates		8	0	4	12	2	0.0		
Yemen		1	0	2	3	1	0.0		
Other Middle East	19	4	0	3	7	3	0.0	-63.2	

Remark:

- Cambodian Overseas:	7,662
- Cambodian Residence:	68,447
- Cambodian outbound tourist departures:	66,045
- International outbound tourist departures:	254,434

COMPILED BY:

1. Mr. Kong Sopheareak

Director
Statistics & Tourism Information Department
Fax: +855 23 885003
E-mail: kong@mot.gov.kh

2. Mr. Horth Vanny

Chief of Tourism Statistics Office
Compile and data analysis
Tel.: +855 12 827664