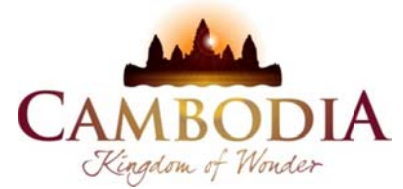




KINGDOM OF CAMBODIA
NATION RELIGION KING



TOURISM STATISTICS REPORT

First Semester 2011

MINISTRY OF TOURISM

Statistics and Tourism Information Department

No. A3, Street 169, Sangkat Veal Vong, Khan 7 Makara, Phnom Penh, Cambodia.

Fax: +855 23 885003

E-mail: kong@mot.gov.kh

Web site: www.mot.gov.kh

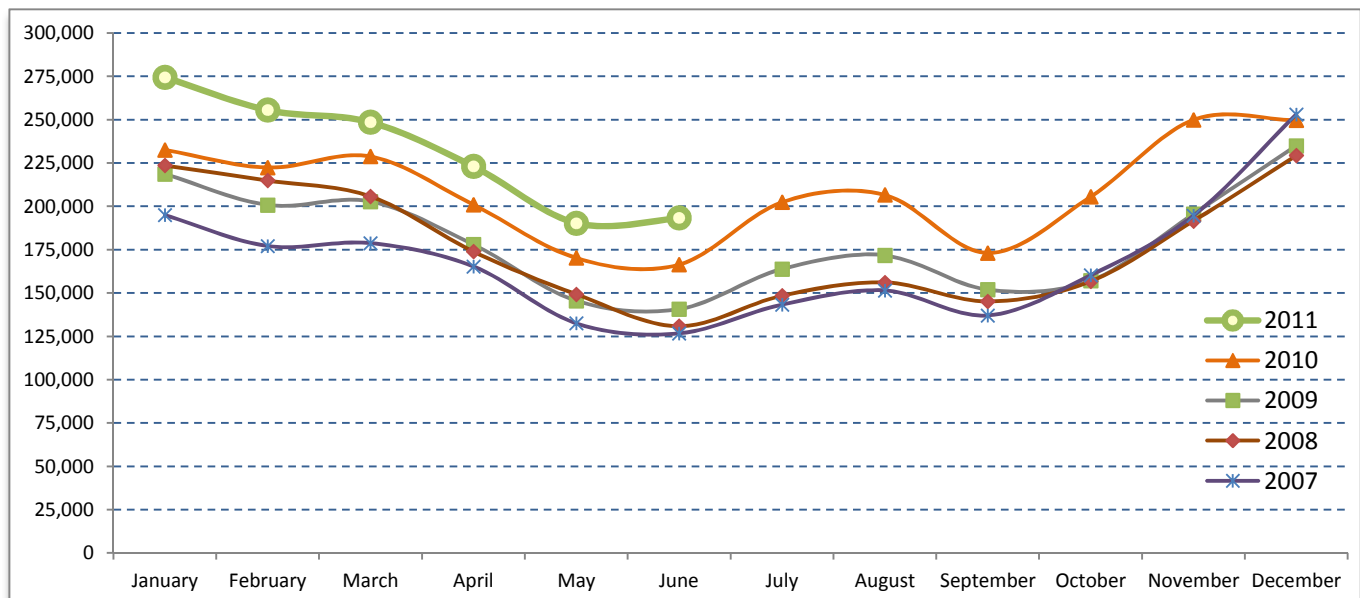
Tourism Highlights

International Tourist Arrivals, Average Length of Stay, Hotels Occupancy & Tourism Receipts 1993 - 2010

Years	Tourist Arrivals		Average Length	Hotels Occupancy	Tourism Receipts
	number	change (%)	of Stay (days)	(%)	(million US\$)
1993	118,183	-	N/A	N/A	N/A
1994	176,617	49.4%	N/A	N/A	N/A
1995	219,680	24.4%	8.00	37.00	100
1996	260,489	18.6%	7.50	40.00	118
1997	218,843	-16.0%	6.40	30.00	103
1998	289,524	32.3%	5.20	40.00	166
1999	367,743	27.0%	5.50	44.00	190
2000	466,365	26.8%	5.50	45.00	228
2001	604,919	29.7%	5.50	48.00	304
2002	786,524	30.0%	5.80	50.00	379
2003	701,014	-10.9%	5.50	50.00	347
2004	1,055,202	50.5%	6.30	52.00	578
2005	1,421,615	34.7%	6.30	52.00	832
2006	1,700,041	19.6%	6.50	54.79	1,049
2007	2,015,128	18.5%	6.50	54.79	1,400
2008	2,125,465	5.5%	6.65	62.68	1,595
2009	2,161,577	1.7%	6.45	63.57	1,561
2010	2,508,289	16.0%	6.45	65.74	1,786

International tourist arrivals to Cambodia

Destination	Months	2007	2008	2009	2010	2011	change (%) 2011*/10
Cambodia	Q1	550,813	644,205	622,288	683,692	778,467	13.9
<i>International tourist arrivals</i>	January	194,932	223,581	218,691	232,590	274,471	18.0
<i>by all means of</i>	February	177,130	214,902	200,789	222,354	255,499	14.9
<i>transportations</i>	March	178,751	205,722	202,808	228,748	248,497	8.6
	Q2	424,536	454,031	464,230	537,464	606,562	12.9
	April	165,347	173,903	177,955	200,965	223,032	11.0
	May	132,512	149,275	145,564	170,164	190,258	11.8
	June	126,677	130,853	140,711	166,335	193,272	16.2
	Q3	431,815	449,693	487,422	582,024	0	
	July	143,310	148,449	163,817	202,349		
	August	151,478	156,098	171,668	206,563		
	September	137,027	145,146	151,937	173,112		
	Q4	607,964	577,536	587,637	705,109	0	
	October	160,235	156,718	157,105	205,515		
	November	194,646	191,549	195,570	249,892		
	December	253,083	229,269	234,962	249,702		
	Total	2,015,128	2,125,465	2,161,577	2,508,289	1,385,029	13.4%



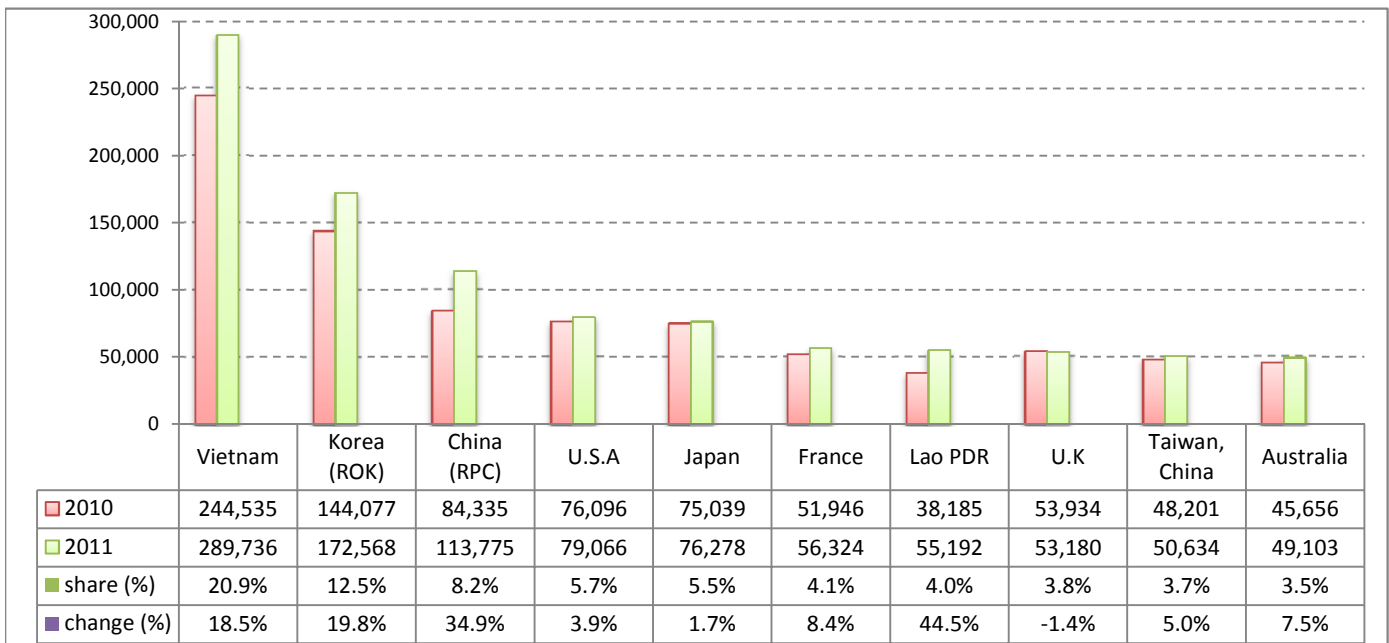
Executive Summary Report in the First Semester of 2011

I. International tourist arrivals to Cambodia in January - June was: **1,385,029**

II. Mode of arrivals

	visitors	share (%)
Air	714,373	51.6
Phnom Penh Int'l Airport	310,464	22.4
Siem Reap Int'l Airport	403,909	29.2
Land and Water ways	670,656	48.4
Land	629,537	45.5
Water ways	41,119	3.0
Total	1,385,029	100.0

III. Top ten markets arrivals in January - June 2011



IV. International tourist arrivals to Cambodia in January - June 2011

	Inbound		share (%)		change (%)
	2010	2011	2010	2011	2011*/10
Air	632,373	714,373	51.8	51.6	13.0
Phnom Penh Int'l Airport	284,991	310,464	23.3	22.4	8.9
Siem Reap Int'l Airport	347,382	403,909	28.4	29.2	16.3
Land and Water ways	588,783	670,656	48.2	48.4	13.9
Land	549,336	629,537	45.0	45.5	14.6
Water ways	39,447	41,119	3.2	3.0	4.2
Total	1,221,156	1,385,029	100.0	100.0	13.4

V. Remark: Percentage share of international tourist arrivals at destinations in January - June 2011

	Arrivals		share (%)		change (%)
	2010	2011	2010	2011	2011*/10
Phnom Penh & Other Destinations	580,212	600,520	47.5	43.4	3.5
Siem Reap Province	640,944	784,509	52.5	56.6	22.4
Total	1,221,156	1,385,029	100.0	100.0	13.4

VI. Outbound tourists departures in January - June 2011

	Outbound		change (%)
	2010	2011	2011*/10
Cambodian outbound tourists	232,317	293,033	26.1
International outbound tourists	1,154,035	1,379,021	19.5

International Tourist Arrivals to Cambodia by Country of Residence in January - June 2011

(by all mean of transportations)

Regions Country of Residence	2010		2011			share		change	
			Purpose of Visit			Total	Female	2011*	2011*/10
			Tourists	Business	Other				
GRAND TOTAL	1,221,156	1,297,255	72,053	15,721	1,385,029	614,585	100.0	13.4	
Asia and the Pacific	870,604	925,986	57,831	8,137	991,954	451,034	71.6	13.9	
ASEAN	453,890	482,898	17,551	3,752	504,201	229,697	36.4	11.1	
Brunei Darussalam	217	164	8	59	231	91	0.0	6.5	
Indonesia	5,698	5,439	1,543	235	7,217	2,797	0.5	26.7	
Lao PDR	38,185	54,838	86	268	55,192	36,195	4.0	44.5	
Malaysia	38,904	45,031	3,177	154	48,362	16,940	3.5	24.3	
Myanmar	1,226	1,950	223	57	2,230	968	0.2	81.9	
Philippines	27,922	27,684	2,722	526	30,932	18,529	2.2	10.8	
Singapore	21,508	20,984	1,034	147	22,165	8,663	1.6	3.1	
Thailand	75,695	42,263	5,081	792	48,136	16,193	3.5	-36.4	
Vietnam	244,535	284,545	3,677	1,514	289,736	129,321	20.9	18.5	
Eastern Asia	353,901	377,758	35,721	2,690	416,169	192,948	30.0	17.6	
China (RPC)	84,335	91,832	21,281	662	113,775	50,245	8.2	34.9	
Hong Kong SAR	2,131	2,632	138	7	2,777	1,267	0.2	30.3	
Japan	75,039	72,635	2,613	1,030	76,278	34,821	5.5	1.7	
Korea (ROK)	144,077	164,856	6,741	971	172,568	83,491	12.5	19.8	
Mongolia	118	118	7	12	137	74	0.0	16.1	
Taiwan, China	48,201	45,685	4,941	8	50,634	23,050	3.7	5.0	
Southern Asia	8,424	7,271	1,548	485	9,304	2,421	0.7	10.4	
Afghanistan	143	61	5	8	74	17	0.0	-48.3	
Bangladesh	623	432	106	74	612	73	0.0	-1.8	
Bhutan		21	2	16	39	15	0.0		
India	6,238	5,777	1,010	232	7,019	1,978	0.5	12.5	
Nepal	472	351	126	47	524	124	0.0	11.0	
Pakistan	457	284	196	61	541	108	0.0	18.4	
Sri Lanka	491	345	103	47	495	106	0.0	0.8	
Western Asia	0	1,081	65	9	1,155	619	0.1		
Kazakhstan		703	53	6	762	352	0.1		
Uzbekistan		378	12	3	393	267	0.0		
Oceania	52,219	52,744	2,877	1,110	56,731	24,458	4.1	8.6	
Australia	45,656	45,663	2,450	990	49,103	21,434	3.5	7.5	
Fiji		48	15	8	71	23	0.0		
New Zealand	6,563	7,033	412	112	7,557	3,001	0.5	15.1	
Other Asia & the Pacific	2,170	4,234	69	91	4,394	891	0.3	102.5	
Europe	238,977	259,040	8,933	4,433	272,406	112,897	19.7	14.0	
Northern Europe	78,740	75,515	2,927	1,108	79,550	30,369	5.7	1.0	
Denmark	4,560	4,982	160	65	5,207	2,154	0.4	14.2	
Finland	3,268	3,602	111	98	3,811	1,382	0.3	16.6	
Iceland	149	191	5	0	196	68	0.0	31.5	
Ireland	3,970	3,576	133	57	3,766	1,330	0.3	-5.1	
Norway	4,595	4,544	165	51	4,760	1,968	0.3	3.6	
Sweden	8,264	8,292	246	92	8,630	3,364	0.6	4.4	
United Kingdom	53,934	50,328	2,107	745	53,180	20,103	3.8	-1.4	
Western Europe	113,550	113,303	4,794	2,661	120,758	48,692	8.7	6.3	
Austria	4,451	3,853	82	49	3,984	1,501	0.3	-10.5	
Belgium	6,475	6,008	225	157	6,390	2,480	0.5	-1.3	
France	51,946	51,701	3,104	1,519	56,324	23,624	4.1	8.4	
Germany	32,026	33,015	767	617	34,399	13,421	2.5	7.4	
Luxembourg	320	238	7	13	258	103	0.0	-19.4	
Monaco		35	0	3	38	16	0.0		
Netherlands	10,754	10,055	323	179	10,557	4,051	0.8	-1.8	
Switzerland	7,578	8,398	286	124	8,808	3,496	0.6	16.2	
Eastern Europe	26,711	47,393	593	182	48,168	25,200	3.5	80.3	
Bulgaria	274	211	4	8	223	117	0.0	-18.6	
Czech Republic	1,682	1,761	22	7	1,790	762	0.1	6.4	
Estonia		546	11	8	565	216	0.0		
Hungary	1,841	1,565	47	8	1,620	739	0.1	-12.0	
Lithuania		903	6	1	910	483	0.1		
Poland	4,001	4,354	31	39	4,424	2,254	0.3	10.6	
Romania	790	530	10	7	547	291	0.0	-30.8	
Russian Federation	16,166	34,829	398	70	35,297	18,837	2.5	118.3	
Slovakia	577	658	11	22	691	303	0.0	19.8	
Ukraine	1,380	2,036	53	12	2,101	1,198	0.2	52.2	

International Tourist Arrivals to Cambodia by Country of Residence in January - June 2011

(by all mean of transportations)

Regions Country of Residence	2010		2011			share		change	
			Purpose of Visit			Total	Female	(%)	(%)
			Tourists	Business	Other			2011*	2011*/10
GRAND TOTAL	1,221,156	1,297,255	72,053	15,721	1,385,029	614,585	100.0	13.4	
Southern Europe	18,170	18,993	568	415	19,976	7,886	1.4	9.9	
Croatia	216	216	18	7	241	88	0.0	11.6	
Greece	805	592	18	5	615	226	0.0	-23.6	
Italy	8,924	9,305	260	137	9,702	3,576	0.7	8.7	
Portugal	1,028	1,230	19	22	1,271	614	0.1	23.6	
Serbia		208	4	8	220	97	0.0		
Slovenia	346	384	4	4	392	170	0.0	13.3	
Spain	5,854	5,698	165	139	6,002	2,635	0.4	2.5	
Turkey	997	1,360	80	93	1,533	480	0.1	53.8	
Other Europe	1,806	3,836	51	67	3,954	750	0.3	118.9	
Americas	104,930	105,227	4,923	2,984	113,134	48,139	8.2	7.8	
Argentina	1,201	1,915	3	19	1,937	973	0.1	61.3	
Brazil	1,289	1,817	17	33	1,867	894	0.1	44.8	
Canada	21,547	22,098	970	278	23,346	10,311	1.7	8.3	
Chile	1,144	1,325	44	18	1,387	642	0.1	21.2	
Colombia	530	1,361	22	12	1,395	700	0.1	163.2	
Costa Rica		110	8	3	121	76	0.0		
Ecuador		79	2	2	83	50	0.0		
Mexico	1,490	1,463	30	14	1,507	724	0.1	1.1	
Peru	219	228	4	10	242	107	0.0	10.5	
United States	76,096	72,751	3,782	2,533	79,066	32,805	5.7	3.9	
Uruguay	267	387	3	8	398	232	0.0	49.1	
Other Americas	1,147	1,693	38	54	1,785	625	0.1	55.6	
Africa	2,357	2,613	257	98	2,968	1,021	0.2	25.9	
Cameroon	291	220	4	6	230	45	0.0	-21.0	
Congo		92	0	5	97	22	0.0		
Ghana	288	231	12	7	250	35	0.0	-13.2	
Kenya		118	4	19	141	69	0.0		
Liberia		252	3	0	255	54	0.0		
Nigeria	395	116	144	10	270	42	0.0	-31.6	
Sudan	24	9	1	2	12	5	0.0	-50.0	
South Africa	1,164	1,248	83	15	1,346	545	0.1	15.6	
Uganda		164	0	8	172	132	0.0		
Other Africa	195	163	6	26	195	72	0.0	0.0	
Middle East	4,288	4,389	109	69	4,567	1,494	0.3	6.5	
Egypt	123	59	3	12	74	14	0.0	-39.8	
Iran	245	356	7	2	365	52	0.0	49.0	
Iraq		37	2	7	46	11	0.0		
Israel	3,544	3,296	88	17	3,401	1,311	0.2	-4.0	
Kuwait	222	257	0	0	257	5	0.0	15.8	
Oman		54	0	5	59	9	0.0		
Palestine		17	1	0	18	2	0.0		
Qatar		44	0	0	44	20	0.0		
Saudi Arabia	24	24	2	4	30	6	0.0	25.0	
United Arab Emirates		73	0	1	74	9	0.0		
Yemen		55	4	4	63	10	0.0		
Other Middle East	130	117	2	17	136	45	0.0	4.6	

Remark:

- Cambodian Overseas:	37,905
- Cambodian Residence:	262,566
- Cambodian outbound tourist departures:	293,033
- International outbound tourist departures:	1,379,021

Executive Summary Report in June 2011

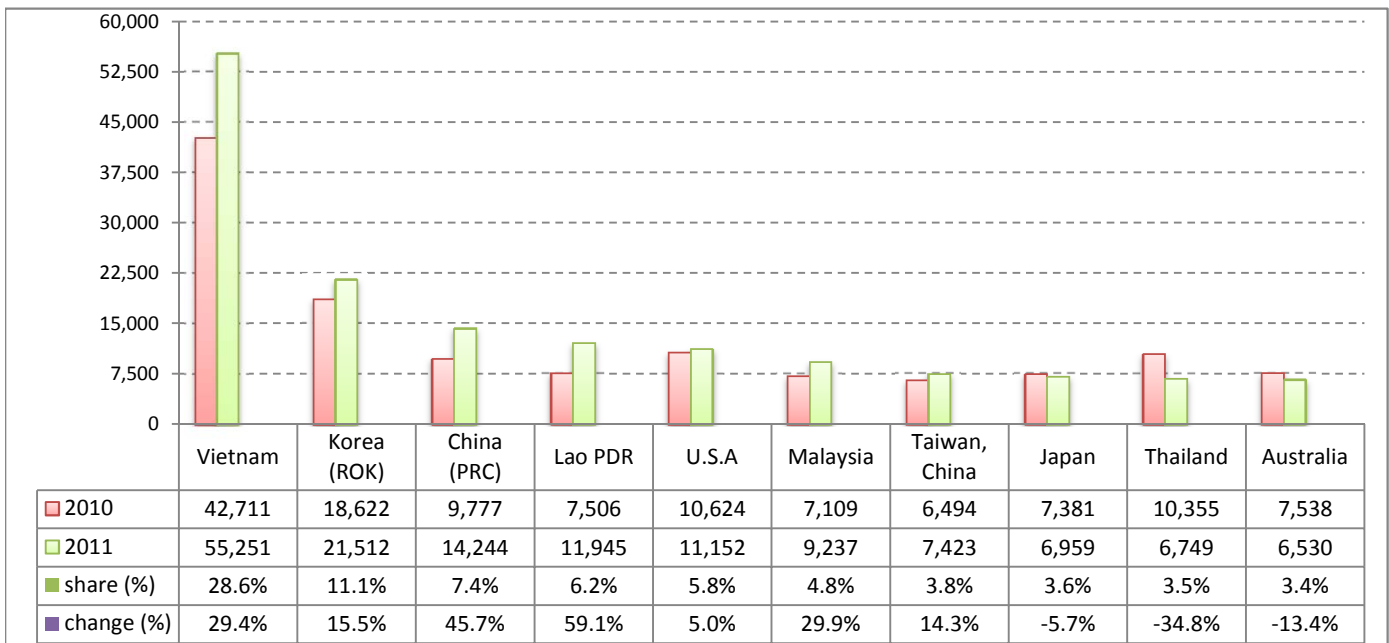
I. International tourist arrivals to Cambodia in June was:

193,272

II. Mode of arrivals

	visitors	share (%)
Air	90,010	46.6
Phnom Penh Int'l Airport	45,554	23.6
Siem Reap Int'l Airport	44,456	23.0
Land and Water ways	103,262	53.4
Land	99,390	51.4
Water ways	3,872	2.0
Total	193,272	100.0

III. Top ten markets arrivals in June 2011



IV. International tourist arrivals to Cambodia in June 2011

	Inbound		share (%)		change (%)
	2010	2011	2010	2011	2011*/10
Air	79,850	90,010	48.0	46.6	12.7
Phnom Penh Int'l Airport	41,084	45,554	24.7	23.6	10.9
Siem Reap Int'l Airport	38,766	44,456	23.3	23.0	14.7
Land and Water ways	86,485	103,262	52.0	53.4	19.4
Land	81,387	99,390	48.9	51.4	22.1
Water ways	5,098	3,872	3.1	2.0	-24.0
Total	166,335	193,272	100.0	100.0	16.2

V. Remark: Percentage share of international tourist arrivals at destinations in June 2011

	Arrivals		share (%)		change (%)
	2010	2011	2010	2011	2011*/10
Phnom Penh & Other Destinations	91,194	89,841	54.8	46.5	-1.5
Siem Reap Province	75,141	103,431	45.2	53.5	37.6
Total	166,335	193,272	100.0	100.0	16.2

VI. Outbound tourists departures in June 2011

	Outbound		change (%)
	2010	2011	2011*/10
Cambodian outbound tourists	37,844	50,671	33.9
International outbound tourists	155,291	188,863	21.6

International Tourist Arrivals to Cambodia by Country of Residence in June 2011

(by all mean of transportations)

Regions Country of Residence	2010		2011			share		change	
		Total	Purpose of Visit			Total	Female	2011*	2011*/10
			Tourists	Business	Other				
GRAND TOTAL	166,335	180,501	10,667	2,104	193,272	84,748	100.0	16.2	
Asia and the Pacific	130,604	145,249	8,432	1,050	154,731	69,634	80.1	18.5	
ASEAN	77,742	91,554	2,595	430	94,579	41,472	48.9	21.7	
Brunei Darussalam	51	42	1	8	51	24	0.0	0.0	
Indonesia	929	777	282	33	1,092	435	0.6	17.5	
Lao PDR	7,506	11,857	10	78	11,945	8,218	6.2	59.1	
Malaysia	7,109	8,697	517	23	9,237	3,431	4.8	29.9	
Myanmar	161	174	27	8	209	64	0.1	29.8	
Philippines	4,371	4,431	370	62	4,863	2,955	2.5	11.3	
Singapore	4,549	4,988	185	9	5,182	2,538	2.7	13.9	
Thailand	10,355	5,982	679	88	6,749	1,917	3.5	-34.8	
Vietnam	42,711	54,606	524	121	55,251	21,890	28.6	29.4	
Eastern Asia	42,711	45,190	5,142	353	50,685	24,322	26.2	18.7	
China (RPC)	9,777	11,243	2,918	83	14,244	6,022	7.4	45.7	
Hong Kong SAR	429	503	26	1	530	256	0.3	23.5	
Japan	7,381	6,411	433	115	6,959	3,989	3.6	-5.7	
Korea (ROK)	18,622	20,320	1,041	151	21,512	10,508	11.1	15.5	
Mongolia	8	15	2	0	17	11	0.0	112.5	
Taiwan, China	6,494	6,698	722	3	7,423	3,536	3.8	14.3	
Southern Asia	1,342	1,059	224	80	1,363	344	0.7	1.6	
Afghanistan	13	1	1	0	2	0	0.0	-84.6	
Bangladesh	150	68	11	9	88	7	0.0	-41.3	
Bhutan		2	0	1	3	2	0.0		
India	962	826	149	47	1,022	285	0.5	6.2	
Nepal	69	56	15	5	76	20	0.0	10.1	
Pakistan	78	47	30	8	85	9	0.0	9.0	
Srilanka	70	59	18	10	87	21	0.0	24.3	
Western Asia	0	124	9	1	134	86	0.1		
Kazakhstan		48	7	1	56	27	0.0		
Uzbekistan		76	2	0	78	59	0.0		
Oceania	8,520	7,142	440	172	7,754	3,272	4.0	-9.0	
Australia	7,538	6,002	373	155	6,530	2,785	3.4	-13.4	
Fiji		7	2	0	9	3	0.0		
New Zealand	982	1,133	65	17	1,215	484	0.6	23.7	
Other Asia & the Pacific	289	180	22	14	216	138	0.1	-25.3	
Europe	21,207	21,125	1,421	577	23,123	8,817	12.0	9.0	
Northern Europe	8,494	7,753	452	151	8,356	2,970	4.3	-1.6	
Denmark	363	422	24	10	456	163	0.2	25.6	
Finland	264	203	16	14	233	73	0.1	-11.7	
Iceland	13	16	1	0	17	7	0.0	30.8	
Ireland	659	572	27	7	606	223	0.3	-8.0	
Norway	359	330	27	5	362	112	0.2	0.8	
Sweden	537	480	19	11	510	179	0.3	-5.0	
United Kingdom	6,299	5,730	338	104	6,172	2,213	3.2	-2.0	
Western Europe	9,257	8,780	762	358	9,900	3,565	5.1	6.9	
Austria	207	191	17	6	214	82	0.1	3.4	
Belgium	463	517	33	16	566	190	0.3	22.2	
France	5,346	4,708	518	239	5,465	2,065	2.8	2.2	
Germany	1,709	1,889	104	65	2,058	665	1.1	20.4	
Luxembourg	13	14	0	1	15	4	0.0	15.4	
Monaco		12	0	1	13	7	0.0		
Netherlands	1,033	928	53	20	1,001	347	0.5	-3.1	
Switzerland	486	521	37	10	568	205	0.3	16.9	
Eastern Europe	1,498	2,732	105	14	2,851	1,479	1.5	90.3	
Bulgaria	18	12	1	1	14	8	0.0	-22.2	
Czech Republic	53	77	4	0	81	39	0.0	52.8	
Estonia		16	0	1	17	7	0.0		
Hungary	75	74	7	1	82	34	0.0	9.3	
Lithuania		12	1	0	13	7	0.0		
Poland	220	234	8	6	248	99	0.1	12.7	
Romania	29	79	3	2	84	42	0.0	189.7	
Russian Federation	985	2,021	59	2	2,082	1,126	1.1	111.4	
Slovakia	29	47	0	1	48	34	0.0	65.5	
Ukraine	89	160	22	0	182	83	0.1	104.5	

International Tourist Arrivals to Cambodia by Country of Residence in June 2011

(by all mean of transportations)

Regions Country of Residence	2010		2011			share		change	
			Purpose of Visit			Total	Female	(%)	(%)
			Tourists	Business	Other			2011*	2011*/10
GRAND TOTAL	166,335	180,501	10,667	2,104	193,272	84,748	100.0	16.2	
Southern Europe	1,688	1,763	84	42	1,889	711	1.0	11.9	
Croatia	13	10	2	0	12	4	0.0	-7.7	
Greece	176	29	5	0	34	11	0.0	-80.7	
Italy	507	545	35	15	595	175	0.3	17.4	
Portugal	85	139	2	0	141	60	0.1	65.9	
Serbia		15	1	1	17	5	0.0		
Slovenia	12	21	0	0	21	9	0.0	75.0	
Spain	811	914	30	23	967	424	0.5	19.2	
Turkey	84	90	9	3	102	23	0.1	21.4	
Other Europe	270	97	18	12	127	92	0.1	-53.0	
Americas	13,782	13,247	746	458	14,451	6,015	7.5	4.9	
Argentina	116	129	0	0	129	66	0.1	11.2	
Brazil	143	181	5	9	195	92	0.1	36.4	
Canada	2,231	2,194	121	33	2,348	999	1.2	5.2	
Chile	61	115	0	0	115	57	0.1	88.5	
Colombia	63	101	4	1	106	54	0.1	68.3	
Costa Rica		2	1	1	4	1	0.0		
Ecuador		13	0	1	14	8	0.0		
Mexico	249	227	8	2	237	113	0.1	-4.8	
Peru	31	21	1	2	24	16	0.0	-22.6	
United States	10,624	10,159	594	399	11,152	4,533	5.8	5.0	
Uruguay	12	19	0	0	19	11	0.0	58.3	
Other Americas	252	86	12	10	108	65	0.1	-57.1	
Africa	370	400	47	14	461	172	0.2	24.6	
Cameroon	60	55	0	0	55	12	0.0	-8.3	
Congo		28	0	0	28	14	0.0		
Ghana	40	27	1	1	29	5	0.0	-27.5	
Kenya		23	1	3	27	14	0.0		
Liberia		38	0	0	38	7	0.0		
Nigeria	83	17	22	2	41	10	0.0	-50.6	
Sudan	5	3	0	0	3	2	0.0	-40.0	
South Africa	162	153	20	3	176	67	0.1	8.6	
Uganda		36	0	1	37	27	0.0		
Other Africa	20	20	3	4	27	14	0.0	35.0	
Middle East	372	480	21	5	506	110	0.3	36.0	
Egypt	14	11	2	0	13	3	0.0	-7.1	
Iran	39	45	1	0	46	8	0.0	17.9	
Iraq		25	0	0	25	9	0.0		
Israel	266	242	15	0	257	78	0.1	-3.4	
Kuwait	34	86	0	0	86	0	0.0	152.9	
Oman		14	0	0	14	0	0.0		
Palestine		1	0	0	1	0	0.0		
Qatar		3	0	0	3	0	0.0		
Saudi Arabia	6	2	1	0	3	0	0.0	-50.0	
United Arab Emirates		27	0	0	27	3	0.0		
Yemen		10	1	2	13	1	0.0		
Other Middle East	13	14	1	3	18	8	0.0	38.5	

Remark:

- Cambodian Overseas:	6,101
- Cambodian Residence:	43,293
- Cambodian outbound tourist departures:	50,671
- International outbound tourist departures:	188,863

COMPILED BY:

1. Mr. Kong Sopheareak

Director
Statistics & Tourism Information Department
Fax: +855 23 885003
E-mail: kong@mot.gov.kh

2. Mr. Horth Vanny

Chief of Tourism Statistics Office
Compile and data analysis
Tel.: +855 12 827664