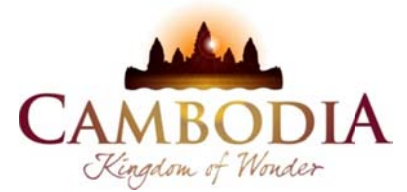




KINGDOM OF CAMBODIA
NATION RELIGION KING



TOURISM STATISTICS REPORT

February 2012

MINISTRY OF TOURISM

Statistics and Tourism Information Department

No. A3, Street 169, Sangkat Veal Vong, Khan 7 Makara, Phnom Penh, Cambodia.

Fax: +855 23 885003

E-mail: kong@mot.gov.kh

Web site: www.mot.gov.kh

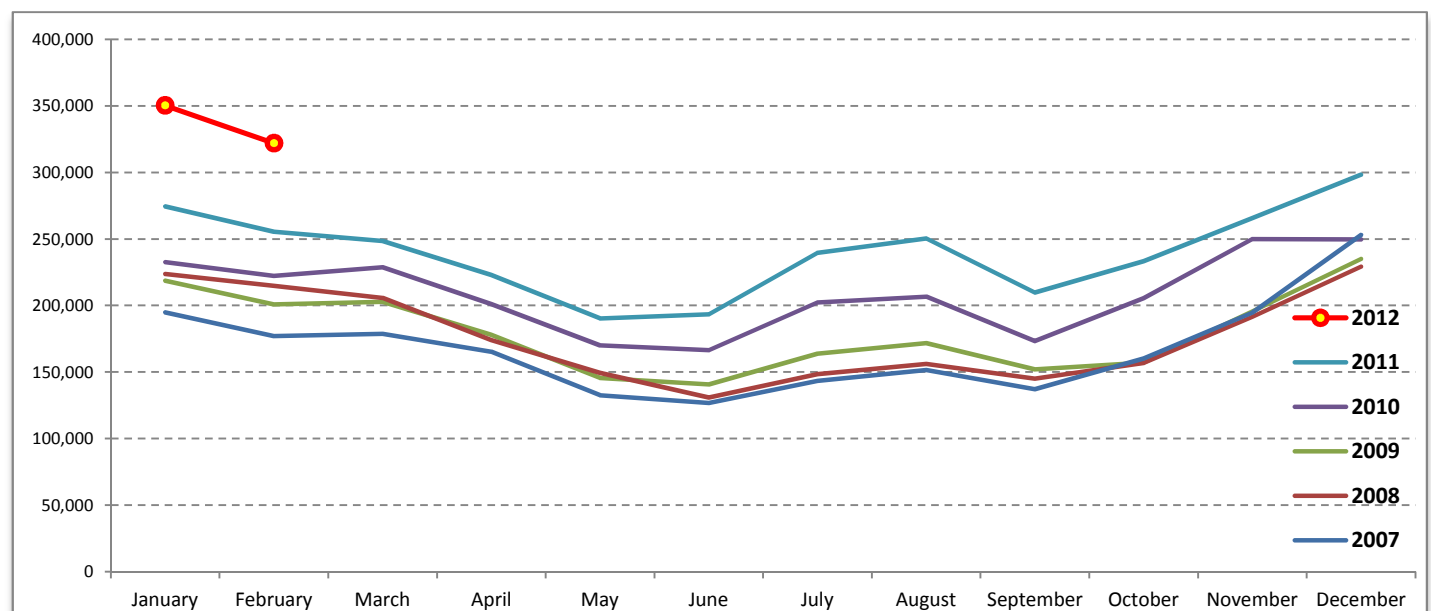
Tourism Highlights

International Tourist Arrivals, Average Length of Stay, Hotels Occupancy & Tourism Receipts 1993 - 2011

Years	Tourist Arrivals		Average Length	Hotels Occupancy	Tourism Receipts
	number	change (%)	of Stay (days)	(%)	(Million US\$)
1993	118,183	-	N/A	N/A	N/A
1994	176,617	49.4	N/A	N/A	N/A
1995	219,680	24.4	8.00	37.00	100
1996	260,489	18.6	7.50	40.00	118
1997	218,843	-16.0	6.40	30.00	103
1998	286,524	30.9	5.20	40.00	166
1999	367,743	28.3	5.50	44.00	190
2000	466,365	26.8	5.50	45.00	228
2001	604,919	29.7	5.50	48.00	304
2002	786,524	30.0	5.80	50.00	379
2003	701,014	-10.9	5.50	50.00	347
2004	1,055,202	50.5	6.30	52.00	578
2005	1,421,615	34.7	6.30	52.00	832
2006	1,700,041	19.6	6.50	54.79	1,049
2007	2,015,128	18.5	6.50	54.79	1,400
2008	2,125,465	5.5	6.65	62.68	1,595
2009	2,161,577	1.7	6.45	63.57	1,561
2010	2,508,289	16.0	6.45	65.74	1,786
2011	2,881,862	14.9	6.50	66.15	1,912

International tourist arrivals to Cambodia

Destination	Months	2007	2008	2009	2010	2011	2012	change (%) 2012*/11
Cambodia	Q1	550,813	644,205	622,288	683,692	778,467	672,127	
<i>International tourist arrivals</i>	January	194,932	223,581	218,691	232,590	274,471	350,257	27.6
<i>by all means of</i>	February	177,130	214,902	200,789	222,354	255,499	321,870	26.0
<i>transportations</i>	March	178,751	205,722	202,808	228,748	248,497		
	Q2	424,536	454,031	464,230	537,464	606,562	0	
	April	165,347	173,903	177,955	200,965	223,032		
	May	132,512	149,275	145,564	170,164	190,258		
	June	126,677	130,853	140,711	166,335	193,272		
	Q3	431,815	449,693	487,422	582,024	699,760	0	
	July	143,310	148,449	163,817	202,349	239,527		
	August	151,478	156,098	171,668	206,563	250,429		
	September	137,027	145,146	151,937	173,112	209,804		
	Q4	607,964	577,536	587,637	705,109	797,073	0	
	October	160,235	156,718	157,105	205,515	233,190		
	November	194,646	191,549	195,570	249,892	265,539		
	December	253,083	229,269	234,962	249,702	298,344		
	Total	2,015,128	2,125,465	2,161,577	2,508,289	2,881,862	672,127	26.8



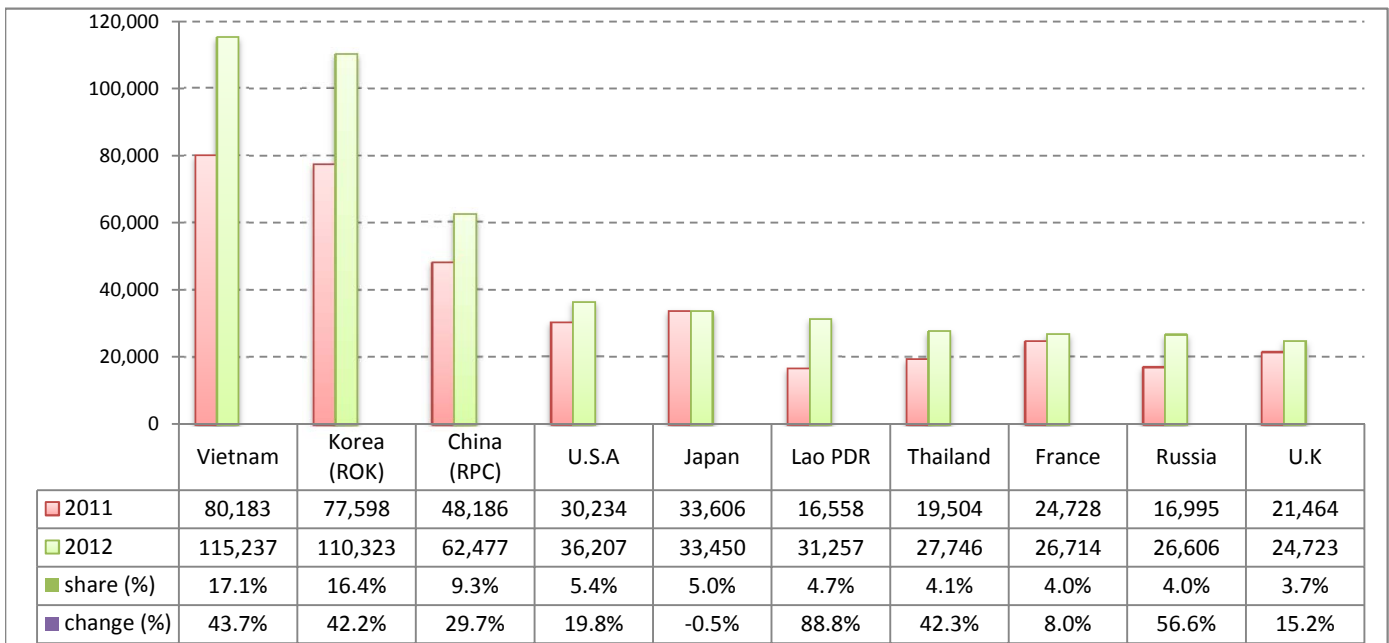
Executive Summary Report in the First Two Months 2012

I. International tourist arrivals to Cambodia in January - February 2012 was: **672,127**

II. Mode of arrivals

	visitors	share (%)
Air	353,647	52.6
Phnom Penh Int'l Airport	125,078	18.6
Siem Reap Int'l Airport	228,569	34.0
Land and Water ways	318,480	47.4
Land	295,680	44.0
Water ways	22,800	3.4
Total	672,127	100.0

III. Top ten markets arrivals in January 2012



IV. International tourist arrivals to Cambodia in January - February 2012

	Inbound		share (%)		change (%)
	2011	2012	2011	2012	2012*/11
Air	297,189	353,647	56.1	52.6	19.0
Phnom Penh Int'l Airport	116,107	125,078	21.9	18.6	7.7
Siem Reap Int'l Airport	181,082	228,569	34.2	34.0	26.2
Land and Water ways	232,781	318,480	43.9	47.4	36.8
Land	216,946	295,680	40.9	44.0	36.3
Water ways	15,835	22,800	3.0	3.4	44.0
Total	529,970	672,127	100.0	100.0	26.8

V. Remark: Percentage share of international tourist arrivals at destinations in January - February 2012

	Arrivals		share (%)		change (%)
	2011	2012	2011	2012	2012*/11
Phnom Penh & Other Destinations	217,023	230,850	41.0	34.3	6.4
Siem Reap Province	312,947	441,277	59.0	65.7	41.0
Total	529,970	672,127	100.0	100.0	26.8

VI. Outbound tourists departures in January - February 2012

	Outbound		change (%)
	2011	2012	2012*/11
Cambodian outbound tourists	89,765	130,583	45.5
International outbound tourists	592,250	667,981	12.8

International Tourist Arrivals to Cambodia by Country of Residence in January - February 2012

(by all mean of transportations)

Regions Country of Residence	2011	2012			Total	Female	share	change
		Purpose of Visit					(%)	(%)
		Holiday	Business	Other			2012*	2012*/11
GRAND TOTAL	529,970	626,777	25,289	20,061	672,127	311,129	100.0	26.8
Asia and the Pacific	356,187	438,549	19,788	13,736	472,073	224,132	70.2	32.5
ASEAN	148,712	199,107	5,419	10,825	215,351	98,468	32.0	44.8
Brunei Darussalam	64	76	2	30	108	35	0.0	68.8
Indonesia	2,356	2,477	350	64	2,891	1,078	0.4	22.7
Lao PDR	16,558	31,160	9	88	31,257	21,272	4.7	88.8
Malaysia	14,060	15,171	1,187	90	16,448	5,676	2.4	17.0
Myanmar	645	655	92	27	774	353	0.1	20.0
Philippines	9,217	13,499	950	159	14,608	9,063	2.2	58.5
Singapore	6,125	5,933	305	44	6,282	2,167	0.9	2.6
Thailand	19,504	25,383	1,419	944	27,746	10,936	4.1	42.3
Vietnam	80,183	104,753	1,105	9,379	115,237	47,888	17.1	43.7
Eastern Asia	178,568	210,014	12,778	1,478	224,270	111,395	33.4	25.6
China (RPC)	48,186	54,090	7,836	551	62,477	30,644	9.3	29.7
Hong Kong SAR	967	960	40	1	1,001	455	0.1	3.5
Japan	33,606	31,958	1,119	373	33,450	15,315	5.0	-0.5
Korea (ROK)	77,598	107,818	2,050	455	110,323	57,050	16.4	42.2
Mongolia	51	67	3	9	79	40	0.0	54.9
Taiwan, China	18,160	15,121	1,730	89	16,940	7,891	2.5	-6.7
Southern Asia	3,223	2,959	472	141	3,572	1,033	0.5	10.8
Afghanistan	64	24	1	12	37	5	0.0	-42.2
Bangladesh	183	154	35	16	205	27	0.0	12.0
Bhutan	16	21	0	8	29	7	0.0	81.3
India	2,493	2,379	319	81	2,779	878	0.4	11.5
Nepal	168	152	13	7	172	50	0.0	2.4
Pakistan	160	102	60	13	175	26	0.0	9.4
Sri Lanka	139	127	44	4	175	40	0.0	25.9
Western Asia	515	583	27	2	612	336	0.1	18.8
Kazakhstan	395	493	19	1	513	271	0.1	29.9
Uzbekistan	120	90	8	1	99	65	0.0	-17.5
Oceania	23,566	25,376	1,060	1,260	27,696	12,632	4.1	17.5
Australia	20,961	22,411	862	1,078	24,351	11,208	3.6	16.2
Fiji	17	18	2	0	20	5	0.0	17.6
New Zealand	2,588	2,947	196	182	3,325	1,419	0.5	28.5
Other Asia & the Pacific	1,603	510	32	30	572	268	0.1	-64.3
Europe	125,447	136,603	3,539	2,712	142,854	61,565	21.3	13.9
Northern Europe	34,473	37,014	1,225	383	38,622	14,852	5.7	12.0
Denmark	2,737	2,528	56	14	2,598	1,065	0.4	-5.1
Finland	1,791	1,796	60	32	1,888	737	0.3	5.4
Iceland	88	84	3	1	88	26	0.0	0.0
Ireland	1,415	1,562	58	28	1,648	594	0.2	16.5
Norway	2,350	2,300	48	14	2,362	1,000	0.4	0.5
Sweden	4,628	5,158	103	54	5,315	2,032	0.8	14.8
United Kingdom	21,464	23,586	897	240	24,723	9,398	3.7	15.2
Western Europe	56,325	55,806	1,786	2,078	59,670	25,498	8.9	5.9
Austria	2,178	2,424	36	29	2,489	973	0.4	14.3
Belgium	2,911	2,621	96	70	2,787	1,060	0.4	-4.3
France	24,728	24,004	1,071	1,639	26,714	11,704	4.0	8.0
Germany	16,787	16,608	308	201	17,117	6,807	2.5	2.0
Luxembourg	105	95	1	4	100	39	0.0	-4.8
Monaco	8	8	0	0	8	5	0.0	0.0
Netherlands	4,909	5,332	134	61	5,527	2,228	0.8	12.6
Switzerland	4,699	4,714	140	74	4,928	2,682	0.7	4.9
Eastern Europe	23,485	33,581	299	71	33,951	17,005	5.1	44.6
Bulgaria	109	164	2	0	166	86	0.0	52.3
Czech Republic	886	1,209	18	5	1,232	499	0.2	39.1
Estonia	310	287	3	4	294	125	0.0	-5.2
Hungary	908	849	9	3	861	352	0.1	-5.2
Lithuania	520	296	1	0	297	157	0.0	-42.9
Poland	2,162	2,484	8	10	2,502	1,249	0.4	15.7
Romania	250	265	9	4	278	161	0.0	11.2
Russian Federation	16,995	26,361	207	38	26,606	13,551	4.0	56.6
Slovakia	278	346	21	4	371	152	0.1	33.5
Ukraine	1,067	1,320	21	3	1,344	673	0.2	26.0

International Tourist Arrivals to Cambodia by Country of Residence in January - February 2012

(by all mean of transportations)

Regions Country of Residence	2011	2012			Total	Female	share	change
		Purpose of Visit					(%)	(%)
		Holiday	Business	Other			2012*	2012*/11
GRAND TOTAL	529,970	626,777	25,289	20,061	672,127	311,129	100.0	26.8
Southern Europe	9,726	9,832	210	164	10,206	3,991	1.5	4.9
Croatia	149	165	4	1	170	69	0.0	14.1
Greece	320	213	1	3	217	70	0.0	-32.2
Italy	5,653	5,482	100	46	5,628	2,143	0.8	-0.4
Portugal	462	416	6	9	431	179	0.1	-6.7
Serbia	125	91	8	1	100	42	0.0	-20.0
Slovenia	204	263	7	2	272	105	0.0	33.3
Spain	1,926	2,616	55	65	2,736	1,194	0.4	42.1
Turkey	887	586	29	37	652	189	0.1	-26.5
Other Europe	1,438	370	19	16	405	219	0.1	-71.8
Americas	45,093	48,139	1,826	3,533	53,498	23,964	8.0	18.6
Argentina	948	1,508	5	3	1,516	761	0.2	59.9
Brazil	883	1,341	6	17	1,364	665	0.2	54.5
Canada	9,947	11,332	426	568	12,326	5,431	1.8	23.9
Chile	636	846	1	2	849	425	0.1	33.5
Colombia	1,054	182	2	6	190	101	0.0	-82.0
Costa Rica	29	80	1	0	81	45	0.0	179.3
Ecuador	30	16	0	5	21	13	0.0	-30.0
Mexico	342	520	10	8	538	256	0.1	57.3
Peru	74	89	4	1	94	39	0.0	27.0
United States	30,234	31,936	1,360	2,911	36,207	16,043	5.4	19.8
Uruguay	68	43	0	0	43	16	0.0	-36.8
Other Americas	848	246	11	12	269	169	0.0	-68.3
Africa	1,052	815	88	51	954	401	0.1	-9.3
Cameroon	55	44	1	5	50	13	0.0	-9.1
Congo	30	15	0	3	18	2	0.0	-40.0
Ghana	80	26	4	2	32	3	0.0	-60.0
Kenya	32	38	6	8	52	27	0.0	62.5
Liberia	88	21	0	0	21	3	0.0	-76.1
Nigeria	90	59	46	12	117	24	0.0	30.0
Sudan	5	6	1	1	8	3	0.0	60.0
South Africa	543	553	28	10	591	296	0.1	8.8
Uganda	44	8	0	4	12	4	0.0	-72.7
Other Africa	85	45	2	6	53	26	0.0	-37.6
Middle East	2,191	2,671	48	29	2,748	1,067	0.4	25.4
Egypt	24	28	2	7	37	8	0.0	54.2
Iran	133	108	2	0	110	28	0.0	-17.3
Iraq	3	14	0	1	15	5	0.0	400.0
Israel	1,801	2,283	40	11	2,334	997	0.3	29.6
Kuwait	74	133	0	1	134	5	0.0	81.1
Oman	15	14	0	4	18	1	0.0	20.0
Palestine	3	2	0	0	2	1	0.0	-33.3
Qatar	26	3	0	0	3	0	0.0	-88.5
Saudi Arabia	9	17	1	2	20	1	0.0	122.2
United Arab Emirates	18	22	0	0	22	1	0.0	22.2
Yemen	18	13	0	0	13	2	0.0	-27.8
Other Middle East	67	34	3	3	40	18	0.0	-40.3

Remark:

- Cambodian Overseas:
- Cambodian Residence:

- Cambodian outbound tourist departures: 130,583
 - International outbound tourist departures: 667,981

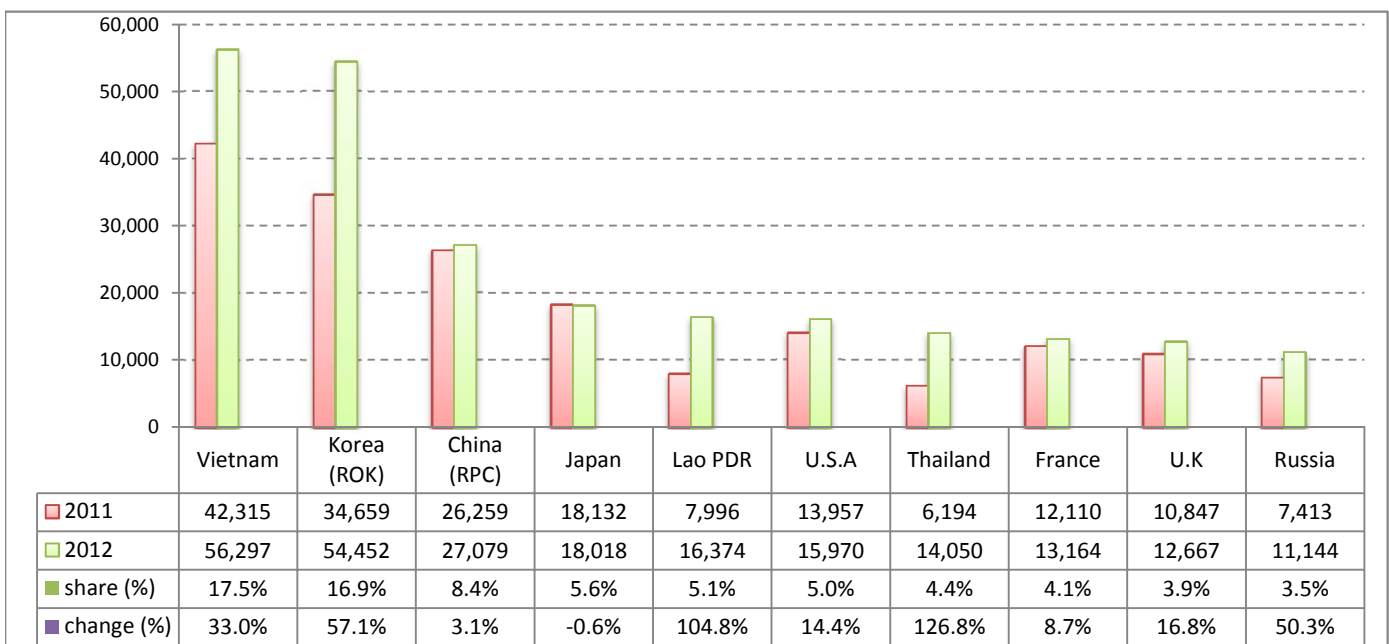
Executive Summary Report in February 2012

I. International tourist arrivals to Cambodia in February 2012 was: **321,870**

II. Mode of arrivals

	visitors	share (%)
Air	168,148	52.2
Phnom Penh Int'l Airport	59,122	18.4
Siem Reap Int'l Airport	109,026	33.9
Land and Water ways	153,722	47.8
Land	142,295	44.2
Water ways	11,427	3.6
Total	321,870	100.0

III. Top ten markets arrivals in February 2012



IV. International tourist arrivals to Cambodia in February 2012

	Inbound		share (%)		change (%)
	2011	2012	2011	2012	2012*/11
Air	145,008	168,148	56.8	52.2	16.0
Phnom Penh Int'l Airport	57,202	59,122	22.4	18.4	3.4
Siem Reap Int'l Airport	87,806	109,026	34.4	33.9	24.2
Land and Water ways	110,491	153,722	43.2	47.8	39.1
Land	102,767	142,295	40.2	44.2	38.5
Water ways	7,724	11,427	3.0	3.6	47.9
Total	255,499	321,870	100.0	100.0	26.0

V. Remark: Percentage share of international tourist arrivals at destinations in February 2012

	Arrivals		share (%)		change (%)
	2011	2012	2011	2012	2012*/11
Phnom Penh & Other Destinations	108,906	104,738	42.6	32.5	-3.8
Siem Reap Province	146,593	217,132	57.4	67.5	48.1
Total	255,499	321,870	100.0	100.0	26.0

VI. Outbound tourists departures in February 2012

	Outbound		change (%)
	2011	2012	2012*/11
Cambodian outbound tourists	42,124	59,042	40.2
International outbound tourists	253,363	311,097	22.8

International Tourist Arrivals to Cambodia by Country of Residence in February 2012

(by all mean of transportations)

Regions Country of Residence	2011	2012			Total	Female	share	change
		Purpose of Visit					(%)	(%)
		Holiday	Business	Other			2012*	2012*/11
GRAND TOTAL	255,499	292,293	12,469	17,108	321,870	148,205	100.0	26.0
Asia and the Pacific	173,308	205,716	9,963	12,195	227,874	106,990	70.8	31.5
ASEAN	72,871	94,490	2,170	10,223	106,883	48,820	33.2	46.7
Brunei Darussalam	22	36	1	10	47	17	0.0	113.6
Indonesia	955	1,269	161	27	1,457	532	0.5	52.6
Lao PDR	7,996	16,339	5	30	16,374	10,946	5.1	104.8
Malaysia	7,717	7,378	482	73	7,933	2,713	2.5	2.8
Myanmar	324	317	47	8	372	196	0.1	14.8
Philippines	4,344	6,609	376	55	7,040	4,350	2.2	62.1
Singapore	3,004	3,191	106	16	3,313	1,131	1.0	10.3
Thailand	6,194	12,661	557	832	14,050	5,706	4.4	126.8
Vietnam	42,315	46,690	435	9,172	56,297	23,229	17.5	33.0
Eastern Asia	89,060	100,405	7,132	811	108,348	52,905	33.7	21.7
China (RPC)	26,259	22,093	4,644	342	27,079	12,607	8.4	3.1
Hong Kong SAR	609	354	17	1	372	151	0.1	-38.9
Japan	18,132	17,318	549	151	18,018	8,153	5.6	-0.6
Korea (ROK)	34,659	53,272	958	222	54,452	28,048	16.9	57.1
Mongolia	24	29	2	6	37	15	0.0	54.2
Taiwan, China	9,377	7,339	962	89	8,390	3,931	2.6	-10.5
Southern Asia	1,544	1,418	220	62	1,700	482	0.5	10.1
Afghanistan	59	6	1	9	16	0	0.0	-72.9
Bangladesh	85	84	10	8	102	12	0.0	20.0
Bhutan	8	13	0	5	18	3	0.0	125.0
India	1,184	1,129	154	25	1,308	414	0.4	10.5
Nepal	81	86	7	3	96	27	0.0	18.5
Pakistan	71	47	28	10	85	15	0.0	19.7
Sri Lanka	56	53	20	2	75	11	0.0	33.9
Western Asia	219	234	14	0	248	133	0.1	13.2
Kazakhstan	172	205	12	0	217	113	0.1	26.2
Uzbekistan	47	29	2	0	31	20	0.0	-34.0
Oceania	8,820	8,890	406	1,081	10,377	4,516	3.2	17.7
Australia	7,907	7,980	348	933	9,261	4,078	2.9	17.1
Fiji	9	10	1	0	11	4	0.0	22.2
New Zealand	904	900	57	148	1,105	434	0.3	22.2
Other Asia & the Pacific	794	279	21	18	318	134	0.1	-59.9
Europe	59,449	64,417	1,554	1,890	67,861	29,635	21.1	14.1
Northern Europe	16,937	18,348	542	207	19,097	7,657	5.9	12.8
Denmark	1,326	1,138	29	9	1,176	514	0.4	-11.3
Finland	768	780	34	16	830	308	0.3	8.1
Iceland	28	32	3	1	36	9	0.0	28.6
Ireland	625	759	24	14	797	290	0.2	27.5
Norway	1,203	1,124	26	8	1,158	530	0.4	-3.7
Sweden	2,140	2,369	33	31	2,433	934	0.8	13.7
United Kingdom	10,847	12,146	393	128	12,667	5,072	3.9	16.8
Western Europe	27,130	26,709	771	1,592	29,072	12,324	9.0	7.2
Austria	1,102	1,255	18	14	1,287	526	0.4	16.8
Belgium	1,364	1,244	40	32	1,316	504	0.4	-3.5
France	12,110	11,358	449	1,357	13,164	5,869	4.1	8.7
Germany	8,305	8,529	145	90	8,764	3,569	2.7	5.5
Luxembourg	48	44	1	3	48	21	0.0	0.0
Monaco	7	2	0	0	2	0	0.0	-71.4
Netherlands	2,065	2,260	55	32	2,347	958	0.7	13.7
Switzerland	2,129	2,017	63	64	2,144	877	0.7	0.7
Eastern Europe	10,496	14,594	127	24	14,745	7,639	4.6	40.5
Bulgaria	39	79	2	0	81	42	0.0	107.7
Czech Republic	432	614	3	5	622	259	0.2	44.0
Estonia	159	165	3	2	170	66	0.1	6.9
Hungary	389	426	5	0	431	189	0.1	10.8
Lithuania	275	136	0	0	136	67	0.0	-50.5
Poland	1,140	1,235	2	5	1,242	628	0.4	8.9
Romania	81	84	4	0	88	49	0.0	8.6
Russian Federation	7,413	11,044	92	8	11,144	5,931	3.5	50.3
Slovakia	125	168	8	1	177	69	0.1	41.6
Ukraine	443	643	8	3	654	339	0.2	47.6

Source: Statistics and ICT Department, MOT

International Tourist Arrivals to Cambodia by Country of Residence in February 2012

(by all mean of transportations)

Regions Country of Residence	2011		2012			share		change	
			Purpose of Visit			Total	Female	(%)	(%)
			Holiday	Business	Other			2012*	2012*/11
GRAND TOTAL	255,499	292,293	12,469	17,108	321,870	148,205	100.0	26.0	
Southern Europe	4,226	4,620	104	60	4,784	1,917	1.5	13.2	
Croatia	55	59	2	0	61	22	0.0	10.9	
Greece	172	95	1	0	96	34	0.0	-44.2	
Italy	2,309	2,569	39	22	2,630	1,035	0.8	13.9	
Portugal	216	166	5	0	171	75	0.1	-20.8	
Serbia	62	25	4	0	29	12	0.0	-53.2	
Slovenia	72	138	2	2	142	59	0.0	97.2	
Spain	775	1,283	35	19	1,337	581	0.4	72.5	
Turkey	565	285	16	17	318	99	0.1	-43.7	
Other Europe	660	146	10	7	163	98	0.1	-75.3	
Americas	21,250	20,459	877	2,980	24,316	10,855	7.6	14.4	
Argentina	333	657	3	3	663	312	0.2	99.1	
Brazil	314	567	2	8	577	277	0.2	83.8	
Canada	4,687	5,349	251	485	6,085	2,763	1.9	29.8	
Chile	379	531	0	2	533	272	0.2	40.6	
Colombia	937	53	1	1	55	27	0.0	-94.1	
Costa Rica	12	27	0	0	27	15	0.0	125.0	
Ecuador	15	10	0	2	12	8	0.0	-20.0	
Mexico	150	199	7	1	207	100	0.1	38.0	
Peru	24	41	0	1	42	20	0.0	75.0	
United States	13,957	12,891	607	2,472	15,970	6,980	5.0	14.4	
Uruguay	9	17	0	0	17	9	0.0	88.9	
Other Americas	433	117	6	5	128	72	0.0	-70.4	
Africa	447	337	52	25	414	150	0.1	-7.4	
Cameroon	25	27	0	0	27	3	0.0	8.0	
Congo	15	11	0	3	14	1	0.0	-6.7	
Ghana	31	16	1	1	18	1	0.0	-41.9	
Kenya	17	12	5	1	18	9	0.0	5.9	
Liberia	42	12	0	0	12	1	0.0	-71.4	
Nigeria	51	36	30	12	78	19	0.0	52.9	
Sudan	2	2	1	1	4	1	0.0	100.0	
South Africa	201	198	13	1	212	101	0.1	5.5	
Uganda	19	2	0	3	5	2	0.0	-73.7	
Other Africa	44	21	2	3	26	12	0.0	-40.9	
Middle East	1,045	1,364	23	18	1,405	575	0.4	34.4	
Egypt	12	15	0	7	22	4	0.0	83.3	
Iran	56	45	0	0	45	10	0.0	-19.6	
Iraq	1	11	0	0	11	5	0.0	1000.0	
Israel	857	1,200	20	9	1,229	539	0.4	43.4	
Kuwait	39	53	0	0	53	5	0.0	35.9	
Oman	4	1	0	0	1	0	0.0	-75.0	
Palestine	1	2	0	0	2	1	0.0	100.0	
Qatar	23	1	0	0	1	0	0.0	-95.7	
Saudi Arabia	4	8	0	1	9	1	0.0	125.0	
United Arab Emirates	9	11	0	0	11	1	0.0	22.2	
Yemen	4	2	0	0	2	1	0.0	-50.0	
Other Middle East	35	15	3	1	19	8	0.0	-45.7	

Remark:

- Cambodian Overseas:
- Cambodian Residence:

- Cambodian outbound tourist departures: 59,042
 - International outbound tourist departures: 311,097

COMPILED BY:

1. Mr. Kong Sopheareak

Director
Statistics & Tourism Information Department
Fax: +855 23 885003
E-mail: kong@mot.gov.kh

2. Mr. Horth Vanny

Chief of Tourism Statistics Office
Compile and data analysis
Tel.: +855 12 827664