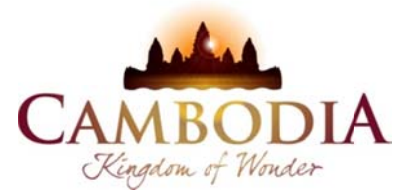




KINGDOM OF CAMBODIA
NATION RELIGION KING



TOURISM STATISTICS REPORT

August 2012

MINISTRY OF TOURISM

Statistics and Tourism Information Department

No. A3, Street 169, Sangkat Veal Vong, Khan 7 Makara, Phnom Penh, Cambodia.

Fax: +855 23 885003

E-mail: kong@mot.gov.kh

Web site: www.mot.gov.kh

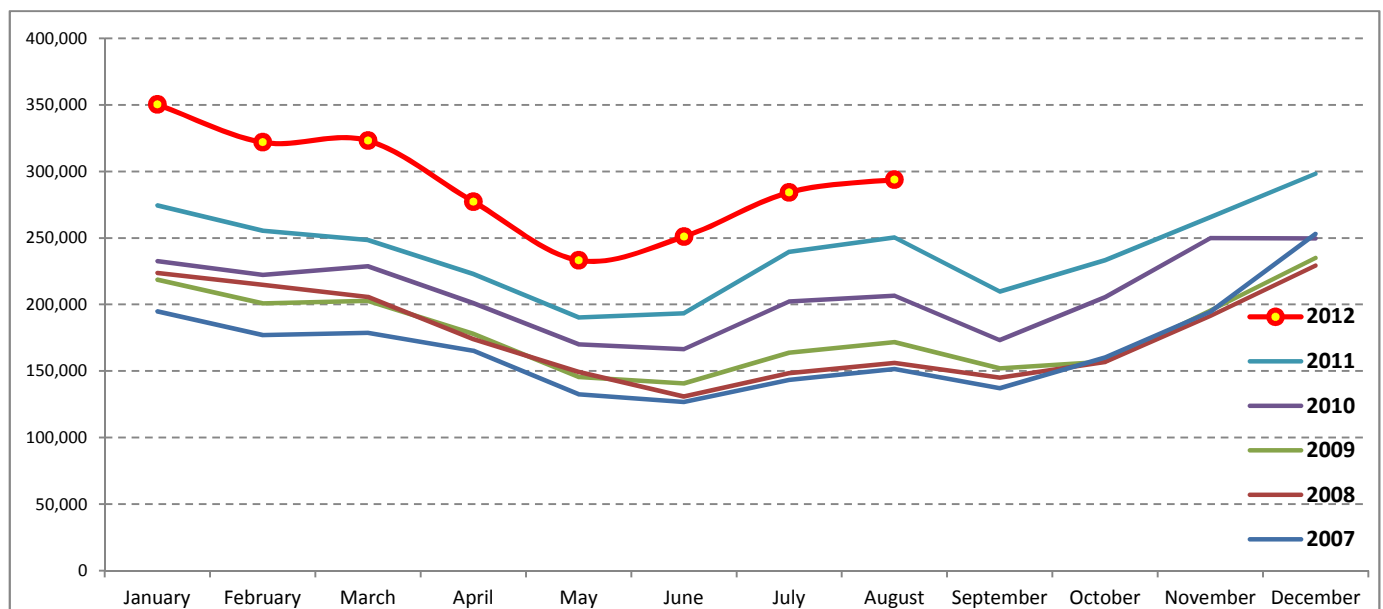
Tourism Highlights

International Tourist Arrivals, Average Length of Stay, Hotels Occupancy & Tourism Receipts 1993 - 2011

Years	Tourist Arrivals		Average Length	Hotels Occupancy	Tourism Receipts
	number	change (%)	of Stay (days)	(%)	(Million US\$)
1993	118,183	-	N/A	N/A	N/A
1994	176,617	49.4	N/A	N/A	N/A
1995	219,680	24.4	8.00	37.00	100
1996	260,489	18.6	7.50	40.00	118
1997	218,843	-16.0	6.40	30.00	103
1998	286,524	30.9	5.20	40.00	166
1999	367,743	28.3	5.50	44.00	190
2000	466,365	26.8	5.50	45.00	228
2001	604,919	29.7	5.50	48.00	304
2002	786,524	30.0	5.80	50.00	379
2003	701,014	-10.9	5.50	50.00	347
2004	1,055,202	50.5	6.30	52.00	578
2005	1,421,615	34.7	6.30	52.00	832
2006	1,700,041	19.6	6.50	54.79	1,049
2007	2,015,128	18.5	6.50	54.79	1,400
2008	2,125,465	5.5	6.65	62.68	1,595
2009	2,161,577	1.7	6.45	63.57	1,561
2010	2,508,289	16.0	6.45	65.74	1,786
2011	2,881,862	14.9	6.50	66.15	1,912

International tourist arrivals to Cambodia

Destination	Months	2007	2008	2009	2010	2011	2012	change (%) 2012*/11
Cambodia	Q1	550,813	644,205	622,288	683,692	778,467	995,210	27.8
<i>International tourist arrivals by all means of transportations</i>	January	194,932	223,581	218,691	232,590	274,471	350,257	27.6
	February	177,130	214,902	200,789	222,354	255,499	321,870	26.0
	March	178,751	205,722	202,808	228,748	248,497	323,083	30.0
	Q2	424,536	454,031	464,230	537,464	606,562	761,442	25.5
	April	165,347	173,903	177,955	200,965	223,032	277,304	24.3
	May	132,512	149,275	145,564	170,164	190,258	233,220	22.6
	June	126,677	130,853	140,711	166,335	193,272	250,918	29.8
	Q3	431,815	449,693	487,422	582,024	699,760	578,141	
	July	143,310	148,449	163,817	202,349	239,527	284,282	18.7
	August	151,478	156,098	171,668	206,563	250,429	293,859	17.3
	September	137,027	145,146	151,937	173,112	209,804		
	Q4	607,964	577,536	587,637	705,109	797,073	0	
October	160,235	156,718	157,105	205,515	233,190			
November	194,646	191,549	195,570	249,892	265,539			
December	253,083	229,269	234,962	249,702	298,344			
Total		2,015,128	2,125,465	2,161,577	2,508,289	2,881,862	2,334,793	24.5



Source: Statistics and Tourism Information Department, MOT

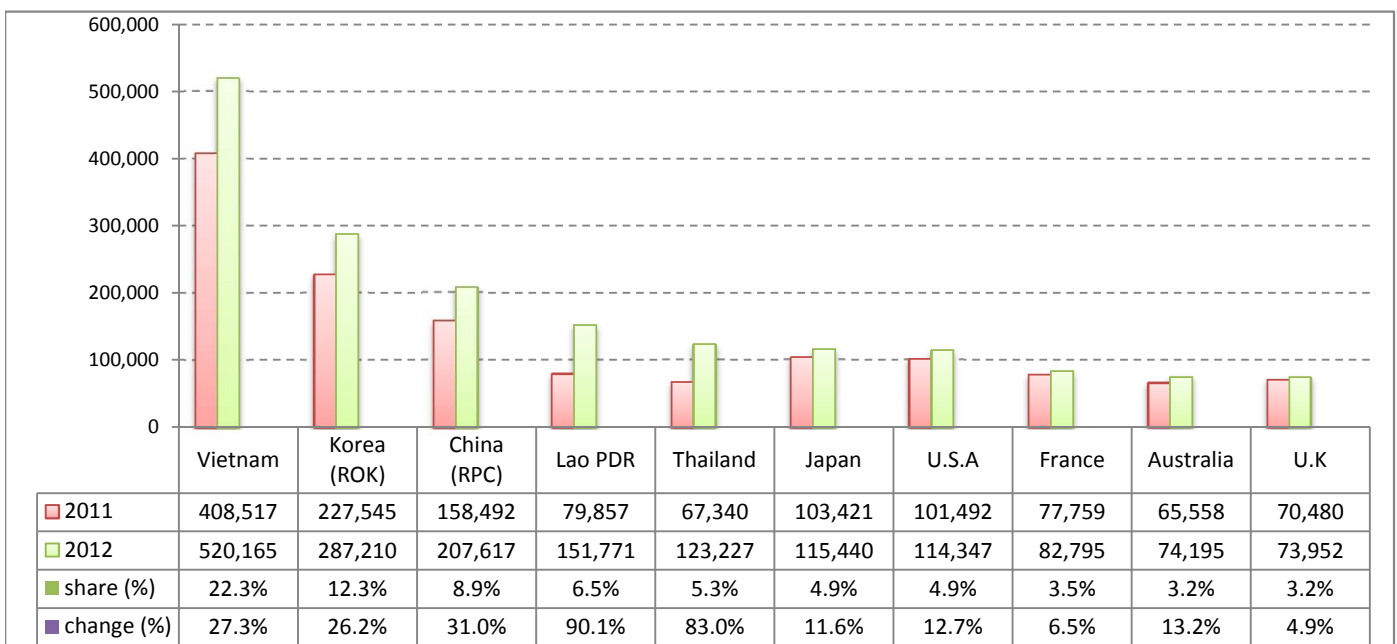
Executive Summary Report in the First Eight Months of 2012

I. International tourist arrivals to Cambodia in January - August 2012 was: **2,334,793**

II. Mode of arrivals

	visitors	share (%)
Air	1,113,244	47.7
Phnom Penh Int'l Airport	460,359	19.7
Siem Reap Int'l Airport	652,885	28.0
Land and Water ways	1,221,549	52.3
Land	1,168,006	50.0
Waterway	53,543	2.3
Total	2,334,793	100.0

III. Top ten markets arrivals in January - August 2012



IV. International tourist arrivals to Cambodia in January - August 2012

	Inbound tourism		share (%)		change (%)
	2011	2012	2011	2012	2012*/11
Air	954,381	1,113,244	50.9	47.7	16.6
Phnom Penh Int'l Airport	422,521	460,359	22.5	19.7	9.0
Siem Reap Int'l Airport	531,860	652,885	28.4	28.0	22.8
Land and Water ways	920,604	1,221,549	49.1	52.3	32.7
Land	864,826	1,168,006	46.1	50.0	35.1
Waterway	55,778	53,543	3.0	2.3	-4.0
Total	1,874,985	2,334,793	100.0	100.0	24.5

V. Remark: Percentage share of international tourist arrivals at destinations in January - August 2012

	Arrivals		share (%)		change (%)
	2011	2012	2011	2012	2012*/11
Phnom Penh & Other Destinations	826,753	969,170	44.1	41.5	17.2
Siem Reap Province	1,048,232	1,365,623	55.9	58.5	30.3
Total	1,874,985	2,334,793	100.0	100.0	24.5

VI. Outbound tourists departures in January - August 2012

	Outbound tourism		change (%)
	2011	2012	2012*/11
Cambodian outbound tourists	431,919	519,803	20.3
International outbound tourists	1,867,100	2,299,685	23.2

International Tourist Arrivals to Cambodia by Country of Residence in January - August 2012

(by all mean of transportations)

Regions Country of Residence	2011		2012			share		change	
			Purpose of Visit			Total	Female	(%)	(%)
			Holiday	Business	Other			2012*	2012*/11
GRAND TOTAL	1,874,985	2,142,385	107,321	85,087	2,334,793	1,058,928	100.0	24.5	
Asia and the Pacific	1,363,771	1,637,812	84,754	41,665	1,764,231	815,368	75.6	29.4	
ASEAN	707,759	933,815	21,949	24,922	980,686	456,730	42.0	38.6	
Brunei Darussalam	322	518	9	97	624	248	0.0	93.8	
Indonesia	10,046	12,344	1,651	313	14,308	4,792	0.6	42.4	
Lao PDR	79,857	151,269	68	434	151,771	103,246	6.5	90.1	
Malaysia	66,533	68,196	4,184	508	72,888	25,547	3.1	9.6	
Myanmar	2,808	2,546	409	183	3,138	1,284	0.1	11.8	
Philippines	42,959	58,103	4,153	731	62,987	37,692	2.7	46.6	
Singapore	29,377	30,009	1,326	243	31,578	10,968	1.4	7.5	
Thailand	67,340	111,467	5,658	6,102	123,227	56,013	5.3	83.0	
Vietnam	408,517	499,363	4,491	16,311	520,165	216,940	22.3	27.3	
Eastern Asia	561,028	614,537	55,426	6,845	676,808	315,340	29.0	20.6	
China (RPC)	158,492	173,468	32,226	1,923	207,617	94,947	8.9	31.0	
Hong Kong SAR	3,477	4,835	187	45	5,067	2,425	0.2	45.7	
Japan	103,421	108,111	5,546	1,783	115,440	50,588	4.9	11.6	
Korea (ROK)	227,545	274,998	10,182	2,030	287,210	141,315	12.3	26.2	
Mongolia	176	198	16	31	245	126	0.0	39.2	
Taiwan, China	67,917	52,927	7,269	1,033	61,229	25,939	2.6	-9.8	
Southern Asia	12,693	12,606	2,215	719	15,540	4,192	0.7	22.4	
Afghanistan	89	66	8	22	96	12	0.0	7.9	
Bangladesh	812	565	139	94	798	103	0.0	-1.7	
Bhutan	65	83	3	25	111	19	0.0	70.8	
India	9,610	9,919	1,502	392	11,813	3,469	0.5	22.9	
Nepal	703	797	107	64	968	252	0.0	37.7	
Pakistan	694	508	244	53	805	143	0.0	16.0	
Srilanka	720	668	212	69	949	194	0.0	31.8	
Western Asia	1,397	1,447	133	10	1,590	881	0.1	13.8	
Kazakhstan	864	1,090	105	8	1,203	618	0.1	39.2	
Uzbekistan	533	357	28	2	387	263	0.0	-27.4	
Oceania	75,962	72,649	4,306	8,633	85,588	36,694	3.7	12.7	
Australia	65,558	63,106	3,626	7,463	74,195	32,166	3.2	13.2	
Fiji	79	55	9	3	67	18	0.0	-15.2	
New Zealand	10,325	9,488	671	1,167	11,326	4,510	0.5	9.7	
Other Asia & the Pacific	4,932	2,758	725	536	4,019	1,531	0.2	-18.5	
Europe	356,277	364,866	14,275	18,705	397,846	170,304	17.0	11.7	
Northern Europe	103,081	100,919	4,465	1,825	107,209	41,299	4.6	4.0	
Denmark	6,664	6,408	180	109	6,697	2,712	0.3	0.5	
Finland	4,460	3,803	185	123	4,111	1,505	0.2	-7.8	
Iceland	247	379	14	5	398	149	0.0	61.1	
Ireland	5,754	5,654	255	87	5,996	2,430	0.3	4.2	
Norway	5,707	5,452	147	117	5,716	2,303	0.2	0.2	
Sweden	9,769	9,824	316	199	10,339	3,921	0.4	5.8	
United Kingdom	70,480	69,399	3,368	1,185	73,952	28,279	3.2	4.9	
Western Europe	159,480	149,682	6,938	15,513	172,133	71,928	7.4	7.9	
Austria	5,040	5,102	127	230	5,459	2,193	0.2	8.3	
Belgium	9,154	8,933	407	541	9,881	3,926	0.4	7.9	
France	77,759	65,859	4,289	12,647	82,795	35,352	3.5	6.5	
Germany	41,148	43,457	1,137	1,129	45,723	18,411	2.0	11.1	
Luxembourg	349	282	6	11	299	107	0.0	-14.3	
Monaco	57	35	0	0	35	19	0.0	-38.6	
Netherlands	15,217	15,324	489	330	16,143	6,485	0.7	6.1	
Switzerland	10,756	10,690	483	625	11,798	5,435	0.5	9.7	
Eastern Europe	55,741	75,035	1,067	316	76,418	39,408	3.3	37.1	
Bulgaria	256	375	7	6	388	207	0.0	51.6	
Czech Republic	2,091	2,583	52	17	2,652	1,131	0.1	26.8	
Estonia	600	526	13	11	550	240	0.0	-8.3	
Hungary	1,813	1,553	33	33	1,619	697	0.1	-10.7	
Lithuania	949	661	19	6	686	351	0.0	-27.7	
Poland	5,177	5,571	45	44	5,660	2,750	0.2	9.3	
Romania	664	718	35	10	763	401	0.0	14.9	
Russian Federation	40,888	59,176	713	148	60,037	31,700	2.6	46.8	
Slovakia	808	953	67	30	1,050	413	0.0	30.0	
Ukraine	2,495	2,919	83	11	3,013	1,518	0.1	20.8	

International Tourist Arrivals to Cambodia by Country of Residence in January - August 2012

(by all mean of transportations)

Regions Country of Residence	2011		2012			share		change	
			Purpose of Visit			Total	Female	(%)	(%)
			Holiday	Business	Other			2012*	2012*/11
GRAND TOTAL	1,874,985	2,142,385	107,321	85,087	2,334,793	1,058,928	100.0	24.5	
Southern Europe	33,581	36,822	924	510	38,256	16,070	1.6	13.9	
Croatia	307	452	13	4	469	234	0.0	52.8	
Greece	817	702	13	10	725	258	0.0	-11.3	
Italy	14,276	14,631	434	187	15,252	5,690	0.7	6.8	
Portugal	1,943	1,795	41	21	1,857	838	0.1	-4.4	
Serbia	268	214	17	3	234	100	0.0	-12.7	
Slovenia	492	611	17	2	630	257	0.0	28.0	
Spain	13,570	16,729	236	216	17,181	8,186	0.7	26.6	
Turkey	1,908	1,688	153	67	1,908	507	0.1	0.0	
Other Europe	4,394	2,408	881	541	3,830	1,599	0.2	-12.8	
Americas	145,165	130,149	7,644	24,451	162,244	69,567	6.9	11.8	
Argentina	4,149	3,254	23	79	3,356	1,609	0.1	-19.1	
Brazil	2,272	3,169	32	41	3,242	1,564	0.1	42.7	
Canada	28,658	27,949	1,316	3,082	32,347	14,082	1.4	12.9	
Chile	1,719	2,056	53	12	2,121	1,037	0.1	23.4	
Colombia	1,671	922	27	28	977	461	0.0	-41.5	
Costa Rica	153	172	4	5	181	95	0.0	18.3	
Ecuador	112	92	4	13	109	50	0.0	-2.7	
Mexico	2,134	2,532	44	27	2,603	1,273	0.1	22.0	
Peru	310	345	13	4	362	154	0.0	16.8	
United States	101,492	87,750	5,797	20,800	114,347	48,110	4.9	12.7	
Uruguay	490	389	0	16	405	217	0.0	-17.3	
Other Americas	2,005	1,519	331	344	2,194	915	0.1	9.4	
Africa	4,015	2,831	396	160	3,387	1,316	0.1	-15.6	
Cameroon	319	124	3	16	143	32	0.0	-55.2	
Congo	124	36	0	5	41	10	0.0	-66.9	
Ghana	338	97	9	5	111	11	0.0	-67.2	
Kenya	195	120	15	28	163	70	0.0	-16.4	
Liberia	313	69	2	1	72	19	0.0	-77.0	
Nigeria	349	216	157	19	392	62	0.0	12.3	
Sudan	27	26	4	2	32	7	0.0	18.5	
South Africa	1,867	1,875	141	29	2,045	959	0.1	9.5	
Uganda	246	39	6	8	53	23	0.0	-78.5	
Other Africa	237	229	59	47	335	123	0.0	41.4	
Middle East	5,757	6,727	252	106	7,085	2,373	0.3	23.1	
Egypt	100	93	9	12	114	22	0.0	14.0	
Iran	481	422	4	14	440	112	0.0	-8.5	
Iraq	57	56	2	3	61	11	0.0	7.0	
Israel	4,196	5,073	178	30	5,281	2,060	0.2	25.9	
Kuwait	379	446	0	2	448	18	0.0	18.2	
Oman	81	89	0	6	95	11	0.0	17.3	
Palestine	20	25	0	0	25	3	0.0	25.0	
Qatar	54	54	0	0	54	24	0.0	0.0	
Saudi Arabia	47	50	3	3	56	7	0.0	19.1	
United Arab Emirates	109	153	0	0	153	9	0.0	40.4	
Yemen	74	109	3	5	117	20	0.0	58.1	
Other Middle East	159	157	53	31	241	76	0.0	51.6	

Remark:

- Cambodian outbound tourist departures: 519,803
 - International outbound tourist departures: 2,299,685

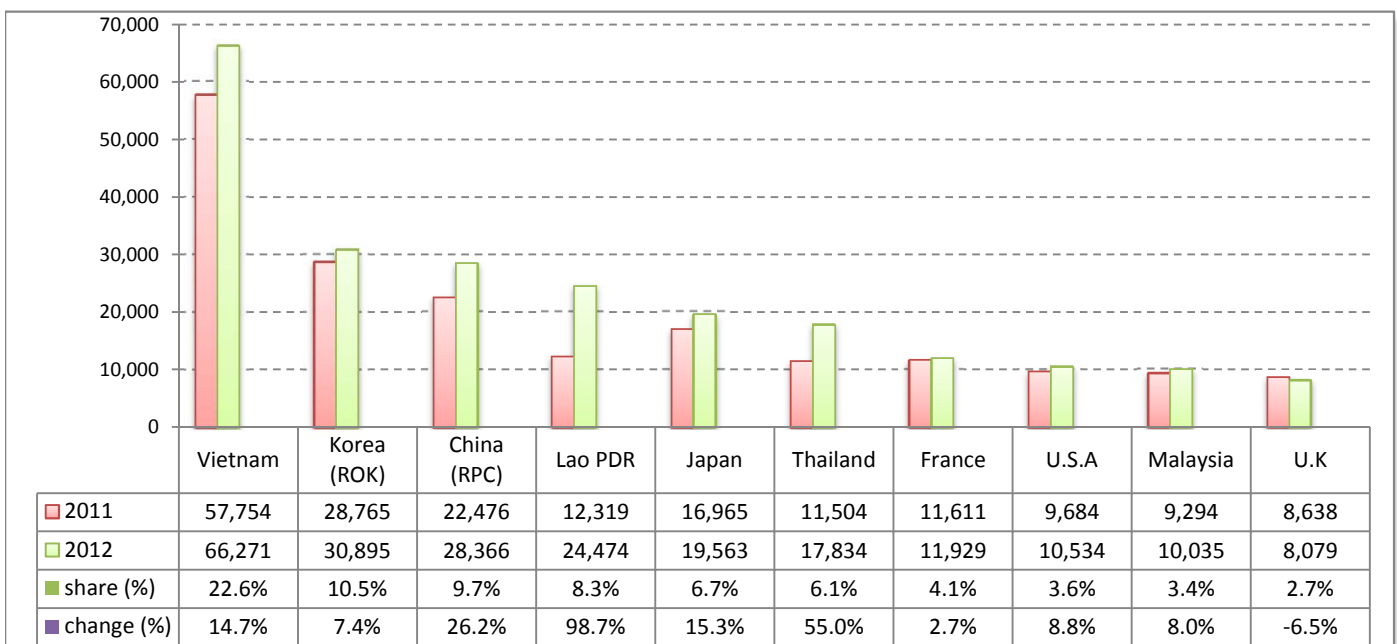
Executive Summary Report in August 2012

I. International tourist arrivals to Cambodia in August 2012 was: **293,859**

II. Mode of arrivals

	visitors	share (%)
Air	135,960	46.3
Phnom Penh Int'l Airport	57,016	19.4
Siem Reap Int'l Airport	78,944	26.9
Land and Water ways	157,899	53.7
Land	153,587	52.3
Waterway	4,312	1.5
Total	293,859	100.0

III. Top ten markets arrivals in August 2012



IV. International tourist arrivals to Cambodia in August 2012

	Inbound tourism		share (%)		change (%)
	2011	2012	2011	2012	2012*/11
Air	123,666	135,960	49.4	46.3	9.9
Phnom Penh Int'l Airport	55,182	57,016	22.0	19.4	3.3
Siem Reap Int'l Airport	68,484	78,944	27.3	26.9	15.3
Land and Water ways	126,763	157,899	50.6	53.7	24.6
Land	118,913	153,587	47.5	52.3	29.2
Waterway	7,850	4,312	3.1	1.5	-45.1
Total	250,429	293,859	100.0	100.0	17.3

V. Remark: Percentage share of international tourist arrivals at destinations in August 2012

	Arrivals		share (%)		change (%)
	2011	2012	2011	2012	2012*/11
Phnom Penh & Other Destinations	109,660	130,357	43.8	44.4	18.9
Siem Reap Province	140,769	163,502	56.2	55.6	16.1
Total	250,429	293,859	100.0	100.0	17.3

VI. Outbound tourists departures in August 2012

	Outbound tourism		change (%)
	2011	2012	2012*/11
Cambodian outbound tourists	74,871	64,786	-13.5
International outbound tourists	257,499	297,916	15.7

International Tourist Arrivals to Cambodia by Country of Residence in August 2012

(by all mean of transportations)

Regions Country of Residence	2011	2012			Total	Female	share	change
		Purpose of Visit					(%)	(%)
		Holiday	Business	Other			2012*	2012*/11
GRAND TOTAL	250,429	268,938	14,502	10,419	293,859	136,543	100.0	17.3
Asia and the Pacific	189,224	215,246	11,426	4,178	230,850	109,297	78.6	22.0
ASEAN (South-East Asia)	102,131	128,087	2,732	2,158	132,977	64,958	45.3	30.2
Brunei Darussalam	40	54	1	9	64	31	0.0	60.0
Indonesia	1,641	2,640	271	59	2,970	1,099	1.0	81.0
Lao PDR	12,319	24,390	10	74	24,474	16,334	8.3	98.7
Malaysia	9,294	9,486	493	56	10,035	3,553	3.4	8.0
Myanmar	320	168	35	28	231	98	0.1	-27.8
Philippines	5,937	6,842	473	102	7,417	4,498	2.5	24.9
Singapore	3,322	3,438	188	55	3,681	1,145	1.3	10.8
Thailand	11,504	16,450	717	667	17,834	7,873	6.1	55.0
Vietnam	57,754	64,619	544	1,108	66,271	30,327	22.6	14.7
North-East Asia	77,005	78,229	7,551	866	86,646	40,043	29.5	12.5
China (RPC)	22,476	23,813	4,312	241	28,366	13,304	9.7	26.2
Hong Kong SAR	297	331	33	1	365	145	0.1	22.9
Japan	16,965	18,481	825	257	19,563	9,082	6.7	15.3
Korea (ROK)	28,765	29,273	1,396	226	30,895	14,266	10.5	7.4
Mongolia	19	13	2	4	19	14	0.0	0.0
Taiwan, China	8,483	6,318	983	137	7,438	3,232	2.5	-12.3
Southern Asia	1,882	1,619	375	109	2,103	559	0.7	11.7
Afghanistan	8	7	0	1	8	0	0.0	0.0
Bangladesh	100	73	26	9	108	16	0.0	8.0
Bhutan	13	5	2	11	18	2	0.0	38.5
India	1,473	1,283	265	65	1,613	457	0.5	9.5
Nepal	85	134	22	10	166	36	0.1	95.3
Pakistan	74	45	35	8	88	24	0.0	18.9
Srilanka	129	72	25	5	102	24	0.0	-20.9
Western Asia	114	105	19	1	125	76	0.0	9.6
Kazakhstan	48	65	17	0	82	39	0.0	70.8
Uzbekistan	66	40	2	1	43	37	0.0	-34.8
Oceania	7,808	6,780	544	905	8,229	3,337	2.8	5.4
Australia	6,626	5,778	474	741	6,993	2,858	2.4	5.5
Fiji	5	9	0	0	9	3	0.0	80.0
New Zealand	1,177	993	70	164	1,227	476	0.4	4.2
Other Asia & the Pacific	284	426	205	139	770	324	0.3	171.1
Europe	45,227	42,007	2,025	3,562	47,594	20,889	16.2	5.2
Northern Europe	10,892	9,514	572	235	10,321	4,135	3.5	-5.2
Denmark	358	473	17	18	508	213	0.2	41.9
Finland	287	141	18	15	174	54	0.1	-39.4
Iceland	17	24	0	2	26	13	0.0	52.9
Ireland	883	754	35	7	796	381	0.3	-9.9
Norway	249	243	19	7	269	94	0.1	8.0
Sweden	460	396	42	31	469	162	0.2	2.0
United Kingdom	8,638	7,483	441	155	8,079	3,218	2.7	-6.5
Western Europe	20,488	17,179	942	3,083	21,204	9,097	7.2	3.5
Austria	534	464	13	26	503	225	0.2	-5.8
Belgium	1,102	1,083	52	97	1,232	501	0.4	11.8
France	11,611	8,669	620	2,640	11,929	5,303	4.1	2.7
Germany	3,908	4,160	147	200	4,507	1,860	1.5	15.3
Luxembourg	61	54	1	1	56	15	0.0	-8.2
Monaco	1	5	0	0	5	3	0.0	400.0
Netherlands	2,380	1,961	55	63	2,079	848	0.7	-12.6
Switzerland	891	783	54	56	893	342	0.3	0.2
Central / Eastern Europe	4,135	5,201	132	70	5,403	2,862	1.8	30.7
Bulgaria	19	30	1	3	34	16	0.0	78.9
Czech Republic	137	148	8	2	158	70	0.1	15.3
Estonia	14	21	0	3	24	12	0.0	71.4
Hungary	72	89	4	2	95	43	0.0	31.9
Lithuania	25	26	1	0	27	14	0.0	8.0
Poland	421	386	7	11	404	193	0.1	-4.0
Romania	58	67	2	2	71	26	0.0	22.4
Russian Federation	3,089	4,147	83	44	4,274	2,347	1.5	38.4
Slovakia	60	68	12	1	81	28	0.0	35.0
Ukraine	240	219	14	2	235	113	0.1	-2.1

International Tourist Arrivals to Cambodia by Country of Residence in August 2012

(by all mean of transportations)

Regions Country of Residence	2011	2012			Total	Female	share	change
		Purpose of Visit					(%)	(%)
		Holiday	Business	Other			2012*	2012*/11
GRAND TOTAL	250,429	268,938	14,502	10,419	293,859	136,543	100.0	17.3
Southern Europe	9,472	9,787	161	62	10,010	4,517	3.4	5.7
Croatia	31	83	2	1	86	47	0.0	177.4
Greece	118	169	2	0	171	70	0.1	44.9
Italy	3,442	3,732	65	20	3,817	1,529	1.3	10.9
Portugal	477	437	2	3	442	216	0.2	-7.3
Serbia	23	22	1	1	24	7	0.0	4.3
Slovenia	43	48	1	0	49	16	0.0	14.0
Spain	5,083	5,132	32	31	5,195	2,554	1.8	2.2
Turkey	255	164	56	6	226	78	0.1	-11.4
Other Europe	240	326	218	112	656	278	0.2	173.3
Americas	14,899	10,669	962	2,647	14,278	5,984	4.9	-4.2
Argentina	2,029	162	4	6	172	77	0.1	-91.5
Brazil	176	224	3	8	235	117	0.1	33.5
Canada	2,331	1,956	148	275	2,379	1,006	0.8	2.1
Chile	150	206	2	1	209	95	0.1	39.3
Colombia	124	132	13	4	149	68	0.1	20.2
Costa Rica	11	14	0	0	14	6	0.0	27.3
Ecuador	13	18	0	2	20	9	0.0	53.8
Mexico	175	200	4	1	205	104	0.1	17.1
Peru	32	34	2	1	37	27	0.0	15.6
United States	9,684	7,559	711	2,264	10,534	4,336	3.6	8.8
Uruguay	77	19	0	0	19	14	0.0	-75.3
Other Americas	97	145	75	85	305	125	0.1	214.4
Africa	485	368	52	23	443	175	0.2	-8.7
Cameroon	38	12	0	4	16	4	0.0	-57.9
Congo	15	3	0	0	3	1	0.0	-80.0
Ghana	34	9	2	0	11	1	0.0	-67.6
Kenya	32	22	0	7	29	15	0.0	-9.4
Liberia	21	4	1	1	6	2	0.0	-71.4
Nigeria	37	38	16	0	54	11	0.0	45.9
Sudan	4	2	1	0	3	0	0.0	-25.0
South Africa	246	234	17	3	254	113	0.1	3.3
Uganda	40	9	1	0	10	7	0.0	-75.0
Other Africa	18	35	14	8	57	21	0.0	216.7
Middle East	594	648	37	9	694	198	0.2	16.8
Egypt	12	6	2	0	8	0	0.0	-33.3
Iran	65	54	0	1	55	12	0.0	-15.4
Iraq	4	6	0	0	6	1	0.0	50.0
Israel	448	459	23	0	482	159	0.2	7.6
Kuwait	19	38	0	0	38	5	0.0	100.0
Oman	10	14	0	2	16	5	0.0	60.0
Palestine	0	7	0	0	7	0	0.0	
Qatar	4	3	0	0	3	0	0.0	-25.0
Saudi Arabia	2	7	0	0	7	1	0.0	250.0
United Arab Emirates	17	18	0	0	18	0	0.0	5.9
Yemen	4	11	0	0	11	1	0.0	175.0
Other Middle East	9	25	12	6	43	14	0.0	377.8

Remark:

- Cambodian outbound tourist departures: 64,786
- International outbound tourist departures: 297,916

COMPILED BY:

1. Mr. Kong Sopheareak

Director
Statistics & Tourism Information Department
Fax: +855 23 885003
E-mail: kong@mot.gov.kh

2. Mr. Horth Vanny

Chief of Tourism Statistics Office
Compile and data analysis
Tel.: +855 12 827664