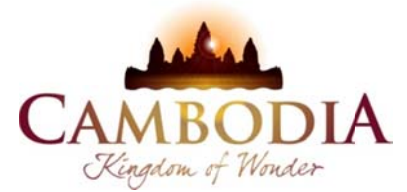




KINGDOM OF CAMBODIA
NATION RELIGION KING



TOURISM STATISTICS REPORT

January 2013

MINISTRY OF TOURISM

Statistics and Tourism Information Department

No. A3, Street 169, Sangkat Veal Vong, Khan 7 Makara, Phnom Penh, Cambodia.

Fax: +855 23 885003

E-mail: kong@mot.gov.kh

Web site: www.mot.gov.kh

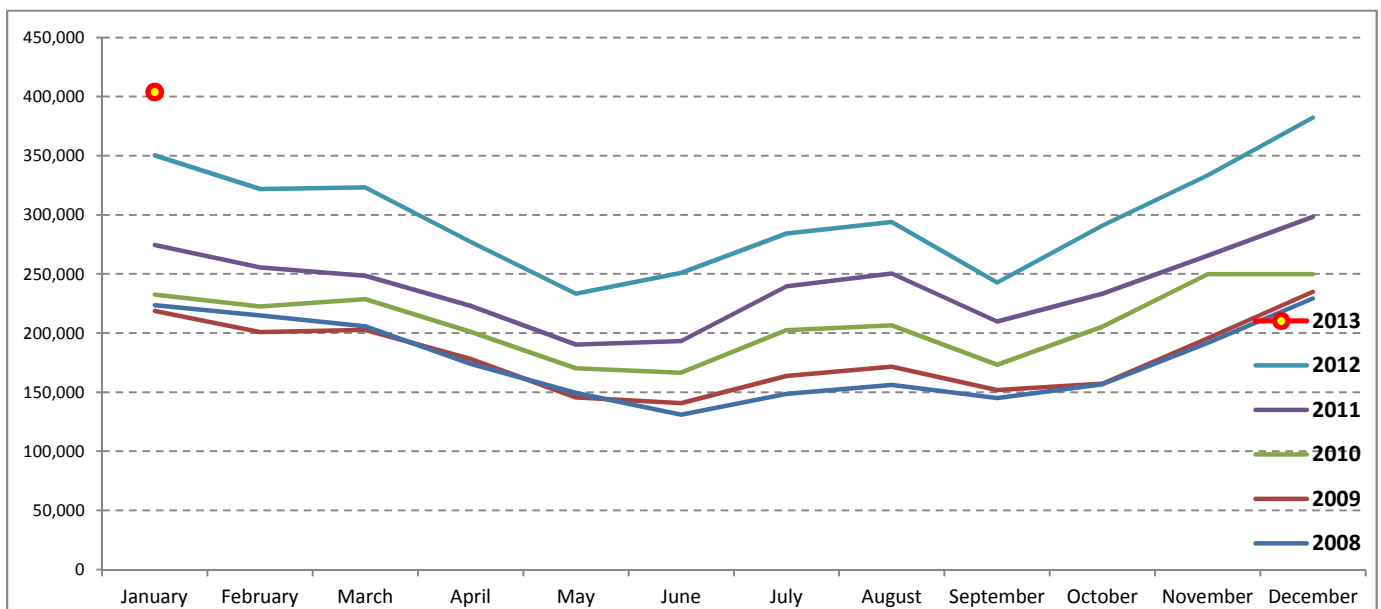
Tourism Highlights

International Tourist Arrivals, Average Length of Stay, Hotels Occupancy & Tourism Receipts 1993 - 2012

Years	Tourist Arrivals		Average Length	Hotels Occupancy	Tourism Receipts
	number	change (%)	of Stay (days)	(%)	(Million US\$)
1993	118,183	-	N/A	N/A	N/A
1994	176,617	49.4	N/A	N/A	N/A
1995	219,680	24.4	8.00	37.00	100
1996	260,489	18.6	7.50	40.00	118
1997	218,843	-16.0	6.40	30.00	103
1998	286,524	30.9	5.20	40.00	166
1999	367,743	28.3	5.50	44.00	190
2000	466,365	26.8	5.50	45.00	228
2001	604,919	29.7	5.50	48.00	304
2002	786,524	30.0	5.80	50.00	379
2003	701,014	-10.9	5.50	50.00	347
2004	1,055,202	50.5	6.30	52.00	578
2005	1,421,615	34.7	6.30	52.00	832
2006	1,700,041	19.6	6.50	54.79	1,049
2007	2,015,128	18.5	6.50	54.79	1,400
2008	2,125,465	5.5	6.65	62.68	1,595
2009	2,161,577	1.7	6.45	63.57	1,561
2010	2,508,289	16.0	6.45	65.74	1,786
2011	2,881,862	14.9	6.50	66.15	1,912
2012	3,584,307	24.4	6.30	68.49	2,210

International tourist arrivals to Cambodia

Destination	Months	2008	2009	2010	2011	2012	2013	change (%) 2013*/12
Cambodia	Q1	644,205	622,288	683,692	778,467	995,210	404,106	
<i>International tourist arrivals</i>	January	223,581	218,691	232,590	274,471	350,257	404,106	15.4
<i>by all means of transportations</i>	February	214,902	200,789	222,354	255,499	321,870		
	March	205,722	202,808	228,748	248,497	323,083		
	Q2	454,031	464,230	537,464	606,562	761,442	0	
	April	173,903	177,955	200,965	223,032	277,304		
	May	149,275	145,564	170,164	190,258	233,220		
	June	130,853	140,711	166,335	193,272	250,918		
	Q3	449,693	487,422	582,024	699,760	820,888	0	
	July	148,449	163,817	202,349	239,527	284,282		
	August	156,098	171,668	206,563	250,429	293,859		
	September	145,146	151,937	173,112	209,804	242,747		
	Q4	577,536	587,637	705,109	797,073	1,006,767	0	
	October	156,718	157,105	205,515	233,190	290,959		
	November	191,549	195,570	249,892	265,539	333,482		
	December	229,269	234,962	249,702	298,344	382,326		
	Total	2,125,465	2,161,577	2,508,289	2,881,862	3,584,307	404,106	15.4

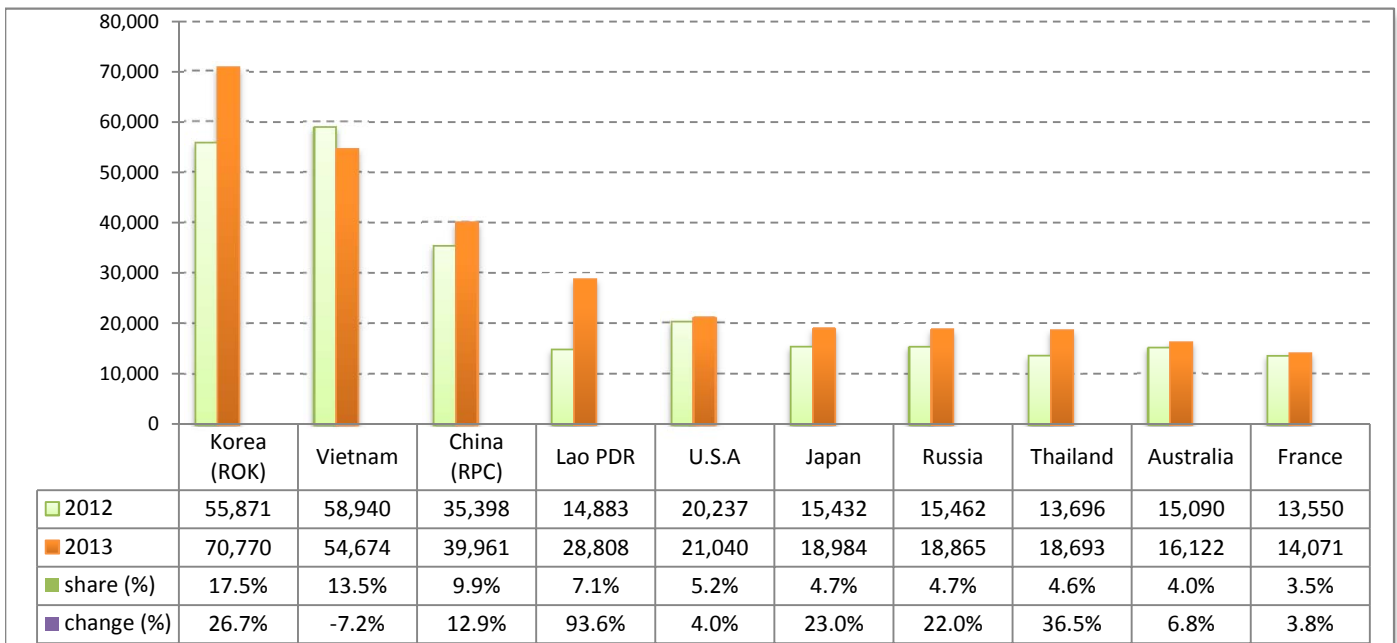


I. International tourist arrivals to Cambodia in January 2013 was: **404,106**

II. Mode of arrivals

	arrivals	share (%)
Air	215,210	53.3
Phnom Penh Int'l Airport	72,549	18.0
Siem Reap Int'l Airport	142,661	35.3
Land and Water ways	188,896	46.7
Land	179,273	44.4
Waterway	9,623	2.4
Total	404,106	100.0

III. Top ten markets arrivals in January 2013



IV. International tourist arrivals to Cambodia in January 2013

	Inbound tourism		share (%)		change (%)
	2012	2013	2012	2013	2013*/12
Air	185,499	215,210	53.0	53.3	16.0
Phnom Penh Int'l Airport	65,956	72,549	18.8	18.0	10.0
Siem Reap Int'l Airport	119,543	142,661	34.1	35.3	19.3
Land and Water ways	164,758	188,896	47.0	46.7	14.7
Land	153,385	179,273	43.8	44.4	16.9
Waterway	11,373	9,623	3.2	2.4	-15.4
Total	350,257	404,106	100.0	100.0	15.4

V. Remark: Percentage share of international tourist arrivals at destinations in January 2013

	Arrivals		share (%)		change (%)
	2012	2013	2012	2013	2013*/12
Phnom Penh & Other Destinations	126,112	155,492	36.0	38.5	23.3
Siem Reap Province	224,145	248,614	64.0	61.5	10.9
Total	350,257	404,106	100.0	100.0	15.4

VI. Outbound tourists departures in January 2013

	Outbound tourism		change (%)
	2012	2013	2013*/12
Cambodian outbound tourists	71,541	71,720	0.3
International outbound tourists	356,884	413,103	15.8

International Tourist Arrivals to Cambodia by Country of Residence in January 2013

(by all mean of transportations)

Regions Country of Residence	2012		2013			share		change
		Purpose of Visit	Total	Female	share (%)	change (%)		
							Holiday	Business
GRAND TOTAL	350,257	386,106	14,966	3,034	404,106	193,061	100.0	15.4
Asia and the Pacific	244,199	273,413	11,447	1,520	286,380	142,200	70.9	17.3
ASEAN (South-East Asia)	108,468	122,084	3,194	724	126,002	62,629	31.2	16.2
Brunei Darussalam	61	26	1	10	37	11	0.0	-39.3
Indonesia	1,434	1,922	314	26	2,262	795	0.6	57.7
Lao PDR	14,883	28,777	17	14	28,808	18,446	7.1	93.6
Malaysia	8,515	8,772	492	17	9,281	3,038	2.3	9.0
Myanmar	402	269	45	15	329	136	0.1	-18.2
Philippines	7,568	7,304	663	95	8,062	4,893	2.0	6.5
Singapore	2,969	3,682	164	10	3,856	1,214	1.0	29.9
Thailand	13,696	17,429	925	339	18,693	7,897	4.6	36.5
Vietnam	58,940	53,903	573	198	54,674	26,199	13.5	-7.2
North-East Asia	115,922	131,305	7,149	504	138,958	70,213	34.4	19.9
China (RPC)	35,398	36,008	3,840	113	39,961	20,072	9.9	12.9
Hong Kong SAR	629	577	20	0	597	297	0.1	-5.1
Japan	15,432	17,802	956	226	18,984	8,930	4.7	23.0
Korea (ROK)	55,871	69,212	1,395	163	70,770	37,102	17.5	26.7
Mongolia	42	42	0	0	42	17	0.0	0.0
Taiwan, China	8,550	7,664	938	2	8,604	3,795	2.1	0.6
Southern Asia	1,872	1,829	372	90	2,291	623	0.6	22.4
Afghanistan	21	18	0	2	20	5	0.0	-4.8
Bangladesh	103	87	35	6	128	26	0.0	24.3
Bhutan	11	9	1	0	10	2	0.0	-9.1
India	1,471	1,506	262	51	1,819	510	0.5	23.7
Nepal	76	106	18	8	132	44	0.0	73.7
Pakistan	90	41	33	19	93	15	0.0	3.3
Srilanka	100	62	23	4	89	21	0.0	-11.0
Western Asia	364	456	30	0	486	245	0.1	33.5
Kazakhstan	296	410	27	0	437	218	0.1	47.6
Uzbekistan	68	46	3	0	49	27	0.0	-27.9
Oceania	17,319	17,484	672	180	18,336	8,395	4.5	5.9
Australia	15,090	15,391	579	152	16,122	7,396	4.0	6.8
Fiji	9	8	0	1	9	3	0.0	0.0
New Zealand	2,220	2,085	93	27	2,205	996	0.5	-0.7
Other Asia & the Pacific	254	255	30	22	307	95	0.1	20.9
Europe	74,993	81,760	2,235	835	84,830	36,257	21.0	13.1
Northern Europe	19,525	19,843	692	197	20,732	7,776	5.1	6.2
Denmark	1,422	1,354	29	12	1,395	571	0.3	-1.9
Finland	1,058	1,199	35	8	1,242	473	0.3	17.4
Iceland	52	81	4	3	88	30	0.0	69.2
Ireland	851	931	34	8	973	356	0.2	14.3
Norway	1,204	1,251	21	10	1,282	526	0.3	6.5
Sweden	2,882	3,096	65	27	3,188	1,180	0.8	10.6
United Kingdom	12,056	11,931	504	129	12,564	4,640	3.1	4.2
Western Europe	30,598	32,142	1,135	498	33,775	13,972	8.4	10.4
Austria	1,202	1,491	28	21	1,540	603	0.4	28.1
Belgium	1,471	1,459	67	19	1,545	592	0.4	5.0
France	13,550	13,079	678	314	14,071	6,084	3.5	3.8
Germany	8,353	10,043	209	94	10,346	4,091	2.6	23.9
Luxembourg	52	38	1	0	39	17	0.0	-25.0
Monaco	6	8	0	0	8	3	0.0	33.3
Netherlands	3,180	3,103	90	31	3,224	1,358	0.8	1.4
Switzerland	2,784	2,921	62	19	3,002	1,224	0.7	7.8
Central / Eastern Europe	19,206	23,668	225	59	23,952	12,089	5.9	24.7
Bulgaria	85	123	0	1	124	56	0.0	45.9
Czech Republic	610	666	1	6	673	275	0.2	10.3
Estonia	124	220	5	0	225	91	0.1	81.5
Hungary	430	501	4	3	508	237	0.1	18.1
Lithuania	161	231	4	0	235	111	0.1	46.0
Poland	1,260	1,688	8	4	1,700	856	0.4	34.9
Romania	190	166	7	0	173	97	0.0	-8.9
Russian Federation	15,462	18,667	160	38	18,865	9,671	4.7	22.0
Slovakia	194	261	25	6	292	119	0.1	50.5
Ukraine	690	1,145	11	1	1,157	576	0.3	67.7

International Tourist Arrivals to Cambodia by Country of Residence in January 2013

(by all mean of transportations)

Regions Country of Residence	2012	2013			Total	Female	share	change
	Purpose of Visit			(%)			(%)	
	Holiday	Business	Other	2013*			2013*/12	
GRAND TOTAL	350,257	386,106	14,966	3,034	404,106	193,061	100.0	15.4
Southern Europe	5,422	5,871	165	68	6,104	2,336	1.5	12.6
Croatia	109	127	2	1	130	62	0.0	19.3
Greece	121	106	4	0	110	33	0.0	-9.1
Italy	2,998	3,057	70	30	3,157	1,129	0.8	5.3
Portugal	260	307	11	4	322	159	0.1	23.8
Serbia	71	94	3	2	99	56	0.0	39.4
Slovenia	130	261	25	6	292	119	0.1	124.6
Spain	1,399	1,395	34	22	1,451	605	0.4	3.7
Turkey	334	524	16	3	543	173	0.1	62.6
Other Europe	242	236	18	13	267	84	0.1	10.3
Americas	29,182	29,107	1,180	625	30,912	13,839	7.6	5.9
Argentina	853	1,172	3	8	1,183	603	0.3	38.7
Brazil	787	1,017	6	3	1,026	485	0.3	30.4
Canada	6,241	6,114	244	61	6,419	2,793	1.6	2.9
Chile	316	383	10	2	395	215	0.1	25.0
Colombia	135	219	6	3	228	103	0.1	68.9
Costa Rica	54	63	1	0	64	30	0.0	18.5
Ecuador	9	25	3	0	28	11	0.0	211.1
Mexico	331	263	9	2	274	125	0.1	-17.2
Peru	52	27	4	1	32	18	0.0	-38.5
United States	20,237	19,629	880	531	21,040	9,363	5.2	4.0
Uruguay	26	37	1	3	41	21	0.0	57.7
Other Americas	141	158	13	11	182	72	0.0	29.1
Africa	540	493	79	39	611	261	0.2	13.1
Cameroon	23	11	0	7	18	6	0.0	-21.7
Congo	4	2	1	1	4	1	0.0	0.0
Ghana	14	26	2	2	30	8	0.0	114.3
Kenya	34	11	2	2	15	10	0.0	-55.9
Liberia	9	3	0	1	4	1	0.0	-55.6
Nigeria	39	20	41	0	61	8	0.0	56.4
Sudan	4	5	0	1	6	1	0.0	50.0
South Africa	379	356	28	18	402	193	0.1	6.1
Uganda	7	3	1	5	9	3	0.0	28.6
Other Africa	27	56	4	2	62	30	0.0	129.6
Middle East	1,343	1,333	25	15	1,373	504	0.3	2.2
Egypt	15	17	4	0	21	4	0.0	40.0
Iran	65	57	3	0	60	24	0.0	-7.7
Iraq	4	6	0	0	6	1	0.0	50.0
Israel	1,105	1,068	17	5	1,090	446	0.3	-1.4
Kuwait	81	96	0	7	103	4	0.0	27.2
Oman	17	12	0	0	12	1	0.0	-29.4
Palestine	0	7	0	0	7	1	0.0	
Qatar	2	8	0	0	8	0	0.0	300.0
Saudi Arabia	11	9	0	0	9	3	0.0	-18.2
United Arab Emirates	11	11	0	0	11	1	0.0	0.0
Yemen	11	5	0	1	6	0	0.0	-45.5
Other Middle East	21	37	1	2	40	19	0.0	90.5

Remark:

- Cambodian outbound tourist departures: 71,720
 - International outbound tourist departures: 413,103

COMPILED BY:

1. Mr. Kong Sopheareak

Director
Statistics & Tourism Information Department
Fax: +855 23 885003
E-mail: kong@mot.gov.kh

2. Mr. Horth Vanny

Chief of Tourism Statistics Office
Compile and data analysis
Tel.: +855 12 827664