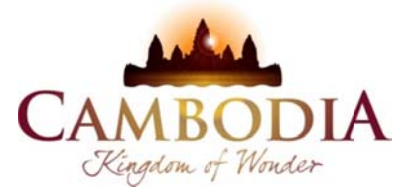




KINGDOM OF CAMBODIA
NATION RELIGION KING



TOURISM STATISTICS REPORT

March 2013

MINISTRY OF TOURISM

Statistics and Tourism Information Department

No. A3, Street 169, Sangkat Veal Vong, Khan 7 Makara, Phnom Penh, Cambodia.

Fax: +855 23 885003

E-mail: kong@mot.gov.kh

Web site: www.mot.gov.kh

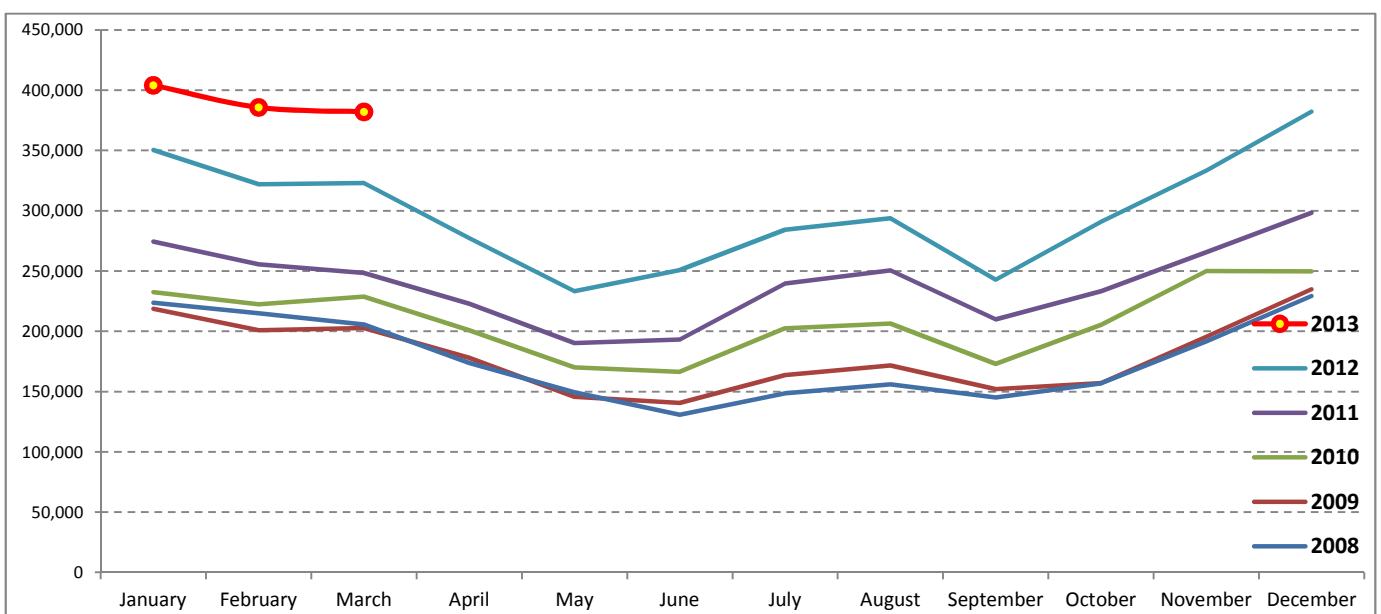
Tourism Highlights

International Tourist Arrivals, Average Length of Stay, Hotels Occupancy & Tourism Receipts 1993 - 2012

Years	Tourist Arrivals		Average Length	Hotels Occupancy	Tourism Receipts
	number	change (%)	of Stay (days)	(%)	(Million US\$)
1993	118,183	-	N/A	N/A	N/A
1994	176,617	49.4	N/A	N/A	N/A
1995	219,680	24.4	8.00	37.00	100
1996	260,489	18.6	7.50	40.00	118
1997	218,843	-16.0	6.40	30.00	103
1998	286,524	30.9	5.20	40.00	166
1999	367,743	28.3	5.50	44.00	190
2000	466,365	26.8	5.50	45.00	228
2001	604,919	29.7	5.50	48.00	304
2002	786,524	30.0	5.80	50.00	379
2003	701,014	-10.9	5.50	50.00	347
2004	1,055,202	50.5	6.30	52.00	578
2005	1,421,615	34.7	6.30	52.00	832
2006	1,700,041	19.6	6.50	54.79	1,049
2007	2,015,128	18.5	6.50	54.79	1,400
2008	2,125,465	5.5	6.65	62.68	1,595
2009	2,161,577	1.7	6.45	63.57	1,561
2010	2,508,289	16.0	6.45	65.74	1,786
2011	2,881,862	14.9	6.50	66.15	1,912
2012	3,584,307	24.4	6.30	68.49	2,210

International tourist arrivals to Cambodia

Destination	Months	2008	2009	2010	2011	2012	2013	change (%) 2013*/12
Cambodia	Q1	644,205	622,288	683,692	778,467	995,210	1,172,072	17.8
<i>International tourist arrivals</i>	January	223,581	218,691	232,590	274,471	350,257	404,106	15.4
<i>by all means of</i>	February	214,902	200,789	222,354	255,499	321,870	385,760	19.8
<i>transportations</i>	March	205,722	202,808	228,748	248,497	323,083	382,206	18.3
	Q2	454,031	464,230	537,464	606,562	761,442	0	
	April	173,903	177,955	200,965	223,032	277,304		
	May	149,275	145,564	170,164	190,258	233,220		
	June	130,853	140,711	166,335	193,272	250,918		
	Q3	449,693	487,422	582,024	699,760	820,888	0	
	July	148,449	163,817	202,349	239,527	284,282		
	August	156,098	171,668	206,563	250,429	293,859		
	September	145,146	151,937	173,112	209,804	242,747		
	Q4	577,536	587,637	705,109	797,073	1,006,767	0	
	October	156,718	157,105	205,515	233,190	290,959		
	November	191,549	195,570	249,892	265,539	333,482		
	December	229,269	234,962	249,702	298,344	382,326		
	Total	2,125,465	2,161,577	2,508,289	2,881,862	3,584,307	1,172,072	17.8



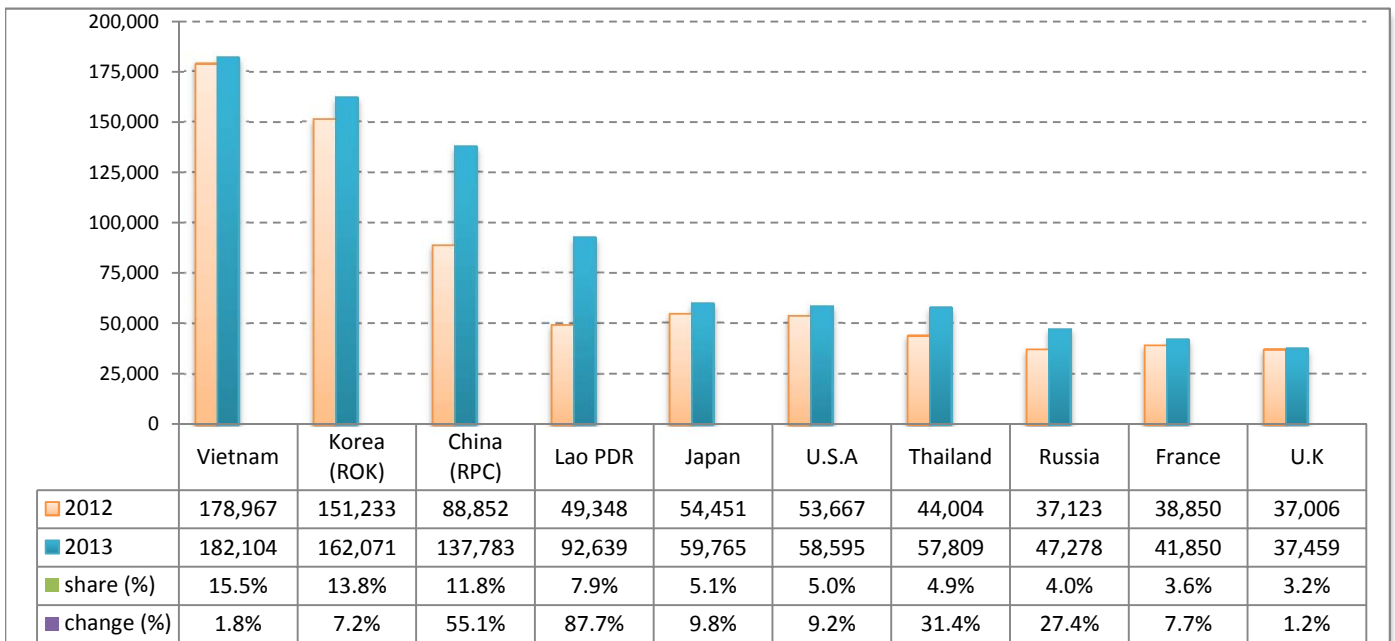
Executive Summary Report in the First Quarter 2013

I. International tourist arrivals to Cambodia in January - March 2013 was: **1,172,072**

II. Mode of arrivals

	arrivals	share (%)
Air	611,160	52.1
Phnom Penh Int'l Airport	218,912	18.7
Siem Reap Int'l Airport	392,248	33.5
Land and Water ways	560,912	47.9
Land	535,718	45.7
Waterway	25,194	2.1
Total	1,172,072	100.0

III. Top ten markets arrivals in January - March 2013



IV. International tourist arrivals to Cambodia in January - March 2013

	Inbound tourism		share (%)		change (%)
	2012	2013	2012	2013	2013*/12
Air	513,756	611,160	51.6	52.1	19.0
Phnom Penh Int'l Airport	187,408	218,912	18.8	18.7	16.8
Siem Reap Int'l Airport	326,348	392,248	32.8	33.5	20.2
Land and Water ways	481,454	560,912	48.4	47.9	16.5
Land	445,420	535,718	44.8	45.7	20.3
Waterway	36,034	25,194	3.6	2.1	-30.1
Total	995,210	1,172,072	100.0	100.0	17.8

V. Remark: Percentage share of international tourist arrivals at destinations in January - March 2013

	Arrivals		share (%)		change (%)
	2012	2013	2012	2013	2013*/12
Phnom Penh & Other Destinations	355,336	477,343	35.7	40.7	34.3
Siem Reap Province	639,874	694,729	64.3	59.3	8.6
Total	995,210	1,172,072	100.0	100.0	17.8

VI. Outbound tourists departures in January - March 2013

	Outbound tourism		change (%)
	2012	2013	2013*/12
Cambodian outbound tourists	188,267	201,544	7.1
International outbound tourists	986,757	1,182,291	19.8

International Tourist Arrivals to Cambodia by Country of Residence in January - March 2013

(by all mean of transportations)

Regions Country of Residence	2012		2013			share		change	
			Purpose of Visit			Total	Female	(%)	(%)
			Holiday	Business	Other			2013*	2013*/12
GRAND TOTAL	995,210	1,118,947	45,305	7,820	1,172,072	551,018	100.0	17.8	
Asia and the Pacific	704,195	804,865	35,987	4,164	845,016	407,783	72.1	20.0	
ASEAN (South-East Asia)	337,249	395,911	8,981	1,922	406,814	198,921	34.7	20.6	
Brunei Darussalam	288	175	4	11	190	79	0.0	-34.0	
Indonesia	4,320	5,342	875	48	6,265	2,071	0.5	45.0	
Lao PDR	49,348	92,526	40	73	92,639	59,133	7.9	87.7	
Malaysia	25,732	26,916	1,797	64	28,777	10,141	2.5	11.8	
Myanmar	1,261	845	122	42	1,009	431	0.1	-20.0	
Philippines	22,464	24,469	1,456	184	26,109	15,406	2.2	16.2	
Singapore	10,865	11,292	579	41	11,912	4,067	1.0	9.6	
Thailand	44,004	54,855	2,121	833	57,809	25,392	4.9	31.4	
Vietnam	178,967	179,491	1,987	626	182,104	82,201	15.5	1.8	
North-East Asia	320,622	362,272	24,230	1,500	388,002	187,895	33.1	21.0	
China (RPC)	88,852	122,490	14,764	529	137,783	67,173	11.8	55.1	
Hong Kong SAR	1,733	2,291	48	0	2,339	1,184	0.2	35.0	
Japan	54,451	56,560	2,694	511	59,765	26,334	5.1	9.8	
Korea (ROK)	151,233	157,797	3,828	446	162,071	81,985	13.8	7.2	
Mongolia	128	121	12	5	138	56	0.0	7.8	
Taiwan, China	24,225	23,013	2,884	9	25,906	11,163	2.2	6.9	
Southern Asia	5,481	5,606	861	248	6,715	1,787	0.6	22.5	
Afghanistan	50	54	0	4	58	9	0.0	16.0	
Bangladesh	304	334	63	27	424	55	0.0	39.5	
Bhutan	36	22	3	7	32	7	0.0	-11.1	
India	4,208	4,576	579	122	5,277	1,499	0.5	25.4	
Nepal	278	255	41	45	341	83	0.0	22.7	
Pakistan	291	125	79	24	228	38	0.0	-21.6	
Srilanka	314	240	96	19	355	96	0.0	13.1	
Western Asia	891	1,244	61	3	1,308	702	0.1	46.8	
Kazakhstan	739	1,075	56	2	1,133	595	0.1	53.3	
Uzbekistan	152	169	5	1	175	107	0.0	15.1	
Oceania	38,525	38,624	1,713	441	40,778	17,937	3.5	5.8	
Australia	33,928	34,202	1,462	396	36,060	15,937	3.1	6.3	
Fiji	30	22	2	2	26	8	0.0	-13.3	
New Zealand	4,567	4,400	249	43	4,692	1,992	0.4	2.7	
Other Asia & the Pacific	1,427	1,208	141	50	1,399	541	0.1	-2.0	
Europe	207,460	227,079	5,957	2,053	235,089	102,539	20.1	13.3	
Northern Europe	56,216	56,539	1,873	442	58,854	23,193	5.0	4.7	
Denmark	3,728	4,006	95	24	4,125	1,693	0.4	10.6	
Finland	2,533	2,908	77	26	3,011	1,073	0.3	18.9	
Iceland	133	180	10	4	194	77	0.0	45.9	
Ireland	2,334	2,532	105	24	2,661	1,021	0.2	14.0	
Norway	3,332	3,714	77	37	3,828	1,688	0.3	14.9	
Sweden	7,150	7,357	153	66	7,576	2,926	0.6	6.0	
United Kingdom	37,006	35,842	1,356	261	37,459	14,715	3.2	1.2	
Western Europe	88,128	93,034	3,001	1,276	97,311	40,850	8.3	10.4	
Austria	3,393	3,756	70	44	3,870	1,560	0.3	14.1	
Belgium	4,522	4,406	187	52	4,645	1,797	0.4	2.7	
France	38,860	39,231	1,806	813	41,850	18,191	3.6	7.7	
Germany	26,895	30,011	535	227	30,773	12,648	2.6	14.4	
Luxembourg	137	188	2	2	192	78	0.0	40.1	
Monaco	10	15	1	0	16	6	0.0	60.0	
Netherlands	7,552	8,194	241	73	8,508	3,525	0.7	12.7	
Switzerland	6,759	7,233	159	65	7,457	3,045	0.6	10.3	
Central / Eastern Europe	47,407	60,499	583	140	61,222	31,368	5.2	29.1	
Bulgaria	215	298	3	2	303	149	0.0	40.9	
Czech Republic	1,755	2,049	13	17	2,079	867	0.2	18.5	
Estonia	409	573	15	8	596	241	0.1	45.7	
Hungary	1,172	1,423	12	10	1,445	643	0.1	23.3	
Lithuania	462	781	6	0	787	383	0.1	70.3	
Poland	3,467	4,932	30	14	4,976	2,468	0.4	43.5	
Romania	413	500	21	1	522	268	0.0	26.4	
Russian Federation	37,123	46,787	424	67	47,278	24,756	4.0	27.4	
Slovakia	576	734	35	15	784	312	0.1	36.1	
Ukraine	1,815	2,422	24	6	2,452	1,281	0.2	35.1	

International Tourist Arrivals to Cambodia by Country of Residence in January - March 2013

(by all mean of transportations)

Regions Country of Residence	2012		2013			share		change	
			Purpose of Visit			Total	Female	(%)	(%)
			Holiday	Business	Other			2013*	2013*/12
GRAND TOTAL	995,210	1,118,947	45,305	7,820	1,172,072	551,018	100.0	17.8	
Southern Europe	14,593	15,903	424	160	16,487	6,681	1.4	13.0	
Croatia	254	295	6	3	304	151	0.0	19.7	
Greece	300	323	9	2	334	101	0.0	11.3	
Italy	7,615	7,826	167	73	8,066	3,078	0.7	5.9	
Portugal	658	1,021	27	8	1,056	536	0.1	60.5	
Serbia	133	196	9	6	211	113	0.0	58.6	
Slovenia	395	456	28	6	490	208	0.0	24.1	
Spain	4,291	4,357	90	45	4,492	1,954	0.4	4.7	
Turkey	947	1,429	88	17	1,534	540	0.1	62.0	
Other Europe	1,116	1,104	76	35	1,215	447	0.1	8.9	
Americas	78,402	81,679	3,118	1,509	86,306	38,470	7.4	10.1	
Argentina	1,963	2,644	9	11	2,664	1,360	0.2	35.7	
Brazil	1,785	2,310	17	11	2,338	1,156	0.2	31.0	
Canada	17,635	17,889	628	136	18,653	8,229	1.6	5.8	
Chile	1,151	1,562	25	4	1,591	848	0.1	38.2	
Colombia	292	413	14	8	435	216	0.0	49.0	
Costa Rica	104	83	3	2	88	41	0.0	-15.4	
Ecuador	35	74	4	3	81	42	0.0	131.4	
Mexico	894	983	21	2	1,006	476	0.1	12.5	
Peru	151	135	9	2	146	71	0.0	-3.3	
United States	53,667	54,971	2,326	1,298	58,595	25,712	5.0	9.2	
Uruguay	72	83	4	4	91	42	0.0	26.4	
Other Americas	653	532	58	28	618	277	0.1	-5.4	
Africa	1,403	1,401	164	65	1,630	706	0.1	16.2	
Cameroon	69	29	3	10	42	8	0.0	-39.1	
Congo	22	9	1	2	12	4	0.0	-45.5	
Ghana	58	35	4	4	43	13	0.0	-25.9	
Kenya	68	63	4	8	75	43	0.0	10.3	
Liberia	35	11	0	1	12	2	0.0	-65.7	
Nigeria	167	72	75	1	148	11	0.0	-11.4	
Sudan	13	11	0	1	12	1	0.0	-7.7	
South Africa	831	1,042	63	22	1,127	550	0.1	35.6	
Uganda	17	11	1	7	19	7	0.0	11.8	
Other Africa	123	118	13	9	140	67	0.0	13.8	
Middle East	3,750	3,923	79	29	4,031	1,520	0.3	7.5	
Egypt	51	45	12	3	60	8	0.0	17.6	
Iran	176	195	7	0	202	63	0.0	14.8	
Iraq	25	37	0	0	37	9	0.0	48.0	
Israel	3,054	3,082	52	8	3,142	1,337	0.3	2.9	
Kuwait	168	298	0	7	305	13	0.0	81.5	
Oman	28	40	0	0	40	4	0.0	42.9	
Palestine	8	18	1	0	19	5	0.0	137.5	
Qatar	34	49	0	1	50	27	0.0	47.1	
Saudi Arabia	24	39	1	1	41	9	0.0	70.8	
United Arab Emirates	47	26	0	0	26	2	0.0	-44.7	
Yemen	28	21	1	2	24	2	0.0	-14.3	
Other Middle East	107	73	5	7	85	41	0.0	-20.6	

Remark:

- Cambodian outbound tourist departures: 201,544
 - International outbound tourist departures: 1,182,291

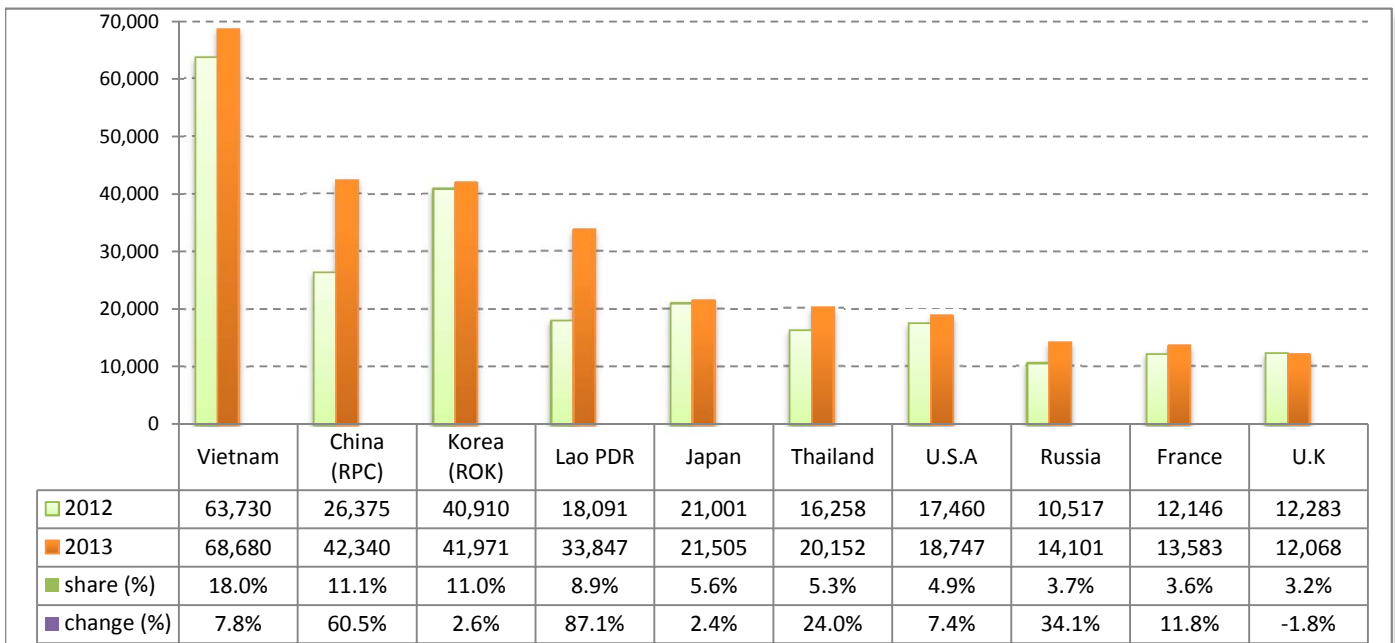
Executive Summary Report in March 2013

I. International tourist arrivals to Cambodia in March 2013 was: **382,206**

II. Mode of arrivals

	arrivals	share (%)
Air	192,497	50.4
Phnom Penh Int'l Airport	77,375	20.2
Siem Reap Int'l Airport	115,122	30.1
Land and Water ways	189,709	49.6
Land	182,409	47.7
Waterway	7,300	1.9
Total	382,206	100.0

III. Top ten markets arrivals in March 2013



IV. International tourist arrivals to Cambodia in March 2013

	Inbound tourism		share (%)		change (%)
	2012	2013	2012	2013	2013*/12
Air	160,109	192,497	49.6	50.4	20.2
Phnom Penh Int'l Airport	62,330	77,375	19.3	20.2	24.1
Siem Reap Int'l Airport	97,779	115,122	30.3	30.1	17.7
Land and Water ways	162,974	189,709	50.4	49.6	16.4
Land	149,740	182,409	46.3	47.7	21.8
Waterway	13,234	7,300	4.1	1.9	-44.8
Total	323,083	382,206	100.0	100.0	18.3

V. Remark: Percentage share of international tourist arrivals at destinations in March 2013

	Arrivals		share (%)		change (%)
	2012	2013	2012	2013	2013*/12
Phnom Penh & Other Destinations	124,486	167,460	38.5	43.8	34.5
Siem Reap Province	198,597	214,746	61.5	56.2	8.1
Total	323,083	382,206	100.0	100.0	18.3

VI. Outbound tourists departures in March 2013

	Outbound tourism		change (%)
	2012	2013	2013*/12
Cambodian outbound tourists	57,684	64,565	11.9
International outbound tourists	318,776	382,680	20.0

International Tourist Arrivals to Cambodia by Country of Residence in March 2013

(by all mean of transportations)

Regions Country of Residence	2012	2013			Total	Female	share	change
		Purpose of Visit					(%)	(%)
		Holiday	Business	Other			2013*	2013*/12
GRAND TOTAL	323,083	364,380	15,337	2,489	382,206	173,681	100.0	18.3
Asia and the Pacific	232,122	267,012	12,261	1,342	280,615	128,687	73.4	20.9
ASEAN (South-East Asia)	121,898	147,360	2,590	594	150,544	70,493	39.4	23.5
Brunei Darussalam	180	95	3	1	99	44	0.0	-45.0
Indonesia	1,429	1,978	265	12	2,255	749	0.6	57.8
Lao PDR	18,091	33,811	13	23	33,847	21,587	8.9	87.1
Malaysia	9,284	10,627	484	27	11,138	4,105	2.9	20.0
Myanmar	487	272	34	14	320	124	0.1	-34.3
Philippines	7,856	9,026	405	54	9,485	5,482	2.5	20.7
Singapore	4,583	4,394	165	9	4,568	1,579	1.2	-0.3
Thailand	16,258	19,370	561	221	20,152	8,926	5.3	24.0
Vietnam	63,730	67,787	660	233	68,680	27,897	18.0	7.8
North-East Asia	96,352	106,184	8,722	504	115,410	52,477	30.2	19.8
China (RPC)	26,375	36,546	5,541	253	42,340	18,799	11.1	60.5
Hong Kong SAR	732	1,177	16	0	1,193	634	0.3	63.0
Japan	21,001	20,414	949	142	21,505	9,338	5.6	2.4
Korea (ROK)	40,910	40,580	1,288	103	41,971	20,359	11.0	2.6
Mongolia	49	39	7	5	51	21	0.0	4.1
Taiwan, China	7,285	7,428	921	1	8,350	3,326	2.2	14.6
Southern Asia	1,909	1,927	242	95	2,264	572	0.6	18.6
Afghanistan	13	21	0	0	21	1	0.0	61.5
Bangladesh	99	125	20	16	161	14	0.0	62.6
Bhutan	7	6	1	4	11	3	0.0	57.1
India	1,429	1,545	142	41	1,728	477	0.5	20.9
Nepal	106	83	13	24	120	24	0.0	13.2
Pakistan	116	46	28	2	76	9	0.0	-34.5
Srilanka	139	101	38	8	147	44	0.0	5.8
Western Asia	279	350	13	3	366	201	0.1	31.2
Kazakhstan	226	277	11	2	290	154	0.1	28.3
Uzbekistan	53	73	2	1	76	47	0.0	43.4
Oceania	10,829	10,849	603	136	11,588	4,809	3.0	7.0
Australia	9,577	9,563	508	127	10,198	4,230	2.7	6.5
Fiji	10	9	0	0	9	3	0.0	-10.0
New Zealand	1,242	1,277	95	9	1,381	576	0.4	11.2
Other Asia & the Pacific	855	342	91	10	443	135	0.1	-48.2
Europe	64,606	69,991	1,997	661	72,649	32,400	19.0	12.4
Northern Europe	17,594	17,250	630	134	18,014	7,325	4.7	2.4
Denmark	1,130	1,176	27	8	1,211	508	0.3	7.2
Finland	645	742	27	11	780	275	0.2	20.9
Iceland	45	55	1	0	56	30	0.0	24.4
Ireland	686	738	49	7	794	311	0.2	15.7
Norway	970	1,255	32	14	1,301	616	0.3	34.1
Sweden	1,835	1,761	26	17	1,804	692	0.5	-1.7
United Kingdom	12,283	11,523	468	77	12,068	4,893	3.2	-1.8
Western Europe	28,458	29,532	990	429	30,951	13,159	8.1	8.8
Austria	904	963	14	15	992	391	0.3	9.7
Belgium	1,735	1,428	75	24	1,527	607	0.4	-12.0
France	12,146	12,694	608	281	13,583	5,904	3.6	11.8
Germany	9,778	9,941	161	63	10,165	4,344	2.7	4.0
Luxembourg	37	85	1	0	86	40	0.0	132.4
Monaco	2	3	1	0	4	2	0.0	100.0
Netherlands	2,025	2,440	84	20	2,544	1,027	0.7	25.6
Switzerland	1,831	1,978	46	26	2,050	844	0.5	12.0
Central / Eastern Europe	13,456	17,866	203	44	18,113	9,578	4.7	34.6
Bulgaria	49	101	0	0	101	54	0.0	106.1
Czech Republic	523	644	5	2	651	267	0.2	24.5
Estonia	115	163	2	2	167	67	0.0	45.2
Hungary	311	391	2	5	398	177	0.1	28.0
Lithuania	165	280	1	0	281	147	0.1	70.3
Poland	965	1,442	14	6	1,462	709	0.4	51.5
Romania	135	144	10	1	155	81	0.0	14.8
Russian Federation	10,517	13,922	159	20	14,101	7,679	3.7	34.1
Slovakia	205	207	4	6	217	74	0.1	5.9
Ukraine	471	572	6	2	580	323	0.2	23.1

International Tourist Arrivals to Cambodia by Country of Residence in March 2013

(by all mean of transportations)

Regions Country of Residence	2012		2013			Total	Female	share	change
	Purpose of Visit			2013*	2013*/12				
	Holiday	Business	Other			(%)	(%)		
GRAND TOTAL	323,083	364,380	15,337	2,489	382,206	173,681	100.0	18.3	
Southern Europe	4,387	5,038	132	45	5,215	2,213	1.4	18.9	
Croatia	84	82	4	1	87	37	0.0	3.6	
Greece	83	132	3	2	137	49	0.0	65.1	
Italy	1,987	2,178	55	19	2,252	919	0.6	13.3	
Portugal	227	415	9	2	426	213	0.1	87.7	
Serbia	33	36	4	1	41	21	0.0	24.2	
Slovenia	123	65	1	0	66	31	0.0	-46.3	
Spain	1,555	1,676	33	15	1,724	773	0.5	10.9	
Turkey	295	454	23	5	482	170	0.1	63.4	
Other Europe	711	305	42	9	356	125	0.1	-49.9	
Americas	24,904	25,725	997	467	27,189	11,865	7.1	9.2	
Argentina	447	732	3	2	737	370	0.2	64.9	
Brazil	421	570	5	2	577	288	0.2	37.1	
Canada	5,309	5,463	211	43	5,717	2,507	1.5	7.7	
Chile	302	464	1	0	465	241	0.1	54.0	
Colombia	102	125	3	3	131	71	0.0	28.4	
Costa Rica	23	9	0	1	10	4	0.0	-56.5	
Ecuador	14	22	0	0	22	13	0.0	57.1	
Mexico	356	452	7	0	459	222	0.1	28.9	
Peru	57	74	4	1	79	34	0.0	38.6	
United States	17,460	17,611	729	407	18,747	8,006	4.9	7.4	
Uruguay	29	16	1	1	18	6	0.0	-37.9	
Other Americas	384	187	33	7	227	103	0.1	-40.9	
Africa	449	441	48	11	500	212	0.1	11.4	
Cameroon	19	8	1	2	11	1	0.0	-42.1	
Congo	4	4	0	0	4	2	0.0	0.0	
Ghana	26	2	0	1	3	1	0.0	-88.5	
Kenya	16	30	0	2	32	13	0.0	100.0	
Liberia	14	6	0	0	6	1	0.0	-57.1	
Nigeria	50	22	17	0	39	1	0.0	-22.0	
Sudan	5	1	0	0	1	0	0.0	-80.0	
South Africa	240	327	23	1	351	170	0.1	46.3	
Uganda	5	6	0	1	7	2	0.0	40.0	
Other Africa	70	35	7	4	46	21	0.0	-34.3	
Middle East	1,002	1,211	34	8	1,253	517	0.3	25.0	
Egypt	14	15	3	1	19	2	0.0	35.7	
Iran	66	71	2	0	73	17	0.0	10.6	
Iraq	10	23	0	0	23	7	0.0	130.0	
Israel	720	920	23	3	946	436	0.2	31.4	
Kuwait	34	73	0	0	73	6	0.0	114.7	
Oman	10	14	0	0	14	3	0.0	40.0	
Palestine	6	8	1	0	9	2	0.0	50.0	
Qatar	31	35	0	1	36	27	0.0	16.1	
Saudi Arabia	4	9	1	0	10	1	0.0	150.0	
United Arab Emirates	25	12	0	0	12	1	0.0	-52.0	
Yemen	15	8	1	0	9	2	0.0	-40.0	
Other Middle East	67	23	3	3	29	13	0.0	-56.7	

Remark:

- Cambodian outbound tourist departures: 64,565
- International outbound tourist departures: 382,680

COMPILED BY:

1. Mr. Kong Sopheareak

Director
Statistics & Tourism Information Department
Fax: +855 23 885003
E-mail: kong@mot.gov.kh

2. Mr. Horth Vanny

Chief of Tourism Statistics Office
Compile and data analysis
Tel.: +855 12 827664