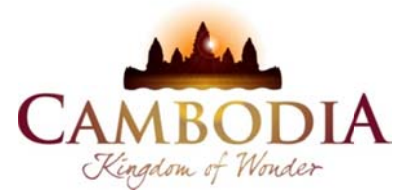




KINGDOM OF CAMBODIA  
NATION RELIGION KING



# TOURISM STATISTICS REPORT

# May 2013

**MINISTRY OF TOURISM**

Statistics and Tourism Information Department

No. A3, Street 169, Sangkat Veal Vong, Khan 7 Makara, Phnom Penh, Cambodia.

Fax: +855 23 885003

E-mail: [kong@mot.gov.kh](mailto:kong@mot.gov.kh)

Web site: [www.mot.gov.kh](http://www.mot.gov.kh)

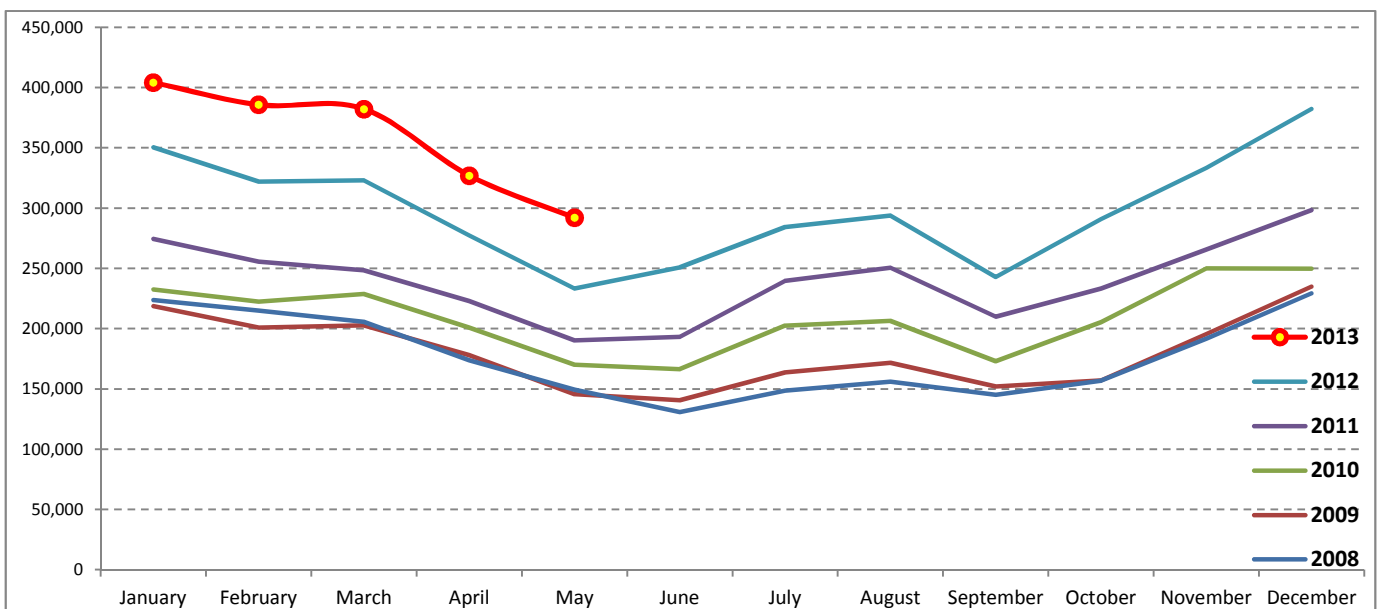
## Tourism Highlights

### International Tourist Arrivals, Average Length of Stay, Hotels Occupancy & Tourism Receipts 1993 - 2012

Years	Tourist Arrivals		Average Length of Stay (days)	Hotels Occupancy (%)	Tourism Receipts (Million US\$)
	number	change (%)			
1993	118,183	-	N/A	N/A	N/A
1994	176,617	49.4	N/A	N/A	N/A
1995	219,680	24.4	8.00	37.00	100
1996	260,489	18.6	7.50	40.00	118
1997	218,843	-16.0	6.40	30.00	103
1998	286,524	30.9	5.20	40.00	166
1999	367,743	28.3	5.50	44.00	190
2000	466,365	26.8	5.50	45.00	228
2001	604,919	29.7	5.50	48.00	304
2002	786,524	30.0	5.80	50.00	379
2003	701,014	-10.9	5.50	50.00	347
2004	1,055,202	50.5	6.30	52.00	578
2005	1,421,615	34.7	6.30	52.00	832
2006	1,700,041	19.6	6.50	54.79	1,049
2007	2,015,128	18.5	6.50	54.79	1,400
2008	2,125,465	5.5	6.65	62.68	1,595
2009	2,161,577	1.7	6.45	63.57	1,561
2010	2,508,289	16.0	6.45	65.74	1,786
2011	2,881,862	14.9	6.50	66.15	1,912
2012	3,584,307	24.4	6.30	68.49	2,210

### International tourist arrivals to Cambodia

Destination	Months	2008	2009	2010	2011	2012	2013	change (%) 2013*/12
<b>Cambodia</b>	<b>Q1</b>	<b>644,205</b>	<b>622,288</b>	<b>683,692</b>	<b>778,467</b>	<b>995,210</b>	<b>1,172,072</b>	<b>17.8</b>
<i>International tourist arrivals by all means of transportations</i>	January	223,581	218,691	232,590	274,471	350,257	404,106	15.4
	February	214,902	200,789	222,354	255,499	321,870	385,760	19.8
	March	205,722	202,808	228,748	248,497	323,083	382,206	18.3
	<b>Q2</b>	<b>454,031</b>	<b>464,230</b>	<b>537,464</b>	<b>606,562</b>	<b>761,442</b>	<b>619,115</b>	
	April	173,903	177,955	200,965	223,032	277,304	327,000	17.9
	May	149,275	145,564	170,164	190,258	233,220	292,115	25.3
	June	130,853	140,711	166,335	193,272	250,918		
	<b>Q3</b>	<b>449,693</b>	<b>487,422</b>	<b>582,024</b>	<b>699,760</b>	<b>820,888</b>	<b>0</b>	
	July	148,449	163,817	202,349	239,527	284,282		
	August	156,098	171,668	206,563	250,429	293,859		
	September	145,146	151,937	173,112	209,804	242,747		
	<b>Q4</b>	<b>577,536</b>	<b>587,637</b>	<b>705,109</b>	<b>797,073</b>	<b>1,006,767</b>	<b>0</b>	
	October	156,718	157,105	205,515	233,190	290,959		
	November	191,549	195,570	249,892	265,539	333,482		
	December	229,269	234,962	249,702	298,344	382,326		
	<b>Total</b>	<b>2,125,465</b>	<b>2,161,577</b>	<b>2,508,289</b>	<b>2,881,862</b>	<b>3,584,307</b>	<b>1,791,187</b>	<b>19.0</b>



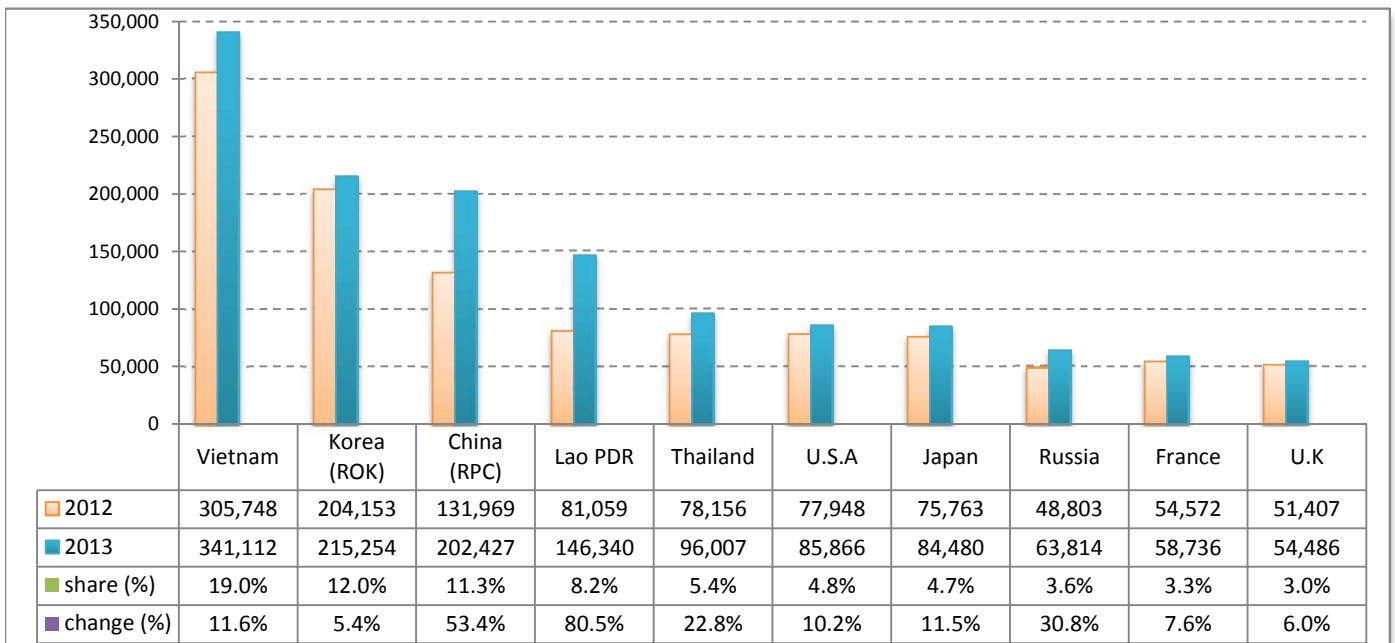
## Executive Summary Report in the First Five Months 2013

I. International tourist arrivals to Cambodia in January - May 2013 was: **1,791,187**

### II. Mode of arrivals

	arrivals	share (%)
<b>Air</b>	<b>882,763</b>	<b>49.3</b>
Phnom Penh Int'l Airport	342,651	19.1
Siem Reap Int'l Airport	540,112	30.2
<b>Land and Water ways</b>	<b>908,424</b>	<b>50.7</b>
Land	872,941	48.7
Waterway	35,483	2.0
<b>Total</b>	<b>1,791,187</b>	<b>100.0</b>

### III. Top ten markets arrivals in January - May 2013



### IV. International tourist arrivals to Cambodia in January - May 2013

	Inbound tourism		share (%)		change (%)
	2012	2013	2012	2013	2013*/12
<b>Air</b>	<b>744,436</b>	<b>882,763</b>	<b>49.4</b>	<b>49.3</b>	<b>18.6</b>
Phnom Penh Int'l Airport	288,927	342,651	19.2	19.1	18.6
Siem Reap Int'l Airport	455,509	540,112	30.3	30.2	18.6
<b>Land and Water ways</b>	<b>761,298</b>	<b>908,424</b>	<b>50.6</b>	<b>50.7</b>	<b>19.3</b>
Land	719,382	872,941	47.8	48.7	21.3
Waterway	41,916	35,483	2.8	2.0	-15.3
<b>Total</b>	<b>1,505,734</b>	<b>1,791,187</b>	<b>100.0</b>	<b>100.0</b>	<b>19.0</b>

### V. Remark: Percentage share of international tourist arrivals at destinations in January - May 2013

	Arrivals		share (%)		change (%)
	2012	2013	2012	2013	2013*/12
Phnom Penh & Other Destinations	564,283	794,971	37.5	44.4	40.9
Siem Reap Province	941,451	996,216	62.5	55.6	5.8
<b>Total</b>	<b>1,505,734</b>	<b>1,791,187</b>	<b>100.0</b>	<b>100.0</b>	<b>19.0</b>

### VI. Outbound tourism in January - May 2013

	Outbound tourism		change (%)
	2012	2013	2013*/12
Cambodian outbound tourists	322,877	367,257	13.7
International outbound tourists	1,508,287	1,807,377	19.8

## International Tourist Arrivals to Cambodia by Country of Residence in January - May 2013

(by all mean of transportations)

Regions Country of Residence	2012		2013			share		change	
			Purpose of Visit			Total	Female	2013*	2013*/12
			Holiday	Business	Other				
<b>GRAND TOTAL</b>	<b>1,505,734</b>	<b>1,699,234</b>	<b>78,240</b>	<b>13,713</b>	<b>1,791,187</b>	<b>837,419</b>	<b>100.0</b>	<b>19.0</b>	
<b>Asia and the Pacific</b>	<b>1,103,130</b>	<b>1,268,023</b>	<b>62,948</b>	<b>7,583</b>	<b>1,338,554</b>	<b>640,288</b>	<b>74.7</b>	<b>21.3</b>	
<b>ASEAN (South-East Asia)</b>	<b>579,348</b>	<b>694,407</b>	<b>16,401</b>	<b>3,708</b>	<b>714,516</b>	<b>349,755</b>	<b>39.9</b>	<b>23.3</b>	
Brunei Darussalam	380	238	6	21	265	108	0.0	-30.3	
Indonesia	7,775	9,270	1,515	109	10,894	3,432	0.6	40.1	
Lao PDR	81,059	146,119	68	153	146,340	94,351	8.2	80.5	
Malaysia	44,055	46,237	3,367	95	49,699	17,478	2.8	12.8	
Myanmar	2,163	1,765	251	125	2,141	960	0.1	-1.0	
Philippines	40,740	44,217	2,935	323	47,475	28,011	2.7	16.5	
Singapore	19,272	19,522	998	63	20,583	6,933	1.1	6.8	
Thailand	78,156	90,666	3,901	1,440	96,007	41,589	5.4	22.8	
Vietnam	305,748	336,373	3,360	1,379	341,112	156,893	19.0	11.6	
<b>North-East Asia</b>	<b>454,399</b>	<b>502,612</b>	<b>41,808</b>	<b>2,529</b>	<b>546,949</b>	<b>258,811</b>	<b>30.5</b>	<b>20.4</b>	
China (RPC)	131,969	176,339	25,164	924	202,427	96,451	11.3	53.4	
Hong Kong SAR	3,449	3,089	79	4	3,172	1,572	0.2	-8.0	
Japan	75,763	79,034	4,592	854	84,480	35,918	4.7	11.5	
Korea (ROK)	204,153	207,588	6,944	722	215,254	107,169	12.0	5.4	
Mongolia	170	169	15	11	195	89	0.0	14.7	
Taiwan, China	38,895	36,393	5,014	14	41,421	17,612	2.3	6.5	
<b>Southern Asia</b>	<b>9,695</b>	<b>9,363</b>	<b>1,543</b>	<b>392</b>	<b>11,298</b>	<b>2,946</b>	<b>0.6</b>	<b>16.5</b>	
Afghanistan	64	139	0	6	145	15	0.0	126.6	
Bangladesh	461	641	115	57	813	99	0.0	76.4	
Bhutan	68	27	4	9	40	8	0.0	-41.2	
India	7,384	7,418	1,027	196	8,641	2,456	0.5	17.0	
Nepal	647	428	83	58	569	140	0.0	-12.1	
Pakistan	542	246	153	35	434	67	0.0	-19.9	
Srilanka	529	464	161	31	656	161	0.0	24.0	
<b>Western Asia</b>	<b>1,178</b>	<b>1,529</b>	<b>101</b>	<b>5</b>	<b>1,635</b>	<b>898</b>	<b>0.1</b>	<b>38.8</b>	
Kazakhstan	918	1,263	92	4	1,359	718	0.1	48.0	
Uzbekistan	260	266	9	1	276	180	0.0	6.2	
<b>Oceania</b>	<b>55,932</b>	<b>58,513</b>	<b>2,914</b>	<b>831</b>	<b>62,258</b>	<b>27,104</b>	<b>3.5</b>	<b>11.3</b>	
Australia	48,567	51,273	2,469	734	54,476	23,806	3.0	12.2	
Fiji	40	31	5	4	40	12	0.0	0.0	
New Zealand	7,325	7,209	440	93	7,742	3,286	0.4	5.7	
Other Asia & the Pacific	2,578	1,599	181	118	1,898	774	0.1	-26.4	
<b>Europe</b>	<b>281,842</b>	<b>306,647</b>	<b>9,656</b>	<b>3,407</b>	<b>319,710</b>	<b>138,838</b>	<b>17.8</b>	<b>13.4</b>	
<b>Northern Europe</b>	<b>76,488</b>	<b>78,091</b>	<b>3,055</b>	<b>775</b>	<b>81,921</b>	<b>32,221</b>	<b>4.6</b>	<b>7.1</b>	
Denmark	4,891	5,290	144	53	5,487	2,261	0.3	12.2	
Finland	3,281	3,535	124	40	3,699	1,305	0.2	12.7	
Iceland	203	264	15	5	284	121	0.0	39.9	
Ireland	3,511	3,692	173	45	3,910	1,534	0.2	11.4	
Norway	4,374	4,560	111	62	4,733	2,039	0.3	8.2	
Sweden	8,821	8,957	243	122	9,322	3,583	0.5	5.7	
United Kingdom	51,407	51,793	2,245	448	54,486	21,378	3.0	6.0	
<b>Western Europe</b>	<b>119,568</b>	<b>125,257</b>	<b>4,839</b>	<b>2,098</b>	<b>132,194</b>	<b>54,922</b>	<b>7.4</b>	<b>10.6</b>	
Austria	4,235	4,510	101	53	4,664	1,840	0.3	10.1	
Belgium	6,249	6,125	300	96	6,521	2,479	0.4	4.4	
France	54,572	54,543	2,888	1,305	58,736	25,136	3.3	7.6	
Germany	35,352	38,953	868	392	40,213	16,472	2.2	13.8	
Luxembourg	199	247	3	2	252	106	0.0	26.6	
Monaco	21	37	3	1	41	21	0.0	95.2	
Netherlands	10,134	11,440	400	139	11,979	4,910	0.7	18.2	
Switzerland	8,806	9,402	276	110	9,788	3,958	0.5	11.2	
<b>Central / Eastern Europe</b>	<b>62,023</b>	<b>80,292</b>	<b>922</b>	<b>194</b>	<b>81,408</b>	<b>42,067</b>	<b>4.5</b>	<b>31.3</b>	
Bulgaria	308	410	5	4	419	195	0.0	36.0	
Czech Republic	2,221	2,516	18	23	2,557	1,059	0.1	15.1	
Estonia	459	676	25	11	712	278	0.0	55.1	
Hungary	1,338	1,679	21	11	1,711	752	0.1	27.9	
Lithuania	550	913	9	0	922	451	0.1	67.6	
Poland	4,567	6,248	47	29	6,324	3,119	0.4	38.5	
Romania	548	625	36	2	663	341	0.0	21.0	
Russian Federation	48,803	63,051	675	88	63,814	33,731	3.6	30.8	
Slovakia	823	1,135	48	20	1,203	517	0.1	46.2	
Ukraine	2,406	3,039	38	6	3,083	1,624	0.2	28.1	

## International Tourist Arrivals to Cambodia by Country of Residence in January - May 2013

(by all mean of transportations)

Regions Country of Residence	2012		2013			share		change	
			Purpose of Visit			Total	Female	(%)	(%)
			Holiday	Business	Other			2013*	2013*/12
<b>GRAND TOTAL</b>	<b>1,505,734</b>	<b>1,699,234</b>	<b>78,240</b>	<b>13,713</b>	<b>1,791,187</b>	<b>837,419</b>	<b>100.0</b>	<b>19.0</b>	
<b>Southern Europe</b>	<b>21,379</b>	<b>21,562</b>	<b>732</b>	<b>253</b>	<b>22,547</b>	<b>8,970</b>	<b>1.3</b>	<b>5.5</b>	
Croatia	310	369	9	3	381	182	0.0	22.9	
Greece	446	524	14	2	540	184	0.0	21.1	
Italy	9,478	10,067	300	113	10,480	3,869	0.6	10.6	
Portugal	1,116	1,529	44	12	1,585	762	0.1	42.0	
Serbia	176	276	19	6	301	166	0.0	71.0	
Slovenia	506	543	34	7	584	244	0.0	15.4	
Spain	7,997	6,409	170	85	6,664	2,912	0.4	-16.7	
Turkey	1,350	1,845	142	25	2,012	651	0.1	49.0	
Other Europe	2,384	1,445	108	87	1,640	658	0.1	-31.2	
<b>Americas</b>	<b>113,455</b>	<b>117,406</b>	<b>5,174</b>	<b>2,538</b>	<b>125,118</b>	<b>55,336</b>	<b>7.0</b>	<b>10.3</b>	
Argentina	2,824	3,629	16	15	3,660	1,861	0.2	29.6	
Brazil	2,569	3,367	23	19	3,409	1,662	0.2	32.7	
Canada	24,203	24,490	1,020	233	25,743	11,388	1.4	6.4	
Chile	1,575	2,053	41	8	2,102	1,087	0.1	33.5	
Colombia	499	638	22	10	670	331	0.0	34.3	
Costa Rica	128	143	4	4	151	79	0.0	18.0	
Ecuador	50	88	6	3	97	48	0.0	94.0	
Mexico	1,551	1,715	29	6	1,750	872	0.1	12.8	
Peru	241	252	18	2	272	128	0.0	12.9	
United States	77,948	79,786	3,915	2,165	85,866	37,206	4.8	10.2	
Uruguay	361	473	4	5	482	235	0.0	33.5	
Other Americas	1,506	772	76	68	916	439	0.1	-39.2	
<b>Africa</b>	<b>2,150</b>	<b>2,093</b>	<b>273</b>	<b>117</b>	<b>2,483</b>	<b>1,026</b>	<b>0.1</b>	<b>15.5</b>	
Cameroon	103	44	3	13	60	8	0.0	-41.7	
Congo	34	13	2	3	18	5	0.0	-47.1	
Ghana	82	87	7	6	100	33	0.0	22.0	
Kenya	93	89	9	22	120	63	0.0	29.0	
Liberia	54	22	0	1	23	5	0.0	-57.4	
Nigeria	252	112	130	12	254	17	0.0	0.8	
Sudan	22	15	1	2	18	2	0.0	-18.2	
South Africa	1,307	1,517	97	28	1,642	779	0.1	25.6	
Uganda	30	17	1	8	26	10	0.0	-13.3	
Other Africa	173	177	23	22	222	104	0.0	28.3	
<b>Middle East</b>	<b>5,157</b>	<b>5,065</b>	<b>189</b>	<b>68</b>	<b>5,322</b>	<b>1,931</b>	<b>0.3</b>	<b>3.2</b>	
Egypt	77	89	30	8	127	24	0.0	64.9	
Iran	280	294	14	2	310	94	0.0	10.7	
Iraq	37	67	0	0	67	17	0.0	81.1	
Israel	4,122	3,725	129	25	3,879	1,649	0.2	-5.9	
Kuwait	214	445	0	12	457	15	0.0	113.6	
Oman	48	72	0	0	72	8	0.0	50.0	
Palestine	12	47	2	0	49	6	0.0	308.3	
Qatar	44	53	0	2	55	28	0.0	25.0	
Saudi Arabia	38	71	2	2	75	14	0.0	97.4	
United Arab Emirates	101	48	0	0	48	5	0.0	-52.5	
Yemen	40	47	4	3	54	7	0.0	35.0	
Other Middle East	144	107	8	14	129	64	0.0	-10.4	

### Remark:

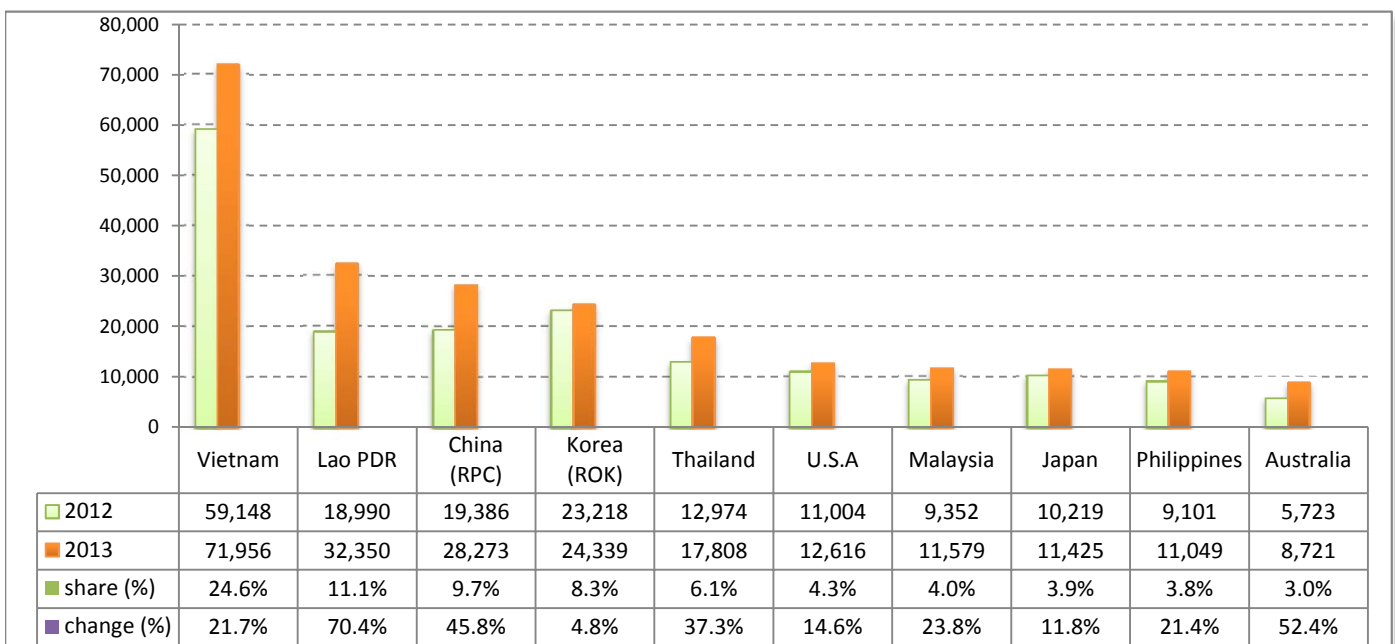
- Cambodian outbound tourist departures: 367,257  
 - International outbound tourist departures: 1,807,377

I. International tourist arrivals to Cambodia in May 2013 was: **292,115**

II. Mode of arrivals

	arrivals	share (%)
<b>Air</b>	<b>126,255</b>	<b>43.2</b>
Phnom Penh Int'l Airport	60,880	20.8
Siem Reap Int'l Airport	65,375	22.4
<b>Land and Water ways</b>	<b>165,860</b>	<b>56.8</b>
Land	161,411	55.3
Waterway	4,449	1.5
<b>Total</b>	<b>292,115</b>	<b>100.0</b>

III. Top ten markets arrivals in May 2013



IV. International tourist arrivals to Cambodia in May 2013

	Inbound tourism		share (%)		change (%)
	2012	2013	2012	2013	2013*/12
<b>Air</b>	<b>104,398</b>	<b>126,255</b>	<b>44.8</b>	<b>43.2</b>	<b>20.9</b>
Phnom Penh Int'l Airport	47,636	60,880	20.4	20.8	27.8
Siem Reap Int'l Airport	56,762	65,375	24.3	22.4	15.2
<b>Land and Water ways</b>	<b>128,822</b>	<b>165,860</b>	<b>55.2</b>	<b>56.8</b>	<b>28.8</b>
Land	126,637	161,411	54.3	55.3	27.5
Waterway	2,185	4,449	0.9	1.5	103.6
<b>Total</b>	<b>233,220</b>	<b>292,115</b>	<b>100.0</b>	<b>100.0</b>	<b>25.3</b>

V. Remark: Percentage share of international tourist arrivals at destinations in May 2013

	Arrivals		share (%)		change (%)
	2012	2013	2012	2013	2013*/12
Phnom Penh & Other Destinations	111,421	157,049	47.8	53.8	41.0
Siem Reap Province	121,799	135,066	52.2	46.2	10.9
<b>Total</b>	<b>233,220</b>	<b>292,115</b>	<b>100.0</b>	<b>100.0</b>	<b>25.3</b>

VI. Outbound tourism in May 2013

	Outbound tourism		change (%)
	2012	2013	2013*/12
Cambodian outbound tourists	63,872	83,715	31.1
International outbound tourists	245,791	301,372	22.6

## International Tourist Arrivals to Cambodia by Country of Residence in May 2013

(by all mean of transportations)

Regions Country of Residence	2012	2013			Total	Female	share	change
		Purpose of Visit					(%)	(%)
		Holiday	Business	Other			2013*	2013*/12
<b>GRAND TOTAL</b>	<b>233,220</b>	<b>273,931</b>	<b>15,337</b>	<b>2,847</b>	<b>292,115</b>	<b>134,361</b>	<b>100.0</b>	<b>25.3</b>
<b>Asia and the Pacific</b>	<b>186,897</b>	<b>223,271</b>	<b>12,395</b>	<b>1,701</b>	<b>237,367</b>	<b>111,150</b>	<b>81.3</b>	<b>27.0</b>
<b>ASEAN (South-East Asia)</b>	<b>116,707</b>	<b>148,174</b>	<b>3,445</b>	<b>928</b>	<b>152,547</b>	<b>74,379</b>	<b>52.2</b>	<b>30.7</b>
Brunei Darussalam	44	36	1	3	40	15	0.0	-9.1
Indonesia	1,862	2,033	292	35	2,360	681	0.8	26.7
Lao PDR	18,990	32,308	11	31	32,350	21,196	11.1	70.4
Malaysia	9,352	10,794	779	6	11,579	4,256	4.0	23.8
Myanmar	277	273	50	67	390	162	0.1	40.8
Philippines	9,101	10,340	655	54	11,049	6,591	3.8	21.4
Singapore	4,959	4,831	174	10	5,015	1,747	1.7	1.1
Thailand	12,974	16,671	817	320	17,808	7,406	6.1	37.3
Vietnam	59,148	70,888	666	402	71,956	32,325	24.6	21.7
<b>North-East Asia</b>	<b>60,461</b>	<b>63,463</b>	<b>8,012</b>	<b>476</b>	<b>71,951</b>	<b>31,688</b>	<b>24.6</b>	<b>19.0</b>
China (RPC)	19,386	23,479	4,611	183	28,273	12,771	9.7	45.8
Hong Kong SAR	823	426	10	4	440	206	0.2	-46.5
Japan	10,219	10,303	968	154	11,425	4,332	3.9	11.8
Korea (ROK)	23,218	22,821	1,392	126	24,339	11,252	8.3	4.8
Mongolia	23	30	0	5	35	20	0.0	52.2
Taiwan, China	6,792	6,404	1,031	4	7,439	3,107	2.5	9.5
<b>Southern Asia</b>	<b>2,275</b>	<b>2,028</b>	<b>344</b>	<b>71</b>	<b>2,443</b>	<b>609</b>	<b>0.8</b>	<b>7.4</b>
Afghanistan	5	41	0	0	41	4	0.0	720.0
Bangladesh	79	157	21	16	194	17	0.1	145.6
Bhutan	26	1	0	0	1	0	0.0	-96.2
India	1,614	1,553	239	41	1,833	534	0.6	13.6
Nepal	273	96	20	4	120	29	0.0	-56.0
Pakistan	178	70	31	3	104	12	0.0	-41.6
Srilanka	100	110	33	7	150	13	0.1	50.0
<b>Western Asia</b>	<b>136</b>	<b>93</b>	<b>24</b>	<b>1</b>	<b>118</b>	<b>64</b>	<b>0.0</b>	<b>-13.2</b>
Kazakhstan	83	57	21	1	79	42	0.0	-4.8
Uzbekistan	53	36	3	0	39	22	0.0	-26.4
<b>Oceania</b>	<b>6,913</b>	<b>9,392</b>	<b>554</b>	<b>167</b>	<b>10,113</b>	<b>4,356</b>	<b>3.5</b>	<b>46.3</b>
Australia	5,723	8,129	453	139	8,721	3,781	3.0	52.4
Fiji	4	6	2	1	9	2	0.0	125.0
New Zealand	1,186	1,257	99	27	1,383	573	0.5	16.6
Other Asia & the Pacific	405	121	16	58	195	54	0.1	-51.9
<b>Europe</b>	<b>29,061</b>	<b>33,086</b>	<b>1,793</b>	<b>624</b>	<b>35,503</b>	<b>14,935</b>	<b>12.2</b>	<b>22.2</b>
<b>Northern Europe</b>	<b>8,551</b>	<b>9,573</b>	<b>557</b>	<b>161</b>	<b>10,291</b>	<b>3,963</b>	<b>3.5</b>	<b>20.3</b>
Denmark	517	547	21	13	581	264	0.2	12.4
Finland	306	281	21	8	310	104	0.1	1.3
Iceland	11	34	0	0	34	20	0.0	209.1
Ireland	593	562	41	12	615	254	0.2	3.7
Norway	373	311	19	11	341	117	0.1	-8.6
Sweden	577	532	42	24	598	191	0.2	3.6
United Kingdom	6,174	7,306	413	93	7,812	3,013	2.7	26.5
<b>Western Europe</b>	<b>12,304</b>	<b>13,002</b>	<b>935</b>	<b>341</b>	<b>14,278</b>	<b>5,542</b>	<b>4.9</b>	<b>16.0</b>
Austria	287	279	19	6	304	99	0.1	5.9
Belgium	638	611	52	16	679	205	0.2	6.4
France	6,273	5,951	552	197	6,700	2,656	2.3	6.8
Germany	3,129	3,690	172	68	3,930	1,586	1.3	25.6
Luxembourg	17	18	1	0	19	7	0.0	11.8
Monaco	3	6	0	0	6	4	0.0	100.0
Netherlands	1,186	1,529	75	29	1,633	634	0.6	37.7
Switzerland	771	918	64	25	1,007	351	0.3	30.6
<b>Central / Eastern Europe</b>	<b>5,518</b>	<b>7,992</b>	<b>141</b>	<b>35</b>	<b>8,168</b>	<b>4,396</b>	<b>2.8</b>	<b>48.0</b>
Bulgaria	42	40	1	2	43	16	0.0	2.4
Czech Republic	144	142	4	3	149	65	0.1	3.5
Estonia	16	28	4	3	35	15	0.0	118.8
Hungary	71	110	4	0	114	47	0.0	60.6
Lithuania	26	55	0	0	55	25	0.0	111.5
Poland	292	510	6	9	525	260	0.2	79.8
Romania	61	51	7	1	59	31	0.0	-3.3
Russian Federation	4,522	6,664	103	16	6,783	3,724	2.3	50.0
Slovakia	62	170	7	1	178	87	0.1	187.1
Ukraine	282	222	5	0	227	126	0.1	-19.5

## International Tourist Arrivals to Cambodia by Country of Residence in May 2013

(by all mean of transportations)

Regions Country of Residence	2012		2013			Total	Female	share	change
	Purpose of Visit			2013*	2013*/12				
	Holiday	Business	Other			(%)	(%)		
<b>GRAND TOTAL</b>	<b>233,220</b>	<b>273,931</b>	<b>15,337</b>	<b>2,847</b>	<b>292,115</b>	<b>134,361</b>	<b>100.0</b>	<b>25.3</b>	
<b>Southern Europe</b>	<b>2,207</b>	<b>2,409</b>	<b>146</b>	<b>44</b>	<b>2,599</b>	<b>986</b>	<b>0.9</b>	<b>17.8</b>	
Croatia	29	33	2	0	35	14	0.0	20.7	
Greece	43	89	4	0	93	39	0.0	116.3	
Italy	786	894	56	17	967	318	0.3	23.0	
Portugal	161	161	8	1	170	61	0.1	5.6	
Serbia	19	32	5	0	37	25	0.0	94.7	
Slovenia	39	36	2	1	39	12	0.0	0.0	
Spain	957	989	34	18	1,041	467	0.4	8.8	
Turkey	173	175	35	7	217	50	0.1	25.4	
Other Europe	481	110	14	43	167	48	0.1	-65.3	
<b>Americas</b>	<b>16,188</b>	<b>16,735</b>	<b>1,020</b>	<b>462</b>	<b>18,217</b>	<b>7,919</b>	<b>6.2</b>	<b>12.5</b>	
Argentina	290	399	2	3	404	200	0.1	39.3	
Brazil	366	462	5	4	471	225	0.2	28.7	
Canada	3,183	3,198	220	51	3,469	1,569	1.2	9.0	
Chile	253	291	13	0	304	146	0.1	20.2	
Colombia	77	104	0	2	106	54	0.0	37.7	
Costa Rica	10	27	0	2	29	16	0.0	190.0	
Ecuador	9	4	0	0	4	3	0.0	-55.6	
Mexico	328	338	1	2	341	182	0.1	4.0	
Peru	39	51	0	0	51	22	0.0	30.8	
United States	11,004	11,485	768	363	12,616	5,319	4.3	14.6	
Uruguay	252	279	0	0	279	139	0.1	10.7	
Other Americas	377	97	11	35	143	44	0.0	-62.1	
<b>Africa</b>	<b>374</b>	<b>294</b>	<b>56</b>	<b>33</b>	<b>383</b>	<b>135</b>	<b>0.1</b>	<b>2.4</b>	
Cameroon	20	6	0	1	7	0	0.0	-65.0	
Congo	11	1	0	1	2	0	0.0	-81.8	
Ghana	15	5	1	1	7	0	0.0	-53.3	
Kenya	11	15	2	13	30	13	0.0	172.7	
Liberia	11	1	0	0	1	0	0.0	-90.9	
Nigeria	47	28	30	1	59	3	0.0	25.5	
Sudan	2	2	1	0	3	1	0.0	50.0	
South Africa	225	196	15	5	216	94	0.1	-4.0	
Uganda	8	2	0	1	3	1	0.0	-62.5	
Other Africa	24	38	7	10	55	23	0.0	129.2	
<b>Middle East</b>	<b>700</b>	<b>545</b>	<b>73</b>	<b>27</b>	<b>645</b>	<b>222</b>	<b>0.2</b>	<b>-7.9</b>	
Egypt	13	27	12	5	44	13	0.0	238.5	
Iran	52	54	3	1	58	13	0.0	11.5	
Iraq	6	21	0	0	21	6	0.0	250.0	
Israel	534	252	52	14	318	165	0.1	-40.4	
Kuwait	23	92	0	0	92	0	0.0	300.0	
Oman	10	16	0	0	16	4	0.0	60.0	
Palestine	2	20	1	0	21	0	0.0	950.0	
Qatar	5	3	0	1	4	1	0.0	-20.0	
Saudi Arabia	7	18	0	0	18	3	0.0	157.1	
United Arab Emirates	27	9	0	0	9	1	0.0	-66.7	
Yemen	6	12	3	1	16	2	0.0	166.7	
Other Middle East	15	21	2	5	28	14	0.0	86.7	

### Remark:

- Cambodian outbound tourist departures: 83,715
- International outbound tourist departures: 301,372



**COMPILED BY:**

1. Mr. Kong Sopheareak

Director  
Statistics & Tourism Information Department  
Fax: +855 23 885003  
E-mail: kong@mot.gov.kh

2. Mr. Horth Vanny

Chief of Tourism Statistics Office  
Compile and data analysis  
Tel.: +855 12 827664