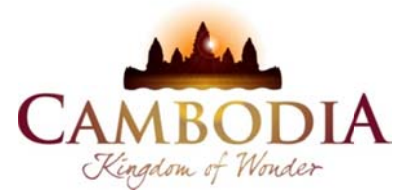




KINGDOM OF CAMBODIA
NATION RELIGION KING



TOURISM STATISTICS REPORT

June 2013

MINISTRY OF TOURISM

Statistics and Tourism Information Department

No. A3, Street 169, Sangkat Veal Vong, Khan 7 Makara, Phnom Penh, Cambodia.

Fax: +855 23 885003

E-mail: kong@mot.gov.kh

Web site: www.mot.gov.kh

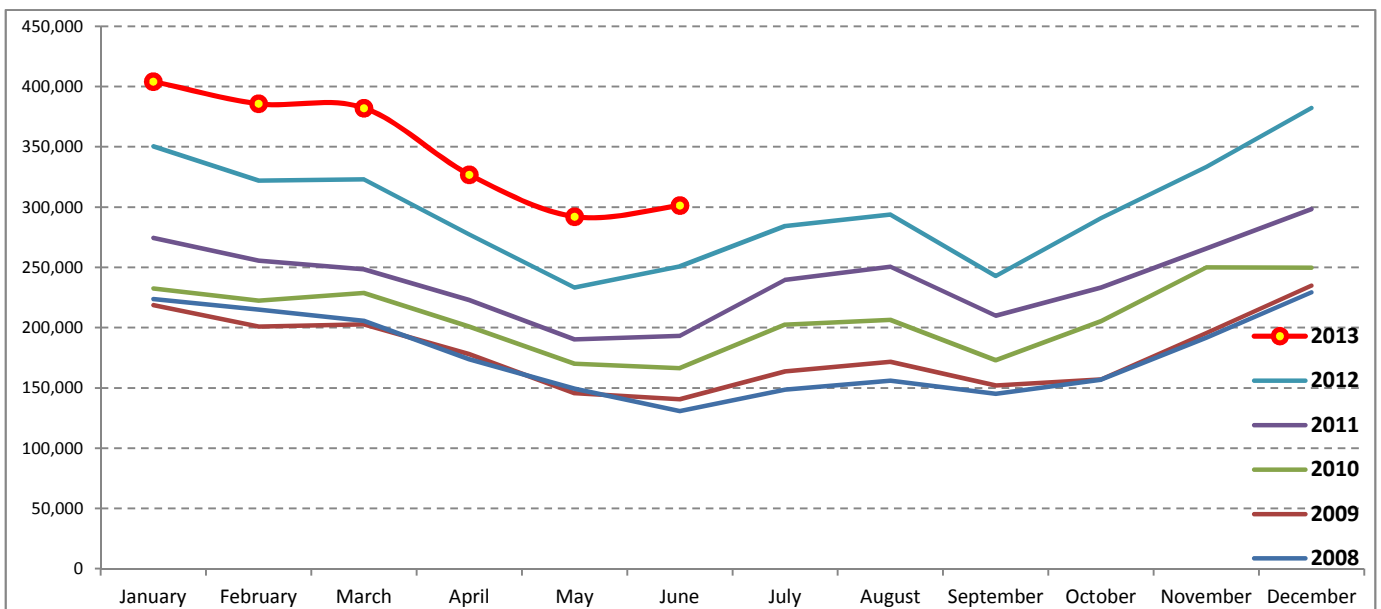
Tourism Highlights

International Tourist Arrivals, Average Length of Stay, Hotels Occupancy & Tourism Receipts 1993 - 2012

Years	Tourist Arrivals		Average Length	Hotels Occupancy	Tourism Receipts
	number	change (%)	of Stay (days)	(%)	(Million US\$)
1993	118,183	-	N/A	N/A	N/A
1994	176,617	49.4	N/A	N/A	N/A
1995	219,680	24.4	8.00	37.00	100
1996	260,489	18.6	7.50	40.00	118
1997	218,843	-16.0	6.40	30.00	103
1998	286,524	30.9	5.20	40.00	166
1999	367,743	28.3	5.50	44.00	190
2000	466,365	26.8	5.50	45.00	228
2001	604,919	29.7	5.50	48.00	304
2002	786,524	30.0	5.80	50.00	379
2003	701,014	-10.9	5.50	50.00	347
2004	1,055,202	50.5	6.30	52.00	578
2005	1,421,615	34.7	6.30	52.00	832
2006	1,700,041	19.6	6.50	54.79	1,049
2007	2,015,128	18.5	6.50	54.79	1,400
2008	2,125,465	5.5	6.65	62.68	1,595
2009	2,161,577	1.7	6.45	63.57	1,561
2010	2,508,289	16.0	6.45	65.74	1,786
2011	2,881,862	14.9	6.50	66.15	1,912
2012	3,584,307	24.4	6.30	68.49	2,210

International tourist arrivals to Cambodia

Destination	Months	2008	2009	2010	2011	2012	2013	change (%) 2013*/12
Cambodia	Q1	644,205	622,288	683,692	778,467	995,210	1,172,072	17.8
<i>International tourist arrivals by all means of transportations</i>	January	223,581	218,691	232,590	274,471	350,257	404,106	15.4
	February	214,902	200,789	222,354	255,499	321,870	385,760	19.8
	March	205,722	202,808	228,748	248,497	323,083	382,206	18.3
	Q2	454,031	464,230	537,464	606,562	761,442	920,527	20.9
	April	173,903	177,955	200,965	223,032	277,304	327,000	17.9
	May	149,275	145,564	170,164	190,258	233,220	292,115	25.3
	June	130,853	140,711	166,335	193,272	250,918	301,412	20.1
	Q3	449,693	487,422	582,024	699,760	820,888	0	
	July	148,449	163,817	202,349	239,527	284,282		
	August	156,098	171,668	206,563	250,429	293,859		
	September	145,146	151,937	173,112	209,804	242,747		
	Q4	577,536	587,637	705,109	797,073	1,006,767	0	
	October	156,718	157,105	205,515	233,190	290,959		
	November	191,549	195,570	249,892	265,539	333,482		
	December	229,269	234,962	249,702	298,344	382,326		
	Total	2,125,465	2,161,577	2,508,289	2,881,862	3,584,307	2,092,599	19.1



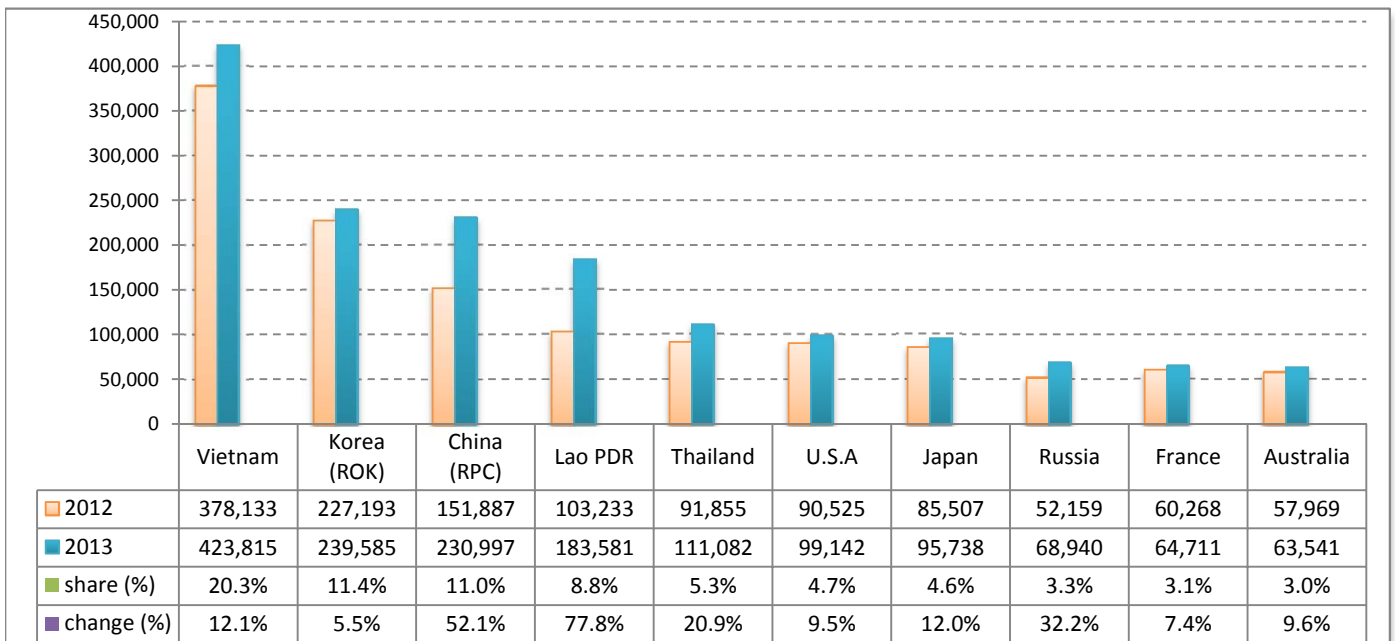
Executive Summary Report in the First Semester 2013

I. International tourist arrivals to Cambodia in January - June 2013 was: **2,092,599**

II. Mode of arrivals

	arrivals	share (%)
Air	1,009,215	48.2
Phnom Penh Int'l Airport	406,670	19.4
Siem Reap Int'l Airport	602,545	28.8
Land and Water ways	1,083,384	51.8
Land	1,045,880	50.0
Waterway	37,504	1.8
Total	2,092,599	100.0

III. Top ten markets arrivals in January - June 2013



IV. International tourist arrivals to Cambodia in January - June 2013

	Inbound tourism		share (%)		change (%)
	2012	2013	2012	2013	2013*/12
Air	850,879	1,009,215	48.4	48.2	18.6
Phnom Penh Int'l Airport	343,286	406,670	19.5	19.4	18.5
Siem Reap Int'l Airport	507,593	602,545	28.9	28.8	18.7
Land and Water ways	905,773	1,083,384	51.6	51.8	19.6
Land	859,900	1,045,880	49.0	50.0	21.6
Waterway	45,873	37,504	2.6	1.8	-18.2
Total	1,756,652	2,092,599	100.0	100.0	19.1

V. Remark: Percentage share of international tourist arrivals at destinations in January - June 2013

	Arrivals		share (%)		change (%)
	2012	2013	2012	2013	2013*/12
Phnom Penh & Other Destinations	697,995	970,354	39.7	46.4	39.0
Siem Reap Province	1,058,657	1,122,245	60.3	53.6	6.0
Total	1,756,652	2,092,599	100.0	100.0	19.1

VI. Outbound tourism in January - June 2013

	Outbound tourism		change (%)
	2012	2013	2013*/12
Cambodian outbound tourists	388,947	441,292	13.5
International outbound tourists	1,755,028	2,102,661	19.8

International Tourist Arrivals to Cambodia by Country of Residence in January - June 2013

(by all mean of transportations)

Regions Country of Residence	2012		2013			share		change	
			Purpose of Visit			Total	Female	(%)	(%)
			Holiday	Business	Other			2013*	2013*/12
GRAND TOTAL	1,756,652	1,983,654	92,531	16,414	2,092,599	977,089	100.0	19.1	
Asia and the Pacific	1,310,192	1,506,359	74,410	9,109	1,589,878	759,405	76.0	21.3	
ASEAN (South-East Asia)	712,380	855,643	19,578	4,561	879,782	431,633	42.0	23.5	
Brunei Darussalam	483	281	7	24	312	129	0.0	-35.4	
Indonesia	9,609	11,335	1,844	126	13,305	4,187	0.6	38.5	
Lao PDR	103,233	183,327	73	181	183,581	118,461	8.8	77.8	
Malaysia	53,722	56,405	4,144	108	60,657	21,383	2.9	12.9	
Myanmar	2,539	2,215	306	132	2,653	1,160	0.1	4.5	
Philippines	48,522	54,215	3,403	382	58,000	34,260	2.8	19.5	
Singapore	24,284	25,119	1,181	77	26,377	9,133	1.3	8.6	
Thailand	91,855	104,510	4,656	1,916	111,082	46,900	5.3	20.9	
Vietnam	378,133	418,236	3,964	1,615	423,815	196,020	20.3	12.1	
North-East Asia	515,271	567,347	49,039	2,957	619,343	290,598	29.6	20.2	
China (RPC)	151,887	200,596	29,285	1,116	230,997	109,678	11.0	52.1	
Hong Kong SAR	4,136	3,487	88	9	3,584	1,780	0.2	-13.3	
Japan	85,507	89,275	5,510	953	95,738	39,947	4.6	12.0	
Korea (ROK)	227,193	230,586	8,153	846	239,585	118,114	11.4	5.5	
Mongolia	205	179	16	15	210	96	0.0	2.4	
Taiwan, China	46,343	43,224	5,987	18	49,229	20,983	2.4	6.2	
Southern Asia	11,715	11,496	1,909	470	13,875	3,638	0.7	18.4	
Afghanistan	70	176	1	9	186	19	0.0	165.7	
Bangladesh	592	718	126	70	914	107	0.0	54.4	
Bhutan	84	32	6	10	48	11	0.0	-42.9	
India	8,890	9,193	1,287	230	10,710	3,053	0.5	20.5	
Nepal	737	534	115	78	727	177	0.0	-1.4	
Pakistan	631	295	188	40	523	85	0.0	-17.1	
Srilanka	711	548	186	33	767	186	0.0	7.9	
Western Asia	1,313	1,634	121	10	1,765	961	0.1	34.4	
Kazakhstan	1,013	1,328	109	9	1,446	758	0.1	42.7	
Uzbekistan	300	306	12	1	319	203	0.0	6.3	
Oceania	66,652	68,366	3,525	955	72,846	31,643	3.5	9.3	
Australia	57,969	59,704	2,992	845	63,541	27,743	3.0	9.6	
Fiji	47	44	5	5	54	17	0.0	14.9	
New Zealand	8,636	8,618	528	105	9,251	3,883	0.4	7.1	
Other Asia & the Pacific	2,861	1,873	238	156	2,267	932	0.1	-20.8	
Europe	308,316	335,585	11,354	4,058	350,997	151,487	16.8	13.8	
Northern Europe	85,388	87,778	3,552	921	92,251	36,137	4.4	8.0	
Denmark	5,328	5,698	159	62	5,919	2,420	0.3	11.1	
Finland	3,689	3,729	135	54	3,918	1,371	0.2	6.2	
Iceland	285	397	26	6	429	187	0.0	50.5	
Ireland	4,149	4,420	192	50	4,662	1,860	0.2	12.4	
Norway	4,807	5,036	133	75	5,244	2,219	0.3	9.1	
Sweden	9,304	9,489	279	137	9,905	3,794	0.5	6.5	
United Kingdom	57,826	59,009	2,628	537	62,174	24,286	3.0	7.5	
Western Europe	130,432	135,825	5,674	2,473	143,972	59,266	6.9	10.4	
Austria	4,469	4,719	122	59	4,900	1,925	0.2	9.6	
Belgium	6,890	6,756	353	122	7,231	2,737	0.3	4.9	
France	60,268	59,796	3,406	1,509	64,711	27,341	3.1	7.4	
Germany	37,670	41,438	991	473	42,902	17,438	2.1	13.9	
Luxembourg	217	258	7	3	268	111	0.0	23.5	
Monaco	24	43	3	1	47	23	0.0	95.8	
Netherlands	11,315	12,812	475	169	13,456	5,484	0.6	18.9	
Switzerland	9,579	10,003	317	137	10,457	4,207	0.5	9.2	
Central / Eastern Europe	66,225	86,222	1,085	248	87,555	45,285	4.2	32.2	
Bulgaria	320	466	7	5	478	221	0.0	49.4	
Czech Republic	2,321	2,638	21	26	2,685	1,111	0.1	15.7	
Estonia	481	703	27	20	750	298	0.0	55.9	
Hungary	1,413	1,770	22	11	1,803	783	0.1	27.6	
Lithuania	626	951	9	2	962	468	0.0	53.7	
Poland	4,876	6,564	51	32	6,647	3,271	0.3	36.3	
Romania	591	668	42	2	712	360	0.0	20.5	
Russian Federation	52,159	68,023	801	116	68,940	36,508	3.3	32.2	
Slovakia	878	1,240	54	24	1,318	549	0.1	50.1	
Ukraine	2,560	3,199	51	10	3,260	1,716	0.2	27.3	

International Tourist Arrivals to Cambodia by Country of Residence in January - June 2013

(by all mean of transportations)

Regions Country of Residence	2012		2013			Total	Female	share	change
	Purpose of Visit			2013*	2013*/12				
	Holiday	Business	Other			(%)	(%)		
GRAND TOTAL	1,756,652	1,983,654	92,531	16,414	2,092,599	977,089	100.0	19.1	
Southern Europe	23,631	24,070	893	308	25,271	10,007	1.2	6.9	
Croatia	338	392	12	6	410	195	0.0	21.3	
Greece	477	567	19	3	589	196	0.0	23.5	
Italy	10,191	10,863	374	134	11,371	4,136	0.5	11.6	
Portugal	1,233	1,721	59	15	1,795	858	0.1	45.6	
Serbia	188	292	21	10	323	175	0.0	71.8	
Slovenia	530	607	35	7	649	278	0.0	22.5	
Spain	9,152	7,606	203	97	7,906	3,473	0.4	-13.6	
Turkey	1,522	2,022	170	36	2,228	696	0.1	46.4	
Other Europe	2,640	1,690	150	108	1,948	792	0.1	-26.2	
Americas	129,927	133,535	6,245	2,946	142,726	62,929	6.8	9.9	
Argentina	3,013	3,850	21	21	3,892	1,972	0.2	29.2	
Brazil	2,780	3,663	29	24	3,716	1,800	0.2	33.7	
Canada	26,722	26,935	1,221	280	28,436	12,557	1.4	6.4	
Chile	1,742	2,295	54	11	2,360	1,198	0.1	35.5	
Colombia	729	802	25	13	840	404	0.0	15.2	
Costa Rica	141	160	4	4	168	89	0.0	19.1	
Ecuador	59	109	6	6	121	57	0.0	105.1	
Mexico	1,875	2,018	30	10	2,058	1,019	0.1	9.8	
Peru	279	305	20	6	331	156	0.0	18.6	
United States	90,525	91,945	4,719	2,478	99,142	42,871	4.7	9.5	
Uruguay	377	496	5	6	507	242	0.0	34.5	
Other Americas	1,685	957	111	87	1,155	564	0.1	-31.5	
Africa	2,505	2,486	308	186	2,980	1,186	0.1	19.0	
Cameroon	112	54	3	16	73	11	0.0	-34.8	
Congo	35	21	2	6	29	7	0.0	-17.1	
Ghana	94	91	7	7	105	34	0.0	11.7	
Kenya	119	114	11	25	150	72	0.0	26.1	
Liberia	65	24	0	1	25	6	0.0	-61.5	
Nigeria	282	145	141	31	317	25	0.0	12.4	
Sudan	23	23	2	2	27	3	0.0	17.4	
South Africa	1,535	1,772	110	52	1,934	889	0.1	26.0	
Uganda	33	28	1	9	38	15	0.0	15.2	
Other Africa	207	214	31	37	282	124	0.0	36.2	
Middle East	5,712	5,689	214	115	6,018	2,082	0.3	5.4	
Egypt	90	115	32	11	158	30	0.0	75.6	
Iran	338	331	15	2	348	101	0.0	3.0	
Iraq	51	76	0	6	82	24	0.0	60.8	
Israel	4,374	3,987	146	26	4,159	1,740	0.2	-4.9	
Kuwait	349	603	1	14	618	20	0.0	77.1	
Oman	74	122	0	1	123	9	0.0	66.2	
Palestine	14	51	2	6	59	10	0.0	321.4	
Qatar	47	69	0	8	77	37	0.0	63.8	
Saudi Arabia	45	87	2	5	94	17	0.0	108.9	
United Arab Emirates	116	64	0	0	64	6	0.0	-44.8	
Yemen	46	54	5	13	72	7	0.0	56.5	
Other Middle East	168	130	11	23	164	81	0.0	-2.4	

Remark:

- Cambodian outbound tourist departures: 441,292
- International outbound tourist departures: 2,102,661

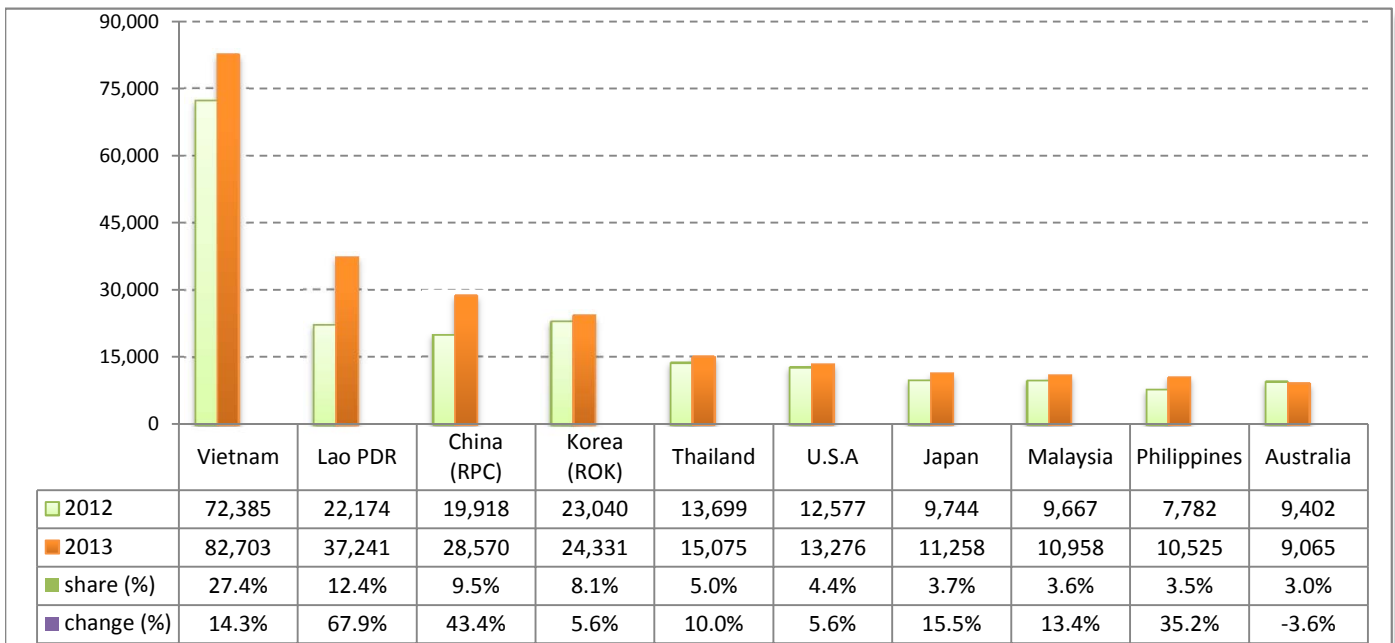
Executive Summary Report in June 2013

I. International tourist arrivals to Cambodia in June 2013 was: **301,412**

II. Mode of arrivals

	arrivals	share (%)
Air	126,452	42.0
Phnom Penh Int'l Airport	64,019	21.2
Siem Reap Int'l Airport	62,433	20.7
Land and Water ways	174,960	58.0
Land	172,939	57.4
Waterway	2,021	0.7
Total	301,412	100.0

III. Top ten markets arrivals in June 2013



IV. International tourist arrivals to Cambodia in June 2013

	Inbound tourism		share (%)		change (%)
	2012	2013	2012	2013	2013*/12
Air	106,443	126,452	42.4	42.0	18.8
Phnom Penh Int'l Airport	54,359	64,019	21.7	21.2	17.8
Siem Reap Int'l Airport	52,084	62,433	20.8	20.7	19.9
Land and Water ways	144,475	174,960	57.6	58.0	21.1
Land	140,518	172,939	56.0	57.4	23.1
Waterway	3,957	2,021	1.6	0.7	-48.9
Total	250,918	301,412	100.0	100.0	20.1

V. Remark: Percentage share of international tourist arrivals at destinations in June 2013

	Arrivals		share (%)		change (%)
	2012	2013	2012	2013	2013*/12
Phnom Penh & Other Destinations	133,712	175,383	53.3	58.2	31.2
Siem Reap Province	117,206	126,029	46.7	41.8	7.5
Total	250,918	301,412	100.0	100.0	20.1

VI. Outbound tourism in June 2013

	Outbound tourism		change (%)
	2012	2013	2013*/12
Cambodian outbound tourists	66,070	74,035	12.1
International outbound tourists	246,741	295,284	19.7

International Tourist Arrivals to Cambodia by Country of Residence in June 2013

(by all mean of transportations)

Regions Country of Residence	2012	2013			Total	Female	share	change
		Purpose of Visit					(%)	(%)
		Holiday	Business	Other			2013*	2013*/12
GRAND TOTAL	250,918	284,420	14,291	2,701	301,412	139,670	100.0	20.1
Asia and the Pacific	207,062	238,336	11,462	1,526	251,324	119,117	83.4	21.4
ASEAN (South-East Asia)	133,032	161,236	3,177	853	165,266	81,878	54.8	24.2
Brunei Darussalam	103	43	1	3	47	21	0.0	-54.4
Indonesia	1,834	2,065	329	17	2,411	755	0.8	31.5
Lao PDR	22,174	37,208	5	28	37,241	24,110	12.4	67.9
Malaysia	9,667	10,168	777	13	10,958	3,905	3.6	13.4
Myanmar	376	450	55	7	512	200	0.2	36.2
Philippines	7,782	9,998	468	59	10,525	6,249	3.5	35.2
Singapore	5,012	5,597	183	14	5,794	2,200	1.9	15.6
Thailand	13,699	13,844	755	476	15,075	5,311	5.0	10.0
Vietnam	72,385	81,863	604	236	82,703	39,127	27.4	14.3
North-East Asia	60,872	64,735	7,231	428	72,394	31,787	24.0	18.9
China (RPC)	19,918	24,257	4,121	192	28,570	13,227	9.5	43.4
Hong Kong SAR	687	398	9	5	412	208	0.1	-40.0
Japan	9,744	10,241	918	99	11,258	4,029	3.7	15.5
Korea (ROK)	23,040	22,998	1,209	124	24,331	10,945	8.1	5.6
Mongolia	35	10	1	4	15	7	0.0	-57.1
Taiwan, China	7,448	6,831	973	4	7,808	3,371	2.6	4.8
Southern Asia	2,020	2,133	366	78	2,577	692	0.9	27.6
Afghanistan	6	37	1	3	41	4	0.0	583.3
Bangladesh	131	77	11	13	101	8	0.0	-22.9
Bhutan	16	5	2	1	8	3	0.0	-50.0
India	1,506	1,775	260	34	2,069	597	0.7	37.4
Nepal	90	106	32	20	158	37	0.1	75.6
Pakistan	89	49	35	5	89	18	0.0	0.0
Srilanka	182	84	25	2	111	25	0.0	-39.0
Western Asia	135	105	20	5	130	63	0.0	-3.7
Kazakhstan	95	65	17	5	87	40	0.0	-8.4
Uzbekistan	40	40	3	0	43	23	0.0	7.5
Oceania	10,720	9,853	611	124	10,588	4,539	3.5	-1.2
Australia	9,402	8,431	523	111	9,065	3,937	3.0	-3.6
Fiji	7	13	0	1	14	5	0.0	100.0
New Zealand	1,311	1,409	88	12	1,509	597	0.5	15.1
Other Asia & the Pacific	283	274	57	38	369	158	0.1	30.4
Europe	26,474	28,938	1,698	651	31,287	12,649	10.4	18.2
Northern Europe	8,900	9,687	497	146	10,330	3,916	3.4	16.1
Denmark	437	408	15	9	432	159	0.1	-1.1
Finland	408	194	11	14	219	66	0.1	-46.3
Iceland	82	133	11	1	145	66	0.0	76.8
Ireland	638	728	19	5	752	326	0.2	17.9
Norway	433	476	22	13	511	180	0.2	18.0
Sweden	483	532	36	15	583	211	0.2	20.7
United Kingdom	6,419	7,216	383	89	7,688	2,908	2.6	19.8
Western Europe	10,864	10,568	835	375	11,778	4,344	3.9	8.4
Austria	234	209	21	6	236	85	0.1	0.9
Belgium	641	631	53	26	710	258	0.2	10.8
France	5,696	5,253	518	204	5,975	2,205	2.0	4.9
Germany	2,318	2,485	123	81	2,689	966	0.9	16.0
Luxembourg	18	11	4	1	16	5	0.0	-11.1
Monaco	3	6	0	0	6	2	0.0	100.0
Netherlands	1,181	1,372	75	30	1,477	574	0.5	25.1
Switzerland	773	601	41	27	669	249	0.2	-13.5
Central / Eastern Europe	4,202	5,930	163	54	6,147	3,218	2.0	46.3
Bulgaria	12	56	2	1	59	26	0.0	391.7
Czech Republic	100	122	3	3	128	52	0.0	28.0
Estonia	22	27	2	9	38	20	0.0	72.7
Hungary	75	91	1	0	92	31	0.0	22.7
Lithuania	76	38	0	2	40	17	0.0	-47.4
Poland	309	316	4	3	323	152	0.1	4.5
Romania	43	43	6	0	49	19	0.0	14.0
Russian Federation	3,356	4,972	126	28	5,126	2,777	1.7	52.7
Slovakia	55	105	6	4	115	32	0.0	109.1
Ukraine	154	160	13	4	177	92	0.1	14.9

International Tourist Arrivals to Cambodia by Country of Residence in June 2013

(by all mean of transportations)

Regions Country of Residence	2012	2013			Total	Female	share	change
		Purpose of Visit					(%)	(%)
		Holiday	Business	Other			2013*	2013*/12
GRAND TOTAL	250,918	284,420	14,291	2,701	301,412	139,670	100.0	20.1
Southern Europe	2,252	2,508	161	55	2,724	1,037	0.9	21.0
Croatia	28	23	3	3	29	13	0.0	3.6
Greece	31	43	5	1	49	12	0.0	58.1
Italy	713	796	74	21	891	267	0.3	25.0
Portugal	117	192	15	3	210	96	0.1	79.5
Serbia	12	16	2	4	22	9	0.0	83.3
Slovenia	24	64	1	0	65	34	0.0	170.8
Spain	1,155	1,197	33	12	1,242	561	0.4	7.5
Turkey	172	177	28	11	216	45	0.1	25.6
Other Europe	256	245	42	21	308	134	0.1	20.3
Americas	16,472	16,129	1,071	408	17,608	7,593	5.8	6.9
Argentina	189	221	5	6	232	111	0.1	22.8
Brazil	211	296	6	5	307	138	0.1	45.5
Canada	2,519	2,445	201	47	2,693	1,169	0.9	6.9
Chile	167	242	13	3	258	111	0.1	54.5
Colombia	230	164	3	3	170	73	0.1	-26.1
Costa Rica	13	17	0	0	17	10	0.0	30.8
Ecuador	9	21	0	3	24	9	0.0	166.7
Mexico	324	303	1	4	308	147	0.1	-4.9
Peru	38	53	2	4	59	28	0.0	55.3
United States	12,577	12,159	804	313	13,276	5,665	4.4	5.6
Uruguay	16	23	1	1	25	7	0.0	56.3
Other Americas	179	185	35	19	239	125	0.1	33.5
Africa	355	393	35	69	497	160	0.2	40.0
Cameroon	9	10	0	3	13	3	0.0	44.4
Congo	1	8	0	3	11	2	0.0	1000.0
Ghana	12	4	0	1	5	1	0.0	-58.3
Kenya	26	25	2	3	30	9	0.0	15.4
Liberia	11	2	0	0	2	1	0.0	-81.8
Nigeria	30	33	11	19	63	8	0.0	110.0
Sudan	1	8	1	0	9	1	0.0	800.0
South Africa	228	255	13	24	292	110	0.1	28.1
Uganda	3	11	0	1	12	5	0.0	300.0
Other Africa	34	37	8	15	60	20	0.0	76.5
Middle East	555	624	25	47	696	151	0.2	25.4
Egypt	13	26	2	3	31	6	0.0	138.5
Iran	58	37	1	0	38	7	0.0	-34.5
Iraq	14	9	0	6	15	7	0.0	7.1
Israel	252	262	17	1	280	91	0.1	11.1
Kuwait	135	158	1	2	161	5	0.1	19.3
Oman	26	50	0	1	51	1	0.0	96.2
Palestine	2	4	0	6	10	4	0.0	400.0
Qatar	3	16	0	6	22	9	0.0	633.3
Saudi Arabia	7	16	0	3	19	3	0.0	171.4
United Arab Emirates	15	16	0	0	16	1	0.0	6.7
Yemen	6	7	1	10	18	0	0.0	200.0
Other Middle East	24	23	3	9	35	17	0.0	45.8

Remark:

- Cambodian outbound tourist departures: 74,035
- International outbound tourist departures: 295,284

COMPILED BY:

1. Mr. Kong Sopheareak

Director
Statistics & Tourism Information Department
Fax: +855 23 885003
E-mail: kong@mot.gov.kh

2. Mr. Horth Vanny

Chief of Tourism Statistics Office
Compile and data analysis
Tel.: +855 12 827664