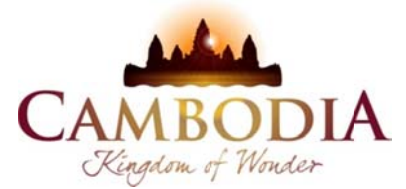




KINGDOM OF CAMBODIA
NATION RELIGION KING



TOURISM STATISTICS REPORT

September 2013

MINISTRY OF TOURISM

Statistics and Tourism Information Department

No. A3, Street 169, Sangkat Veal Vong, Khan 7 Makara, Phnom Penh, Cambodia.

Fax: +855 23 885003

E-mail: kong@mot.gov.kh

Web site: www.mot.gov.kh

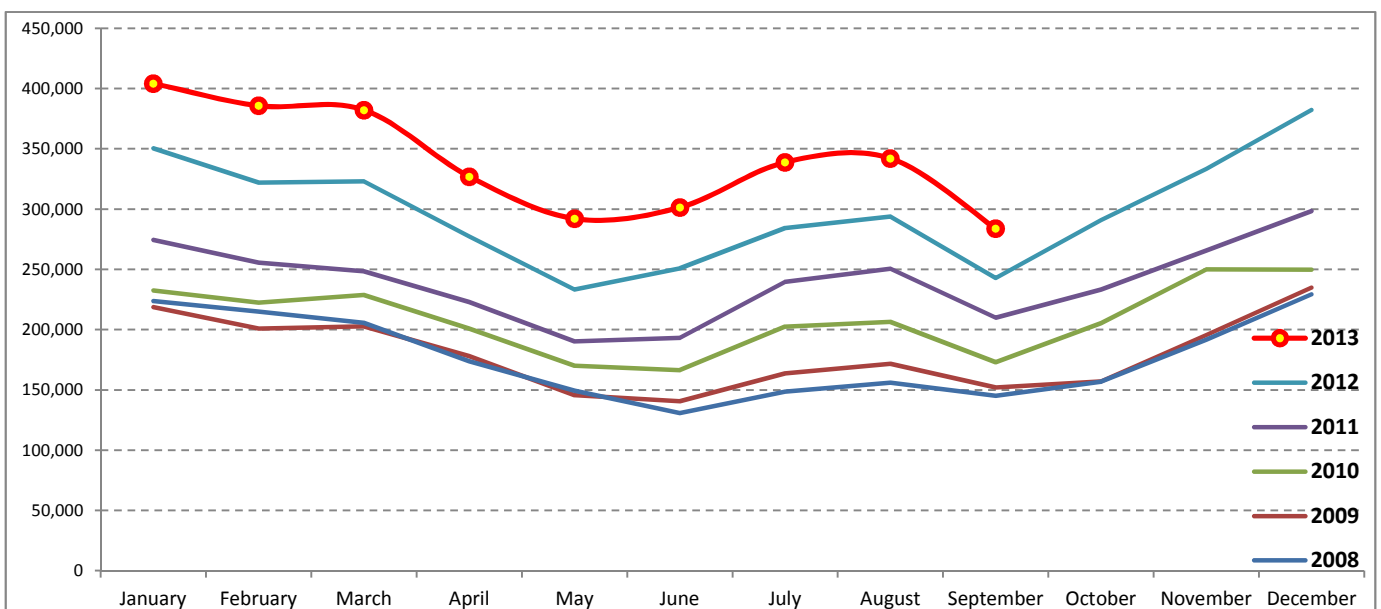
Tourism Highlights

International Tourist Arrivals, Average Length of Stay, Hotels Occupancy & Tourism Receipts 1993 - 2012

Years	Tourist Arrivals		Average Length	Hotels Occupancy	Tourism Receipts
	number	change (%)	of Stay (days)	(%)	(Million US\$)
1993	118,183	-	N/A	N/A	N/A
1994	176,617	49.4	N/A	N/A	N/A
1995	219,680	24.4	8.00	37.00	100
1996	260,489	18.6	7.50	40.00	118
1997	218,843	-16.0	6.40	30.00	103
1998	286,524	30.9	5.20	40.00	166
1999	367,743	28.3	5.50	44.00	190
2000	466,365	26.8	5.50	45.00	228
2001	604,919	29.7	5.50	48.00	304
2002	786,524	30.0	5.80	50.00	379
2003	701,014	-10.9	5.50	50.00	347
2004	1,055,202	50.5	6.30	52.00	578
2005	1,421,615	34.7	6.30	52.00	832
2006	1,700,041	19.6	6.50	54.79	1,049
2007	2,015,128	18.5	6.50	54.79	1,400
2008	2,125,465	5.5	6.65	62.68	1,595
2009	2,161,577	1.7	6.45	63.57	1,561
2010	2,508,289	16.0	6.45	65.74	1,786
2011	2,881,862	14.9	6.50	66.15	1,912
2012	3,584,307	24.4	6.30	68.49	2,210

International tourist arrivals to Cambodia

Destination	Months	2008	2009	2010	2011	2012	2013	change (%) 2013*/12
Cambodia	Q1	644,205	622,288	683,692	778,467	995,210	1,172,072	17.8
<i>International tourist arrivals by all means of transportations</i>	January	223,581	218,691	232,590	274,471	350,257	404,106	15.4
	February	214,902	200,789	222,354	255,499	321,870	385,760	19.8
	March	205,722	202,808	228,748	248,497	323,083	382,206	18.3
	Q2	454,031	464,230	537,464	606,562	761,442	920,527	20.9
	April	173,903	177,955	200,965	223,032	277,304	327,000	17.9
	May	149,275	145,564	170,164	190,258	233,220	292,115	25.3
	June	130,853	140,711	166,335	193,272	250,918	301,412	20.1
	Q3	449,693	487,422	582,024	699,760	820,888	964,612	17.5
	July	148,449	163,817	202,349	239,527	284,282	338,761	19.2
	August	156,098	171,668	206,563	250,429	293,859	342,064	16.4
	September	145,146	151,937	173,112	209,804	242,747	283,787	16.9
	Q4	577,536	587,637	705,109	797,073	1,006,767	0	
	October	156,718	157,105	205,515	233,190	290,959		
	November	191,549	195,570	249,892	265,539	333,482		
	December	229,269	234,962	249,702	298,344	382,326		
	Total	2,125,465	2,161,577	2,508,289	2,881,862	3,584,307	3,057,211	18.6



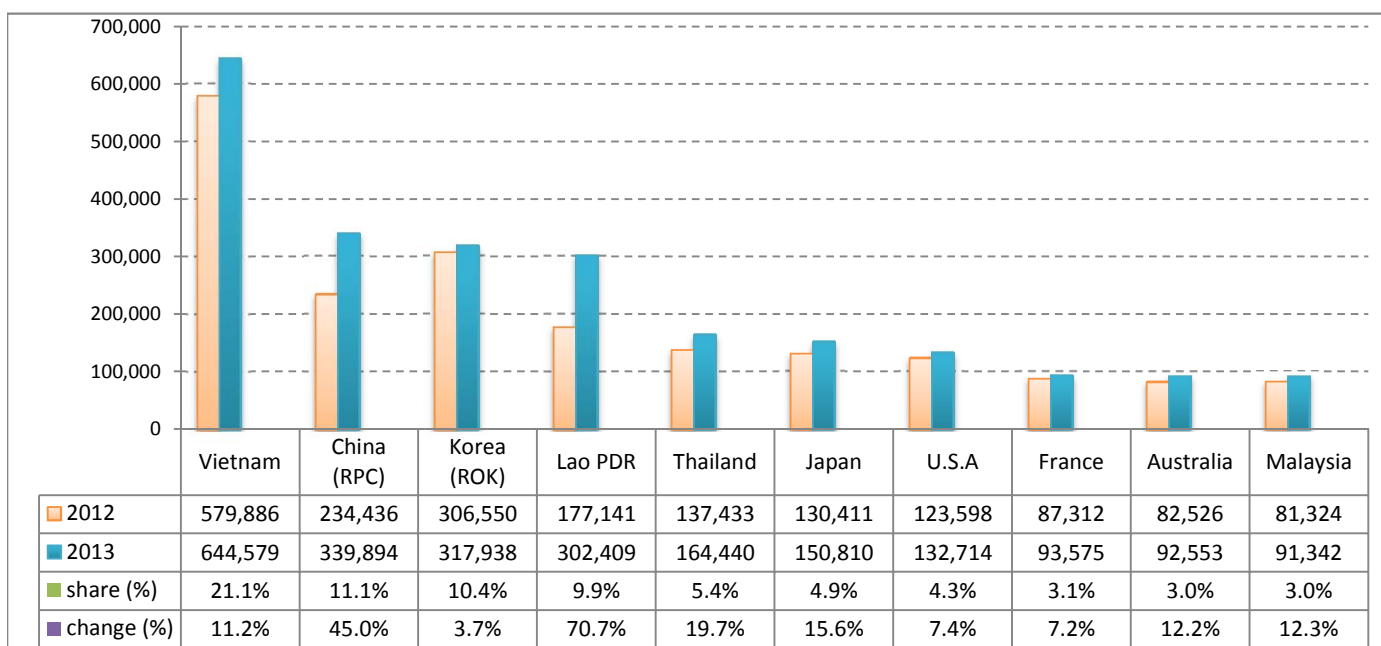
Executive Summary Report in the First Nine Months of 2013

I. International tourist arrivals to Cambodia in January - September 2013 was: **3,057,211**

II. Mode of arrivals

	arrivals	share (%)
Air	1,437,227	47.0
Phnom Penh Int'l Airport	600,631	19.6
Siem Reap Int'l Airport	836,596	27.4
Land and Water ways	1,619,984	53.0
Land	1,568,639	51.3
Waterway	51,345	1.7
Total	3,057,211	100.0

III. Top ten markets arrivals in January - September 2013



IV. International tourist arrivals to Cambodia in January - September 2013

	Inbound tourism		share (%)		change (%)
	2012	2013	2012	2013	2013*/12
Air	1,221,420	1,437,227	47.4	47.0	17.7
Phnom Penh Int'l Airport	510,382	600,631	19.8	19.6	17.7
Siem Reap Int'l Airport	711,038	836,596	27.6	27.4	17.7
Land and Water ways	1,356,120	1,619,984	52.6	53.0	19.5
Land	1,299,804	1,568,639	50.4	51.3	20.7
Waterway	56,316	51,345	2.2	1.7	-8.8
Total	2,577,540	3,057,211	100.0	100.0	18.6

V. Remark: Percentage share of international tourist arrivals at destinations in January - September 2013

	Arrivals		share (%)		change (%)
	2012	2013	2012	2013	2013*/12
Phnom Penh & Other Destinations	1,090,327	1,483,288	42.3	48.5	36.0
Siem Reap Province	1,487,213	1,573,923	57.7	51.5	5.8
Total	2,577,540	3,057,211	100.0	100.0	18.6

VI. Outbound tourism in January - September 2013

	Outbound tourism		change (%)
	2012	2013	2013*/12
Cambodian outbound tourists	585,805	644,393	10.0
International outbound tourists	2,537,141	3,067,604	20.9

International Tourist Arrivals to Cambodia by Country of Residence in January - September 2013

(by all mean of transportations)

Regions Country of Residence	2012		2013			share		change	
			Purpose of Visit			Total	Female	2013*	2013*/12
			Holiday	Business	Other				
GRAND TOTAL	2,577,540	2,894,903	137,457	24,851	3,057,211	1,431,143	100.0	18.6	
Asia and the Pacific	1,965,442	2,246,277	110,353	14,295	2,370,925	1,133,264	77.6	20.6	
ASEAN (South-East Asia)	1,102,158	1,317,052	29,175	7,234	1,353,461	667,606	44.3	22.8	
Brunei Darussalam	681	436	9	42	487	201	0.0	-28.5	
Indonesia	16,092	17,493	2,826	191	20,510	6,368	0.7	27.5	
Lao PDR	177,141	301,992	96	321	302,409	194,282	9.9	70.7	
Malaysia	81,324	85,148	6,021	173	91,342	31,947	3.0	12.3	
Myanmar	3,358	3,155	432	188	3,775	1,604	0.1	12.4	
Philippines	70,944	81,667	4,924	584	87,175	51,550	2.9	22.9	
Singapore	35,299	36,795	1,813	136	38,744	13,324	1.3	9.8	
Thailand	137,433	153,791	7,148	3,501	164,440	69,213	5.4	19.7	
Vietnam	579,886	636,575	5,906	2,098	644,579	299,117	21.1	11.2	
North-East Asia	744,480	807,639	72,504	4,696	884,839	411,261	28.9	18.9	
China (RPC)	234,436	295,448	42,557	1,889	339,894	161,276	11.1	45.0	
Hong Kong SAR	5,411	4,615	131	9	4,755	2,325	0.2	-12.1	
Japan	130,411	140,742	8,614	1,454	150,810	62,782	4.9	15.6	
Korea (ROK)	306,550	304,303	12,423	1,212	317,938	154,603	10.4	3.7	
Mongolia	267	235	18	21	274	127	0.0	2.6	
Taiwan, China	67,405	62,296	8,761	111	71,168	30,148	2.3	5.6	
Southern Asia	17,340	17,395	3,048	717	21,160	5,438	0.7	22.0	
Afghanistan	110	217	2	18	237	22	0.0	115.5	
Bangladesh	898	1,036	159	111	1,306	152	0.0	45.4	
Bhutan	115	46	12	18	76	22	0.0	-33.9	
India	13,239	13,984	2,094	355	16,433	4,560	0.5	24.1	
Nepal	1,046	761	185	107	1,053	247	0.0	0.7	
Pakistan	879	490	308	59	857	145	0.0	-2.5	
Srilanka	1,053	861	288	49	1,198	290	0.0	13.8	
Western Asia	1,728	2,072	191	17	2,280	1,248	0.1	31.9	
Kazakhstan	1,298	1,661	166	14	1,841	970	0.1	41.8	
Uzbekistan	430	411	25	3	439	278	0.0	2.1	
Oceania	95,196	99,843	5,142	1,417	106,402	46,531	3.5	11.8	
Australia	82,526	86,941	4,367	1,245	92,553	40,725	3.0	12.2	
Fiji	75	57	10	8	75	24	0.0	0.0	
New Zealand	12,595	12,845	765	164	13,774	5,782	0.5	9.4	
Other Asia & the Pacific	4,540	2,276	293	214	2,783	1,180	0.1	-38.7	
Europe	425,376	461,927	17,252	5,874	485,053	210,770	15.9	14.0	
Northern Europe	114,798	121,297	5,320	1,368	127,985	50,837	4.2	11.5	
Denmark	7,053	7,483	229	93	7,805	3,209	0.3	10.7	
Finland	4,385	4,511	188	80	4,779	1,752	0.2	9.0	
Iceland	416	634	38	11	683	281	0.0	64.2	
Ireland	6,474	6,949	288	73	7,310	3,123	0.2	12.9	
Norway	6,028	6,539	214	89	6,842	2,802	0.2	13.5	
Sweden	10,834	10,980	382	185	11,547	4,324	0.4	6.6	
United Kingdom	79,608	84,201	3,981	837	89,019	35,346	2.9	11.8	
Western Europe	183,030	188,722	8,728	3,566	201,016	83,688	6.6	9.8	
Austria	5,780	6,156	162	76	6,394	2,548	0.2	10.6	
Belgium	10,509	10,483	527	186	11,196	4,476	0.4	6.5	
France	87,312	86,068	5,329	2,178	93,575	39,807	3.1	7.2	
Germany	49,386	53,110	1,488	667	55,265	22,512	1.8	11.9	
Luxembourg	306	367	11	5	383	164	0.0	25.2	
Monaco	36	81	6	1	88	46	0.0	144.4	
Netherlands	17,184	19,545	718	245	20,508	8,588	0.7	19.3	
Switzerland	12,517	12,912	487	208	13,607	5,547	0.4	8.7	
Central / Eastern Europe	81,707	106,090	1,618	353	108,061	56,207	3.5	32.3	
Bulgaria	420	558	11	15	584	281	0.0	39.0	
Czech Republic	2,783	3,134	42	40	3,216	1,331	0.1	15.6	
Estonia	577	810	36	27	873	346	0.0	51.3	
Hungary	1,701	2,060	29	14	2,103	915	0.1	23.6	
Lithuania	712	1,063	11	2	1,076	524	0.0	51.1	
Poland	6,042	7,834	70	46	7,950	3,911	0.3	31.6	
Romania	869	864	56	5	925	480	0.0	6.4	
Russian Federation	64,173	84,572	1,210	157	85,939	45,769	2.8	33.9	
Slovakia	1,194	1,463	77	28	1,568	656	0.1	31.3	
Ukraine	3,236	3,732	76	19	3,827	1,994	0.1	18.3	

International Tourist Arrivals to Cambodia by Country of Residence in January - September 2013

(by all mean of transportations)

Regions Country of Residence	2012		2013			share		change	
			Purpose of Visit			Total	Female	(%)	(%)
			Holiday	Business	Other			2013*	2013*/12
GRAND TOTAL	2,577,540	2,894,903	137,457	24,851	3,057,211	1,431,143	100.0	18.6	
Southern Europe	41,493	43,816	1,391	438	45,645	19,060	1.5	10.0	
Croatia	487	483	17	9	509	231	0.0	4.5	
Greece	800	810	27	6	843	299	0.0	5.4	
Italy	16,136	17,234	558	189	17,981	6,840	0.6	11.4	
Portugal	2,062	2,684	100	17	2,801	1,332	0.1	35.8	
Serbia	254	394	28	13	435	226	0.0	71.3	
Slovenia	646	757	45	7	809	348	0.0	25.2	
Spain	19,069	18,838	317	148	19,303	8,896	0.6	1.2	
Turkey	2,039	2,616	299	49	2,964	888	0.1	45.4	
Other Europe	4,348	2,002	195	149	2,346	978	0.1	-46.0	
Americas	174,965	175,421	9,111	4,303	188,835	82,718	6.2	7.9	
Argentina	3,527	4,523	31	40	4,594	2,291	0.2	30.3	
Brazil	3,519	4,637	46	40	4,723	2,235	0.2	34.2	
Canada	34,398	34,070	1,685	409	36,164	15,925	1.2	5.1	
Chile	2,273	3,058	67	18	3,143	1,600	0.1	38.3	
Colombia	1,102	1,200	35	24	1,259	604	0.0	14.2	
Costa Rica	198	206	7	6	219	116	0.0	10.6	
Ecuador	142	159	11	7	177	85	0.0	24.6	
Mexico	2,809	3,245	37	26	3,308	1,610	0.1	17.8	
Peru	398	454	24	10	488	232	0.0	22.6	
United States	123,598	122,097	7,017	3,600	132,714	57,047	4.3	7.4	
Uruguay	435	539	6	8	553	261	0.0	27.1	
Other Americas	2,566	1,233	145	115	1,493	712	0.0	-41.8	
Africa	3,812	3,456	423	236	4,115	1,617	0.1	7.9	
Cameroon	158	83	4	20	107	13	0.0	-32.3	
Congo	47	31	3	7	41	11	0.0	-12.8	
Ghana	120	102	7	11	120	39	0.0	0.0	
Kenya	182	154	16	38	208	102	0.0	14.3	
Liberia	76	38	0	1	39	7	0.0	-48.7	
Nigeria	434	234	201	36	471	49	0.0	8.5	
Sudan	36	30	2	4	36	3	0.0	0.0	
South Africa	2,279	2,488	150	63	2,701	1,218	0.1	18.5	
Uganda	58	31	2	11	44	17	0.0	-24.1	
Other Africa	422	265	38	45	348	158	0.0	-17.5	
Middle East	7,945	7,822	318	143	8,283	2,774	0.3	4.3	
Egypt	147	167	49	13	229	46	0.0	55.8	
Iran	486	482	22	4	508	135	0.0	4.5	
Iraq	71	103	2	6	111	33	0.0	56.3	
Israel	5,851	5,436	215	39	5,690	2,304	0.2	-2.8	
Kuwait	520	832	1	14	847	31	0.0	62.9	
Oman	109	164	0	2	166	15	0.0	52.3	
Palestine	34	75	2	6	83	13	0.0	144.1	
Qatar	58	79	0	9	88	38	0.0	51.7	
Saudi Arabia	62	107	2	6	115	18	0.0	85.5	
United Arab Emirates	182	122	0	1	123	15	0.0	-32.4	
Yemen	128	84	7	13	104	16	0.0	-18.8	
Other Middle East	297	171	18	30	219	110	0.0	-26.3	

Remark:

- Cambodian outbound tourist departures: 644,393
 - International outbound tourist departures: 3,067,604

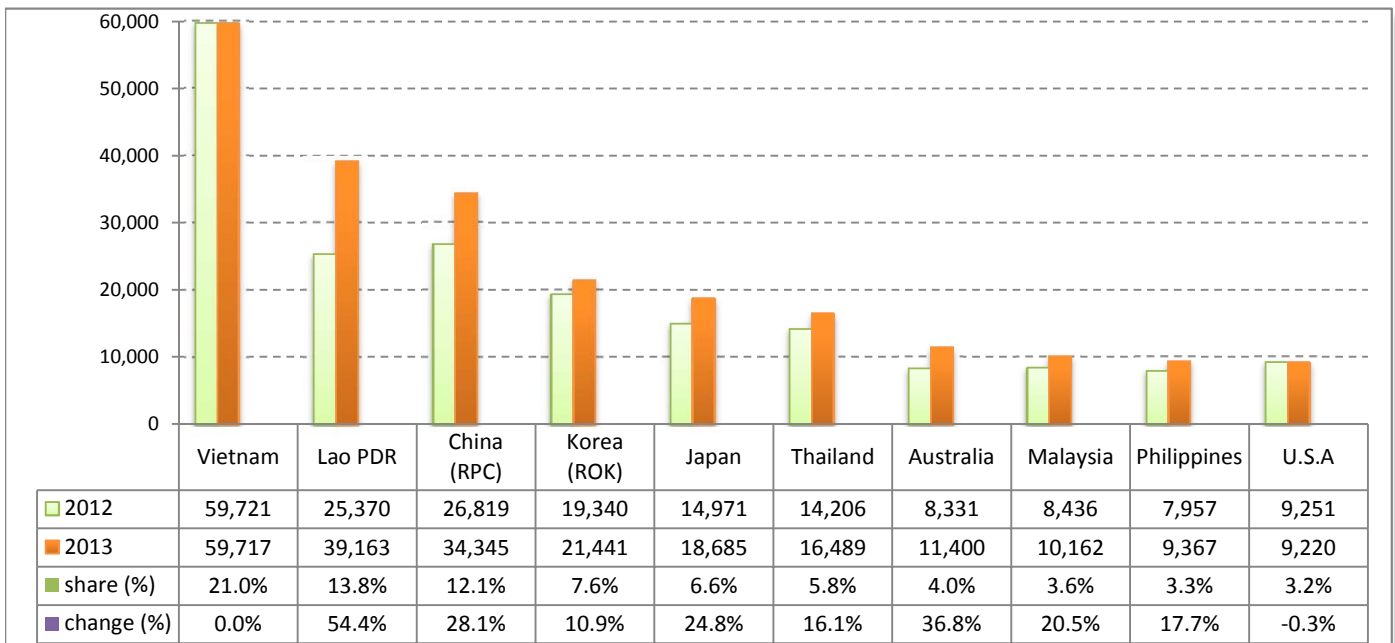
Executive Summary Report in September 2013

I. International tourist arrivals to Cambodia in September 2013 was: **283,787**

II. Mode of arrivals

	arrivals	share (%)
Air	129,458	45.6
Phnom Penh Int'l Airport	59,018	20.8
Siem Reap Int'l Airport	70,440	24.8
Land and Water ways	154,329	54.4
Land	149,209	52.6
Waterway	5,120	1.8
Total	283,787	100.0

III. Top ten markets arrivals in September 2013



IV. International tourist arrivals to Cambodia in September 2013

	Inbound tourism		share (%)		change (%)
	2012	2013	2012	2013	2013*/12
Air	108,176	129,458	44.6	45.6	19.7
Phnom Penh Int'l Airport	50,023	59,018	20.6	20.8	18.0
Siem Reap Int'l Airport	58,153	70,440	24.0	24.8	21.1
Land and Water ways	134,571	154,329	55.4	54.4	14.7
Land	131,798	149,209	54.3	52.6	13.2
Waterway	2,773	5,120	1.1	1.8	84.6
Total	242,747	283,787	100.0	100.0	16.9

V. Remark: Percentage share of international tourist arrivals at destinations in September 2013

	Arrivals		share (%)		change (%)
	2012	2013	2012	2013	2013*/12
Phnom Penh & Other Destinations	121,157	142,802	49.9	50.3	17.9
Siem Reap Province	121,590	140,985	50.1	49.7	16.0
Total	242,747	283,787	100.0	100.0	16.9

VI. Outbound tourism in September 2013

	Outbound tourism		change (%)
	2012	2013	2013*/12
Cambodian outbound tourists	66,002	69,420	5.2
International outbound tourists	237,456	346,436	45.9

International Tourist Arrivals to Cambodia by Country of Residence in September 2013

(by all mean of transportations)

Regions Country of Residence	2012	2013			Total	Female	share	change
		Purpose of Visit					(%)	(%)
		Holiday	Business	Other			2013*	2013*/12
GRAND TOTAL	242,747	266,565	14,365	2,857	283,787	133,444	100.0	16.9
Asia and the Pacific	201,211	225,978	11,485	1,941	239,404	114,885	84.4	19.0
ASEAN (South-East Asia)	121,472	137,556	3,110	1,089	141,755	71,184	50.0	16.7
Brunei Darussalam	57	32	2	2	36	17	0.0	-36.8
Indonesia	1,784	1,720	317	11	2,048	540	0.7	14.8
Lao PDR	25,370	39,086	11	66	39,163	25,022	13.8	54.4
Malaysia	8,436	9,558	589	15	10,162	3,461	3.6	20.5
Myanmar	220	275	41	27	343	118	0.1	55.9
Philippines	7,957	8,814	509	44	9,367	5,527	3.3	17.7
Singapore	3,721	4,141	263	26	4,430	1,568	1.6	19.1
Thailand	14,206	15,029	758	702	16,489	6,929	5.8	16.1
Vietnam	59,721	58,901	620	196	59,717	28,002	21.0	0.0
North-East Asia	67,672	73,996	7,441	606	82,043	36,939	28.9	21.2
China (RPC)	26,819	29,799	4,232	314	34,345	16,426	12.1	28.1
Hong Kong SAR	344	434	15	0	449	225	0.2	30.5
Japan	14,971	17,444	1,058	183	18,685	7,641	6.6	24.8
Korea (ROK)	19,340	20,070	1,269	102	21,441	9,724	7.6	10.9
Mongolia	22	19	0	0	19	9	0.0	-13.6
Taiwan, China	6,176	6,230	867	7	7,104	2,914	2.5	15.0
Southern Asia	1,800	1,952	360	64	2,376	514	0.8	32.0
Afghanistan	14	8	1	0	9	0	0.0	-35.7
Bangladesh	100	105	10	16	131	4	0.0	31.0
Bhutan	4	7	4	0	11	3	0.0	175.0
India	1,426	1,530	255	34	1,819	447	0.6	27.6
Nepal	78	97	15	3	115	18	0.0	47.4
Pakistan	74	98	46	4	148	21	0.1	100.0
Sri Lanka	104	107	29	7	143	21	0.1	37.5
Western Asia	138	107	13	4	124	60	0.0	-10.1
Kazakhstan	95	76	12	4	92	42	0.0	-3.2
Uzbekistan	43	31	1	0	32	18	0.0	-25.6
Oceania	9,608	12,219	538	165	12,922	6,101	4.6	34.5
Australia	8,331	10,789	465	146	11,400	5,456	4.0	36.8
Fiji	8	2	3	1	6	2	0.0	-25.0
New Zealand	1,269	1,428	70	18	1,516	643	0.5	19.5
Other Asia & the Pacific	521	148	23	13	184	87	0.1	-64.7
Europe	27,530	28,003	1,975	515	30,493	12,875	10.7	10.8
Northern Europe	7,589	7,683	605	142	8,430	3,195	3.0	11.1
Denmark	356	331	30	10	371	118	0.1	4.2
Finland	274	393	22	6	421	232	0.1	53.6
Iceland	18	49	3	1	53	14	0.0	194.4
Ireland	478	507	32	5	544	226	0.2	13.8
Norway	312	334	38	9	381	143	0.1	22.1
Sweden	495	361	45	14	420	123	0.1	-15.2
United Kingdom	5,656	5,708	435	97	6,240	2,339	2.2	10.3
Western Europe	10,897	10,277	954	288	11,519	4,509	4.1	5.7
Austria	321	335	10	3	348	139	0.1	8.4
Belgium	628	633	52	16	701	262	0.2	11.6
France	4,517	3,979	584	173	4,736	1,793	1.7	4.8
Germany	3,663	3,603	160	55	3,818	1,561	1.3	4.2
Luxembourg	7	14	0	1	15	8	0.0	114.3
Monaco	1	13	0	0	13	10	0.0	1200.0
Netherlands	1,041	1,078	86	22	1,186	463	0.4	13.9
Switzerland	719	622	62	18	702	273	0.2	-2.4
Central / Eastern Europe	5,289	6,323	224	35	6,582	3,473	2.3	24.4
Bulgaria	32	31	2	3	36	25	0.0	12.5
Czech Republic	131	114	12	11	137	59	0.0	4.6
Estonia	27	42	6	1	49	14	0.0	81.5
Hungary	82	82	3	0	85	36	0.0	3.7
Lithuania	26	39	0	0	39	18	0.0	50.0
Poland	382	373	13	3	389	193	0.1	1.8
Romania	106	69	5	1	75	44	0.0	-29.2
Russian Federation	4,136	5,351	159	11	5,521	2,968	1.9	33.5
Slovakia	144	42	10	1	53	14	0.0	-63.2
Ukraine	223	180	14	4	198	102	0.1	-11.2

International Tourist Arrivals to Cambodia by Country of Residence in September 2013

(by all mean of transportations)

Regions Country of Residence	2012	2013			Total	Female	share	change
		Purpose of Visit					2013*	2013*/12
		Holiday	Business	Other				
GRAND TOTAL	242,747	266,565	14,365	2,857	283,787	133,444	100.0	16.9
Southern Europe	3,237	3,602	173	40	3,815	1,637	1.3	17.9
Croatia	18	21	1	2	24	7	0.0	33.3
Greece	75	21	5	1	27	8	0.0	-64.0
Italy	884	770	70	19	859	281	0.3	-2.8
Portugal	205	189	15	1	205	103	0.1	0.0
Serbia	20	20	2	0	22	13	0.0	10.0
Slovenia	16	30	5	0	35	19	0.0	118.8
Spain	1,888	2,393	40	14	2,447	1,151	0.9	29.6
Turkey	131	158	35	3	196	55	0.1	49.6
Other Europe	518	118	19	10	147	61	0.1	-71.6
Americas	12,721	11,448	829	378	12,655	5,258	4.5	-0.5
Argentina	171	248	4	1	253	118	0.1	48.0
Brazil	277	297	3	8	308	134	0.1	11.2
Canada	2,051	1,725	148	32	1,905	795	0.7	-7.1
Chile	152	222	3	2	227	118	0.1	49.3
Colombia	125	136	1	4	141	75	0.0	12.8
Costa Rica	17	9	0	2	11	6	0.0	-35.3
Ecuador	33	11	2	0	13	7	0.0	-60.6
Mexico	206	346	4	0	350	172	0.1	69.9
Peru	36	67	1	0	68	32	0.0	88.9
United States	9,251	8,249	649	322	9,220	3,738	3.2	-0.3
Uruguay	30	26	1	0	27	10	0.0	-10.0
Other Americas	372	112	13	7	132	53	0.0	-64.5
Africa	425	320	39	11	370	141	0.1	-12.9
Cameroon	15	11	1	1	13	2	0.0	-13.3
Congo	6	4	0	0	4	1	0.0	-33.3
Ghana	9	2	0	0	2	1	0.0	-77.8
Kenya	19	13	2	0	15	6	0.0	-21.1
Liberia	4	0	0	0	0	0	0.0	-100.0
Nigeria	42	28	23	3	54	5	0.0	28.6
Sudan	4	2	0	0	2	0	0.0	-50.0
South Africa	234	246	10	5	261	116	0.1	11.5
Uganda	5	1	0	0	1	0	0.0	-80.0
Other Africa	87	13	3	2	18	10	0.0	-79.3
Middle East	860	816	37	12	865	285	0.3	0.6
Egypt	33	14	13	1	28	7	0.0	-15.2
Iran	46	45	2	1	48	10	0.0	4.3
Iraq	10	5	0	0	5	2	0.0	-50.0
Israel	570	611	18	8	637	251	0.2	11.8
Kuwait	72	84	0	0	84	2	0.0	16.7
Oman	14	10	0	0	10	0	0.0	-28.6
Palestine	9	3	0	0	3	0	0.0	-66.7
Qatar	4	6	0	0	6	1	0.0	50.0
Saudi Arabia	6	10	0	0	10	0	0.0	66.7
United Arab Emirates	29	7	0	0	7	0	0.0	-75.9
Yemen	11	12	2	0	14	4	0.0	27.3
Other Middle East	56	9	2	2	13	8	0.0	-76.8

Remark:

- Cambodian outbound tourist departures: 69,420
- International outbound tourist departures: 346,436

COMPILED BY:

1. Mr. Kong Sopheareak

Director
Statistics & Tourism Information Department
Fax: +855 23 885003
E-mail: kong@mot.gov.kh

2. Mr. Horth Vanny

Chief of Tourism Statistics Office
Compile and data analysis
Tel.: +855 12 827664