



KINGDOM OF CAMBODIA
NATION RELIGION KING



TOURISM STATISTICS REPORT

November 2013

MINISTRY OF TOURISM

Statistics and Tourism Information Department

No. A3, Street 169, Sangkat Veal Vong, Khan 7 Makara, Phnom Penh, Cambodia.

Fax: +855 23 885003

E-mail: kong@mot.gov.kh

Web site: www.mot.gov.kh

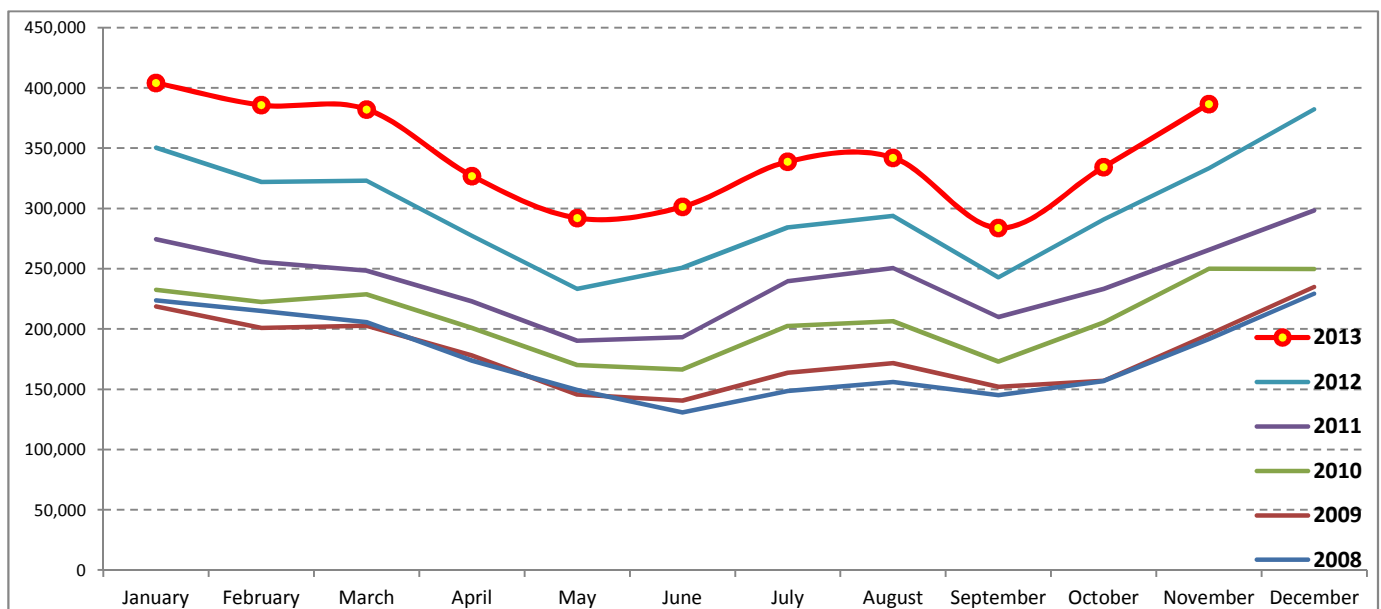
Tourism Highlights

International Tourist Arrivals, Average Length of Stay, Hotels Occupancy & Tourism Receipts 1993 - 2012

Years	Tourist Arrivals		Average Length	Hotels Occupancy	Tourism Receipts
	number	change (%)	of Stay (days)	(%)	(Million US\$)
1993	118,183	-	N/A	N/A	N/A
1994	176,617	49.4	N/A	N/A	N/A
1995	219,680	24.4	8.00	37.00	100
1996	260,489	18.6	7.50	40.00	118
1997	218,843	-16.0	6.40	30.00	103
1998	286,524	30.9	5.20	40.00	166
1999	367,743	28.3	5.50	44.00	190
2000	466,365	26.8	5.50	45.00	228
2001	604,919	29.7	5.50	48.00	304
2002	786,524	30.0	5.80	50.00	379
2003	701,014	-10.9	5.50	50.00	347
2004	1,055,202	50.5	6.30	52.00	578
2005	1,421,615	34.7	6.30	52.00	832
2006	1,700,041	19.6	6.50	54.79	1,049
2007	2,015,128	18.5	6.50	54.79	1,400
2008	2,125,465	5.5	6.65	62.68	1,595
2009	2,161,577	1.7	6.45	63.57	1,561
2010	2,508,289	16.0	6.45	65.74	1,786
2011	2,881,862	14.9	6.50	66.15	1,912
2012	3,584,307	24.4	6.30	68.49	2,210

International tourist arrivals to Cambodia

Destination	Months	2008	2009	2010	2011	2012	2013	change (%) 2013*/12
Cambodia	Q1	644,205	622,288	683,692	778,467	995,210	1,172,072	17.8
<i>International tourist arrivals</i>	January	223,581	218,691	232,590	274,471	350,257	404,106	15.4
<i>by all means of</i>	February	214,902	200,789	222,354	255,499	321,870	385,760	19.8
<i>transportations</i>	March	205,722	202,808	228,748	248,497	323,083	382,206	18.3
	Q2	454,031	464,230	537,464	606,562	761,442	920,527	20.9
	April	173,903	177,955	200,965	223,032	277,304	327,000	17.9
	May	149,275	145,564	170,164	190,258	233,220	292,115	25.3
	June	130,853	140,711	166,335	193,272	250,918	301,412	20.1
	Q3	449,693	487,422	582,024	699,760	820,888	964,612	17.5
	July	148,449	163,817	202,349	239,527	284,282	338,761	19.2
	August	156,098	171,668	206,563	250,429	293,859	342,064	16.4
	September	145,146	151,937	173,112	209,804	242,747	283,787	16.9
	Q4	577,536	587,637	705,109	797,073	1,006,767	721,147	
	October	156,718	157,105	205,515	233,190	290,959	334,410	14.9
	November	191,549	195,570	249,892	265,539	333,482	386,737	
	December	229,269	234,962	249,702	298,344	382,326		
	Total	2,125,465	2,161,577	2,508,289	2,881,862	3,584,307	3,778,358	18.0



Source: Statistics and Tourism Information Department, MOT

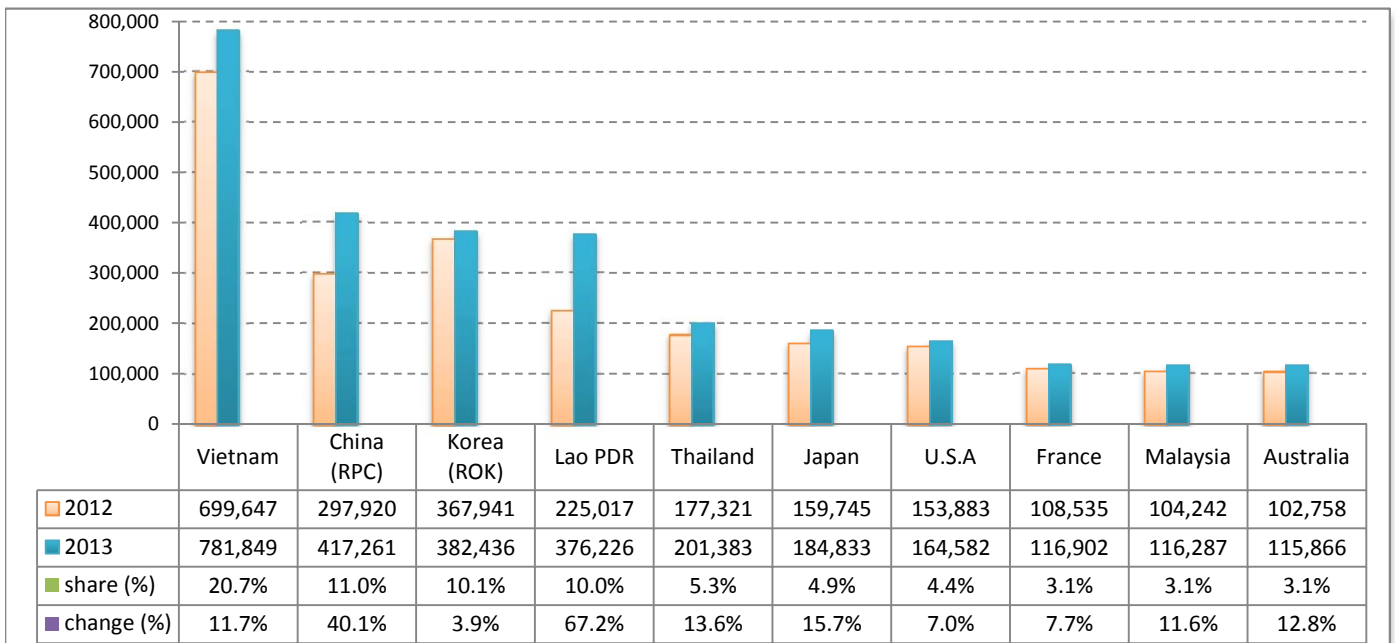
Executive Summary Report in the First Eleven Months of 2013

I. International tourist arrivals to Cambodia in January - November 2013 was: **3,778,358**

II. Mode of arrivals

	arrivals	share (%)
Air	1,790,696	47.4
Phnom Penh Int'l Airport	750,049	19.9
Siem Reap Int'l Airport	1,040,647	27.5
Land and Water ways	1,987,662	52.6
Land	1,921,301	50.9
Waterway	66,361	1.8
Total	3,778,358	100.0

III. Top ten markets arrivals in January - November 2013



IV. International tourist arrivals to Cambodia in January - November 2013

	Inbound tourism		share (%)		change (%)
	2012	2013	2012	2013	2013*/12
Air	1,531,161	1,790,696	47.8	47.4	17.0
Phnom Penh Int'l Airport	641,407	750,049	20.0	19.9	16.9
Siem Reap Int'l Airport	889,754	1,040,647	27.8	27.5	17.0
Land and Water ways	1,670,820	1,987,662	52.2	52.6	19.0
Land	1,602,747	1,921,301	50.1	50.9	19.9
Waterway	68,073	66,361	2.1	1.8	-2.5
Total	3,201,981	3,778,358	100.0	100.0	18.0

V. Remark: Percentage share of international tourist arrivals at destinations in January - November 2013

	Arrivals		share (%)		change (%)
	2012	2013	2012	2013	2013*/12
Phnom Penh & Other Destinations	1,365,087	1,793,441	42.6	47.5	31.4
Siem Reap Province	1,836,894	1,984,917	57.4	52.5	8.1
Total	3,201,981	3,778,358	100.0	100.0	18.0

VI. Outbound tourism in January - November 2013

	Outbound tourism		change (%)
	2012	2013	2013*/12
Cambodian outbound tourists	726,217	799,337	10.1
International outbound tourists	3,130,454	3,756,374	20.0

International Tourist Arrivals to Cambodia by Country of Residence in January - November 2013

(by all mean of transportations)

Regions Country of Residence	2012		2013			share		change
		Purpose of Visit	Total	Female	share (%)	change (%)		
							Holiday	Business
GRAND TOTAL	3,201,981	3,576,503	171,561	30,294	3,778,358	1,775,077	100.0	18.0
Asia and the Pacific	2,432,025	2,756,068	137,754	17,532	2,911,354	1,394,578	77.1	19.7
ASEAN (South-East Asia)	1,365,643	1,619,750	37,042	8,499	1,665,291	824,720	44.1	21.9
Brunei Darussalam	875	583	10	47	640	266	0.0	-26.9
Indonesia	20,164	21,515	3,650	230	25,395	7,754	0.7	25.9
Lao PDR	225,017	375,710	109	407	376,226	243,006	10.0	67.2
Malaysia	104,242	108,554	7,531	202	116,287	40,903	3.1	11.6
Myanmar	4,058	3,873	525	264	4,662	1,915	0.1	14.9
Philippines	88,616	101,799	6,298	704	108,801	64,447	2.9	22.8
Singapore	45,703	47,490	2,391	167	50,048	17,623	1.3	9.5
Thailand	177,321	188,340	9,027	4,016	201,383	85,395	5.3	13.6
Vietnam	699,647	771,886	7,501	2,462	781,849	363,411	20.7	11.7
North-East Asia	916,299	983,998	89,844	6,067	1,079,909	501,340	28.6	17.9
China (RPC)	297,920	362,487	52,221	2,553	417,261	198,844	11.0	40.1
Hong Kong SAR	7,038	6,881	181	12	7,074	3,558	0.2	0.5
Japan	159,745	172,167	10,858	1,808	184,833	77,299	4.9	15.7
Korea (ROK)	367,941	365,405	15,490	1,541	382,436	184,327	10.1	3.9
Mongolia	315	303	25	23	351	163	0.0	11.4
Taiwan, China	83,340	76,755	11,069	130	87,954	37,149	2.3	5.5
Southern Asia	21,649	21,753	3,827	922	26,502	6,866	0.7	22.4
Afghanistan	130	235	3	28	266	23	0.0	104.6
Bangladesh	1,161	1,189	209	136	1,534	186	0.0	32.1
Bhutan	123	53	12	19	84	26	0.0	-31.7
India	16,634	17,630	2,594	474	20,698	5,776	0.5	24.4
Nepal	1,275	976	244	128	1,348	325	0.0	5.7
Pakistan	1,056	605	387	71	1,063	171	0.0	0.7
Srilanka	1,270	1,065	378	66	1,509	359	0.0	18.8
Western Asia	2,117	2,499	230	24	2,753	1,516	0.1	30.0
Kazakhstan	1,604	2,016	185	17	2,218	1,191	0.1	38.3
Uzbekistan	513	483	45	7	535	325	0.0	4.3
Oceania	119,355	125,227	6,489	1,777	133,493	58,638	3.5	11.8
Australia	102,758	108,786	5,505	1,575	115,866	51,201	3.1	12.8
Fiji	101	71	14	10	95	33	0.0	-5.9
New Zealand	16,496	16,370	970	192	17,532	7,404	0.5	6.3
Other Asia & the Pacific	6,962	2,841	322	243	3,406	1,498	0.1	-51.1
Europe	538,238	588,628	21,659	7,167	617,454	271,850	16.3	14.7
Northern Europe	142,934	151,165	6,692	1,664	159,521	63,955	4.2	11.6
Denmark	8,996	8,971	294	114	9,379	3,849	0.2	4.3
Finland	5,370	5,361	230	104	5,695	2,096	0.2	6.1
Iceland	499	692	47	13	752	312	0.0	50.7
Ireland	8,072	8,847	360	85	9,292	3,999	0.2	15.1
Norway	7,345	8,095	265	101	8,461	3,494	0.2	15.2
Sweden	13,587	13,230	487	207	13,924	5,311	0.4	2.5
United Kingdom	99,065	105,969	5,009	1,040	112,018	44,894	3.0	13.1
Western Europe	229,248	238,983	10,967	4,352	254,302	107,036	6.7	10.9
Austria	7,224	7,744	200	94	8,038	3,302	0.2	11.3
Belgium	13,043	13,333	661	236	14,230	5,754	0.4	9.1
France	108,535	107,559	6,782	2,561	116,902	49,848	3.1	7.7
Germany	63,161	69,147	1,833	860	71,840	30,045	1.9	13.7
Luxembourg	409	470	13	6	489	209	0.0	19.6
Monaco	45	96	6	1	103	55	0.0	128.9
Netherlands	21,333	23,847	879	337	25,063	10,464	0.7	17.5
Switzerland	15,498	16,787	593	257	17,637	7,359	0.5	13.8
Central / Eastern Europe	108,401	140,404	2,023	427	142,854	75,279	3.8	31.8
Bulgaria	560	801	11	16	828	402	0.0	47.9
Czech Republic	3,613	4,101	113	48	4,262	1,777	0.1	18.0
Estonia	863	1,069	38	27	1,134	458	0.0	31.4
Hungary	2,232	2,601	33	23	2,657	1,180	0.1	19.0
Lithuania	956	1,436	11	2	1,449	697	0.0	51.6
Poland	8,643	11,126	84	57	11,267	5,636	0.3	30.4
Romania	1,115	1,209	66	7	1,282	652	0.0	15.0
Russian Federation	84,589	111,339	1,478	190	113,007	61,072	3.0	33.6
Slovakia	1,533	1,808	94	37	1,939	800	0.1	26.5
Ukraine	4,297	4,914	95	20	5,029	2,605	0.1	17.0

International Tourist Arrivals to Cambodia by Country of Residence in January - November 2013

(by all mean of transportations)

Regions Country of Residence	2012		2013			Total	Female	share	change
	Purpose of Visit			2013*	2013*/12				
	Holiday	Business	Other			(%)	(%)		
GRAND TOTAL	3,201,981	3,576,503	171,561	30,294	3,778,358	1,775,077	100.0	18.0	
Southern Europe	51,828	55,569	1,759	554	57,882	24,357	1.5	11.7	
Croatia	613	623	22	10	655	291	0.0	6.9	
Greece	930	928	35	9	972	333	0.0	4.5	
Italy	19,753	21,286	734	254	22,274	8,560	0.6	12.8	
Portugal	2,646	3,504	127	22	3,653	1,743	0.1	38.1	
Serbia	361	492	34	14	540	289	0.0	49.6	
Slovenia	792	982	50	8	1,040	429	0.0	31.3	
Spain	23,753	23,908	412	183	24,503	11,307	0.6	3.2	
Turkey	2,980	3,846	345	54	4,245	1,405	0.1	42.4	
Other Europe	5,827	2,507	218	170	2,895	1,223	0.1	-50.3	
Americas	217,305	218,263	11,246	5,167	234,676	103,492	6.2	8.0	
Argentina	4,213	5,211	37	49	5,297	2,654	0.1	25.7	
Brazil	4,450	5,894	57	61	6,012	2,871	0.2	35.1	
Canada	42,643	42,914	2,116	511	45,541	20,245	1.2	6.8	
Chile	2,704	3,585	71	19	3,675	1,859	0.1	35.9	
Colombia	1,345	1,501	37	27	1,565	764	0.0	16.4	
Costa Rica	230	268	9	8	285	136	0.0	23.9	
Ecuador	173	203	12	10	225	105	0.0	30.1	
Mexico	3,665	4,253	42	32	4,327	2,154	0.1	18.1	
Peru	519	570	34	14	618	304	0.0	19.1	
United States	153,883	151,627	8,658	4,297	164,582	71,196	4.4	7.0	
Uruguay	473	588	8	8	604	285	0.0	27.7	
Other Americas	3,007	1,649	165	131	1,945	919	0.1	-35.3	
Africa	4,780	4,214	526	261	5,001	1,928	0.1	4.6	
Cameroon	210	104	5	20	129	16	0.0	-38.6	
Congo	59	41	3	8	52	14	0.0	-11.9	
Ghana	139	108	8	12	128	42	0.0	-7.9	
Kenya	222	191	18	41	250	120	0.0	12.6	
Liberia	90	42	0	2	44	9	0.0	-51.1	
Nigeria	530	294	241	39	574	59	0.0	8.3	
Sudan	44	45	7	4	56	6	0.0	27.3	
South Africa	2,862	3,035	198	74	3,307	1,463	0.1	15.5	
Uganda	73	46	3	12	61	20	0.0	-16.4	
Other Africa	551	308	43	49	400	179	0.0	-27.4	
Middle East	9,633	9,330	376	167	9,873	3,229	0.3	2.5	
Egypt	192	230	57	14	301	58	0.0	56.8	
Iran	584	570	24	5	599	153	0.0	2.6	
Iraq	80	117	4	7	128	36	0.0	60.0	
Israel	7,078	6,457	256	43	6,756	2,674	0.2	-4.5	
Kuwait	663	1,024	2	25	1,051	43	0.0	58.5	
Oman	139	186	0	2	188	21	0.0	35.3	
Palestine	44	82	2	6	90	14	0.0	104.5	
Qatar	66	82	0	9	91	38	0.0	37.9	
Saudi Arabia	75	130	2	6	138	22	0.0	84.0	
United Arab Emirates	224	136	0	2	138	18	0.0	-38.4	
Yemen	148	109	8	14	131	25	0.0	-11.5	
Other Middle East	340	207	21	34	262	127	0.0	-22.9	

Remark:

- Cambodian outbound tourist departures: 799,337
 - International outbound tourist departures: 3,756,374

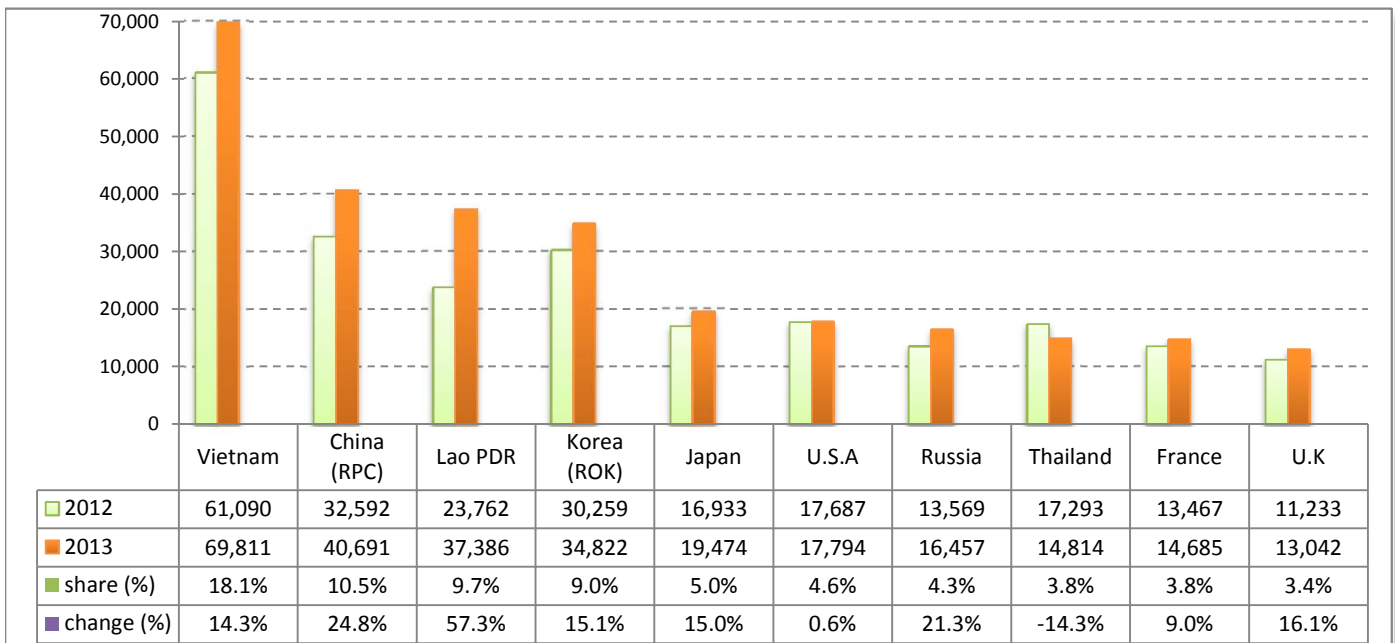
Executive Summary Report in November 2013

I. International tourist arrivals to Cambodia in November 2013 was: **386,737**

II. Mode of arrivals

	arrivals	share (%)
Air	197,409	51.0
Phnom Penh Int'l Airport	81,430	21.1
Siem Reap Int'l Airport	115,979	30.0
Land and Water ways	189,328	49.0
Land	181,464	46.9
Waterway	7,864	2.0
Total	386,737	100.0

III. Top ten markets arrivals in November 2013



IV. International tourist arrivals to Cambodia in November 2013

	Inbound tourism		share (%)		change (%)
	2012	2013	2012	2013	2013*/12
Air	168,833	197,409	50.6	51.0	16.9
Phnom Penh Int'l Airport	70,588	81,430	21.2	21.1	15.4
Siem Reap Int'l Airport	98,245	115,979	29.5	30.0	18.1
Land and Water ways	164,649	189,328	49.4	49.0	15.0
Land	156,776	181,464	47.0	46.9	15.7
Waterway	7,873	7,864	2.4	2.0	-0.1
Total	333,482	386,737	100.0	100.0	16.0

V. Remark: Percentage share of international tourist arrivals at destinations in November 2013

	Arrivals		share (%)		change (%)
	2012	2013	2012	2013	2013*/12
Phnom Penh & Other Destinations	142,868	172,006	42.8	44.5	20.4
Siem Reap Province	190,614	214,731	57.2	55.5	12.7
Total	333,482	386,737	100.0	100.0	16.0

VI. Outbound tourism in November 2013

	Outbound tourism		change (%)
	2012	2013	2013*/12
Cambodian outbound tourists	69,977	76,657	9.5
International outbound tourists	315,143	370,712	17.6

International Tourist Arrivals to Cambodia by Country of Residence in November 2013

(by all mean of transportations)

Regions Country of Residence	2012	2013			Total	Female	share	change
		Purpose of Visit					(%)	(%)
		Holiday	Business	Other			2013*	2013*/12
GRAND TOTAL	333,482	368,544	15,853	2,340	386,737	185,195	100.0	16.0
Asia and the Pacific	236,753	264,586	12,550	1,323	278,459	135,025	72.0	17.6
ASEAN (South-East Asia)	131,595	151,219	3,707	590	155,516	77,987	40.2	18.2
Brunei Darussalam	149	96	0	0	96	44	0.0	-35.6
Indonesia	2,192	2,036	419	19	2,474	650	0.6	12.9
Lao PDR	23,762	37,333	7	46	37,386	24,599	9.7	57.3
Malaysia	11,929	12,314	649	8	12,971	4,956	3.4	8.7
Myanmar	454	431	43	51	525	190	0.1	15.6
Philippines	8,623	10,106	683	61	10,850	6,471	2.8	25.8
Singapore	6,103	6,335	247	7	6,589	2,607	1.7	8.0
Thailand	17,293	13,729	909	176	14,814	5,961	3.8	-14.3
Vietnam	61,090	68,839	750	222	69,811	32,509	18.1	14.3
North-East Asia	88,439	97,132	7,721	488	105,341	49,584	27.2	19.1
China (RPC)	32,592	36,368	4,101	222	40,691	19,981	10.5	24.8
Hong Kong SAR	939	1,307	22	0	1,329	721	0.3	41.5
Japan	16,933	18,188	1,161	125	19,474	8,553	5.0	15.0
Korea (ROK)	30,259	33,327	1,368	127	34,822	16,526	9.0	15.1
Mongolia	26	14	0	1	15	11	0.0	-42.3
Taiwan, China	7,690	7,928	1,069	13	9,010	3,792	2.3	17.2
Southern Asia	2,197	1,960	416	80	2,456	570	0.6	11.8
Afghanistan	10	14	1	9	24	0	0.0	140.0
Bangladesh	167	67	23	15	105	11	0.0	-37.1
Bhutan	3	4	0	1	5	4	0.0	66.7
India	1,719	1,630	264	34	1,928	481	0.5	12.2
Nepal	106	95	32	11	138	33	0.0	30.2
Pakistan	101	51	53	7	111	11	0.0	9.9
Srilanka	91	99	43	3	145	30	0.0	59.3
Western Asia	246	262	19	2	283	159	0.1	15.0
Kazakhstan	200	224	6	1	231	137	0.1	15.5
Uzbekistan	46	38	13	1	52	22	0.0	13.0
Oceania	14,125	13,716	675	157	14,548	6,571	3.8	3.0
Australia	11,573	11,722	561	143	12,426	5,669	3.2	7.4
Fiji	11	7	1	0	8	2	0.0	-27.3
New Zealand	2,541	1,987	113	14	2,114	900	0.5	-16.8
Other Asia & the Pacific	151	297	12	6	315	154	0.1	108.6
Europe	70,786	78,183	2,157	599	80,939	37,807	20.9	14.3
Northern Europe	16,801	17,426	656	135	18,217	7,584	4.7	8.4
Denmark	1,311	927	28	13	968	403	0.3	-26.2
Finland	670	506	20	12	538	209	0.1	-19.7
Iceland	63	31	7	0	38	20	0.0	-39.7
Ireland	845	1,076	39	6	1,121	491	0.3	32.7
Norway	833	943	34	8	985	412	0.3	18.2
Sweden	1,846	1,453	61	11	1,525	651	0.4	-17.4
United Kingdom	11,233	12,490	467	85	13,042	5,398	3.4	16.1
Western Europe	29,883	32,243	1,078	367	33,688	15,150	8.7	12.7
Austria	1,006	1,070	18	13	1,101	516	0.3	9.4
Belgium	1,701	1,806	66	19	1,891	844	0.5	11.2
France	13,467	13,801	701	183	14,685	6,462	3.8	9.0
Germany	9,057	10,329	166	100	10,595	4,946	2.7	17.0
Luxembourg	69	69	1	1	71	34	0.0	2.9
Monaco	4	2	0	0	2	1	0.0	-50.0
Netherlands	2,541	2,565	82	25	2,672	1,138	0.7	5.2
Switzerland	2,038	2,601	44	26	2,671	1,209	0.7	31.1
Central / Eastern Europe	18,037	21,522	228	32	21,782	11,912	5.6	20.8
Bulgaria	80	172	0	0	172	86	0.0	115.0
Czech Republic	619	678	55	5	738	321	0.2	19.2
Estonia	209	166	1	0	167	73	0.0	-20.1
Hungary	315	349	2	2	353	172	0.1	12.1
Lithuania	178	269	0	0	269	118	0.1	51.1
Poland	2,074	2,434	5	8	2,447	1,257	0.6	18.0
Romania	115	184	7	0	191	83	0.0	66.1
Russian Federation	13,569	16,305	138	14	16,457	9,344	4.3	21.3
Slovakia	228	251	9	3	263	104	0.1	15.4
Ukraine	650	714	11	0	725	354	0.2	11.5

International Tourist Arrivals to Cambodia by Country of Residence in November 2013

(by all mean of transportations)

Regions Country of Residence	2012	2013			Total	Female	share	change
	Purpose of Visit			(%)			(%)	
	Holiday	Business	Other	2013*	2013*/12			
GRAND TOTAL	333,482	368,544	15,853	2,340	386,737	185,195	100.0	16.0
Southern Europe	5,944	6,728	185	61	6,974	3,058	1.8	17.3
Croatia	100	99	5	1	105	43	0.0	5.0
Greece	70	66	5	2	73	26	0.0	4.3
Italy	2,353	2,848	93	37	2,978	1,265	0.8	26.6
Portugal	373	504	18	0	522	246	0.1	39.9
Serbia	49	64	3	1	68	36	0.0	38.8
Slovenia	100	81	1	0	82	36	0.0	-18.0
Spain	2,597	2,754	43	18	2,815	1,304	0.7	8.4
Turkey	302	312	17	2	331	102	0.1	9.6
Other Europe	121	264	10	4	278	103	0.1	129.8
Americas	24,693	24,519	1,074	390	25,983	11,908	6.7	5.2
Argentina	371	388	3	4	395	204	0.1	6.5
Brazil	506	649	8	5	662	340	0.2	30.8
Canada	5,139	5,628	203	57	5,888	2,727	1.5	14.6
Chile	184	254	4	0	258	119	0.1	40.2
Colombia	110	145	0	1	146	70	0.0	32.7
Costa Rica	14	37	0	1	38	9	0.0	171.4
Ecuador	13	28	0	0	28	10	0.0	115.4
Mexico	498	475	3	1	479	259	0.1	-3.8
Peru	66	48	3	0	51	30	0.0	-22.7
United States	17,687	16,635	841	318	17,794	8,050	4.6	0.6
Uruguay	28	35	0	0	35	17	0.0	25.0
Other Americas	77	197	9	3	209	73	0.1	171.4
Africa	410	399	41	14	454	162	0.1	10.7
Cameroon	7	12	1	0	13	1	0.0	85.7
Congo	5	2	0	1	3	0	0.0	-40.0
Ghana	9	2	1	0	3	1	0.0	-66.7
Kenya	18	24	1	2	27	12	0.0	50.0
Liberia	8	1	0	1	2	0	0.0	-75.0
Nigeria	50	26	16	3	45	4	0.0	-10.0
Sudan	3	7	0	0	7	0	0.0	133.3
South Africa	278	290	18	5	313	133	0.1	12.6
Uganda	10	13	1	1	15	3	0.0	50.0
Other Africa	22	22	3	1	26	8	0.0	18.2
Middle East	840	857	31	14	902	293	0.2	7.4
Egypt	25	20	5	0	25	4	0.0	0.0
Iran	65	53	2	1	56	12	0.0	-13.8
Iraq	4	8	2	1	11	3	0.0	175.0
Israel	606	634	21	1	656	249	0.2	8.3
Kuwait	66	73	0	10	83	7	0.0	25.8
Oman	18	14	0	0	14	5	0.0	-22.2
Palestine	4	3	0	0	3	0	0.0	-25.0
Qatar	5	0	0	0	0	0	0.0	-100.0
Saudi Arabia	6	17	0	0	17	4	0.0	183.3
United Arab Emirates	19	8	0	0	8	2	0.0	-57.9
Yemen	11	8	0	0	8	1	0.0	-27.3
Other Middle East	11	19	1	1	21	6	0.0	90.9

Remark:

- Cambodian outbound tourist departures: 76,657
- International outbound tourist departures: 370,712

COMPILED BY:

1. Mr. Kong Sopheareak

Director
Statistics & Tourism Information Department
Fax: +855 23 885003
E-mail: kong@mot.gov.kh

2. Mr. Horth Vanny

Chief of Tourism Statistics Office
Compile and data analysis
Tel.: +855 12 827664