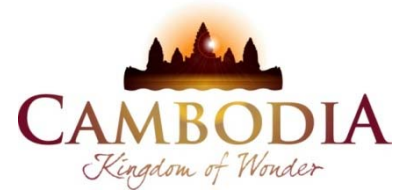




KINGDOM OF CAMBODIA
NATION RELIGION KING



TOURISM STATISTICS REPORT

October 2014

MINISTRY OF TOURISM

Statistics and Tourism Information Department

No. A3, Street 169, Sangkat Veal Vong, Khan 7 Makara, Phnom Penh, Cambodia.

Fax: +855 23 885003

E-mail: kong@mot.gov.kh

Web site: www.mot.gov.kh

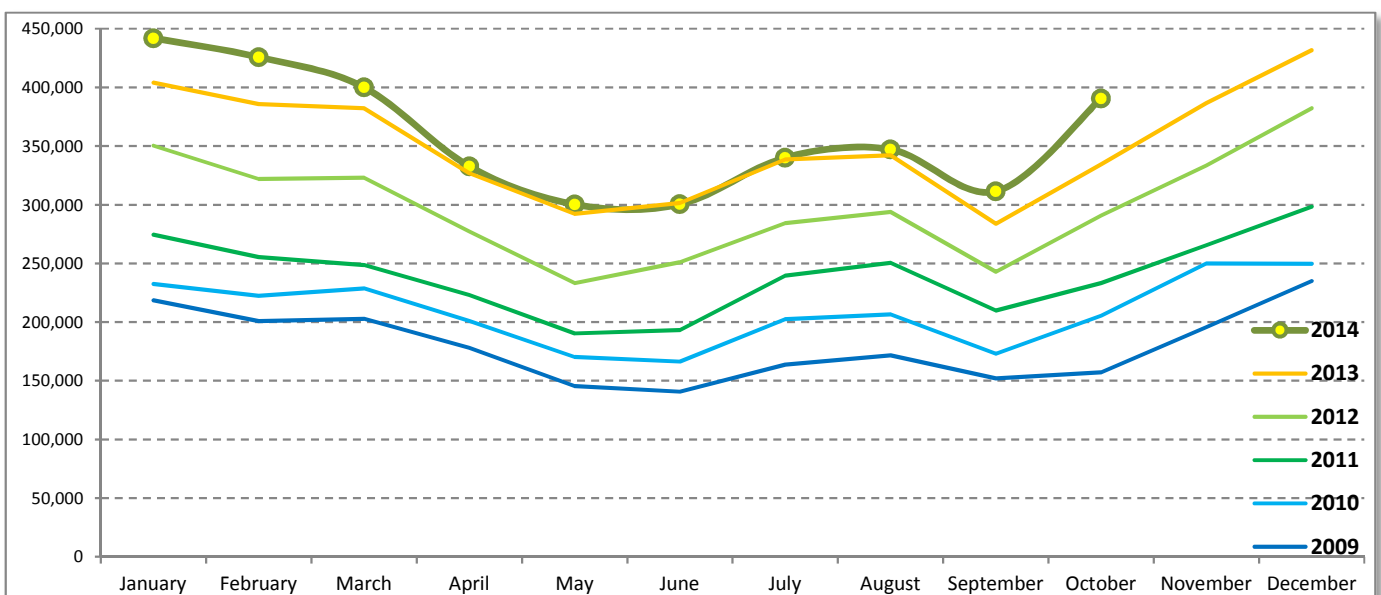
Tourism Highlights

International Tourist Arrivals, Average Length of Stay, Hotels Occupancy & Tourism Receipts 1993 - 2013

Years	Int'l Tourist Arrivals		Average Length	Hotels Occupancy	Tourism Receipts
	Number	Change (%)	of Stay (Days)	(%)	(Million US\$)
1993	118,183	-	N/A	N/A	N/A
1994	176,617	49.4	N/A	N/A	N/A
1995	219,680	24.4	8.00	37.00	100
1996	260,489	18.6	7.50	40.00	118
1997	218,843	-16.0	6.40	30.00	103
1998	286,524	30.9	5.20	40.00	166
1999	367,743	28.3	5.50	44.00	190
2000	466,365	26.8	5.50	45.00	228
2001	604,919	29.7	5.50	48.00	304
2002	786,524	30.0	5.80	50.00	379
2003	701,014	-10.9	5.50	50.00	347
2004	1,055,202	50.5	6.30	52.00	578
2005	1,421,615	34.7	6.30	52.00	832
2006	1,700,041	19.6	6.50	54.79	1,049
2007	2,015,128	18.5	6.50	54.79	1,400
2008	2,125,465	5.5	6.65	62.68	1,595
2009	2,161,577	1.7	6.45	63.57	1,561
2010	2,508,289	16.0	6.45	65.74	1,786
2011	2,881,862	14.9	6.50	66.15	1,912
2012	3,584,307	24.4	6.30	68.49	2,210
2013	4,210,165	17.5	6.75	69.53	2,547

International tourist arrivals to Cambodia

Destination	Months	2009	2010	2011	2012	2013	2014	change (%) 2014*/13
Cambodia	Q1	622,288	683,692	778,467	995,210	1,172,072	1,267,922	8.2
<i>International tourist arrivals by all means of transportations</i>	January	218,691	232,590	274,471	350,257	404,106	442,045	9.4
	February	200,789	222,354	255,499	321,870	385,760	425,801	10.4
	March	202,808	228,748	248,497	323,083	382,206	400,076	4.7
	Q2	464,230	537,464	606,562	761,442	920,527	933,446	1.4
	April	177,955	200,965	223,032	277,304	327,000	332,690	1.7
	May	145,564	170,164	190,258	233,220	292,115	300,302	2.8
	June	140,711	166,335	193,272	250,918	301,412	300,454	-0.3
	Q3	487,422	582,024	699,760	820,888	964,612	998,690	3.5
	July	163,817	202,349	239,527	284,282	338,761	340,091	0.4
	August	171,668	206,563	250,429	293,859	342,064	347,211	1.5
	September	151,937	173,112	209,804	242,747	283,787	311,388	9.7
	Q4	587,637	705,109	797,073	1,006,767	1,152,954	390,637	
	October	157,105	205,515	233,190	290,959	334,410	390,637	16.8
	November	195,570	249,892	265,539	333,482	386,737		
	December	234,962	249,702	298,344	382,326	431,807		
	Total	2,161,577	2,508,289	2,881,862	3,584,307	4,210,165	3,590,695	5.9



Source: Statistics and Tourism Information Department, MOT

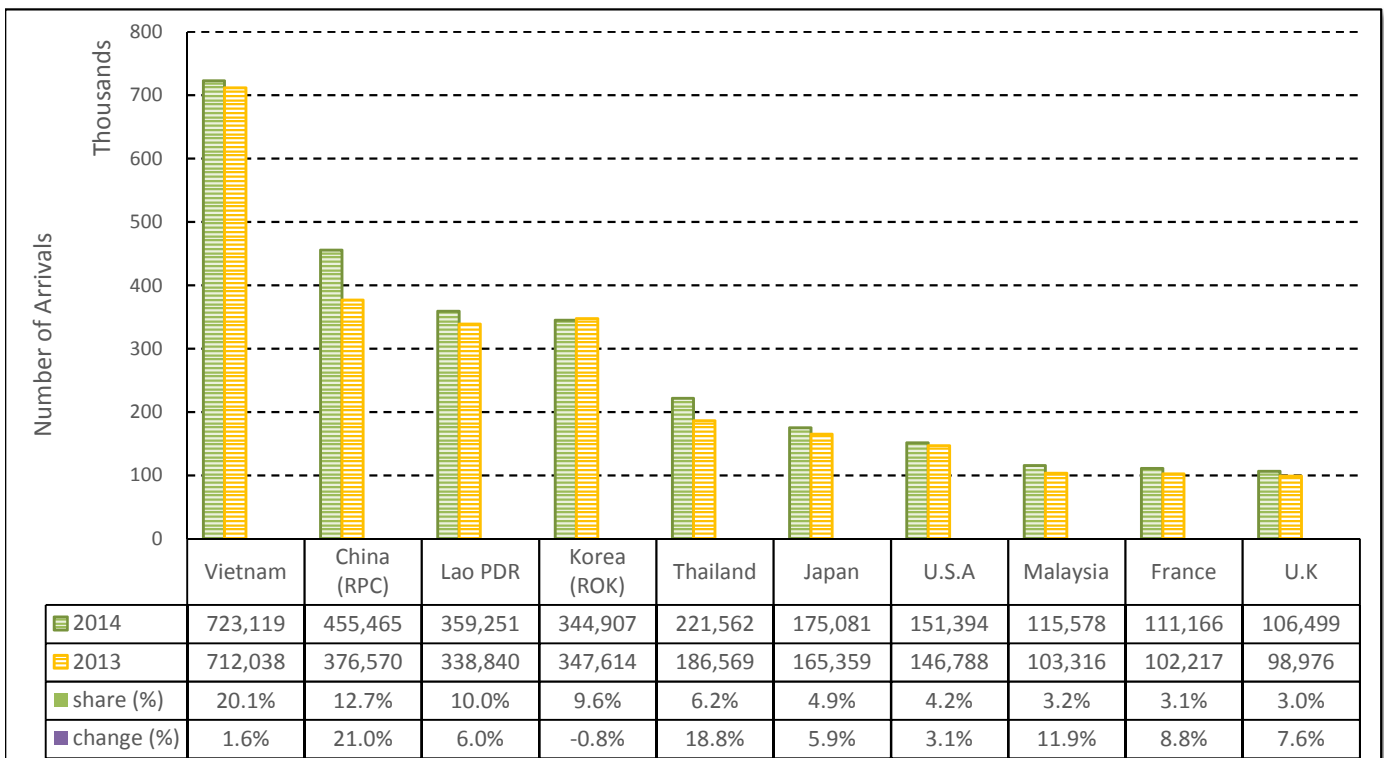
TOURISM STATISTICS REPORT IN THE FIRST TEN MONTHS 2014

I. INBOUND TOURISM

1. International tourist arrivals to Cambodia in January - October 2014

	Inbound tourism		share (%)		change (%)
	2013	2014	2013	2014	2014*/13
Air	1,593,287	1,810,752	47.0	50.4	13.6
Phnom Penh Int'l Airport (PNH)	668,619	738,117	19.7	20.6	10.4
Siem Reap Int'l Airport (REP)	924,668	1,072,635	27.3	29.9	16.0
Land and Water ways	1,798,334	1,779,943	53.0	49.6	-1.0
Land	1,739,837	1,706,118	51.3	47.5	-1.9
Waterway	58,497	73,825	1.7	2.1	26.2
Total	3,391,621	3,590,695	100.0	100.0	5.9

2. Top ten markets arrivals in January - October 2014



II. OUTBOUND TOURISM

Outbound tourism in January - October 2014

	Outbound tourism		change (%)
	2013	2014	2014*/13
Cambodian Outbound Tourists	722,680	789,512	9.2
International Tourists Departure	3,385,662	3,451,436	1.9

III. INTERNAL TOURISM

Foreign visitor arrivals to the regions in January - October 2014

	Arrivals		share (%)		change (%)
	2013	2014	2013	2014	2014*/13
Phnom Penh & Surrounding	1,621,435	1,701,777	41.9	41.4	5.0
Siem Reap Angkor	1,770,186	1,888,918	45.7	46.0	6.7
Coastal Areas	428,453	467,180	11.1	11.4	9.0
Eco-tourism Areas	49,882	50,529	1.3	1.2	1.3
Total	3,869,956	4,108,404	100.0	100.0	6.2

International Tourist Arrivals to Cambodia by Country of Residence in January - October 2014

(by all mean of transportations)

Regions Country of Residence	2013		2014			share		change	
			Purpose of Visit			Total	Female	2014*	2014*/13
			Holiday	Business	Other				
GRAND TOTAL	3,391,621	3,396,305	167,557	26,833	3,590,695	1,621,514	100.0	5.9	
Asia and the Pacific	2,632,895	2,646,912	136,687	16,562	2,800,161	1,275,907	78.0	6.4	
ASEAN (South-East Asia)	1,509,775	1,530,441	41,960	9,524	1,581,925	732,805	44.1	4.8	
Brunei Darussalam	544	693	18	34	745	319	0.0	36.9	
Indonesia	22,921	23,853	4,878	232	28,963	8,010	0.8	26.4	
Lao PDR	338,840	356,938	271	2,042	359,251	208,145	10.0	6.0	
Malaysia	103,316	107,974	7,458	146	115,578	38,847	3.2	11.9	
Myanmar	4,137	4,189	384	127	4,700	1,913	0.1	13.6	
Philippines	97,951	70,463	6,455	592	77,510	44,521	2.2	-20.9	
Singapore	43,459	47,844	2,491	162	50,497	17,001	1.4	16.2	
Thailand	186,569	208,112	10,131	3,319	221,562	84,971	6.2	18.8	
Vietnam	712,038	710,375	9,874	2,870	723,119	329,078	20.1	1.6	
North-East Asia	974,568	974,167	84,387	4,457	1,063,011	479,675	29.6	9.1	
China (RPC)	376,570	405,552	48,221	1,692	455,465	207,162	12.7	21.0	
Hong Kong SAR	5,745	6,381	173	14	6,568	3,164	0.2	14.3	
Japan	165,359	161,393	12,220	1,468	175,081	70,029	4.9	5.9	
Korea (ROK)	347,614	330,733	12,932	1,242	344,907	166,829	9.6	-0.8	
Mongolia	336	280	13	21	314	148	0.0	-6.5	
Taiwan, China	78,944	69,828	10,828	20	80,676	32,343	2.2	2.2	
Southern Asia	24,046	24,135	3,355	795	28,285	8,015	0.8	17.6	
Afghanistan	242	178	9	12	199	51	0.0	-17.8	
Bangladesh	1,429	1,259	232	159	1,650	222	0.0	15.5	
Bhutan	79	63	2	19	84	32	0.0	6.3	
India	18,770	19,885	2,227	383	22,495	6,912	0.6	19.8	
Nepal	1,210	1,102	193	71	1,366	280	0.0	12.9	
Pakistan	952	615	307	78	1,000	169	0.0	5.0	
Srilanka	1,364	1,033	385	73	1,491	349	0.0	9.3	
Western Asia	2,470	2,501	196	14	2,711	1,451	0.1	9.8	
Kazakhstan	1,987	2,087	156	8	2,251	1,200	0.1	13.3	
Uzbekistan	483	414	40	6	460	251	0.0	-4.8	
Oceania	118,945	113,279	6,428	1,500	121,207	52,579	3.4	1.9	
Australia	103,440	98,143	5,300	1,304	104,747	45,775	2.9	1.3	
Fiji	87	87	17	9	113	33	0.0	29.9	
New Zealand	15,418	15,049	1,111	187	16,347	6,771	0.5	6.0	
Other Asia & the Pacific	3,091	2,389	361	272	3,022	1,382	0.1	-2.2	
Europe	536,515	532,254	19,891	5,448	557,593	244,232	15.5	3.9	
Northern Europe	141,304	143,340	5,964	1,406	150,710	61,627	4.2	6.7	
Denmark	8,411	9,448	279	121	9,848	4,100	0.3	17.1	
Finland	5,157	4,932	227	89	5,248	1,956	0.1	1.8	
Iceland	714	636	20	7	663	266	0.0	-7.1	
Ireland	8,171	7,667	200	60	7,927	3,430	0.2	-3.0	
Norway	7,476	7,453	205	50	7,708	3,258	0.2	3.1	
Sweden	12,399	12,248	420	149	12,817	4,960	0.4	3.4	
United Kingdom	98,976	100,956	4,613	930	106,499	43,657	3.0	7.6	
Western Europe	220,614	217,162	10,160	3,118	230,440	96,535	6.4	4.5	
Austria	6,937	6,588	148	31	6,767	2,790	0.2	-2.5	
Belgium	12,339	11,375	541	215	12,131	4,833	0.3	-1.7	
France	102,217	102,893	6,432	1,841	111,166	46,777	3.1	8.8	
Germany	61,245	61,190	1,737	628	63,555	26,448	1.8	3.8	
Luxembourg	418	383	10	6	399	144	0.0	-4.5	
Monaco	101	79	11	2	92	38	0.0	-8.9	
Netherlands	22,391	20,453	677	257	21,387	9,116	0.6	-4.5	
Switzerland	14,966	14,201	604	138	14,943	6,389	0.4	-0.2	
Central / Eastern Europe	121,072	113,175	1,897	300	115,372	59,699	3.2	-4.7	
Bulgaria	656	815	9	18	842	428	0.0	28.4	
Czech Republic	3,524	3,919	73	29	4,021	1,661	0.1	14.1	
Estonia	967	1,366	49	13	1,428	580	0.0	47.7	
Hungary	2,304	2,386	53	19	2,458	1,063	0.1	6.7	
Lithuania	1,180	1,176	14	2	1,192	597	0.0	1.0	
Poland	8,820	8,777	79	41	8,897	4,366	0.2	0.9	
Romania	1,091	1,349	80	9	1,438	730	0.0	31.8	
Russian Federation	96,550	87,205	1,377	131	88,713	47,132	2.5	-8.1	
Slovakia	1,676	1,752	65	29	1,846	807	0.1	10.1	
Ukraine	4,304	4,430	98	9	4,537	2,335	0.1	5.4	

International Tourist Arrivals to Cambodia by Country of Residence in January - October 2014

(by all mean of transportations)

Regions Country of Residence	2013		2014			share		change	
		Purpose of Visit			Total	Female	2014*	2014*/13	
		Holiday	Business	Other					(%)
GRAND TOTAL	3,391,621	3,396,305	167,557	26,833	3,590,695	1,621,514	100.0	5.9	
Southern Europe	50,908	56,597	1,609	451	58,657	25,328	1.6	15.2	
Croatia	550	537	20	8	565	268	0.0	2.7	
Greece	899	920	44	7	971	353	0.0	8.0	
Italy	19,296	22,294	678	182	23,154	9,355	0.6	20.0	
Portugal	3,131	3,242	95	20	3,357	1,492	0.1	7.2	
Serbia	472	545	20	3	568	271	0.0	20.3	
Slovenia	958	749	15	0	764	333	0.0	-20.3	
Spain	21,688	24,906	422	144	25,472	12,035	0.7	17.4	
Turkey	3,914	3,404	315	87	3,806	1,221	0.1	-2.8	
Other Europe	2,617	1,980	261	173	2,414	1,043	0.1	-7.8	
Americas	208,693	203,923	10,261	4,505	218,689	96,147	6.1	4.8	
Argentina	4,902	4,841	39	33	4,913	2,420	0.1	0.2	
Brazil	5,350	7,168	106	40	7,314	3,573	0.2	36.7	
Canada	39,653	38,704	1,822	367	40,893	18,115	1.1	3.1	
Chile	3,417	4,361	98	19	4,478	2,275	0.1	31.1	
Colombia	1,419	1,689	27	20	1,736	878	0.0	22.3	
Costa Rica	247	301	6	5	312	145	0.0	26.3	
Ecuador	197	268	17	6	291	140	0.0	47.7	
Mexico	3,848	4,287	38	26	4,351	2,145	0.1	13.1	
Peru	567	643	25	14	682	334	0.0	20.3	
United States	146,788	139,555	7,968	3,871	151,394	65,054	4.2	3.1	
Uruguay	569	664	2	3	669	331	0.0	17.6	
Other Americas	1,736	1,442	113	101	1,656	737	0.0	-4.6	
Africa	4,547	3,960	413	180	4,553	1,812	0.1	0.1	
Cameroon	116	96	7	12	115	25	0.0	-0.9	
Congo	49	27	4	10	41	12	0.0	-16.3	
Ghana	125	64	6	7	77	27	0.0	-38.4	
Kenya	223	162	13	32	207	101	0.0	-7.2	
Liberia	42	20	2	1	23	2	0.0	-45.2	
Nigeria	529	299	180	27	506	46	0.0	-4.3	
Sudan	49	44	4	17	65	17	0.0	32.7	
South Africa	2,994	2,944	161	31	3,136	1,417	0.1	4.7	
Uganda	46	40	5	3	48	13	0.0	4.3	
Other Africa	374	264	31	40	335	152	0.0	-10.4	
Middle East	8,971	9,256	305	138	9,699	3,416	0.3	8.1	
Egypt	276	228	31	12	271	62	0.0	-1.8	
Iran	543	457	32	12	501	126	0.0	-7.7	
Iraq	117	85	3	1	89	20	0.0	-23.9	
Israel	6,100	6,970	197	53	7,220	2,968	0.2	18.4	
Kuwait	968	776	2	22	800	42	0.0	-17.4	
Oman	174	128	0	1	129	17	0.0	-25.9	
Palestine	87	55	2	0	57	14	0.0	-34.5	
Qatar	91	43	7	2	52	15	0.0	-42.9	
Saudi Arabia	121	127	8	1	136	19	0.0	12.4	
United Arab Emirates	130	89	1	0	90	6	0.0	-30.8	
Yemen	123	111	3	4	118	29	0.0	-4.1	
Other Middle East	241	187	19	30	236	98	0.0	-2.1	

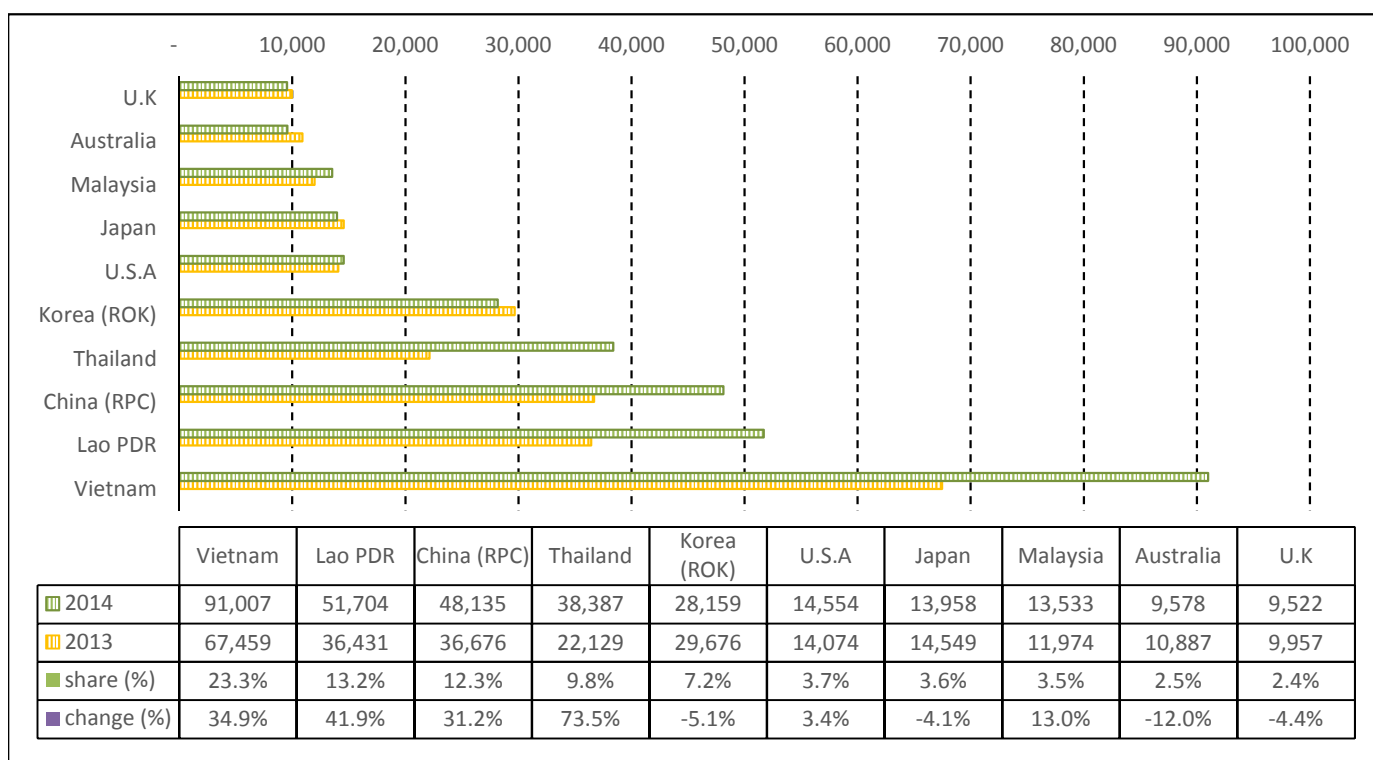
TOURISM STATISTICS REPORT IN OCTOBER 2014

I. INBOUND TOURISM

1. International tourist arrivals to Cambodia in October 2014

	Inbound tourism		share (%)		change (%)
	2013	2014	2013	2014	2014*/13
Air	156,060	176,096	46.7	45.1	12.8
Phnom Penh Int'l Airport (PNH)	67,988	75,375	20.3	19.3	10.9
Siem Reap Int'l Airport (REP)	88,072	100,721	26.3	25.8	14.4
Land and Water ways	178,350	214,541	53.3	54.9	20.3
Land	171,198	206,747	51.2	52.9	20.8
Waterway	7,152	7,794	2.1	2.0	9.0
Total	334,410	390,637	100.0	100.0	16.8

2. Top ten markets arrivals in October 2014



II. OUTBOUND TOURISM

Outbound tourism in October 2014

	Outbound tourism		change (%)
	2013	2014	2014*/13
Cambodian Outbound Tourists	78,287	81,933	4.7
International Tourists Departure	318,058	307,931	-3.2

III. INTERNAL TOURISM

Foreign visitor arrivals to the regions in October 2014

	Arrivals		share (%)		change (%)
	2013	2014	2013	2014	2014*/13
Phnom Penh & Surrounding	138,147	242,900	37.6	55.9	75.8
Siem Reap Angkor	196,263	147,737	53.4	34.0	-24.7
Coastal Areas	28,609	40,758	7.8	9.4	42.5
Eco-tourism Areas	4,845	3,300	1.3	0.8	-31.9
Total	367,864	434,695	100.0	100.0	18.2

International Tourist Arrivals to Cambodia by Country of Residence in October 2014

(by all mean of transportations)

Regions Country of Residence	2013	2014			Total	Female	share	change
		Purpose of Visit					(%)	(%)
		Holiday	Business	Other			2014*	2014*/13
GRAND TOTAL	334,410	367,612	17,203	5,822	390,637	161,496	100.0	16.8
Asia and the Pacific	261,970	305,213	13,995	4,826	324,034	132,886	83.0	23.7
ASEAN (South-East Asia)	156,314	200,857	4,556	3,994	209,407	83,866	53.6	34.0
Brunei Darussalam	57	64	2	1	67	25	0.0	17.5
Indonesia	2,411	2,343	571	10	2,924	800	0.7	21.3
Lao PDR	36,431	50,011	122	1,571	51,704	18,967	13.2	41.9
Malaysia	11,974	12,845	677	11	13,533	4,402	3.5	13.0
Myanmar	362	353	33	8	394	143	0.1	8.8
Philippines	10,776	5,020	536	26	5,582	2,926	1.4	-48.2
Singapore	4,715	5,486	307	16	5,809	1,918	1.5	23.2
Thailand	22,129	36,156	1,020	1,211	38,387	15,839	9.8	73.5
Vietnam	67,459	88,579	1,288	1,140	91,007	38,846	23.3	34.9
North-East Asia	89,729	90,430	8,290	566	99,286	43,069	25.4	10.7
China (RPC)	36,676	42,982	4,800	353	48,135	21,248	12.3	31.2
Hong Kong SAR	990	828	12	3	843	423	0.2	-14.8
Japan	14,549	12,632	1,223	103	13,958	5,447	3.6	-4.1
Korea (ROK)	29,676	26,949	1,107	103	28,159	12,900	7.2	-5.1
Mongolia	62	10	2	2	14	6	0.0	-77.4
Taiwan, China	7,776	7,029	1,146	2	8,177	3,045	2.1	5.2
Southern Asia	2,886	2,979	359	63	3,401	975	0.9	17.8
Afghanistan	5	5	1	0	6	0	0.0	20.0
Bangladesh	123	214	27	23	264	33	0.1	114.6
Bhutan	3	4	1	3	8	4	0.0	166.7
India	2,337	2,447	234	21	2,702	860	0.7	15.6
Nepal	157	119	23	2	144	27	0.0	-8.3
Pakistan	95	62	46	7	115	23	0.0	21.1
Sri Lanka	166	128	27	7	162	28	0.0	-2.4
Western Asia	190	163	8	1	172	102	0.0	-9.5
Kazakhstan	146	128	8	1	137	75	0.0	-6.2
Uzbekistan	44	35	0	0	35	27	0.0	-20.5
Oceania	12,543	10,511	630	104	11,245	4,688	2.9	-10.3
Australia	10,887	8,971	518	89	9,578	4,028	2.5	-12.0
Fiji	12	4	0	2	6	3	0.0	-50.0
New Zealand	1,644	1,536	112	13	1,661	657	0.4	1.0
Other Asia & the Pacific	308	273	152	98	523	186	0.1	69.8
Europe	51,462	42,275	2,022	525	44,822	19,189	11.5	-12.9
Northern Europe	13,319	12,033	610	151	12,794	5,269	3.3	-3.9
Denmark	606	618	23	11	652	266	0.2	7.6
Finland	378	370	47	15	432	157	0.1	14.3
Iceland	31	134	8	3	145	49	0.0	367.7
Ireland	861	552	12	2	566	243	0.1	-34.3
Norway	634	583	22	8	613	243	0.2	-3.3
Sweden	852	815	35	14	864	338	0.2	1.4
United Kingdom	9,957	8,961	463	98	9,522	3,973	2.4	-4.4
Western Europe	19,598	17,719	957	240	18,916	7,767	4.8	-3.5
Austria	543	388	11	2	401	154	0.1	-26.2
Belgium	1,143	834	53	15	902	344	0.2	-21.1
France	8,642	8,196	573	120	8,889	3,611	2.3	2.9
Germany	5,980	5,276	172	67	5,515	2,255	1.4	-7.8
Luxembourg	35	29	1	2	32	10	0.0	-8.6
Monaco	13	29	7	1	37	18	0.0	184.6
Netherlands	1,883	1,623	67	17	1,707	725	0.4	-9.3
Switzerland	1,359	1,344	73	16	1,433	650	0.4	5.4
Central / Eastern Europe	13,011	7,076	192	20	7,288	3,689	1.9	-44.0
Bulgaria	72	51	0	2	53	24	0.0	-26.4
Czech Republic	308	181	8	2	191	64	0.0	-38.0
Estonia	94	108	4	0	112	44	0.0	19.1
Hungary	201	183	5	2	190	80	0.0	-5.5
Lithuania	104	101	2	0	103	52	0.0	-1.0
Poland	870	726	10	2	738	364	0.2	-15.2
Romania	166	137	5	0	142	84	0.0	-14.5
Russian Federation	10,611	5,154	144	10	5,308	2,762	1.4	-50.0
Slovakia	108	155	7	1	163	67	0.0	50.9
Ukraine	477	280	7	1	288	148	0.1	-39.6

Source: Statistics and Tourism Information Department, MOT

International Tourist Arrivals to Cambodia by Country of Residence in October 2014

(by all mean of transportations)

Regions Country of Residence	2013		2014			share		change	
			Purpose of Visit			Total	Female	(%)	(%)
			Holiday	Business	Other			2014*	2014*/13
GRAND TOTAL	334,410	367,612	17,203	5,822	390,637	161,496	100.0	16.8	
Southern Europe	5,263	5,199	142	51	5,392	2,300	1.4	2.5	
Croatia	41	23	4	1	28	13	0.0	-31.7	
Greece	56	56	5	2	63	17	0.0	12.5	
Italy	1,315	1,463	58	21	1,542	603	0.4	17.3	
Portugal	330	346	12	1	359	156	0.1	8.8	
Serbia	37	34	1	1	36	13	0.0	-2.7	
Slovenia	149	63	2	0	65	28	0.0	-56.4	
Spain	2,385	2,765	36	17	2,818	1,298	0.7	18.2	
Turkey	950	449	24	8	481	172	0.1	-49.4	
Other Europe	271	248	121	63	432	164	0.1	59.4	
Americas	19,858	18,720	1,100	437	20,257	8,870	5.2	2.0	
Argentina	308	304	2	1	307	138	0.1	-0.3	
Brazil	627	565	12	8	585	268	0.1	-6.7	
Canada	3,489	3,124	211	33	3,368	1,499	0.9	-3.5	
Chile	274	297	6	2	305	159	0.1	11.3	
Colombia	160	192	4	3	199	107	0.1	24.4	
Costa Rica	28	36	1	0	37	20	0.0	32.1	
Ecuador	20	25	2	0	27	9	0.0	35.0	
Mexico	540	468	4	2	474	226	0.1	-12.2	
Peru	79	74	1	1	76	35	0.0	-3.8	
United States	14,074	13,362	825	367	14,554	6,283	3.7	3.4	
Uruguay	16	20	1	0	21	9	0.0	31.3	
Other Americas	243	253	31	20	304	117	0.1	25.1	
Africa	432	422	51	17	490	171	0.1	13.4	
Cameroon	9	11	0	0	11	1	0.0	22.2	
Congo	8	3	0	0	3	1	0.0	-62.5	
Ghana	5	3	0	2	5	2	0.0	0.0	
Kenya	15	12	1	0	13	3	0.0	-13.3	
Liberia	3	1	0	0	1	0	0.0		
Nigeria	58	36	24	3	63	3	0.0	8.6	
Sudan	13	4	0	1	5	2	0.0	-61.5	
South Africa	293	316	16	4	336	138	0.1	14.7	
Uganda	2	4	0	0	4	3	0.0	100.0	
Other Africa	26	32	10	7	49	18	0.0	88.5	
Middle East	688	982	35	17	1,034	380	0.3	50.3	
Egypt	47	25	4	2	31	10	0.0	-34.0	
Iran	35	96	4	2	102	33	0.0	191.4	
Iraq	6	11	1	0	12	3	0.0	100.0	
Israel	410	735	17	1	753	306	0.2	83.7	
Kuwait	121	53	1	4	58	5	0.0	-52.1	
Oman	8	6	0	0	6	1	0.0	-25.0	
Palestine	4	1	1	0	2	1	0.0	-50.0	
Qatar	3	3	0	0	3	0	0.0	0.0	
Saudi Arabia	6	21	0	0	21	8	0.0	250.0	
United Arab Emirates	7	3	1	0	4	1	0.0	-42.9	
Yemen	19	3	0	0	3	0	0.0	-84.2	
Other Middle East	22	25	6	8	39	12	0.0	77.3	

COMPILED BY:

1. Mr. Kong Sopheareak

Director
Statistics & Tourism Information Department
Fax: +855 23 885003
E-mail: kong@mot.gov.kh

2. Mr. Horth Vanny

Chief of Tourism Statistics Office
Compile and data analysis
Tel.: +855 12 827664