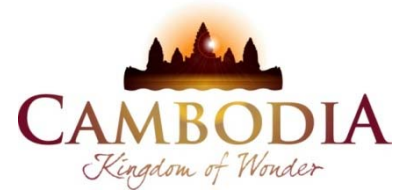




KINGDOM OF CAMBODIA
NATION RELIGION KING



TOURISM STATISTICS REPORT

March 2015

MINISTRY OF TOURISM

Statistics and Tourism Information Department

No. A3, Street 169, Sangkat Veal Vong, Khan 7 Makara, Phnom Penh, Cambodia.

Fax: +855 23 885003

E-mail: kong@mot.gov.kh

Web site: www.mot.gov.kh

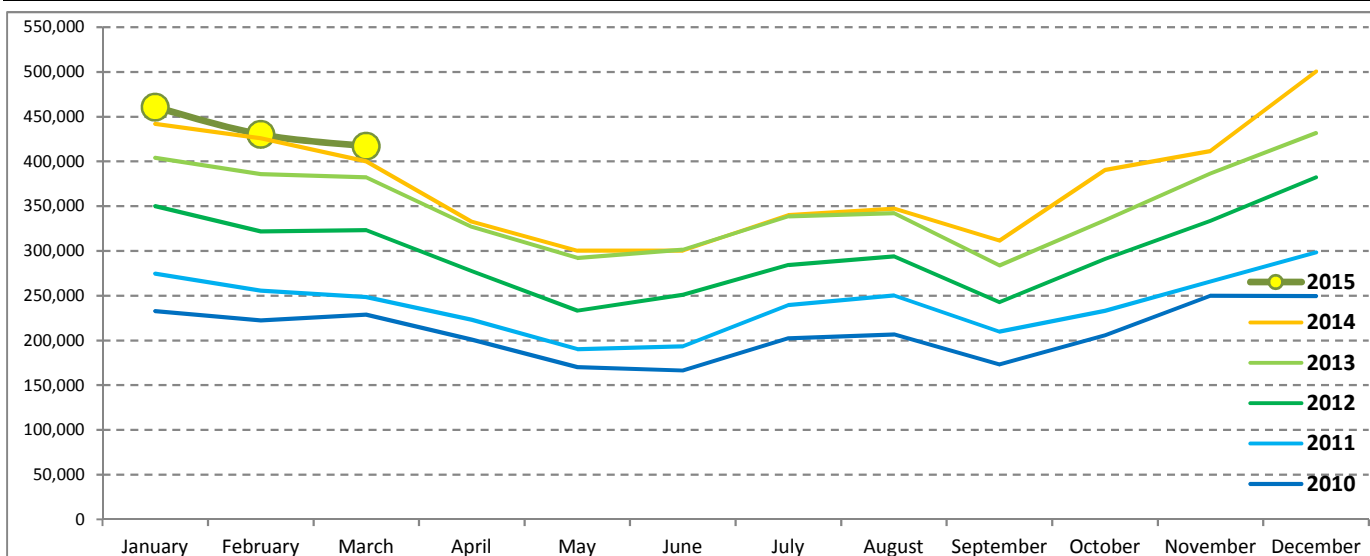
Tourism Highlights

International Tourist Arrivals, Average Length of Stay, Hotels Occupancy & Tourism Receipts 1993 - 2014

Years	Int'l Tourist Arrivals		Average Length	Hotels Occupancy	Tourism Receipts
	Number	Change (%)	of Stay (Days)	(%)	(Million US\$)
1993	118,183	-	N/A	N/A	N/A
1994	176,617	49.4	N/A	N/A	N/A
1995	219,680	24.4	8.00	37.00	100
1996	260,489	18.6	7.50	40.00	118
1997	218,843	-16.0	6.40	30.00	103
1998	286,524	30.9	5.20	40.00	166
1999	367,743	28.3	5.50	44.00	190
2000	466,365	26.8	5.50	45.00	228
2001	604,919	29.7	5.50	48.00	304
2002	786,524	30.0	5.80	50.00	379
2003	701,014	-10.9	5.50	50.00	347
2004	1,055,202	50.5	6.30	52.00	578
2005	1,421,615	34.7	6.30	52.00	832
2006	1,700,041	19.6	6.50	54.79	1,049
2007	2,015,128	18.5	6.50	54.79	1,400
2008	2,125,465	5.5	6.65	62.68	1,595
2009	2,161,577	1.7	6.45	63.57	1,561
2010	2,508,289	16.0	6.45	65.74	1,786
2011	2,881,862	14.9	6.50	66.15	1,912
2012	3,584,307	24.4	6.30	68.49	2,210
2013	4,210,165	17.5	6.75	69.53	2,547
2014	4,502,775	7.0	6.50	67.55	2,736

International Tourist Arrivals to Cambodia

Months	2010	2011	2012	2013	2014	2015	Change (%)				
							11/10	12/11	13/12	14/13	15*/14
Q1	683,692	778,467	995,210	1,172,072	1,267,922	1,307,836	13.9	27.8	17.8	8.2	3.1
January	232,590	274,471	350,257	404,106	442,045	460,577	18.0	27.6	15.4	9.4	4.2
February	222,354	255,499	321,870	385,760	425,801	430,207	14.9	26.0	19.8	10.4	1.0
March	228,748	248,497	323,083	382,206	400,076	417,052	8.6	30.0	18.3	4.7	4.2
Q2	537,464	606,562	761,442	920,527	933,446	0	12.9	25.5	20.9	1.4	
April	200,965	223,032	277,304	327,000	332,690		11.0	24.3	17.9	1.7	
May	170,164	190,258	233,220	292,115	300,302		11.8	22.6	25.3	2.8	
June	166,335	193,272	250,918	301,412	300,454		16.2	29.8	20.1	-0.3	
Q3	582,024	699,760	820,888	964,612	998,690	0	20.2	17.3	17.5	3.5	
July	202,349	239,527	284,282	338,761	340,091		18.4	18.7	19.2	0.4	
August	206,563	250,429	293,859	342,064	347,211		21.2	17.3	16.4	1.5	
September	173,112	209,804	242,747	283,787	311,388		21.2	15.7	16.9	9.7	
Q4	705,109	797,073	1,006,767	1,152,954	1,302,717	0	13.0	26.3	14.5	13.0	
October	205,515	233,190	290,959	334,410	390,637		13.5	24.8	14.9	16.8	
November	249,892	265,539	333,482	386,737	411,501		6.3	25.6	16.0	6.4	
December	249,702	298,344	382,326	431,807	500,579		19.5	28.1	12.9	15.9	
Total	2,508,289	2,881,862	3,584,307	4,210,165	4,502,775	1,307,836	14.9	24.4	17.5	7.0	3.1



Source: Statistics and Tourism Information Department, MOT

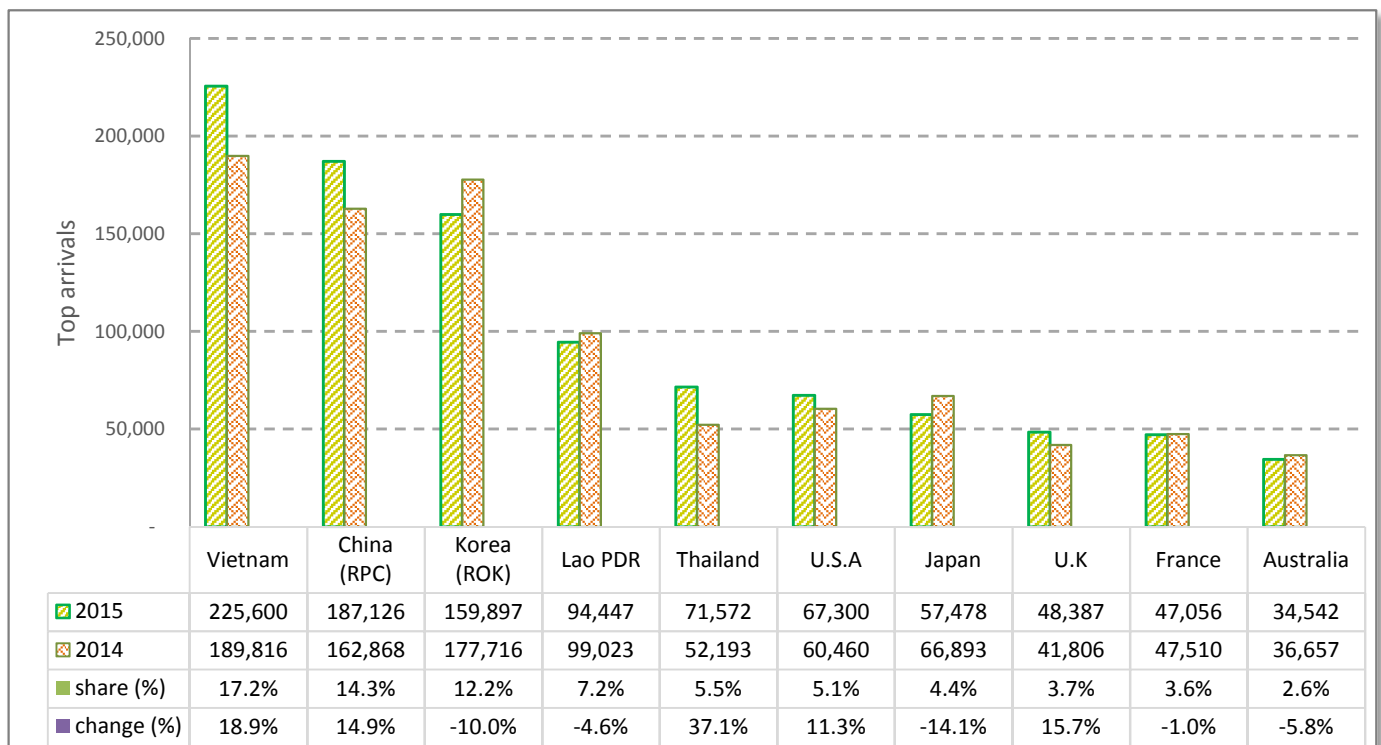
CAMBODIA: TOURISM STATISTICS REPORT IN THE FIRST QUARTER 2015

I. INBOUND TOURISM

1. International tourist arrivals in January - March 2015

	Inbound tourism		share (%)		change (%)
	2014	2015	2014	2015	2015*/14
Air	698,969	733,468	55.1	56.1	4.9
Phnom Penh Int'l Airport (PNH)	245,071	272,560	19.3	20.8	11.2
Siem Reap Int'l Airport (REP)	453,898	460,908	35.8	35.2	1.5
Land and Water ways	568,953	574,368	44.9	43.9	1.0
Land	536,588	528,943	42.3	40.4	-1.4
Waterway	32,365	45,425	2.6	3.5	40.4
Total	1,267,922	1,307,836	100.0	100.0	3.1

2. Top ten markets arrivals in January - March 2015



II. OUTBOUND TOURISM

Outbound tourism in January - March 2015

	Outbound tourism		change (%)
	2014	2015	2015*/14
Cambodian Outbound Tourists	208,972	246,912	18.2
International Tourists Departure	1,270,810	1,267,149	-0.3

III. INTERNAL TOURISM

Foreign visitor arrivals to the regions in January - March 2015

	Arrivals		share (%)		change (%)
	2014	2015	2014	2015	2015*/14
Phnom Penh & Surrounding	489,185	618,842	33.5	40.4	26.5
Siem Reap Angkor	778,737	688,994	53.3	45.0	-11.5
Coastal Areas	172,291	204,835	11.8	13.4	18.9
Eco-tourism Areas	19,669	19,499	1.3	1.3	-0.9
Total	1,459,882	1,532,170	100.0	100.0	5.0

International Tourist Arrivals to Cambodia by Country of Residence in January - March 2015

(by all mean of transportations)

Regions Country of Residence	2014	2015			Total	Female	Share	Change
		Purpose of Visit					(%)	(%)
		Holiday	Business	Other			2015*	2015*/14
Grand Total	1,267,922	1,190,191	65,586	52,059	1,307,836	573,696	100.0	3.1
Asia and the Pacific	910,068	854,646	56,318	44,875	955,839	417,162	73.1	5.0
ASEAN (South-East Asia)	424,236	404,386	20,943	41,267	466,596	202,731	35.7	10.0
Brunei Darussalam	229	148	8	18	174	78	0.0	-24.0
Indonesia	7,954	6,686	3,231	744	10,661	2,726	0.8	34.0
Lao PDR	99,023	89,847	33	4,567	94,447	55,285	7.2	-4.6
Malaysia	32,770	29,990	2,001	116	32,107	10,152	2.5	-2.0
Myanmar	1,178	1,755	112	179	2,046	863	0.2	73.7
Philippines	27,878	14,058	2,261	389	16,708	9,576	1.3	-40.1
Singapore	13,195	12,563	635	83	13,281	4,031	1.0	0.7
Thailand	52,193	63,187	3,734	4,651	71,572	30,075	5.5	37.1
Vietnam	189,816	186,152	8,928	30,520	225,600	89,945	17.2	18.9
North-East Asia	435,115	402,749	32,717	2,090	437,556	192,739	33.5	0.6
China	162,868	165,486	20,717	923	187,126	85,716	14.3	14.9
Hong Kong (China)	1,719	3,721	35	6	3,762	1,759	0.3	118.8
Japan	66,893	51,951	4,982	545	57,478	22,873	4.4	-14.1
Korea (ROK)	177,716	156,116	3,207	574	159,897	70,138	12.2	-10.0
Macau (China)		136	0	0	136	65	0.0	
Mongolia	112	139	3	6	148	84	0.0	32.1
Taiwan (China)	25,807	25,200	3,773	36	29,009	12,104	2.2	12.4
Southern Asia	8,114	8,556	1,046	729	10,331	2,890	0.8	27.3
Afghanistan	98	13	1	4	18	3	0.0	-81.6
Bangladesh	334	379	90	33	502	81	0.0	50.3
Bhutan	23	51	0	5	56	31	0.0	143.5
India	6,632	7,229	673	514	8,416	2,500	0.6	26.9
Nepal	336	439	68	94	601	134	0.0	78.9
Pakistan	288	213	75	42	330	62	0.0	14.6
Srilanka	403	232	139	37	408	79	0.0	1.2
Oceania	41,881	38,351	1,531	565	40,447	18,387	3.1	-3.4
Australia	36,657	32,727	1,324	491	34,542	15,706	2.6	-5.8
Fiji	45	20	12	6	38	14	0.0	-15.6
New Zealand	5,179	5,604	195	68	5,867	2,667	0.4	13.3
Other Asia & the Pacific	722	604	81	224	909	415	0.1	25.9
Europe	261,241	232,972	6,030	4,163	243,165	107,169	18.6	-6.9
Northern Europe	64,808	68,175	1,919	950	71,044	30,108	5.4	9.6
Denmark	5,284	4,808	93	59	4,960	2,200	0.4	-6.1
Finland	3,048	3,006	66	49	3,121	1,218	0.2	2.4
Iceland	280	276	3	7	286	120	0.0	2.1
Ireland	2,708	2,844	100	50	2,994	1,246	0.2	10.6
Norway	3,830	3,923	49	29	4,001	1,847	0.3	4.5
Sweden	7,852	7,110	119	66	7,295	3,038	0.6	-7.1
United Kingdom	41,806	46,208	1,489	690	48,387	20,439	3.7	15.7
Western Europe	104,200	102,570	2,798	1,510	106,878	46,470	8.2	2.6
Austria	3,742	4,066	64	53	4,183	1,713	0.3	11.8
Belgium	4,655	4,726	132	94	4,952	2,044	0.4	6.4
France	47,510	44,731	1,653	672	47,056	21,066	3.6	-1.0
Germany	32,042	33,309	523	438	34,270	14,583	2.6	7.0
Luxembourg	170	219	0	3	222	93	0.0	30.6
Monaco	29	20	0	3	23	13	0.0	-20.7
Netherlands	8,751	7,910	267	173	8,350	3,531	0.6	-4.6
Switzerland	7,301	7,589	159	74	7,822	3,427	0.6	7.1
Central / Eastern Europe	72,828	41,578	661	913	43,152	21,364	3.3	-40.7
Bulgaria	486	607	6	95	708	314	0.1	45.7
Czech Republic	2,428	2,529	17	40	2,586	1,078	0.2	6.5
Estonia	800	917	11	11	939	416	0.1	17.4
Hungary	1,442	1,858	26	70	1,954	847	0.1	35.5
Kazakhstan	1,373	1,079	45	6	1,130	629	0.1	-17.7
Kyrgyzstan		59	4	2	65	34	0.0	
Latvia		313	5	18	336	147	0.0	
Lithuania	775	780	3	31	814	413	0.1	5.0
Poland	5,349	5,749	29	151	5,929	2,945	0.5	10.8
Romania	670	874	22	128	1,024	493	0.1	52.8
Russian Federation	55,486	23,546	392	128	24,066	12,378	1.8	-56.6
Slovakia	979	929	16	30	975	399	0.1	-0.4
Ukraine	2,870	2,176	73	200	2,449	1,158	0.2	-14.7
Uzbekistan	170	162	12	3	177	113	0.0	4.1

Source: Statistics and Tourism Information Department, MOT

International Tourist Arrivals to Cambodia by Country of Residence in January - March 2015

(by all mean of transportations)

Regions Country of Residence	2014	2015			Total	Female	Share	Change
		Purpose of Visit					(%)	(%)
		Holiday	Business	Other			2015*	2015*/14
Grand Total	1,267,922	1,190,191	65,586	52,059	1,307,836	573,696	100.0	3.1
Southern Europe	18,818	20,119	577	605	21,301	8,872	1.6	13.2
Croatia	344	429	11	116	556	220	0.0	61.6
Greece	482	556	22	20	598	234	0.0	24.1
Italy	9,869	9,598	198	107	9,903	4,087	0.8	0.3
Malta		139	1	7	147	52	0.0	
Portugal	958	1,317	46	69	1,432	662	0.1	49.5
Serbia	256	317	5	81	403	168	0.0	57.4
Slovenia	459	450	9	19	478	212	0.0	4.1
Spain	4,888	5,504	133	91	5,728	2,564	0.4	17.2
Turkey	1,562	1,809	152	95	2,056	673	0.2	31.6
Other Europe	587	530	75	185	790	355	0.1	34.6
Americas	90,771	96,256	2,849	2,656	101,761	46,643	7.8	12.1
North America	80,839	85,046	2,692	2,243	89,981	40,861	6.9	11.3
Canada	19,322	20,386	606	235	21,227	9,611	1.6	9.9
Mexico	1,057	1,418	13	23	1,454	758	0.1	37.6
United States	60,460	63,242	2,073	1,985	67,300	30,492	5.1	11.3
Central America	92	158	4	58	220	106	0.0	
Costa Rica	92	140	2	11	153	85	0.0	66.3
Honduras		8	1	31	40	13	0.0	
Jamaica		10	1	16	27	8	0.0	
South America	9,432	10,700	94	171	10,965	5,434	0.8	16.3
Argentina	2,938	3,347	16	16	3,379	1,681	0.3	15.0
Brazil	3,480	4,065	33	69	4,167	2,000	0.3	19.7
Chile	2,136	1,903	12	25	1,940	1,000	0.1	-9.2
Colombia	493	720	9	14	743	374	0.1	50.7
Ecuador	88	192	8	6	206	110	0.0	134.1
Peru	196	216	6	21	243	130	0.0	24.0
Uruguay	101	180	5	9	194	96	0.0	92.1
Venezuela		77	5	11	93	43	0.0	
Other Americas	408	352	59	184	595	242	0.0	45.8
Africa	1,416	1,728	277	276	2,281	914	0.2	61.1
North Africa	21	193	10	26	229	91	0.0	
Morocco		124	6	8	138	55	0.0	
Sudan	21	21	1	13	35	15	0.0	66.7
Tunisia		48	3	5	56	21	0.0	
Subsaharan Africa	1,297	1,460	248	213	1,921	777	0.1	48.1
Cameroon	34	47	3	5	55	10	0.0	61.8
Congo	12	10	0	7	17	2	0.0	41.7
Ghana	50	16	3	3	22	3	0.0	-56.0
Kenya	60	85	4	5	94	49	0.0	56.7
Liberia	10	5	0	2	7	0	0.0	-30.0
Nigeria	128	116	140	14	270	24	0.0	110.9
South Africa	991	1,139	94	168	1,401	667	0.1	41.4
Tanzania		13	0	3	16	5	0.0	
Uganda	12	10	1	1	12	5	0.0	0.0
Zimbabwe		19	3	5	27	12	0.0	
Other Africa	98	75	19	37	131	46	0.0	33.7
Middle East	4,426	4,589	112	89	4,790	1,808	0.4	8.2
Egypt	74	143	9	5	157	38	0.0	112.2
Iran	179	173	13	2	188	56	0.0	5.0
Iraq	16	20	1	3	24	3	0.0	50.0
Israel	3,666	3,599	69	10	3,678	1,584	0.3	0.3
Jordan		86	4	2	92	25	0.0	
Kuwait	245	222	0	17	239	16	0.0	-2.4
Oman	51	73	0	5	78	14	0.0	52.9
Palestine	20	6	3	3	12	1	0.0	-40.0
Qatar	10	46	0	11	57	22	0.0	470.0
Saudi Arabia	37	77	4	8	89	10	0.0	140.5
Syria		34	1	1	36	8	0.0	
United Arab Emirates	15	21	0	1	22	0	0.0	46.7
Yemen	47	30	0	2	32	6	0.0	-31.9
Other Middle East	66	59	8	19	86	25	0.0	30.3

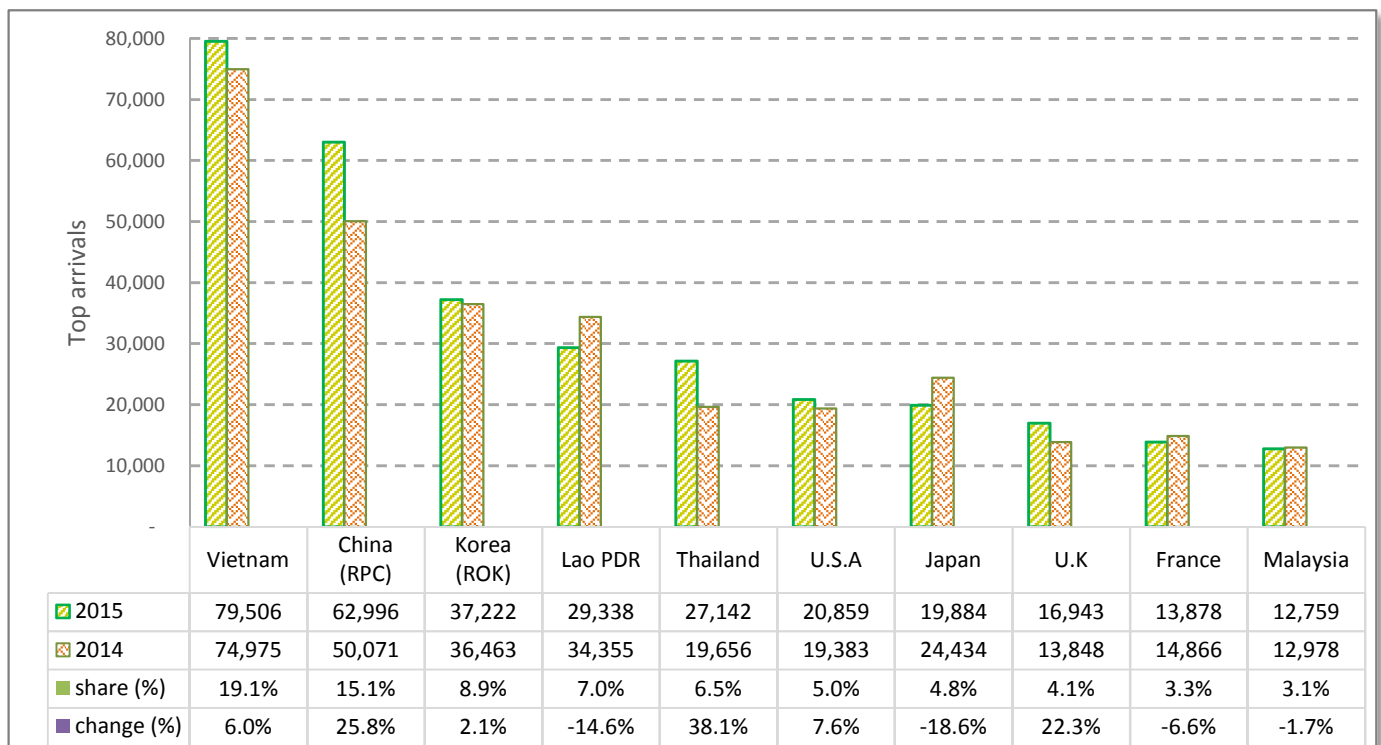
CAMBODIA: TOURISM STATISTICS REPORT IN MARCH 2015

I. INBOUND TOURISM

1. International tourist arrivals in March 2015

	Inbound tourism		share (%)		change (%)
	2014	2015	2014	2015	2015*/14
Air	204,433	229,357	51.1	55.0	12.2
Phnom Penh Int'l Airport (PNH)	77,468	94,424	19.4	22.6	21.9
Siem Reap Int'l Airport (REP)	126,965	134,933	31.7	32.4	6.3
Land and Water ways	195,643	187,695	48.9	45.0	-4.1
Land	183,365	172,126	45.8	41.3	-6.1
Waterway	12,278	15,569	3.1	3.7	26.8
Total	400,076	417,052	100.0	100.0	4.2

2. Top ten markets arrivals in March 2015



II. OUTBOUND TOURISM

Outbound tourism in March 2015

	Outbound tourism		change (%)
	2014	2015	2015*/14
Cambodian Outbound Tourists	72,430	87,447	20.7
International Tourists Departure	406,828	400,925	-1.5

III. INTERNAL TOURISM

Foreign visitor arrivals to the regions in March 2015

	Arrivals		share (%)		change (%)
	2014	2015	2014	2015	2015*/14
Phnom Penh & Surrounding	169,896	211,278	37.1	43.3	24.4
Siem Reap Angkor	230,180	205,774	50.3	42.2	-10.6
Coastal Areas	52,256	64,195	11.4	13.2	22.8
Eco-tourism Areas	5,682	6,439	1.2	1.3	13.3
Total	458,014	487,686	100.0	100.0	6.5

International Tourist Arrivals to Cambodia by Country of Residence in March 2015

(by all mean of transportations)

Regions Country of Residence	2014	2015			Total	Female	Share	Change
		Purpose of Visit					(%)	(%)
		Holiday	Business	Other			2015*	2015*/14
Grand Total	400,076	374,692	26,696	15,664	417,052	182,663	100.0	4.2
Asia and the Pacific	293,410	273,571	23,556	13,151	310,278	134,735	74.4	5.7
ASEAN (South-East Asia)	159,827	144,680	7,791	12,134	164,605	73,230	39.5	3.0
Brunei Darussalam	97	58	2	6	66	39	0.0	-32.0
Indonesia	2,618	2,210	1,210	56	3,476	904	0.8	32.8
Lao PDR	34,355	29,240	6	92	29,338	18,800	7.0	-14.6
Malaysia	12,978	12,046	687	26	12,759	4,053	3.1	-1.7
Myanmar	464	813	35	26	874	414	0.2	88.4
Philippines	9,297	5,092	644	70	5,806	3,463	1.4	-37.5
Singapore	5,387	5,426	197	15	5,638	1,791	1.4	4.7
Thailand	19,656	23,762	1,420	1,960	27,142	11,811	6.5	38.1
Vietnam	74,975	66,033	3,590	9,883	79,506	31,955	19.1	6.0
North-East Asia	119,272	115,758	14,840	689	131,287	55,717	31.5	10.1
China	50,071	52,167	10,509	320	62,996	27,773	15.1	25.8
Hong Kong (China)	464	1,130	13	1	1,144	515	0.3	146.6
Japan	24,434	17,985	1,715	184	19,884	7,896	4.8	-18.6
Korea (ROK)	36,463	35,886	1,178	158	37,222	15,547	8.9	2.1
Macau (China)		47	0	0	47	23	0.0	
Mongolia	31	38	1	5	44	22	0.0	41.9
Taiwan (China)	7,809	8,505	1,424	21	9,950	3,941	2.4	27.4
Southern Asia	2,686	3,118	357	103	3,578	1,011	0.9	33.2
Afghanistan	49	7	1	0	8	1	0.0	-83.7
Bangladesh	88	187	26	1	214	24	0.1	143.2
Bhutan	4	36	0	1	37	19	0.0	825.0
India	2,211	2,564	221	35	2,820	873	0.7	27.5
Nepal	113	145	32	52	229	41	0.1	102.7
Pakistan	90	85	26	8	119	18	0.0	32.2
Sri Lanka	131	94	51	6	151	35	0.0	15.3
Oceania	11,324	9,769	531	172	10,472	4,580	2.5	-7.5
Australia	9,881	8,123	451	145	8,719	3,815	2.1	-11.8
Fiji	20	5	3	4	12	4	0.0	-40.0
New Zealand	1,423	1,641	77	23	1,741	761	0.4	22.3
Other Asia & the Pacific	301	246	37	53	336	197	0.1	11.6
Europe	76,790	70,172	1,994	1,430	73,596	32,973	17.6	-4.2
Northern Europe	19,879	22,562	638	372	23,572	10,314	5.7	18.6
Denmark	1,299	1,423	33	22	1,478	681	0.4	13.8
Finland	754	755	18	16	789	282	0.2	4.6
Iceland	153	105	0	4	109	49	0.0	-28.8
Ireland	758	948	37	17	1,002	425	0.2	32.2
Norway	1,105	1,279	14	9	1,302	604	0.3	17.8
Sweden	1,962	1,898	33	18	1,949	840	0.5	-0.7
United Kingdom	13,848	16,154	503	286	16,943	7,433	4.1	22.3
Western Europe	31,865	30,921	900	417	32,238	14,259	7.7	1.2
Austria	1,009	955	25	4	984	414	0.2	-2.5
Belgium	1,316	1,294	47	31	1,372	562	0.3	4.3
France	14,866	13,182	507	189	13,878	6,215	3.3	-6.6
Germany	10,581	11,354	182	109	11,645	5,198	2.8	10.1
Luxembourg	46	78	0	1	79	37	0.0	71.7
Monaco	8	3	0	0	3	2	0.0	-62.5
Netherlands	2,365	2,090	85	59	2,234	937	0.5	-5.5
Switzerland	1,674	1,965	54	24	2,043	894	0.5	22.0
Central / Eastern Europe	19,238	10,494	234	352	11,080	5,517	2.7	-42.4
Bulgaria	175	196	2	30	228	113	0.1	30.3
Czech Republic	655	855	9	9	873	373	0.2	33.3
Estonia	178	228	3	2	233	102	0.1	30.9
Hungary	330	453	8	24	485	218	0.1	47.0
Kazakhstan	277	267	14	0	281	159	0.1	1.4
Kyrgyzstan		17	0	1	18	10	0.0	
Latvia		74	3	12	89	36	0.0	
Lithuania	267	235	1	6	242	122	0.1	-9.4
Poland	1,430	1,446	13	57	1,516	700	0.4	6.0
Romania	196	340	13	46	399	199	0.1	103.6
Russian Federation	14,809	5,570	126	73	5,769	3,069	1.4	-61.0
Slovakia	298	336	7	2	345	144	0.1	15.8
Ukraine	584	430	33	89	552	235	0.1	-5.5
Uzbekistan	39	47	2	1	50	37	0.0	28.2

Source: Statistics and Tourism Information Department, MOT

International Tourist Arrivals to Cambodia by Country of Residence in March 2015

(by all mean of transportations)

Regions Country of Residence	2014	2015			Total	Female	Share	Change
		Purpose of Visit					(%)	(%)
		Holiday	Business	Other			2015*	2015*/14
Grand Total	400,076	374,692	26,696	15,664	417,052	182,663	100.0	4.2
Southern Europe	5,536	5,967	177	192	6,336	2,705	1.5	14.5
Croatia	89	136	5	41	182	66	0.0	104.5
Greece	76	120	9	7	136	50	0.0	78.9
Italy	2,999	2,672	76	36	2,784	1,178	0.7	-7.2
Malta		43	0	1	44	16	0.0	
Portugal	281	532	16	20	568	264	0.1	102.1
Serbia	49	60	2	26	88	35	0.0	79.6
Slovenia	128	102	0	6	108	54	0.0	-15.6
Spain	1,471	1,922	41	23	1,986	913	0.5	35.0
Turkey	443	380	28	32	440	129	0.1	-0.7
Other Europe	272	228	45	97	370	178	0.1	36.0
Americas	28,317	29,152	1,006	989	31,147	14,213	7.5	10.0
North America	25,486	26,099	952	839	27,890	12,658	6.7	9.4
Canada	5,732	6,165	227	75	6,467	2,967	1.6	12.8
Mexico	371	555	2	7	564	280	0.1	52.0
United States	19,383	19,379	723	757	20,859	9,411	5.0	7.6
Central America	23	22	1	28	51	18	0.0	
Costa Rica	23	18	1	3	22	13	0.0	-4.3
Honduras		1	0	21	22	2	0.0	
Jamaica		3	0	4	7	3	0.0	
South America	2,610	2,864	29	37	2,930	1,425	0.7	12.3
Argentina	849	1,214	7	4	1,225	606	0.3	44.3
Brazil	1,050	870	10	17	897	428	0.2	-14.6
Chile	488	404	7	5	416	191	0.1	-14.8
Colombia	119	192	2	4	198	97	0.0	66.4
Ecuador	17	45	0	2	47	31	0.0	176.5
Peru	49	54	0	0	54	27	0.0	10.2
Uruguay	38	59	1	4	64	30	0.0	68.4
Venezuela		26	2	1	29	15	0.0	
Other Americas	198	167	24	85	276	112	0.1	39.4
Africa	403	571	97	76	744	273	0.2	84.6
North Africa	6	42	3	7	52	20	0.0	
Morocco		32	2	3	37	15	0.0	
Sudan	6	1	0	2	3	0	0.0	
Tunisia		9	1	2	12	5	0.0	
Subsaharan Africa	369	504	88	56	648	235	0.2	75.6
Cameroon	9	21	2	2	25	5	0.0	177.8
Congo	5	5	0	3	8	1	0.0	60.0
Ghana	1	7	1	0	8	1	0.0	700.0
Kenya	21	53	0	3	56	27	0.0	166.7
Liberia	1	2	0	0	2	0	0.0	100.0
Nigeria	44	33	48	4	85	6	0.0	93.2
South Africa	282	370	35	40	445	191	0.1	57.8
Tanzania		7	0	1	8	1	0.0	
Uganda	6	3	0	1	4	1	0.0	-33.3
Zimbabwe		3	2	2	7	2	0.0	
Other Africa	28	25	6	13	44	18	0.0	57.1
Middle East	1,156	1,226	43	18	1,287	469	0.3	11.3
Egypt	22	20	5	3	28	4	0.0	27.3
Iran	74	81	5	1	87	33	0.0	17.6
Iraq	8	9	0	1	10	2	0.0	25.0
Israel	911	949	26	1	976	398	0.2	7.1
Jordan		39	2	1	42	11	0.0	
Kuwait	56	37	0	1	38	3	0.0	-32.1
Oman	13	25	0	0	25	2	0.0	92.3
Palestine	9	3	1	1	5	1	0.0	-44.4
Qatar	2	13	0	0	13	3	0.0	550.0
Saudi Arabia	14	16	0	1	17	1	0.0	21.4
Syria		7	1	0	8	2	0.0	
United Arab Emirates	6	9	0	0	9	0	0.0	50.0
Yemen	22	2	0	0	2	0	0.0	-90.9
Other Middle East	19	16	3	8	27	9	0.0	42.1