



KINGDOM OF CAMBODIA
NATION RELIGION KING



TOURISM STATISTICS REPORT

June 2015

MINISTRY OF TOURISM

Statistics and Tourism Information Department

No. A3, Street 169, Sangkat Veal Vong, Khan 7 Makara, Phnom Penh, Cambodia.

Fax: +855 23 885003

E-mail: kong@mot.gov.kh

Web site: www.mot.gov.kh

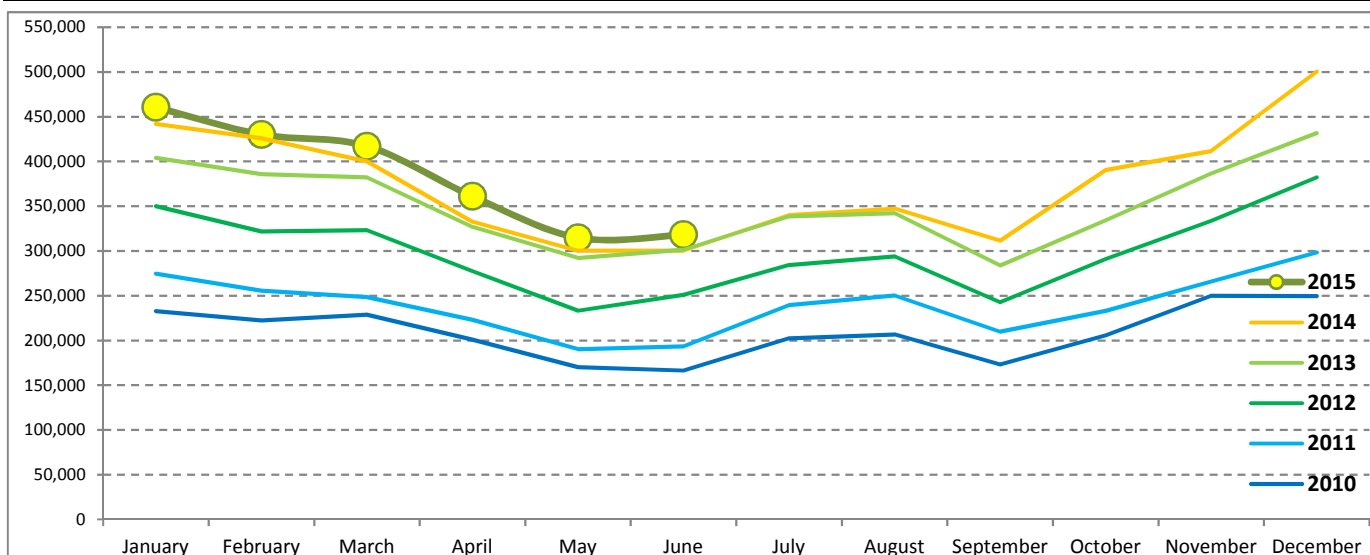
Tourism Highlights

International Tourist Arrivals, Average Length of Stay, Hotels Occupancy & Tourism Receipts 1993 - 2014

Years	Int'l Tourist Arrivals		Average Length	Hotels Occupancy	Tourism Receipts
	Number	Change (%)	of Stay (Days)	(%)	(Million US\$)
1993	118,183	-	N/A	N/A	N/A
1994	176,617	49.4	N/A	N/A	N/A
1995	219,680	24.4	8.00	37.00	100
1996	260,489	18.6	7.50	40.00	118
1997	218,843	-16.0	6.40	30.00	103
1998	286,524	30.9	5.20	40.00	166
1999	367,743	28.3	5.50	44.00	190
2000	466,365	26.8	5.50	45.00	228
2001	604,919	29.7	5.50	48.00	304
2002	786,524	30.0	5.80	50.00	379
2003	701,014	-10.9	5.50	50.00	347
2004	1,055,202	50.5	6.30	52.00	578
2005	1,421,615	34.7	6.30	52.00	832
2006	1,700,041	19.6	6.50	54.79	1,049
2007	2,015,128	18.5	6.50	54.79	1,400
2008	2,125,465	5.5	6.65	62.68	1,595
2009	2,161,577	1.7	6.45	63.57	1,561
2010	2,508,289	16.0	6.45	65.74	1,786
2011	2,881,862	14.9	6.50	66.15	1,912
2012	3,584,307	24.4	6.30	68.49	2,210
2013	4,210,165	17.5	6.75	69.53	2,547
2014	4,502,775	7.0	6.50	67.55	2,736

International Tourist Arrivals to Cambodia

Months	2010	2011	2012	2013	2014	2015	Change (%)				
							11/10	12/11	13/12	14/13	15*/14
Q1	683,692	778,467	995,210	1,172,072	1,267,922	1,307,836	13.9	27.8	17.8	8.2	3.1
January	232,590	274,471	350,257	404,106	442,045	460,577	18.0	27.6	15.4	9.4	4.2
February	222,354	255,499	321,870	385,760	425,801	430,207	14.9	26.0	19.8	10.4	1.0
March	228,748	248,497	323,083	382,206	400,076	417,052	8.6	30.0	18.3	4.7	4.2
Q2	537,464	606,562	761,442	920,527	933,446	994,154	12.9	25.5	20.9	1.4	6.5
April	200,965	223,032	277,304	327,000	332,690	361,139	11.0	24.3	17.9	1.7	8.6
May	170,164	190,258	233,220	292,115	300,302	314,748	11.8	22.6	25.3	2.8	4.8
June	166,335	193,272	250,918	301,412	300,454	318,267	16.2	29.8	20.1	-0.3	5.9
Q3	582,024	699,760	820,888	964,612	998,690	0	20.2	17.3	17.5	3.5	
July	202,349	239,527	284,282	338,761	340,091		18.4	18.7	19.2	0.4	
August	206,563	250,429	293,859	342,064	347,211		21.2	17.3	16.4	1.5	
September	173,112	209,804	242,747	283,787	311,388		21.2	15.7	16.9	9.7	
Q4	705,109	797,073	1,006,767	1,152,954	1,302,717	0	13.0	26.3	14.5	13.0	
October	205,515	233,190	290,959	334,410	390,637		13.5	24.8	14.9	16.8	
November	249,892	265,539	333,482	386,737	411,501		6.3	25.6	16.0	6.4	
December	249,702	298,344	382,326	431,807	500,579		19.5	28.1	12.9	15.9	
Total	2,508,289	2,881,862	3,584,307	4,210,165	4,502,775	2,301,990	14.9	24.4	17.5	7.0	4.6



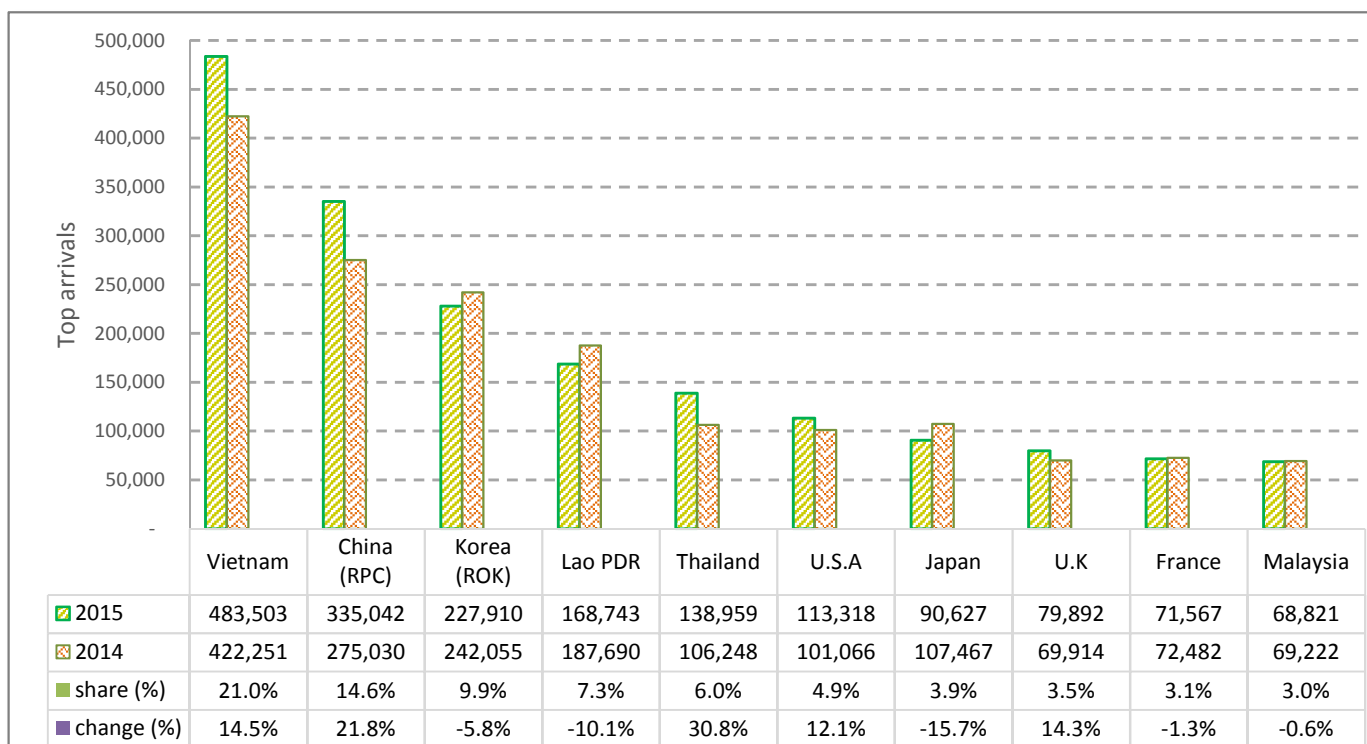
CAMBODIA: TOURISM STATISTICS REPORT IN THE FIRST SEMESTER 2015

I. INBOUND TOURISM

1. International tourist arrivals in January - June 2015

	Inbound tourism		share (%)		change (%)
	2014	2015	2014	2015	2015*/14
Air	1,137,184	1,230,897	51.7	53.5	8.2
Phnom Penh Int'l Airport (PNH)	445,253	511,626	20.2	22.2	14.9
Siem Reap Int'l Airport (REP)	691,931	719,271	31.4	31.2	4.0
Land and Water ways	1,064,184	1,071,093	48.3	46.5	0.6
Land	1,018,946	999,044	46.3	43.4	-2.0
Waterway	45,238	72,049	2.1	3.1	59.3
Total	2,201,368	2,301,990	100.0	100.0	4.6

2. Top ten markets arrivals in January - June 2015



II. OUTBOUND TOURISM

Outbound tourism in January - June 2015

	Outbound tourism		change (%)
	2014	2015	2015*/14
Cambodian Outbound Tourists	454,786	553,014	21.6
International Tourists Departure	2,197,357	2,229,185	1.4

III. INTERNAL TOURISM

Foreign visitor arrivals to the regions in January - June 2015

	Arrivals		share (%)		change (%)
	2014	2015	2014	2015	2015*/14
Phnom Penh & Surrounding	961,824	1,196,308	37.9	44.1	24.4
Siem Reap Angkor	1,239,544	1,105,682	48.8	40.8	-10.8
Coastal Areas	303,545	373,321	12.0	13.8	23.0
Eco-tourism Areas	34,090	35,283	1.3	1.3	3.5
Total	2,539,003	2,710,594	100.0	100.0	6.8

International Tourist Arrivals to Cambodia by Country of Residence in January - June 2015

(by all mean of transportations)

Regions Country of Residence	2014	2015			Total	Female	Share	Change
		Purpose of Visit					(%)	(%)
		Holiday	Business	Other			2015*	2015*/14
Grand Total	2,201,368	2,080,056	142,292	79,642	2,301,990	1,014,213	100.0	4.6
Asia and the Pacific	1,660,679	1,574,740	120,823	68,632	1,764,195	777,085	76.6	6.2
ASEAN (Southeast Asia)	892,781	847,475	44,943	62,118	954,536	427,594	41.5	6.9
Brunei Darussalam	491	319	15	52	386	175	0.0	-21.4
Indonesia	17,066	12,813	6,230	839	19,882	5,290	0.9	16.5
Lao PDR	187,690	163,769	77	4,897	168,743	98,293	7.3	-10.1
Malaysia	69,222	64,273	4,356	192	68,821	22,071	3.0	-0.6
Myanmar	3,053	4,068	268	304	4,640	2,046	0.2	52.0
Philippines	56,456	33,968	5,140	587	39,695	22,418	1.7	-29.7
Singapore	30,304	28,419	1,328	160	29,907	9,475	1.3	-1.3
Thailand	106,248	124,036	8,142	6,781	138,959	56,727	6.0	30.8
Vietnam	422,251	415,810	19,387	48,306	483,503	211,099	21.0	14.5
Northeast Asia	677,320	641,665	69,960	4,029	715,654	310,787	31.1	5.7
China	275,030	289,816	43,632	1,594	335,042	151,989	14.6	21.8
Hong Kong (China)	3,661	6,033	77	18	6,128	2,892	0.3	67.4
Japan	107,467	78,959	10,472	1,196	90,627	35,005	3.9	-15.7
Korea (ROK)	242,055	219,053	7,729	1,128	227,910	98,172	9.9	-5.8
Macau (China)		228	3	6	237	98	0.0	
Mongolia	187	219	11	12	242	133	0.0	29.4
Taiwan (China)	48,920	47,357	8,036	75	55,468	22,498	2.4	13.4
Southern Asia	16,056	16,312	2,258	1,011	19,581	5,486	0.9	22.0
Afghanistan	173	38	4	12	54	11	0.0	-68.8
Bangladesh	745	715	182	96	993	152	0.0	33.3
Bhutan	57	73	3	12	88	49	0.0	54.4
India	12,833	13,776	1,443	620	15,839	4,719	0.7	23.4
Nepal	800	785	143	140	1,068	252	0.0	33.5
Pakistan	594	428	186	69	683	119	0.0	15.0
Sri Lanka	854	497	297	62	856	184	0.0	0.2
Oceania	72,926	67,858	3,336	1,062	72,256	32,338	3.1	-0.9
Australia	63,222	57,852	2,846	937	61,635	27,617	2.7	-2.5
Fiji	78	41	21	10	72	22	0.0	-7.7
New Zealand	9,626	9,965	469	115	10,549	4,699	0.5	9.6
Other Asia & the Pacific	1,596	1,430	326	412	2,168	880	0.1	35.8
Europe	382,146	338,370	14,635	5,996	359,001	156,104	15.6	-6.1
Northern Europe	102,291	104,061	6,127	1,393	111,581	46,252	4.8	9.1
Denmark	7,304	6,489	178	92	6,759	2,920	0.3	-7.5
Finland	4,047	3,887	146	75	4,108	1,603	0.2	1.5
Iceland	389	383	6	13	402	164	0.0	3.3
Ireland	4,867	5,056	197	72	5,325	2,253	0.2	9.4
Norway	5,599	5,317	106	46	5,469	2,451	0.2	-2.3
Sweden	10,171	9,264	240	122	9,626	3,934	0.4	-5.4
United Kingdom	69,914	73,665	5,254	973	79,892	32,927	3.5	14.3
Western Europe	153,891	147,971	5,862	2,509	156,342	67,245	6.8	1.6
Austria	4,927	5,081	123	66	5,270	2,153	0.2	7.0
Belgium	7,500	7,249	286	181	7,716	3,116	0.3	2.9
France	72,482	66,904	3,439	1,224	71,567	31,555	3.1	-1.3
Germany	45,117	45,332	1,038	633	47,003	19,873	2.0	4.2
Luxembourg	258	336	3	9	348	150	0.0	34.9
Monaco	34	31	3	6	40	17	0.0	17.6
Netherlands	13,111	12,206	617	275	13,098	5,526	0.6	-0.1
Switzerland	10,462	10,832	353	115	11,300	4,855	0.5	8.0
Central / Eastern Europe	94,753	54,423	1,316	1,072	56,811	28,334	2.5	-40.0
Bulgaria	683	832	16	101	949	425	0.0	38.9
Czech Republic	3,104	3,202	40	56	3,298	1,364	0.1	6.3
Estonia	958	1,076	21	15	1,112	476	0.0	16.1
Hungary	1,894	2,327	60	76	2,463	1,081	0.1	30.0
Kazakhstan	1,758	1,333	115	19	1,467	787	0.1	-16.6
Kyrgyzstan		74	9	6	89	41	0.0	
Latvia		436	14	28	478	219	0.0	
Lithuania	966	970	12	38	1,020	507	0.0	5.6
Poland	6,699	7,032	59	169	7,260	3,595	0.3	8.4
Romania	1,028	1,149	43	137	1,329	638	0.1	29.3
Russian Federation	72,353	31,457	756	165	32,378	16,796	1.4	-55.2
Slovakia	1,413	1,308	27	41	1,376	586	0.1	-2.6
Ukraine	3,617	2,881	113	209	3,203	1,562	0.1	-11.4
Uzbekistan	280	346	31	12	389	257	0.0	38.9

Source: Statistics and Tourism Information Department, MOT

International Tourist Arrivals to Cambodia by Country of Residence in January - June 2015

(by all mean of transportations)

Regions Country of Residence	2014	2015			Total	Female	Share	Change
		Purpose of Visit					(%)	(%)
		Holiday	Business	Other			2015*	2015*/14
Grand Total	2,201,368	2,080,056	142,292	79,642	2,301,990	1,014,213	100.0	4.6
Southern Europe	29,841	30,640	1,104	739	32,483	13,489	1.4	8.9
Croatia	426	538	17	120	675	264	0.0	58.5
Greece	641	764	36	26	826	316	0.0	28.9
Italy	14,077	13,034	429	146	13,609	5,487	0.6	-3.3
Malta		218	4	12	234	82	0.0	
Portugal	1,763	2,255	90	73	2,418	1,091	0.1	37.2
Serbia	343	392	10	85	487	214	0.0	42.0
Slovenia	573	571	14	27	612	264	0.0	6.8
Spain	9,550	10,056	259	122	10,437	4,690	0.5	9.3
Turkey	2,468	2,812	245	128	3,185	1,081	0.1	29.1
Other Europe	1,370	1,275	226	283	1,784	784	0.1	30.2
Americas	149,203	157,066	5,969	4,399	167,434	76,884	7.3	12.2
North America	133,275	139,386	5,556	3,780	148,722	67,810	6.5	11.6
Canada	29,764	30,731	1,204	347	32,282	14,737	1.4	8.5
Mexico	2,445	3,061	29	32	3,122	1,553	0.1	27.7
United States	101,066	105,594	4,323	3,401	113,318	51,520	4.9	12.1
Central America	184	256	17	71	344	158	0.0	
Costa Rica	184	211	7	17	235	117	0.0	27.7
Honduras		21	6	34	61	26	0.0	
Jamaica		24	4	20	48	15	0.0	
South America	14,872	16,594	205	237	17,036	8,380	0.7	14.6
Argentina	4,060	4,817	25	23	4,865	2,361	0.2	19.8
Brazil	5,395	5,836	77	83	5,996	2,895	0.3	11.1
Chile	3,276	2,938	19	33	2,990	1,506	0.1	-8.7
Colombia	999	1,428	39	20	1,487	770	0.1	48.8
Ecuador	166	296	15	11	322	166	0.0	94.0
Peru	387	395	11	26	432	223	0.0	11.6
Uruguay	589	718	9	18	745	363	0.0	26.5
Venezuela		166	10	23	199	96	0.0	
Other Americas	872	830	191	311	1,332	536	0.1	52.8
Africa	2,758	3,222	584	422	4,228	1,632	0.2	53.3
North Africa	39	331	31	44	406	163	0.0	
Morocco		206	20	13	239	102	0.0	
Sudan	39	47	4	22	73	26	0.0	87.2
Tunisia		78	7	9	94	35	0.0	
Subsaharan Africa	2,515	2,716	506	303	3,525	1,363	0.2	40.2
Cameroon	71	76	7	18	101	16	0.0	42.3
Congo	24	20	2	17	39	10	0.0	62.5
Ghana	63	30	5	6	41	8	0.0	-34.9
Kenya	116	141	9	9	159	77	0.0	37.1
Liberia	13	16	2	5	23	5	0.0	76.9
Nigeria	288	229	287	27	543	69	0.0	88.5
South Africa	1,911	2,102	179	195	2,476	1,131	0.1	29.6
Tanzania		25	3	10	38	9	0.0	
Uganda	29	35	5	5	45	11	0.0	55.2
Zimbabwe		42	7	11	60	27	0.0	
Other Africa	204	175	47	75	297	106	0.0	45.6
Middle East	6,582	6,658	281	193	7,132	2,508	0.3	8.4
Egypt	152	245	37	11	293	73	0.0	92.8
Iran	287	223	18	6	247	72	0.0	-13.9
Iraq	42	47	4	8	59	8	0.0	40.5
Israel	5,096	4,869	141	18	5,028	2,121	0.2	-1.3
Jordan		160	17	8	185	39	0.0	
Kuwait	500	413	3	31	447	25	0.0	-10.6
Oman	82	105	3	11	119	18	0.0	45.1
Palestine	39	22	5	7	34	6	0.0	-12.8
Qatar	17	57	3	14	74	25	0.0	335.3
Saudi Arabia	89	152	7	17	176	13	0.0	97.8
Syria		92	7	6	105	22	0.0	
United Arab Emirates	37	42	3	7	52	6	0.0	40.5
Yemen	101	87	5	9	101	18	0.0	0.0
Other Middle East	140	144	28	40	212	62	0.0	51.4

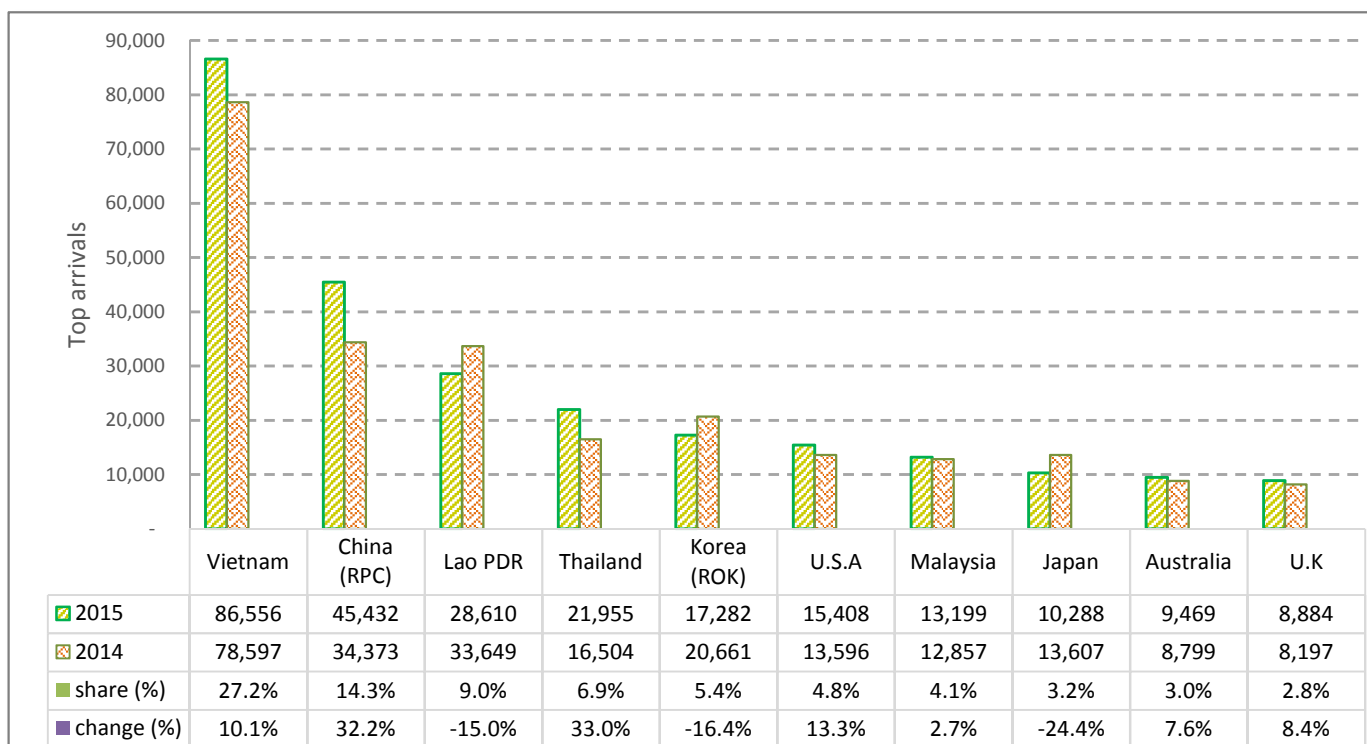
CAMBODIA: TOURISM STATISTICS REPORT IN JUNE 2015

I. INBOUND TOURISM

1. International tourist arrivals in June 2015

	Inbound tourism		share (%)		change (%)
	2014	2015	2014	2015	2015*/14
Air	139,463	154,952	46.4	48.7	11.1
Phnom Penh Int'l Airport (PNH)	68,530	80,095	22.8	25.2	16.9
Siem Reap Int'l Airport (REP)	70,933	74,857	23.6	23.5	5.5
Land and Water ways	160,991	163,315	53.6	51.3	1.4
Land	156,480	155,035	52.1	48.7	-0.9
Waterway	4,511	8,280	1.5	2.6	83.6
Total	300,454	318,267	100.0	100.0	5.9

2. Top ten markets arrivals in June 2015



II. OUTBOUND TOURISM

Outbound tourism in June 2015

	Outbound tourism		change (%)
	2014	2015	2015*/14
Cambodian Outbound Tourists	70,654	91,433	29.4
International Tourists Departure	287,128	292,957	2.0

III. INTERNAL TOURISM

Foreign visitor arrivals to the regions in June 2015

	Arrivals		share (%)		change (%)
	2014	2015	2014	2015	2015*/14
Phnom Penh & Surrounding	174,422	203,581	51.2	54.9	16.7
Siem Reap Angkor	126,032	114,686	37.0	30.9	-9.0
Coastal Areas	36,028	47,095	10.6	12.7	30.7
Eco-tourism Areas	4,481	5,382	1.3	1.5	20.1
Total	340,963	370,744	100.0	100.0	8.7

International Tourist Arrivals to Cambodia by Country of Residence in June 2015

(by all mean of transportations)

Regions Country of Residence	2014	2015			Total	Female	Share	Change
		Purpose of Visit					(%)	(%)
		Holiday	Business	Other			2015*	2015*/14
Grand Total	300,454	282,652	23,421	12,194	318,267	131,646	100.0	5.9
Asia and the Pacific	250,822	233,947	20,111	11,063	265,121	108,719	83.3	5.7
ASEAN (Southeast Asia)	160,435	150,858	7,717	10,097	168,672	69,544	53.0	5.1
Brunei Darussalam	127	50	2	7	59	29	0.0	-53.5
Indonesia	2,856	1,951	924	25	2,900	769	0.9	1.5
Lao PDR	33,649	28,455	9	146	28,610	16,011	9.0	-15.0
Malaysia	12,857	12,418	766	15	13,199	4,290	4.1	2.7
Myanmar	487	697	34	60	791	331	0.2	62.4
Philippines	8,054	6,948	790	69	7,807	4,095	2.5	-3.1
Singapore	7,304	6,532	237	26	6,795	2,149	2.1	-7.0
Thailand	16,504	19,462	1,408	1,085	21,955	8,021	6.9	33.0
Vietnam	78,597	74,345	3,547	8,664	86,556	33,849	27.2	10.1
Northeast Asia	77,079	69,898	11,299	618	81,815	33,357	25.7	6.1
China	34,373	38,487	6,715	230	45,432	19,803	14.3	32.2
Hong Kong (China)	924	811	12	3	826	404	0.3	-10.6
Japan	13,607	8,178	1,926	184	10,288	3,469	3.2	-24.4
Korea (ROK)	20,661	15,743	1,353	186	17,282	6,783	5.4	-16.4
Macau (China)		23	1	2	26	5	0.0	
Mongolia	32	15	3	2	20	10	0.0	-37.5
Taiwan (China)	7,482	6,641	1,289	11	7,941	2,883	2.5	6.1
Southern Asia	2,623	2,620	334	112	3,066	813	1.0	16.9
Afghanistan	50	14	1	3	18	3	0.0	-64.0
Bangladesh	168	118	27	39	184	20	0.1	9.5
Bhutan	14	7	1	2	10	3	0.0	-28.6
India	2,043	2,175	204	40	2,419	694	0.8	18.4
Nepal	143	127	22	10	159	29	0.0	11.2
Pakistan	76	94	43	13	150	34	0.0	97.4
Sri Lanka	129	85	36	5	126	30	0.0	-2.3
Oceania	10,274	10,156	599	139	10,894	4,792	3.4	6.0
Australia	8,799	8,849	496	124	9,469	4,182	3.0	7.6
Fiji	7	3	2	1	6	2	0.0	-14.3
New Zealand	1,468	1,304	101	14	1,419	608	0.4	-3.3
Other Asia & the Pacific	411	415	162	97	674	213	0.2	64.0
Europe	30,212	28,535	2,161	499	31,195	13,034	9.8	3.3
Northern Europe	10,713	10,711	703	106	11,520	4,789	3.6	7.5
Denmark	497	436	25	9	470	166	0.1	-5.4
Finland	285	211	22	4	237	93	0.1	-16.8
Iceland	37	24	1	1	26	10	0.0	-29.7
Ireland	771	782	32	7	821	380	0.3	6.5
Norway	436	502	20	2	524	199	0.2	20.2
Sweden	490	512	38	8	558	184	0.2	13.9
United Kingdom	8,197	8,244	565	75	8,884	3,757	2.8	8.4
Western Europe	11,533	11,108	998	264	12,370	4,966	3.9	7.3
Austria	264	216	21	7	244	85	0.1	-7.6
Belgium	640	634	52	19	705	245	0.2	10.2
France	6,214	5,638	594	142	6,374	2,654	2.0	2.6
Germany	2,601	2,731	162	54	2,947	1,117	0.9	13.3
Luxembourg	26	22	1	2	25	8	0.0	-3.8
Monaco	1	4	1	1	6	1	0.0	500.0
Netherlands	1,114	1,187	108	32	1,327	555	0.4	19.1
Switzerland	673	676	59	7	742	301	0.2	10.3
Central / Eastern Europe	4,541	3,190	212	45	3,447	1,730	1.1	-24.1
Bulgaria	33	44	4	2	50	20	0.0	51.5
Czech Republic	150	129	7	5	141	52	0.0	-6.0
Estonia	50	43	5	1	49	21	0.0	-2.0
Hungary	91	129	6	2	137	54	0.0	50.5
Kazakhstan	94	60	29	1	90	35	0.0	-4.3
Kyrgyzstan		4	2	1	7	4	0.0	
Latvia		43	1	5	49	22	0.0	
Lithuania	47	55	4	3	62	27	0.0	31.9
Poland	353	293	9	2	304	146	0.1	-13.9
Romania	94	51	3	2	56	27	0.0	-40.4
Russian Federation	3,354	2,020	114	10	2,144	1,133	0.7	-36.1
Slovakia	76	63	6	4	73	29	0.0	-3.9
Ukraine	161	191	15	3	209	103	0.1	29.8
Uzbekistan	38	65	7	4	76	57	0.0	100.0

Source: Statistics and Tourism Information Department, MOT

International Tourist Arrivals to Cambodia by Country of Residence in June 2015

(by all mean of transportations)

Regions Country of Residence	2014	2015			Total	Female	Share	Change
		Purpose of Visit					(%)	(%)
		Holiday	Business	Other			2015*	2015*/14
Grand Total	300,454	282,652	23,421	12,194	318,267	131,646	100.0	5.9
Southern Europe	3,039	3,124	180	49	3,353	1,345	1.1	10.3
Croatia	11	27	1	2	30	11	0.0	172.7
Greece	42	33	4	1	38	14	0.0	-9.5
Italy	1,059	864	68	16	948	333	0.3	-10.5
Malta		18	1	2	21	3	0.0	
Portugal	204	266	16	1	283	111	0.1	38.7
Serbia	20	17	2	1	20	10	0.0	0.0
Slovenia	29	40	2	2	44	18	0.0	51.7
Spain	1,488	1,626	51	11	1,688	757	0.5	13.4
Turkey	186	233	35	13	281	88	0.1	51.1
Other Europe	386	402	68	35	505	204	0.2	30.8
Americas	18,477	19,080	1,015	558	20,653	9,493	6.5	11.8
North America	17,016	17,539	901	498	18,938	8,725	6.0	11.3
Canada	2,960	2,770	191	42	3,003	1,380	0.9	1.5
Mexico	460	517	7	3	527	242	0.2	14.6
United States	13,596	14,252	703	453	15,408	7,103	4.8	13.3
Central America	48	31	4	3	38	15	0.0	
Costa Rica	48	27	2	1	30	13	0.0	-37.5
Honduras		2	1	1	4	1	0.0	
Jamaica		2	1	1	4	1	0.0	
South America	1,209	1,254	36	15	1,305	629	0.4	7.9
Argentina	226	212	2	3	217	99	0.1	-4.0
Brazil	402	465	17	4	486	241	0.2	20.9
Chile	264	214	2	1	217	106	0.1	-17.8
Colombia	218	222	6	2	230	121	0.1	5.5
Ecuador	21	36	3	1	40	18	0.0	90.5
Peru	53	49	1	1	51	19	0.0	-3.8
Uruguay	25	27	2	1	30	9	0.0	20.0
Venezuela		29	3	2	34	16	0.0	
Other Americas	204	256	74	42	372	124	0.1	82.4
Africa	433	536	86	51	673	255	0.2	55.4
North Africa	5	32	5	11	48	19	0.0	
Morocco		20	2	3	25	11	0.0	
Sudan	5	7	1	7	15	4	0.0	
Tunisia		5	2	1	8	4	0.0	
Subsaharan Africa	381	451	71	31	553	210	0.2	45.1
Cameroon	13	7	1	1	9	0	0.0	-30.8
Congo	1	5	0	5	10	4	0.0	900.0
Ghana	3	8	0	1	9	3	0.0	200.0
Kenya	29	22	1	2	25	12	0.0	-13.8
Liberia	1	3	0	1	4	2	0.0	
Nigeria	54	39	40	9	88	21	0.0	63.0
South Africa	274	346	25	7	378	161	0.1	38.0
Tanzania		5	1	3	9	1	0.0	
Uganda	6	11	2	1	14	3	0.0	133.3
Zimbabwe		5	1	1	7	3	0.0	
Other Africa	47	53	10	9	72	26	0.0	53.2
Middle East	510	554	48	23	625	145	0.2	22.5
Egypt	22	30	1	2	33	9	0.0	50.0
Iran	38	19	2	1	22	7	0.0	-42.1
Iraq	7	10	1	1	12	1	0.0	71.4
Israel	268	273	24	1	298	90	0.1	11.2
Jordan		34	3	2	39	6	0.0	
Kuwait	81	49	1	2	52	1	0.0	-35.8
Oman	11	10	1	1	12	1	0.0	9.1
Palestine	8	6	0	1	7	1	0.0	-12.5
Qatar	0	3	1	1	5	1	0.0	
Saudi Arabia	23	17	1	2	20	1	0.0	-13.0
Syria		20	2	1	23	5	0.0	
United Arab Emirates	7	5	1	1	7	1	0.0	0.0
Yemen	9	27	2	1	30	4	0.0	233.3
Other Middle East	36	51	8	6	65	17	0.0	80.6