



KINGDOM OF CAMBODIA
NATION RELIGION KING



TOURISM STATISTICS REPORT

August 2015

MINISTRY OF TOURISM

Statistics and Tourism Information Department

No. A3, Street 169, Sangkat Veal Vong, Khan 7 Makara, Phnom Penh, Cambodia.

Fax: +855 23 885003

E-mail: kong@mot.gov.kh

Web site: www.mot.gov.kh

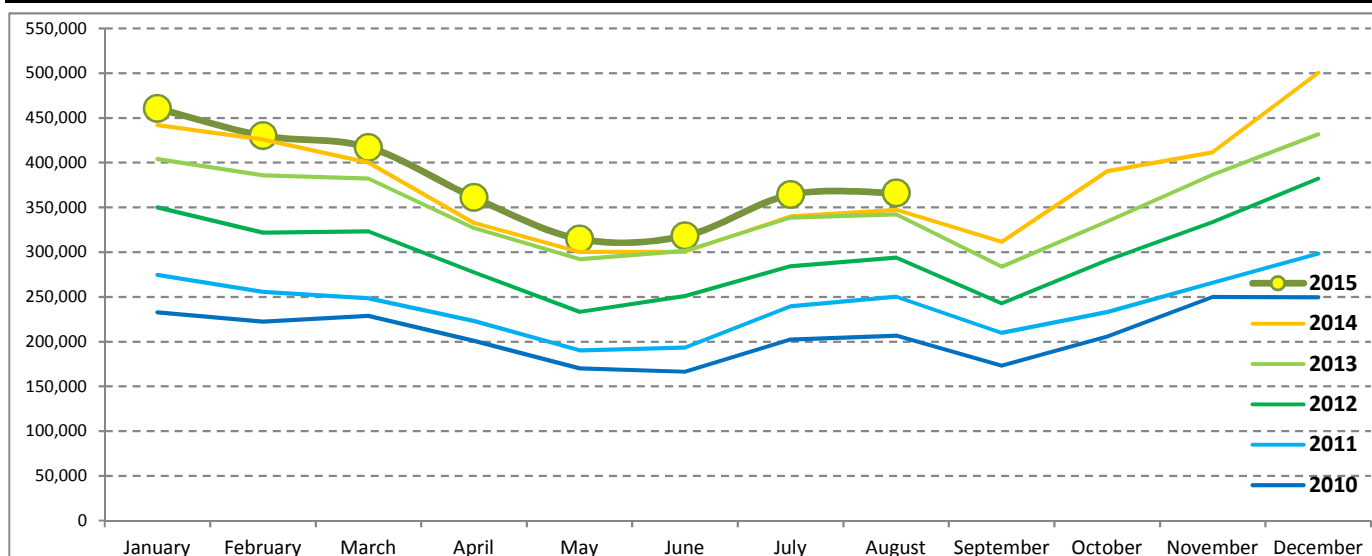
Tourism Highlights

International Tourist Arrivals, Average Length of Stay, Hotels Occupancy & Tourism Receipts 1993 - 2014

Years	Int'l Tourist Arrivals		Average Length	Hotels Occupancy	Tourism Receipts
	Number	Change (%)	of Stay (Days)	(%)	(Million US\$)
1993	118,183	-	N/A	N/A	N/A
1994	176,617	49.4	N/A	N/A	N/A
1995	219,680	24.4	8.00	37.00	100
1996	260,489	18.6	7.50	40.00	118
1997	218,843	-16.0	6.40	30.00	103
1998	286,524	30.9	5.20	40.00	166
1999	367,743	28.3	5.50	44.00	190
2000	466,365	26.8	5.50	45.00	228
2001	604,919	29.7	5.50	48.00	304
2002	786,524	30.0	5.80	50.00	379
2003	701,014	-10.9	5.50	50.00	347
2004	1,055,202	50.5	6.30	52.00	578
2005	1,421,615	34.7	6.30	52.00	832
2006	1,700,041	19.6	6.50	54.79	1,049
2007	2,015,128	18.5	6.50	54.79	1,400
2008	2,125,465	5.5	6.65	62.68	1,595
2009	2,161,577	1.7	6.45	63.57	1,561
2010	2,508,289	16.0	6.45	65.74	1,786
2011	2,881,862	14.9	6.50	66.15	1,912
2012	3,584,307	24.4	6.30	68.49	2,210
2013	4,210,165	17.5	6.75	69.53	2,547
2014	4,502,775	7.0	6.50	67.55	2,736

International Tourist Arrivals to Cambodia

Months	2010	2011	2012	2013	2014	2015	Change (%)				
							11/10	12/11	13/12	14/13	15*/14
Q1	683,692	778,467	995,210	1,172,072	1,267,922	1,307,836	13.9	27.8	17.8	8.2	3.1
January	232,590	274,471	350,257	404,106	442,045	460,577	18.0	27.6	15.4	9.4	4.2
February	222,354	255,499	321,870	385,760	425,801	430,207	14.9	26.0	19.8	10.4	1.0
March	228,748	248,497	323,083	382,206	400,076	417,052	8.6	30.0	18.3	4.7	4.2
Q2	537,464	606,562	761,442	920,527	933,446	994,154	12.9	25.5	20.9	1.4	6.5
April	200,965	223,032	277,304	327,000	332,690	361,139	11.0	24.3	17.9	1.7	8.6
May	170,164	190,258	233,220	292,115	300,302	314,748	11.8	22.6	25.3	2.8	4.8
June	166,335	193,272	250,918	301,412	300,454	318,267	16.2	29.8	20.1	-0.3	5.9
Q3	582,024	699,760	820,888	964,612	998,690	730,421	20.2	17.3	17.5	3.5	
July	202,349	239,527	284,282	338,761	340,091	364,325	18.4	18.7	19.2	0.4	7.1
August	206,563	250,429	293,859	342,064	347,211	366,096	21.2	17.3	16.4	1.5	5.4
September	173,112	209,804	242,747	283,787	311,388		21.2	15.7	16.9	9.7	
Q4	705,109	797,073	1,006,767	1,152,954	1,302,717	0	13.0	26.3	14.5	13.0	
October	205,515	233,190	290,959	334,410	390,637		13.5	24.8	14.9	16.8	
November	249,892	265,539	333,482	386,737	411,501		6.3	25.6	16.0	6.4	
December	249,702	298,344	382,326	431,807	500,579		19.5	28.1	12.9	15.9	
Total	2,508,289	2,881,862	3,584,307	4,210,165	4,502,775	3,032,411	14.9	24.4	17.5	7.0	5.0



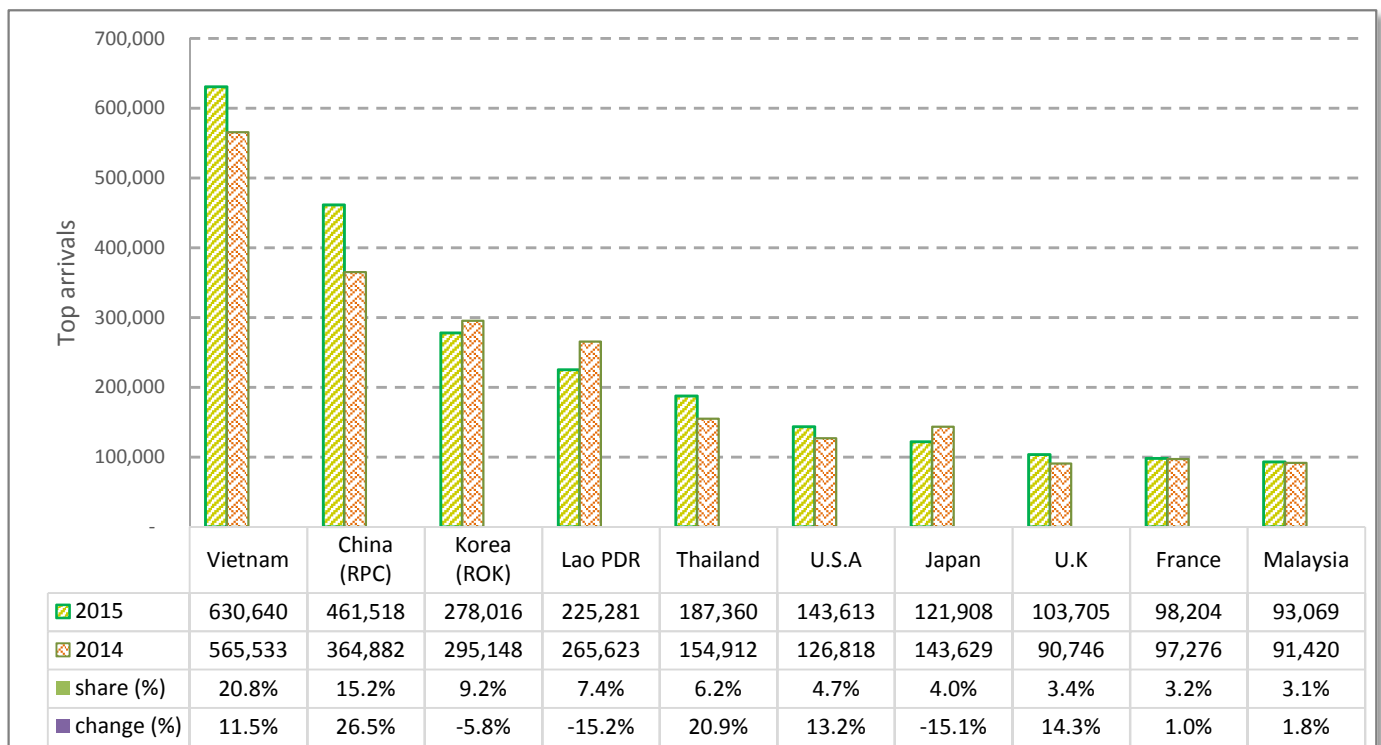
CAMBODIA: TOURISM STATISTICS REPORT IN THE FIRST EIGHT MONTHS 2015

I. INBOUND TOURISM

1. International tourist arrivals in January - August 2015

	Inbound tourism		share (%)		change (%)
	2014	2015	2014	2015	2015*/14
Air	1,486,192	1,628,812	51.4	53.7	9.6
Phnom Penh Int'l Airport (PNH)	596,128	698,437	20.6	23.0	17.2
Siem Reap Int'l Airport (REP)	890,064	930,375	30.8	30.7	4.5
Land and Water ways	1,402,478	1,403,599	48.6	46.3	0.1
Land	1,343,808	1,309,197	46.5	43.2	-2.6
Waterway	58,670	94,402	2.0	3.1	60.9
Total	2,888,670	3,032,411	100.0	100.0	5.0

2. Top ten markets arrivals in January - August 2015



II. OUTBOUND TOURISM

Outbound tourism in January - August 2015

	Outbound tourism		change (%)
	2014	2015	2015*/14
Cambodian Outbound Tourists	621,548	758,041	22.0
International Tourists Departure	2,863,573	2,929,846	2.3

III. INTERNAL TOURISM

Foreign visitor arrivals to the regions in January - August 2015

	Arrivals		share (%)		change (%)
	2014	2015	2014	2015	2015*/14
Phnom Penh & Surrounding	1,300,091	1,605,991	39.2	45.4	23.5
Siem Reap Angkor	1,588,579	1,426,420	47.9	40.4	-10.2
Coastal Areas	386,573	457,780	11.7	13.0	18.4
Eco-tourism Areas	41,762	43,470	1.3	1.2	4.1
Total	3,317,005	3,533,661	100.0	100.0	6.5

International Tourist Arrivals to Cambodia by Country of Residence in January - August 2015

(by all mean of transportations)

Regions Country of Residence	2014	2015			Total	Female	Share	Change
		Purpose of Visit					(%)	(%)
		Holiday	Business	Others			2015*	2015*/14
Grand Total	2,888,670	2,740,776	194,840	96,795	3,032,411	1,335,768	100.0	5.0
Asia and the Pacific	2,206,549	2,088,286	166,306	81,944	2,336,536	1,027,741	77.1	5.9
ASEAN (Southeast Asia)	1,211,890	1,131,121	61,864	71,490	1,264,475	567,437	41.7	4.3
Brunei Darussalam	630	440	17	82	539	234	0.0	-14.4
Indonesia	23,445	17,640	8,425	920	26,985	7,434	0.9	15.1
Lao PDR	265,623	218,499	106	6,676	225,281	130,318	7.4	-15.2
Malaysia	91,420	87,046	5,765	258	93,069	29,879	3.1	1.8
Myanmar	3,892	5,198	352	352	5,902	2,567	0.2	51.6
Philippines	66,612	47,578	6,785	687	55,050	31,150	1.8	-17.4
Singapore	39,823	37,637	1,805	207	39,649	12,474	1.3	-0.4
Thailand	154,912	165,153	11,000	11,207	187,360	74,713	6.2	20.9
Vietnam	565,533	551,930	27,609	51,101	630,640	278,668	20.8	11.5
Northeast Asia	874,010	841,152	96,130	6,731	944,013	408,036	31.1	8.0
China	364,882	399,299	59,844	2,375	461,518	209,634	15.2	26.5
Hong Kong (China)	4,967	7,405	110	28	7,543	3,524	0.2	51.9
Japan	143,629	105,260	14,491	2,157	121,908	46,902	4.0	-15.1
Korea (ROK)	295,148	265,188	10,778	2,050	278,016	117,500	9.2	-5.8
Macau (China)		259	6	11	276	109	0.0	
Mongolia	282	269	19	21	309	168	0.0	9.6
Taiwan (China)	65,102	63,472	10,882	89	74,443	30,199	2.5	14.3
Southern Asia	21,946	22,246	3,244	1,509	26,999	7,354	0.9	23.0
Afghanistan	186	51	6	19	76	18	0.0	-59.1
Bangladesh	1,182	947	255	136	1,338	217	0.0	13.2
Bhutan	66	117	5	16	138	57	0.0	109.1
India	17,468	18,685	2,092	961	21,738	6,251	0.7	24.4
Nepal	1,079	1,112	203	181	1,496	371	0.0	38.6
Pakistan	792	583	275	105	963	176	0.0	21.6
Sri Lanka	1,173	751	408	91	1,250	264	0.0	6.6
Oceania	96,556	91,954	4,633	1,412	97,999	43,682	3.2	1.5
Australia	83,243	78,083	3,920	1,241	83,244	37,179	2.7	0.0
Fiji	94	76	24	16	116	38	0.0	23.4
New Zealand	13,219	13,795	689	155	14,639	6,465	0.5	10.7
Other Asia & the Pacific	2,147	1,813	435	802	3,050	1,232	0.1	42.1
Europe	485,940	444,496	19,313	8,048	471,857	207,108	15.6	-2.9
Northern Europe	129,861	132,834	7,605	1,766	142,205	59,871	4.7	9.5
Denmark	8,897	7,936	250	135	8,321	3,580	0.3	-6.5
Finland	4,541	4,239	195	87	4,521	1,759	0.1	-0.4
Iceland	454	455	9	19	483	193	0.0	6.4
Ireland	6,986	7,595	245	85	7,925	3,542	0.3	13.4
Norway	6,769	6,268	149	59	6,476	2,875	0.2	-4.3
Sweden	11,468	10,284	332	158	10,774	4,341	0.4	-6.1
United Kingdom	90,746	96,057	6,425	1,223	103,705	43,581	3.4	14.3
Western Europe	199,966	195,567	8,112	3,348	207,027	89,900	6.8	3.5
Austria	6,039	6,544	159	73	6,776	2,839	0.2	12.2
Belgium	10,624	10,603	425	246	11,274	4,702	0.4	6.1
France	97,276	91,747	4,735	1,722	98,204	43,724	3.2	1.0
Germany	54,085	54,387	1,442	794	56,623	23,954	1.9	4.7
Luxembourg	353	437	7	13	457	194	0.0	29.5
Monaco	41	39	5	10	54	21	0.0	31.7
Netherlands	18,646	18,261	857	351	19,469	8,409	0.6	4.4
Switzerland	12,902	13,549	482	139	14,170	6,057	0.5	9.8
Central / Eastern Europe	105,786	61,826	1,803	1,411	65,040	32,405	2.1	-38.5
Bulgaria	749	966	23	118	1,107	491	0.0	47.8
Czech Republic	3,716	3,661	49	66	3,776	1,580	0.1	1.6
Estonia	1,260	1,154	29	22	1,205	519	0.0	-4.4
Hungary	2,089	2,627	70	85	2,782	1,216	0.1	33.2
Kazakhstan	2,014	1,504	179	27	1,710	908	0.1	-15.1
Kyrgyzstan		92	17	11	120	53	0.0	
Latvia		479	19	37	535	243	0.0	
Lithuania	1,046	1,061	16	41	1,118	557	0.0	6.9
Poland	7,716	8,200	83	207	8,490	4,198	0.3	10.0
Romania	1,217	1,298	52	195	1,545	723	0.1	27.0
Russian Federation	79,930	35,570	1,032	261	36,863	19,124	1.2	-53.9
Slovakia	1,603	1,498	42	43	1,583	677	0.1	-1.2
Ukraine	4,055	3,242	140	283	3,665	1,759	0.1	-9.6
Uzbekistan	391	474	52	15	541	357	0.0	38.4

Source: Statistics and Tourism Information Department, MOT

International Tourist Arrivals to Cambodia by Country of Residence in January - August 2015

(by all mean of transportations)

Regions Country of Residence	2014	2015			Total	Female	Share	Change
		Purpose of Visit					(%)	(%)
		Holiday	Business	Others			2015*	2015*/14
Grand Total	2,888,670	2,740,776	194,840	96,795	3,032,411	1,335,768	100.0	5.0
Southern Europe	48,544	52,699	1,517	960	55,176	23,877	1.8	13.7
Croatia	505	627	24	145	796	312	0.0	57.6
Greece	874	1,033	42	35	1,110	440	0.0	27.0
Italy	20,458	20,466	583	219	21,268	8,824	0.7	4.0
Malta		279	7	15	301	117	0.0	
Portugal	2,735	3,418	123	86	3,627	1,660	0.1	32.6
Serbia	469	440	17	105	562	246	0.0	19.8
Slovenia	670	691	28	35	754	331	0.0	12.5
Spain	19,777	22,399	359	163	22,921	10,655	0.8	15.9
Turkey	3,056	3,346	334	157	3,837	1,292	0.1	25.6
Other Europe	1,783	1,570	276	563	2,409	1,055	0.1	35.1
Americas	184,658	195,190	8,087	5,945	209,222	95,671	6.9	13.3
North America	165,733	174,023	7,554	5,023	186,600	84,807	6.2	12.6
Canada	35,455	36,460	1,565	464	38,489	17,602	1.3	8.6
Mexico	3,460	4,387	41	70	4,498	2,262	0.1	30.0
United States	126,818	133,176	5,948	4,489	143,613	64,943	4.7	13.2
Central America	232	332	24	94	450	203	0.0	
Costa Rica	232	266	10	25	301	146	0.0	29.7
Honduras		28	8	38	74	30	0.0	
Jamaica		38	6	31	75	27	0.0	
South America	17,504	19,810	290	325	20,425	9,966	0.7	16.7
Argentina	4,427	5,484	36	28	5,548	2,676	0.2	25.3
Brazil	6,349	6,795	99	101	6,995	3,360	0.2	10.2
Chile	3,938	3,509	26	39	3,574	1,805	0.1	-9.2
Colombia	1,397	1,857	51	42	1,950	979	0.1	39.6
Ecuador	214	358	17	15	390	198	0.0	82.2
Peru	551	552	14	37	603	309	0.0	9.4
Uruguay	628	765	11	29	805	381	0.0	28.2
Venezuela		490	36	34	560	258	0.0	
Other Americas	1,189	1,025	219	503	1,747	695	0.1	46.9
Africa	3,686	4,331	759	566	5,656	2,171	0.2	53.4
North Africa	53	455	42	65	562	224	0.0	
Morocco		299	27	16	342	148	0.0	
Sudan	53	61	6	32	99	33	0.0	86.8
Tunisia		95	9	17	121	43	0.0	
Subsaharan Africa	3,377	3,644	664	390	4,698	1,803	0.2	39.1
Cameroon	99	123	10	25	158	45	0.0	59.6
Congo	32	38	4	21	63	18	0.0	96.9
Ghana	70	42	9	8	59	12	0.0	-15.7
Kenya	167	176	12	19	207	102	0.0	24.0
Liberia	15	30	5	8	43	9	0.0	186.7
Nigeria	384	309	372	32	713	81	0.0	85.7
South Africa	2,572	2,788	230	238	3,256	1,477	0.1	26.6
Tanzania		33	5	16	54	13	0.0	
Uganda	38	56	6	8	70	17	0.0	84.2
Zimbabwe		49	11	15	75	29	0.0	
Other Africa	256	232	53	111	396	144	0.0	54.7
Middle East	7,837	8,473	375	292	9,140	3,077	0.3	16.6
Egypt	214	311	48	13	372	88	0.0	73.8
Iran	361	301	23	9	333	112	0.0	-7.8
Iraq	66	69	5	11	85	14	0.0	28.8
Israel	5,909	5,757	172	22	5,951	2,477	0.2	0.7
Jordan		198	26	15	239	51	0.0	
Kuwait	643	692	5	42	739	36	0.0	14.9
Oman	113	138	4	18	160	23	0.0	41.6
Palestine	51	32	6	10	48	7	0.0	-5.9
Qatar	21	65	5	17	87	27	0.0	314.3
Saudi Arabia	109	208	9	24	241	18	0.0	121.1
Syria		123	8	10	141	29	0.0	
United Arab Emirates	67	255	25	21	301	85	0.0	349.3
Yemen	109	121	6	19	146	25	0.0	33.9
Other Middle East	174	203	33	61	297	85	0.0	70.7

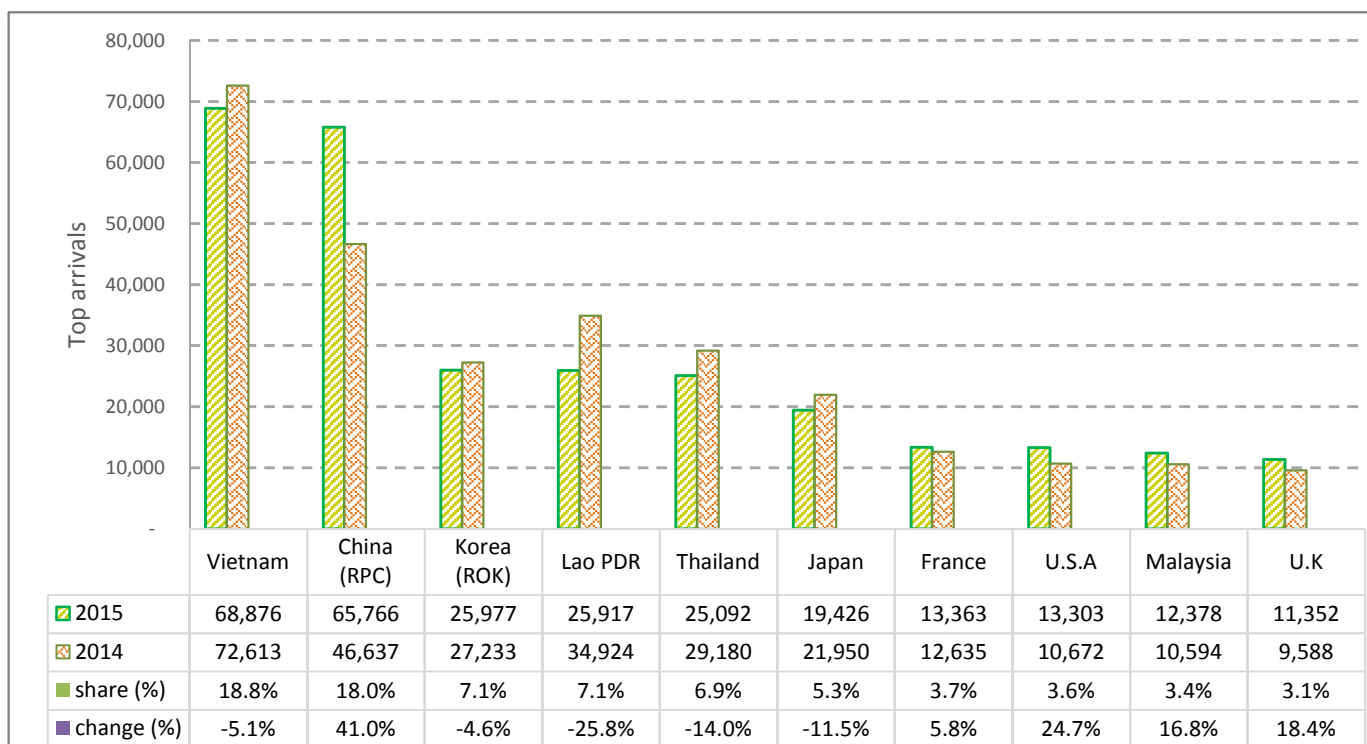
CAMBODIA: TOURISM STATISTICS REPORT IN AUGUST 2015

I. INBOUND TOURISM

1. International tourist arrivals in August 2015

	Inbound tourism		share (%)		change (%)
	2014	2015	2014	2015	2015*/14
Air	179,657	204,276	51.7	55.8	13.7
Phnom Penh Int'l Airport (PNH)	73,895	92,880	21.3	25.4	25.7
Siem Reap Int'l Airport (REP)	105,762	111,396	30.5	30.4	5.3
Land and Water ways	167,554	161,820	48.3	44.2	-3.4
Land	160,159	149,180	46.1	40.7	-6.9
Waterway	7,395	12,640	2.1	3.5	70.9
Total	347,211	366,096	100.0	100.0	5.4

2. Top ten markets arrivals in August 2015



II. OUTBOUND TOURISM

Outbound tourism in August 2015

	Outbound tourism		change (%)
	2014	2015	2015*/14
Cambodian Outbound Tourists	81,405	108,335	33.1
International Tourists Departure	340,519	369,558	8.5

III. INTERNAL TOURISM

Foreign visitor arrivals to the regions in August 2015

	Arrivals		share (%)		change (%)
	2014	2015	2014	2015	2015*/14
Phnom Penh & Surrounding	164,071	199,998	41.5	48.2	21.9
Siem Reap Angkor	183,140	166,098	46.4	40.0	-9.3
Coastal Areas	43,543	44,145	11.0	10.6	1.4
Eco-tourism Areas	4,278	4,641	1.1	1.1	8.5
Total	395,032	414,882	100.0	100.0	5.0

International Tourist Arrivals to Cambodia by Country of Residence in August 2015

(by all mean of transportations)

Regions Country of Residence	2014	2015			Total	Female	Share	Change
		Purpose of Visit					(%)	(%)
		Holiday	Business	Others			2015*	2015*/14
Grand Total	347,211	325,581	26,709	13,806	366,096	160,813	100.0	5.4
Asia and the Pacific	278,833	253,176	23,145	11,472	287,793	126,281	78.6	3.2
ASEAN (Southeast Asia)	160,929	131,665	8,788	8,568	149,021	67,114	40.7	-7.4
Brunei Darussalam	82	44	1	8	53	27	0.0	-35.4
Indonesia	2,944	2,206	1,056	27	3,289	949	0.9	11.7
Lao PDR	34,924	24,219	16	1,682	25,917	15,677	7.1	-25.8
Malaysia	10,594	11,658	694	26	12,378	3,984	3.4	16.8
Myanmar	439	605	43	13	661	305	0.2	50.6
Philippines	5,458	6,880	844	42	7,766	4,386	2.1	42.3
Singapore	4,695	4,740	226	23	4,989	1,521	1.4	6.3
Thailand	29,180	19,269	1,597	4,226	25,092	8,709	6.9	-14.0
Vietnam	72,613	62,044	4,311	2,521	68,876	31,556	18.8	-5.1
Northeast Asia	105,087	106,544	13,161	2,036	121,741	52,455	33.3	15.8
China	46,637	56,901	8,252	613	65,766	30,012	18.0	41.0
Hong Kong (China)	734	773	10	7	790	350	0.2	7.6
Japan	21,950	16,715	1,960	751	19,426	7,711	5.3	-11.5
Korea (ROK)	27,233	23,835	1,489	653	25,977	10,409	7.1	-4.6
Macau (China)		15	1	2	18	6	0.0	
Mongolia	46	32	4	6	42	19	0.0	-8.7
Taiwan (China)	8,487	8,273	1,445	4	9,722	3,948	2.7	14.6
Southern Asia	3,094	3,018	557	388	3,963	923	1.1	28.1
Afghanistan	9	2	1	2	5	0	0.0	-44.4
Bangladesh	253	121	45	27	193	38	0.1	-23.7
Bhutan	5	42	1	1	44	3	0.0	780.0
India	2,373	2,459	351	297	3,107	737	0.8	30.9
Nepal	142	120	33	8	161	52	0.0	13.4
Pakistan	115	82	62	27	171	38	0.0	48.7
Srilanka	197	192	64	26	282	55	0.1	43.1
Oceania	9,405	11,785	613	154	12,552	5,575	3.4	33.5
Australia	7,989	10,040	499	124	10,663	4,785	2.9	33.5
Fiji	11	11	1	4	16	7	0.0	45.5
New Zealand	1,405	1,734	113	26	1,873	783	0.5	33.3
Other Asia & the Pacific	318	164	26	326	516	214	0.1	62.3
Europe	52,548	54,966	2,384	1,329	58,679	26,162	16.0	11.7
Northern Europe	11,821	12,882	708	204	13,794	5,889	3.8	16.7
Denmark	440	401	37	21	459	187	0.1	4.3
Finland	220	161	32	10	203	73	0.1	-7.7
Iceland	25	47	1	2	50	20	0.0	100.0
Ireland	795	988	22	6	1,016	469	0.3	27.8
Norway	319	227	15	5	247	90	0.1	-22.6
Sweden	434	389	58	20	467	155	0.1	7.6
United Kingdom	9,588	10,669	543	140	11,352	4,895	3.1	18.4
Western Europe	22,614	22,980	1,176	545	24,701	10,894	6.7	9.2
Austria	501	679	18	2	699	315	0.2	39.5
Belgium	1,109	1,191	65	39	1,295	567	0.4	16.8
France	12,635	12,328	690	345	13,363	6,013	3.7	5.8
Germany	5,151	5,259	217	97	5,573	2,400	1.5	8.2
Luxembourg	63	64	2	3	69	25	0.0	9.5
Monaco	2	3	1	2	6	2	0.0	200.0
Netherlands	2,271	2,452	117	44	2,613	1,131	0.7	15.1
Switzerland	882	1,004	66	13	1,083	441	0.3	22.8
Central / Eastern Europe	4,875	3,599	262	169	4,030	1,981	1.1	-17.3
Bulgaria	35	88	6	12	106	48	0.0	202.9
Czech Republic	247	245	4	1	250	114	0.1	1.2
Estonia	208	48	5	6	59	25	0.0	-71.6
Hungary	108	102	7	4	113	49	0.0	4.6
Kazakhstan	124	67	35	2	104	56	0.0	-16.1
Kyrgyzstan		10	7	3	20	8	0.0	
Latvia		22	1	6	29	8	0.0	
Lithuania	46	45	2	1	48	28	0.0	4.3
Poland	457	569	19	22	610	298	0.2	33.5
Romania	105	92	6	27	125	54	0.0	19.0
Russian Federation	3,205	2,014	142	42	2,198	1,119	0.6	-31.4
Slovakia	74	72	8	1	81	38	0.0	9.5
Ukraine	218	181	9	42	232	98	0.1	6.4
Uzbekistan	48	44	11	0	55	38	0.0	14.6

Source: Statistics and Tourism Information Department, MOT

International Tourist Arrivals to Cambodia by Country of Residence in August 2015

(by all mean of transportations)

Regions Country of Residence	2014	2015			Total	Female	Share	Change
		Purpose of Visit					(%)	(%)
		Holiday	Business	Others	2015*	2015*/14		
Grand Total	347,211	325,581	26,709	13,806	366,096	160,813	100.0	5.4
Southern Europe	12,987	15,363	225	157	15,745	7,231	4.3	21.2
Croatia	45	40	4	14	58	21	0.0	28.9
Greece	154	170	3	7	180	76	0.0	16.9
Italy	4,871	5,743	73	59	5,875	2,599	1.6	20.6
Malta		34	1	2	37	16	0.0	
Portugal	674	775	25	10	810	392	0.2	20.2
Serbia	105	26	3	18	47	19	0.0	-55.2
Slovenia	34	48	5	6	59	26	0.0	73.5
Spain	6,833	8,317	45	27	8,389	3,997	2.3	22.8
Turkey	271	210	66	14	290	85	0.1	7.0
Other Europe	251	142	13	254	409	167	0.1	62.9
Americas	14,682	16,043	1,056	826	17,925	7,816	4.9	22.1
North America	13,202	14,696	1,003	599	16,298	7,053	4.5	23.5
Canada	2,195	2,390	166	59	2,615	1,190	0.7	19.1
Mexico	335	352	7	21	380	183	0.1	13.4
United States	10,672	11,954	830	519	13,303	5,680	3.6	24.7
Central America	28	31	4	11	46	18	0.0	
Costa Rica	28	22	2	4	28	11	0.0	0.0
Honduras		3	1	2	6	3	0.0	
Jamaica		6	1	5	12	4	0.0	
South America	1,252	1,241	37	49	1,327	659	0.4	6.0
Argentina	183	325	10	2	337	157	0.1	84.2
Brazil	434	298	15	16	329	167	0.1	-24.2
Chile	352	272	1	4	277	158	0.1	-21.3
Colombia	163	165	6	7	178	81	0.0	9.2
Ecuador	22	33	1	3	37	18	0.0	68.2
Peru	80	79	2	5	86	46	0.0	7.5
Uruguay	18	27	1	10	38	9	0.0	111.1
Venezuela		42	1	2	45	23	0.0	
Other Americas	200	75	12	167	254	86	0.1	27.0
Africa	445	520	85	108	713	270	0.2	60.2
North Africa	11	82	4	16	102	41	0.0	
Morocco		64	2	1	67	30	0.0	
Sudan	11	7	1	8	16	5	0.0	
Tunisia		11	1	7	19	6	0.0	
Subsaharan Africa	401	404	79	65	548	204	0.1	36.7
Cameroon	14	4	2	5	11	9	0.0	-21.4
Congo	5	7	1	1	9	2	0.0	80.0
Ghana	6	4	3	1	8	1	0.0	33.3
Kenya	22	14	1	8	23	14	0.0	4.5
Liberia	0	7	1	2	10	1	0.0	
Nigeria	46	49	46	3	98	9	0.0	113.0
South Africa	302	308	21	35	364	166	0.1	20.5
Tanzania		4	1	5	10	1	0.0	
Uganda	6	4	0	2	6	0	0.0	0.0
Zimbabwe		3	3	3	9	1	0.0	
Other Africa	33	34	2	27	63	25	0.0	90.9
Middle East	703	876	39	71	986	284	0.3	40.3
Egypt	35	30	6	1	37	8	0.0	5.7
Iran	35	18	4	1	23	11	0.0	-34.3
Iraq	20	8	0	2	10	4	0.0	-50.0
Israel	427	476	15	2	493	213	0.1	15.5
Jordan		19	7	6	32	6	0.0	
Kuwait	111	183	1	5	189	7	0.1	70.3
Oman	13	20	0	5	25	4	0.0	92.3
Palestine	5	6	1	2	9	0	0.0	80.0
Qatar	3	2	1	2	5	0	0.0	
Saudi Arabia	13	30	1	6	37	3	0.0	184.6
Syria		13	0	3	16	2	0.0	
United Arab Emirates	13	32	1	12	45	11	0.0	246.2
Yemen	5	17	0	9	26	4	0.0	420.0
Other Middle East	23	22	2	15	39	11	0.0	69.6