



KINGDOM OF CAMBODIA
NATION RELIGION KING



TOURISM STATISTICS REPORT

September 2015

MINISTRY OF TOURISM

Statistics and Tourism Information Department

No. A3, Street 169, Sangkat Veal Vong, Khan 7 Makara, Phnom Penh, Cambodia.

Fax: +855 23 885003

E-mail: kong@mot.gov.kh

Web site: www.mot.gov.kh

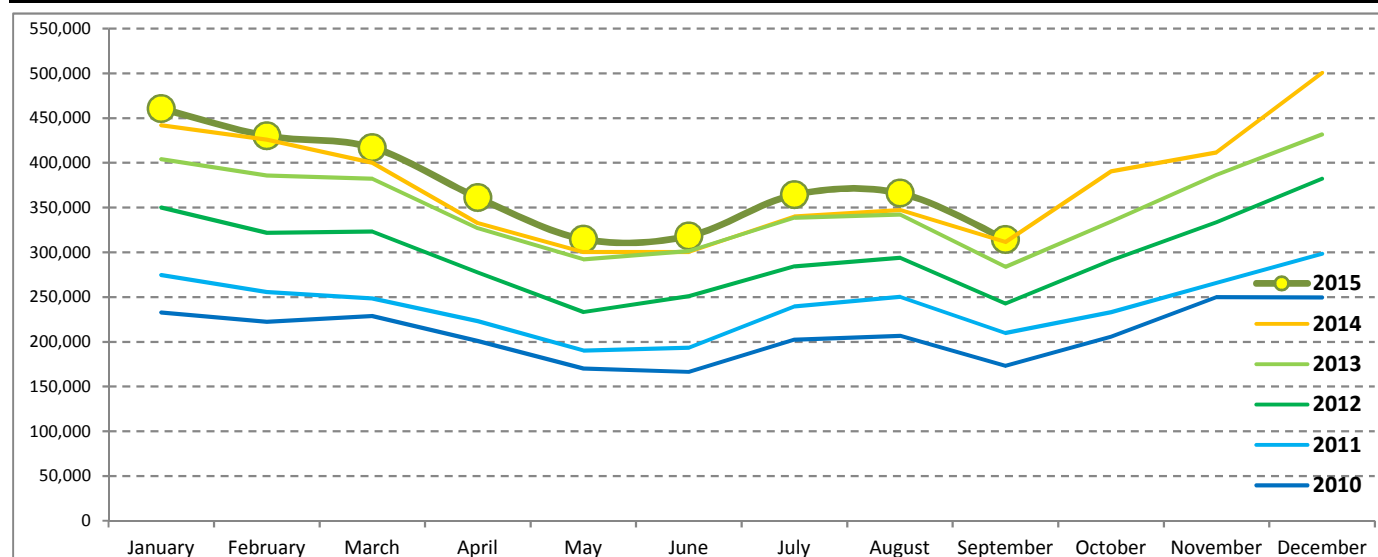
Tourism Highlights

International Tourist Arrivals, Average Length of Stay, Hotels Occupancy & Tourism Receipts 1993 - 2014

Years	Int'l Tourist Arrivals		Average Length	Hotels Occupancy	Tourism Receipts
	Number	Change (%)	of Stay (Days)	(%)	(Million US\$)
1993	118,183	-	N/A	N/A	N/A
1994	176,617	49.4	N/A	N/A	N/A
1995	219,680	24.4	8.00	37.00	100
1996	260,489	18.6	7.50	40.00	118
1997	218,843	-16.0	6.40	30.00	103
1998	286,524	30.9	5.20	40.00	166
1999	367,743	28.3	5.50	44.00	190
2000	466,365	26.8	5.50	45.00	228
2001	604,919	29.7	5.50	48.00	304
2002	786,524	30.0	5.80	50.00	379
2003	701,014	-10.9	5.50	50.00	347
2004	1,055,202	50.5	6.30	52.00	578
2005	1,421,615	34.7	6.30	52.00	832
2006	1,700,041	19.6	6.50	54.79	1,049
2007	2,015,128	18.5	6.50	54.79	1,400
2008	2,125,465	5.5	6.65	62.68	1,595
2009	2,161,577	1.7	6.45	63.57	1,561
2010	2,508,289	16.0	6.45	65.74	1,786
2011	2,881,862	14.9	6.50	66.15	1,912
2012	3,584,307	24.4	6.30	68.49	2,210
2013	4,210,165	17.5	6.75	69.53	2,547
2014	4,502,775	7.0	6.50	67.55	2,736

International Tourist Arrivals to Cambodia

Months	2010	2011	2012	2013	2014	2015	Change (%)				
							11/10	12/11	13/12	14/13	15*/14
Q1	683,692	778,467	995,210	1,172,072	1,267,922	1,307,836	13.9	27.8	17.8	8.2	3.1
January	232,590	274,471	350,257	404,106	442,045	460,577	18.0	27.6	15.4	9.4	4.2
February	222,354	255,499	321,870	385,760	425,801	430,207	14.9	26.0	19.8	10.4	1.0
March	228,748	248,497	323,083	382,206	400,076	417,052	8.6	30.0	18.3	4.7	4.2
Q2	537,464	606,562	761,442	920,527	933,446	994,154	12.9	25.5	20.9	1.4	6.5
April	200,965	223,032	277,304	327,000	332,690	361,139	11.0	24.3	17.9	1.7	8.6
May	170,164	190,258	233,220	292,115	300,302	314,748	11.8	22.6	25.3	2.8	4.8
June	166,335	193,272	250,918	301,412	300,454	318,267	16.2	29.8	20.1	-0.3	5.9
Q3	582,024	699,760	820,888	964,612	998,690	1,044,880	20.2	17.3	17.5	3.5	4.6
July	202,349	239,527	284,282	338,761	340,091	364,325	18.4	18.7	19.2	0.4	7.1
August	206,563	250,429	293,859	342,064	347,211	366,096	21.2	17.3	16.4	1.5	5.4
September	173,112	209,804	242,747	283,787	311,388	314,459	21.2	15.7	16.9	9.7	1.0
Q4	705,109	797,073	1,006,767	1,152,954	1,302,717	0	13.0	26.3	14.5	13.0	
October	205,515	233,190	290,959	334,410	390,637		13.5	24.8	14.9	16.8	
November	249,892	265,539	333,482	386,737	411,501		6.3	25.6	16.0	6.4	
December	249,702	298,344	382,326	431,807	500,579		19.5	28.1	12.9	15.9	
Total	2,508,289	2,881,862	3,584,307	4,210,165	4,502,775	3,346,870	14.9	24.4	17.5	7.0	4.6



Source: Statistics and Tourism Information Department, MOT

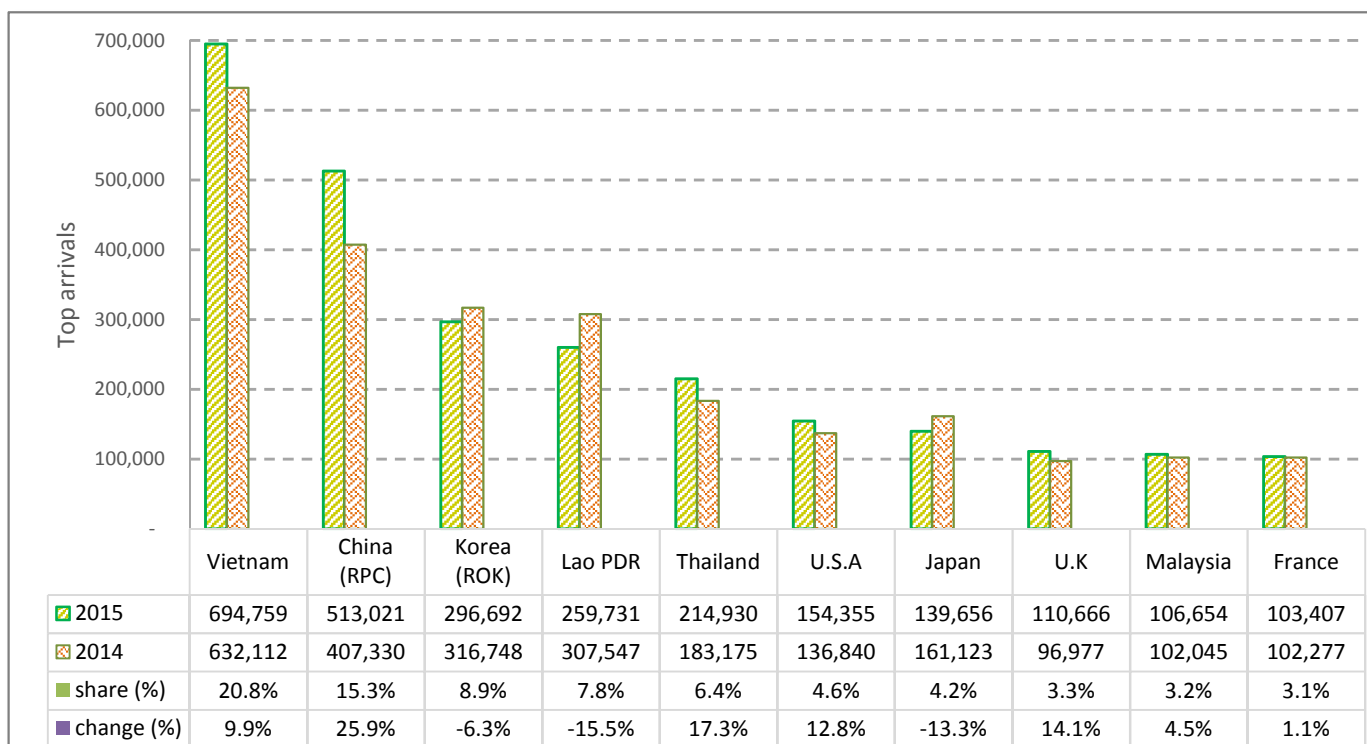
CAMBODIA: TOURISM STATISTICS REPORT IN THE FIRST NINE MONTHS 2015

I. INBOUND TOURISM

1. International tourist arrivals in January - September 2015

	Inbound tourism		share (%)		change (%)
	2014	2015	2014	2015	2015*/14
Air	1,634,656	1,794,664	51.1	53.6	9.8
Phnom Penh Int'l Airport (PNH)	662,742	777,106	20.7	23.2	17.3
Siem Reap Int'l Airport (REP)	971,914	1,017,558	30.4	30.4	4.7
Land and Water ways	1,565,402	1,552,206	48.9	46.4	-0.8
Land	1,499,371	1,451,092	46.9	43.4	-3.2
Waterway	66,031	101,114	2.1	3.0	53.1
Total	3,200,058	3,346,870	100.0	100.0	4.6

2. Top ten markets arrivals in January - September 2015



II. OUTBOUND TOURISM

Outbound tourism in January - September 2015

	Outbound tourism		change (%)
	2014	2015	2015*/14
Cambodian Outbound Tourists	707,579	864,237	22.1
International Tourists Departure	3,143,505	3,190,882	1.5

III. INTERNAL TOURISM

Foreign visitor arrivals to the regions in January - September 2015

	Arrivals		share (%)		change (%)
	2014	2015	2014	2015	2015*/14
Phnom Penh & Surrounding	1,458,877	1,799,944	39.7	46.3	23.4
Siem Reap Angkor	1,741,181	1,546,926	47.4	39.8	-11.2
Coastal Areas	427,477	492,499	11.6	12.7	15.2
Eco-tourism Areas	45,126	46,826	1.2	1.2	3.8
Total	3,672,661	3,886,195	100.0	100.0	5.8

International Tourist Arrivals to Cambodia by Country of Residence in January - September 2015

(by all mean of transportations)

Regions Country of Residence	2014	2015			Total	Female	Share	Change
		Purpose of Visit					(%)	(%)
		Holiday	Business	Others			2015*	2015*/14
Grand Total	3,200,058	3,018,790	218,621	109,459	3,346,870	1,450,250	100.0	4.6
Asia and the Pacific	2,473,588	2,323,542	186,830	93,258	2,603,630	1,122,523	77.8	5.3
ASEAN (Southeast Asia)	1,372,518	1,267,697	69,843	81,400	1,418,940	615,802	42.4	3.4
Brunei Darussalam	678	488	20	94	602	265	0.0	-11.2
Indonesia	26,039	19,643	9,460	956	30,059	8,249	0.9	15.4
Lao PDR	307,547	252,640	118	6,973	259,731	136,536	7.8	-15.5
Malaysia	102,045	99,955	6,406	293	106,654	34,487	3.2	4.5
Myanmar	4,306	5,770	397	374	6,541	2,800	0.2	51.9
Philippines	71,928	52,642	7,483	728	60,853	34,363	1.8	-15.4
Singapore	44,688	42,514	2,066	231	44,811	14,119	1.3	0.3
Thailand	183,175	190,074	12,406	12,450	214,930	83,151	6.4	17.3
Vietnam	632,112	603,971	31,487	59,301	694,759	301,832	20.8	9.9
Northeast Asia	963,725	925,811	107,719	7,586	1,041,116	448,424	31.1	8.0
China	407,330	443,180	67,135	2,706	513,021	232,371	15.3	25.9
Hong Kong (China)	5,725	8,966	141	31	9,138	4,202	0.3	59.6
Japan	161,123	120,969	16,282	2,405	139,656	54,114	4.2	-13.3
Korea (ROK)	316,748	282,395	11,987	2,310	296,692	124,527	8.9	-6.3
Macau (China)		296	7	14	317	126	0.0	
Mongolia	300	285	23	23	331	182	0.0	10.3
Taiwan (China)	72,499	69,720	12,144	97	81,961	32,902	2.4	13.1
Southern Asia	24,884	25,122	3,640	1,641	30,403	8,124	0.9	22.2
Afghanistan	193	55	7	22	84	21	0.0	-56.5
Bangladesh	1,386	1,128	279	147	1,554	251	0.0	12.1
Bhutan	76	121	5	18	144	58	0.0	89.5
India	19,793	21,098	2,370	1,064	24,532	6,922	0.7	23.9
Nepal	1,222	1,222	218	185	1,625	398	0.0	33.0
Pakistan	885	661	300	110	1,071	184	0.0	21.0
Sri Lanka	1,329	837	461	95	1,393	290	0.0	4.8
Oceania	109,962	102,752	5,169	1,634	109,555	48,733	3.3	-0.4
Australia	95,169	87,449	4,365	1,448	93,262	41,550	2.8	-2.0
Fiji	107	89	31	17	137	44	0.0	28.0
New Zealand	14,686	15,214	773	169	16,156	7,139	0.5	10.0
Other Asia & the Pacific	2,499	2,160	459	997	3,616	1,440	0.1	44.7
Europe	515,310	472,365	21,486	8,723	502,574	219,726	15.0	-2.5
Northern Europe	137,916	141,009	8,326	1,877	151,212	63,317	4.5	9.6
Denmark	9,196	8,254	285	148	8,687	3,716	0.3	-5.5
Finland	4,816	4,417	219	95	4,731	1,823	0.1	-1.8
Iceland	518	471	11	21	503	201	0.0	-2.9
Ireland	7,361	8,177	275	92	8,544	3,788	0.3	16.1
Norway	7,095	6,570	173	65	6,808	2,988	0.2	-4.0
Sweden	11,953	10,727	377	169	11,273	4,524	0.3	-5.7
United Kingdom	96,977	102,393	6,986	1,287	110,666	46,277	3.3	14.1
Western Europe	211,524	206,898	9,151	3,628	219,677	94,910	6.6	3.9
Austria	6,366	6,952	184	79	7,215	3,012	0.2	13.3
Belgium	11,229	11,268	476	278	12,022	5,007	0.4	7.1
France	102,277	96,200	5,349	1,858	103,407	45,723	3.1	1.1
Germany	58,040	58,345	1,647	860	60,852	25,693	1.8	4.8
Luxembourg	367	455	8	15	478	196	0.0	30.2
Monaco	55	41	5	12	58	22	0.0	5.5
Netherlands	19,680	19,426	946	368	20,740	8,904	0.6	5.4
Switzerland	13,510	14,211	536	158	14,905	6,353	0.4	10.3
Central / Eastern Europe	110,623	64,700	2,034	1,482	68,216	33,973	2.0	-38.3
Bulgaria	789	1,022	29	119	1,170	513	0.0	48.3
Czech Republic	3,830	3,805	57	86	3,948	1,655	0.1	3.1
Estonia	1,316	1,180	30	25	1,235	533	0.0	-6.2
Hungary	2,268	2,724	79	93	2,896	1,261	0.1	27.7
Kazakhstan	2,114	1,544	195	32	1,771	936	0.1	-16.2
Kyrgyzstan		96	18	14	128	54	0.0	
Latvia		515	20	39	574	262	0.0	
Lithuania	1,089	1,104	20	42	1,166	584	0.0	7.1
Poland	8,159	8,641	98	215	8,954	4,436	0.3	9.7
Romania	1,296	1,363	53	196	1,612	744	0.0	24.4
Russian Federation	83,405	37,194	1,178	272	38,644	20,050	1.2	-53.7
Slovakia	1,683	1,548	46	46	1,640	699	0.0	-2.6
Ukraine	4,249	3,465	156	284	3,905	1,869	0.1	-8.1
Uzbekistan	425	499	55	19	573	377	0.0	34.8

Source: Statistics and Tourism Information Department, MOT

International Tourist Arrivals to Cambodia by Country of Residence in January - September 2015

(by all mean of transportations)

Regions Country of Residence	2014	2015			Total	Female	Share	Change
		Purpose of Visit					(%)	(%)
		Holiday	Business	Others			2015*	2015*/14
Grand Total	3,200,058	3,018,790	218,621	109,459	3,346,870	1,450,250	100.0	4.6
Southern Europe	53,265	57,951	1,684	1,031	60,666	26,284	1.8	13.9
Croatia	537	682	26	146	854	342	0.0	59.0
Greece	908	1,071	50	41	1,162	454	0.0	28.0
Italy	21,612	21,559	648	235	22,442	9,269	0.7	3.8
Malta		302	8	20	330	127	0.0	
Portugal	2,998	3,732	136	89	3,957	1,811	0.1	32.0
Serbia	532	462	18	106	586	255	0.0	10.2
Slovenia	699	775	33	44	852	370	0.0	21.9
Spain	22,654	25,582	398	174	26,154	12,184	0.8	15.4
Turkey	3,325	3,786	367	176	4,329	1,472	0.1	30.2
Other Europe	1,982	1,807	291	705	2,803	1,242	0.1	41.4
Americas	198,432	208,583	9,019	6,518	224,120	102,161	6.7	12.9
North America	178,242	186,041	8,438	5,477	199,956	90,625	6.0	12.2
Canada	37,525	38,330	1,747	499	40,576	18,499	1.2	8.1
Mexico	3,877	4,907	47	71	5,025	2,770	0.2	29.6
United States	136,840	142,804	6,644	4,907	154,355	69,356	4.6	12.8
Central America	275	362	26	104	492	217	0.0	
Costa Rica	275	285	12	30	327	155	0.0	18.9
Honduras		33	8	40	81	33	0.0	
Jamaica		44	6	34	84	29	0.0	
South America	18,563	20,961	327	352	21,640	10,519	0.6	16.6
Argentina	4,606	5,744	39	35	5,818	2,792	0.2	26.3
Brazil	6,729	7,133	114	104	7,351	3,512	0.2	9.2
Chile	4,173	3,768	29	41	3,838	1,938	0.1	-8.0
Colombia	1,537	2,018	60	45	2,123	1,066	0.1	38.1
Ecuador	264	382	18	16	416	210	0.0	57.6
Peru	606	601	17	38	656	333	0.0	8.3
Uruguay	648	790	12	35	837	391	0.0	29.2
Venezuela		525	38	38	601	277	0.0	
Other Americas	1,352	1,219	228	585	2,032	800	0.1	50.3
Africa	4,063	4,782	856	615	6,253	2,364	0.2	53.9
North Africa	60	499	45	78	622	241	0.0	
Morocco		328	28	24	380	162	0.0	
Sudan	60	66	7	34	107	34	0.0	78.3
Tunisia		105	10	20	135	45	0.0	
Subsaharan Africa	3,717	4,009	756	411	5,176	1,958	0.2	39.3
Cameroon	104	127	11	26	164	48	0.0	57.7
Congo	38	47	5	24	76	20	0.0	100.0
Ghana	72	47	10	9	66	13	0.0	-8.3
Kenya	194	190	15	21	226	108	0.0	16.5
Liberia	22	31	6	9	46	10	0.0	109.1
Nigeria	443	344	424	34	802	86	0.0	81.0
South Africa	2,800	3,055	260	240	3,555	1,601	0.1	27.0
Tanzania		42	6	19	67	18	0.0	
Uganda	44	72	7	12	91	23	0.0	106.8
Zimbabwe		54	12	17	83	31	0.0	
Other Africa	286	274	55	126	455	165	0.0	59.1
Middle East	8,665	9,518	430	345	10,293	3,476	0.3	18.8
Egypt	240	365	58	25	448	117	0.0	86.7
Iran	399	324	35	10	369	120	0.0	-7.5
Iraq	77	86	5	14	105	21	0.0	36.4
Israel	6,467	6,448	198	27	6,673	2,773	0.2	3.2
Jordan		221	28	18	267	51	0.0	
Kuwait	742	740	6	46	792	43	0.0	6.7
Oman	123	146	4	20	170	26	0.0	38.2
Palestine	55	38	6	11	55	8	0.0	0.0
Qatar	49	69	6	19	94	28	0.0	91.8
Saudi Arabia	115	219	9	25	253	19	0.0	120.0
Syria		177	8	14	199	31	0.0	
United Arab Emirates	86	266	26	24	316	86	0.0	267.4
Yemen	115	179	7	22	208	51	0.0	80.9
Other Middle East	197	240	34	70	344	102	0.0	74.6

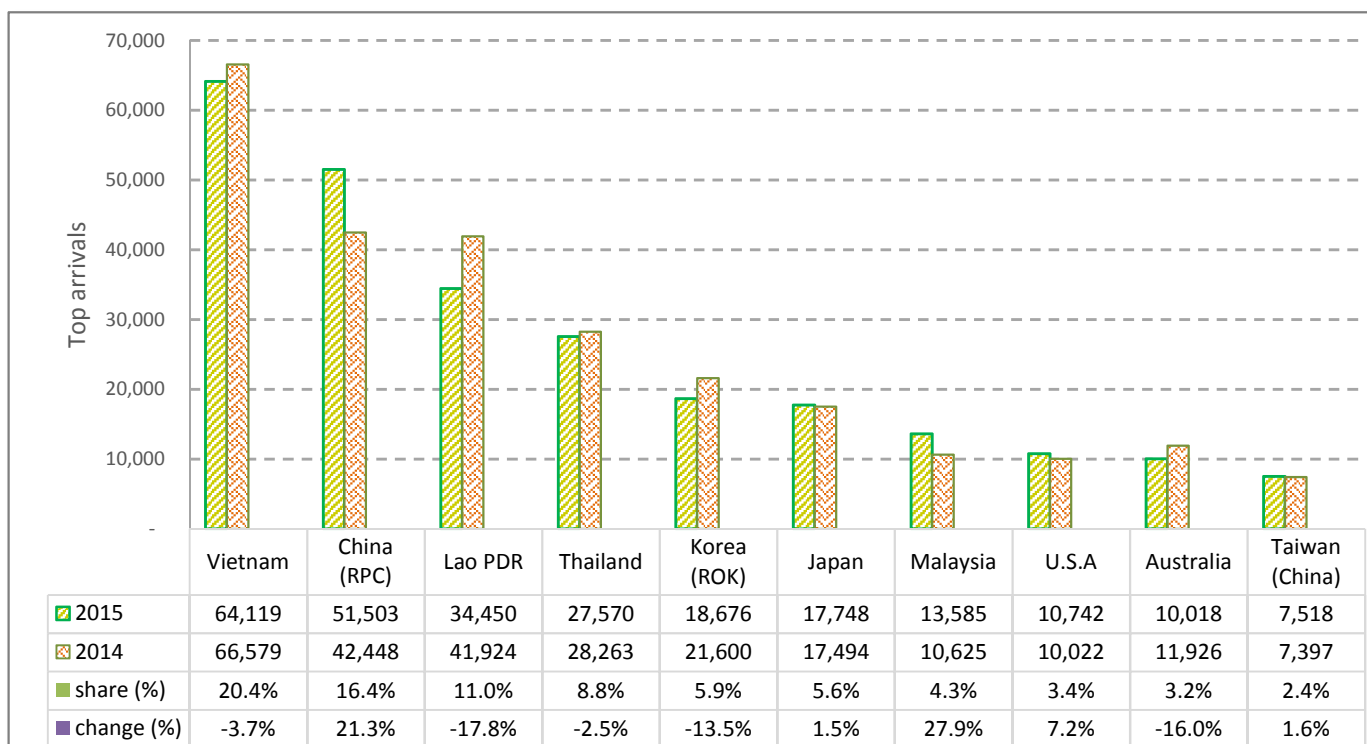
CAMBODIA: TOURISM STATISTICS REPORT IN SEPTEMBER 2015

I. INBOUND TOURISM

1. International tourist arrivals in September 2015

	Inbound tourism		share (%)		change (%)
	2014	2015	2014	2015	2015*/14
Air	148,464	165,852	47.7	52.7	11.7
Phnom Penh Int'l Airport (PNH)	66,614	78,669	21.4	25.0	18.1
Siem Reap Int'l Airport (REP)	81,850	87,183	26.3	27.7	6.5
Land and Water ways	162,924	148,607	52.3	47.3	-8.8
Land	155,563	141,895	50.0	45.1	-8.8
Waterway	7,361	6,712	2.4	2.1	-8.8
Total	311,388	314,459	100.0	100.0	1.0

2. Top ten markets arrivals in September 2015



II. OUTBOUND TOURISM

Outbound tourism in September 2015

	Outbound tourism		change (%)
	2014	2015	2015*/14
Cambodian Outbound Tourists	86,031	106,196	23.4
International Tourists Departure	279,932	261,036	-6.8

III. INTERNAL TOURISM

Foreign visitor arrivals to the regions in September 2015

	Arrivals		share (%)		change (%)
	2014	2015	2014	2015	2015*/14
Phnom Penh & Surrounding	158,786	193,953	44.6	55.0	22.1
Siem Reap Angkor	152,602	120,506	42.9	34.2	-21.0
Coastal Areas	40,904	34,719	11.5	9.8	-15.1
Eco-tourism Areas	3,364	3,356	0.9	1.0	-0.2
Total	355,656	352,534	100.0	100.0	-0.9

International Tourist Arrivals to Cambodia by Country of Residence in September 2015

(by all mean of transportations)

Regions Country of Residence	2014	2015			Total	Female	Share	Change
		Purpose of Visit					(%)	(%)
		Holiday	Business	Others			2015*	2015*/14
Grand Total	311,388	278,014	23,781	12,664	314,459	114,482	100.0	1.0
Asia and the Pacific	267,039	235,256	20,524	11,314	267,094	94,782	84.9	0.0
ASEAN (Southeast Asia)	160,628	136,576	7,979	9,910	154,465	48,365	49.1	-3.8
Brunei Darussalam	48	48	3	12	63	31	0.0	31.3
Indonesia	2,594	2,003	1,035	36	3,074	815	1.0	18.5
Lao PDR	41,924	34,141	12	297	34,450	6,218	11.0	-17.8
Malaysia	10,625	12,909	641	35	13,585	4,608	4.3	27.9
Myanmar	414	572	45	22	639	233	0.2	54.3
Philippines	5,316	5,064	698	41	5,803	3,213	1.8	9.2
Singapore	4,865	4,877	261	24	5,162	1,645	1.6	6.1
Thailand	28,263	24,921	1,406	1,243	27,570	8,438	8.8	-2.5
Vietnam	66,579	52,041	3,878	8,200	64,119	23,164	20.4	-3.7
Northeast Asia	89,715	84,659	11,589	855	97,103	40,388	30.9	8.2
China	42,448	43,881	7,291	331	51,503	22,737	16.4	21.3
Hong Kong (China)	758	1,561	31	3	1,595	678	0.5	110.4
Japan	17,494	15,709	1,791	248	17,748	7,212	5.6	1.5
Korea (ROK)	21,600	17,207	1,209	260	18,676	7,027	5.9	-13.5
Macau (China)		37	1	3	41	17	0.0	
Mongolia	18	16	4	2	22	14	0.0	22.2
Taiwan (China)	7,397	6,248	1,262	8	7,518	2,703	2.4	1.6
Southern Asia	2,938	2,876	396	132	3,404	770	1.1	15.9
Afghanistan	7	4	1	3	8	3	0.0	14.3
Bangladesh	204	181	24	11	216	34	0.1	5.9
Bhutan	10	4		2	6	1	0.0	-40.0
India	2,325	2,413	278	103	2,794	671	0.9	20.2
Nepal	143	110	15	4	129	27	0.0	-9.8
Pakistan	93	78	25	5	108	8	0.0	16.1
Sri Lanka	156	86	53	4	143	26	0.0	-8.3
Oceania	13,406	10,798	536	222	11,556	5,051	3.7	-13.8
Australia	11,926	9,366	445	207	10,018	4,371	3.2	-16.0
Fiji	13	13	7	1	21	6	0.0	61.5
New Zealand	1,467	1,419	84	14	1,517	674	0.5	3.4
Other Asia & the Pacific	352	347	24	195	566	208	0.2	60.8
Europe	29,370	27,869	2,173	675	30,717	12,618	9.8	4.6
Northern Europe	8,055	8,175	721	111	9,007	3,446	2.9	11.8
Denmark	299	318	35	13	366	136	0.1	22.4
Finland	275	178	24	8	210	64	0.1	-23.6
Iceland	64	16	2	2	20	8	0.0	-68.8
Ireland	375	582	30	7	619	246	0.2	65.1
Norway	326	302	24	6	332	113	0.1	1.8
Sweden	485	443	45	11	499	183	0.2	2.9
United Kingdom	6,231	6,336	561	64	6,961	2,696	2.2	11.7
Western Europe	11,558	11,331	1,039	280	12,650	5,010	4.0	9.4
Austria	327	408	25	6	439	173	0.1	34.3
Belgium	605	665	51	32	748	305	0.2	23.6
France	5,001	4,453	614	136	5,203	1,999	1.7	4.0
Germany	3,955	3,958	205	66	4,229	1,739	1.3	6.9
Luxembourg	14	18	1	2	21	2	0.0	50.0
Monaco	14	2		2	4	1	0.0	-71.4
Netherlands	1,034	1,165	89	17	1,271	495	0.4	22.9
Switzerland	608	662	54	19	735	296	0.2	20.9
Central / Eastern Europe	4,837	2,874	231	71	3,176	1,568	1.0	-34.3
Bulgaria	40	56	6	1	63	22	0.0	57.5
Czech Republic	114	144	8	20	172	75	0.1	50.9
Estonia	56	26	1	3	30	14	0.0	-46.4
Hungary	179	97	9	8	114	45	0.0	-36.3
Kazakhstan	100	40	16	5	61	28	0.0	-39.0
Kyrgyzstan		4	1	3	8	1	0.0	
Latvia		36	1	2	39	19	0.0	
Lithuania	43	43	4	1	48	27	0.0	11.6
Poland	443	441	15	8	464	238	0.1	4.7
Romania	79	65	1	1	67	21	0.0	-15.2
Russian Federation	3,475	1,624	146	11	1,781	926	0.6	-48.7
Slovakia	80	50	4	3	57	22	0.0	-28.8
Ukraine	194	223	16	1	240	110	0.1	23.7
Uzbekistan	34	25	3	4	32	20	0.0	-5.9

Source: Statistics and Tourism Information Department, MOT

International Tourist Arrivals to Cambodia by Country of Residence in September 2015

(by all mean of transportations)

Regions Country of Residence	2014	2015			Total	Female	Share	Change
		Purpose of Visit					(%)	(%)
		Holiday	Business	Others			2015*	2015*/14
Grand Total	311,388	278,014	23,781	12,664	314,459	114,482	100.0	1.0
Southern Europe	4,721	5,252	167	71	5,490	2,407	1.7	16.3
Croatia	32	55	2	1	58	30	0.0	81.3
Greece	34	38	8	6	52	14	0.0	52.9
Italy	1,154	1,093	65	16	1,174	445	0.4	1.7
Malta		23	1	5	29	10	0.0	
Portugal	263	314	13	3	330	151	0.1	25.5
Serbia	63	22	1	1	24	9	0.0	-61.9
Slovenia	29	84	5	9	98	39	0.0	237.9
Spain	2,877	3,183	39	11	3,233	1,529	1.0	12.4
Turkey	269	440	33	19	492	180	0.2	82.9
Other Europe	199	237	15	142	394	187	0.1	98.0
Americas	13,774	13,393	932	573	14,898	6,490	4.7	8.2
North America	12,509	12,018	884	454	13,356	5,818	4.2	6.8
Canada	2,070	1,870	182	35	2,087	897	0.7	0.8
Mexico	417	520	6	1	527	508	0.2	26.4
United States	10,022	9,628	696	418	10,742	4,413	3.4	7.2
Central America	43	30	2	10	42	14	0.0	
Costa Rica	43	19	2	5	26	9	0.0	-39.5
Honduras		5		2	7	3	0.0	
Jamaica		6		3	9	2	0.0	
South America	1,059	1,151	37	27	1,215	553	0.4	14.7
Argentina	179	260	3	7	270	116	0.1	50.8
Brazil	380	338	15	3	356	152	0.1	-6.3
Chile	235	259	3	2	264	133	0.1	12.3
Colombia	140	161	9	3	173	87	0.1	23.6
Ecuador	50	24	1	1	26	12	0.0	-48.0
Peru	55	49	3	1	53	24	0.0	-3.6
Uruguay	20	25	1	6	32	10	0.0	60.0
Venezuela		35	2	4	41	19	0.0	
Other Americas	163	194	9	82	285	105	0.1	74.8
Africa	377	451	97	49	597	193	0.2	58.4
North Africa	7	44	3	13	60	17	0.0	757.1
Morocco		29	1	8	38	14	0.0	
Sudan	7	5	1	2	8	1	0.0	14.3
Tunisia		10	1	3	14	2	0.0	
Subsaharan Africa	340	365	92	21	478	155	0.2	40.6
Cameroon	5	4	1	1	6	3	0.0	20.0
Congo	6	9	1	3	13	2	0.0	116.7
Ghana	2	5	1	1	7	1	0.0	250.0
Kenya	27	14	3	2	19	6	0.0	-29.6
Liberia	7	1	1	1	3	1	0.0	
Nigeria	59	35	52	2	89	5	0.0	50.8
South Africa	228	267	30	2	299	124	0.1	31.1
Tanzania		9	1	3	13	5	0.0	
Uganda	6	16	1	4	21	6	0.0	250.0
Zimbabwe		5	1	2	8	2	0.0	
Other Africa	30	42	2	15	59	21	0.0	96.7
Middle East	828	1,045	55	53	1,153	399	0.4	39.3
Egypt	26	54	10	12	76	29	0.0	192.3
Iran	38	23	12	1	36	8	0.0	-5.3
Iraq	11	17		3	20	7	0.0	81.8
Israel	558	691	26	5	722	296	0.2	29.4
Jordan		23	2	3	28		0.0	
Kuwait	99	48	1	4	53	7	0.0	-46.5
Oman	10	8		2	10	3	0.0	0.0
Palestine	4	6		1	7	1	0.0	75.0
Qatar	28	4	1	2	7	1	0.0	
Saudi Arabia	6	11		1	12	1	0.0	100.0
Syria		54		4	58	2	0.0	
United Arab Emirates	19	11	1	3	15	1	0.0	-21.1
Yemen	6	58	1	3	62	26	0.0	933.3
Other Middle East	23	37	1	9	47	17	0.0	104.3