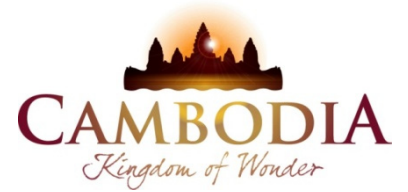




KINGDOM OF CAMBODIA
NATION RELIGION KING



TOURISM STATISTICS REPORT

October 2015

MINISTRY OF TOURISM

Statistics and Tourism Information Department

No. A3, Street 169, Sangkat Veal Vong, Khan 7 Makara, Phnom Penh, Cambodia.

Fax: +855 23 885003

E-mail: kong@mot.gov.kh

Web site: www.mot.gov.kh

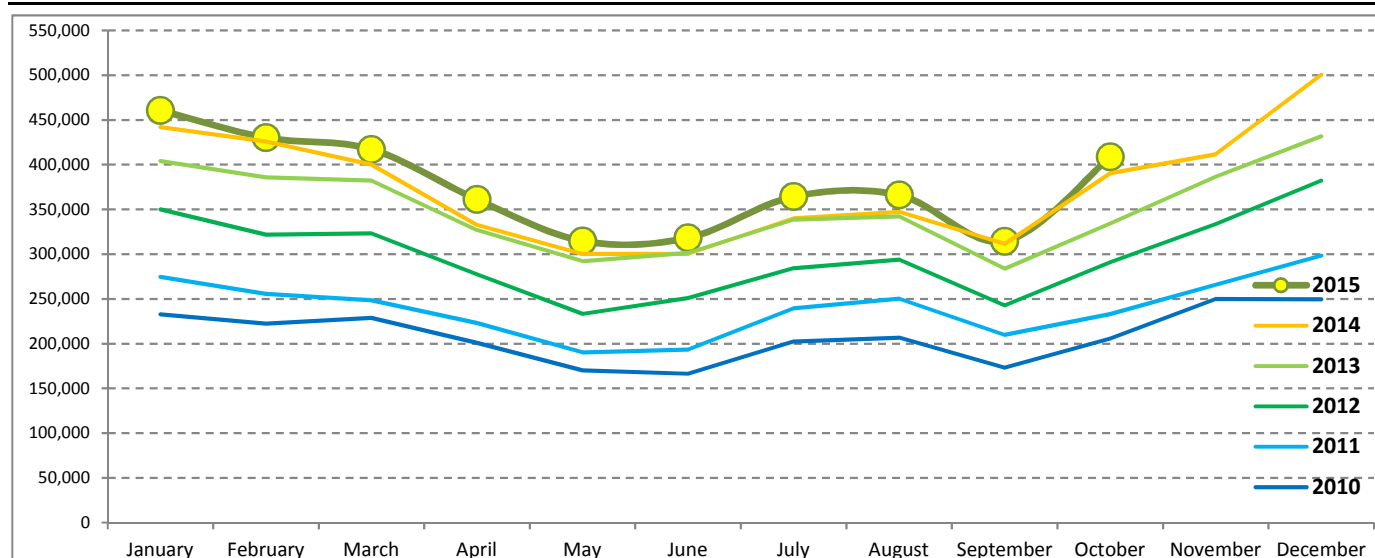
Tourism Highlights

International Tourist Arrivals, Average Length of Stay, Hotels Occupancy & Tourism Receipts 1993 - 2014

Years	Int'l Tourist Arrivals		Average Length	Hotels Occupancy	Tourism Receipts
	Number	Change (%)	of Stay (Days)	(%)	(Million US\$)
1993	118,183	-	N/A	N/A	N/A
1994	176,617	49.4	N/A	N/A	N/A
1995	219,680	24.4	8.00	37.00	100
1996	260,489	18.6	7.50	40.00	118
1997	218,843	-16.0	6.40	30.00	103
1998	286,524	30.9	5.20	40.00	166
1999	367,743	28.3	5.50	44.00	190
2000	466,365	26.8	5.50	45.00	228
2001	604,919	29.7	5.50	48.00	304
2002	786,524	30.0	5.80	50.00	379
2003	701,014	-10.9	5.50	50.00	347
2004	1,055,202	50.5	6.30	52.00	578
2005	1,421,615	34.7	6.30	52.00	832
2006	1,700,041	19.6	6.50	54.79	1,049
2007	2,015,128	18.5	6.50	54.79	1,400
2008	2,125,465	5.5	6.65	62.68	1,595
2009	2,161,577	1.7	6.45	63.57	1,561
2010	2,508,289	16.0	6.45	65.74	1,786
2011	2,881,862	14.9	6.50	66.15	1,912
2012	3,584,307	24.4	6.30	68.49	2,210
2013	4,210,165	17.5	6.75	69.53	2,547
2014	4,502,775	7.0	6.50	67.55	2,736

International Tourist Arrivals to Cambodia

Months	2010	2011	2012	2013	2014	2015	Change (%)				
							11/10	12/11	13/12	14/13	15*/14
Q1	683,692	778,467	995,210	1,172,072	1,267,922	1,307,836	13.9	27.8	17.8	8.2	3.1
January	232,590	274,471	350,257	404,106	442,045	460,577	18.0	27.6	15.4	9.4	4.2
February	222,354	255,499	321,870	385,760	425,801	430,207	14.9	26.0	19.8	10.4	1.0
March	228,748	248,497	323,083	382,206	400,076	417,052	8.6	30.0	18.3	4.7	4.2
Q2	537,464	606,562	761,442	920,527	933,446	994,154	12.9	25.5	20.9	1.4	6.5
April	200,965	223,032	277,304	327,000	332,690	361,139	11.0	24.3	17.9	1.7	8.6
May	170,164	190,258	233,220	292,115	300,302	314,748	11.8	22.6	25.3	2.8	4.8
June	166,335	193,272	250,918	301,412	300,454	318,267	16.2	29.8	20.1	-0.3	5.9
Q3	582,024	699,760	820,888	964,612	998,690	1,044,880	20.2	17.3	17.5	3.5	4.6
July	202,349	239,527	284,282	338,761	340,091	364,325	18.4	18.7	19.2	0.4	7.1
August	206,563	250,429	293,859	342,064	347,211	366,096	21.2	17.3	16.4	1.5	5.4
September	173,112	209,804	242,747	283,787	311,388	314,459	21.2	15.7	16.9	9.7	1.0
Q4	705,109	797,073	1,006,767	1,152,954	1,302,717	408,922	13.0	26.3	14.5	13.0	
October	205,515	233,190	290,959	334,410	390,637	408,922	13.5	24.8	14.9	16.8	
November	249,892	265,539	333,482	386,737	411,501		6.3	25.6	16.0	6.4	
December	249,702	298,344	382,326	431,807	500,579		19.5	28.1	12.9	15.9	
Total	2,508,289	2,881,862	3,584,307	4,210,165	4,502,775	3,755,792	14.9	24.4	17.5	7.0	4.6



Source: Statistics and Tourism Information Department, MOT

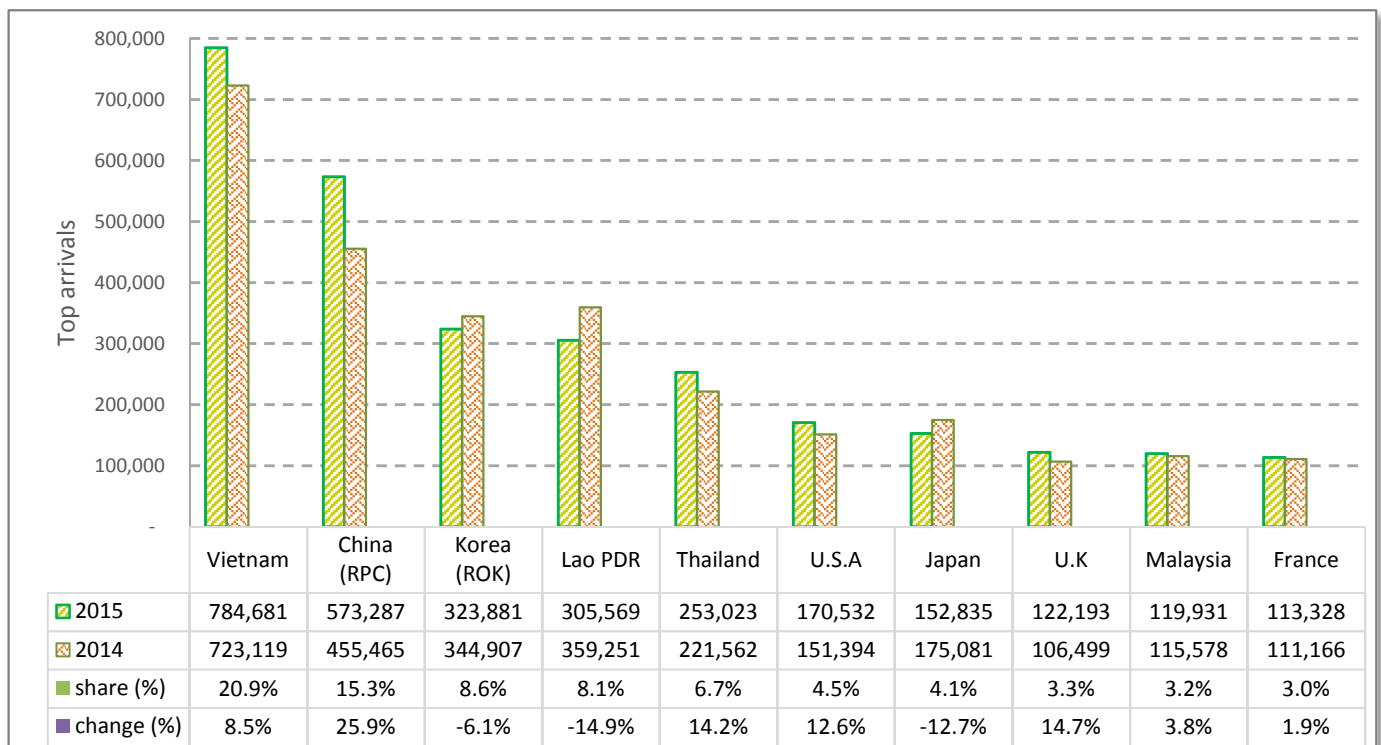
CAMBODIA: TOURISM STATISTICS REPORT IN THE FIRST TEN MONTHS 2015

I. INBOUND TOURISM

1. International tourist arrivals in January - October 2015

	Inbound tourism		share (%)		change (%)
	2014	2015	2014	2015	2015*/14
Air	1,810,752	1,986,266	50.4	52.9	9.7
Phnom Penh Int'l Airport (PNH)	738,117	864,205	20.6	23.0	17.1
Siem Reap Int'l Airport (REP)	1,072,635	1,122,061	29.9	29.9	4.6
Land and Water ways	1,779,943	1,769,526	49.6	47.1	-0.6
Land	1,706,118	1,656,315	47.5	44.1	-2.9
Waterway	73,825	113,211	2.1	3.0	53.4
Total	3,590,695	3,755,792	100.0	100.0	4.6

2. Top ten markets arrivals in January - October 2015



II. OUTBOUND TOURISM

Outbound tourism in January - October 2015

	Outbound tourism		change (%)
	2014	2015	2015*/14
Cambodian Outbound Tourists	789,512	985,739	24.9
International Tourists Departure	3,451,436	3,488,849	1.1

III. INTERNAL TOURISM

Foreign visitor arrivals to the regions in January - October 2015

	Arrivals		share (%)		change (%)
	2014	2015	2014	2015	2015*/14
Phnom Penh & Surrounding	1,701,777	2,054,658	41.4	47.7	20.7
Siem Reap Angkor	1,888,918	1,701,134	46.0	39.5	-9.9
Coastal Areas	469,880	503,179	11.4	11.7	7.1
Eco-tourism Areas	48,426	50,544	1.2	1.2	4.4
Total	4,109,001	4,309,515	100.0	100.0	4.9

International Tourist Arrivals to Cambodia by Country of Residence in January - October 2015

(by all mean of transportations)

Regions Country of Residence	2014	2015			Total	Female	Share	Change
		Purpose of Visit					(%)	(%)
		Holiday	Business	Others			2015*	2015*/14
Grand Total	3,590,695	3,379,663	249,680	126,449	3,755,792	1,585,169	100.0	4.6
Asia and the Pacific	2,797,450	2,614,887	213,895	108,387	2,937,169	1,224,253	78.2	5.0
ASEAN (Southeast Asia)	1,581,925	1,449,616	79,698	93,946	1,623,260	665,749	43.2	2.6
Brunei Darussalam	745	542	21	102	665	292	0.0	-10.7
Indonesia	28,963	22,104	10,615	1,380	34,099	9,100	0.9	17.7
Lao PDR	359,251	298,408	135	7,026	305,569	137,629	8.1	-14.9
Malaysia	115,578	112,173	7,313	445	119,931	37,856	3.2	3.8
Myanmar	4,700	6,351	454	386	7,191	3,070	0.2	53.0
Philippines	77,510	57,336	8,639	1,902	67,877	37,727	1.8	-12.4
Singapore	50,497	47,512	2,360	352	50,224	15,466	1.3	-0.5
Thailand	221,562	225,228	14,082	13,713	253,023	97,056	6.7	14.2
Vietnam	723,119	679,962	36,079	68,640	784,681	327,553	20.9	8.5
Northeast Asia	1,063,011	1,018,903	123,793	9,387	1,152,083	493,128	30.7	8.4
China	455,465	491,824	77,398	4,065	573,287	257,518	15.3	25.9
Hong Kong (China)	6,568	10,075	155	34	10,264	4,733	0.3	56.3
Japan	175,081	132,027	18,240	2,568	152,835	58,681	4.1	-12.7
Korea (ROK)	344,907	307,358	13,955	2,568	323,881	135,634	8.6	-6.1
Macau (China)		309	8	16	333	132	0.0	
Mongolia	314	316	27	24	367	204	0.0	16.9
Taiwan (China)	80,676	76,994	14,010	112	91,116	36,226	2.4	12.9
Southern Asia	28,285	29,075	4,063	2,103	35,241	9,373	0.9	24.6
Afghanistan	199	58	8	23	89	22	0.0	-55.3
Bangladesh	1,650	1,274	311	158	1,743	271	0.0	5.6
Bhutan	84	128	6	20	154	63	0.0	83.3
India	22,495	24,581	2,624	1,489	28,694	8,011	0.8	27.6
Nepal	1,366	1,331	249	193	1,773	443	0.0	29.8
Pakistan	1,000	755	337	120	1,212	219	0.0	21.2
Sri Lanka	1,491	948	528	100	1,576	344	0.0	5.7
Oceania	121,207	114,269	5,864	1,792	121,925	54,078	3.2	0.6
Australia	104,747	97,344	4,954	1,587	103,885	46,115	2.8	-0.8
Fiji	113	101	40	18	159	51	0.0	40.7
New Zealand	16,347	16,824	870	187	17,881	7,912	0.5	9.4
Other Asia & the Pacific	3,022	3,024	477	1,159	4,660	1,925	0.1	54.2
Europe	560,304	518,742	24,184	9,679	552,605	241,633	14.7	-1.4
Northern Europe	150,710	155,232	9,213	2,075	166,520	69,720	4.4	10.5
Denmark	9,848	8,878	317	174	9,369	3,976	0.2	-4.9
Finland	5,248	4,785	253	111	5,149	1,972	0.1	-1.9
Iceland	663	576	12	23	611	230	0.0	-7.8
Ireland	7,927	8,885	314	99	9,298	4,116	0.2	17.3
Norway	7,708	7,298	200	74	7,572	3,310	0.2	-1.8
Sweden	12,817	11,682	451	195	12,328	4,961	0.3	-3.8
United Kingdom	106,499	113,128	7,666	1,399	122,193	51,155	3.3	14.7
Western Europe	230,440	226,985	10,453	4,026	241,464	104,355	6.4	4.8
Austria	6,767	7,437	210	85	7,732	3,235	0.2	14.3
Belgium	12,131	12,298	540	302	13,140	5,483	0.3	8.3
France	111,166	105,102	6,143	2,083	113,328	49,989	3.0	1.9
Germany	63,555	64,673	1,853	945	67,471	28,634	1.8	6.2
Luxembourg	399	493	9	16	518	210	0.0	29.8
Monaco	92	51	6	14	71	25	0.0	-22.8
Netherlands	21,387	21,275	1,081	404	22,760	9,778	0.6	6.4
Switzerland	14,943	15,656	611	177	16,444	7,001	0.4	10.0
Central / Eastern Europe	118,083	70,596	2,292	1,581	74,469	37,088	2.0	-36.9
Bulgaria	842	1,095	31	124	1,250	549	0.0	48.5
Czech Republic	4,021	4,081	67	88	4,236	1,771	0.1	5.3
Estonia	1,428	1,257	34	26	1,317	568	0.0	-7.8
Hungary	2,458	2,956	107	98	3,161	1,377	0.1	28.6
Kazakhstan	2,251	1,614	213	34	1,861	973	0.0	-17.3
Kyrgyzstan		100	19	15	134	56	0.0	
Latvia		642	21	41	704	319	0.0	
Lithuania	1,192	1,305	24	43	1,372	675	0.0	15.1
Poland	8,897	9,595	113	220	9,928	4,887	0.3	11.6
Romania	1,438	1,525	61	198	1,784	848	0.0	24.1
Russian Federation	88,713	40,463	1,306	327	42,096	21,879	1.1	-52.5
Slovakia	1,846	1,673	50	53	1,776	740	0.0	-3.8
Ukraine	4,537	3,764	179	289	4,232	2,044	0.1	-6.7
Uzbekistan	460	526	67	25	618	402	0.0	34.3

Source: Statistics and Tourism Information Department, MOT

International Tourist Arrivals to Cambodia by Country of Residence in January - October 2015

(by all mean of transportations)

Regions Country of Residence	2014	2015			Total	Female	Share	Change
		Purpose of Visit					(%)	(%)
		Holiday	Business	Others			2015*	2015*/14
Grand Total	3,590,695	3,379,663	249,680	126,449	3,755,792	1,585,169	100.0	4.6
Southern Europe	58,657	63,474	1,924	1,154	66,552	28,853	1.8	13.5
Croatia	565	749	27	174	950	374	0.0	68.1
Greece	971	1,129	56	43	1,228	477	0.0	26.5
Italy	23,154	23,146	758	273	24,177	9,954	0.6	4.4
Malta		355	9	22	386	152	0.0	
Portugal	3,357	4,161	150	92	4,403	2,010	0.1	31.2
Serbia	568	487	22	113	622	263	0.0	9.5
Slovenia	764	861	38	45	944	411	0.0	23.6
Spain	25,472	28,631	457	202	29,290	13,632	0.8	15.0
Turkey	3,806	3,955	407	190	4,552	1,580	0.1	19.6
Other Europe	2,414	2,455	302	843	3,600	1,617	0.1	49.1
Americas	218,689	230,172	10,185	7,315	247,672	112,801	6.6	13.3
North America	196,638	205,057	9,565	6,100	220,722	99,987	5.9	12.2
Canada	40,893	42,007	1,996	566	44,569	20,325	1.2	9.0
Mexico	4,351	5,480	51	90	5,621	3,056	0.1	29.2
United States	151,394	157,570	7,518	5,444	170,532	76,606	4.5	12.6
Central America	312	427	29	135	591	245	0.0	
Costa Rica	312	321	13	32	366	171	0.0	17.3
Honduras		36	9	58	103	39	0.0	
Jamaica		70	7	45	122	35	0.0	
South America	20,083	23,017	355	397	23,769	11,535	0.6	18.4
Argentina	4,913	6,192	43	39	6,274	3,007	0.2	27.7
Brazil	7,314	7,867	123	119	8,109	3,874	0.2	10.9
Chile	4,478	4,143	31	43	4,217	2,126	0.1	-5.8
Colombia	1,736	2,249	66	55	2,370	1,181	0.1	36.5
Ecuador	291	412	20	21	453	224	0.0	55.7
Peru	682	754	19	42	815	407	0.0	19.5
Uruguay	669	856	13	37	906	430	0.0	35.4
Venezuela		544	40	41	625	286	0.0	
Other Americas	1,656	1,671	236	683	2,590	1,034	0.1	56.4
Africa	4,553	5,352	941	671	6,964	2,625	0.2	53.0
North Africa	65	544	52	81	677	258	0.0	
Morocco		348	34	25	407	171	0.0	
Sudan	65	72	7	35	114	37	0.0	75.4
Tunisia		124	11	21	156	50	0.0	
Subsaharan Africa	4,153	4,456	833	439	5,728	2,166	0.2	37.9
Cameroon	115	134	12	30	176	50	0.0	53.0
Congo	41	57	5	25	87	22	0.0	112.2
Ghana	77	58	11	11	80	17	0.0	3.9
Kenya	207	207	15	26	248	117	0.0	19.8
Liberia	23	32	6	10	48	11	0.0	108.7
Nigeria	506	391	459	42	892	92	0.0	76.3
South Africa	3,136	3,388	296	242	3,926	1,774	0.1	25.2
Tanzania		48	7	20	75	20	0.0	
Uganda	48	84	7	13	104	29	0.0	116.7
Zimbabwe		57	15	20	92	34	0.0	
Other Africa	335	352	56	151	559	201	0.0	66.9
Middle East	9,699	10,510	475	397	11,382	3,857	0.3	17.4
Egypt	271	399	59	27	485	132	0.0	79.0
Iran	501	350	37	11	398	131	0.0	-20.6
Iraq	89	93	12	20	125	25	0.0	40.4
Israel	7,220	7,100	222	38	7,360	3,049	0.2	1.9
Jordan		244	33	20	297	55	0.0	
Kuwait	800	790	7	47	844	45	0.0	5.5
Oman	129	153	4	20	177	27	0.0	37.2
Palestine	57	41	7	13	61	9	0.0	7.0
Qatar	52	74	6	22	102	30	0.0	96.2
Saudi Arabia	136	227	10	29	266	20	0.0	95.6
Syria		200	8	14	222	35	0.0	
United Arab Emirates	90	287	27	25	339	87	0.0	276.7
Yemen	118	238	7	23	268	74	0.0	127.1
Other Middle East	236	314	36	88	438	138	0.0	85.6

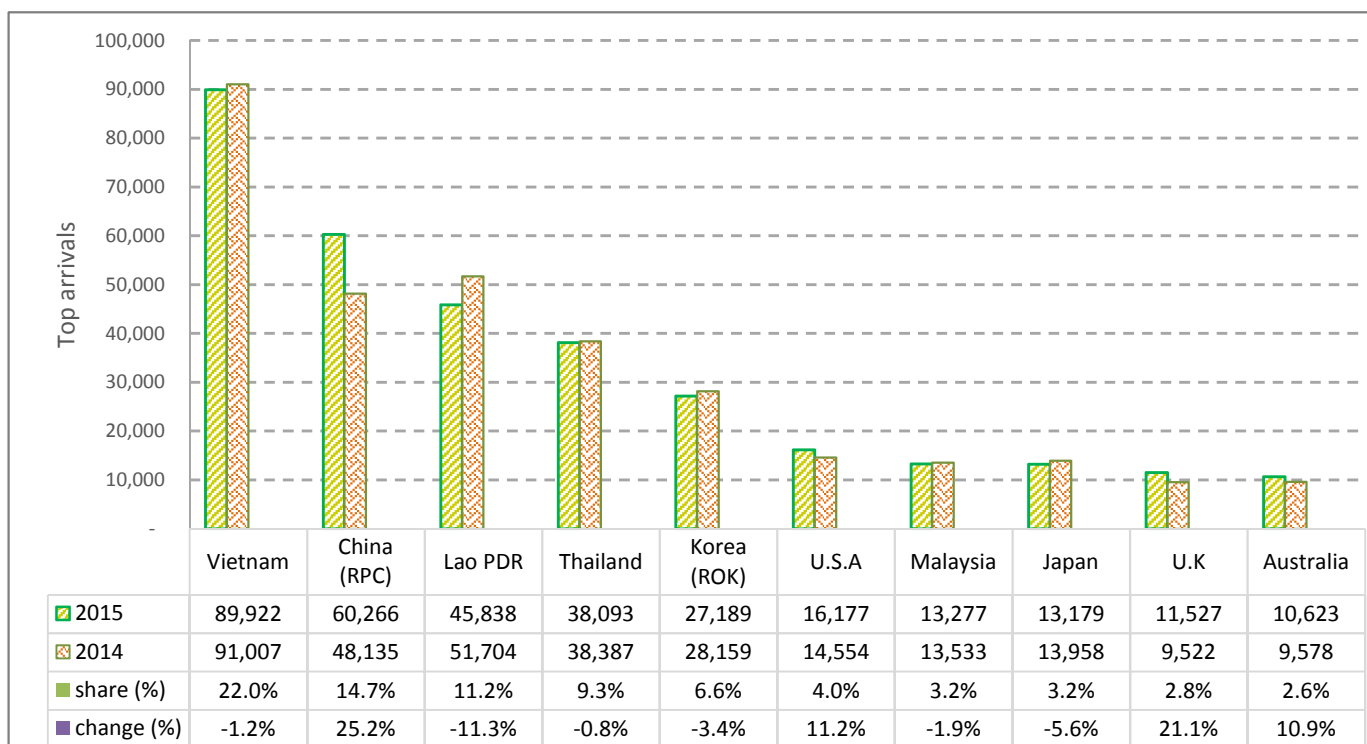
CAMBODIA: TOURISM STATISTICS REPORT IN OCTOBER 2015

I. INBOUND TOURISM

1. International tourist arrivals in October 2015

	Inbound tourism		share (%)		change (%)
	2014	2015	2014	2015	2015*/14
Air	176,096	191,602	45.1	46.9	8.8
Phnom Penh Int'l Airport (PNH)	75,375	87,099	19.3	21.3	15.6
Siem Reap Int'l Airport (REP)	100,721	104,503	25.8	25.6	3.8
Land and Water ways	214,541	217,320	54.9	53.1	1.3
Land	206,747	205,223	52.9	50.2	-0.7
Waterway	7,794	12,097	2.0	3.0	55.2
Total	390,637	408,922	100.0	100.0	4.7

2. Top ten markets arrivals in October 2015



II. OUTBOUND TOURISM

Outbound tourism in October 2015

	Outbound tourism		change (%)
	2014	2015	2015*/14
Cambodian Outbound Tourists	81,933	121,502	48.3
International Tourists Departure	307,931	297,967	-3.2

III. INTERNAL TOURISM

Foreign visitor arrivals to the regions in October 2015

	Arrivals		share (%)		change (%)
	2014	2015	2014	2015	2015*/14
Phnom Penh & Surrounding	242,900	254,714	55.7	57.1	4.9
Siem Reap Angkor	147,737	154,208	33.9	34.6	4.4
Coastal Areas	42,403	32,780	9.7	7.4	-22.7
Eco-tourism Areas	3,300	4,083	0.8	0.9	23.7
Total	436,340	445,785	100.0	100.0	2.2

International Tourist Arrivals to Cambodia by Country of Residence in October 2015

(by all mean of transportations)

Regions Country of Residence	2014	2015			Total	Female	Share	Change
		Purpose of Visit					(%)	(%)
		Holiday	Business	Others			2015*	2015*/14
Grand Total	390,637	360,873	31,059	16,990	408,922	134,919	100.0	4.7
Asia and the Pacific	323,862	291,345	27,065	15,129	333,539	101,730	81.6	3.0
ASEAN (Southeast Asia)	209,407	181,919	9,855	12,546	204,320	49,947	50.0	-2.4
Brunei Darussalam	67	54	1	8	63	27	0.0	-6.0
Indonesia	2,924	2,461	1,155	424	4,040	851	1.0	38.2
Lao PDR	51,704	45,768	17	53	45,838	1,093	11.2	-11.3
Malaysia	13,533	12,218	907	152	13,277	3,369	3.2	-1.9
Myanmar	394	581	57	12	650	270	0.2	65.0
Philippines	5,582	4,694	1,156	1,174	7,024	3,364	1.7	25.8
Singapore	5,809	4,998	294	121	5,413	1,347	1.3	-6.8
Thailand	38,387	35,154	1,676	1,263	38,093	13,905	9.3	-0.8
Vietnam	91,007	75,991	4,592	9,339	89,922	25,721	22.0	-1.2
Northeast Asia	99,286	93,092	16,074	1,801	110,967	44,704	27.1	11.8
China	48,135	48,644	10,263	1,359	60,266	25,147	14.7	25.2
Hong Kong (China)	843	1,109	14	3	1,126	531	0.3	33.6
Japan	13,958	11,058	1,958	163	13,179	4,567	3.2	-5.6
Korea (ROK)	28,159	24,963	1,968	258	27,189	11,107	6.6	-3.4
Macau (China)		13	1	2	16	6	0.0	
Mongolia	14	31	4	1	36	22	0.0	157.1
Taiwan (China)	8,177	7,274	1,866	15	9,155	3,324	2.2	12.0
Southern Asia	3,401	3,953	423	462	4,838	1,249	1.2	42.3
Afghanistan	6	3	1	1	5	1	0.0	-16.7
Bangladesh	264	146	32	11	189	20	0.0	-28.4
Bhutan	8	7	1	2	10	5	0.0	25.0
India	2,702	3,483	254	425	4,162	1,089	1.0	54.0
Nepal	144	109	31	8	148	45	0.0	2.8
Pakistan	115	94	37	10	141	35	0.0	22.6
Sri Lanka	162	111	67	5	183	54	0.0	13.0
Oceania	11,245	11,517	695	158	12,370	5,345	3.0	10.0
Australia	9,578	9,895	589	139	10,623	4,565	2.6	10.9
Fiji	6	12	9	1	22	7	0.0	266.7
New Zealand	1,661	1,610	97	18	1,725	773	0.4	3.9
Other Asia & the Pacific	523	864	18	162	1,044	485	0.3	99.6
Europe	44,994	46,377	2,698	956	50,031	21,907	12.2	11.2
Northern Europe	12,794	14,223	887	198	15,308	6,403	3.7	19.6
Denmark	652	624	32	26	682	260	0.2	4.6
Finland	432	368	34	16	418	149	0.1	-3.2
Iceland	145	105	1	2	108	29	0.0	-25.5
Ireland	566	708	39	7	754	328	0.2	33.2
Norway	613	728	27	9	764	322	0.2	24.6
Sweden	864	955	74	26	1,055	437	0.3	22.1
United Kingdom	9,522	10,735	680	112	11,527	4,878	2.8	21.1
Western Europe	18,916	20,087	1,302	398	21,787	9,445	5.3	15.2
Austria	401	485	26	6	517	223	0.1	28.9
Belgium	902	1,030	64	24	1,118	476	0.3	23.9
France	8,889	8,902	794	225	9,921	4,266	2.4	11.6
Germany	5,515	6,328	206	85	6,619	2,941	1.6	20.0
Luxembourg	32	38	1	1	40	14	0.0	25.0
Monaco	37	10	1	2	13	3	0.0	-64.9
Netherlands	1,707	1,849	135	36	2,020	874	0.5	18.3
Switzerland	1,433	1,445	75	19	1,539	648	0.4	7.4
Central / Eastern Europe	7,460	5,896	258	99	6,253	3,115	1.5	-16.2
Bulgaria	53	73	2	5	80	36	0.0	50.9
Czech Republic	191	276	10	2	288	116	0.1	50.8
Estonia	112	77	4	1	82	35	0.0	-26.8
Hungary	190	232	28	5	265	116	0.1	39.5
Kazakhstan	137	70	18	2	90	37	0.0	-34.3
Kyrgyzstan		4	1	1	6	2	0.0	
Latvia		127	1	2	130	57	0.0	
Lithuania	103	201	4	1	206	91	0.1	100.0
Poland	738	954	15	5	974	451	0.2	32.0
Romania	142	162	8	2	172	104	0.0	21.1
Russian Federation	5,308	3,269	128	55	3,452	1,829	0.8	-35.0
Slovakia	163	125	4	7	136	41	0.0	-16.6
Ukraine	288	299	23	5	327	175	0.1	13.5
Uzbekistan	35	27	12	6	45	25	0.0	28.6

Source: Statistics and Tourism Information Department, MOT

International Tourist Arrivals to Cambodia by Country of Residence in October 2015

(by all mean of transportations)

Regions Country of Residence	2014	2015			Total	Female	Share	Change
		Purpose of Visit					(%)	(%)
		Holiday	Business	Others	2015*	2015*/14		
Grand Total	390,637	360,873	31,059	16,990	408,922	134,919	100.0	4.7
Southern Europe	5,392	5,523	240	123	5,886	2,569	1.4	9.2
Croatia	28	67	1	28	96	32	0.0	242.9
Greece	63	58	6	2	66	23	0.0	4.8
Italy	1,542	1,587	110	38	1,735	685	0.4	12.5
Malta		53	1	2	56	25	0.0	
Portugal	359	429	14	3	446	199	0.1	24.2
Serbia	36	25	4	7	36	8	0.0	0.0
Slovenia	65	86	5	1	92	41	0.0	41.5
Spain	2,818	3,049	59	28	3,136	1,448	0.8	11.3
Turkey	481	169	40	14	223	108	0.1	-53.6
Other Europe	432	648	11	138	797	375	0.2	84.5
Americas	20,257	21,589	1,166	797	23,552	10,640	5.8	16.3
North America	18,396	19,016	1,127	623	20,766	9,362	5.1	12.9
Canada	3,368	3,677	249	67	3,993	1,826	1.0	18.6
Mexico	474	573	4	19	596	286	0.1	25.7
United States	14,554	14,766	874	537	16,177	7,250	4.0	11.2
Central America	37	65	3	31	99	28	0.0	
Costa Rica	37	36	1	2	39	16	0.0	5.4
Honduras		3	1	18	22	6	0.0	
Jamaica		26	1	11	38	6	0.0	
South America	1,520	2,056	28	45	2,129	1,016	0.5	40.1
Argentina	307	448	4	4	456	215	0.1	48.5
Brazil	585	734	9	15	758	362	0.2	29.6
Chile	305	375	2	2	379	188	0.1	24.3
Colombia	199	231	6	10	247	115	0.1	24.1
Ecuador	27	30	2	5	37	14	0.0	37.0
Peru	76	153	2	4	159	74	0.0	109.2
Uruguay	21	66	1	2	69	39	0.0	228.6
Venezuela		19	2	3	24	9	0.0	
Other Americas	304	452	8	98	558	234	0.1	83.6
Africa	490	570	85	56	711	261	0.2	45.1
North Africa	5	45	7	3	55	17	0.0	1000.0
Morocco		20	6	1	27	9	0.0	
Sudan	5	6	1	1	7	3	0.0	40.0
Tunisia		19	1	1	21	5	0.0	
Subsaharan Africa	436	447	77	28	552	208	0.1	26.6
Cameroon	11	7	1	4	12	2	0.0	9.1
Congo	3	10		1	11	2	0.0	266.7
Ghana	5	11	1	2	14	4	0.0	180.0
Kenya	13	17		5	22	9	0.0	69.2
Liberia	1	1		1	2	1	0.0	
Nigeria	63	47	35	8	90	6	0.0	42.9
South Africa	336	333	36	2	371	173	0.1	10.4
Tanzania		6	1	1	8	2	0.0	
Uganda	4	12	1	1	13	6	0.0	225.0
Zimbabwe		3	3	3	9	3	0.0	
Other Africa	49	78	1	25	104	36	0.0	112.2
Middle East	1,034	992	45	52	1,089	381	0.3	5.3
Egypt	31	34	1	2	37	15	0.0	19.4
Iran	102	26	2	1	29	11	0.0	-71.6
Iraq	12	7	7	6	20	4	0.0	66.7
Israel	753	652	24	11	687	276	0.2	-8.8
Jordan		23	5	2	30	4	0.0	
Kuwait	58	50	1	1	52	2	0.0	-10.3
Oman	6	7			7	1	0.0	16.7
Palestine	2	3	1	2	6	1	0.0	200.0
Qatar	3	5		3	8	2	0.0	
Saudi Arabia	21	8	1	4	13	1	0.0	-38.1
Syria		23			23	4	0.0	
United Arab Emirates	4	21	1	1	23	1	0.0	475.0
Yemen	3	59		1	60	23	0.0	1900.0
Other Middle East	39	74	2	18	94	36	0.0	141.0