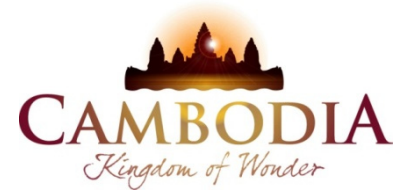




KINGDOM OF CAMBODIA  
NATION RELIGION KING



# TOURISM STATISTICS REPORT

# April 2016

**MINISTRY OF TOURISM**

Statistics and Tourism Information Department

No. A3, Street 169, Sangkat Veal Vong, Khan 7 Makara, Phnom Penh, Cambodia.

Fax: +855 23 885003

E-mail: [kong@mot.gov.kh](mailto:kong@mot.gov.kh)

Web site: [www.mot.gov.kh](http://www.mot.gov.kh)

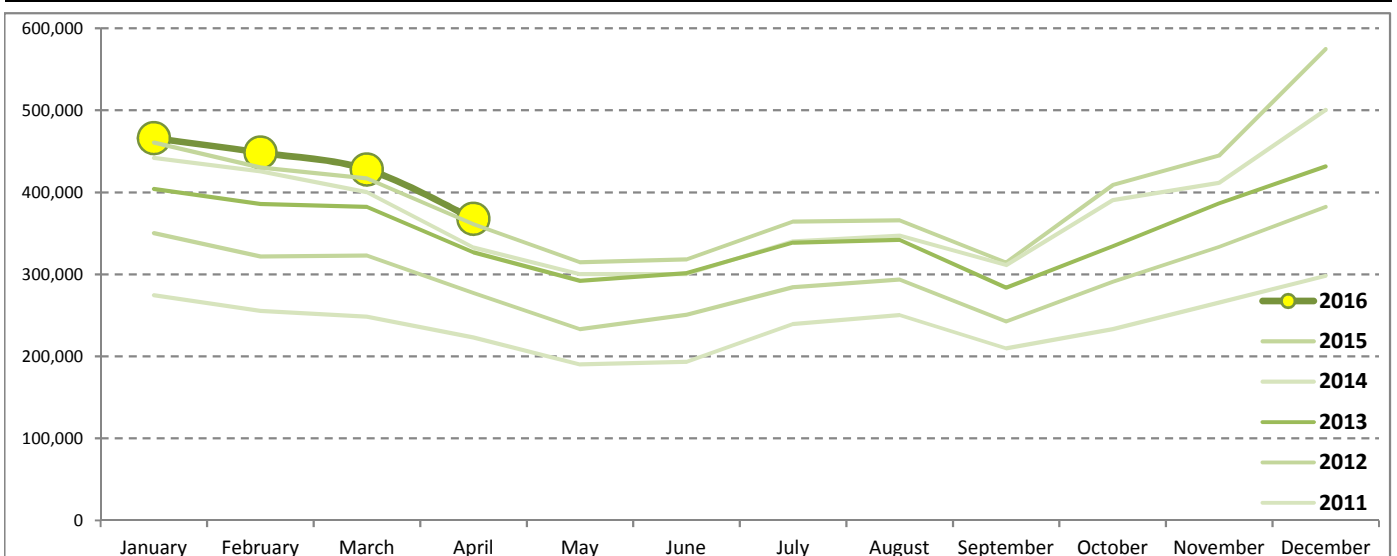
# Tourism Highlights

## International Tourist Arrivals, Average Length of Stays, Hotel Occupancy & Tourism Receipts 1993 - 2015

Years	Int'l Tourist Arrivals		Average Length	Hotel Occupancy	Tourism Receipts
	Number	Change (%)	of Stays (Days)	(%)	(Million US\$)
1993	118,183	-	N/A	N/A	N/A
1994	176,617	49.4	N/A	N/A	N/A
1995	219,680	24.4	8.00	37.0	100
1996	260,489	18.6	7.50	40.0	118
1997	218,843	-16.0	6.40	30.0	103
1998	286,524	30.9	5.20	40.0	166
1999	367,743	28.3	5.50	44.0	190
2000	466,365	26.8	5.50	45.0	228
2001	604,919	29.7	5.50	48.0	304
2002	786,524	30.0	5.80	50.0	379
2003	701,014	-10.9	5.50	50.0	347
2004	1,055,202	50.5	6.30	52.0	578
2005	1,421,615	34.7	6.30	52.0	832
2006	1,700,041	19.6	6.50	54.8	1,049
2007	2,015,128	18.5	6.50	54.8	1,400
2008	2,125,465	5.5	6.65	62.7	1,595
2009	2,161,577	1.7	6.45	63.6	1,561
2010	2,508,289	16.0	6.45	65.7	1,786
2011	2,881,862	14.9	6.50	66.2	1,912
2012	3,584,307	24.4	6.30	68.5	2,210
2013	4,210,165	17.5	6.75	69.5	2,547
2014	4,502,775	7.0	6.50	67.6	2,736
2015	4,775,231	6.1	6.80	70.2	3,012

### International Tourist Arrivals to Cambodia

Months	2011	2012	2013	2014	2015	2016	Change (%)				
							12/11	13/12	14/13	15/14	16*/15
<b>Q1</b>	<b>778,467</b>	<b>995,210</b>	<b>1,172,072</b>	<b>1,267,922</b>	<b>1,307,836</b>	<b>1,342,477</b>	<b>27.8</b>	<b>17.8</b>	<b>8.2</b>	<b>3.1</b>	<b>2.6</b>
January	274,471	350,257	404,106	442,045	460,577	466,086	27.6	15.4	9.4	4.2	1.2
February	255,499	321,870	385,760	425,801	430,207	448,468	26.0	19.8	10.4	1.0	4.2
March	248,497	323,083	382,206	400,076	417,052	427,923	30.0	18.3	4.7	4.2	2.6
<b>Q2</b>	<b>606,562</b>	<b>761,442</b>	<b>920,527</b>	<b>933,446</b>	<b>994,154</b>	<b>367,684</b>	<b>25.5</b>	<b>20.9</b>	<b>1.4</b>	<b>6.5</b>	
April	223,032	277,304	327,000	332,690	361,139	367,684	24.3	17.9	1.7	8.6	1.8
May	190,258	233,220	292,115	300,302	314,748		22.6	25.3	2.8	4.8	
June	193,272	250,918	301,412	300,454	318,267		29.8	20.1	-0.3	5.9	
<b>Q3</b>	<b>699,760</b>	<b>820,888</b>	<b>964,612</b>	<b>998,690</b>	<b>1,044,880</b>	<b>0</b>	<b>17.3</b>	<b>17.5</b>	<b>3.5</b>	<b>4.6</b>	
July	239,527	284,282	338,761	340,091	364,325		18.7	19.2	0.4	7.1	
August	250,429	293,859	342,064	347,211	366,096		17.3	16.4	1.5	5.4	
September	209,804	242,747	283,787	311,388	314,459		15.7	16.9	9.7	1.0	
<b>Q4</b>	<b>797,073</b>	<b>1,006,767</b>	<b>1,152,954</b>	<b>1,302,717</b>	<b>1,428,361</b>	<b>0</b>	<b>26.3</b>	<b>14.5</b>	<b>13.0</b>	<b>9.6</b>	
October	233,190	290,959	334,410	390,637	408,922		24.8	14.9	16.8	4.7	
November	265,539	333,482	386,737	411,501	444,640		25.6	16.0	6.4	8.1	
December	298,344	382,326	431,807	500,579	574,799		28.1	12.9	15.9	14.8	
<b>Total</b>	<b>2,881,862</b>	<b>3,584,307</b>	<b>4,210,165</b>	<b>4,502,775</b>	<b>4,775,231</b>	<b>1,710,161</b>	<b>24.4</b>	<b>17.5</b>	<b>7.0</b>	<b>6.1</b>	<b>2.5</b>



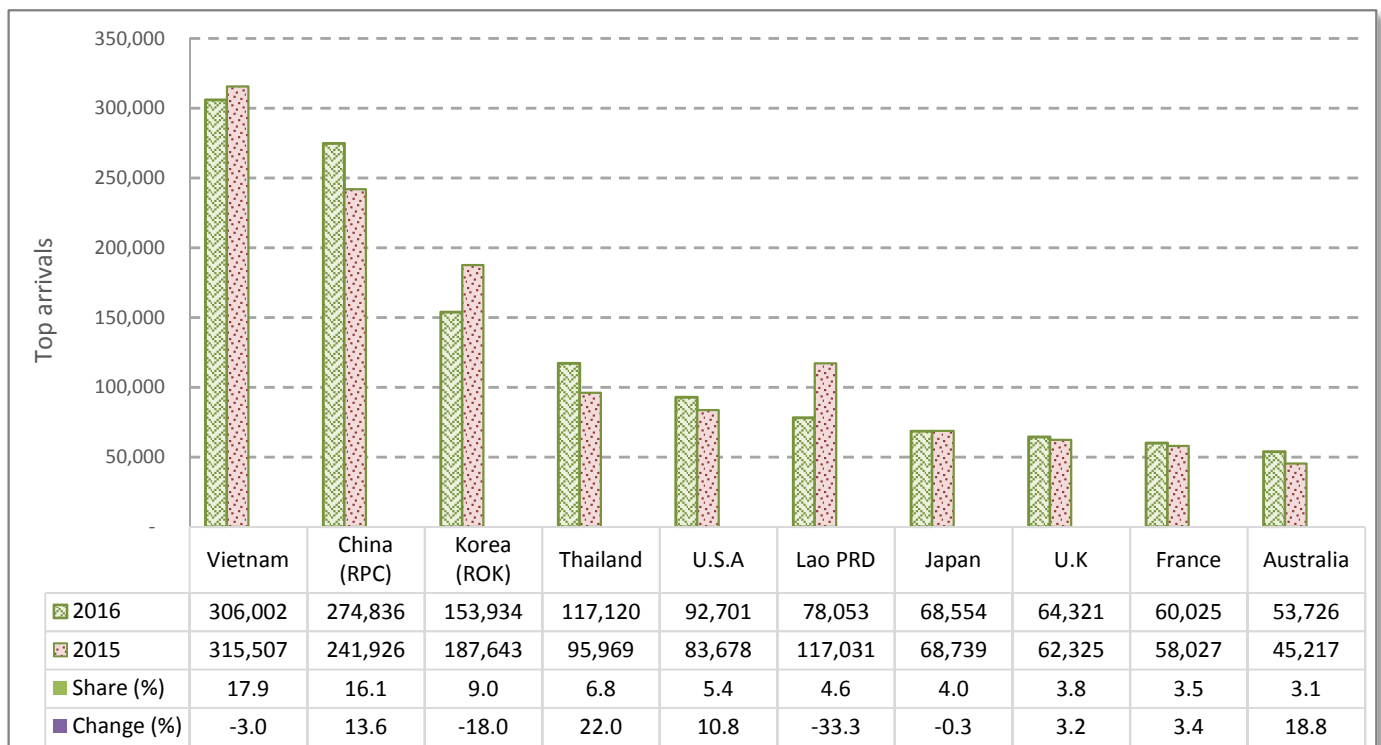
# CAMBODIA: TOURISM STATISTICS REPORT IN THE FIRST FOUR MONTHS 2016

## I. INBOUND TOURISM

### 1. International tourist arrivals in January - April 2016

	Inbound tourism		Share (%)		Change (%)
	2015	2016	2015	2016	2016*/15
<b>Air</b>	<b>914,942</b>	<b>968,600</b>	<b>54.8</b>	<b>56.6</b>	<b>5.9</b>
Phnom Penh Int'l Airport (PNH)	352,365	387,375	21.1	22.7	9.9
Siem Reap Int'l Airport (REP)	562,577	578,407	33.7	33.8	2.8
Kong Keng (KOS)		2,818		0.2	
<b>Land and Waterways</b>	<b>754,033</b>	<b>741,561</b>	<b>45.2</b>	<b>43.4</b>	<b>-1.7</b>
Land	696,041	666,768	41.7	39.0	-4.2
Waterways	57,992	74,793	3.5	4.4	29.0
<b>Total</b>	<b>1,668,975</b>	<b>1,710,161</b>	<b>100.0</b>	<b>100.0</b>	<b>2.5</b>

### 2. Top ten markets arrivals in January - April 2016



## II. OUTBOUND TOURISM

### Outbound tourism in January - April 2016

	Outbound tourism		Change (%)
	2015	2016	2016*/15
Cambodian Outbound Tourists	353,356	461,921	30.7
International Tourists Departure	1,604,974	1,614,824	0.6

## III. INTERNAL TOURISM

### Foreign visitor arrivals to the regions in January - April 2016

	Arrivals		Share (%)		Change (%)
	2015	2016	2015	2016	2016*/15
Phnom Penh & Surrounding	805,794	860,465	41.3	43.0	6.8
Siem Reap Angkor	863,181	849,696	44.3	42.5	-1.6
Coastal Areas	254,625	263,253	13.1	13.2	3.4
Eco-tourism Areas	25,343	26,535	1.3	1.3	4.7
<b>Total</b>	<b>1,948,943</b>	<b>1,999,949</b>	<b>100.0</b>	<b>100.0</b>	<b>2.6</b>

## International Tourist Arrivals to Cambodia by Country of Residence in January - April 2016

(by all means of transportation)

Regions Country of Residence	2015	2016			Total	Female	Share	Change
		Purposes of Visit					(%)	(%)
		Holiday	Business	Others			2016*	2016*/15
<b>Grand Total</b>	<b>1,668,975</b>	<b>1,502,183</b>	<b>119,972</b>	<b>88,006</b>	<b>1,710,161</b>	<b>733,337</b>	<b>100.0</b>	<b>2.5</b>
<b>Asia and the Pacific</b>	<b>1,240,394</b>	<b>1,059,627</b>	<b>104,022</b>	<b>79,470</b>	<b>1,243,119</b>	<b>520,735</b>	<b>72.7</b>	<b>0.2</b>
<b>ASEAN (Southeast Asia)</b>	<b>630,414</b>	<b>510,238</b>	<b>39,887</b>	<b>70,748</b>	<b>620,873</b>	<b>251,431</b>	<b>36.3</b>	<b>-1.5</b>
Brunei Darussalam	264	229	4	16	249	98	0.0	-5.7
Indonesia	13,787	8,388	4,865	2,256	15,509	3,759	0.9	12.5
Lao PDR	117,031	72,206	76	5,771	78,053	40,649	4.6	-33.3
Malaysia	43,500	40,215	3,830	641	44,686	14,716	2.6	2.7
Myanmar	3,204	3,478	206	456	4,140	1,782	0.2	29.2
Philippines	23,927	25,269	4,319	5,749	35,337	17,263	2.1	47.7
Singapore	17,225	18,272	1,124	381	19,777	6,109	1.2	14.8
Thailand	95,969	98,544	6,780	11,796	117,120	44,588	6.8	22.0
Vietnam	315,507	243,637	18,683	43,682	306,002	122,467	17.9	-3.0
<b>Northeast Asia</b>	<b>542,440</b>	<b>476,702</b>	<b>59,601</b>	<b>5,247</b>	<b>541,550</b>	<b>235,499</b>	<b>31.7</b>	<b>-0.2</b>
China	241,926	232,686	39,016	3,134	274,836	122,442	16.1	13.6
Hong Kong (China)	4,561	6,989	104	22	7,115	3,325	0.4	56.0
Japan	68,739	59,726	7,934	894	68,554	27,218	4.0	-0.3
Korea (ROK)	187,643	146,611	6,205	1,118	153,934	67,508	9.0	-18.0
Macau (China)	157	116	6	7	129	37	0.0	-17.8
Mongolia	177	188	13	13	214	125	0.0	20.9
Taiwan (China)	39,237	30,386	6,323	59	36,768	14,844	2.1	-6.3
<b>Southern Asia</b>	<b>13,374</b>	<b>13,285</b>	<b>1,752</b>	<b>2,268</b>	<b>17,305</b>	<b>4,449</b>	<b>1.0</b>	<b>29.4</b>
Afghanistan	27	53	1	8	62	19	0.0	129.6
Bangladesh	640	486	139	63	688	105	0.0	7.5
Bhutan	69	57	3	47	107	39	0.0	55.1
India	10,863	11,275	1,135	2,055	14,465	3,813	0.8	33.2
Nepal	756	561	98	45	704	183	0.0	-6.9
Pakistan	433	312	157	38	507	104	0.0	17.1
Sri Lanka	586	541	219	12	772	186	0.0	31.7
<b>Oceania</b>	<b>52,949</b>	<b>58,326</b>	<b>2,693</b>	<b>557</b>	<b>61,576</b>	<b>28,644</b>	<b>3.6</b>	<b>16.3</b>
Australia	45,217	50,954	2,271	501	53,726	25,037	3.1	18.8
Fiji	49	43	10	8	61	20	0.0	24.5
New Zealand	7,683	7,329	412	48	7,789	3,587	0.5	1.4
Other Asia & the Pacific	1,217	1,076	89	650	1,815	712	0.1	49.1
<b>Europe</b>	<b>294,096</b>	<b>300,722</b>	<b>10,567</b>	<b>4,931</b>	<b>316,220</b>	<b>143,438</b>	<b>18.5</b>	<b>7.5</b>
<b>Northern Europe</b>	<b>88,782</b>	<b>87,009</b>	<b>3,511</b>	<b>927</b>	<b>91,447</b>	<b>39,597</b>	<b>5.3</b>	<b>3.0</b>
Denmark	5,700	5,609	148	41	5,798	2,503	0.3	1.7
Finland	3,518	2,995	109	36	3,140	1,246	0.2	-10.7
Iceland	339	378	6	10	394	164	0.0	16.2
Ireland	3,843	3,670	146	38	3,854	1,694	0.2	0.3
Norway	4,624	4,487	90	35	4,612	2,201	0.3	-0.3
Sweden	8,433	8,941	307	80	9,328	3,995	0.5	10.6
United Kingdom	62,325	60,929	2,705	687	64,321	27,794	3.8	3.2
<b>Western Europe</b>	<b>129,292</b>	<b>140,746</b>	<b>5,111</b>	<b>2,197</b>	<b>148,054</b>	<b>66,751</b>	<b>8.7</b>	<b>14.5</b>
Austria	4,701	5,433	84	31	5,548	2,468	0.3	18.0
Belgium	6,246	6,128	260	121	6,509	2,701	0.4	4.2
France	58,027	55,970	3,051	1,004	60,025	27,130	3.5	3.4
Germany	40,262	51,536	859	790	53,185	24,270	3.1	32.1
Luxembourg	291	384	4	6	394	174	0.0	35.4
Monaco	29	18	0	4	22	7	0.0	-24.1
Netherlands	10,145	10,315	487	124	10,926	4,917	0.6	7.7
Switzerland	9,591	10,962	366	117	11,445	5,084	0.7	19.3
<b>Central / Eastern Europe</b>	<b>49,280</b>	<b>44,268</b>	<b>976</b>	<b>634</b>	<b>45,878</b>	<b>23,666</b>	<b>2.7</b>	<b>-6.9</b>
Bulgaria	858	822	12	18	852	444	0.0	-0.7
Czech Republic	2,959	2,746	27	27	2,800	1,235	0.2	-5.4
Estonia	1,009	1,024	12	4	1,040	464	0.1	3.1
Hungary	2,156	2,518	53	23	2,594	1,270	0.2	20.3
Kazakhstan	1,264	673	84	6	763	373	0.0	-39.6
Kyrgyzstan	78	53	4	9	66	29	0.0	-15.4
Latvia	408	433	18	6	457	225	0.0	12.0
Lithuania	908	1,034	17	6	1,057	540	0.1	16.4
Poland	6,577	6,927	87	24	7,038	3,483	0.4	7.0
Romania	1,186	1,081	32	29	1,142	655	0.1	-3.7
Russian Federation	27,721	23,199	501	97	23,797	12,834	1.4	-14.2
Slovakia	1,187	1,277	34	9	1,320	612	0.1	11.2
Ukraine	2,728	2,313	68	363	2,744	1,407	0.2	0.6
Uzbekistan	241	168	27	13	208	95	0.0	-13.7

Source: Statistics and Tourism Information Department, MOT

## International Tourist Arrivals to Cambodia by Country of Residence in January - April 2016

(by all means of transportation)

Regions Country of Residence	2015	2016			Total	Female	Share	Change
		Purposes of Visit					(%)	(%)
		Holiday	Business	Others			2016*	2016*/15
<b>Grand Total</b>	<b>1,668,975</b>	<b>1,502,183</b>	<b>119,972</b>	<b>88,006</b>	<b>1,710,161</b>	<b>733,337</b>	<b>100.0</b>	<b>2.5</b>
<b>Southern Europe</b>	<b>25,688</b>	<b>27,560</b>	<b>915</b>	<b>774</b>	<b>29,249</b>	<b>12,830</b>	<b>1.7</b>	<b>13.9</b>
Croatia	609	529	18	60	607	272	0.0	-0.3
Greece	728	544	23	30	597	246	0.0	-18.0
Italy	11,515	12,860	407	221	13,488	5,676	0.8	17.1
Malta	191	201	2	4	207	83	0.0	8.4
Portugal	1,846	2,287	72	52	2,411	1,158	0.1	30.6
Serbia	441	374	8	228	610	267	0.0	38.3
Slovenia	533	507	25	6	538	238	0.0	0.9
Spain	7,362	7,972	211	77	8,260	3,876	0.5	12.2
Turkey	2,463	2,286	149	96	2,531	1,014	0.1	2.8
Other Europe	1,054	1,139	54	399	1,592	594	0.1	51.0
<b>Americas</b>	<b>125,770</b>	<b>132,547</b>	<b>4,553</b>	<b>3,139</b>	<b>140,239</b>	<b>64,905</b>	<b>8.2</b>	<b>11.5</b>
<b>North America</b>	<b>111,278</b>	<b>115,036</b>	<b>4,377</b>	<b>2,596</b>	<b>122,009</b>	<b>56,205</b>	<b>7.1</b>	<b>9.6</b>
Canada	25,556	25,767	846	267	26,880	12,505	1.6	5.2
Mexico	2,044	2,345	33	50	2,428	1,210	0.1	18.8
United States	83,678	86,924	3,498	2,279	92,701	42,490	5.4	10.8
<b>Central America</b>	<b>265</b>	<b>360</b>	<b>14</b>	<b>38</b>	<b>412</b>	<b>151</b>	<b>0.0</b>	<b>55.5</b>
Costa Rica	184	252	4	7	263	116	0.0	42.9
Honduras	46	83	6	25	114	15	0.0	147.8
Jamaica	35	25	4	6	35	20	0.0	0.0
<b>South America</b>	<b>13,402</b>	<b>16,355</b>	<b>132</b>	<b>254</b>	<b>16,741</b>	<b>8,097</b>	<b>1.0</b>	<b>24.9</b>
Argentina	4,171	6,932	21	33	6,986	3,297	0.4	67.5
Brazil	4,936	4,319	59	71	4,449	2,104	0.3	-9.9
Chile	2,378	3,100	12	31	3,143	1,622	0.2	32.2
Colombia	950	957	21	21	999	493	0.1	5.2
Ecuador	252	210	6	6	222	112	0.0	-11.9
Peru	298	350	4	82	436	207	0.0	46.3
Uruguay	282	349	3	5	357	190	0.0	26.6
Venezuela	135	138	6	5	149	72	0.0	10.4
Other America	825	796	30	251	1,077	452	0.1	30.5
<b>Africa</b>	<b>2,977</b>	<b>2,599</b>	<b>504</b>	<b>336</b>	<b>3,439</b>	<b>1,475</b>	<b>0.2</b>	<b>15.5</b>
<b>North Africa</b>	<b>278</b>	<b>295</b>	<b>22</b>	<b>24</b>	<b>341</b>	<b>137</b>	<b>0.0</b>	<b>22.7</b>
Morocco	172	157	19	6	182	80	0.0	5.8
Sudan	40	33	0	11	44	9	0.0	10.0
Tunisia	66	105	3	7	115	48	0.0	74.2
<b>Subsaharan Africa</b>	<b>2,510</b>	<b>2,132</b>	<b>470</b>	<b>272</b>	<b>2,874</b>	<b>1,262</b>	<b>0.2</b>	<b>14.5</b>
Cameroon	78	23	3	4	30	8	0.0	-61.5
Congo	24	32	1	18	51	21	0.0	112.5
Ghana	26	44	5	8	57	22	0.0	119.2
Kenya	114	98	8	18	124	62	0.0	8.8
Liberia	10	9	0	3	12	2	0.0	20.0
Nigeria	353	174	289	10	473	45	0.0	34.0
South Africa	1,823	1,601	147	125	1,873	1,000	0.1	2.7
Tanzania	24	69	4	65	138	39	0.0	475.0
Uganda	18	50	1	3	54	27	0.0	200.0
Zimbabwe	40	32	12	18	62	36	0.0	55.0
Other Africa	189	172	12	40	224	76	0.0	18.5
<b>Middle East</b>	<b>5,738</b>	<b>6,688</b>	<b>326</b>	<b>130</b>	<b>7,144</b>	<b>2,784</b>	<b>0.4</b>	<b>24.5</b>
Egypt	219	238	21	8	267	78	0.0	21.9
Iran	206	148	11	8	167	63	0.0	-18.9
Iraq	38	49	3	5	57	7	0.0	50.0
Israel	4,311	4,886	85	22	4,993	2,286	0.3	15.8
Jordan	116	536	168	8	712	155	0.0	513.8
Kuwait	286	231	2	10	243	20	0.0	-15.0
Oman	92	62	0	3	65	9	0.0	-29.3
Palestine	19	27	3	4	34	14	0.0	78.9
Qatar	63	20	1	3	24	10	0.0	-61.9
Saudi Arabia	131	88	9	6	103	9	0.0	-21.4
Syria	56	133	3	4	140	38	0.0	150.0
United Arab Emirates	30	64	0	6	70	20	0.0	133.3
Yemen	46	97	7	4	108	23	0.0	134.8
Other Middle East	125	109	13	39	161	52	0.0	28.8

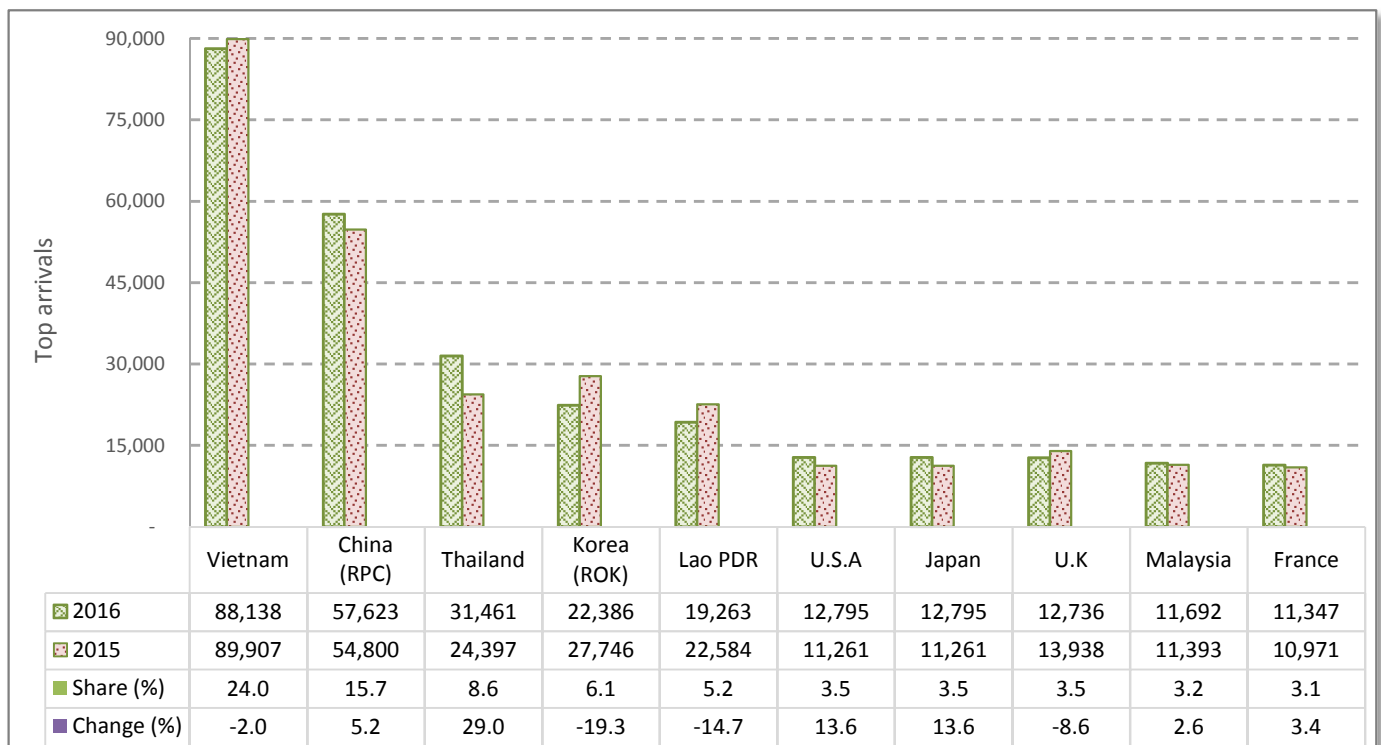
# CAMBODIA: TOURISM STATISTICS REPORT IN APRIL 2016

## I. INBOUND TOURISM

### 1. International tourist arrivals in April 2016

	Inbound tourism		Share (%)		Change (%)
	2015	2016	2015	2016	2016*/15
<b>Air</b>	<b>181,474</b>	<b>183,563</b>	<b>50.3</b>	<b>49.9</b>	<b>1.2</b>
Phnom Penh Int'l Airport (PNH)	79,805	84,094	22.1	22.9	5.4
Siem Reap Int'l Airport (REP)	101,669	99,012	28.2	26.9	-2.6
Kong Keng (KOS)		457		0.1	
<b>Land and Waterways</b>	<b>179,665</b>	<b>184,121</b>	<b>49.7</b>	<b>50.1</b>	<b>2.5</b>
Land	167,098	173,712	46.3	47.2	4.0
Waterways	12,567	10,409	3.5	2.8	-17.2
<b>Total</b>	<b>361,139</b>	<b>367,684</b>	<b>100.0</b>	<b>100.0</b>	<b>1.8</b>

### 2. Top ten markets arrivals in April 2016



## II. OUTBOUND TOURISM

### Outbound tourism in April 2016

	Outbound tourism		Change (%)
	2015	2016	2016*/15
Cambodian Outbound Tourists	106,444	133,574	25.5
International Tourists Departure	337,825	331,546	-1.9

## III. INTERNAL TOURISM

### Foreign visitor arrivals to the regions in April 2016

	Arrivals		Share (%)		Change (%)
	2015	2016	2015	2016	2016*/15
Phnom Penh & Surrounding	186,952	220,742	44.0	50.9	18.1
Siem Reap Angkor	174,187	146,942	41.0	33.9	-15.6
Coastal Areas	57,710	60,125	13.6	13.9	4.2
Eco-tourism Areas	5,844	6,143	1.4	1.4	5.1
<b>Total</b>	<b>424,693</b>	<b>433,952</b>	<b>100.0</b>	<b>100.0</b>	<b>2.2</b>

## International Tourist Arrivals to Cambodia by Country of Residence in April 2016

(by all means of transportation)

Regions Country of Residence	2015	2016			Total	Female	Share	Change
		Purposes of Visit					(%)	(%)
		Holiday	Business	Others			2016*	2016*/15
<b>Grand Total</b>	<b>361,139</b>	<b>314,023</b>	<b>32,794</b>	<b>20,867</b>	<b>367,684</b>	<b>153,690</b>	<b>100.0</b>	<b>1.8</b>
<b>Asia and the Pacific</b>	<b>284,555</b>	<b>242,301</b>	<b>28,544</b>	<b>18,765</b>	<b>289,610</b>	<b>118,411</b>	<b>78.8</b>	<b>1.8</b>
<b>ASEAN (Southeast Asia)</b>	<b>163,818</b>	<b>142,383</b>	<b>10,145</b>	<b>16,991</b>	<b>169,519</b>	<b>68,076</b>	<b>46.1</b>	<b>3.5</b>
Brunei Darussalam	90	82	1	3	86	32	0.0	-4.4
Indonesia	3,126	2,080	1,142	307	3,529	907	1.0	12.9
Lao PDR	22,584	19,125	33	105	19,263	9,117	5.2	-14.7
Malaysia	11,393	10,634	996	62	11,692	3,724	3.2	2.6
Myanmar	1,158	1,359	73	118	1,550	765	0.4	33.9
Philippines	7,219	6,413	1,552	1,244	9,209	4,459	2.5	27.6
Singapore	3,944	4,079	291	221	4,591	1,260	1.2	16.4
Thailand	24,397	25,884	1,812	3,765	31,461	11,062	8.6	29.0
Vietnam	89,907	72,727	4,245	11,166	88,138	36,750	24.0	-2.0
<b>Northeast Asia</b>	<b>104,884</b>	<b>84,463</b>	<b>17,090</b>	<b>1,136</b>	<b>102,689</b>	<b>43,092</b>	<b>27.9</b>	<b>-2.1</b>
China	54,800	46,064	10,960	599	57,623	24,713	15.7	5.2
Hong Kong (China)	799	893	28	8	929	365	0.3	16.3
Japan	11,261	10,480	2,085	230	12,795	4,816	3.5	13.6
Korea (ROK)	27,746	19,965	2,153	268	22,386	9,626	6.1	-19.3
Macau (China)	21	39	3	2	44	15	0.0	109.5
Mongolia	29	26	4	2	32	20	0.0	10.3
Taiwan (China)	10,228	6,996	1,857	27	8,880	3,537	2.4	-13.2
<b>Southern Asia</b>	<b>3,043</b>	<b>2,933</b>	<b>582</b>	<b>314</b>	<b>3,829</b>	<b>1,075</b>	<b>1.0</b>	<b>25.8</b>
Afghanistan	9	8	0	1	9	3	0.0	0.0
Bangladesh	138	122	50	28	200	38	0.1	44.9
Bhutan	13	5	1	1	7	5	0.0	-46.2
India	2,447	2,402	360	239	3,001	840	0.8	22.6
Nepal	155	100	28	17	145	52	0.0	-6.5
Pakistan	103	94	67	22	183	44	0.0	77.7
Sri Lanka	178	202	76	6	284	93	0.1	59.6
<b>Oceania</b>	<b>12,502</b>	<b>12,227</b>	<b>709</b>	<b>130</b>	<b>13,066</b>	<b>5,967</b>	<b>3.6</b>	<b>4.5</b>
Australia	10,675	10,434	594	122	11,150	5,072	3.0	4.4
Fiji	11	10	4	1	15	7	0.0	36.4
New Zealand	1,816	1,783	111	7	1,901	888	0.5	4.7
Other Asia & the Pacific	308	295	18	194	507	201	0.1	64.6
<b>Europe</b>	<b>50,931</b>	<b>47,299</b>	<b>2,871</b>	<b>1,158</b>	<b>51,328</b>	<b>23,155</b>	<b>14.0</b>	<b>0.8</b>
<b>Northern Europe</b>	<b>17,738</b>	<b>15,140</b>	<b>912</b>	<b>187</b>	<b>16,239</b>	<b>7,106</b>	<b>4.4</b>	<b>-8.5</b>
Denmark	740	728	40	18	786	312	0.2	6.2
Finland	397	334	27	10	371	143	0.1	-6.5
Iceland	53	50	1	3	54	15	0.0	1.9
Ireland	849	704	45	10	759	333	0.2	-10.6
Norway	623	470	23	7	500	214	0.1	-19.7
Sweden	1,138	944	69	20	1,033	458	0.3	-9.2
United Kingdom	13,938	11,910	707	119	12,736	5,631	3.5	-8.6
<b>Western Europe</b>	<b>22,414</b>	<b>21,736</b>	<b>1,492</b>	<b>508</b>	<b>23,736</b>	<b>10,486</b>	<b>6.5</b>	<b>5.9</b>
Austria	518	572	21	5	598	255	0.2	15.4
Belgium	1,294	1,123	65	33	1,221	497	0.3	-5.6
France	10,971	10,063	951	333	11,347	5,072	3.1	3.4
Germany	5,992	6,059	211	75	6,345	2,752	1.7	5.9
Luxembourg	69	95	2	1	98	51	0.0	42.0
Monaco	6	3	0	1	4	2	0.0	-33.3
Netherlands	1,795	1,715	123	33	1,871	841	0.5	4.2
Switzerland	1,769	2,106	119	27	2,252	1,016	0.6	27.3
<b>Central / Eastern Europe</b>	<b>6,128</b>	<b>5,954</b>	<b>218</b>	<b>181</b>	<b>6,353</b>	<b>3,389</b>	<b>1.7</b>	<b>3.7</b>
Bulgaria	150	96	1	12	109	49	0.0	-27.3
Czech Republic	373	294	5	6	305	145	0.1	-18.2
Estonia	70	70	2	1	73	35	0.0	4.3
Hungary	202	210	12	4	226	113	0.1	11.9
Kazakhstan	134	63	15	2	80	40	0.0	-40.3
Kyrgyzstan	13	10	2	1	13	3	0.0	0.0
Latvia	72	43	7	1	51	20	0.0	-29.2
Lithuania	94	62	1	2	65	35	0.0	-30.9
Poland	648	663	24	12	699	347	0.2	7.9
Romania	162	100	4	27	131	65	0.0	-19.1
Russian Federation	3,655	3,810	106	39	3,955	2,219	1.1	8.2
Slovakia	212	213	10	2	225	109	0.1	6.1
Ukraine	279	292	21	71	384	189	0.1	37.6
Uzbekistan	64	28	8	1	37	20	0.0	-42.2

Source: Statistics and Tourism Information Department, MOT

## International Tourist Arrivals to Cambodia by Country of Residence in April 2016

(by all means of transportation)

Regions Country of Residence	2015	2016			Total	Female	Share	Change
		Purposes of Visit					(%)	(%)
		Holiday	Business	Others			2016*	2016*/15
<b>Grand Total</b>	<b>361,139</b>	<b>314,023</b>	<b>32,794</b>	<b>20,867</b>	<b>367,684</b>	<b>153,690</b>	<b>100.0</b>	<b>1.8</b>
<b>Southern Europe</b>	<b>4,387</b>	<b>4,155</b>	<b>234</b>	<b>148</b>	<b>4,537</b>	<b>2,001</b>	<b>1.2</b>	<b>3.4</b>
Croatia	53	44	1	19	64	20	0.0	20.8
Greece	130	89	4	26	119	46	0.0	-8.5
Italy	1,612	1,666	91	21	1,778	751	0.5	10.3
Malta	44	18	1	1	20	7	0.0	-54.5
Portugal	414	626	22	9	657	317	0.2	58.7
Serbia	38	47	3	27	77	27	0.0	102.6
Slovenia	55	48	9	3	60	28	0.0	9.1
Spain	1,634	1,390	65	22	1,477	709	0.4	-9.6
Turkey	407	227	38	20	285	96	0.1	-30.0
Other Europe	264	314	15	134	463	173	0.1	75.4
<b>Americas</b>	<b>24,009</b>	<b>22,863</b>	<b>1,189</b>	<b>816</b>	<b>24,868</b>	<b>11,422</b>	<b>6.8</b>	<b>3.6</b>
<b>North America</b>	<b>21,297</b>	<b>19,845</b>	<b>1,140</b>	<b>698</b>	<b>21,683</b>	<b>9,892</b>	<b>5.9</b>	<b>1.8</b>
Canada	4,329	3,964	217	55	4,236	2,029	1.2	-2.1
Mexico	590	435	10	7	452	227	0.1	-23.4
United States	16,378	15,446	913	636	16,995	7,636	4.6	3.8
<b>Central America</b>	<b>45</b>	<b>44</b>	<b>3</b>	<b>5</b>	<b>52</b>	<b>21</b>	<b>0.0</b>	<b>15.6</b>
Costa Rica	31	37	1	3	41	17	0.0	32.3
Honduras	6	2	2	1	5	1	0.0	-16.7
Jamaica	8	5	0	1	6	3	0.0	-25.0
<b>South America</b>	<b>2,437</b>	<b>2,738</b>	<b>36</b>	<b>50</b>	<b>2,824</b>	<b>1,385</b>	<b>0.8</b>	<b>15.9</b>
Argentina	792	1,053	7	10	1,070	508	0.3	35.1
Brazil	769	825	14	5	844	415	0.2	9.8
Chile	438	474	2	1	477	250	0.1	8.9
Colombia	207	174	10	5	189	90	0.1	-8.7
Ecuador	46	30	1	1	32	15	0.0	-30.4
Peru	55	74	0	26	100	47	0.0	81.8
Uruguay	88	67	1	1	69	35	0.0	-21.6
Venezuela	42	41	1	1	43	25	0.0	2.4
Other America	230	236	10	63	309	124	0.1	34.3
<b>Africa</b>	<b>696</b>	<b>646</b>	<b>132</b>	<b>93</b>	<b>871</b>	<b>341</b>	<b>0.2</b>	<b>25.1</b>
<b>North Africa</b>	<b>49</b>	<b>65</b>	<b>8</b>	<b>4</b>	<b>77</b>	<b>34</b>	<b>0.0</b>	<b>57.1</b>
Morocco	34	28	6	2	36	18	0.0	5.9
Sudan	5	8	0	1	9	2	0.0	80.0
Tunisia	10	29	2	1	32	14	0.0	220.0
<b>Subsaharan Africa</b>	<b>589</b>	<b>543</b>	<b>118</b>	<b>78</b>	<b>739</b>	<b>291</b>	<b>0.2</b>	<b>25.5</b>
Cameroon	23	5	0	1	6	1	0.0	-73.9
Congo	7	7	0	1	8	2	0.0	14.3
Ghana	4	5	2	1	8	3	0.0	100.0
Kenya	20	21	1	2	24	14	0.0	20.0
Liberia	3	5	0	1	6	1	0.0	100.0
Nigeria	83	56	71	3	130	12	0.0	56.6
South Africa	422	423	39	35	497	237	0.1	17.8
Tanzania	8	2	0	28	30	2	0.0	275.0
Uganda	6	13	1	1	15	9	0.0	150.0
Zimbabwe	13	6	4	5	15	10	0.0	15.4
Other Africa	58	38	6	11	55	16	0.0	-5.2
<b>Middle East</b>	<b>948</b>	<b>914</b>	<b>58</b>	<b>35</b>	<b>1,007</b>	<b>361</b>	<b>0.3</b>	<b>6.2</b>
Egypt	62	68	10	3	81	31	0.0	30.6
Iran	18	18	6	2	26	10	0.0	44.4
Iraq	14	13	1	1	15	2	0.0	7.1
Israel	633	608	22	3	633	270	0.2	0.0
Jordan	24	31	9	1	41	8	0.0	70.8
Kuwait	47	44	0	2	46	4	0.0	-2.1
Oman	14	26	0	1	27	3	0.0	92.9
Palestine	7	5	1	1	7	2	0.0	0.0
Qatar	6	2	0	1	3	1	0.0	-50.0
Saudi Arabia	42	24	3	2	29	3	0.0	-31.0
Syria	20	31	2	1	34	8	0.0	70.0
United Arab Emirates	8	13	0	1	14	1	0.0	75.0
Yemen	14	14	0	1	15	5	0.0	7.1
Other Middle East	39	17	4	15	36	13	0.0	-7.7