



KINGDOM OF CAMBODIA
NATION RELIGION KING



TOURISM STATISTICS REPORT

Semester I 2016

MINISTRY OF TOURISM

Statistics and Tourism Information Department

No. A3, Street 169, Sangkat Veal Vong, Khan 7 Makara, Phnom Penh, Cambodia.

Fax: +855 23 885003

E-mail: kong@mot.gov.kh

Web site: www.mot.gov.kh

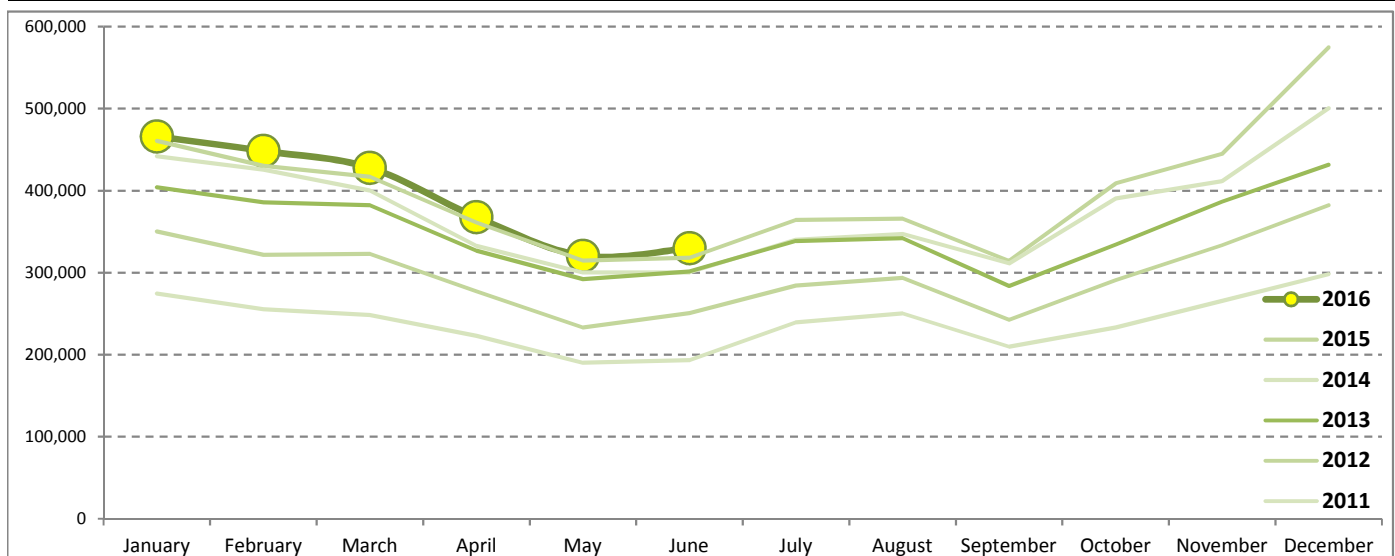
Tourism Highlights

International Tourist Arrivals, Average Length of Stays, Hotel Occupancy & Tourism Receipts 1993 - 2015

Years	Int'l Tourist Arrivals		Average Length	Hotel Occupancy	Tourism Receipts
	Number	Change (%)	of Stays (Days)	(%)	(Million US\$)
1993	118,183	-	N/A	N/A	N/A
1994	176,617	49.4	N/A	N/A	N/A
1995	219,680	24.4	8.00	37.0	100
1996	260,489	18.6	7.50	40.0	118
1997	218,843	-16.0	6.40	30.0	103
1998	286,524	30.9	5.20	40.0	166
1999	367,743	28.3	5.50	44.0	190
2000	466,365	26.8	5.50	45.0	228
2001	604,919	29.7	5.50	48.0	304
2002	786,524	30.0	5.80	50.0	379
2003	701,014	-10.9	5.50	50.0	347
2004	1,055,202	50.5	6.30	52.0	578
2005	1,421,615	34.7	6.30	52.0	832
2006	1,700,041	19.6	6.50	54.8	1,049
2007	2,015,128	18.5	6.50	54.8	1,400
2008	2,125,465	5.5	6.65	62.7	1,595
2009	2,161,577	1.7	6.45	63.6	1,561
2010	2,508,289	16.0	6.45	65.7	1,786
2011	2,881,862	14.9	6.50	66.2	1,912
2012	3,584,307	24.4	6.30	68.5	2,210
2013	4,210,165	17.5	6.75	69.5	2,547
2014	4,502,775	7.0	6.50	67.6	2,736
2015	4,775,231	6.1	6.80	70.2	3,012

International Tourist Arrivals to Cambodia

Months	2011	2012	2013	2014	2015	2016	Change (%)				
							12/11	13/12	14/13	15/14	16*/15
Q1	778,467	995,210	1,172,072	1,267,922	1,307,836	1,342,477	27.8	17.8	8.2	3.1	2.6
January	274,471	350,257	404,106	442,045	460,577	466,086	27.6	15.4	9.4	4.2	1.2
February	255,499	321,870	385,760	425,801	430,207	448,468	26.0	19.8	10.4	1.0	4.2
March	248,497	323,083	382,206	400,076	417,052	427,923	30.0	18.3	4.7	4.2	2.6
Q2	606,562	761,442	920,527	933,446	994,154	1,018,455	25.5	20.9	1.4	6.5	2.4
April	223,032	277,304	327,000	332,690	361,139	367,684	24.3	17.9	1.7	8.6	1.8
May	190,258	233,220	292,115	300,302	314,748	320,601	22.6	25.3	2.8	4.8	1.9
June	193,272	250,918	301,412	300,454	318,267	330,170	29.8	20.1	-0.3	5.9	3.7
Q3	699,760	820,888	964,612	998,690	1,044,880	0	17.3	17.5	3.5	4.6	
July	239,527	284,282	338,761	340,091	364,325		18.7	19.2	0.4	7.1	
August	250,429	293,859	342,064	347,211	366,096		17.3	16.4	1.5	5.4	
September	209,804	242,747	283,787	311,388	314,459		15.7	16.9	9.7	1.0	
Q4	797,073	1,006,767	1,152,954	1,302,717	1,428,361	0	26.3	14.5	13.0	9.6	
October	233,190	290,959	334,410	390,637	408,922		24.8	14.9	16.8	4.7	
November	265,539	333,482	386,737	411,501	444,640		25.6	16.0	6.4	8.1	
December	298,344	382,326	431,807	500,579	574,799		28.1	12.9	15.9	14.8	
Total	2,881,862	3,584,307	4,210,165	4,502,775	4,775,231	2,360,932	24.4	17.5	7.0	6.1	2.6



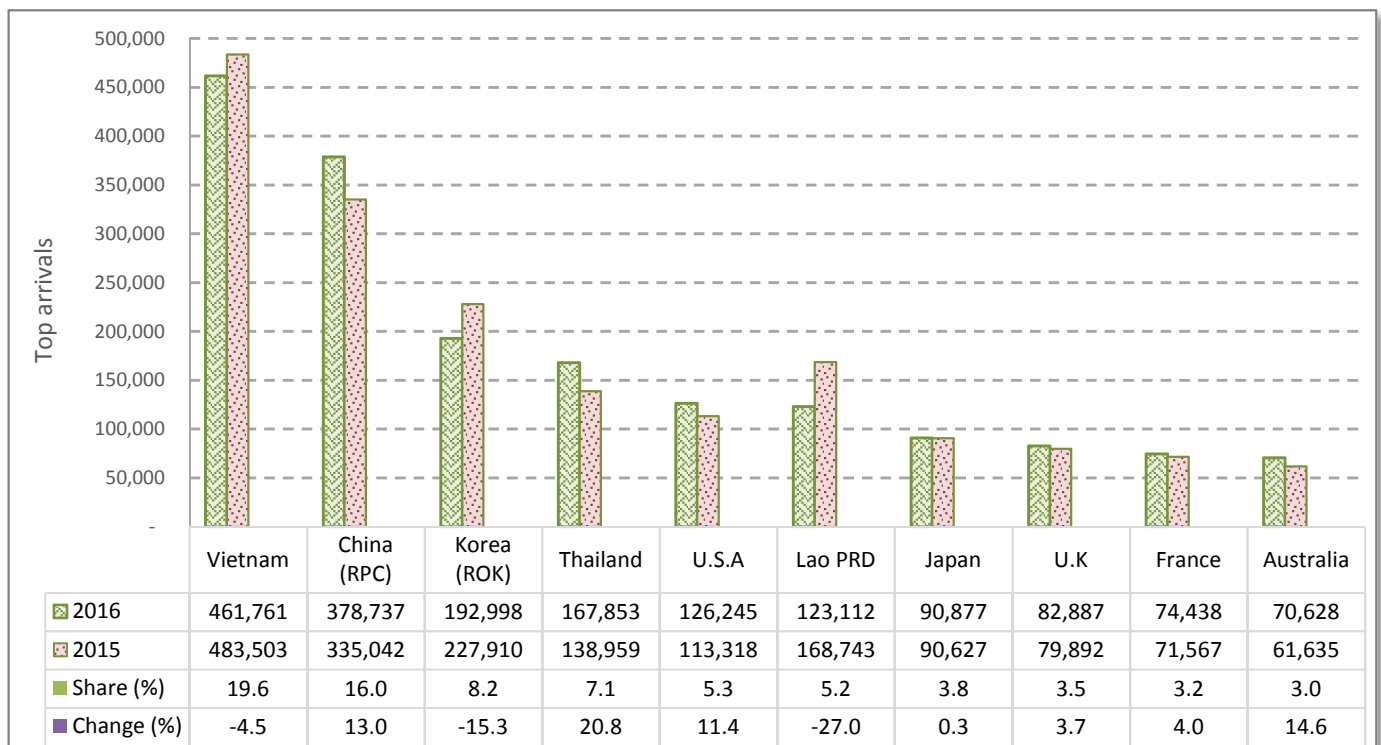
CAMBODIA: TOURISM STATISTICS REPORT IN THE FIRST SEMESTER 2016

I. INBOUND TOURISM

1. International tourist arrivals in January - June 2016

	Inbound tourism		Share (%)		Change (%)
	2015	2016	2015	2016	2016*/15
Air	1,230,897	1,304,826	53.5	55.3	6.0
Phnom Penh Int'l Airport (PNH)	511,626	559,329	22.2	23.7	9.3
Siem Reap Int'l Airport (REP)	719,271	741,671	31.2	31.4	3.1
Kong Keng (KOS)		3,826		0.2	
Land and Waterways	1,071,093	1,056,106	46.5	44.7	-1.4
Land	999,044	969,444	43.4	41.1	-3.0
Waterways	72,049	86,662	3.1	3.7	20.3
Total	2,301,990	2,360,932	100.0	100.0	2.6

2. Top ten markets arrivals in January - June 2016



II. OUTBOUND TOURISM

Outbound tourism in January - June 2016

	Outbound tourism		Change (%)
	2015	2016	2016*/15
Cambodian Outbound Tourists	553,014	699,654	26.5
International Tourists Departure	2,229,185	2,223,903	-0.2

III. INTERNAL TOURISM

Foreign visitor arrivals to the regions in January - June 2016

	Arrivals		Share (%)		Change (%)
	2015	2016	2015	2016	2016*/15
Phnom Penh & Surrounding	1,196,308	1,265,250	44.4	45.6	5.8
Siem Reap Angkor	1,105,682	1,095,682	41.0	39.5	-0.9
Coastal Areas	358,308	378,919	13.3	13.6	5.8
Eco-tourism Areas	35,283	37,385	1.3	1.3	6.0
Total	2,695,581	2,777,236	100.0	100.0	3.0

International Tourist Arrivals to Cambodia by Country of Residence in January - June 2016

(by all means of transportation)

Regions	2015	2016			Share	Change		
Country of Residence	Purposes of Visit			Total	Female	(%)	(%)	
	Holiday	Business	Others			2016*	2016*/15	
Grand Total	2,301,990	2,060,865	174,248	125,819	2,360,932	1,008,100	100.0	2.6
Asia and the Pacific	1,764,195	1,508,516	151,406	113,849	1,773,771	742,958	75.1	0.5
ASEAN (Southeast Asia)	954,536	779,285	58,852	100,098	938,235	386,360	39.7	-1.7
Brunei Darussalam	386	334	7	24	365	147	0.0	-5.4
Indonesia	19,882	13,476	6,993	2,797	23,266	5,983	1.0	17.0
Lao PDR	168,743	115,184	114	7,814	123,112	65,399	5.2	-27.0
Malaysia	68,821	63,733	5,540	1,177	70,450	23,281	3.0	2.4
Myanmar	4,640	5,347	299	641	6,287	2,665	0.3	35.5
Philippines	39,695	39,723	6,248	6,389	52,360	26,521	2.2	31.9
Singapore	29,907	30,367	1,686	728	32,781	10,708	1.4	9.6
Thailand	138,959	141,335	10,361	16,157	167,853	64,373	7.1	20.8
Vietnam	483,503	369,786	27,604	64,371	461,761	187,283	19.6	-4.5
Northeast Asia	715,654	630,436	85,928	9,079	725,443	311,188	30.7	1.4
China	335,042	317,945	55,534	5,258	378,737	167,358	16.0	13.0
Hong Kong (China)	6,128	9,022	143	42	9,207	4,352	0.4	50.2
Japan	90,627	77,543	11,832	1,502	90,877	34,896	3.8	0.3
Korea (ROK)	227,910	181,688	9,196	2,114	192,998	83,287	8.2	-15.3
Macau (China)	237	153	10	22	185	45	0.0	-21.9
Mongolia	242	212	22	21	255	148	0.0	5.4
Taiwan (China)	55,468	43,873	9,191	120	53,184	21,102	2.3	-4.1
Southern Asia	19,581	19,801	2,645	2,687	25,133	6,607	1.1	28.4
Afghanistan	54	60	3	12	75	21	0.0	38.9
Bangladesh	993	652	195	108	955	143	0.0	-3.8
Bhutan	88	68	5	51	124	44	0.0	40.9
India	15,839	16,884	1,728	2,353	20,965	5,737	0.9	32.4
Nepal	1,068	935	166	73	1,174	296	0.0	9.9
Pakistan	683	457	232	55	744	130	0.0	8.9
Srilanka	856	745	316	35	1,096	236	0.0	28.0
Oceania	72,256	77,078	3,860	858	81,796	37,581	3.5	13.2
Australia	61,635	66,597	3,247	784	70,628	32,479	3.0	14.6
Fiji	72	60	14	10	84	28	0.0	16.7
New Zealand	10,549	10,421	599	64	11,084	5,074	0.5	5.1
Other Asia & the Pacific	2,168	1,916	121	1,127	3,164	1,222	0.1	45.9
Europe	359,001	364,564	15,172	6,547	386,283	173,621	16.4	7.6
Northern Europe	111,581	109,287	4,944	1,183	115,414	49,800	4.9	3.4
Denmark	6,759	6,563	199	64	6,826	2,925	0.3	1.0
Finland	4,108	3,468	137	50	3,655	1,463	0.2	-11.0
Iceland	402	444	8	14	466	192	0.0	15.9
Ireland	5,325	5,223	215	53	5,491	2,491	0.2	3.1
Norway	5,469	5,321	130	43	5,494	2,553	0.2	0.5
Sweden	9,626	10,103	386	106	10,595	4,499	0.4	10.1
United Kingdom	79,892	78,165	3,869	853	82,887	35,677	3.5	3.7
Western Europe	156,342	167,974	7,422	2,892	178,288	79,352	7.6	14.0
Austria	5,270	6,039	119	39	6,197	2,731	0.3	17.6
Belgium	7,716	7,314	369	205	7,888	3,206	0.3	2.2
France	71,567	68,720	4,392	1,326	74,438	33,283	3.2	4.0
Germany	47,003	58,280	1,256	955	60,491	27,263	2.6	28.7
Luxembourg	348	425	7	10	442	189	0.0	27.0
Monaco	40	24	1	7	32	8	0.0	-20.0
Netherlands	13,098	13,209	700	171	14,080	6,253	0.6	7.5
Switzerland	11,300	13,963	578	179	14,720	6,419	0.6	30.3
Central / Eastern Europe	56,811	50,899	1,396	888	53,183	27,318	2.3	-6.4
Bulgaria	949	933	17	23	973	501	0.0	2.5
Czech Republic	3,298	3,080	42	36	3,158	1,390	0.1	-4.2
Estonia	1,112	1,084	18	8	1,110	493	0.0	-0.2
Hungary	2,463	2,727	72	32	2,831	1,375	0.1	14.9
Kazakhstan	1,467	796	130	11	937	467	0.0	-36.1
Kyrgyzstan	89	64	9	11	84	38	0.0	-5.6
Latvia	478	476	21	11	508	248	0.0	6.3
Lithuania	1,020	1,140	28	10	1,178	597	0.0	15.5
Poland	7,260	7,753	123	40	7,916	3,906	0.3	9.0
Romania	1,329	1,237	39	32	1,308	732	0.1	-1.6
Russian Federation	32,378	27,210	719	183	28,112	15,117	1.2	-13.2
Slovakia	1,376	1,477	42	19	1,538	702	0.1	11.8
Ukraine	3,203	2,712	98	451	3,261	1,630	0.1	1.8
Uzbekistan	389	210	38	21	269	122	0.0	-30.8

Source: Statistics and Tourism Information Department, MOT

International Tourist Arrivals to Cambodia by Country of Residence in January - June 2016

(by all means of transportation)

Regions Country of Residence	2015	2016			Total	Female	Share	Change
		Purposes of Visit					(%)	(%)
		Holiday	Business	Others			2016*	2016*/15
Grand Total	2,301,990	2,060,865	174,248	125,819	2,360,932	1,008,100	100.0	2.6
Southern Europe	32,483	34,602	1,328	966	36,896	16,174	1.6	13.6
Croatia	675	586	24	63	673	297	0.0	-0.3
Greece	826	682	38	91	811	313	0.0	-1.8
Italy	13,609	15,077	596	256	15,929	6,658	0.7	17.0
Malta	234	235	3	7	245	99	0.0	4.7
Portugal	2,418	2,914	100	69	3,083	1,462	0.1	27.5
Serbia	487	414	15	232	661	291	0.0	35.7
Slovenia	612	576	36	9	621	283	0.0	1.5
Spain	10,437	11,321	296	95	11,712	5,538	0.5	12.2
Turkey	3,185	2,797	220	144	3,161	1,233	0.1	-0.8
Other Europe	1,784	1,802	82	618	2,502	977	0.1	40.2
Americas	167,434	176,096	6,499	4,633	187,228	86,273	7.9	11.8
North America	148,722	153,771	6,219	3,548	163,538	75,110	6.9	10.0
Canada	32,282	32,287	1,184	313	33,784	15,826	1.4	4.7
Mexico	3,122	3,415	36	58	3,509	1,764	0.1	12.4
United States	113,318	118,069	4,999	3,177	126,245	57,520	5.3	11.4
Central America	344	426	18	45	489	182	0.0	42.2
Costa Rica	235	307	5	10	322	141	0.0	37.0
Honduras	61	85	8	27	120	16	0.0	96.7
Jamaica	48	34	5	8	47	25	0.0	-2.1
South America	17,036	20,637	210	616	21,463	10,265	0.9	26.0
Argentina	4,865	8,120	35	36	8,191	3,871	0.3	68.4
Brazil	5,996	5,373	89	77	5,539	2,619	0.2	-7.6
Chile	2,990	3,866	26	36	3,928	2,051	0.2	31.4
Colombia	1,487	1,413	30	23	1,466	718	0.1	-1.4
Ecuador	322	271	8	10	289	147	0.0	-10.2
Peru	432	519	5	417	941	290	0.0	117.8
Uruguay	745	891	8	10	909	474	0.0	22.0
Venezuela	199	184	9	7	200	95	0.0	0.5
Other America	1,332	1,262	52	424	1,738	716	0.1	30.5
Africa	4,228	3,655	757	581	4,993	2,029	0.2	18.1
North Africa	406	373	33	34	440	176	0.0	8.4
Morocco	239	202	28	9	239	105	0.0	0.0
Sudan	73	44	0	15	59	11	0.0	-19.2
Tunisia	94	127	5	10	142	60	0.0	51.1
Subsaharan Africa	3,525	2,990	700	434	4,124	1,711	0.2	17.0
Cameroon	101	35	9	7	51	12	0.0	-49.5
Congo	39	44	3	21	68	23	0.0	74.4
Ghana	41	55	8	50	113	27	0.0	175.6
Kenya	159	142	10	24	176	86	0.0	10.7
Liberia	23	16	0	7	23	5	0.0	0.0
Nigeria	543	255	419	21	695	64	0.0	28.0
South Africa	2,476	2,244	224	135	2,603	1,355	0.1	5.1
Tanzania	38	77	4	142	223	45	0.0	486.8
Uganda	45	64	4	6	74	35	0.0	64.4
Zimbabwe	60	58	19	21	98	59	0.0	63.3
Other Africa	297	292	24	113	429	142	0.0	44.4
Middle East	7,132	8,034	414	209	8,657	3,219	0.4	21.4
Egypt	293	327	29	11	367	105	0.0	25.3
Iran	247	211	19	14	244	88	0.0	-1.2
Iraq	59	64	4	8	76	10	0.0	28.8
Israel	5,028	5,627	135	32	5,794	2,561	0.2	15.2
Jordan	185	610	175	11	796	170	0.0	330.3
Kuwait	447	304	4	17	325	30	0.0	-27.3
Oman	119	85	0	7	92	17	0.0	-22.7
Palestine	34	32	3	6	41	15	0.0	20.6
Qatar	74	27	3	7	37	13	0.0	-50.0
Saudi Arabia	176	156	10	12	178	14	0.0	1.1
Syria	105	193	3	7	203	53	0.0	93.3
United Arab Emirates	52	77	1	8	86	22	0.0	65.4
Yemen	101	132	7	7	146	30	0.0	44.6
Other Middle East	212	189	21	62	272	91	0.0	28.3

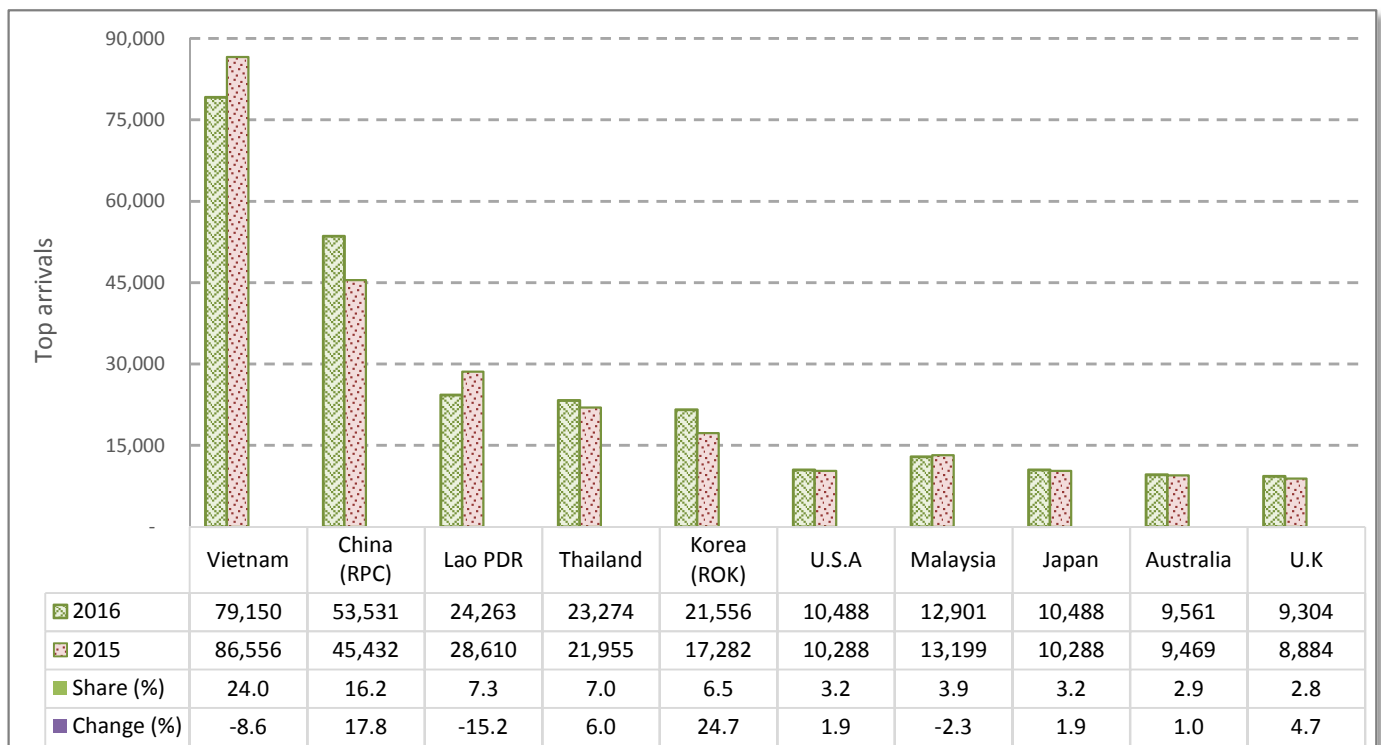
CAMBODIA: TOURISM STATISTICS REPORT IN JUNE 2016

I. INBOUND TOURISM

1. International tourist arrivals in June 2016

	Inbound tourism		Share (%)		Change (%)
	2015	2016	2015	2016	2016*/15
Air	154,952	170,886	48.7	51.8	10.3
Phnom Penh Int'l Airport (PNH)	80,095	88,257	25.2	26.7	10.2
Siem Reap Int'l Airport (REP)	74,857	82,168	23.5	24.9	9.8
Kong Keng (KOS)		461		0.1	
Land and Waterways	163,315	159,284	51.3	48.2	-2.5
Land	155,035	154,260	48.7	46.7	-0.5
Waterways	8,280	5,024	2.6	1.5	-39.3
Total	318,267	330,170	100.0	100.0	3.7

2. Top ten markets arrivals in June 2016



II. OUTBOUND TOURISM

Outbound tourism in June 2016

	Outbound tourism		Change (%)
	2015	2016	2016*/15
Cambodian Outbound Tourists	91,433	110,473	20.8
International Tourists Departure	292,957	289,967	-1.0

III. INTERNAL TOURISM

Foreign visitor arrivals to the regions in June 2016

	Arrivals		Share (%)		Change (%)
	2015	2016	2015	2016	2016*/15
Phnom Penh & Surrounding	203,583	210,131	51.3	54.1	3.2
Siem Reap Angkor	144,684	120,039	36.4	30.9	-17.0
Coastal Areas	43,361	52,935	10.9	13.6	22.1
Eco-tourism Areas	5,382	5,661	1.4	1.5	5.2
Total	397,010	388,766	100.0	100.0	-2.1

International Tourist Arrivals to Cambodia by Country of Residence in June 2016

(by all means of transportation)

Regions Country of Residence	2015	2016			Total	Female	Share	Change
		Purposes of Visit					(%)	(%)
		Holiday	Business	Others			2016*	2016*/15
Grand Total	318,267	284,552	26,058	19,560	330,170	140,883	100.0	3.7
Asia and the Pacific	265,121	230,481	22,748	17,721	270,950	114,906	82.1	2.2
ASEAN (Southeast Asia)	168,672	135,754	8,975	15,065	159,794	68,580	48.4	-5.3
Brunei Darussalam	59	53	2	5	60	23	0.0	1.7
Indonesia	2,900	2,404	1,025	357	3,786	1,033	1.1	30.6
Lao PDR	28,610	22,406	23	1,834	24,263	12,618	7.3	-15.2
Malaysia	13,199	11,707	791	403	12,901	4,114	3.9	-2.3
Myanmar	791	964	44	111	1,119	452	0.3	41.5
Philippines	7,807	7,385	838	137	8,360	4,593	2.5	7.1
Singapore	6,795	6,375	269	237	6,881	2,489	2.1	1.3
Thailand	21,955	19,762	1,652	1,860	23,274	9,028	7.0	6.0
Vietnam	86,556	64,698	4,331	10,121	79,150	34,230	24.0	-8.6
Northeast Asia	81,815	80,262	12,769	1,927	94,958	39,838	28.8	16.1
China	45,432	44,541	7,865	1,125	53,531	23,802	16.2	17.8
Hong Kong (China)	826	986	14	10	1,010	509	0.3	22.3
Japan	10,288	8,314	1,986	188	10,488	3,536	3.2	1.9
Korea (ROK)	17,282	19,503	1,519	534	21,556	8,695	6.5	24.7
Macau (China)	26	19	2	8	29	4	0.0	11.5
Mongolia	20	13	3	5	21	10	0.0	5.0
Taiwan (China)	7,941	6,886	1,380	57	8,323	3,282	2.5	4.8
Southern Asia	3,066	3,274	430	270	3,974	1,060	1.2	29.6
Afghanistan	18	2	1	2	5	1	0.0	-72.2
Bangladesh	184	79	28	31	138	9	0.0	-25.0
Bhutan	10	5	1	3	9	2	0.0	-10.0
India	2,419	2,867	290	186	3,343	970	1.0	38.2
Nepal	159	150	27	21	198	49	0.1	24.5
Pakistan	150	65	34	15	114	5	0.0	-24.0
Sri Lanka	126	106	49	12	167	24	0.1	32.5
Oceania	10,894	10,619	562	165	11,346	5,114	3.4	4.1
Australia	9,469	8,927	475	159	9,561	4,326	2.9	1.0
Fiji	6	10	3	1	14	2	0.0	133.3
New Zealand	1,419	1,682	84	5	1,771	786	0.5	24.8
Other Asia & the Pacific	674	572	12	294	878	314	0.3	30.3
Europe	31,195	30,534	2,213	775	33,522	14,517	10.2	7.5
Northern Europe	11,520	11,347	707	149	12,203	5,391	3.7	5.9
Denmark	470	426	25	14	465	191	0.1	-1.1
Finland	237	220	11	9	240	105	0.1	1.3
Iceland	26	45	1	3	49	17	0.0	88.5
Ireland	821	928	34	6	968	489	0.3	17.9
Norway	524	532	25	7	564	231	0.2	7.6
Sweden	558	560	42	11	613	249	0.2	9.9
United Kingdom	8,884	8,636	569	99	9,304	4,109	2.8	4.7
Western Europe	12,370	12,260	1,112	348	13,720	5,611	4.2	10.9
Austria	244	271	14	2	287	116	0.1	17.6
Belgium	705	610	51	53	714	246	0.2	1.3
France	6,374	6,020	624	148	6,792	2,879	2.1	6.6
Germany	2,947	2,585	210	91	2,886	1,100	0.9	-2.1
Luxembourg	25	19	2	3	24	8	0.0	-4.0
Monaco	6	3	1	2	6	1	0.0	0.0
Netherlands	1,327	1,360	94	22	1,476	638	0.4	11.2
Switzerland	742	1,392	116	27	1,535	623	0.5	106.9
Central / Eastern Europe	3,447	2,957	179	89	3,225	1,611	1.0	-6.4
Bulgaria	50	63	2	4	69	26	0.0	38.0
Czech Republic	141	149	7	5	161	75	0.0	14.2
Estonia	49	35	3	2	40	16	0.0	-18.4
Hungary	137	94	7	8	109	49	0.0	-20.4
Kazakhstan	90	67	21	1	89	45	0.0	-1.1
Kyrgyzstan	7	4	3	1	8	6	0.0	14.3
Latvia	49	15	2	3	20	9	0.0	-59.2
Lithuania	62	46	3	1	50	24	0.0	-19.4
Poland	304	366	17	11	394	192	0.1	29.6
Romania	56	64	2	1	67	34	0.0	19.6
Russian Federation	2,144	1,815	92	37	1,944	1,018	0.6	-9.3
Slovakia	73	67	5	7	79	32	0.0	8.2
Ukraine	209	156	9	3	168	76	0.1	-19.6
Uzbekistan	76	16	6	5	27	9	0.0	-64.5

Source: Statistics and Tourism Information Department, MOT

International Tourist Arrivals to Cambodia by Country of Residence in June 2016

(by all means of transportation)

Regions Country of Residence	2015	2016			Total	Female	Share	Change
		Purposes of Visit					(%)	(%)
		Holiday	Business	Others			2016*	2016*/15
Grand Total	318,267	284,552	26,058	19,560	330,170	140,883	100.0	3.7
Southern Europe	3,353	3,483	205	96	3,784	1,666	1.1	12.9
Croatia	30	30	1	1	32	16	0.0	6.7
Greece	38	42	10	30	82	16	0.0	115.8
Italy	948	1,093	91	21	1,205	487	0.4	27.1
Malta	21	21	1	2	24	12	0.0	14.3
Portugal	283	321	16	8	345	156	0.1	21.9
Serbia	20	14	4	3	21	8	0.0	5.0
Slovenia	44	23	4	1	28	18	0.0	-36.4
Spain	1,688	1,724	41	9	1,774	857	0.5	5.1
Turkey	281	215	37	21	273	96	0.1	-2.8
Other Europe	505	487	10	93	590	238	0.2	16.8
Americas	20,653	22,402	941	908	24,251	10,991	7.3	17.4
North America	18,938	20,375	888	480	21,743	9,986	6.6	14.8
Canada	3,003	2,763	157	20	2,940	1,407	0.9	-2.1
Mexico	527	532	2	5	539	271	0.2	2.3
United States	15,408	17,080	729	455	18,264	8,308	5.5	18.5
Central America	38	21	3	4	28	9	0.0	-26.3
Costa Rica	30	15	1	2	18	6	0.0	-40.0
Honduras	4	2	1	1	4	1	0.0	0.0
Jamaica	4	4	1	1	6	2	0.0	50.0
South America	1,305	1,642	41	348	2,031	818	0.6	55.6
Argentina	217	429	5	2	436	208	0.1	100.9
Brazil	486	470	20	1	491	227	0.1	1.0
Chile	217	346	9	4	359	195	0.1	65.4
Colombia	230	219	2	1	222	106	0.1	-3.5
Ecuador	40	35	1	2	38	19	0.0	-5.0
Peru	51	80	1	334	415	32	0.1	713.7
Uruguay	30	40	2	3	45	22	0.0	50.0
Venezuela	34	23	1	1	25	9	0.0	-26.5
Other America	372	364	9	76	449	178	0.1	20.7
Africa	673	557	112	117	786	289	0.2	16.8
North Africa	48	30	2	7	39	14	0.0	-18.8
Morocco	25	11	2	2	15	6	0.0	-40.0
Sudan	15	5	0	3	8	1	0.0	-46.7
Tunisia	8	14	0	2	16	7	0.0	100.0
Subsaharan Africa	553	459	105	100	664	243	0.2	20.1
Cameroon	9	9	3	2	14	3	0.0	55.6
Congo	10	5	1	1	7	1	0.0	-30.0
Ghana	9	7	0	40	47	2	0.0	422.2
Kenya	25	21	0	2	23	14	0.0	-8.0
Liberia	4	3	0	3	6	1	0.0	50.0
Nigeria	88	33	61	8	102	9	0.0	15.9
South Africa	378	349	34	5	388	196	0.1	2.6
Tanzania	9	6	0	35	41	3	0.0	355.6
Uganda	14	11	2	2	15	6	0.0	7.1
Zimbabwe	7	15	4	2	21	8	0.0	200.0
Other Africa	72	68	5	10	83	32	0.0	15.3
Middle East	625	578	44	39	661	180	0.2	5.8
Egypt	33	26	3	1	30	7	0.0	-9.1
Iran	22	39	6	5	50	17	0.0	127.3
Iraq	12	5	1	1	7	2	0.0	-41.7
Israel	298	313	24	1	338	98	0.1	13.4
Jordan	39	48	4	2	54	13	0.0	38.5
Kuwait	52	16	1	5	22	2	0.0	-57.7
Oman	12	10	0	3	13	3	0.0	8.3
Palestine	7	1	0	1	2	0	0.0	-71.4
Qatar	5	3	1	2	6	1	0.0	20.0
Saudi Arabia	20	19	1	3	23	1	0.0	15.0
Syria	23	29	0	1	30	7	0.0	30.4
United Arab Emirates	7	1	0	1	2	0	0.0	-71.4
Yemen	30	6	0	2	8	1	0.0	-73.3
Other Middle East	65	62	3	11	76	28	0.0	16.9