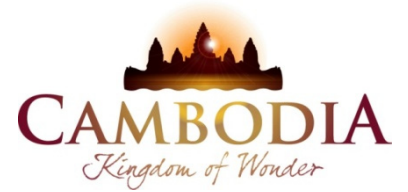




KINGDOM OF CAMBODIA  
NATION RELIGION KING



# TOURISM STATISTICS REPORT

# December 2016

**MINISTRY OF TOURISM**

Statistics and Tourism Information Department

No. A3, Street 169, Sangkat Veal Vong, Khan 7 Makara, Phnom Penh, Cambodia.

Fax: +855 23 885003

E-mail: [kong@mot.gov.kh](mailto:kong@mot.gov.kh)

Web site: [www.mot.gov.kh](http://www.mot.gov.kh)

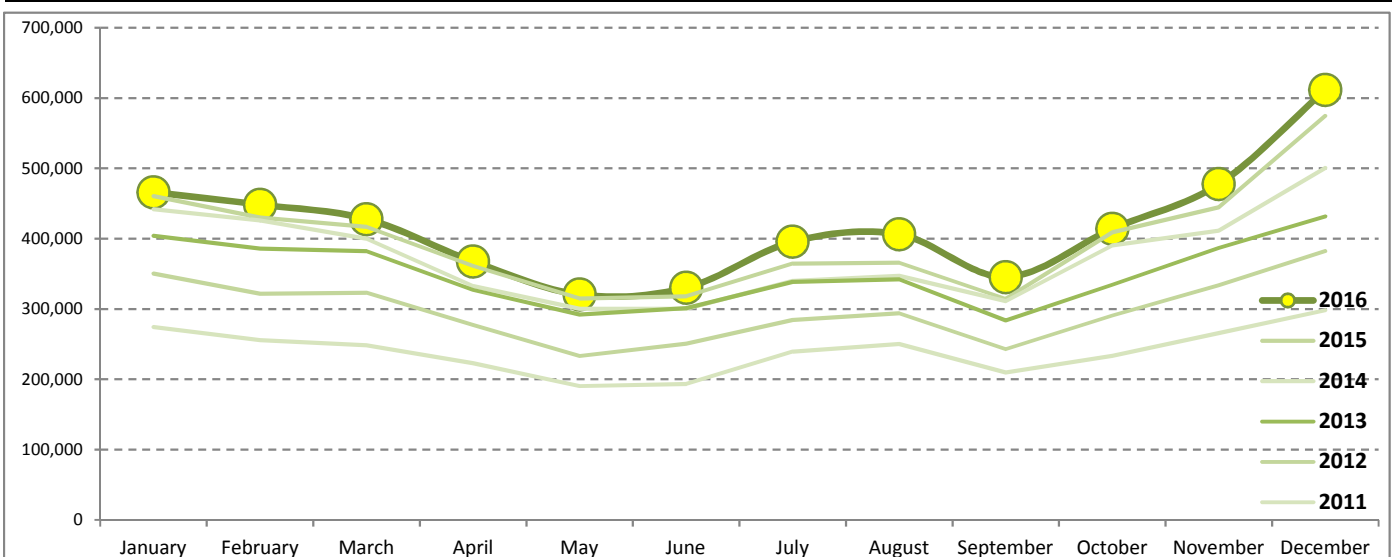
## Tourism Highlights

### International Tourist Arrivals, Average Length of Stays, Hotel Occupancy & Tourism Receipts 1993 - 2015

Years	Int'l Tourist Arrivals		Average Length	Hotel Occupancy	Tourism Receipts
	Number	Change (%)	of Stays (Days)	(%)	(Million US\$)
1993	118,183	-	N/A	N/A	N/A
1994	176,617	49.4	N/A	N/A	N/A
1995	219,680	24.4	8.00	37.0	100
1996	260,489	18.6	7.50	40.0	118
1997	218,843	-16.0	6.40	30.0	103
1998	286,524	30.9	5.20	40.0	166
1999	367,743	28.3	5.50	44.0	190
2000	466,365	26.8	5.50	45.0	228
2001	604,919	29.7	5.50	48.0	304
2002	786,524	30.0	5.80	50.0	379
2003	701,014	-10.9	5.50	50.0	347
2004	1,055,202	50.5	6.30	52.0	578
2005	1,421,615	34.7	6.30	52.0	832
2006	1,700,041	19.6	6.50	54.8	1,049
2007	2,015,128	18.5	6.50	54.8	1,400
2008	2,125,465	5.5	6.65	62.7	1,595
2009	2,161,577	1.7	6.45	63.6	1,561
2010	2,508,289	16.0	6.45	65.7	1,786
2011	2,881,862	14.9	6.50	66.2	1,912
2012	3,584,307	24.4	6.30	68.5	2,210
2013	4,210,165	17.5	6.75	69.5	2,547
2014	4,502,775	7.0	6.50	67.6	2,736
2015	4,775,231	6.1	6.80	70.2	3,012

### International Tourist Arrivals to Cambodia

Months	2011	2012	2013	2014	2015	2016	Change (%)				
							12/11	13/12	14/13	15/14	16*/15
<b>Q1</b>	<b>778,467</b>	<b>995,210</b>	<b>1,172,072</b>	<b>1,267,922</b>	<b>1,307,836</b>	<b>1,342,477</b>	<b>27.8</b>	<b>17.8</b>	<b>8.2</b>	<b>3.1</b>	<b>2.6</b>
January	274,471	350,257	404,106	442,045	460,577	466,086	27.6	15.4	9.4	4.2	1.2
February	255,499	321,870	385,760	425,801	430,207	448,468	26.0	19.8	10.4	1.0	4.2
March	248,497	323,083	382,206	400,076	417,052	427,923	30.0	18.3	4.7	4.2	2.6
<b>Q2</b>	<b>606,562</b>	<b>761,442</b>	<b>920,527</b>	<b>933,446</b>	<b>994,154</b>	<b>1,018,455</b>	<b>25.5</b>	<b>20.9</b>	<b>1.4</b>	<b>6.5</b>	<b>2.4</b>
April	223,032	277,304	327,000	332,690	361,139	367,684	24.3	17.9	1.7	8.6	1.8
May	190,258	233,220	292,115	300,302	314,748	320,601	22.6	25.3	2.8	4.8	1.9
June	193,272	250,918	301,412	300,454	318,267	330,170	29.8	20.1	-0.3	5.9	3.7
<b>Q3</b>	<b>699,760</b>	<b>820,888</b>	<b>964,612</b>	<b>998,690</b>	<b>1,044,880</b>	<b>1,147,483</b>	<b>17.3</b>	<b>17.5</b>	<b>3.5</b>	<b>4.6</b>	<b>9.8</b>
July	239,527	284,282	338,761	340,091	364,325	395,761	18.7	19.2	0.4	7.1	8.6
August	250,429	293,859	342,064	347,211	366,096	406,214	17.3	16.4	1.5	5.4	11.0
September	209,804	242,747	283,787	311,388	314,459	345,508	15.7	16.9	9.7	1.0	9.9
<b>Q4</b>	<b>797,073</b>	<b>1,006,767</b>	<b>1,152,954</b>	<b>1,302,717</b>	<b>1,428,361</b>	<b>1,503,297</b>	<b>26.3</b>	<b>14.5</b>	<b>13.0</b>	<b>9.6</b>	<b>5.2</b>
October	233,190	290,959	334,410	390,637	408,922	414,077	24.8	14.9	16.8	4.7	1.3
November	265,539	333,482	386,737	411,501	444,640	477,686	25.6	16.0	6.4	8.1	7.4
December	298,344	382,326	431,807	500,579	574,799	611,534	28.1	12.9	15.9	14.8	6.4
<b>Total</b>	<b>2,881,862</b>	<b>3,584,307</b>	<b>4,210,165</b>	<b>4,502,775</b>	<b>4,775,231</b>	<b>5,011,712</b>	<b>24.4</b>	<b>17.5</b>	<b>7.0</b>	<b>6.1</b>	<b>5.0</b>



Source: Statistics and Tourism Information Department, MOT

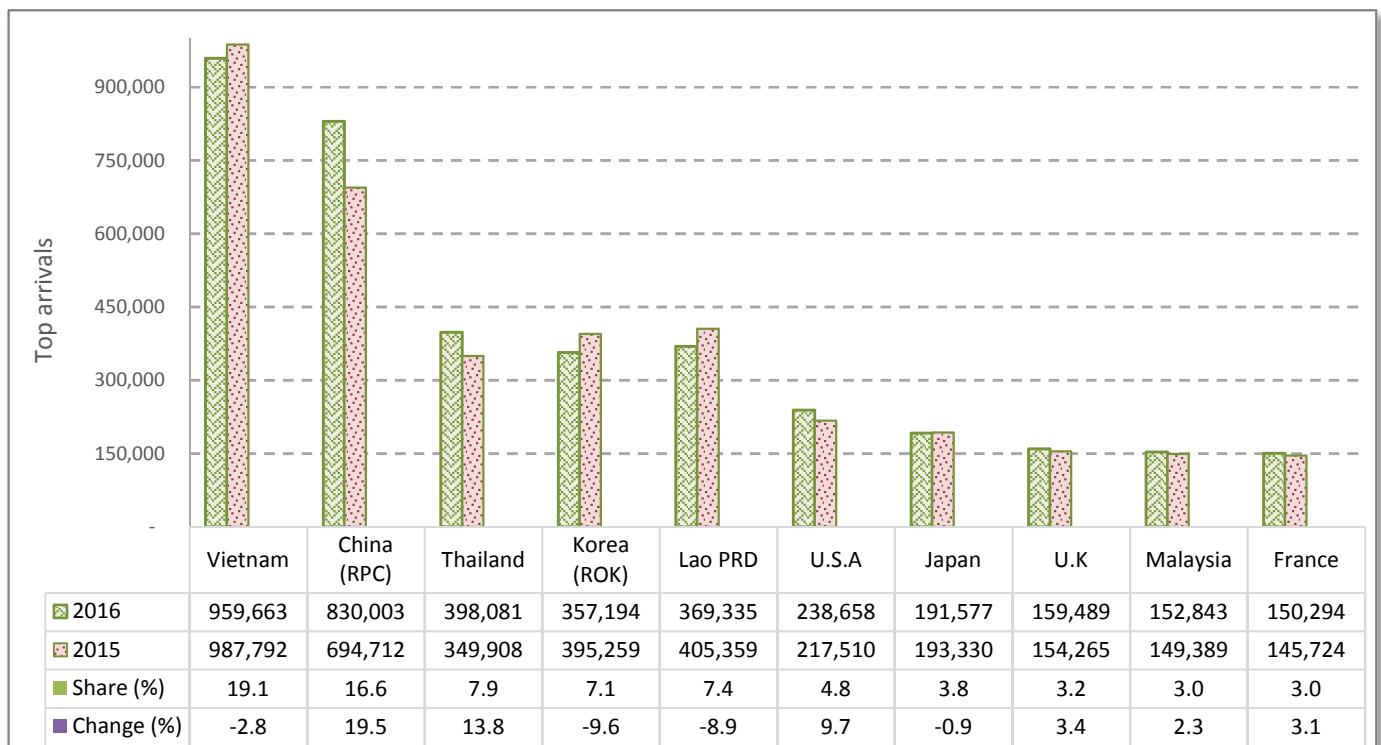
# CAMBODIA: TOURISM STATISTICS REPORT IN 2016

## I. INBOUND TOURISM

### 1. International tourist arrivals in January - December 2016

	Inbound tourism		Share (%)		Change (%)
	2015	2016	2015	2016	2016*/15
<b>Air</b>	<b>2,476,001</b>	<b>2,704,367</b>	<b>51.9</b>	<b>54.0</b>	<b>9.2</b>
Phnom Penh Int'l Airport (PNH)	1,061,034	1,164,240	22.2	23.2	9.7
Siem Reap Int'l Airport (REP)	1,414,967	1,507,039	29.6	30.1	6.5
Kong Keng (KOS)		33,088		0.7	
<b>Land and Waterways</b>	<b>2,299,230</b>	<b>2,307,345</b>	<b>48.1</b>	<b>46.0</b>	<b>0.4</b>
Land	2,151,138	2,153,932	45.0	43.0	0.1
Waterways	148,092	153,413	3.1	3.1	3.6
<b>Total</b>	<b>4,775,231</b>	<b>5,011,712</b>	<b>100.0</b>	<b>100.0</b>	<b>5.0</b>

### 2. Top ten markets arrivals in January - December 2016



## II. OUTBOUND TOURISM

### Outbound tourism in January - December 2016

	Outbound tourism		Change (%)
	2015	2016	2016*/15
Cambodian Outbound Tourists	1,194,018	1,434,030	20.1
International Tourists Departure	4,225,619	4,473,314	5.9

## III. INTERNAL TOURISM

### Foreign visitor arrivals to the regions in January - December 2016

	Arrivals		Share (%)		Change (%)
	2015	2016	2015	2016	2016*/15
Phnom Penh & Surrounding	2,650,368	2,806,438	48.6	49.1	5.9
Siem Reap Angkor	2,124,863	2,205,274	39.0	38.5	3.8
Coastal Areas	610,458	643,289	11.2	11.2	5.4
Eco-tourism Areas	63,261	66,349	1.2	1.2	4.9
<b>Total</b>	<b>5,448,950</b>	<b>5,721,350</b>	<b>100.0</b>	<b>100.0</b>	<b>5.0</b>

## International Tourist Arrivals to Cambodia by Country of Residence in January - December 2016

(by all means of transportation)

Regions Country of Residence	2015	2016			Total	Female	Share	Change
		Purposes of Visit					(%)	(%)
		Holiday	Business	Others			2016*	2016*/15
<b>Grand Total</b>	<b>4,775,231</b>	<b>4,414,633</b>	<b>342,218</b>	<b>254,861</b>	<b>5,011,712</b>	<b>2,105,367</b>	<b>100.0</b>	<b>5.0</b>
<b>Asia and the Pacific</b>	<b>3,716,688</b>	<b>3,333,971</b>	<b>297,443</b>	<b>230,091</b>	<b>3,861,505</b>	<b>1,584,117</b>	<b>77.0</b>	<b>3.9</b>
<b>ASEAN (Southeast Asia)</b>	<b>2,097,758</b>	<b>1,807,446</b>	<b>114,369</b>	<b>199,405</b>	<b>2,121,220</b>	<b>842,702</b>	<b>42.3</b>	<b>1.1</b>
Brunei Darussalam	852	1,036	16	68	1,120	449	0.0	31.5
Indonesia	43,147	28,848	13,982	5,941	48,771	12,395	1.0	13.0
Lao PDR	405,359	356,165	215	12,955	369,335	196,119	7.4	-8.9
Malaysia	149,389	138,994	10,787	3,062	152,843	51,430	3.0	2.3
Myanmar	8,965	10,960	630	1,229	12,819	5,372	0.3	43.0
Philippines	84,677	83,994	11,799	12,239	108,032	55,514	2.2	27.6
Singapore	67,669	64,394	3,429	2,733	70,556	22,966	1.4	4.3
Thailand	349,908	343,204	20,734	34,143	398,081	132,214	7.9	13.8
Vietnam	987,792	779,851	52,777	127,035	959,663	366,243	19.1	-2.8
<b>Northeast Asia</b>	<b>1,408,665</b>	<b>1,310,840</b>	<b>170,123</b>	<b>19,438</b>	<b>1,500,401</b>	<b>641,436</b>	<b>29.9</b>	<b>6.5</b>
China	694,712	709,436	109,411	11,156	830,003	368,631	16.6	19.5
Hong Kong (China)	14,787	15,519	234	227	15,980	7,078	0.3	8.1
Japan	193,330	164,067	24,108	3,402	191,577	73,058	3.8	-0.9
Korea (ROK)	395,259	334,910	17,977	4,307	357,194	151,173	7.1	-9.6
Macau (China)	392	307	30	67	404	106	0.0	3.1
Mongolia	458	381	42	55	478	259	0.0	4.4
Taiwan (China)	109,727	86,220	18,321	224	104,765	41,131	2.1	-4.5
<b>Southern Asia</b>	<b>44,890</b>	<b>44,543</b>	<b>5,302</b>	<b>5,065</b>	<b>54,910</b>	<b>15,099</b>	<b>1.1</b>	<b>22.3</b>
Afghanistan	121	113	7	38	158	39	0.0	30.6
Bangladesh	2,057	1,253	387	211	1,851	292	0.0	-10.0
Bhutan	229	147	7	72	226	71	0.0	-1.3
India	36,671	38,301	3,467	4,363	46,131	13,303	0.9	25.8
Nepal	2,358	2,041	349	115	2,505	587	0.0	6.2
Pakistan	1,521	1,073	436	118	1,627	270	0.0	7.0
Sri Lanka	1,933	1,615	649	148	2,412	537	0.0	24.8
<b>Oceania</b>	<b>157,960</b>	<b>162,676</b>	<b>7,414</b>	<b>1,743</b>	<b>171,833</b>	<b>79,700</b>	<b>3.4</b>	<b>8.8</b>
Australia	134,748	139,000	6,259	1,547	146,806	68,006	2.9	8.9
Fiji	191	166	28	36	230	82	0.0	20.4
New Zealand	23,021	23,510	1,127	160	24,797	11,612	0.5	7.7
Other Asia & the Pacific	7,415	8,466	235	4,440	13,141	5,180	0.3	77.2
<b>Europe</b>	<b>719,134</b>	<b>724,627</b>	<b>29,750</b>	<b>14,118</b>	<b>768,495</b>	<b>347,961</b>	<b>15.3</b>	<b>6.9</b>
<b>Northern Europe</b>	<b>211,657</b>	<b>205,667</b>	<b>9,474</b>	<b>2,551</b>	<b>217,692</b>	<b>93,918</b>	<b>4.3</b>	<b>2.9</b>
Denmark	11,553	10,899	392	171	11,462	4,911	0.2	-0.8
Finland	7,246	6,239	299	101	6,639	2,631	0.1	-8.4
Iceland	727	772	14	29	815	331	0.0	12.1
Ireland	11,200	11,397	442	104	11,943	5,593	0.2	6.6
Norway	9,521	9,307	255	104	9,666	4,305	0.2	1.5
Sweden	17,145	16,819	656	203	17,678	7,340	0.4	3.1
United Kingdom	154,265	150,234	7,416	1,839	159,489	68,807	3.2	3.4
<b>Western Europe</b>	<b>319,069</b>	<b>326,716</b>	<b>14,554</b>	<b>5,462</b>	<b>346,732</b>	<b>155,626</b>	<b>6.9</b>	<b>8.7</b>
Austria	10,080	10,887	233	83	11,203	4,965	0.2	11.1
Belgium	17,452	16,957	747	343	18,047	7,722	0.4	3.4
France	145,724	139,007	8,628	2,659	150,294	68,023	3.0	3.1
Germany	94,040	104,637	2,559	1,588	108,784	48,875	2.2	15.7
Luxembourg	690	823	14	22	859	322	0.0	24.5
Monaco	89	55	5	18	78	15	0.0	-12.4
Netherlands	29,015	29,107	1,339	439	30,885	13,953	0.6	6.4
Switzerland	21,979	25,243	1,029	310	26,582	11,751	0.5	20.9
<b>Central / Eastern Europe</b>	<b>99,099</b>	<b>94,938</b>	<b>2,885</b>	<b>1,868</b>	<b>99,691</b>	<b>51,046</b>	<b>2.0</b>	<b>0.6</b>
Bulgaria	1,771	1,723	40	74	1,837	896	0.0	3.7
Czech Republic	5,603	5,584	99	78	5,761	2,619	0.1	2.8
Estonia	1,952	1,824	40	25	1,889	821	0.0	-3.2
Hungary	4,190	4,476	138	68	4,682	2,275	0.1	11.7
Kazakhstan	2,235	1,513	235	24	1,772	878	0.0	-20.7
Kyrgyzstan	161	133	20	22	175	78	0.0	8.7
Latvia	1,081	962	38	23	1,023	451	0.0	-5.4
Lithuania	1,861	2,105	77	29	2,211	1,107	0.0	18.8
Poland	14,008	15,541	256	115	15,912	7,888	0.3	13.6
Romania	2,414	2,450	70	100	2,620	1,409	0.1	8.5
Russian Federation	55,500	51,093	1,522	549	53,164	28,476	1.1	-4.2
Slovakia	2,266	2,633	66	41	2,740	1,302	0.1	20.9
Ukraine	5,322	4,498	232	684	5,414	2,650	0.1	1.7
Uzbekistan	735	403	52	36	491	196	0.0	-33.2

Source: Statistics and Tourism Information Department, MOT

## International Tourist Arrivals to Cambodia by Country of Residence in January - December 2016

(by all means of transportation)

Regions Country of Residence	2015	2016			Total	Female	Share	Change
		Purposes of Visit					(%)	(%)
		Holiday	Business	Others			2016*	2016*/15
<b>Grand Total</b>	<b>4,775,231</b>	<b>4,414,633</b>	<b>342,218</b>	<b>254,861</b>	<b>5,011,712</b>	<b>2,105,367</b>	<b>100.0</b>	<b>5.0</b>
<b>Southern Europe</b>	<b>84,254</b>	<b>91,755</b>	<b>2,658</b>	<b>1,648</b>	<b>96,061</b>	<b>44,080</b>	<b>1.9</b>	<b>14.0</b>
Croatia	1,304	1,090	38	85	1,213	541	0.0	-7.0
Greece	1,595	1,465	77	110	1,652	680	0.0	3.6
Italy	32,177	34,124	1,186	484	35,794	15,458	0.7	11.2
Malta	462	479	8	25	512	220	0.0	10.8
Portugal	5,947	7,207	179	140	7,526	3,704	0.2	26.6
Serbia	863	732	35	285	1,052	477	0.0	21.9
Slovenia	1,257	1,138	60	20	1,218	568	0.0	-3.1
Spain	34,847	39,683	591	197	40,471	19,851	0.8	16.1
Turkey	5,802	5,837	484	302	6,623	2,581	0.1	14.2
Other Europe	5,055	5,551	179	2,589	8,319	3,291	0.2	64.6
<b>Americas</b>	<b>315,526</b>	<b>331,396</b>	<b>12,794</b>	<b>8,852</b>	<b>353,042</b>	<b>162,534</b>	<b>7.0</b>	<b>11.9</b>
<b>North America</b>	<b>281,472</b>	<b>288,612</b>	<b>12,233</b>	<b>6,829</b>	<b>307,674</b>	<b>140,753</b>	<b>6.1</b>	<b>9.3</b>
Canada	56,834	57,595	2,503	617	60,715	28,512	1.2	6.8
Mexico	7,128	8,109	67	125	8,301	4,219	0.2	16.5
United States	217,510	222,908	9,663	6,087	238,658	108,022	4.8	9.7
<b>Central America</b>	<b>720</b>	<b>764</b>	<b>35</b>	<b>81</b>	<b>880</b>	<b>351</b>	<b>0.0</b>	<b>22.2</b>
Costa Rica	465	553	9	19	581	272	0.0	24.9
Honduras	112	135	18	38	191	40	0.0	70.5
Jamaica	143	76	8	24	108	39	0.0	-24.5
<b>South America</b>	<b>29,706</b>	<b>38,425</b>	<b>409</b>	<b>833</b>	<b>39,667</b>	<b>19,464</b>	<b>0.8</b>	<b>33.5</b>
Argentina	7,870	13,380	55	62	13,497	6,654	0.3	71.5
Brazil	10,618	12,186	201	139	12,526	6,138	0.2	18.0
Chile	4,968	6,108	39	61	6,208	3,210	0.1	25.0
Colombia	2,903	3,405	66	39	3,510	1,746	0.1	20.9
Ecuador	560	569	14	29	612	298	0.0	9.3
Peru	1,060	1,218	12	449	1,679	647	0.0	58.4
Uruguay	1,004	1,131	10	25	1,166	567	0.0	16.1
Venezuela	723	428	12	29	469	204	0.0	-35.1
Other America	3,628	3,595	117	1,109	4,821	1,966	0.1	32.9
<b>Africa</b>	<b>9,238</b>	<b>8,416</b>	<b>1,498</b>	<b>1,219</b>	<b>11,133</b>	<b>4,373</b>	<b>0.2</b>	<b>20.5</b>
<b>North Africa</b>	<b>843</b>	<b>878</b>	<b>65</b>	<b>81</b>	<b>1,024</b>	<b>411</b>	<b>0.0</b>	<b>21.5</b>
Morocco	505	430	50	29	509	212	0.0	0.8
Sudan	131	94	3	26	123	25	0.0	-6.1
Tunisia	207	354	12	26	392	174	0.0	89.4
<b>Subsaharan Africa</b>	<b>7,542</b>	<b>6,650</b>	<b>1,378</b>	<b>853</b>	<b>8,881</b>	<b>3,544</b>	<b>0.2</b>	<b>17.8</b>
Cameroon	202	90	15	15	120	36	0.0	-40.6
Congo	107	74	9	27	110	32	0.0	2.8
Ghana	93	100	16	74	190	41	0.0	104.3
Kenya	344	344	30	43	417	202	0.0	21.2
Liberia	55	29	2	15	46	8	0.0	-16.4
Nigeria	1,069	625	841	41	1,507	141	0.0	41.0
South Africa	5,336	5,036	423	284	5,743	2,856	0.1	7.6
Tanzania	93	120	8	295	423	70	0.0	354.8
Uganda	121	113	6	16	135	59	0.0	11.6
Zimbabwe	122	119	28	43	190	99	0.0	55.7
Other Africa	853	888	55	285	1,228	418	0.0	44.0
<b>Middle East</b>	<b>14,645</b>	<b>16,223</b>	<b>733</b>	<b>581</b>	<b>17,537</b>	<b>6,382</b>	<b>0.3</b>	<b>19.7</b>
Egypt	587	606	61	29	696	201	0.0	18.6
Iran	525	532	34	34	600	180	0.0	14.3
Iraq	169	154	14	35	203	24	0.0	20.1
Israel	9,557	10,885	241	54	11,180	4,911	0.2	17.0
Jordan	340	789	213	28	1,030	210	0.0	202.9
Kuwait	916	686	9	33	728	54	0.0	-20.5
Oman	214	193	2	17	212	40	0.0	-0.9
Palestine	84	80	7	16	103	28	0.0	22.6
Qatar	117	64	6	17	87	18	0.0	-25.6
Saudi Arabia	307	298	18	33	349	39	0.0	13.7
Syria	260	544	65	20	629	156	0.0	141.9
United Arab Emirates	367	307	6	20	333	116	0.0	-9.3
Yemen	452	276	13	23	312	51	0.0	-31.0
Other Middle East	750	809	44	222	1,075	354	0.0	43.3

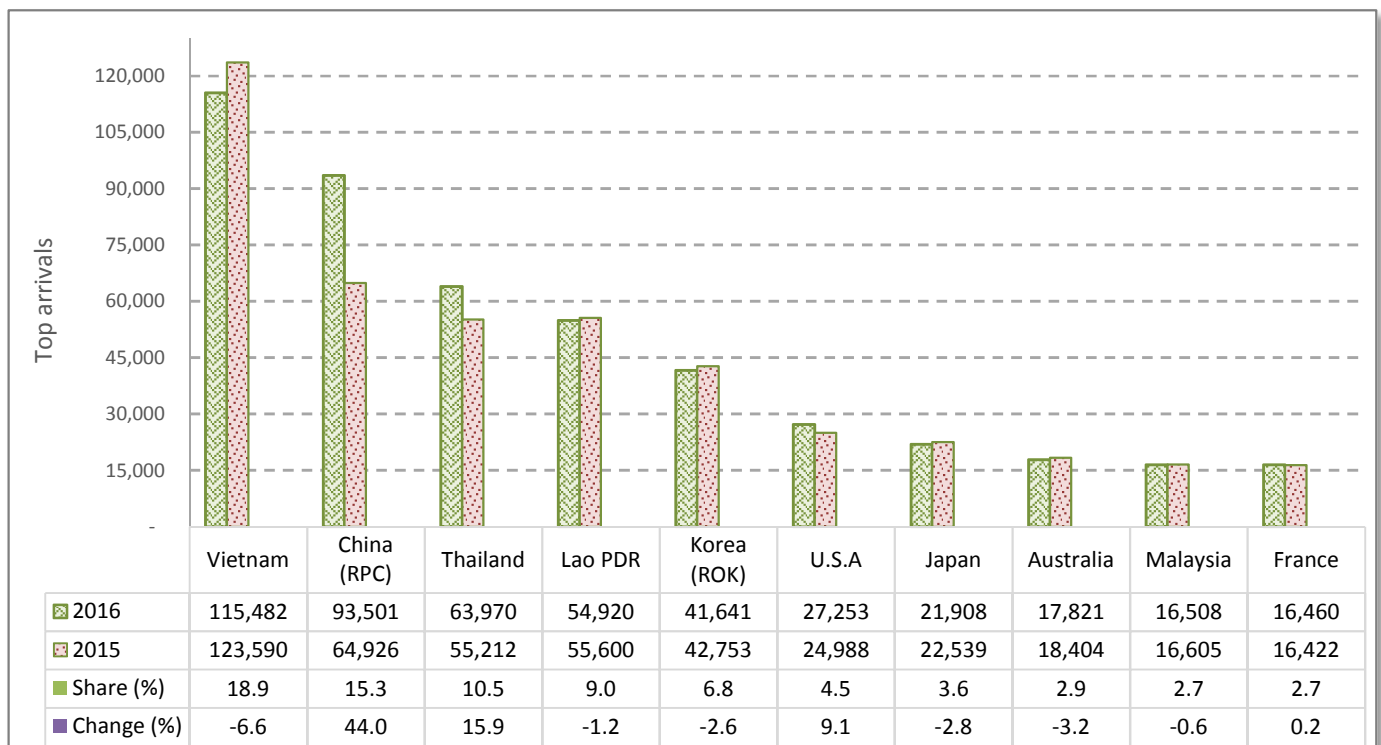
# CAMBODIA: TOURISM STATISTICS REPORT IN DECEMBER 2016

## I. INBOUND TOURISM

### 1. International tourist arrivals in December 2016

	Inbound tourism		Share (%)		Change (%)
	2015	2016	2015	2016	2016*/15
<b>Air</b>	<b>255,057</b>	<b>304,149</b>	<b>44.4</b>	<b>49.7</b>	<b>19.2</b>
Phnom Penh Int'l Airport (PNH)	99,103	117,248	17.2	19.2	18.3
Siem Reap Int'l Airport (REP)	155,954	180,302	27.1	29.5	15.6
Kong Keng (KOS)		6,599		1.1	
<b>Land and Waterways</b>	<b>319,742</b>	<b>307,385</b>	<b>55.6</b>	<b>50.3</b>	<b>-3.9</b>
Land	298,926	292,670	52.0	47.9	-2.1
Waterways	20,816	14,715	3.6	2.4	-29.3
<b>Total</b>	<b>574,799</b>	<b>611,534</b>	<b>100.0</b>	<b>100.0</b>	<b>6.4</b>

### 2. Top ten markets arrivals in December 2016



## II. OUTBOUND TOURISM

### Outbound tourism in December 2016

	Outbound tourism		Change (%)
	2015	2016	2016*/15
Cambodian Outbound Tourists	99,420	127,637	28.4
International Tourists Departure	386,136	431,179	11.7

## III. INTERNAL TOURISM

### Foreign visitor arrivals to the regions in December 2016

	Arrivals		Share (%)		Change (%)
	2015	2016	2015	2016	2016*/15
Phnom Penh & Surrounding	351,582	360,608	55.3	52.5	2.6
Siem Reap Angkor	223,217	250,926	35.1	36.5	12.4
Coastal Areas	54,603	68,304	8.6	9.9	25.1
Eco-tourism Areas	6,785	7,582	1.1	1.1	11.7
<b>Total</b>	<b>636,187</b>	<b>687,420</b>	<b>100.0</b>	<b>100.0</b>	<b>8.1</b>

## International Tourist Arrivals to Cambodia by Country of Residence in December 2016

(by all means of transportation)

Regions Country of Residence	2015	2016			Total	Female	Share	Change
		Purposes of Visit					(%)	(%)
		Holiday	Business	Others			2016*	2016*/15
<b>Grand Total</b>	<b>574,799</b>	<b>558,182</b>	<b>25,661</b>	<b>27,691</b>	<b>611,534</b>	<b>223,552</b>	<b>100.0</b>	<b>6.4</b>
<b>Asia and the Pacific</b>	<b>450,007</b>	<b>432,505</b>	<b>22,273</b>	<b>24,844</b>	<b>479,622</b>	<b>165,706</b>	<b>78.4</b>	<b>6.6</b>
<b>ASEAN (Southeast Asia)</b>	<b>277,602</b>	<b>249,101</b>	<b>8,342</b>	<b>20,521</b>	<b>277,964</b>	<b>81,272</b>	<b>45.5</b>	<b>0.1</b>
Brunei Darussalam	112	359	5	12	376	164	0.1	235.7
Indonesia	5,525	3,074	1,086	936	5,096	1,184	0.8	-7.8
Lao PDR	55,600	53,653	10	1,257	54,920	24,555	9.0	-1.2
Malaysia	16,605	15,401	859	248	16,508	6,191	2.7	-0.6
Myanmar	959	1,220	67	91	1,378	629	0.2	43.7
Philippines	9,729	7,670	918	1,466	10,054	4,795	1.6	3.3
Singapore	10,270	9,362	251	567	10,180	3,704	1.7	-0.9
Thailand	55,212	58,233	1,583	4,154	63,970	12,832	10.5	15.9
Vietnam	123,590	100,129	3,563	11,790	115,482	27,218	18.9	-6.6
<b>Northeast Asia</b>	<b>143,090</b>	<b>153,329</b>	<b>13,016</b>	<b>2,521</b>	<b>168,866</b>	<b>71,073</b>	<b>27.6</b>	<b>18.0</b>
China	64,926	83,633	8,438	1,430	93,501	41,590	15.3	44.0
Hong Kong (China)	2,804	1,905	13	35	1,953	583	0.3	-30.3
Japan	22,539	19,509	1,897	502	21,908	8,668	3.6	-2.8
Korea (ROK)	42,753	39,793	1,333	515	41,641	16,440	6.8	-2.6
Macau (China)	40	19	7	18	44	7	0.0	10.0
Mongolia	56	43	1	10	54	17	0.0	-3.6
Taiwan (China)	9,972	8,427	1,327	11	9,765	3,768	1.6	-2.1
<b>Southern Asia</b>	<b>5,547</b>	<b>6,316</b>	<b>375</b>	<b>485</b>	<b>7,176</b>	<b>2,175</b>	<b>1.2</b>	<b>29.4</b>
Afghanistan	24	14	1	2	17	4	0.0	-29.2
Bangladesh	146	95	28	26	149	12	0.0	2.1
Bhutan	55	38	1	2	41	10	0.0	-25.5
India	4,623	5,655	232	426	6,313	2,091	1.0	36.6
Nepal	359	288	30	3	321	2	0.1	-10.6
Pakistan	162	101	30	9	140	7	0.0	-13.6
Sri Lanka	178	125	53	17	195	49	0.0	9.6
<b>Oceania</b>	<b>21,643</b>	<b>20,577</b>	<b>497</b>	<b>134</b>	<b>21,208</b>	<b>9,693</b>	<b>3.5</b>	<b>-2.0</b>
Australia	18,404	17,274	435	112	17,821	8,044	2.9	-3.2
Fiji	17	18	2	3	23	7	0.0	35.3
New Zealand	3,222	3,285	60	19	3,364	1,642	0.6	4.4
Other Asia & the Pacific	2,125	3,182	43	1,183	4,408	1,493	0.7	107.4
<b>Europe</b>	<b>85,457</b>	<b>83,439</b>	<b>2,229</b>	<b>1,705</b>	<b>87,373</b>	<b>37,365</b>	<b>14.3</b>	<b>2.2</b>
<b>Northern Europe</b>	<b>23,644</b>	<b>22,395</b>	<b>672</b>	<b>203</b>	<b>23,270</b>	<b>8,636</b>	<b>3.8</b>	<b>-1.6</b>
Denmark	1,295	1,128	33	18	1,179	448	0.2	-9.0
Finland	1,284	1,282	26	6	1,314	432	0.2	2.3
Iceland	65	65	1	2	68	36	0.0	4.6
Ireland	1,002	968	25	7	1,000	436	0.2	-0.2
Norway	963	959	20	7	986	375	0.2	2.4
Sweden	2,974	2,801	45	12	2,858	1,044	0.5	-3.9
United Kingdom	16,061	15,192	522	151	15,865	5,865	2.6	-1.2
<b>Western Europe</b>	<b>40,563</b>	<b>37,335</b>	<b>1,061</b>	<b>524</b>	<b>38,920</b>	<b>16,830</b>	<b>6.4</b>	<b>-4.1</b>
Austria	1,259	1,181	13	8	1,202	477	0.2	-4.5
Belgium	2,049	2,150	64	20	2,234	937	0.4	9.0
France	16,422	15,629	622	209	16,460	7,314	2.7	0.2
Germany	14,531	12,297	206	217	12,720	5,402	2.1	-12.5
Luxembourg	109	177	1	3	181	39	0.0	66.1
Monaco	12	8	1	2	11	1	0.0	-8.3
Netherlands	3,287	3,100	91	52	3,243	1,455	0.5	-1.3
Switzerland	2,894	2,793	63	13	2,869	1,205	0.5	-0.9
<b>Central / Eastern Europe</b>	<b>11,851</b>	<b>13,106</b>	<b>268</b>	<b>193</b>	<b>13,567</b>	<b>6,741</b>	<b>2.2</b>	<b>14.5</b>
Bulgaria	273	281	3	10	294	120	0.0	7.7
Czech Republic	661	657	19	9	685	311	0.1	3.6
Estonia	341	291	4	5	300	107	0.0	-12.0
Hungary	485	537	5	11	553	278	0.1	14.0
Kazakhstan	237	287	11	1	299	119	0.0	26.2
Kyrgyzstan	18	19	1	2	22	11	0.0	22.2
Latvia	183	208	2	1	211	71	0.0	15.3
Lithuania	221	369	12	1	382	197	0.1	72.9
Poland	1,645	1,738	21	20	1,779	860	0.3	8.1
Romania	336	347	9	22	378	174	0.1	12.5
Russian Federation	6,515	7,519	156	45	7,720	4,028	1.3	18.5
Slovakia	208	233	4	6	243	125	0.0	16.8
Ukraine	664	570	20	57	647	333	0.1	-2.6
Uzbekistan	64	50	1	3	54	7	0.0	-15.6

Source: Statistics and Tourism Information Department, MOT

## International Tourist Arrivals to Cambodia by Country of Residence in December 2016

(by all means of transportation)

Regions Country of Residence	2015	2016			Total	Female	Share	Change
		Purposes of Visit					(%)	(%)
		Holiday	Business	Others			2016*	2016*/15
<b>Grand Total</b>	<b>574,799</b>	<b>558,182</b>	<b>25,661</b>	<b>27,691</b>	<b>611,534</b>	<b>223,552</b>	<b>100.0</b>	<b>6.4</b>
<b>Southern Europe</b>	<b>8,415</b>	<b>9,669</b>	<b>191</b>	<b>144</b>	<b>10,004</b>	<b>4,537</b>	<b>1.6</b>	<b>18.9</b>
Croatia	186	215	3	5	223	103	0.0	19.9
Greece	190	201	7	5	213	102	0.0	12.1
Italy	4,202	4,307	87	54	4,448	1,901	0.7	5.9
Malta	46	45	1	2	48	12	0.0	4.3
Portugal	717	927	14	16	957	484	0.2	33.5
Serbia	177	132	2	21	155	60	0.0	-12.4
Slovenia	168	179	4	1	184	90	0.0	9.5
Spain	2,198	3,012	43	15	3,070	1,521	0.5	39.7
Turkey	531	651	30	25	706	264	0.1	33.0
Other Europe	984	934	37	641	1,612	621	0.3	63.8
<b>Americas</b>	<b>35,800</b>	<b>38,845</b>	<b>980</b>	<b>856</b>	<b>40,681</b>	<b>18,927</b>	<b>6.7</b>	<b>13.6</b>
<b>North America</b>	<b>31,938</b>	<b>33,721</b>	<b>900</b>	<b>472</b>	<b>35,093</b>	<b>16,281</b>	<b>5.7</b>	<b>9.9</b>
Canada	6,095	6,502	202	58	6,762	3,023	1.1	10.9
Mexico	855	1,053	7	18	1,078	514	0.2	26.1
United States	24,988	26,166	691	396	27,253	12,744	4.5	9.1
<b>Central America</b>	<b>88</b>	<b>83</b>	<b>4</b>	<b>9</b>	<b>96</b>	<b>43</b>	<b>0.0</b>	<b>9.1</b>
Costa Rica	71	72	1	2	75	39	0.0	5.6
Honduras	6	2	2	3	7	2	0.0	16.7
Jamaica	11	9	1	4	14	2	0.0	27.3
<b>South America</b>	<b>3,105</b>	<b>4,463</b>	<b>55</b>	<b>58</b>	<b>4,576</b>	<b>2,229</b>	<b>0.7</b>	<b>47.4</b>
Argentina	801	998	5	8	1,011	497	0.2	26.2
Brazil	1,357	2,201	37	26	2,264	1,127	0.4	66.8
Chile	397	420	4	3	427	193	0.1	7.6
Colombia	271	511	3	2	516	267	0.1	90.4
Ecuador	59	60	2	3	65	31	0.0	10.2
Peru	112	145	2	8	155	76	0.0	38.4
Uruguay	46	46	1	3	50	11	0.0	8.7
Venezuela	62	82	1	5	88	27	0.0	41.9
Other America	669	578	21	317	916	374	0.1	36.9
<b>Africa</b>	<b>1,601</b>	<b>1,605</b>	<b>134</b>	<b>145</b>	<b>1,884</b>	<b>818</b>	<b>0.3</b>	<b>17.7</b>
<b>North Africa</b>	<b>100</b>	<b>91</b>	<b>3</b>	<b>15</b>	<b>109</b>	<b>38</b>	<b>0.0</b>	<b>9.0</b>
Morocco	57	41	1	7	49	15	0.0	-14.0
Sudan	8	8	1	3	12	1	0.0	50.0
Tunisia	35	42	1	5	48	22	0.0	37.1
<b>Subsaharan Africa</b>	<b>1,283</b>	<b>1,319</b>	<b>122</b>	<b>47</b>	<b>1,488</b>	<b>674</b>	<b>0.2</b>	<b>16.0</b>
Cameroon	17	7	1	2	10	3	0.0	-41.2
Congo	11	6	1	1	8	0	0.0	-27.3
Ghana	7	11	1	1	13	4	0.0	85.7
Kenya	62	69	3	1	73	33	0.0	17.7
Liberia	3	2	1	1	4	0	0.0	33.3
Nigeria	81	70	82	1	153	29	0.0	88.9
South Africa	1,057	1,115	30	32	1,177	587	0.2	11.4
Tanzania	13	13	1	2	16	5	0.0	23.1
Uganda	12	14	1	2	17	8	0.0	41.7
Zimbabwe	20	12	1	4	17	5	0.0	-15.0
Other Africa	218	195	9	83	287	106	0.0	31.7
<b>Middle East</b>	<b>1,934</b>	<b>1,788</b>	<b>45</b>	<b>141</b>	<b>1,974</b>	<b>736</b>	<b>0.3</b>	<b>2.1</b>
Egypt	66	57	6	4	67	18	0.0	1.5
Iran	91	64	1	1	66	22	0.0	-27.5
Iraq	24	26	1	3	30	1	0.0	25.0
Israel	1,250	1,238	12	2	1,252	538	0.2	0.2
Jordan	25	29	7	5	41	9	0.0	64.0
Kuwait	35	41	1	2	44	1	0.0	25.7
Oman	20	22	1	1	24	4	0.0	20.0
Palestine	10	13	1	2	16	5	0.0	60.0
Qatar	10	5	1	2	8	1	0.0	-20.0
Saudi Arabia	20	38	2	4	44	9	0.0	120.0
Syria	26	31	1	2	34	8	0.0	30.8
United Arab Emirates	12	16	1	3	20	3	0.0	66.7
Yemen	103	15	2	4	21	2	0.0	-79.6
Other Middle East	242	193	8	106	307	115	0.1	26.9