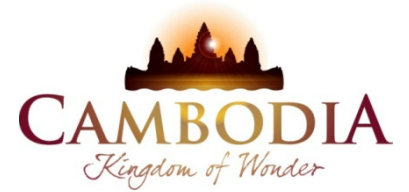




KINGDOM OF CAMBODIA  
NATION RELIGION KING



# TOURISM STATISTICS REPORT

# April 2019

**MINISTRY OF TOURISM**

Statistics and Tourism Information Department

No. A3, Street 169, Sangkat Veal Vong, Khan 7 Makara, Phnom Penh, Cambodia.

Fax: +855 23 885003

E-mail: [kong@tourism.gov.kh](mailto:kong@tourism.gov.kh)

Web site: [www.tourism.gov.kh](http://www.tourism.gov.kh)

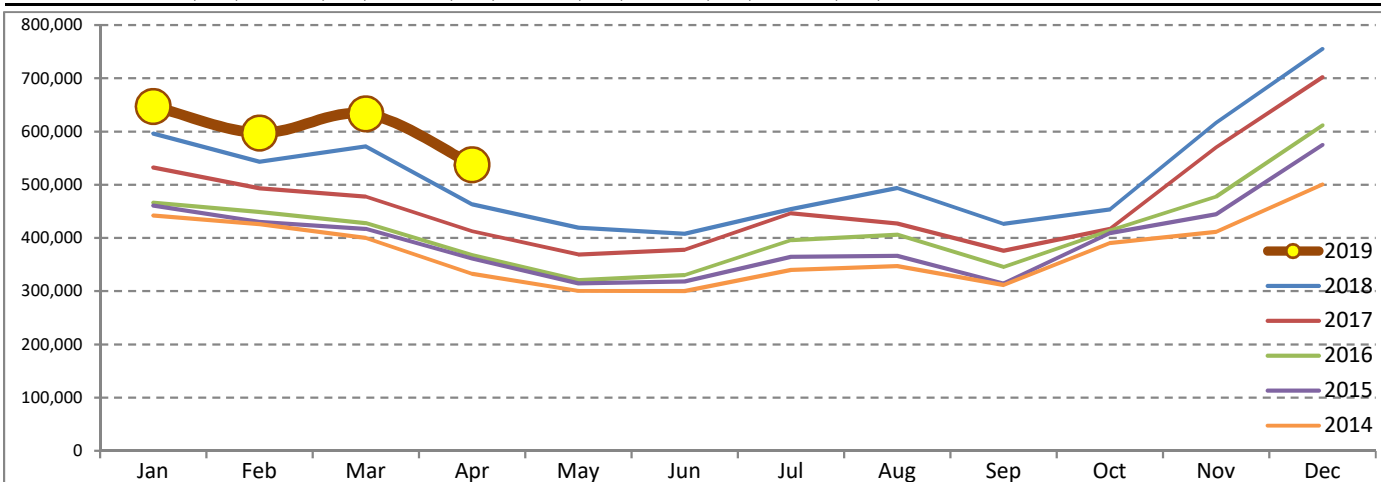
# Tourism Highlights

## Int'l Tourist Arrivals, Average Length of Stays, Hotel Occupancy & Int'l Tourism Receipts 1993 - 2018

Years	Int'l Tourist Arrivals		Average Length	Hotel Occupancy	Int'l Tourism Receipts
	Number	Change (%)	of Stays (Days)	(%)	(Million US\$)
1993	118,183	-	N/A	N/A	N/A
1994	176,617	49.4	N/A	N/A	N/A
1995	219,680	24.4	8.00	37.0	100
1996	260,489	18.6	7.50	40.0	118
1997	218,843	-16.0	6.40	30.0	103
1998	286,524	30.9	5.20	40.0	166
1999	367,743	28.3	5.50	44.0	190
2000	466,365	26.8	5.50	45.0	228
2001	604,919	29.7	5.50	48.0	304
2002	786,524	30.0	5.80	50.0	379
2003	701,014	-10.9	5.50	50.0	347
2004	1,055,202	50.5	6.30	52.0	578
2005	1,421,615	34.7	6.30	52.0	832
2006	1,700,041	19.6	6.50	54.8	1,049
2007	2,015,128	18.5	6.50	54.8	1,400
2008	2,125,465	5.5	6.65	62.7	1,595
2009	2,161,577	1.7	6.45	63.6	1,561
2010	2,508,289	16.0	6.45	65.7	1,786
2011	2,881,862	14.9	6.50	66.2	1,912
2012	3,584,307	24.4	6.30	68.5	2,210
2013	4,210,165	17.5	6.75	69.5	2,547
2014	4,502,775	7.0	6.50	67.6	2,736
2015	4,775,231	6.1	6.80	70.2	3,012
2016	5,011,712	5.0	6.30	68.9	3,212
2017	5,602,157	11.8	6.60	71.3	3,638
2018	6,201,077	10.7	7.00	72.2	4,375

### International Tourist Arrivals to Cambodia

Months	2014	2015	2016	2017	2018	2019	Change (%)				
							15/14	16/15	17/16	18/17	19*/18
<b>Q1</b>	<b>1,267,922</b>	<b>1,307,836</b>	<b>1,342,477</b>	<b>1,502,896</b>	<b>1,711,253</b>	<b>1,877,853</b>	<b>3.1</b>	<b>2.6</b>	<b>11.9</b>	<b>13.9</b>	<b>9.7</b>
Jan	442,045	460,577	466,086	532,206	596,241	647,206	4.2	1.2	14.2	12.0	8.5
Feb	425,801	430,207	448,468	493,316	542,937	597,483	1.0	4.2	10.0	10.1	10.0
Mar	400,076	417,052	427,923	477,374	572,075	633,164	4.2	2.6	11.6	19.8	10.7
<b>Q2</b>	<b>933,446</b>	<b>994,154</b>	<b>1,018,455</b>	<b>1,159,783</b>	<b>1,290,407</b>	<b>537,656</b>	<b>6.5</b>	<b>2.4</b>	<b>13.9</b>	<b>11.3</b>	
Apr	332,690	361,139	367,684	412,925	463,423	537,656	8.6	1.8	12.3	12.2	16.0
May	300,302	314,748	320,601	368,809	419,171		4.8	1.9	15.0	13.7	
Jun	300,454	318,267	330,170	378,049	407,813		5.9	3.7	14.5	7.9	
<b>Q3</b>	<b>998,690</b>	<b>1,044,880</b>	<b>1,147,483</b>	<b>1,250,082</b>	<b>1,374,373</b>	<b>0</b>	<b>4.6</b>	<b>9.8</b>	<b>8.9</b>	<b>9.9</b>	
Jul	340,091	364,325	395,761	446,627	454,056		7.1	8.6	12.9	1.7	
Aug	347,211	366,096	406,214	427,224	494,043		5.4	11.0	5.2	15.6	
Sep	311,388	314,459	345,508	376,231	426,274		1.0	9.9	8.9	13.3	
<b>Q4</b>	<b>1,302,717</b>	<b>1,428,361</b>	<b>1,503,297</b>	<b>1,689,396</b>	<b>1,825,044</b>	<b>0</b>	<b>9.6</b>	<b>5.2</b>	<b>12.4</b>	<b>8.0</b>	
Oct	390,637	408,922	414,077	417,039	453,370		4.7	1.3	0.7	8.7	
Nov	411,501	444,640	477,686	570,471	616,549		8.1	7.4	19.4	8.1	
Dec	500,579	574,799	611,534	701,886	755,125		14.8	6.4	14.8	7.6	
<b>Total</b>	<b>4,502,775</b>	<b>4,775,231</b>	<b>5,011,712</b>	<b>5,602,157</b>	<b>6,201,077</b>	<b>2,415,509</b>	<b>6.1</b>	<b>5.0</b>	<b>11.8</b>	<b>10.7</b>	<b>11.1</b>



Source: Tourism Statistics Department, MOT

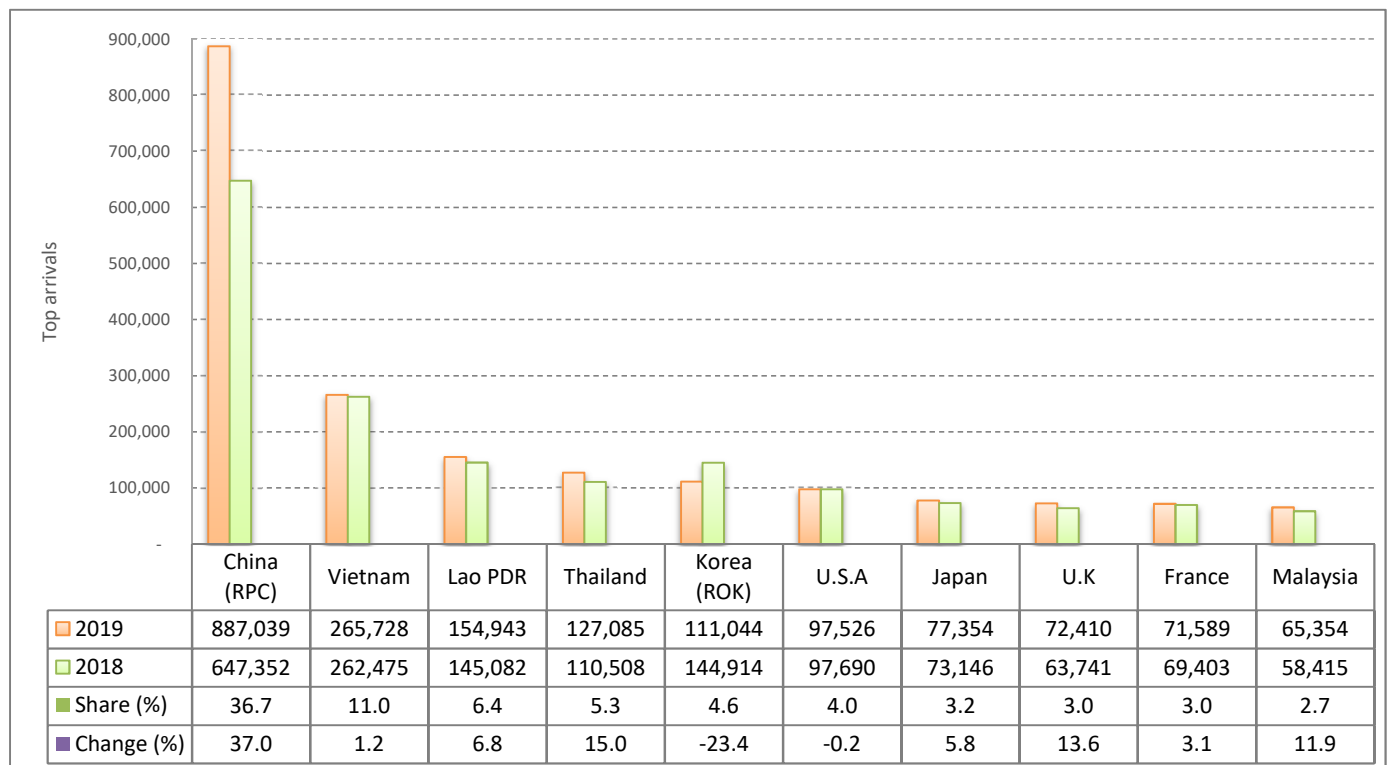
# CAMBODIA: TOURISM STATISTICS REPORT IN THE FIRST FOUR MONTHS 2019

## I. INBOUND TOURISM

### 1. International tourist arrivals in January - April 2019

	Inbound tourism			Share (%) 2019*	Change (%)	
	2017	2018	2019		18/17	2019*/18
<b>Air</b>	<b>1,165,201</b>	<b>1,455,183</b>	<b>1,676,058</b>	<b>69.4</b>	<b>24.9</b>	<b>15.2</b>
Phnom Penh Int'l Airport (PNH)	455,675	642,980	758,786	31.4	41.1	18.0
Siem Reap Int'l Airport (REP)	682,480	768,801	730,074	30.2	12.6	-5.0
Kong Keng (KOS)	27,046	43,402	187,198	7.7	60.5	331.3
<b>Land and Waterways</b>	<b>750,620</b>	<b>719,493</b>	<b>739,451</b>	<b>30.6</b>	<b>-4.1</b>	<b>2.8</b>
Land	670,478	653,833	659,561	27.3	-2.5	0.9
Waterways	80,142	65,660	79,890	3.3	-18.1	21.7
<b>Total</b>	<b>1,915,821</b>	<b>2,174,676</b>	<b>2,415,509</b>	<b>100.0</b>	<b>13.5</b>	<b>11.1</b>

### 2. Top ten markets arrivals in January - April 2019



## II. OUTBOUND TOURISM

### Outbound tourism in January - April 2019

	Outbound tourism			Change (%)	
	2017	2018	2019	18/17	2019*/18
Cambodian Outbound Tourists	545,216	652,566	660,364	19.7	1.2
International Tourists Departure	1,764,262	2,083,659	2,169,029	18.1	4.1

## III. INTERNAL TOURISM

### Foreign visitor arrivals to the regions in January - April 2019

	Arrivals			Share (%) 2019*	Change (%)	
	2017	2018	2019		18/17	2019*/18
Phnom Penh & Surrounding	970,196	1,123,674	1,442,204	50.4	15.8	28.3
Siem Reap Angkor	945,625	1,050,992	973,305	34.0	11.1	-7.4
Coastal Areas	284,622	331,433	412,103	14.4	16.4	24.3
Eco-tourism Areas	28,356	28,410	32,359	1.1	0.2	13.9
<b>Total</b>	<b>2,228,799</b>	<b>2,534,509</b>	<b>2,859,971</b>	<b>100.0</b>	<b>13.7</b>	<b>12.8</b>

## International Tourist Arrivals to Cambodia by Country of Residence in January - April 2019

(by all means of transportation)

Regions Country of Residence	2018	2019			Total	Female	Share	Change
		Purposes of Visit					2019*	2019*/18
		Holiday	Business	Others			(%)	(%)
<b>Grand Total</b>	<b>2,174,676</b>	<b>1,902,576</b>	<b>441,477</b>	<b>71,456</b>	<b>2,415,509</b>	<b>980,628</b>	<b>100.0</b>	<b>11.1</b>
<b>Asia and the Pacific</b>	<b>1,663,785</b>	<b>1,452,075</b>	<b>424,185</b>	<b>38,732</b>	<b>1,914,992</b>	<b>749,387</b>	<b>79.3</b>	<b>15.1</b>
<b>ASEAN (Southeast Asia)</b>	<b>655,969</b>	<b>628,492</b>	<b>53,839</b>	<b>20,146</b>	<b>702,477</b>	<b>270,793</b>	<b>29.1</b>	<b>7.1</b>
Brunei Darussalam	270	478	8	13	499	259	0.0	84.8
Indonesia	18,264	12,240	8,176	827	21,243	6,078	0.9	16.3
Lao PDR	145,082	148,507	413	6,023	154,943	51,017	6.4	6.8
Malaysia	58,415	57,235	6,875	1,244	65,354	19,226	2.7	11.9
Myanmar	7,699	6,814	1,946	428	9,188	3,584	0.4	19.3
Philippines	28,336	26,878	4,685	726	32,289	19,254	1.3	14.0
Singapore	24,920	23,722	1,792	634	26,148	7,620	1.1	4.9
Thailand	110,508	112,308	9,468	5,309	127,085	42,236	5.3	15.0
Vietnam	262,475	240,310	20,476	4,942	265,728	121,519	11.0	1.2
<b>Northeast Asia</b>	<b>918,146</b>	<b>754,736</b>	<b>364,513</b>	<b>9,719</b>	<b>1,128,968</b>	<b>447,338</b>	<b>46.7</b>	<b>23.0</b>
China	647,352	545,199	338,509	3,331	887,039	347,999	36.7	37.0
Hong Kong (China)	3,598	1,174	51	45	1,270	264	0.1	-64.7
Japan	73,146	66,532	9,121	1,701	77,354	30,727	3.2	5.8
Korea (ROK)	144,914	101,225	6,877	2,942	111,044	47,607	4.6	-23.4
Macau (China)	117	87	24	13	124	22	0.0	6.0
Mongolia	329	530	26	28	584	270	0.0	77.5
Taiwan (China)	48,690	39,989	9,905	1,659	51,553	20,449	2.1	5.9
<b>Southern Asia</b>	<b>25,563</b>	<b>24,892</b>	<b>3,119</b>	<b>374</b>	<b>28,385</b>	<b>7,633</b>	<b>1.2</b>	<b>11.0</b>
Afghanistan	83	85	11	8	104	32	0.0	25.3
Bangladesh	973	1,473	279	64	1,816	199	0.1	86.6
Bhutan	48	97	6	15	118	42	0.0	145.8
India	20,868	19,561	2,061	148	21,770	6,344	0.9	4.3
Iran	543	479	21	11	511	192	0.0	-5.9
Nepal	912	969	175	63	1,207	371	0.0	32.3
Pakistan	995	1,252	213	32	1,497	186	0.1	50.5
Sri Lanka	1,141	976	353	33	1,362	267	0.1	19.4
<b>Oceania</b>	<b>57,630</b>	<b>43,221</b>	<b>2,534</b>	<b>8,240</b>	<b>53,995</b>	<b>23,160</b>	<b>2.2</b>	<b>-6.3</b>
Australia	48,400	37,000	2,173	6,455	45,628	19,655	1.9	-5.7
Fiji	85	92	23	27	142	37	0.0	67.1
New Zealand	9,145	6,129	338	1,758	8,225	3,468	0.3	-10.1
Other Asia & the Pacific	6,477	734	180	253	1,167	463	0.0	-82.0
<b>Europe</b>	<b>354,409</b>	<b>324,585</b>	<b>11,183</b>	<b>12,279</b>	<b>348,047</b>	<b>158,230</b>	<b>14.4</b>	<b>-1.8</b>
<b>Northern Europe</b>	<b>92,027</b>	<b>92,852</b>	<b>3,449</b>	<b>1,090</b>	<b>97,391</b>	<b>42,650</b>	<b>4.0</b>	<b>5.8</b>
Denmark	6,292	6,061	156	69	6,286	2,993	0.3	-0.1
Finland	3,534	2,858	103	49	3,010	1,340	0.1	-14.8
Iceland	420	398	12	19	429	203	0.0	2.1
Ireland	4,444	3,854	194	51	4,099	1,735	0.2	-7.8
Norway	5,160	3,743	104	77	3,924	1,890	0.2	-24.0
Sweden	8,436	6,816	237	180	7,233	3,102	0.3	-14.3
United Kingdom	63,741	69,122	2,643	645	72,410	31,387	3.0	13.6
<b>Western Europe</b>	<b>148,639</b>	<b>133,441</b>	<b>5,217</b>	<b>9,907</b>	<b>148,565</b>	<b>64,853</b>	<b>6.2</b>	<b>0.0</b>
Austria	4,984	4,979	109	94	5,182	2,395	0.2	4.0
Belgium	7,489	7,266	273	265	7,804	3,678	0.3	4.2
France	69,403	60,391	3,146	8,052	71,589	30,998	3.0	3.1
Germany	45,903	42,379	897	641	43,917	18,938	1.8	-4.3
Luxembourg	348	261	21	19	301	122	0.0	-13.5
Monaco	41	19	6	8	33	8	0.0	-19.5
Netherlands	11,203	10,480	455	308	11,243	4,991	0.5	0.4
Switzerland	9,268	7,666	310	520	8,496	3,723	0.4	-8.3
<b>Central / Eastern Europe</b>	<b>65,626</b>	<b>55,269</b>	<b>1,263</b>	<b>711</b>	<b>57,243</b>	<b>29,626</b>	<b>2.4</b>	<b>-12.8</b>
Bulgaria	1,248	1,561	43	41	1,645	692	0.1	31.8
Czech Republic	3,966	3,472	44	49	3,565	1,550	0.1	-10.1
Estonia	1,495	622	30	17	669	299	0.0	-55.3
Hungary	2,892	3,343	52	25	3,420	1,690	0.1	18.3
Kazakhstan	950	911	118	34	1,063	484	0.0	11.9
Kyrgyzstan	104	115	17	13	145	91	0.0	39.4
Latvia	700	407	25	11	443	228	0.0	-36.7
Lithuania	1,232	1,154	21	12	1,187	647	0.0	-3.7
Poland	9,255	9,311	102	46	9,459	4,664	0.4	2.2
Romania	1,714	1,647	68	59	1,774	890	0.1	3.5
Russian Federation	36,695	27,393	494	301	28,188	15,345	1.2	-23.2
Slovakia	1,869	1,476	38	35	1,549	734	0.1	-17.1
Ukraine	3,263	3,667	173	34	3,874	2,206	0.2	18.7
Uzbekistan	243	190	38	34	262	106	0.0	7.8

## International Tourist Arrivals to Cambodia by Country of Residence in January - April 2019

(by all means of transportation)

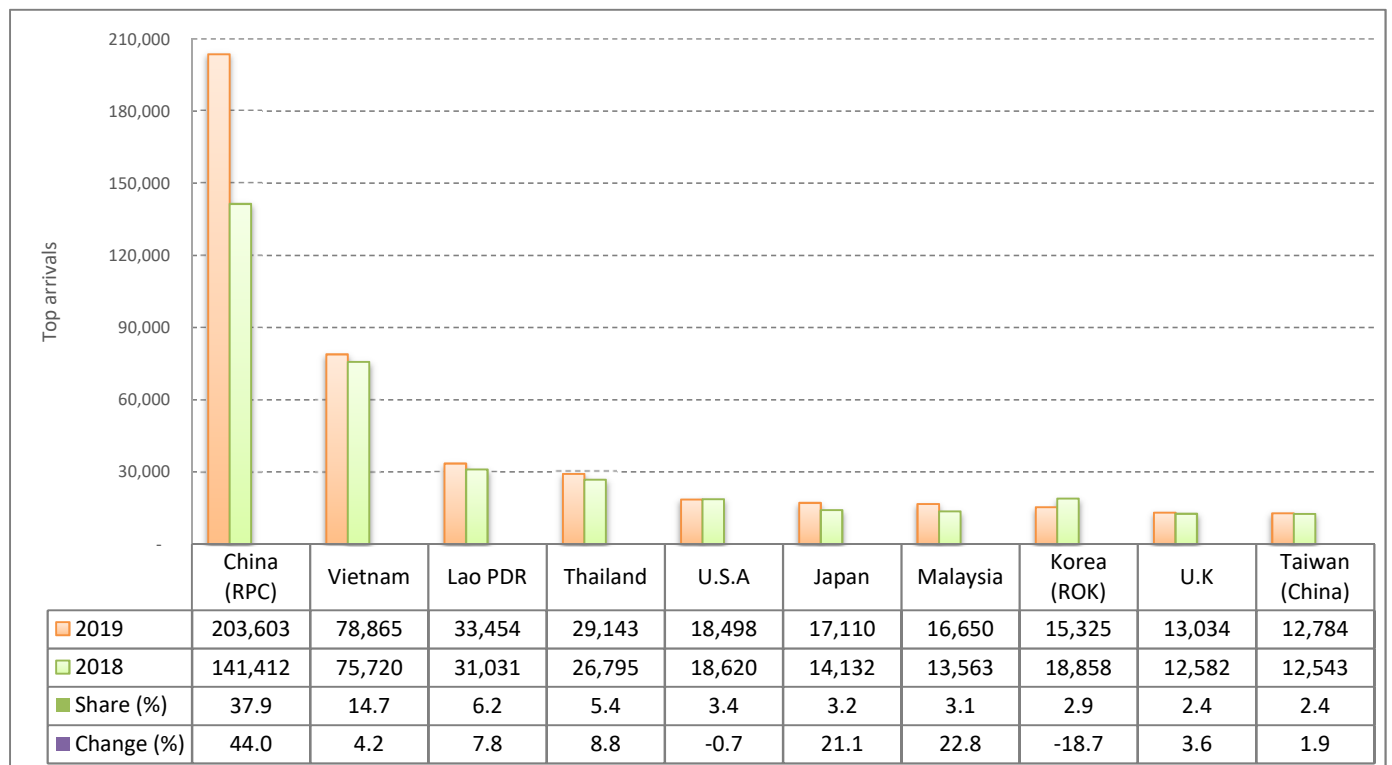
Regions Country of Residence	2018	2019			Total	Female	Share	Change
		Purposes of Visit					2019*	2019*/18
		Holiday	Business	Others			(%)	(%)
<b>Grand Total</b>	<b>2,174,676</b>	<b>1,902,576</b>	<b>441,477</b>	<b>71,456</b>	<b>2,415,509</b>	<b>980,628</b>	<b>100.0</b>	<b>11.1</b>
<b>Southern Europe</b>	<b>33,611</b>	<b>32,362</b>	<b>967</b>	<b>370</b>	<b>33,699</b>	<b>15,967</b>	<b>1.4</b>	<b>0.3</b>
Croatia	1,010	766	35	23	824	379	0.0	-18.4
Greece	876	719	38	29	786	344	0.0	-10.3
Italy	15,433	16,673	444	145	17,262	8,185	0.7	11.9
Malta	174	191	10	10	211	86	0.0	21.3
Portugal	2,721	3,107	71	30	3,208	1,621	0.1	17.9
Serbia	631	609	20	29	658	376	0.0	4.3
Slovenia	766	753	40	21	814	297	0.0	6.3
Spain	12,000	9,544	309	83	9,936	4,679	0.4	-17.2
<b>East Mediterranean Europe</b>	<b>10,750</b>	<b>10,285</b>	<b>203</b>	<b>129</b>	<b>10,617</b>	<b>4,917</b>	<b>0.4</b>	<b>-1.2</b>
Israel	6,855	7,830	75	46	7,951	3,758	0.3	16.0
Turkey	3,895	2,455	128	83	2,666	1,159	0.1	-31.6
Other Europe	3,756	376	84	72	532	217	0.0	-85.8
<b>Americas</b>	<b>150,553</b>	<b>119,885</b>	<b>5,389</b>	<b>20,151</b>	<b>145,425</b>	<b>70,278</b>	<b>6.0</b>	<b>-3.4</b>
<b>North America</b>	<b>128,121</b>	<b>104,629</b>	<b>5,043</b>	<b>19,884</b>	<b>129,556</b>	<b>61,609</b>	<b>5.4</b>	<b>1.1</b>
Canada	27,368	24,473	1,182	2,998	28,653	13,242	1.2	4.7
Mexico	3,063	3,255	58	64	3,377	1,724	0.1	10.3
United States of America	97,690	76,901	3,803	16,822	97,526	46,643	4.0	-0.2
<b>Central America</b>	<b>665</b>	<b>464</b>	<b>32</b>	<b>28</b>	<b>524</b>	<b>263</b>	<b>0.0</b>	<b>-21.2</b>
Costa Rica	552	346	12	13	371	175	0.0	-32.8
Honduras	66	68	12	7	87	54	0.0	31.8
Jamaica	47	50	8	8	66	34	0.0	40.4
<b>South America</b>	<b>20,030</b>	<b>14,605</b>	<b>265</b>	<b>204</b>	<b>15,074</b>	<b>8,287</b>	<b>0.6</b>	<b>-24.7</b>
Argentina	7,237	3,365	24	30	3,419	1,814	0.1	-52.8
Brazil	6,192	4,970	77	37	5,084	2,785	0.2	-17.9
Chile	2,715	2,694	72	26	2,792	1,495	0.1	2.8
Colombia	1,806	1,453	41	34	1,528	832	0.1	-15.4
Ecuador	288	224	13	23	260	136	0.0	-9.7
Peru	750	578	13	20	611	407	0.0	-18.5
Uruguay	906	1,180	8	18	1,206	718	0.0	33.1
Venezuela	136	141	17	16	174	100	0.0	27.9
Other America	1,737	187	49	35	271	119	0.0	-84.4
<b>Africa</b>	<b>4,232</b>	<b>4,159</b>	<b>566</b>	<b>156</b>	<b>4,881</b>	<b>2,228</b>	<b>0.2</b>	<b>15.3</b>
<b>North Africa</b>	<b>603</b>	<b>885</b>	<b>26</b>	<b>20</b>	<b>931</b>	<b>447</b>	<b>0.0</b>	<b>54.4</b>
Morocco	390	289	12	6	307	122	0.0	-21.3
Sudan	71	50	6	7	63	18	0.0	-11.3
Tunisia	142	546	8	7	561	307	0.0	295.1
<b>Subsaharan Africa</b>	<b>3,326</b>	<b>3,195</b>	<b>521</b>	<b>118</b>	<b>3,834</b>	<b>1,735</b>	<b>0.2</b>	<b>15.3</b>
Cameroon	81	90	15	16	121	29	0.0	49.4
Congo	34	72	7	6	85	24	0.0	150.0
Ghana	50	114	17	12	143	20	0.0	186.0
Kenya	148	121	14	22	157	78	0.0	6.1
Liberia	29	122	6	7	135	26	0.0	365.5
Nigeria	212	62	142	20	224	26	0.0	5.7
South Africa	2,647	2,315	291	14	2,620	1,371	0.1	-1.0
Tanzania	40	102	8	6	116	21	0.0	190.0
Uganda	33	139	11	10	160	84	0.0	384.8
Zimbabwe	52	58	10	5	73	56	0.0	40.4
Other Africa	303	79	19	18	116	46	0.0	-61.7
<b>Middle East</b>	<b>1,697</b>	<b>1,872</b>	<b>154</b>	<b>138</b>	<b>2,164</b>	<b>505</b>	<b>0.1</b>	<b>27.5</b>
Egypt	300	337	24	11	372	96	0.0	24.0
Iraq	117	84	12	34	130	16	0.0	11.1
Jordan	180	189	28	11	228	45	0.0	26.7
Kuwait	183	140	15	20	175	43	0.0	-4.4
Oman	72	114	6	6	126	29	0.0	75.0
Palestine	42	23	6	4	33	3	0.0	-21.4
Qatar	44	26	8	5	39	3	0.0	-11.4
Saudi Arabia	102	123	9	10	142	21	0.0	39.2
Syria	157	190	10	8	208	44	0.0	32.5
United Arab Emirates	82	345	18	7	370	141	0.0	351.2
Yemen	164	245	8	11	264	33	0.0	61.0
Other Middle East	254	56	10	11	77	31	0.0	-69.7

**I. INBOUND TOURISM**

1. International tourist arrivals in April 2019

	Inbound tourism			Share (%) 2019*	Change (%)	
	2017	2018	2019		18/17	2019*/18
<b>Air</b>	<b>243,791</b>	<b>297,551</b>	<b>376,936</b>	<b>70.1</b>	<b>22.1</b>	<b>26.7</b>
Phnom Penh Int'l Airport (PNH)	109,072	147,765	177,077	32.9	35.5	19.8
Siem Reap Int'l Airport (REP)	130,003	137,357	146,195	27.2	5.7	6.4
Kong Keng (KOS)	4,716	12,429	53,664	10.0	163.5	331.8
<b>Land and Waterways</b>	<b>169,134</b>	<b>165,872</b>	<b>160,720</b>	<b>29.9</b>	<b>-1.9</b>	<b>-3.1</b>
Land	160,517	155,817	147,252	27.4	-2.9	-5.5
Waterways	8,617	10,055	13,468	2.5	16.7	33.9
<b>Total</b>	<b>412,925</b>	<b>463,423</b>	<b>537,656</b>	<b>100.0</b>	<b>12.2</b>	<b>16.0</b>

2. Top ten markets arrivals in April 2019



**II. OUTBOUND TOURISM**

Outbound tourism in April 2019

	Outbound tourism			Change (%)	
	2017	2018	2019	18/17	2019*/18
Cambodian Outbound Tourists	176,871	212,661	203,488	20.2	-4.3
International Tourists Departure	397,797	454,736	471,400	14.3	3.7

**III. INTERNAL TOURISM**

Foreign visitor arrivals to the regions in April 2019

	Arrivals			Share (%) 2019*	Change (%)	
	2017	2018	2019		18/17	2019*/18
Phnom Penh & Surrounding	231,705	271,011	352,251	53.5	17.0	30.0
Siem Reap Angkor	181,220	192,412	185,405	28.2	6.2	-3.6
Coastal Areas	66,334	82,981	114,159	17.3	25.1	37.6
Eco-tourism Areas	6,386	5,826	6,378	1.0	-8.8	9.5
<b>Total</b>	<b>485,645</b>	<b>552,230</b>	<b>658,193</b>	<b>100.0</b>	<b>13.7</b>	<b>19.2</b>

## International Tourist Arrivals to Cambodia by Country of Residence in April 2019

(by all means of transportation)

Regions Country of Residence	2018	2019			Total	Female	Share	Change
		Purposes of Visit					2019*	2019*/18
		Holiday	Business	Others			(%)	(%)
<b>Grand Total</b>	<b>463,423</b>	<b>399,764</b>	<b>123,921</b>	<b>13,971</b>	<b>537,656</b>	<b>217,975</b>	<b>100.0</b>	<b>16.0</b>
<b>Asia and the Pacific</b>	<b>373,032</b>	<b>327,916</b>	<b>119,565</b>	<b>5,773</b>	<b>453,254</b>	<b>179,841</b>	<b>84.3</b>	<b>21.5</b>
<b>ASEAN (Southeast Asia)</b>	<b>165,662</b>	<b>169,016</b>	<b>14,423</b>	<b>1,378</b>	<b>184,817</b>	<b>83,943</b>	<b>34.4</b>	<b>11.6</b>
Brunei Darussalam	63	52	2	5	59	27	0.0	-6.3
Indonesia	4,350	3,446	2,341	45	5,832	1,930	1.1	34.1
Lao PDR	31,031	33,123	165	166	33,454	16,109	6.2	7.8
Malaysia	13,563	14,609	1,929	112	16,650	5,134	3.1	22.8
Myanmar	2,054	2,520	564	33	3,117	1,373	0.6	51.8
Philippines	7,212	9,375	1,440	53	10,868	6,687	2.0	50.7
Singapore	4,874	6,276	496	57	6,829	2,285	1.3	40.1
Thailand	26,795	26,100	2,615	428	29,143	11,281	5.4	8.8
Vietnam	75,720	73,515	4,871	479	78,865	39,117	14.7	4.2
<b>Northeast Asia</b>	<b>187,639</b>	<b>143,286</b>	<b>103,553</b>	<b>2,397</b>	<b>249,236</b>	<b>88,410</b>	<b>46.4</b>	<b>32.8</b>
China	141,412	106,832	96,084	687	203,603	71,937	37.9	44.0
Hong Kong (China)	644	277	12	2	291	131	0.1	-54.8
Japan	14,132	14,369	2,372	369	17,110	6,420	3.2	21.1
Korea (ROK)	18,858	12,364	2,135	826	15,325	5,539	2.9	-18.7
Macau (China)	22	18	17	1	36	11	0.0	63.6
Mongolia	28	81	5	1	87	46	0.0	210.7
Taiwan (China)	12,543	9,345	2,928	511	12,784	4,326	2.4	1.9
<b>Southern Asia</b>	<b>5,998</b>	<b>5,885</b>	<b>864</b>	<b>96</b>	<b>6,845</b>	<b>1,763</b>	<b>1.3</b>	<b>14.1</b>
Afghanistan	21	6	1	1	8	1	0.0	-61.9
Bangladesh	350	390	76	32	498	52	0.1	42.3
Bhutan	5	11	2	3	16	6	0.0	220.0
India	4,674	4,607	535	41	5,183	1,438	1.0	10.9
Iran	65	112	10	2	124	50	0.0	90.8
Nepal	197	161	53	9	223	61	0.0	13.2
Pakistan	246	317	57	4	378	55	0.1	53.7
Sri Lanka	440	281	130	4	415	100	0.1	-5.7
<b>Oceania</b>	<b>12,601</b>	<b>9,691</b>	<b>712</b>	<b>1,891</b>	<b>12,294</b>	<b>5,705</b>	<b>2.3</b>	<b>-2.4</b>
Australia	10,320	8,142	619	1,498	10,259	4,754	1.9	-0.6
Fiji	25	14	6	2	22	6	0.0	-12.0
New Zealand	2,256	1,535	87	391	2,013	945	0.4	-10.8
Other Asia & the Pacific	1,132	38	13	11	62	20	0.0	-94.5
<b>Europe</b>	<b>61,082</b>	<b>50,975</b>	<b>2,721</b>	<b>2,773</b>	<b>56,469</b>	<b>25,109</b>	<b>10.5</b>	<b>-7.6</b>
<b>Northern Europe</b>	<b>16,785</b>	<b>15,727</b>	<b>826</b>	<b>233</b>	<b>16,786</b>	<b>7,301</b>	<b>3.1</b>	<b>0.0</b>
Denmark	1,038	913	25	20	958	486	0.2	-7.7
Finland	496	351	23	10	384	173	0.1	-22.6
Iceland	44	42	2	1	45	24	0.0	2.3
Ireland	910	845	55	3	903	409	0.2	-0.8
Norway	666	523	30	12	565	263	0.1	-15.2
Sweden	1,049	810	50	37	897	360	0.2	-14.5
United Kingdom	12,582	12,243	641	150	13,034	5,586	2.4	3.6
<b>Western Europe</b>	<b>25,970</b>	<b>21,627</b>	<b>1,292</b>	<b>2,381</b>	<b>25,300</b>	<b>11,125</b>	<b>4.7</b>	<b>-2.6</b>
Austria	667	547	30	25	602	274	0.1	-9.7
Belgium	1,442	1,508	66	69	1,643	776	0.3	13.9
France	12,844	9,424	794	1,970	12,188	5,334	2.3	-5.1
Germany	7,266	7,019	190	159	7,368	3,148	1.4	1.4
Luxembourg	111	66	6	3	75	32	0.0	-32.4
Monaco	9	4	2	1	7	3	0.0	-22.2
Netherlands	2,113	1,805	117	40	1,962	874	0.4	-7.1
Switzerland	1,518	1,254	87	114	1,455	684	0.3	-4.2
<b>Central / Eastern Europe</b>	<b>9,485</b>	<b>6,720</b>	<b>300</b>	<b>77</b>	<b>7,097</b>	<b>3,483</b>	<b>1.3</b>	<b>-25.2</b>
Bulgaria	189	207	13	2	222	121	0.0	17.5
Czech Republic	495	440	9	6	455	197	0.1	-8.1
Estonia	181	54	3	4	61	26	0.0	-66.3
Hungary	304	225	12	8	245	116	0.0	-19.4
Kazakhstan	124	100	36	5	141	82	0.0	13.7
Kyrgyzstan	17	5	4	1	10	3	0.0	-41.2
Latvia	110	56	9	2	67	36	0.0	-39.1
Lithuania	134	96	9	1	106	49	0.0	-20.9
Poland	1,363	970	31	9	1,010	453	0.2	-25.9
Romania	219	205	18	14	237	113	0.0	8.2
Russian Federation	5,573	3,761	110	15	3,886	1,940	0.7	-30.3
Slovakia	280	237	5	6	248	122	0.0	-11.4
Ukraine	471	337	34	2	373	208	0.1	-20.8
Uzbekistan	25	27	7	2	36	17	0.0	44.0

## International Tourist Arrivals to Cambodia by Country of Residence in April 2019

(by all means of transportation)

Regions Country of Residence	2018	2019			Total	Female	Share	Change
		Purposes of Visit					2019*	2019*/18
		Holiday	Business	Others			(%)	(%)
<b>Grand Total</b>	<b>463,423</b>	<b>399,764</b>	<b>123,921</b>	<b>13,971</b>	<b>537,656</b>	<b>217,975</b>	<b>100.0</b>	<b>16.0</b>
<b>Southern Europe</b>	<b>6,200</b>	<b>5,589</b>	<b>233</b>	<b>55</b>	<b>5,877</b>	<b>2,611</b>	<b>1.1</b>	<b>-5.2</b>
Croatia	165	75	7	2	84	40	0.0	-49.1
Greece	196	131	7	3	141	70	0.0	-28.1
Italy	2,466	1,898	111	26	2,035	877	0.4	-17.5
Malta	21	44	2	1	47	20	0.0	123.8
Portugal	515	820	22	1	843	409	0.2	63.7
Serbia	61	65	5	1	71	32	0.0	16.4
Slovenia	113	102	10	2	114	42	0.0	0.9
Spain	2,663	2,454	69	19	2,542	1,121	0.5	-4.5
<b>East Mediterranean Europe</b>	<b>1,875</b>	<b>1,288</b>	<b>58</b>	<b>19</b>	<b>1,365</b>	<b>571</b>	<b>0.3</b>	<b>-27.2</b>
Israel	1,216	1,011	19	8	1,038	460	0.2	-14.6
Turkey	659	277	39	11	327	111	0.1	-50.4
Other Europe	767	24	12	8	44	18	0.0	-94.3
<b>Americas</b>	<b>28,018</b>	<b>19,745</b>	<b>1,447</b>	<b>5,371</b>	<b>26,563</b>	<b>12,444</b>	<b>4.9</b>	<b>-5.2</b>
<b>North America</b>	<b>24,019</b>	<b>17,415</b>	<b>1,378</b>	<b>5,325</b>	<b>24,118</b>	<b>11,141</b>	<b>4.5</b>	<b>0.4</b>
Canada	4,736	3,563	342	721	4,626	2,107	0.9	-2.3
Mexico	663	981	11	2	994	573	0.2	49.9
United States of America	18,620	12,871	1,025	4,602	18,498	8,461	3.4	-0.7
<b>Central America</b>	<b>111</b>	<b>136</b>	<b>15</b>	<b>6</b>	<b>157</b>	<b>84</b>	<b>0.0</b>	<b>41.4</b>
Costa Rica	88	107	7	3	117	54	0.0	33.0
Honduras	17	21	6	2	29	22	0.0	70.6
Jamaica	6	8	2	1	11	8	0.0	83.3
<b>South America</b>	<b>3,667</b>	<b>2,182</b>	<b>45</b>	<b>35</b>	<b>2,262</b>	<b>1,209</b>	<b>0.4</b>	<b>-38.3</b>
Argentina	1,075	473	6	5	484	240	0.1	-55.0
Brazil	1,074	727	19	13	759	394	0.1	-29.3
Chile	442	330	4	4	338	173	0.1	-23.5
Colombia	365	363	9	3	375	206	0.1	2.7
Ecuador	44	38	3	2	43	24	0.0	-2.3
Peru	174	98	2	3	103	73	0.0	-40.8
Uruguay	476	130	1	2	133	84	0.0	-72.1
Venezuela	17	23	1	3	27	15	0.0	58.8
Other America	221	12	9	5	26	10	0.0	-88.2
<b>Africa</b>	<b>923</b>	<b>799</b>	<b>150</b>	<b>35</b>	<b>984</b>	<b>477</b>	<b>0.2</b>	<b>6.6</b>
<b>North Africa</b>	<b>142</b>	<b>70</b>	<b>7</b>	<b>5</b>	<b>82</b>	<b>35</b>	<b>0.0</b>	<b>-42.3</b>
Morocco	78	36	3	1	40	18	0.0	-48.7
Sudan	15	6	1	2	9	2	0.0	-40.0
Tunisia	49	28	3	2	33	15	0.0	-32.7
<b>Subsaharan Africa</b>	<b>742</b>	<b>721</b>	<b>138</b>	<b>27</b>	<b>886</b>	<b>435</b>	<b>0.2</b>	<b>19.4</b>
Cameroon	21	30	2	3	35	12	0.0	66.7
Congo	12	14	2	1	17	5	0.0	41.7
Ghana	11	26	4	2	32	2	0.0	190.9
Kenya	37	29	3	7	39	15	0.0	5.4
Liberia	8	29	1	2	32	10	0.0	300.0
Nigeria	48	11	30	4	45	12	0.0	-6.3
South Africa	578	493	89	2	584	319	0.1	1.0
Tanzania	7	14	2	1	17	8	0.0	142.9
Uganda	6	65	3	4	72	43	0.0	1100.0
Zimbabwe	14	10	2	1	13	9	0.0	-7.1
Other Africa	39	8	5	3	16	7	0.0	-59.0
<b>Middle East</b>	<b>368</b>	<b>329</b>	<b>38</b>	<b>19</b>	<b>386</b>	<b>104</b>	<b>0.1</b>	<b>4.9</b>
Egypt	63	109	6	2	117	47	0.0	85.7
Iraq	28	17	3	1	21	2	0.0	-25.0
Jordan	43	39	10	2	51	13	0.0	18.6
Kuwait	45	26	3	3	32	11	0.0	-28.9
Oman	13	28	2	1	31	14	0.0	138.5
Palestine	7	8	1	1	10	2	0.0	42.9
Qatar	15	3	2	1	6	1	0.0	-60.0
Saudi Arabia	29	22	3	2	27	1	0.0	-6.9
Syria	39	28	2	1	31	2	0.0	-20.5
United Arab Emirates	17	15	1	2	18	4	0.0	5.9
Yemen	45	27	2	1	30	4	0.0	-33.3
Other Middle East	24	7	3	2	12	3	0.0	-50.0