



KINGDOM OF CAMBODIA  
NATION RELIGION KING



# TOURISM STATISTICS REPORT

# August 2019

**MINISTRY OF TOURISM**  
NATIONAL INSTITUTE OF TOURISM  
TOURISM STATISTICS DEPARTMENT  
No. A3, Street 169, Sangkat Veal Vong, Khan 7 Makara, Phnom Penh, Cambodia.  
Fax: +855 23 885003  
E-mail: [kong@tourism.gov.kh](mailto:kong@tourism.gov.kh)  
Website: [www.tourism.gov.kh](http://www.tourism.gov.kh)

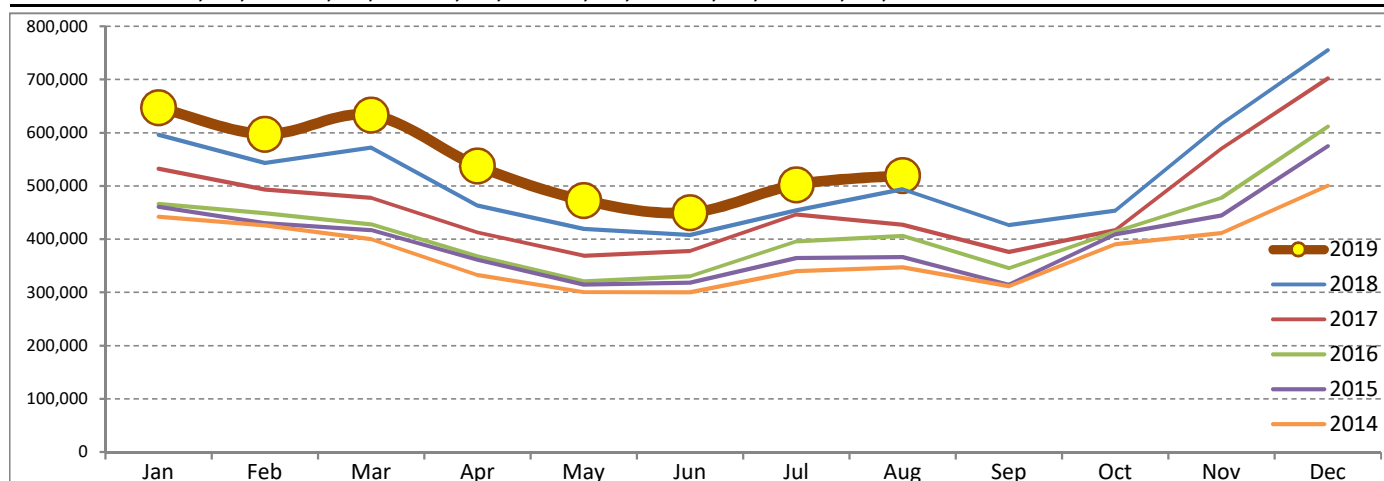
# Tourism Highlights

## Int'l Tourist Arrivals, Average Length of Stays, Hotel Occupancy & Int'l Tourism Receipts 1993 - 2018

Years	Int'l Tourist Arrivals		Average Length	Hotel Occupancy	Int'l Tourism Receipts
	Number	Change (%)	of Stays (Days)	(%)	(Million US\$)
1993	118,183	-	N/A	N/A	N/A
1994	176,617	49.4	N/A	N/A	N/A
1995	219,680	24.4	8.00	37.0	100
1996	260,489	18.6	7.50	40.0	118
1997	218,843	-16.0	6.40	30.0	103
1998	286,524	30.9	5.20	40.0	166
1999	367,743	28.3	5.50	44.0	190
2000	466,365	26.8	5.50	45.0	228
2001	604,919	29.7	5.50	48.0	304
2002	786,524	30.0	5.80	50.0	379
2003	701,014	-10.9	5.50	50.0	347
2004	1,055,202	50.5	6.30	52.0	578
2005	1,421,615	34.7	6.30	52.0	832
2006	1,700,041	19.6	6.50	54.8	1,049
2007	2,015,128	18.5	6.50	54.8	1,400
2008	2,125,465	5.5	6.65	62.7	1,595
2009	2,161,577	1.7	6.45	63.6	1,561
2010	2,508,289	16.0	6.45	65.7	1,786
2011	2,881,862	14.9	6.50	66.2	1,912
2012	3,584,307	24.4	6.30	68.5	2,210
2013	4,210,165	17.5	6.75	69.5	2,547
2014	4,502,775	7.0	6.50	67.6	2,736
2015	4,775,231	6.1	6.80	70.2	3,012
2016	5,011,712	5.0	6.30	68.9	3,212
2017	5,602,157	11.8	6.60	71.3	3,638
2018	6,201,077	10.7	7.00	72.2	4,375

### International Tourist Arrivals to Cambodia

Months	2014	2015	2016	2017	2018	2019	Change (%)				
							15/14	16/15	17/16	18/17	2019*/18
<b>Q1</b>	<b>1,267,922</b>	<b>1,307,836</b>	<b>1,342,477</b>	<b>1,502,896</b>	<b>1,711,253</b>	<b>1,877,853</b>	<b>3.1</b>	<b>2.6</b>	<b>11.9</b>	<b>13.9</b>	<b>9.7</b>
Jan	442,045	460,577	466,086	532,206	596,241	647,206	4.2	1.2	14.2	12.0	8.5
Feb	425,801	430,207	448,468	493,316	542,937	597,483	1.0	4.2	10.0	10.1	10.0
Mar	400,076	417,052	427,923	477,374	572,075	633,164	4.2	2.6	11.6	19.8	10.7
<b>Q2</b>	<b>933,446</b>	<b>994,154</b>	<b>1,018,455</b>	<b>1,159,783</b>	<b>1,290,407</b>	<b>1,460,621</b>	<b>6.5</b>	<b>2.4</b>	<b>13.9</b>	<b>11.3</b>	<b>13.2</b>
Apr	332,690	361,139	367,684	412,925	463,423	537,656	8.6	1.8	12.3	12.2	16.0
May	300,302	314,748	320,601	368,809	419,171	472,952	4.8	1.9	15.0	13.7	12.8
Jun	300,454	318,267	330,170	378,049	407,813	450,013	5.9	3.7	14.5	7.9	10.3
<b>Q3</b>	<b>998,690</b>	<b>1,044,880</b>	<b>1,147,483</b>	<b>1,250,082</b>	<b>1,374,373</b>	<b>1,021,923</b>	<b>4.6</b>	<b>9.8</b>	<b>8.9</b>	<b>9.9</b>	
Jul	340,091	364,325	395,761	446,627	454,056	502,421	7.1	8.6	12.9	1.7	10.7
Aug	347,211	366,096	406,214	427,224	494,043	519,502	5.4	11.0	5.2	15.6	5.2
Sep	311,388	314,459	345,508	376,231	426,274		1.0	9.9	8.9	13.3	
<b>Q4</b>	<b>1,302,717</b>	<b>1,428,361</b>	<b>1,503,297</b>	<b>1,689,396</b>	<b>1,825,044</b>	<b>0</b>	<b>9.6</b>	<b>5.2</b>	<b>12.4</b>	<b>8.0</b>	
Oct	390,637	408,922	414,077	417,039	453,370		4.7	1.3	0.7	8.7	
Nov	411,501	444,640	477,686	570,471	616,549		8.1	7.4	19.4	8.1	
Dec	500,579	574,799	611,534	701,886	755,125		14.8	6.4	14.8	7.6	
<b>Total</b>	<b>4,502,775</b>	<b>4,775,231</b>	<b>5,011,712</b>	<b>5,602,157</b>	<b>6,201,077</b>	<b>4,360,397</b>	<b>6.1</b>	<b>5.0</b>	<b>11.8</b>	<b>10.7</b>	<b>10.4</b>



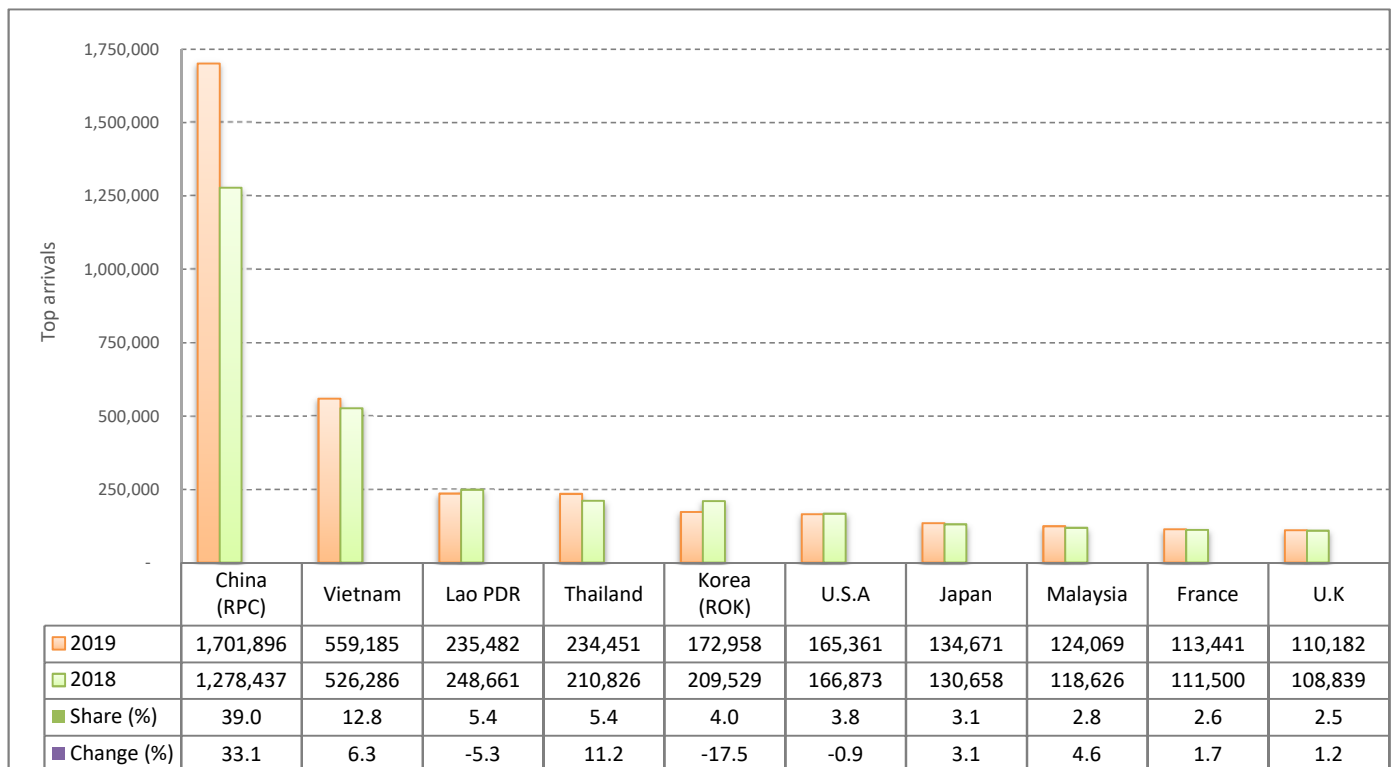
Source: Tourism Statistics Department, MOT

**I. INBOUND TOURISM**

1. International tourist arrivals in January - August 2019

	Inbound tourism			Share (%) 2019*	Change (%)	
	2017	2018	2019		18/17	2019*/18
<b>Air</b>	<b>2,150,956</b>	<b>2,661,816</b>	<b>3,104,489</b>	<b>71.2</b>	<b>23.8</b>	<b>16.6</b>
Phnom Penh Int'l Airport (PNH)	915,893	1,244,244	1,427,487	32.7	35.9	14.7
Siem Reap Int'l Airport (REP)	1,183,070	1,307,358	1,188,254	27.3	10.5	-9.1
Kong Keng (KOS)	51,993	110,214	488,748	11.2	112.0	343.5
<b>Land and Waterways</b>	<b>1,385,574</b>	<b>1,287,943</b>	<b>1,255,908</b>	<b>28.8</b>	<b>-7.0</b>	<b>-2.5</b>
Land	1,282,760	1,195,453	1,160,746	26.6	-6.8	-2.9
Waterways	102,814	92,490	95,162	2.2	-10.0	2.9
<b>Total</b>	<b>3,536,530</b>	<b>3,949,759</b>	<b>4,360,397</b>	<b>100.0</b>	<b>11.7</b>	<b>10.4</b>

2. Top ten markets arrivals in January - August 2019



**II. OUTBOUND TOURISM**

Outbound tourism in January - August 2019

	Outbound tourism			Change (%)	
	2017	2018	2019	18/17	2019*/18
Cambodian Outbound Tourists	1,153,100	1,286,396	1,347,060	11.6	4.7
International Tourists Departure	3,393,720	3,813,203	4,139,859	12.4	8.6

**III. INTERNAL TOURISM**

Foreign visitor arrivals to the regions in January - August 2019

	Arrivals			Share (%) 2019*	Change (%)	
	2017	2018	2019		18/17	2019*/18
Phnom Penh & Surrounding	1,928,099	2,205,045	2,808,561	53.8	14.4	27.4
Siem Reap Angkor	1,608,431	1,744,704	1,551,836	29.7	8.5	-11.1
Coastal Areas	492,185	589,266	804,537	15.4	19.7	36.5
Eco-tourism Areas	48,543	51,978	56,723	1.1	7.1	9.1
<b>Total</b>	<b>4,077,258</b>	<b>4,590,993</b>	<b>5,221,657</b>	<b>100.0</b>	<b>12.6</b>	<b>13.7</b>

## International Tourist Arrivals to Cambodia by Country of Residence in January - August 2019

(by all means of transportation)

Regions Country of Residence	2018	2019			Total	Female	Share	Change
		Purposes of Visit					2019*	2019*/18
		Holiday	Business	Others			(%)	(%)
<b>Grand Total</b>	<b>3,949,759</b>	<b>3,249,274</b>	<b>982,269</b>	<b>128,854</b>	<b>4,360,397</b>	<b>1,803,807</b>	<b>100.0</b>	<b>10.4</b>
<b>Asia and the Pacific</b>	<b>3,130,328</b>	<b>2,575,669</b>	<b>948,034</b>	<b>59,001</b>	<b>3,582,704</b>	<b>1,444,117</b>	<b>82.2</b>	<b>14.5</b>
<b>ASEAN (Southeast Asia)</b>	<b>1,256,265</b>	<b>1,188,173</b>	<b>112,387</b>	<b>25,378</b>	<b>1,325,938</b>	<b>588,344</b>	<b>30.4</b>	<b>5.5</b>
Brunei Darussalam	522	733	15	27	775	368	0.0	48.5
Indonesia	33,920	22,789	17,793	1,197	41,779	12,131	1.0	23.2
Lao PDR	248,661	228,379	714	6,389	235,482	97,058	5.4	-5.3
Malaysia	118,626	107,076	15,093	1,900	124,069	37,864	2.8	4.6
Myanmar	13,304	10,235	4,381	542	15,158	6,333	0.3	13.9
Philippines	55,731	53,626	9,980	994	64,600	38,971	1.5	15.9
Singapore	48,389	45,759	3,784	896	50,439	15,640	1.2	4.2
Thailand	210,826	199,408	27,772	7,271	234,451	88,766	5.4	11.2
Vietnam	526,286	520,168	32,855	6,162	559,185	291,213	12.8	6.3
<b>Northeast Asia</b>	<b>1,716,870</b>	<b>1,263,386</b>	<b>822,877</b>	<b>18,326</b>	<b>2,104,589</b>	<b>800,123</b>	<b>48.3</b>	<b>22.6</b>
China	1,278,437	928,195	766,978	6,723	1,701,896	636,438	39.0	33.1
Hong Kong (China)	7,681	1,312	109	76	1,497	318	0.0	-80.5
Japan	130,658	111,897	19,661	3,113	134,671	53,363	3.1	3.1
Korea (ROK)	209,529	152,545	15,270	5,143	172,958	72,915	4.0	-17.5
Macau (China)	403	104	33	24	161	30	0.0	-60.0
Mongolia	538	742	48	39	829	392	0.0	54.1
Taiwan (China)	89,624	68,591	20,778	3,208	92,577	36,667	2.1	3.3
<b>Southern Asia</b>	<b>48,489</b>	<b>50,218</b>	<b>7,143</b>	<b>905</b>	<b>58,266</b>	<b>14,853</b>	<b>1.3</b>	<b>20.2</b>
Afghanistan	190	221	25	22	268	89	0.0	41.1
Bangladesh	1,896	3,393	736	148	4,277	562	0.1	125.6
Bhutan	131	135	13	28	176	63	0.0	34.4
India	39,231	38,991	4,788	330	44,109	12,106	1.0	12.4
Iran	801	736	43	32	811	276	0.0	1.2
Nepal	1,830	2,148	357	141	2,646	730	0.1	44.6
Pakistan	2,129	2,499	447	77	3,023	406	0.1	42.0
Srilanka	2,281	2,095	734	127	2,956	621	0.1	29.6
<b>Oceania</b>	<b>100,248</b>	<b>72,763</b>	<b>5,261</b>	<b>13,956</b>	<b>91,980</b>	<b>40,069</b>	<b>2.1</b>	<b>-8.2</b>
Australia	83,668	61,137	4,439	11,012	76,588	33,438	1.8	-8.5
Fiji	162	310	47	41	398	149	0.0	145.7
New Zealand	16,418	11,316	775	2,903	14,994	6,482	0.3	-8.7
Other Asia & the Pacific	8,456	1,129	366	436	1,931	728	0.0	-77.2
<b>Europe</b>	<b>556,914</b>	<b>479,884</b>	<b>21,479</b>	<b>27,403</b>	<b>528,766</b>	<b>242,082</b>	<b>12.1</b>	<b>-5.1</b>
<b>Northern Europe</b>	<b>150,911</b>	<b>137,352</b>	<b>6,789</b>	<b>2,137</b>	<b>146,278</b>	<b>63,940</b>	<b>3.4</b>	<b>-3.1</b>
Denmark	9,553	8,173	297	153	8,623	4,018	0.2	-9.7
Finland	5,206	3,538	194	97	3,829	1,660	0.1	-26.5
Iceland	576	521	32	29	582	256	0.0	1.0
Ireland	8,704	7,813	385	106	8,304	3,762	0.2	-4.6
Norway	7,119	5,215	178	180	5,573	2,561	0.1	-21.7
Sweden	10,914	8,356	472	357	9,185	3,772	0.2	-15.8
United Kingdom	108,839	103,736	5,231	1,215	110,182	47,911	2.5	1.2
<b>Western Europe</b>	<b>231,249</b>	<b>192,811</b>	<b>9,647</b>	<b>23,197</b>	<b>225,655</b>	<b>99,873</b>	<b>5.2</b>	<b>-2.4</b>
Austria	7,759	6,738	241	348	7,327	3,336	0.2	-5.6
Belgium	12,609	12,048	560	664	13,272	6,168	0.3	5.3
France	111,500	88,801	5,539	19,101	113,441	50,664	2.6	1.7
Germany	65,262	55,510	1,735	1,499	58,744	25,132	1.3	-10.0
Luxembourg	514	603	37	25	665	294	0.0	29.4
Monaco	60	33	10	12	55	16	0.0	-8.3
Netherlands	19,836	18,336	904	542	19,782	8,923	0.5	-0.3
Switzerland	13,709	10,742	621	1,006	12,369	5,340	0.3	-9.8
<b>Central / Eastern Europe</b>	<b>89,387</b>	<b>70,240</b>	<b>2,458</b>	<b>1,071</b>	<b>73,769</b>	<b>38,695</b>	<b>1.7</b>	<b>-17.5</b>
Bulgaria	2,119	1,810	60	53	1,923	828	0.0	-9.2
Czech Republic	5,174	4,485	93	70	4,648	2,079	0.1	-10.2
Estonia	2,619	738	39	25	802	350	0.0	-69.4
Hungary	3,700	3,888	91	48	4,027	1,968	0.1	8.8
Kazakhstan	1,443	1,200	256	44	1,500	743	0.0	4.0
Kyrgyzstan	216	172	45	19	236	127	0.0	9.3
Latvia	1,053	676	43	20	739	387	0.0	-29.8
Lithuania	1,579	1,403	45	21	1,469	793	0.0	-7.0
Poland	13,369	11,639	181	85	11,905	5,961	0.3	-11.0
Romania	2,441	1,968	101	87	2,156	1,100	0.0	-11.7
Russian Federation	47,852	35,285	1,026	449	36,760	20,279	0.8	-23.2
Slovakia	2,586	1,916	71	48	2,035	964	0.0	-21.3
Ukraine	4,813	4,780	326	57	5,163	2,937	0.1	7.3
Uzbekistan	423	280	81	45	406	179	0.0	-4.0

## International Tourist Arrivals to Cambodia by Country of Residence in January - August 2019

(by all means of transportation)

Regions Country of Residence	2018	2019			Total	Female	Share	Change
		Purposes of Visit					2019*	2019*/18
		Holiday	Business	Others			(%)	(%)
<b>Grand Total</b>	<b>3,949,759</b>	<b>3,249,274</b>	<b>982,269</b>	<b>128,854</b>	<b>4,360,397</b>	<b>1,803,807</b>	<b>100.0</b>	<b>10.4</b>
<b>Southern Europe</b>	<b>65,097</b>	<b>64,986</b>	<b>1,910</b>	<b>656</b>	<b>67,552</b>	<b>32,682</b>	<b>1.5</b>	<b>3.8</b>
Croatia	1,577	906	48	32	986	454	0.0	-37.5
Greece	1,407	1,213	54	46	1,313	584	0.0	-6.7
Italy	25,772	26,713	933	262	27,908	12,967	0.6	8.3
Malta	304	291	14	15	320	142	0.0	5.3
Portugal	4,574	5,198	141	48	5,387	2,728	0.1	17.8
Serbia	885	755	35	38	828	427	0.0	-6.4
Slovenia	1,051	978	79	38	1,095	409	0.0	4.2
Spain	29,527	28,932	606	177	29,715	14,971	0.7	0.6
<b>East Mediterranean Europe</b>	<b>15,175</b>	<b>14,011</b>	<b>525</b>	<b>211</b>	<b>14,747</b>	<b>6,590</b>	<b>0.3</b>	<b>-2.8</b>
Israel	9,482	10,083	264	69	10,416	4,757	0.2	9.9
Turkey	5,693	3,928	261	142	4,331	1,833	0.1	-23.9
Other Europe	5,095	484	150	131	765	302	0.0	-85.0
<b>Americas</b>	<b>250,054</b>	<b>183,477</b>	<b>11,292</b>	<b>41,857</b>	<b>236,626</b>	<b>113,062</b>	<b>5.4</b>	<b>-5.4</b>
<b>North America</b>	<b>214,393</b>	<b>160,201</b>	<b>10,394</b>	<b>41,410</b>	<b>212,005</b>	<b>99,909</b>	<b>4.9</b>	<b>-1.1</b>
Canada	41,912	33,175	2,240	5,034	40,449	18,630	0.9	-3.5
Mexico	5,608	5,975	122	98	6,195	3,160	0.1	10.5
United States of America	166,873	121,051	8,032	36,278	165,361	78,119	3.8	-0.9
<b>Central America</b>	<b>1,490</b>	<b>729</b>	<b>62</b>	<b>46</b>	<b>837</b>	<b>407</b>	<b>0.0</b>	<b>-43.8</b>
Costa Rica	1,136	501	19	20	540	253	0.0	-52.5
Honduras	136	95	28	11	134	76	0.0	-1.5
Jamaica	218	133	15	15	163	78	0.0	-25.2
<b>South America</b>	<b>32,032</b>	<b>22,301</b>	<b>746</b>	<b>335</b>	<b>23,382</b>	<b>12,589</b>	<b>0.5</b>	<b>-27.0</b>
Argentina	8,980	4,218	69	38	4,325	2,249	0.1	-51.8
Brazil	9,375	6,560	154	59	6,773	3,600	0.2	-27.8
Chile	4,539	5,167	306	44	5,517	2,976	0.1	21.5
Colombia	5,968	2,577	96	72	2,745	1,495	0.1	-54.0
Ecuador	518	404	27	33	464	221	0.0	-10.4
Peru	1,354	1,149	32	38	1,219	720	0.0	-10.0
Uruguay	1,071	1,889	29	27	1,945	1,127	0.0	81.6
Venezuela	227	337	33	24	394	201	0.0	73.6
Other America	2,139	246	90	66	402	157	0.0	-81.2
<b>Africa</b>	<b>9,044</b>	<b>7,134</b>	<b>1,121</b>	<b>317</b>	<b>8,572</b>	<b>3,770</b>	<b>0.2</b>	<b>-5.2</b>
<b>North Africa</b>	<b>1,000</b>	<b>1,388</b>	<b>53</b>	<b>61</b>	<b>1,502</b>	<b>689</b>	<b>0.0</b>	<b>50.2</b>
Morocco	625	638	25	17	680	285	0.0	8.8
Sudan	144	115	11	27	153	48	0.0	6.3
Tunisia	231	635	17	17	669	356	0.0	189.6
<b>Subsaharan Africa</b>	<b>7,654</b>	<b>5,639</b>	<b>1,028</b>	<b>224</b>	<b>6,891</b>	<b>3,017</b>	<b>0.2</b>	<b>-10.0</b>
Cameroon	187	169	32	25	226	62	0.0	20.9
Congo	226	132	14	12	158	45	0.0	-30.1
Ghana	351	184	34	20	238	34	0.0	-32.2
Kenya	350	252	41	37	330	176	0.0	-5.7
Liberia	1,312	248	15	12	275	49	0.0	-79.0
Nigeria	371	135	240	41	416	62	0.0	12.1
South Africa	4,581	4,045	600	35	4,680	2,329	0.1	2.2
Tanzania	80	133	14	11	158	42	0.0	97.5
Uganda	86	244	17	22	283	139	0.0	229.1
Zimbabwe	110	97	21	9	127	79	0.0	15.5
Other Africa	390	107	40	32	179	64	0.0	-54.1
<b>Middle East</b>	<b>3,419</b>	<b>3,110</b>	<b>343</b>	<b>276</b>	<b>3,729</b>	<b>776</b>	<b>0.1</b>	<b>9.1</b>
Egypt	525	593	70	28	691	158	0.0	31.6
Iraq	483	186	23	86	295	42	0.0	-38.9
Jordan	340	341	59	18	418	77	0.0	22.9
Kuwait	345	249	40	30	319	60	0.0	-7.5
Oman	151	162	15	10	187	42	0.0	23.8
Palestine	96	58	12	9	79	8	0.0	-17.7
Qatar	71	52	13	10	75	9	0.0	5.6
Saudi Arabia	207	240	18	20	278	44	0.0	34.3
Syria	315	323	20	15	358	66	0.0	13.7
United Arab Emirates	164	452	31	14	497	158	0.0	203.0
Yemen	418	379	20	17	416	69	0.0	-0.5
Other Middle East	304	75	22	19	116	43	0.0	-61.8

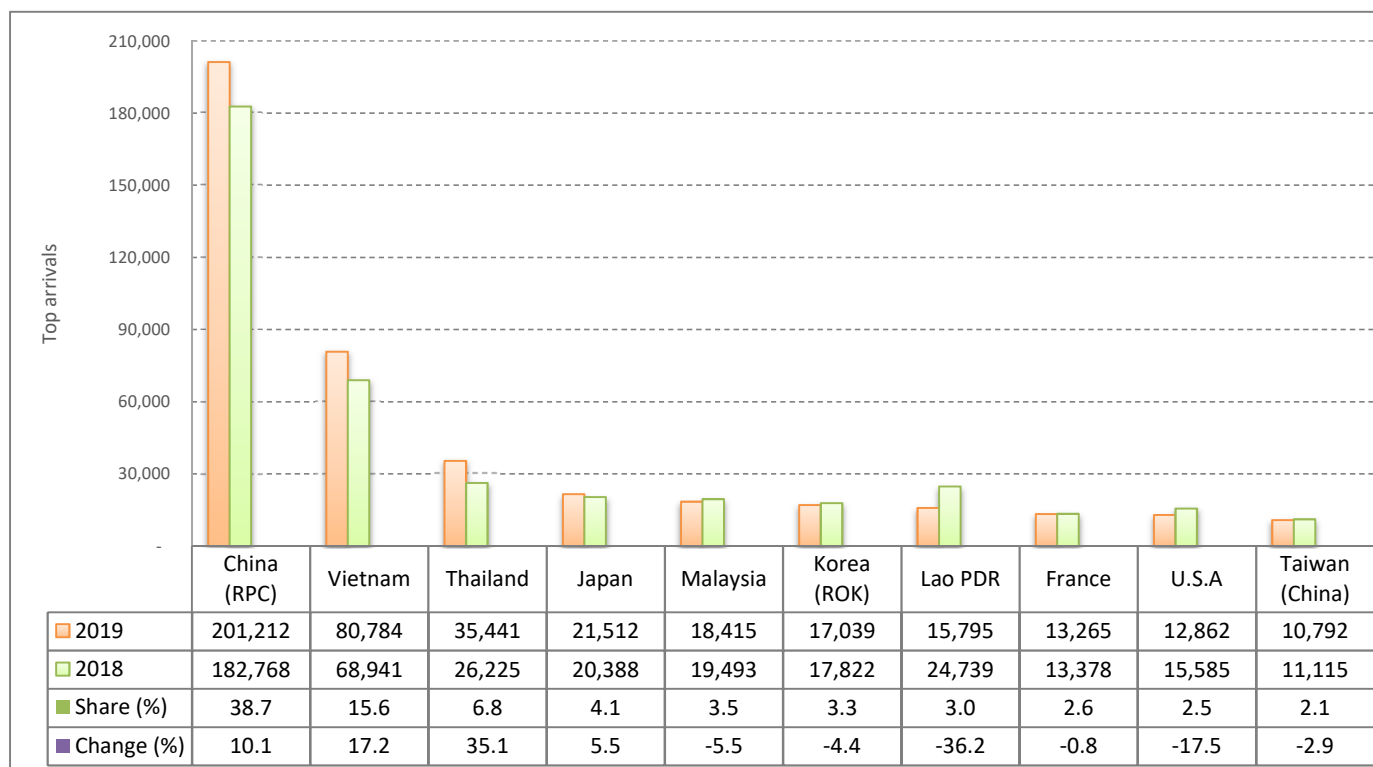
# CAMBODIA: TOURISM STATISTICS REPORT IN AUGUST 2019

## I. INBOUND TOURISM

### 1. International tourist arrivals in August 2019

	Inbound tourism			Share (%) 2019*	Change (%)	
	2017	2018	2019		18/17	2019*/18
<b>Air</b>	<b>274,917</b>	<b>349,018</b>	<b>369,447</b>	<b>71.1</b>	<b>27.0</b>	<b>5.9</b>
Phnom Penh Int'l Airport (PNH)	121,631	169,125	169,073	32.5	39.0	0.0
Siem Reap Int'l Airport (REP)	143,405	158,022	120,337	23.2	10.2	-23.8
Kong Keng (KOS)	9,881	21,871	80,037	15.4	121.3	266.0
<b>Land and Waterways</b>	<b>152,307</b>	<b>145,025</b>	<b>150,055</b>	<b>28.9</b>	<b>-4.8</b>	<b>3.5</b>
Land	145,738	138,573	145,381	28.0	-4.9	4.9
Waterways	6,569	6,452	4,674	0.9	-1.8	-27.6
<b>Total</b>	<b>427,224</b>	<b>494,043</b>	<b>519,502</b>	<b>100.0</b>	<b>15.6</b>	<b>5.2</b>

### 2. Top ten markets arrivals in August 2019



## II. OUTBOUND TOURISM

### Outbound tourism in August 2019

	Outbound tourism			Change (%)	
	2017	2018	2019	18/17	2019*/18
Cambodian Outbound Tourists	154,391	181,396	175,614	17.5	-3.2
International Tourists Departure	430,285	474,791	532,771	10.3	12.2

## III. INTERNAL TOURISM

### Foreign visitor arrivals to the regions in August 2019

	Arrivals			Share (%) 2019*	Change (%)	
	2017	2018	2019		18/17	2019*/18
Phnom Penh & Surrounding	234,821	292,178	361,378	57.1	24.4	23.7
Siem Reap Angkor	192,403	201,865	158,124	25.0	4.9	-21.7
Coastal Areas	53,798	61,386	108,000	17.1	14.1	75.9
Eco-tourism Areas	5,199	4,975	5,306	0.8	-4.3	6.7
<b>Total</b>	<b>486,221</b>	<b>560,404</b>	<b>632,808</b>	<b>100.0</b>	<b>15.3</b>	<b>12.9</b>

## International Tourist Arrivals to Cambodia by Country of Residence in August 2019

(by all means of transportation)

Regions Country of Residence	2018	2019			Total	Female	Share	Change
		Purposes of Visit					2019*	2019*/18
		Holiday	Business	Others			(%)	(%)
<b>Grand Total</b>	<b>494,043</b>	<b>361,979</b>	<b>143,157</b>	<b>14,366</b>	<b>519,502</b>	<b>221,454</b>	<b>100.0</b>	<b>5.2</b>
<b>Asia and the Pacific</b>	<b>408,019</b>	<b>294,105</b>	<b>139,231</b>	<b>5,840</b>	<b>439,176</b>	<b>183,624</b>	<b>84.5</b>	<b>7.6</b>
<b>ASEAN (Southeast Asia)</b>	<b>158,324</b>	<b>148,565</b>	<b>20,968</b>	<b>1,619</b>	<b>171,152</b>	<b>86,907</b>	<b>32.9</b>	<b>8.1</b>
Brunei Darussalam	100	73	3	5	81	27	0.0	-19.0
Indonesia	4,274	2,409	2,591	187	5,187	1,429	1.0	21.4
Lao PDR	24,739	15,479	141	175	15,795	7,744	3.0	-36.2
Malaysia	19,493	16,014	2,195	206	18,415	6,256	3.5	-5.5
Myanmar	1,359	719	663	42	1,424	633	0.3	4.8
Philippines	6,690	6,459	1,101	88	7,648	4,702	1.5	14.3
Singapore	6,503	5,715	581	81	6,377	2,011	1.2	-1.9
Thailand	26,225	24,041	10,923	477	35,441	17,358	6.8	35.1
Vietnam	68,941	77,656	2,770	358	80,784	46,747	15.6	17.2
<b>Northeast Asia</b>	<b>232,858</b>	<b>131,667</b>	<b>116,392</b>	<b>2,629</b>	<b>250,688</b>	<b>90,896</b>	<b>48.3</b>	<b>7.7</b>
China	182,768	91,352	108,758	1,102	201,212	69,810	38.7	10.1
Hong Kong (China)	644	34	15	11	60	15	0.0	-90.7
Japan	20,388	18,264	2,799	449	21,512	9,556	4.1	5.5
Korea (ROK)	17,822	14,235	2,149	655	17,039	7,072	3.3	-4.4
Macau (China)	77	5	3	4	12	2	0.0	-84.4
Mongolia	44	49	10	2	61	31	0.0	38.6
Taiwan (China)	11,115	7,728	2,658	406	10,792	4,410	2.1	-2.9
<b>Southern Asia</b>	<b>5,874</b>	<b>6,841</b>	<b>1,102</b>	<b>182</b>	<b>8,125</b>	<b>1,853</b>	<b>1.6</b>	<b>38.3</b>
Afghanistan	29	100	7	7	114	48	0.0	293.1
Bangladesh	289	564	154	35	753	124	0.1	160.6
Bhutan	13	13	3	4	20	5	0.0	53.8
India	4,525	5,134	720	53	5,907	1,396	1.1	30.5
Iran	92	64	6	3	73	23	0.0	-20.7
Nepal	273	330	49	5	384	89	0.1	40.7
Pakistan	342	323	77	9	409	55	0.1	19.6
Sri Lanka	311	313	86	66	465	113	0.1	49.5
<b>Oceania</b>	<b>10,610</b>	<b>6,980</b>	<b>733</b>	<b>1,369</b>	<b>9,082</b>	<b>3,925</b>	<b>1.7</b>	<b>-14.4</b>
Australia	8,690	5,585	597	1,084	7,266	3,142	1.4	-16.4
Fiji	16	177	4	3	184	84	0.0	1050.0
New Zealand	1,904	1,218	132	282	1,632	699	0.3	-14.3
Other Asia & the Pacific	353	52	36	41	129	43	0.0	-63.5
<b>Europe</b>	<b>62,887</b>	<b>53,019</b>	<b>2,106</b>	<b>4,584</b>	<b>59,709</b>	<b>28,612</b>	<b>11.5</b>	<b>-5.1</b>
<b>Northern Europe</b>	<b>14,622</b>	<b>11,221</b>	<b>856</b>	<b>258</b>	<b>12,335</b>	<b>5,343</b>	<b>2.4</b>	<b>-15.6</b>
Denmark	559	380	46	16	442	195	0.1	-20.9
Finland	578	91	36	3	130	46	0.0	-77.5
Iceland	17	38	7	5	50	17	0.0	194.1
Ireland	1,076	1,027	43	19	1,089	522	0.2	1.2
Norway	386	230	18	19	267	81	0.1	-30.8
Sweden	562	310	74	29	413	134	0.1	-26.5
United Kingdom	11,444	9,145	632	167	9,944	4,348	1.9	-13.1
<b>Western Europe</b>	<b>25,043</b>	<b>18,742</b>	<b>607</b>	<b>4,067</b>	<b>23,416</b>	<b>11,098</b>	<b>4.5</b>	<b>-6.5</b>
Austria	712	584	52	66	702	307	0.1	-1.4
Belgium	1,462	1,224	73	77	1,374	629	0.3	-6.0
France	13,378	9,735	81	3,449	13,265	6,609	2.6	-0.8
Germany	5,770	3,880	222	341	4,443	1,916	0.9	-23.0
Luxembourg	80	254	4	2	260	132	0.1	225.0
Monaco	4	6	1	1	8	4	0.0	100.0
Netherlands	2,523	2,403	91	43	2,537	1,184	0.5	0.6
Switzerland	1,114	656	83	88	827	317	0.2	-25.8
<b>Central / Eastern Europe</b>	<b>6,150</b>	<b>3,765</b>	<b>351</b>	<b>119</b>	<b>4,235</b>	<b>2,317</b>	<b>0.8</b>	<b>-31.1</b>
Bulgaria	152	97	4	2	103	48	0.0	-32.2
Czech Republic	350	205	11	4	220	93	0.0	-37.1
Estonia	126	21	2	1	24	11	0.0	-81.0
Hungary	136	111	8	5	124	63	0.0	-8.8
Kazakhstan	166	69	46	3	118	76	0.0	-28.9
Kyrgyzstan	17	6	12	1	19	8	0.0	11.8
Latvia	92	16	2	2	20	11	0.0	-78.3
Lithuania	64	54	8	3	65	35	0.0	1.6
Poland	1,283	645	28	23	696	355	0.1	-45.8
Romania	223	90	8	13	111	67	0.0	-50.2
Russian Federation	2,909	1,958	138	50	2,146	1,249	0.4	-26.2
Slovakia	179	101	9	5	115	55	0.0	-35.8
Ukraine	395	356	53	4	413	214	0.1	4.6
Uzbekistan	58	36	22	3	61	32	0.0	5.2

## International Tourist Arrivals to Cambodia by Country of Residence in August 2019

(by all means of transportation)

Regions Country of Residence	2018	2019			Total	Female	Share	Change
		Purposes of Visit					2019*	2019*/18
		Holiday	Business	Others			(%)	(%)
<b>Grand Total</b>	<b>494,043</b>	<b>361,979</b>	<b>143,157</b>	<b>14,366</b>	<b>519,502</b>	<b>221,454</b>	<b>100.0</b>	<b>5.2</b>
<b>Southern Europe</b>	<b>15,438</b>	<b>18,151</b>	<b>224</b>	<b>92</b>	<b>18,467</b>	<b>9,314</b>	<b>3.6</b>	<b>19.6</b>
Croatia	192	45	3	2	50	21	0.0	-74.0
Greece	214	223	2	7	232	113	0.0	8.4
Italy	5,522	6,272	108	39	6,419	3,015	1.2	16.2
Malta	48	41	1	1	43	24	0.0	-10.4
Portugal	775	931	18	6	955	503	0.2	23.2
Serbia	102	45	3	2	50	15	0.0	-51.0
Slovenia	68	68	14	10	92	31	0.0	35.3
Spain	8,517	10,526	75	25	10,626	5,592	2.0	24.8
<b>East Mediterranean Europe</b>	<b>1,476</b>	<b>1,119</b>	<b>53</b>	<b>31</b>	<b>1,203</b>	<b>521</b>	<b>0.2</b>	<b>-18.5</b>
Israel	821	620	17	6	643	294	0.1	-21.7
Turkey	655	499	36	25	560	227	0.1	-14.5
Other Europe	158	21	15	17	53	19	0.0	-66.5
<b>Americas</b>	<b>21,802</b>	<b>13,683</b>	<b>1,601</b>	<b>3,849</b>	<b>19,133</b>	<b>8,719</b>	<b>3.7</b>	<b>-12.2</b>
<b>North America</b>	<b>19,456</b>	<b>10,698</b>	<b>1,273</b>	<b>3,813</b>	<b>15,784</b>	<b>6,945</b>	<b>3.0</b>	<b>-18.9</b>
Canada	3,364	1,769	284	432	2,485	1,129	0.5	-26.1
Mexico	507	404	17	16	437	202	0.1	-13.8
United States of America	15,585	8,525	972	3,365	12,862	5,614	2.5	-17.5
<b>Central America</b>	<b>136</b>	<b>46</b>	<b>10</b>	<b>7</b>	<b>63</b>	<b>29</b>	<b>0.0</b>	<b>-53.7</b>
Costa Rica	109	35	3	2	40	20	0.0	-63.3
Honduras	15	5	5	1	11	4	0.0	-26.7
Jamaica	12	6	2	4	12	5	0.0	0.0
<b>South America</b>	<b>2,126</b>	<b>2,924</b>	<b>305</b>	<b>21</b>	<b>3,250</b>	<b>1,733</b>	<b>0.6</b>	<b>52.9</b>
Argentina	413	176	19	3	198	90	0.0	-52.1
Brazil	649	317	29	3	349	181	0.1	-46.2
Chile	344	1,710	210	2	1,922	1,073	0.4	458.7
Colombia	381	281	20	6	307	163	0.1	-19.4
Ecuador	86	59	5	3	67	28	0.0	-22.1
Peru	174	241	12	1	254	128	0.0	46.0
Uruguay	54	41	6	2	49	19	0.0	-9.3
Venezuela	25	99	4	1	104	51	0.0	316.0
Other America	84	15	13	8	36	12	0.0	-57.1
<b>Africa</b>	<b>913</b>	<b>834</b>	<b>152</b>	<b>43</b>	<b>1,029</b>	<b>413</b>	<b>0.2</b>	<b>12.7</b>
<b>North Africa</b>	<b>154</b>	<b>182</b>	<b>8</b>	<b>15</b>	<b>205</b>	<b>97</b>	<b>0.0</b>	<b>33.1</b>
Morocco	107	146	5	1	152	72	0.0	42.1
Sudan	18	13	1	9	23	8	0.0	27.8
Tunisia	29	23	2	5	30	17	0.0	3.4
<b>Subsaharan Africa</b>	<b>734</b>	<b>645</b>	<b>138</b>	<b>24</b>	<b>807</b>	<b>310</b>	<b>0.2</b>	<b>9.9</b>
Cameroon	35	14	4	2	20	7	0.0	-42.9
Congo	15	15	2	1	18	5	0.0	20.0
Ghana	24	20	5	3	28	3	0.0	16.7
Kenya	29	55	11	5	71	38	0.0	144.8
Liberia	21	28	3	1	32	2	0.0	52.4
Nigeria	42	17	22	3	42	4	0.0	0.0
South Africa	528	439	86	4	529	224	0.1	0.2
Tanzania	10	12	3	2	17	8	0.0	70.0
Uganda	19	41	1	2	44	18	0.0	131.6
Zimbabwe	11	4	1	1	6	1	0.0	-45.5
Other Africa	25	7	6	4	17	6	0.0	-32.0
<b>Middle East</b>	<b>422</b>	<b>338</b>	<b>67</b>	<b>50</b>	<b>455</b>	<b>86</b>	<b>0.1</b>	<b>7.8</b>
Egypt	77	74	16	7	97	21	0.0	26.0
Iraq	34	29	3	27	59	6	0.0	73.5
Jordan	28	31	12	1	44	8	0.0	57.1
Kuwait	73	23	11	2	36	3	0.0	-50.7
Oman	25	6	1	1	8	1	0.0	-68.0
Palestine	10	6	2	1	9	1	0.0	-10.0
Qatar	10	8	1	1	10	3	0.0	0.0
Saudi Arabia	29	45	5	4	54	15	0.0	86.2
Syria	37	28	2	1	31	4	0.0	-16.2
United Arab Emirates	24	42	3	2	47	7	0.0	95.8
Yemen	61	41	7	1	49	13	0.0	-19.7
Other Middle East	14	5	4	2	11	4	0.0	-21.4