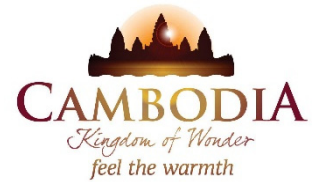




KINGDOM OF CAMBODIA
NATION RELIGION KING



TOURISM STATISTICS REPORT

December 2019

MINISTRY OF TOURISM
NATIONAL INSTITUTE OF TOURISM
TOURISM STATISTICS DEPARTMENT
No. A3, Street 169, Sangkat Veal Vong, Khan 7 Makara, Phnom Penh, Cambodia.
Fax: +855 23 885003
E-mail: kong@tourism.gov.kh
Website: www.tourism.gov.kh

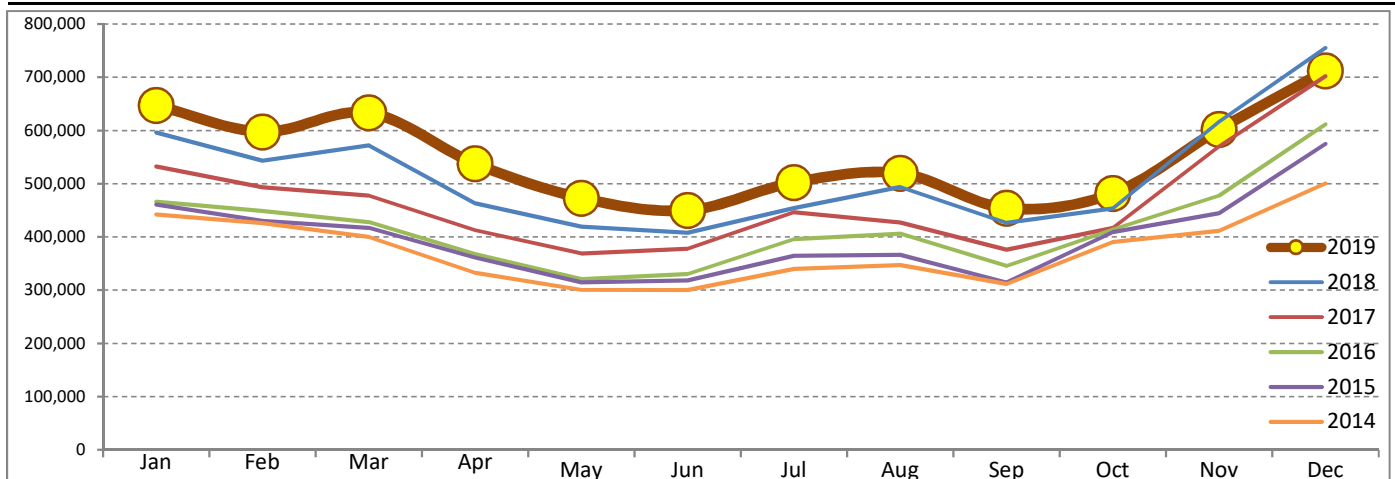
Tourism Highlights

Int'l Tourist Arrivals, Average Length of Stays, Hotel Occupancy & Int'l Tourism Receipts 1993 - 2019

Years	Int'l Tourist Arrivals		Average Length of Stays (Days)	Hotel Occupancy (%)	Int'l Tourism Receipts (Million US\$)
	Number	Change (%)			
1993	118,183	-	N/A	N/A	N/A
1994	176,617	49.4	N/A	N/A	N/A
1995	219,680	24.4	8.0	37.0	100
1996	260,489	18.6	7.5	40.0	118
1997	218,843	-16.0	6.4	30.0	103
1998	286,524	30.9	5.2	40.0	166
1999	367,743	28.3	5.5	44.0	190
2000	466,365	26.8	5.5	45.0	228
2001	604,919	29.7	5.5	48.0	304
2002	786,524	30.0	5.8	50.0	379
2003	701,014	-10.9	5.5	50.0	347
2004	1,055,202	50.5	6.3	52.0	578
2005	1,421,615	34.7	6.3	52.0	832
2006	1,700,041	19.6	6.5	54.8	1,049
2007	2,015,128	18.5	6.5	54.8	1,400
2008	2,125,465	5.5	6.7	62.7	1,595
2009	2,161,577	1.7	6.5	63.6	1,561
2010	2,508,289	16.0	6.5	65.7	1,786
2011	2,881,862	14.9	6.5	66.2	1,912
2012	3,584,307	24.4	6.3	68.5	2,210
2013	4,210,165	17.5	6.8	69.5	2,547
2014	4,502,775	7.0	6.5	67.6	2,736
2015	4,775,231	6.1	6.8	70.2	3,012
2016	5,011,712	5.0	6.3	68.9	3,212
2017	5,602,157	11.8	6.6	71.3	3,638
2018	6,201,077	10.7	7.0	72.2	4,375
2019	6,610,592	6.6	6.2	63.5	4,919

International Tourist Arrivals to Cambodia

Months	2014	2015	2016	2017	2018	2019	Change (%)				
							15/14	16/15	17/16	18/17	2019*18
Q1	1,267,922	1,307,836	1,342,477	1,502,896	1,711,253	1,877,853	3.1	2.6	11.9	13.9	9.7
Jan	442,045	460,577	466,086	532,206	596,241	647,206	4.2	1.2	14.2	12.0	8.5
Feb	425,801	430,207	448,468	493,316	542,937	597,483	1.0	4.2	10.0	10.1	10.0
Mar	400,076	417,052	427,923	477,374	572,075	633,164	4.2	2.6	11.6	19.8	10.7
Q2	933,446	994,154	1,018,455	1,159,783	1,290,407	1,460,621	6.5	2.4	13.9	11.3	13.2
Apr	332,690	361,139	367,684	412,925	463,423	537,656	8.6	1.8	12.3	12.2	16.0
May	300,302	314,748	320,601	368,809	419,171	472,952	4.8	1.9	15.0	13.7	12.8
Jun	300,454	318,267	330,170	378,049	407,813	450,013	5.9	3.7	14.5	7.9	10.3
Q3	998,690	1,044,880	1,147,483	1,250,082	1,374,373	1,475,832	4.6	9.8	8.9	9.9	7.4
Jul	340,091	364,325	395,761	446,627	454,056	502,421	7.1	8.6	12.9	1.7	10.7
Aug	347,211	366,096	406,214	427,224	494,043	519,502	5.4	11.0	5.2	15.6	5.2
Sep	311,388	314,459	345,508	376,231	426,274	453,909	1.0	9.9	8.9	13.3	6.5
Q4	1,302,717	1,428,361	1,503,297	1,689,396	1,825,044	1,796,286	9.6	5.2	12.4	8.0	-1.6
Oct	390,637	408,922	414,077	417,039	453,370	481,782	4.7	1.3	0.7	8.7	6.3
Nov	411,501	444,640	477,686	570,471	616,549	602,042	8.1	7.4	19.4	8.1	-2.4
Dec	500,579	574,799	611,534	701,886	755,125	712,462	14.8	6.4	14.8	7.6	-5.6
Total	4,502,775	4,775,231	5,011,712	5,602,157	6,201,077	6,610,592	6.1	5.0	11.8	10.7	6.6



Source: Tourism Statistics Department, MOT

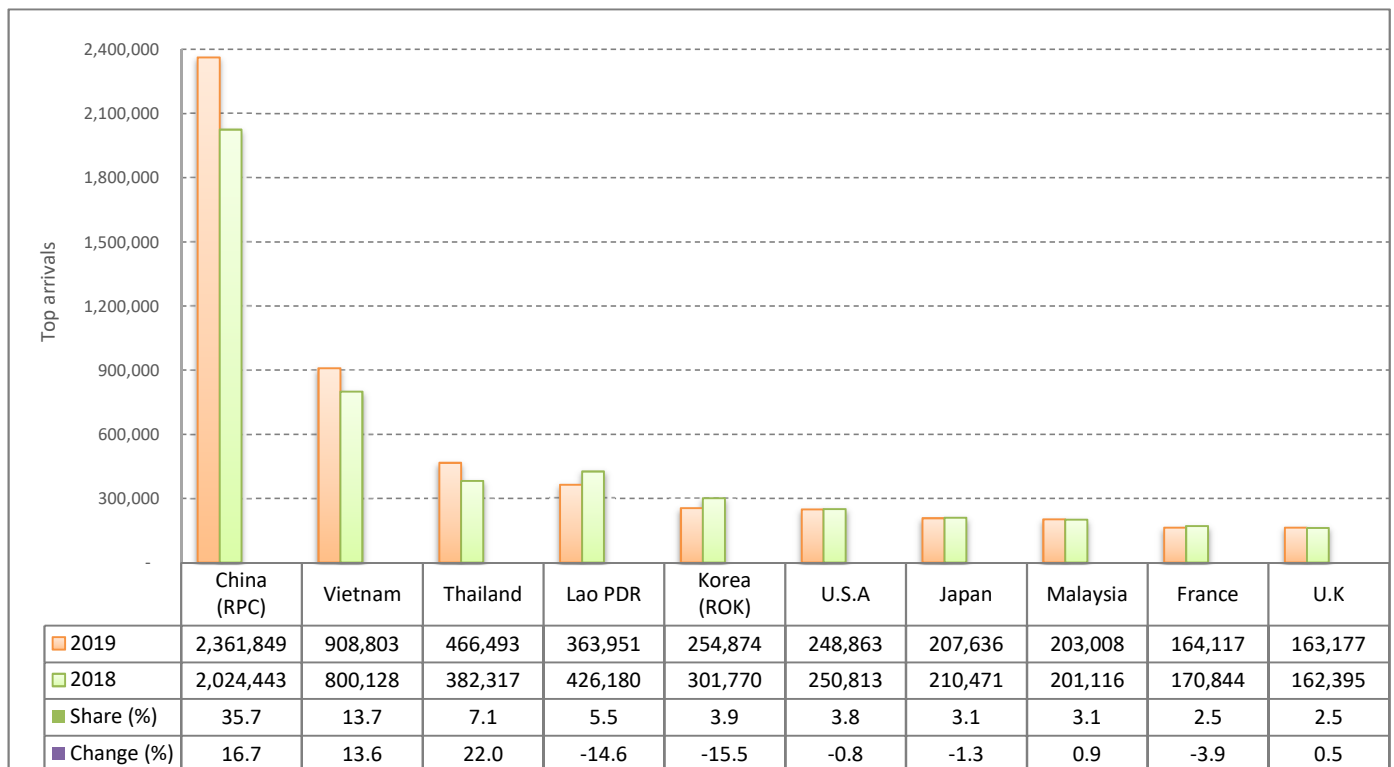
CAMBODIA: TOURISM STATISTICS REPORT IN 2019

I. INBOUND TOURISM

1. International tourist arrivals in January - December 2019

	Inbound tourism			Share (%) 2019*	Change (%)	
	2017	2018	2019		18/17	2019*/18
Air	3,312,738	4,096,870	4,403,995	66.6	23.7	7.5
Phnom Penh Int'l Airport (PNH)	1,409,833	1,923,773	2,071,907	31.3	36.5	7.7
Siem Reap Int'l Airport (REP)	1,820,687	1,939,550	1,665,365	25.2	6.5	-14.1
Kong Keng (KOS)	82,218	233,547	666,723	10.1	184.1	185.5
Land and Waterways	2,289,419	2,104,207	2,206,597	33.4	-8.1	4.9
Land	2,144,009	1,960,011	2,049,748	31.0	-8.6	4.6
Waterways	145,410	144,196	156,849	2.4	-0.8	8.8
Total	5,602,157	6,201,077	6,610,592	100.0	10.7	6.6

2. Top ten markets arrivals in January - December 2019



II. OUTBOUND TOURISM

Outbound tourism in January - December 2019

	Outbound tourism			Change (%)	
	2017	2018	2019	18/17	2019*/18
Cambodian Outbound Tourists	1,752,269	1,995,499	2,038,284	13.9	2.1
International Tourists Departure	5,059,010	5,659,839	6,222,834	11.9	9.9

III. INTERNAL TOURISM

Foreign visitor arrivals to the regions in January - December 2019

	Arrivals			Share (%) 2019*	Change (%)	
	2017	2018	2019		18/17	2019*/18
Phnom Penh & Surrounding	3,144,875	3,610,262	4,404,895	55.8	14.8	22.0
Siem Reap Angkor	2,457,282	2,590,815	2,205,697	27.9	5.4	-14.9
Coastal Areas	739,884	877,236	1,204,374	15.3	18.6	37.3
Eco-tourism Areas	71,697	75,096	81,588	1.0	4.7	8.6
Total	6,413,738	7,153,409	7,896,554	100.0	11.5	10.4

International Tourist Arrivals to Cambodia by Country of Residence in January - December 2019

(by all means of transportation)

Regions Country of Residence	2018	2019			Total	Female	Share	Change
		Purposes of Visit					2019*	2019*/18
		Holiday	Business	Others			(%)	(%)
Grand Total	6,201,077	5,034,903	1,371,363	204,326	6,610,592	2,734,398	100.0	6.6
Asia and the Pacific	4,995,633	4,023,412	1,317,337	102,193	5,442,942	2,194,333	82.3	9.0
ASEAN (Southeast Asia)	2,067,504	2,024,045	163,186	40,954	2,228,185	981,118	33.7	7.8
Brunei Darussalam	790	1,046	27	58	1,131	503	0.0	43.2
Indonesia	55,753	38,530	26,410	1,864	66,804	20,189	1.0	19.8
Lao PDR	426,180	353,782	1,162	9,007	363,951	147,479	5.5	-14.6
Malaysia	201,116	175,693	23,675	3,640	203,008	63,713	3.1	0.9
Myanmar	22,518	16,864	6,279	1,271	24,414	10,366	0.4	8.4
Philippines	92,451	88,564	14,495	1,958	105,017	61,560	1.6	13.6
Singapore	86,251	80,681	5,796	2,087	88,564	28,380	1.3	2.7
Thailand	382,317	414,079	41,214	11,200	466,493	185,470	7.1	22.0
Vietnam	800,128	854,806	44,128	9,869	908,803	463,458	13.7	13.6
Northeast Asia	2,684,908	1,796,139	1,134,307	36,162	2,966,608	1,119,652	44.9	10.5
China	2,024,443	1,299,382	1,046,213	16,254	2,361,849	874,972	35.7	16.7
Hong Kong (China)	12,221	1,898	168	125	2,191	563	0.0	-82.1
Japan	210,471	170,613	31,109	5,914	207,636	82,117	3.1	-1.3
Korea (ROK)	301,770	221,153	24,176	9,545	254,874	106,838	3.9	-15.5
Macau (China)	640	141	45	33	219	51	0.0	-65.8
Mongolia	726	1,304	68	65	1,437	679	0.0	97.9
Taiwan (China)	134,637	101,648	32,528	4,226	138,402	54,432	2.1	2.8
Southern Asia	81,620	85,272	11,298	1,483	98,053	25,808	1.5	20.1
Afghanistan	276	302	41	36	379	112	0.0	37.3
Bangladesh	3,206	5,394	1,440	247	7,081	866	0.1	120.9
Bhutan	174	184	25	56	265	97	0.0	52.3
India	65,882	67,480	7,249	557	75,286	21,557	1.1	14.3
Iran	1,515	1,231	92	50	1,373	458	0.0	-9.4
Nepal	3,102	3,161	606	244	4,011	1,098	0.1	29.3
Pakistan	3,567	4,014	699	122	4,835	613	0.1	35.5
Sri Lanka	3,898	3,506	1,146	171	4,823	1,007	0.1	23.7
Oceania	152,212	116,353	7,931	22,816	147,100	66,639	2.2	-3.4
Australia	127,430	98,890	6,752	17,611	123,253	55,981	1.9	-3.3
Fiji	262	409	75	59	543	209	0.0	107.3
New Zealand	24,520	17,054	1,104	5,146	23,304	10,449	0.4	-5.0
Other Asia & the Pacific	9,389	1,603	615	778	2,996	1,116	0.0	-68.1
Europe	818,661	720,440	34,502	38,995	793,937	363,839	12.0	-3.0
Northern Europe	219,964	202,542	10,624	3,179	216,345	92,963	3.3	-1.6
Denmark	12,688	11,131	481	231	11,843	5,422	0.2	-6.7
Finland	7,375	5,499	379	167	6,045	2,643	0.1	-18.0
Iceland	761	776	59	50	885	380	0.0	16.3
Ireland	12,142	11,254	600	155	12,009	5,408	0.2	-1.1
Norway	9,463	7,795	263	248	8,306	3,748	0.1	-12.2
Sweden	15,140	12,791	759	530	14,080	5,837	0.2	-7.0
United Kingdom	162,395	153,296	8,083	1,798	163,177	69,525	2.5	0.5
Western Europe	349,469	289,046	15,789	32,625	337,460	150,096	5.1	-3.4
Austria	11,374	9,880	356	471	10,707	4,910	0.2	-5.9
Belgium	18,499	17,466	900	904	19,270	8,834	0.3	4.2
France	170,844	128,073	9,210	26,834	164,117	73,589	2.5	-3.9
Germany	98,976	89,488	2,799	2,084	94,371	41,148	1.4	-4.7
Luxembourg	690	817	69	45	931	399	0.0	34.9
Monaco	93	51	15	18	84	25	0.0	-9.7
Netherlands	28,911	26,063	1,459	762	28,284	12,578	0.4	-2.2
Switzerland	20,082	17,208	981	1,507	19,696	8,613	0.3	-1.9
Central / Eastern Europe	125,989	108,402	4,092	1,582	114,076	60,400	1.7	-9.5
Bulgaria	2,817	2,752	112	77	2,941	1,346	0.0	4.4
Czech Republic	7,000	6,821	158	94	7,073	3,176	0.1	1.0
Estonia	3,240	1,353	59	38	1,450	669	0.0	-55.2
Hungary	5,460	5,900	157	116	6,173	3,100	0.1	13.1
Kazakhstan	1,989	1,694	398	58	2,150	1,132	0.0	8.1
Kyrgyzstan	293	273	75	37	385	197	0.0	31.4
Latvia	1,495	1,248	78	29	1,355	711	0.0	-9.4
Lithuania	2,250	2,186	69	30	2,285	1,247	0.0	1.6
Poland	20,758	19,182	321	115	19,618	9,960	0.3	-5.5
Romania	3,866	3,423	159	119	3,701	1,954	0.1	-4.3
Russian Federation	64,726	53,307	1,688	658	55,653	30,754	0.8	-14.0
Slovakia	4,120	2,929	111	75	3,115	1,491	0.0	-24.4
Ukraine	7,424	6,815	581	80	7,476	4,337	0.1	0.7
Uzbekistan	551	519	126	56	701	326	0.0	27.2

International Tourist Arrivals to Cambodia by Country of Residence in January - December 2019

(by all means of transportation)

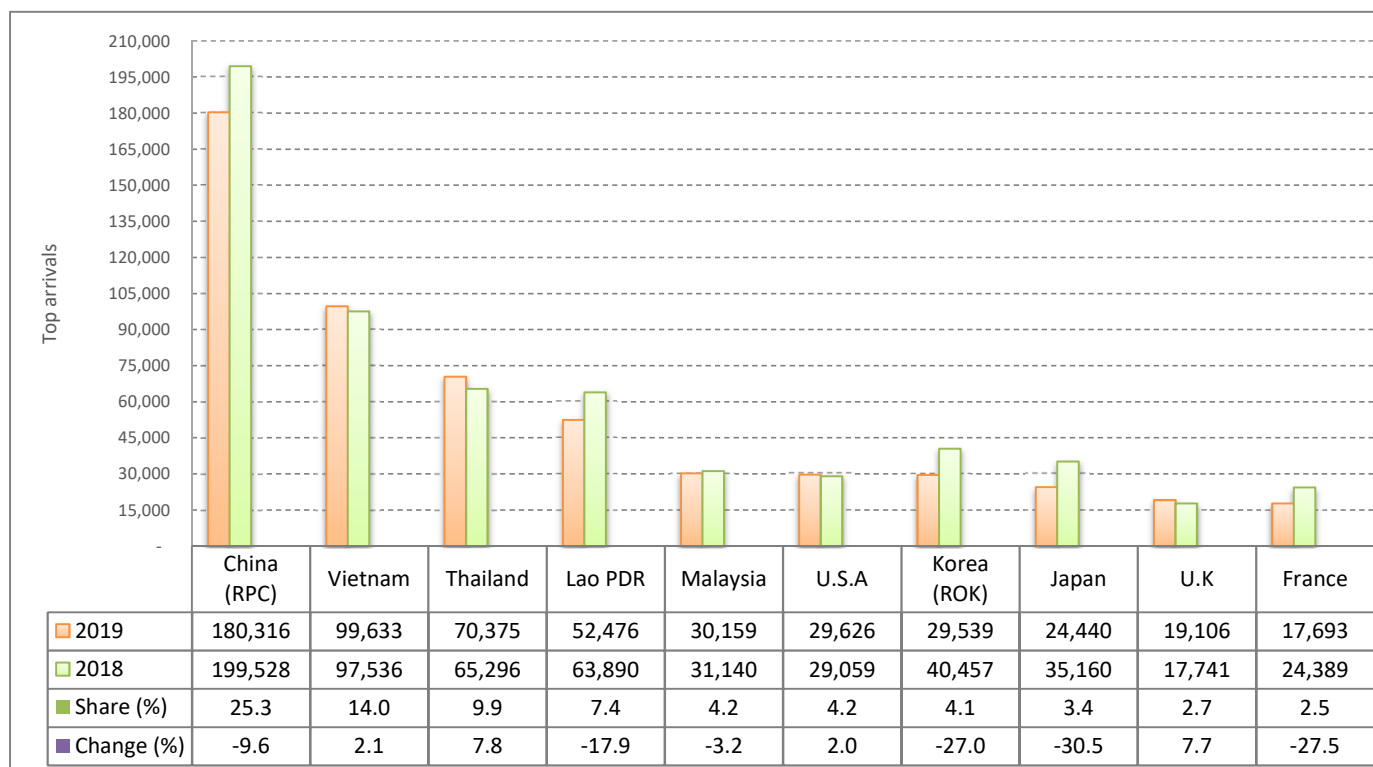
Regions Country of Residence	2018		2019				Share	Change
	Purposes of Visit			Total	Female	2019*	2019*/18	
	Holiday	Business	Others			(%)	(%)	
Grand Total	6,201,077	5,034,903	1,371,363	204,326	6,610,592	2,734,398	100.0	6.6
Southern Europe	95,518	97,851	2,996	983	101,830	49,737	1.5	6.6
Croatia	2,363	1,402	73	52	1,527	736	0.0	-35.4
Greece	1,924	2,060	81	66	2,207	998	0.0	14.7
Italy	33,979	39,034	1,472	410	40,916	19,147	0.6	20.4
Malta	439	464	20	23	507	206	0.0	15.5
Portugal	7,164	8,005	228	66	8,299	4,289	0.1	15.8
Serbia	1,249	1,085	66	51	1,202	617	0.0	-3.8
Slovenia	1,565	1,570	133	53	1,756	717	0.0	12.2
Spain	46,835	44,231	923	262	45,416	23,027	0.7	-3.0
East Mediterranean Europe	22,154	21,896	791	423	23,110	10,195	0.3	4.3
Israel	14,727	15,946	373	125	16,444	7,392	0.2	11.7
Turkey	7,427	5,950	418	298	6,666	2,803	0.1	-10.2
Other Europe	5,567	703	210	203	1,116	448	0.0	-80.0
Americas	369,319	274,404	17,295	62,264	353,963	168,694	5.4	-4.2
North America	321,069	241,868	16,126	61,560	319,554	150,409	4.8	-0.5
Canada	61,551	48,872	3,542	7,775	60,189	27,889	0.9	-2.2
Mexico	8,705	10,143	212	147	10,502	5,518	0.2	20.6
United States of America	250,813	182,853	12,372	53,638	248,863	117,002	3.8	-0.8
Central America	1,945	1,075	90	68	1,233	595	0.0	-36.6
Costa Rica	1,490	764	29	28	821	395	0.0	-44.9
Honduras	187	134	39	16	189	96	0.0	1.1
Jamaica	268	177	22	24	223	104	0.0	-16.8
South America	43,799	31,043	959	525	32,527	17,435	0.5	-25.7
Argentina	10,972	5,736	98	65	5,899	3,042	0.1	-46.2
Brazil	12,937	10,102	245	107	10,454	5,509	0.2	-19.2
Chile	7,838	6,211	323	77	6,611	3,535	0.1	-15.7
Colombia	7,605	4,127	123	102	4,352	2,385	0.1	-42.8
Ecuador	805	601	41	47	689	346	0.0	-14.4
Peru	1,939	1,720	42	61	1,823	1,113	0.0	-6.0
Uruguay	1,347	2,094	41	35	2,170	1,239	0.0	61.1
Venezuela	356	452	46	31	529	266	0.0	48.6
Other America	2,506	418	120	111	649	255	0.0	-74.1
Africa	12,435	11,440	1,711	495	13,646	6,134	0.2	9.7
North Africa	1,394	1,880	109	91	2,080	939	0.0	49.2
Morocco	868	914	51	28	993	436	0.0	14.4
Sudan	224	179	24	40	243	71	0.0	8.5
Tunisia	302	787	34	23	844	432	0.0	179.5
Subsaharan Africa	10,529	9,404	1,548	355	11,307	5,103	0.2	7.4
Cameroon	258	283	52	37	372	102	0.0	44.2
Congo	305	367	32	35	434	181	0.0	42.3
Ghana	502	301	54	30	385	84	0.0	-23.3
Kenya	485	454	55	52	561	303	0.0	15.7
Liberia	1,399	384	22	19	425	74	0.0	-69.6
Nigeria	535	228	309	58	595	92	0.0	11.2
South Africa	6,599	6,706	949	56	7,711	3,880	0.1	16.9
Tanzania	107	177	19	17	213	61	0.0	99.1
Uganda	166	346	30	36	412	206	0.0	148.2
Zimbabwe	173	158	26	15	199	120	0.0	15.0
Other Africa	512	156	54	49	259	92	0.0	-49.4
Middle East	5,029	5,207	518	379	6,104	1,398	0.1	21.4
Egypt	846	1,295	103	39	1,437	424	0.0	69.9
Iraq	577	391	63	96	550	96	0.0	-4.7
Jordan	495	566	85	26	677	133	0.0	36.8
Kuwait	472	370	51	45	466	84	0.0	-1.3
Oman	259	229	20	16	265	53	0.0	2.3
Palestine	193	82	18	14	114	18	0.0	-40.9
Qatar	117	71	20	20	111	18	0.0	-5.1
Saudi Arabia	321	437	26	30	493	90	0.0	53.6
Syria	480	447	32	20	499	87	0.0	4.0
United Arab Emirates	248	689	42	23	754	243	0.0	204.0
Yemen	653	528	27	21	576	98	0.0	-11.8
Other Middle East	368	102	31	29	162	54	0.0	-56.0

I. INBOUND TOURISM

1. International tourist arrivals in December 2019

	Inbound tourism			Share (%) 2019*	Change (%)	
	2017	2018	2019		18/17	2019*/18
Air	335,245	413,087	352,774	49.5	23.2	-14.6
Phnom Penh Int'l Airport (PNH)	129,586	185,006	175,134	24.6	42.8	-5.3
Siem Reap Int'l Airport (REP)	196,550	193,567	148,139	20.8	-1.5	-23.5
Kong Keng (KOS)	9,109	34,514	29,501	4.1	278.9	-14.5
Land and Waterways	366,641	342,038	359,688	50.5	-6.7	5.2
Land	350,104	326,074	332,687	46.7	-6.9	2.0
Waterways	16,537	15,964	27,001	3.8	-3.5	69.1
Total	701,886	755,125	712,462	100.0	7.6	-5.6

2. Top ten markets arrivals in December 2019



II. OUTBOUND TOURISM

Outbound tourism in December 2019

	Outbound tourism			Change (%)	
	2017	2018	2019	18/17	2019*/18
Cambodian Outbound Tourists	139,744	181,163	165,784	29.6	-8.5
International Tourists Departure	468,780	518,294	588,913	10.6	13.6

III. INTERNAL TOURISM

Foreign visitor arrivals to the regions in December 2019

	Arrivals			Share (%) 2019*	Change (%)	
	2017	2018	2019		18/17	2019*/18
Phnom Penh & Surrounding	434,667	487,478	504,032	62.0	12.1	3.4
Siem Reap Angkor	267,219	267,647	208,430	25.6	0.2	-22.1
Coastal Areas	72,945	80,969	93,343	11.5	11.0	15.3
Eco-tourism Areas	6,324	6,760	7,574	0.9	6.9	12.0
Total	781,155	842,854	813,379	100.0	7.9	-3.5

International Tourist Arrivals to Cambodia by Country of Residence in December 2019

(by all means of transportation)

Regions Country of Residence	2018	2019			Total	Female	Share	Change
		Purposes of Visit					2019*	2019*/18
		Holiday	Business	Others			(%)	(%)
Grand Total	755,125	612,519	71,761	28,182	712,462	294,976	100.0	-5.6
Asia and the Pacific	621,392	491,841	67,286	17,885	577,012	233,567	81.0	-7.1
ASEAN (Southeast Asia)	303,414	280,182	11,147	6,195	297,524	119,797	41.8	-1.9
Brunei Darussalam	113	97	3	12	112	30	0.0	-0.9
Indonesia	8,497	6,704	1,887	368	8,959	3,115	1.3	5.4
Lao PDR	63,890	51,120	71	1,285	52,476	17,904	7.4	-17.9
Malaysia	31,140	27,280	2,004	875	30,159	9,263	4.2	-3.2
Myanmar	3,844	3,222	310	238	3,770	1,786	0.5	-1.9
Philippines	16,427	14,609	858	348	15,815	7,297	2.2	-3.7
Singapore	16,671	15,282	468	475	16,225	4,752	2.3	-2.7
Thailand	65,296	66,041	2,770	1,564	70,375	30,063	9.9	7.8
Vietnam	97,536	95,827	2,776	1,030	99,633	45,587	14.0	2.1
Northeast Asia	289,887	185,274	54,537	7,286	247,097	100,344	34.7	-14.8
China	199,528	129,161	47,195	3,960	180,316	72,321	25.3	-9.6
Hong Kong (China)	1,920	338	11	23	372	178	0.1	-80.6
Japan	35,160	20,641	2,653	1,146	24,440	10,369	3.4	-30.5
Korea (ROK)	40,457	25,541	2,069	1,929	29,539	12,832	4.1	-27.0
Macau (China)	132	12	4	2	18	7	0.0	-86.4
Mongolia	53	279	3	7	289	165	0.0	445.3
Taiwan (China)	12,637	9,302	2,602	219	12,123	4,472	1.7	-4.1
Southern Asia	12,080	11,505	955	129	12,589	3,775	1.8	4.2
Afghanistan	36	40	1	3	44	13	0.0	22.2
Bangladesh	414	595	180	20	795	116	0.1	92.0
Bhutan	10	20	2	8	30	15	0.0	200.0
India	10,521	9,588	553	68	10,209	3,257	1.4	-3.0
Iran	104	207	9	5	221	80	0.0	112.5
Nepal	286	270	76	17	363	88	0.1	26.9
Pakistan	387	389	64	2	455	53	0.1	17.6
Sri Lanka	322	396	70	6	472	153	0.1	46.6
Oceania	15,619	14,778	603	4,219	19,600	9,568	2.8	25.5
Australia	12,800	12,894	510	2,934	16,338	7,979	2.3	27.6
Fiji	28	35	6	3	44	23	0.0	57.1
New Zealand	2,791	1,849	87	1,282	3,218	1,566	0.5	15.3
Other Asia & the Pacific	392	102	44	56	202	83	0.0	-48.5
Europe	92,691	85,484	2,903	3,590	91,977	40,544	12.9	-0.8
Northern Europe	22,857	24,204	887	314	25,405	9,370	3.6	11.1
Denmark	955	1,109	44	28	1,181	506	0.2	23.7
Finland	752	884	71	30	985	438	0.1	31.0
Iceland	72	66	2	5	73	30	0.0	1.4
Ireland	938	873	55	18	946	394	0.1	0.9
Norway	861	824	17	29	870	343	0.1	1.0
Sweden	1,538	2,126	71	47	2,244	986	0.3	45.9
United Kingdom	17,741	18,322	627	157	19,106	6,673	2.7	7.7
Western Europe	45,272	33,061	1,330	2,988	37,379	16,066	5.2	-17.4
Austria	1,419	1,068	20	40	1,128	530	0.2	-20.5
Belgium	2,076	1,910	79	59	2,048	944	0.3	-1.3
France	24,389	14,529	770	2,394	17,693	7,775	2.5	-27.5
Germany	12,001	10,552	245	186	10,983	4,346	1.5	-8.5
Luxembourg	41	70	9	5	84	37	0.0	104.9
Monaco	12	3	1	1	5	1	0.0	-58.3
Netherlands	3,181	2,519	121	54	2,694	1,203	0.4	-15.3
Switzerland	2,153	2,410	85	249	2,744	1,230	0.4	27.5
Central / Eastern Europe	13,255	13,941	359	96	14,396	7,782	2.0	8.6
Bulgaria	262	328	12	4	344	182	0.0	31.3
Czech Republic	752	857	15	5	877	403	0.1	16.6
Estonia	267	255	8	3	266	127	0.0	-0.4
Hungary	578	799	9	7	815	426	0.1	41.0
Kazakhstan	200	263	28	2	293	184	0.0	46.5
Kyrgyzstan	27	33	5	2	40	34	0.0	48.1
Latvia	166	150	10	3	163	77	0.0	-1.8
Lithuania	273	276	4	2	282	156	0.0	3.3
Poland	2,654	2,233	24	9	2,266	1,152	0.3	-14.6
Romania	450	555	15	12	582	332	0.1	29.3
Russian Federation	6,041	6,927	153	32	7,112	3,949	1.0	17.7
Slovakia	719	362	9	9	380	185	0.1	-47.1
Ukraine	829	768	61	4	833	508	0.1	0.5
Uzbekistan	37	135	6	2	143	67	0.0	286.5

International Tourist Arrivals to Cambodia by Country of Residence in December 2019

(by all means of transportation)

Regions Country of Residence	2018	2019			Total	Female	Share	Change
		Purposes of Visit					2019*	2019*/18
		Holiday	Business	Others			(%)	(%)
Grand Total	755,125	612,519	71,761	28,182	712,462	294,976	100.0	-5.6
Southern Europe	8,673	11,385	240	96	11,721	5,983	1.6	35.1
Croatia	289	266	8	2	276	161	0.0	-4.5
Greece	187	390	4	5	399	187	0.1	113.4
Italy	2,902	6,045	109	51	6,205	3,174	0.9	113.8
Malta	34	34	2	2	38	6	0.0	11.8
Portugal	865	845	16	6	867	488	0.1	0.2
Serbia	124	122	9	3	134	84	0.0	8.1
Slovenia	187	257	20	2	279	127	0.0	49.2
Spain	4,085	3,426	72	25	3,523	1,756	0.5	-13.8
East Mediterranean Europe	2,413	2,808	71	75	2,954	1,290	0.4	22.4
Israel	1,907	2,022	28	16	2,066	873	0.3	8.3
Turkey	506	786	43	59	888	417	0.1	75.5
Other Europe	221	85	16	21	122	53	0.0	-44.8
Americas	39,632	32,462	1,395	6,638	40,495	19,475	5.7	2.2
North America	36,522	29,548	1,337	6,566	37,451	17,839	5.3	2.5
Canada	6,736	5,141	293	950	6,384	2,910	0.9	-5.2
Mexico	727	1,416	20	5	1,441	785	0.2	98.2
United States of America	29,059	22,991	1,024	5,611	29,626	14,144	4.2	2.0
Central America	154	72	4	6	82	38	0.0	-46.8
Costa Rica	126	49	2	2	53	25	0.0	-57.9
Honduras	20	9	1	1	11	4	0.0	-45.0
Jamaica	8	14	1	3	18	9	0.0	125.0
South America	2,772	2,758	46	53	2,857	1,552	0.4	3.1
Argentina	542	477	6	2	485	249	0.1	-10.5
Brazil	1,137	1,414	23	17	1,454	756	0.2	27.9
Chile	350	240	1	17	258	129	0.0	-26.3
Colombia	399	394	4	4	402	229	0.1	0.8
Ecuador	75	41	5	2	48	31	0.0	-36.0
Peru	171	108	3	7	118	116	0.0	-31.0
Uruguay	78	51	3	2	56	25	0.0	-28.2
Venezuela	20	33	1	2	36	17	0.0	80.0
Other America	184	84	8	13	105	46	0.0	-42.9
Africa	961	1,882	142	46	2,070	1,055	0.3	115.4
North Africa	123	174	10	11	195	93	0.0	58.5
Morocco	72	91	3	5	99	52	0.0	37.5
Sudan	23	28	2	4	34	9	0.0	47.8
Tunisia	28	55	5	2	62	32	0.0	121.4
Subsaharan Africa	779	1,684	129	32	1,845	953	0.3	136.8
Cameroon	19	26	3	4	33	2	0.0	73.7
Congo	23	30	4	10	44	14	0.0	91.3
Ghana	24	54	5	2	61	26	0.0	154.2
Kenya	29	78	4	1	83	45	0.0	186.2
Liberia	26	37	3	2	42	9	0.0	61.5
Nigeria	37	34	17	4	55	8	0.0	48.6
South Africa	566	1,360	89	4	1,453	806	0.2	156.7
Tanzania	10	18	1	1	20	9	0.0	100.0
Uganda	20	28	2	2	32	20	0.0	60.0
Zimbabwe	25	19	1	2	22	14	0.0	-12.0
Other Africa	59	24	3	3	30	9	0.0	-49.2
Middle East	449	850	35	23	908	335	0.1	102.2
Egypt	88	404	8	2	414	189	0.1	370.5
Iraq	26	67	6	3	76	23	0.0	192.3
Jordan	42	80	4	2	86	35	0.0	104.8
Kuwait	43	53	3	4	60	9	0.0	39.5
Oman	22	9	1	2	12	1	0.0	-45.5
Palestine	60	8	1	1	10	3	0.0	-83.3
Qatar	10	9	2	2	13	4	0.0	30.0
Saudi Arabia	35	93	2	1	96	35	0.0	174.3
Syria	31	39	3	2	44	6	0.0	41.9
United Arab Emirates	26	35	2	1	38	12	0.0	46.2
Yemen	42	40	2	1	43	13	0.0	2.4
Other Middle East	24	13	1	2	16	5	0.0	-33.3